

# Colorectal cancer

Jürgen Weitz, Moritz Koch, Jürgen Debus, Thomas Höhler, Peter R Galle, Markus W Büchler

Every year, more than 945 000 people develop colorectal cancer worldwide, and around 492 000 patients die. This form of cancer develops sporadically, in the setting of hereditary cancer syndromes, or on the basis of inflammatory bowel diseases. Screening and prevention programmes are available for all these causes and should be more widely publicised. The adenoma-carcinoma sequence is the basis for development of colorectal cancer, and the underlying molecular changes have largely been identified. Prognosis depends on factors related to the patient, treatment, and tumour, and the expertise of the treatment team is one of the major determinants of outcome. New information on the molecular basis of this cancer have led to the development of targeted therapeutic options, which are being tested in clinical trials. Further clinical progress will largely depend on the broader implementation of multidisciplinary treatment strategies following the principles of evidence-based medicine.

Colorectal cancer is one of the most common cancers worldwide. In this review, we aim to summarise recent advances about this tumour.

## Epidemiology

Colorectal cancer is the third most common cancer and the fourth most frequent cause of cancer deaths worldwide. The WHO estimates that 945 000 new cases occur yearly, with 492 000 deaths.<sup>1</sup> This cancer is more common in developed than developing countries. In developed countries, it is the second most common tumour, with a lifetime incidence of 5%, but its incidence and mortality are now decreasing.<sup>1-3</sup> The worldwide variability of outcome is proportional to access to specialists and availability of modern drug therapy; the overall 5-year survival rate in the USA exceeds 60%, but is less than 40% in less developed countries.<sup>1</sup>

## Risk factors and causes

### Sporadic

Most cases of colorectal cancer are sporadic, and genetic and environmental factors are important (panel 1).<sup>1</sup> About 20% of all patients with this cancer are estimated to have some component of familial risk without fulfilling the strict criteria for hereditary colorectal cancer.<sup>4</sup> Family history should therefore always be taken when assessing a patient; the Bethesda guidelines are valuable in this context. However, taking a family history by interview often underestimates family history of colorectal cancer.<sup>5</sup>

### Hereditary

Roughly 5–10% of all colorectal cancers develop in the setting of defined hereditary cancer syndromes. The two main forms are hereditary nonpolyposis colorectal cancer (HNPCC) and familial adenomatous polyposis (FAP).<sup>4</sup> Various hamartomatous polyposis syndromes are also associated with an increased risk of such cancer, such as Peutz-Jeghers syndrome, juvenile polyposis syndrome, and Cowden syndrome.<sup>4,6</sup>

FAP is an autosomal-dominant disease. In about 80% of affected individuals, a germline mutation can be identified in the adenomatous polyposis coli (APC)

gene.<sup>4,6</sup> A subset of people with FAP and attenuated FAP has biallelic mutations of the *MYH* gene.<sup>7,8</sup> FAP patients can develop more than 100 colorectal adenomas (50% of patients by age 15 years, 95% by age 35 years); if left untreated, colorectal cancer arises in almost all patients by age 40 years. Extracolonic manifestations, such as periampullary duodenal carcinoma (4–6% of patients) and desmoids (10–20% of patients), are a major cause of mortality and morbidity.<sup>6,9,10</sup> An important variant is attenuated FAP with ten to 100 colorectal adenomas. A clear genotype-phenotype exists: APC mutations between codons 1445 and 1578 are associated with increased risk of desmoid tumours—patients with attenuated FAP typically have mutations at the 5' (proximal to codon 1517) or the 3' end (distal to codon 1900) of the APC gene.<sup>11</sup> FAP patients without identifiable mutation are at higher risk for a severe phenotype.<sup>12</sup>

HNPCC is an autosomal-dominant disorder caused by germline mutations of mismatch repair genes. Tumours that arise in the setting of HNPCC typically have a molecular characteristic called microsatellite instability, which helps in making the diagnosis. This instability is defined as frequent mutations in microsatellites, which are short repeated DNA sequences.<sup>11</sup> The penetrance of colorectal cancer in HNPCC is 70–85%. Risk is also increased for tumours of the genitourinary system, stomach, biliary system, pancreas, small intestine, and CNS.<sup>4,6,13</sup> A genotype-phenotype correlation was

*Lancet* 2005; 365: 153–65

Departments of Surgery (J Weitz MD, M Koch MD, M W Büchler MD) and Radiation Oncology (J Debus MD), University of Heidelberg, Heidelberg, Germany; and Department of Internal Medicine, Johannes-Gutenberg University, Mainz, Germany (T Höhler MD, P R Galle MD)

Correspondence to: Dr M W Büchler, Department of Surgery, University of Heidelberg, Im Neuenheimer Feld 110, D-69120 Heidelberg, Germany markus\_buechler@med.uni-heidelberg.de

### Search strategy and selection criteria

We searched the databases MEDLINE and PREMEDLINE from January, 1999, to July, 2004. The keywords "colorectal cancer", "rectal cancer", and "colon cancer" were combined with the Boolean operator "and" with the following keywords: "epidemiology", "risk factors", "prevention", "screening", "pathogenesis", "prognostic factors", "diagnosis", "treatment" ("surgery", "radiotherapy", "chemotherapy"), and "follow-up". We screened the bibliography of each relevant article for further relevant studies. More recent publications and randomised controlled trials were prioritised.

**Panel 1: Risk factors and causes****Sporadic colorectal cancer (88–94%)**

Older age  
Male sex  
Cholecystectomy  
Ureterocolic anastomosis  
Hormonal factors: nulliparity, late age at first pregnancy, early menopause

**Environmental factors**

Diet rich in meat and fat, and poor in fibre, folate, and calcium  
Sedentary lifestyle  
Obesity  
Diabetes mellitus  
Smoking  
Previous irradiation  
Occupational hazards (eg, asbestos exposure)  
High alcohol intake

**Personal history of sporadic tumours**

History of colorectal polyps  
History of colorectal cancer (risk is 1.5–3% for second such cancer in first 5 years)  
History of small bowel, endometrial, breast, or ovarian cancer

**Familial colorectal cancer (20%)**

First or second degree relatives with this cancer, criteria for hereditary colorectal cancer not fulfilled:

- One affected first-degree relative increases risk 2.3-fold
- Two or more affected first-degree relatives increase risk 4.25-fold
- Index case <45 years increases risk 3.9-fold
- Familial history of colorectal adenoma increases risk 2-fold

**Colorectal cancer in inflammatory bowel disease (1–2%)**

Ulcerative colitis  
Crohn's colitis

**Hereditary colorectal cancer (5–10%)**

Polyposis-syndromes: familial adenomatous polyposis (FAP), Gardner's syndrome, Turcot's syndrome, attenuated adenomatous polyposis coli, flat adenoma syndrome  
Hereditary non-polyposis colorectal cancer (HNPCC)  
Hamartomatous polyposis syndromes (Peutz-Jeghers syndrome, juvenile polyposis syndrome, Cowden syndrome)

suggested for patients with HNPCC.<sup>14</sup> On average, affected patients develop colorectal cancer by age 44 years, tumours tend to be right-sided, and have classical histological features (panel 2).

Diagnosis is difficult because no typical phenotypic features occur. Therefore, clinical criteria defining HNPCC were developed (Amsterdam I and II criteria, panel 2).<sup>11,13</sup> The Bethesda guidelines are less stringent, and only define individuals who should undergo further testing (panel 2).<sup>15</sup>

**Colorectal cancer in inflammatory bowel disease**

Colorectal cancer accounts for about a third of deaths related to ulcerative colitis, and risk depends on disease duration (2% of affected people by 10 years, 8% by

20 years, and 18% by 30 years), extent of inflammation, presence of primary sclerosing cholangitis, and backwash ileitis.<sup>16,17</sup> Crohn's colitis is also associated with increased risk of colorectal cancer; the relative risk is similar to that for ulcerative colitis.<sup>16</sup>

**Screening and prevention**

Screening is effective in reducing mortality from colorectal cancer. Screening procedures include faecal occult-blood tests, flexible sigmoidoscopy, double-contrast barium enema, and colonoscopy.<sup>18</sup> One of these options should be offered to asymptomatic people aged 50 years or older.<sup>19</sup> The ideal screening method is still controversial, with no test unequivocally better than another. Risk, costs, and effectiveness need to be taken into account when discussing the different options.<sup>19</sup> Total colonoscopy certainly has the advantage of allowing assessment of the entire colon with the possibility of simultaneous biopsy or polypectomy. These advantages have to be balanced against the higher costs, risks, and inconvenience to the patient. Sigmoidoscopy and faecal occult-blood tests might be less effective in terms of cancer prevention, but are less invasive. For patients with a personal or familial history of colorectal neoplasms, FAP, HNPCC or inflammatory bowel diseases, special surveillance guidelines exist taking into consideration the higher risk.<sup>19</sup> Educational efforts are important, since the rate of screening in many developed countries is less than 50%.<sup>20</sup>

New techniques such as magnification endoscopy and chromoendoscopy increase the sensitivity of colonoscopy.<sup>21,22</sup> They result in a better demarcation of the lesions, which facilitates more exact endoscopic resection of adenomas and selected cases of early cancer (figure 1).<sup>23</sup> Confocal laser endomicroscopy allows *in vivo* histology during colonoscopy with a diagnostic yield similar to conventional histology after biopsy.<sup>24</sup> This and other new screening modalities such as virtual colonoscopy, molecular stool tests, and serum proteomics are promising, but are not yet ready for routine clinical use.<sup>18,19,25</sup>

Development of a blood test to assess the personal risk for colorectal cancer would be of enormous benefit. Detection of loss of imprinting of the insulin growth factor II gene (*IGF2*) is a promising candidate in this context. This loss is four times more common in patients with colorectal adenomas and eighteen times more common in those with colorectal cancer than in healthy individuals.<sup>26</sup> A second biomarker for this cancer could be insulin-like growth factor 1 (*IGF1*).<sup>27</sup> Further studies will have to prospectively assess the validity of these factors in individualised screening strategies.

The most important and cheapest form of prevention of colorectal cancer is a change in lifestyle. Observational studies indicate that tobacco avoidance, physical activity, and weight control can reduce risk.<sup>28</sup>

Even though clinical trials with dietary interventions (eg, increases in fibre, fruits, and vegetables, and reductions in fat and alcohol) have shown little effect, several observational studies support a role of dietary modifications.<sup>29</sup> Many drugs are being investigated for chemoprevention of this cancer.<sup>29</sup> Although a significant risk reduction for colorectal cancer or adenomas has already been recorded for several drugs (eg, aspirin, nonsteroidal anti-inflammatory drugs), the role of chemoprevention needs to be further defined.<sup>30</sup>

Surgical prevention is established for FAP and ulcerative colitis, and restorative proctocolectomy with ileoanal J-pouch is the recommended procedure for most patients.<sup>6,16</sup> For HNPCC, the role of prophylactic surgery is less well defined, but some suggest prophylactic colectomy.<sup>6</sup> Because prophylactic surgery is mostly on young, apparently healthy people, morbidity and mortality from surgery has to be kept to a minimum.<sup>31</sup>

## Pathogenesis

The adenoma-carcinoma sequence is the basis for development of colorectal cancer with corresponding accumulation of genetic changes.<sup>32,33</sup> Traditionally, colorectal carcinogenesis is explained by two pathways, the gatekeeper and the caretaker pathway.<sup>34</sup> The gatekeeper pathway is responsible for about 85% of sporadic colorectal cancers, and is the mechanism of carcinogenesis in patients with FAP. Gatekeepers are genes that regulate growth. One of the key steps of this pathway is mutation of the tumour-suppressor gene *APC*. Many other tumour-suppressor genes (eg, *DCC*, *DPC4/Smad4*, *p53*, *nm32*) and oncogenes (eg, *K-ras*, *c-myc*, *c-neu*, *c-erb-2*, *c-src*) are also involved.<sup>35</sup>

The caretaker pathway is characterised by mutations or epigenetic changes of genes that maintain genetic stability (eg, mismatch repair genes).<sup>4</sup> HNPCC is the hereditary form of this pathway; about 15% of sporadic colorectal cancers are also thought to be caused by this mechanism.<sup>36</sup> Besides oncogenes and tumour-suppressor genes in the gatekeeper pathway, further tumour-suppressor genes such as *TGFβRII*, *IGF2R*, and *BAX* are mutated in this pathway.<sup>4,32,37</sup>

In fact, the two pathways might not be completely separated since the *APC* gene can act as a caretaker and mismatch repair genes can affect cell proliferation.<sup>37</sup> Additional pathways could exist—eg, the serrated pathway as well as distinct pathways for carcinogenesis of flat and depressed colorectal neoplasms and for carcinogenesis in inflammatory bowel disease.<sup>17,37–39</sup> Epigenetic mechanisms such as change in DNA methylation, loss of imprinting, and histone acetylation, as well as modifier genes, such as the cyclooxygenase-2 gene and the peroxisome proliferator-activating receptor gene also seem to be involved in the genesis of colorectal cancer.<sup>32,33,40–42</sup> Other genes, such as those for tyrosine phosphatases,<sup>43</sup> activin type 2

**Panel 2: Revised Bethesda guidelines for detection of patients at risk for HNPCC who should undergo microsatellite instability testing of tumour (only one criterion need be fulfilled),<sup>45</sup> and Amsterdam I and II criteria for clinical definition of HNPCC patients (all criteria must be met)<sup>13</sup>**

### Bethesda guidelines

- Colorectal cancer diagnosed in patient who is younger than 50 years
- Presence of synchronous, metachronous colorectal, or other HNPCC-associated tumours, irrespective of age\*
- Colorectal cancer with the MSI-H† histology‡ diagnosed in a patient who is younger than 60 years§
- Colorectal cancer diagnosed in one or more first degree relatives with an HNPCC-related tumour, with one of the cancers being diagnosed under the age 50 years.
- CRC diagnosed in two or more first or second degree relatives with HNPCC-related tumours, irrespective of age

### Amsterdam I and II criteria

- One individual diagnosed with colorectal cancer (or extracolonic HNPCC-associated tumours)¶ before age 50 years
- Two affected generations
- Three affected relatives, one a first-degree relative of the other two
- FAP should be excluded
- Tumours should be verified by pathological examination

\*HNPCC-related tumours include colorectal, endometrial, stomach, ovarian, pancreas, ureter and renal pelvis, biliary tract, and brain (usually glioblastoma as seen in Turcot's syndrome) tumours, sebaceous gland adenomas and keratoacanthomas in Muir-Torre syndrome, and carcinoma of the small bowel. †HSI-H=microsatellite instability-high in tumours refer to changes in two or more of the five US National Cancer Institute-recommended panels of microsatellite markers. ‡Presence of tumour infiltrating lymphocytes, Crohn's-like lymphocytic reaction, mucinous/signet-ring differentiation, or medullary growth pattern. §No consensus was reached among the workshop participants on whether to include the age criteria in guideline 3 above; participants voted to keep younger than 60 years in the guidelines. ¶Amsterdam II criteria: extracolonic HNPCC-associated tumours also considered.

receptor,<sup>44</sup> phosphatidylinositol 3-kinases,<sup>45</sup> and hCDC4<sup>46</sup> might also contribute to colorectal carcinogenesis.

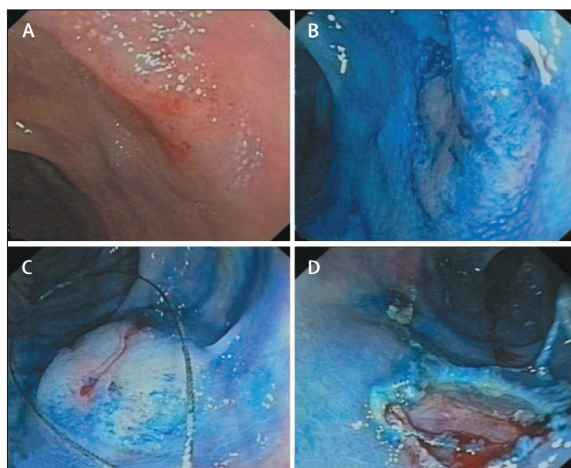
## Prognostic factors

Prognostic factors can be divided into three main groups: patient, treatment, and tumour related factors. We mainly discuss the last two.

### Treatment related prognostic factors

Outcome of patients with colorectal cancer depends on treatment. The so-called volume/outcome relation postulates that a higher caseload and specialisation results in improved outcome. Besides long-term prognosis, other outcome measurements are being investigated in this context (table 1). Most studies show that higher caseloads and specialisation are associated with better outcome.<sup>57</sup> It has been estimated that 43 318 life-years could be saved in the USA if all patients with colon cancer (n=93 045) were treated at very high volume hospitals.<sup>56</sup>

Quality of surgery and pathological work-up can be assessed by the number of removed lymph nodes. Patients with more such nodes have better prognosis in most studies, which relates to a more precise staging of



**Figure 1: Flat adenoma with high-grade intraepithelial neoplasia: chromoendoscopy and mucosal resection**

A: reddish mucosa in sigmoid. B: chromoendoscopy with methylene blue shows flat adenoma. Borders of lesion become clearly visible after staining. C: mucosal resection with snare after injection of saline in submucosal layer to lift lesion. D: Red muscularis propria becomes visible after complete resection of lesion.

the patients as well as to potential therapeutic benefits of more thorough lymphadenectomy.<sup>58</sup>

The status of the resection margin after surgery is one of the most important prognostic factors.<sup>59,60</sup> It is one of the links between treatment and tumour related prognostic factors, because it depends on surgical competence as well as on tumour biology. In rectal cancer surgery, assessment of completeness of the specimen is a valuable method of surgical quality control with proven prognostic effect.<sup>61</sup>

### Tumour related prognostic factors

The basis for therapeutic decisions is the TNM-system of the International Union Against Cancer (UICC, table 2).<sup>59</sup> This staging system does not allow precise prediction of prognosis for an individual patient. To overcome this limitation, molecular characterisation of the tumour has been advocated; many potential molecular prognostic markers have been described (panel 3).<sup>60,67-76</sup> None of these factors, however, is yet of any value in routine clinical practice. Since colorectal carcinogenesis is a complex mechanism, one genetic marker seems unlikely to predict individual prognosis. DNA arrays and tissue arrays could be more suitable in this respect. Using DNA microarrays, Bertucci and others<sup>77</sup> were able to divide a group of 22 patients with colon cancer into two subgroups of patients with a 5-year overall survival of 100% vs 30% ( $p=0.001$ ). Wang and colleagues<sup>78</sup> examined tumours from 74 patients with Dukes' B colon cancer with DNA microarray techniques, and defined a 23-gene signature profile that accurately predicted the clinical course in 78% of patients.

Since disseminated tumour cells are thought to be the basis for distant tumour recurrence after curative resection, detection of these cells is a logical approach to identify patients at higher oncological risk. The prognostic significance of these cells, however, is still under critical debate.<sup>79,80</sup> Detection of disseminated tumour cells in bone marrow samples could be a surrogate marker for assessing the effectiveness of neoadjuvant radiochemotherapy of rectal cancer.<sup>81</sup> Detection of tumour cells in blood samples obtained intraoperatively seems to be a valid technique for identification of intraoperative tumour cell shedding,

	Number of patients	Cases per year		Perioperative mortality		p
		Low volume	High volume	Low volume	High volume	
Perioperative mortality						
Urbach et al, 2004 <sup>47</sup>	18 898	<53*	≥53*	3.7%	3.8%	ns
Callahan et al, 2003 <sup>48</sup>	48 582	≤27†	>79†	6.3%	2.8%	<0.001
		<192*	>551*	5.8%	3.0%	<0.001
Dimick et al, 2003 <sup>49</sup>	20 862	<55*	>150*	3.7%	2.5%	0.006
Hodgson et al 2003 <sup>50</sup>	7257	<7*	>20*	4.8%	1.6%	<0.001
Birkmeyer et al, 2002 <sup>51</sup>	304 285	<33*	>124*	5.6%	4.5%	<0.001
Hannan et al, 2002 <sup>52</sup>	22 128	<3†	≥9†	4.8%	2.2%	<0.001
		<21*	≥63*	4.6%	2.1%	<0.001
Schrag et al, 2000 <sup>53</sup>	27 986	<58*	≥166*	5.5%	3.5%	<0.001
Harmon et al, 1999 <sup>54</sup>	9739	≤5†	>10†	4.5%	2.6%	<0.01
Economic outcome						
Harmon et al, 1999 <sup>54</sup>	9739	≤5†	>10†	LOS: 10.1	LOS: 9	<0.01
				\$13 025‡	\$11 642‡	<0.01
Sphincter preservation						
		Cases per year		Odds ratio of APR		
Hodgson et al, 2003 <sup>50</sup>	7257	≤7*	>20*	1.37	1	<0.05
Long-term outcome						
		Cases per year		Median survival/5-year survival		
Rabeneck et al, 2004 <sup>55</sup>	34 888	<25*	≥25*	1.0§	0.92§	<0.001
Finlayson et al, 2003 <sup>56</sup>	86 671	<17*	>65*	6.8 years	7.4 years	ng
Hodgson et al, 2003 <sup>50</sup>	7257	<7*	>20*	2.64§	1.0§	<0.05

ns=not significant. LOS=length of stay (days). APR=abdominoperineal resection. ng=not given. \*Cases per hospital. †Cases per surgeon. ‡Hospital charges. §Relative risk of dying from cancer. Only studies including more than 5000 patients presented.

**Table 1: Published studies about volume/outcome relation**



**T—primary tumour**

TX	Primary tumour cannot be assessed
T0	No evidence of primary tumour
Tis	Carcinoma in situ: intraepithelial or invasion of lamina propria
T1	Tumour invades submucosa
T2	Tumour invades muscularis propria
T3	Tumour invades through the muscularis propria into subserosa or into non-peritonealised pericolic or perirectal tissues
T4	Tumour directly invades other organs or structures and/or perforates visceral peritoneum

**N—regional lymph nodes**

NX	Regional lymph nodes cannot be assessed
N0	No regional lymph node metastasis
N1	Metastasis in 1 to 3 regional lymph nodes
N2	Metastasis in 4 or more regional lymph nodes

**M—distant metastasis**

MX	Distant metastasis cannot be assessed
M0	No distant metastasis
M1	Distant metastasis

Stage	T	N	M	5-year overall survival <sup>62-66</sup>
Stage I	T1, T2	N0	M0	80–95%
Stage IIA	T3	N0	M0	72–75%
Stage IIB	T4	N0	M0	65–66%
Stage IIIA	T1, T2	N1	M0	55–60%
Stage IIIB	T3, T4	N1	M0	35–42%
Stage IIIC	Any T	N2	M0	25–27%
Stage IV	Any T	Any N	M1	0–7%

**Table 2: TNM staging system for colorectal cancer and published survival rates for different stages<sup>59</sup>**

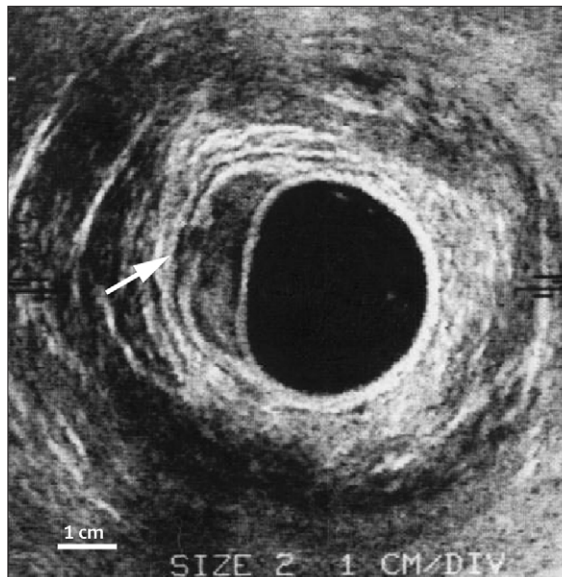
which probably is of prognostic relevance in some patient groups.<sup>82</sup>

## Diagnosis

Colonoscopy is the gold standard for diagnosis of colorectal cancer; in addition to physical examination, abdominal ultrasound and chest radiography are

### Panel 3: Molecular markers with potential prognostic importance

Tumour suppressor genes and oncogenes (*K-ras*, *c-myc*, *p53*, *DCC*, *smad4*, *nm23*)  
 Apoptosis and cell suicide-related genes (*bcl-2*, *BAX*)  
 DNA synthesis-related genes (*thymidylate synthase*, *thymidine phosphatase*)  
 Growth factors and growth factor receptor genes (*TGF $\alpha$* , *TGF $\beta$* , *HER-2/neu*, *EGFR*)  
 Mismatch repair genes (*MSH2*, *MLH1*)  
 Angiogenesis-related genes (*VEGF*)  
 Cyclins and cyclin dependent kinase inhibitors (*p27*, *p21*, *p16*)  
 Adhesion molecules and glycoprotein genes (*cd44*, *E-cadherin*, *ICAM-1*)  
 Markers of invasion (MMPs, urokinase-type plasminogen activator)  
 Proliferation indices (*Ki-67*, *Mib-1*, proliferation cell nuclear antigen)  
 Antioxidants (Superoxide dismutase, *GST-pi*)  
 Telomere length



**Figure 2: Endorectal ultrasound of rectal cancer**

Arrow indicates tumour infiltration of muscularis propria leading to classification uT2, N0.

routinely done. The necessity of routine preoperative CT scans is still debated because this method alters the surgical approach in only a few cases.<sup>83</sup>

Better imaging of rectal cancer is important for planning of treatment. Local staging can be done by endorectal ultrasound (figure 2), CT (figure 3), or MRI (figure 4).<sup>84</sup> High-resolution MRI is a promising tool for depiction of important anatomical structures such as the mesorectal fascia.<sup>85</sup> Comparison of cost and clinical effectiveness of preoperative staging procedures in rectal cancer indicated a significant advantage for MRI.<sup>86</sup>

Positron emission tomography (PET) is valuable for detection of recurrent colorectal cancer, but has little effect on staging of primary cancer.<sup>84</sup> New developments such as combining PET and CT cameras



**Figure 3: CT-scan of rectal cancer**

Arrow indicates tumour infiltration of prostate leading to classification uT4, N0.



**Figure 4: MRI of rectal cancer**

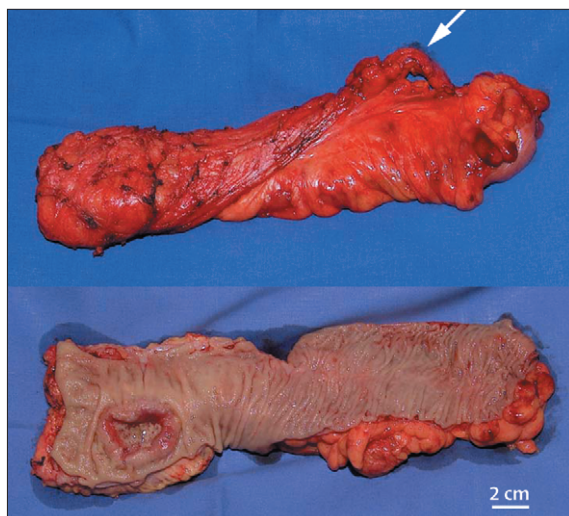
Arrow indicates tumour infiltration of prostate leading to classification uT4, N0 (as in figure 3).

might help further improve accuracy of PET imaging in primary cancer.<sup>87</sup>

No consensus has been reached about the most sensitive method for detection of liver metastases of colorectal cancer. A meta-analysis<sup>88</sup> showed that PET is the most sensitive modality, and is also especially valuable for detection of extrahepatic disease. However, no randomised study has yet proved the value of PET in this setting; therefore, CT and MRI remain the diagnostic standards.

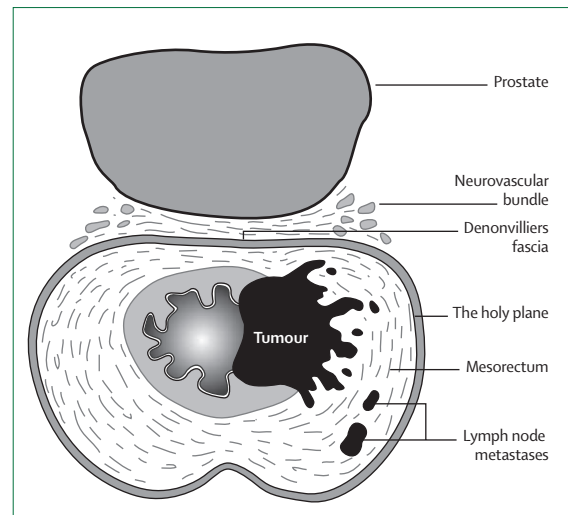
### Treatment

Surgery is the basis of therapy for colorectal cancer, and important developments have occurred.



**Figure 5: Specimen of low anterior resection (total mesorectal excision) of rectal cancer**

Arrow indicates inferior mesenteric artery. Note adequate distal margin of about 2 cm.



**Figure 6: Anatomical relations of the mesorectum**

The holy plane (according to Heald) is plane of dissection for total mesorectal excision, allowing complete removal of regional lymph nodes while sparing neurovascular bundles.<sup>89,90</sup>

### Surgery for rectal cancer

One of the most important advances for surgery of rectal cancer has been the concept of total mesorectal excision, which reduces local recurrences and perioperative morbidity (figures 5 and 6).<sup>89</sup> With good surgical technique and selection of patients, excellent results can be obtained by surgery alone without radiotherapy, even in lymph-node-positive patients.<sup>90</sup>

Management of cancers close to the dentate line has always been controversial. For some patients, sphincter-preserving surgery with a distal margin of 1 cm seems possible.<sup>91</sup> Whether quality of life after sphincter preservation for very low tumours is better than abdominoperineal resection is still debated. Improved quality of life after sphincter preservation has been shown after long-term follow-up.<sup>92</sup> Options for reconstruction after low anterior resection are straight anastomosis, side-to-end anastomosis, colonic J-pouch, and transverse coloplasty pouch.<sup>93–95</sup> The last three options seem to have better functional outcome than straight anastomosis, but further trials will have to clarify the best method.

### Fast-track surgery

Most of the traditional methods in colorectal surgery, such as urinary catheters, drains,<sup>96</sup> nasogastric tubes,<sup>97</sup> preoperative bowel preparation,<sup>98</sup> postoperative fasting, and intraoperative fluid excess<sup>99</sup> can be safely omitted. Fast-track surgery reduces hospital stay, perioperative morbidity, and costs.<sup>100–102</sup>

### Laparoscopic surgery

Colorectal cancer can be safely treated laparoscopically. Long-term oncological results are similar to the

conventional approach (table 3). The postulated advantages to short-term outcome are most probably less substantial than previously thought. A randomised masked study<sup>107</sup> showed no difference in length of hospital stay, duration of ileus, or gastrointestinal transit rates between both approaches with the fast-track approach.

### Sentinel lymph-node mapping

Stage II patients are judged to have a good prognosis, but many develop recurrences. In fact, such patients might not have been lymph-node negative but understaged instead. The sentinel lymph-node concept aims to enable the pathologist to analyse more meticulously one or a few lymph nodes harbouring the highest risk of metastatic disease.<sup>112</sup> One or more sentinel nodes can be detected in 90–100% of patients. An overall accuracy rate of around 96% has been reported for prediction of lymph-node status with staging of sentinel lymph nodes.<sup>112</sup> A false-negative rate of 56% was reported for rectal cancer.<sup>113</sup> Additionally, the prognostic significance of micrometastases in such lymph nodes has first to be proven before this approach can be introduced into standard clinical practice.

### Treatment of peritoneal carcinomatosis

Patients with peritoneal carcinomatosis are commonly judged to be incurable. However, aggressive cytoreduction combined with hyperthermic intraperitoneal chemotherapy can improve median survival from 12.6 to 22.3 months.<sup>114</sup> This strategy seems to be most effective in patients with minimum carcinomatosis after surgery and offers new hope for patients with advanced colorectal cancer.<sup>115–117</sup>

### Radiotherapy and radiochemotherapy

Radiotherapy aims to reduce local recurrence and improve survival for patients with rectal cancer. Traditionally, adjuvant radiochemotherapy was considered standard care for patients with stage II and III rectal cancer. Neoadjuvant radiochemotherapy was reserved for advanced rectal cancers (uT4). Recently, neoadjuvant methods have been advocated for stage II and III patients too on the basis of two theoretical advantages—better local tumour control and lower morbidity.<sup>118</sup>

The Dutch CKVO 95-04 trial<sup>119</sup> compared surgery alone (standard total mesorectal excision) with surgery combined with short-term preoperative radiation (5×5 Gy). After a median follow-up of 2 years, the local recurrence rate was 2.4% in the radiation group compared with 8.2% in the control group ( $p<0.001$ ); however, overall survival was not improved. Several important conclusions can be drawn from this trial: radiotherapy reduced the risk of local recurrence in low (inferior margin <10 cm from the anal verge) but not in high rectal cancers and was only beneficial in stage II

and III tumours.<sup>119</sup> Neoadjuvant short-term radiation did not lead to tumour downstaging and did not reduce the local recurrence rate in patients with positive margins.<sup>120,121</sup> A cost-utility analysis showed that preoperative short-term radiation is cost-effective.<sup>122</sup> The question has been raised as to whether surgical quality of excision was high enough in this trial to support the conclusion that radiation improves local control in patients undergoing optimised surgery, since detailed analysis identified tumour-free margins without spillage of tumour in only 77% of patients. Furthermore, the local recurrence rates for the control group were reported to be higher than 10% after longer follow-up.<sup>123</sup>

The German CAO/ARO/AIO-94 trial<sup>124</sup> compared preoperative with postoperative long-term radiochemotherapy (50.4 Gy/fluorouracil) in 823 patients with resectable rectal cancer (uT3/4, uN+); 5-year local recurrence rates were 6% versus 13%, respectively ( $p=0.006$ ). Distant-recurrence rates and survival were similar in both groups. Preoperative treatment was less toxic than was postoperative treatment. Stage distribution after surgery suggested a downstaging effect of preoperative radiochemotherapy. Of the patients whom the surgeon judged to need abdominoperineal resection before randomisation, 19% underwent a sphincter preserving procedure in the postoperative group compared with 39% in the preoperative group ( $p=0.004$ ).

	Number of patients	Included patients	Outcome with laparoscopic surgery
COST, 2004 <sup>103</sup>	872*	Colon cancer	Overall survival: no difference Disease free survival: no difference Morbidity: no difference Short-term outcome†: better‡
Janson et al, 2004 <sup>104</sup>	210*	Colon cancer	Total costs to society: no difference Cost of operation: higher Health-care costs: higher
Kiran et al, 2004 <sup>105</sup>	147§	Colorectal diseases	Blood loss: less Transfusions: fewer
Leung et al, 2004 <sup>106</sup>	403*	Rectosigmoid carcinomas	Overall survival: no difference Disease-free survival: no difference Operation time: longer Treatment costs: higher
Basse et al, 2003 <sup>107</sup>	32*	Colorectal diseases	Short-term outcome: better
Delaney et al, 2003 <sup>108</sup>	300§	Colorectal diseases	Short-term outcome: better Total costs: less
Lacy et al, 2002 <sup>109</sup>	219*	Colon cancer	Overall survival: better Disease-free survival: better (locoreg. relapse of 14% for open colectomy) Operation time: longer Morbidity: lower Blood loss: less Short-term outcome: better
Quah et al, 2002 <sup>116</sup>	170*	Rectal cancer	Male sexual function: worse
Weeks et al, 2002 <sup>111</sup>	449*	Colon cancer	Short-term outcome: slightly better

\*Randomised controlled trial. †Short-term outcome—eg, postoperative pain, postoperative bowel function, length of stay, quality of life. ‡Laparoscopic colectomy. §Matched pair analysis.

**Table 3: Trials comparing open versus laparoscopic surgery of colorectal cancer**

The randomised Lyon R98-02 trial<sup>125</sup> assessed addition of an endocavitary contact x-ray boost of 85 Gy to preoperative radiotherapy (13×3 Gy). Sphincter preservation was 76% in the boost group compared with 44% in the control group ( $p=0.004$ ), with no detrimental effects on treatment toxicity.<sup>125</sup>

Further studies are needed to compare short-term with long-term neoadjuvant radiation in patients with resectable rectal cancer. The role of postoperative chemotherapy in patients who undergo neoadjuvant radiation also needs to be clarified; the EORTC-study 22921 addresses this issue.<sup>126</sup> Further investigation is needed into alternative ways of giving chemotherapeutic drugs, such as continuous and chronomodulated infusion of fluorouracil, as well as new drugs such as capecitabine, oxaliplatin, or irinotecan. For example, the combination of radiation with oxaliplatin and capecitabine seems to be very effective in terms of tumour downstaging.<sup>127</sup> The effect of more intensified radiochemotherapy on survival is under investigation.

The value of radiotherapy in colon cancer patients with high risk for local recurrence was assessed by the intergroup protocol 0130.<sup>128</sup> A total of 222 of 700 planned patients had been enrolled when the study was terminated prematurely because of slow accrual. After a median follow-up of 6.6 years overall and disease-free survival did not differ. Even though this study has several limitations, adjuvant radiotherapy cannot be recommended for colon cancer at this time.

## Chemotherapy and immunotherapy

### Adjuvant treatment

The use of adjuvant fluorouracil-based chemotherapy in patients with stage III colon cancer is thought to be standard care, but is not routinely recommended in stage II colon cancer.<sup>129,130</sup> For specific high-risk stage II patients (eg, T4-tumours, inadequate number of removed lymph nodes, perforation, bowel obstruction, poor differentiation), however, chemotherapy should be considered. Gill and colleagues<sup>62</sup> developed a model to estimate survival benefit by adjuvant chemotherapy stratified by T-stage, nodal status, grading, and patient age, which might help decision-making with regard to adjuvant therapy.

The value of new agents has been investigated in the adjuvant setting. The MOSAIC study compared FOLFOX (oxaliplatin, fluorouracil, and leucovorin) with infusional fluorouracil-leucovorin in 2246 patients with curatively resected colon cancer stage II or III.<sup>131</sup> With a median follow-up of 37.9 months, 3-year disease-free survival was 78.2% in the FOLFOX group versus 72.9% in the control group ( $p=0.002$ ). No difference was noted for overall survival (87.7% vs 86.6%). 12% of patients in the FOLFOX arm suffered grade III neuropathy. A European trial (PETACC3/V-307) is comparing

FOLFIRI (irinotecan, fluorouracil, and leucovorin) with infusional fluorouracil-leucovorin. A trial comparing irinotecan plus bolus fluorouracil and leucovorin (IFL) with fluorouracil-leucovorin<sup>132</sup> had to be stopped early because of increased toxicity and a high early death rate in the IFL group. Cassidy and co-workers<sup>133</sup> compared the oral fluoropyrimidine capecitabine with bolus fluorouracil-leucovorin. Capecitabine had an improved safety profile and recurrence-free survival in stage III patients, although no difference was noted for disease-free and overall survival.<sup>133</sup>

Adjuvant therapy with a monoclonal antibody against the glycoprotein 17-1A (edrecolomab) was investigated in a randomised trial including 2761 patients.<sup>134</sup> Compared with fluorouracil and leucovorin, patients treated with edrecolomab had significantly reduced 3-year disease-free survival (53% versus 65.5%,  $p<0.0001$ ).

The best delivery route for adjuvant chemotherapy has been controversial. In a comparison of systemic versus intraportal fluorouracil-based chemotherapy, no survival difference could be established.<sup>135</sup> Hepatic-artery chemotherapy has been advocated after resection of liver metastases of colorectal cancer. A recent meta-analysis reported a reduced recurrence rate in the remaining liver by hepatic artery chemotherapy; however, overall survival was not improved.<sup>136</sup>

### Palliative chemotherapy

Palliative chemotherapy for patients with metastatic colorectal cancer aims to improve survival and quality of life. It is crucial that resectability of the metastases is assessed by experienced surgeons before and during chemotherapy to avoid missing the opportunity for potentially curative resection, since resection of metastatic disease (hepatic or pulmonary metastases) can lead to 5-year survival rates of 35–58%.<sup>137</sup> In this context, it is important to realise that about 15% of patients with liver metastases initially judged to be unresectable will become resectable after systemic chemotherapy, with excellent long-term survival. By applying new concepts such as preoperative portal vein embolisation, two-stage hepatectomy, or combinations of resection with tumour ablation, even more patients with liver metastases might eventually be cured.<sup>138</sup>

Major progress has been made by the introduction of regimens containing new cytotoxic drugs such as irinotecan or oxaliplatin (FOLFIRI, FOLFOX). Response rates between 39% and 55% and progression-free survival between 7 and 9 months are now possible. The new therapeutic regimens led to almost a doubling of survival compared with single-agent fluorouracil (median survival >20 months compared with about 11–12 months). Trials are assessing the ideal combination and sequence of these regimens. Tournigand and others<sup>139</sup> randomly assigned patients to FOLFIRI then FOLFOX versus the reverse sequence.



Median survival and response rates were similar in both groups; however, the toxicity profile was different in both groups, which is important when counselling patients. Goldberg and co-workers<sup>140</sup> compared IFL, FOLFOX, and IROX (irinotecan plus oxaliplatin). Patients receiving FOLFOX had significant longer median survival time of 19.5 months compared with 15 months for IFL and 17.4 months for IROX. Because IFL contains bolus fluorouracil compared with FOLFIRI (infusional fluorouracil), these data can be interpreted as an argument for use of infusional fluorouracil in the palliative setting.<sup>141</sup> The toxicity profile is also better for regimens with infusional fluorouracil. The sequence of different available regimens seems to be less important. However, survival is improved if patients receive all active substances during the course of their disease.<sup>142</sup> When considering the role of palliative (and adjuvant) chemotherapy with patients, the physician should be aware that risk reduction might differ from perceived benefit for the patient. As mentioned, not only extension of life, but also toxicity profile and questions about quality of life are important. Other factors, such as the patient's comorbidities, also need to be considered.

Oral administration of prodrugs of fluorouracil could be an alternative to infusional fluorouracil. Capecitabine improved response rates and equivalent overall survival compared with bolus fluorouracil-leucovorin.<sup>143</sup> Tegafur-uracil plus leucovorin also results in similar response rates and overall survival to fluorouracil-leucovorin. Capecitabine and tegafur-uracil have a favourable toxicity profile, but hand-foot syndrome develops in 25% of patients receiving capecitabine. Randomised trials are investigating these agents in combination with oxaliplatin or irinotecan.

Several new drugs are under development that target growth factors, their receptors, or the intracellular signalling cascade, some with proven efficacy in phase II and III trials. Bevacizumab, an antibody that targets vascular endothelial growth factor was tested in combination with IFL in first-line treatment in the palliative setting.<sup>144</sup> Median survival was 20.3 months in the IFL plus bevacizumab group compared with 15.6 months in the IFL plus placebo group, with response rates of 44.8% and 34.8%, respectively ( $p=0.004$ ). The combination regimen was well tolerated; main toxicities were mild proteinuria and grade III hypertension. In patients with metastatic colorectal cancer that is refractory to irinotecan, the combination of cetuximab (antibody-targeting epidermal growth-factor receptor) with irinotecan led to a response rate of 22.9% compared with 10.8% for cetuximab alone ( $p=0.007$ ).<sup>145</sup> Only patients with evidence of epidermal growth factor receptor expression in their tumours were included in this trial. Interestingly, degree of expression of this receptor did not correlate with clinical response. Therefore, it remains unclear whether the amount of such expression should be used to select patients for

treatment with cetuximab. Antibody therapy seems to enlarge the therapeutic arsenal, but the escalating costs need to be weighed up against the clinical benefit.<sup>146</sup> More trials with carefully defined treatment indications and long-term data are certainly needed before these treatment options can be accepted as standard therapy.<sup>147,148</sup>

For patients with unresectable metastases confined to the liver, intrahepatic arterial chemotherapy is a rational approach because liver metastases are mainly vascularised via the hepatic artery. In a randomised trial<sup>149</sup> no benefit was noted for intra-arterial therapy with fluorouracil compared with systemic therapy; however, compliance to the protocol was poor in the intra-arterial chemotherapy arm. Even though other studies reported encouraging response rates to such chemotherapy, this approach cannot be recommended outside of clinical trials.<sup>150</sup>

Recent advances in the understanding of tumour biology have led to the development of novel drugs targeting different important pathways for the malignant phenotype such as cell proliferation, invasion, and angiogenesis. Other approaches focus on cyclooxygenase 2 or aim to modulate immune response. Many of these drugs are currently in phase I and II clinical trials and promise to further expand the therapeutic options.<sup>151–153</sup>

### Response prediction

Prediction of the response to chemotherapy would allow its selective use. For fluorouracil-based chemotherapy, intratumoral thymidylate synthase, dihydropyrimidine dehydrogenase, and thymidine phosphorylase as well as microsatellite-instability status could be such markers.<sup>154–156</sup> For oxaliplatin, intratumoral concentrations of ERCC1 (excision repair cross-complementing), and for irinotecan, intratumoral concentrations of topoisomerase 1 seem to allow response prediction.<sup>157</sup> However, there are no randomised trials that prove that survival is improved when management is guided by these markers.

### Follow-up

The objectives of follow-up after curative resection of colorectal cancers are improvement of survival, psychological support, quality control of medical care, and facilitation of research.<sup>158</sup> Meta-analyses showed a significant improvement in survival after intense compared with routine follow-up (relative risk ratio 0.67–0.81).<sup>159–161</sup> The cost for one saved year of life by follow-up is estimated at about US\$6000–14000, which is judged to be acceptable.<sup>162</sup>

Because of the heterogeneity of published studies, defining how follow-up should be done is difficult, explaining the diversity of published guidelines.<sup>158</sup> Colonoscopy is recommended every 3–5 years to detect metachronous colorectal cancer. For patients who are

healthy and willing to undergo surgery for recurrence, the most useful test seems to be carcinoembryonic-antigen testing every 3–6 months for up to 5 years. Other recommendations also include regular liver and chest imaging, but the benefit of these tests is less well documented.<sup>158</sup> It has been suggested that regular surveillance CT scans in combination with carcinoembryonic-antigen measurements might be of value in the follow-up.<sup>163</sup> Further trials are necessary to specify the best follow-up for patients with colorectal cancer.<sup>164</sup>

### Future developments

The molecular genesis of colorectal cancer and therapies focusing on specific molecular targets attract the most attention and promise major advances. Individualised treatment according to genetic tumour profiles might become possible. However, we should not forget that better screening and prevention programmes could save many lives; public education should therefore be a top priority. In the future, prediction of the individual risk of colorectal cancer with individualised screening and prevention could become reality. Surgical quality control is very important, and should either result in better education of the surgical community or in centralisation of high-risk procedures. A multidisciplinary approach based on evidence-based medicine will allow further advances in the management of this common disease.

#### Conflict of interest statement

We declare that we have no conflict of interest.

#### Acknowledgments

We thank G Richter and P Kienle for providing CT, MRI, and endorectal ultrasound images, and R Kiesslich for providing chromoendoscopy images.

#### References

- Colorectal Cancer. In: Steward BW, Kleihues P, eds. World Cancer Report. Lyon: IARC Press, 2003: 198–202.
- Russo MW, Wei JT, Thiny MT, et al. Digestive and liver diseases statistics, 2004. *Gastroenterology* 2004; **126**: 1448–53.
- Jemal A, Tiwari RC, Murray T, et al. Cancer statistics, 2004. *CA Cancer J Clin* 2004; **54**: 8–29.
- Lynch HT, de la Chapelle A. Hereditary colorectal cancer. *N Engl J Med* 2003; **348**: 919–32.
- Mitchell RJ, Brewster D, Campbell H, et al. Accuracy of reporting of family history of colorectal cancer. *Gut* 2004; **53**: 291–95.
- Half EE, Bresalier RS. Clinical management of hereditary colorectal cancer syndromes. *Curr Opin Gastroenterol* 2004; **20**: 32–42.
- Sieber OM, Lipton L, Crabtree M, et al. Multiple colorectal adenomas, classic adenomatous polyposis, and germ-line mutations in MYH. *N Engl J Med* 2003; **348**: 791–99.
- Venesio T, Molatore S, Cattaneo F, Arrigoni A, Risio M, Ranzani GN. High frequency of MYH gene mutations in a subset of patients with familial adenomatous polyposis. *Gastroenterology* 2004; **126**: 1681–85.
- Bülow S, Björk J, Christensen IJ. Duodenal adenomatosis in familial adenomatous polyposis. *Gut* 2004; **53**: 381–86.
- Parc Y, Piquard A, Dozois RR, Parc R, Tiret E. Long-term outcome of familial adenomatous polyposis patients after restorative colectomy. *Ann Surg* 2004; **239**: 378–82.
- Grady WM. Genetic testing for high-risk colon cancer patients. *Gastroenterology* 2003; **124**: 1574–94.
- Bisgaard ML, Ripa R, Knudsen AL, Bülow S. Familial adenomatous polyposis patients without an identified APC germline mutation have a severe phenotype. *Gut* 2004; **53**: 266–70.
- Vasen HF, Watson P, Mecklin JP, Lynch HT. New clinical criteria for hereditary nonpolyposis colorectal cancer (HNPCC, Lynch syndrome) proposed by the international collaborative group on HNPCC. *Gastroenterology* 1999; **116**: 1453–56.
- Bandipalliam P, Garber J, Syngal S, Kolodner RD. Clinical presentation correlates with the type of mismatch repair gene involved in hereditary nonpolyposis colon cancer. *Gastroenterology* 2004; **126**: 936–67.
- Umar A, Boland R, Terdiman JP, et al. Revised Bethesda guidelines for hereditary nonpolyposis colorectal cancer (Lynch syndrome) and microsatellite instability. *J Natl Cancer Inst* 2004; **96**: 261–68.
- Itzkowitz SH, Hapraz N. Diagnosis and management of dysplasia in patients with inflammatory bowel disease. *Gastroenterology* 2004; **126**: 1634–48.
- Krok KL, Lichtenstein GR. Colorectal cancer in inflammatory bowel disease. *Curr Opin Gastroenterol* 2004; **20**: 43–48.
- Kahi CJ, Rex DK. Current and future trends in colorectal cancer screening. *Cancer Met Rev* 2004; **23**: 137–44.
- Winawer S, Fletcher R, Rex DK, et al. Colorectal cancer screening and surveillance: clinical guidelines and rationale—update based on new evidence. *Gastroenterology* 2003; **124**: 544–60.
- Weir HK, Thun MJ, Hankey BF, et al. Annual report to the nation on the status of cancer, 1975–2000, featuring the uses of surveillance data for cancer prevention and control. *J Natl Cancer Inst* 2003; **95**: 1276–99.
- Hurlstone DP, Cross SS, Slater R, Sanders DS, Brown S. Detecting diminutive colorectal lesions at colonoscopy: a randomised controlled trial of pan-colonic versus targeted chromoscopy. *Gut* 2004; **53**: 376–80.
- Kiesslich R, Fritsch J, Holtmann M, et al. Methylene blue-aided chromoendoscopy for the detection of intraepithelial neoplasia and colon cancer in ulcerative colitis. *Gastroenterology* 2003; **124**: 880–88.
- Kiesslich R, Neurath MF. Endoscopic mucosal resection: an evolving therapeutic strategy for non-polypoid colorectal neoplasia. *Gut* 2004; **53**: 1222–24.
- Kiesslich R, Burg J, Vieth M, et al. Confocal laser endoscopy for diagnosing intraepithelial neoplasias and colorectal cancer in vivo. *Gastroenterology* 2004; **127**: 706–13.
- Rosenblatt KP, Bryant-Greenwood P, Killian JK, et al. Serum proteomics in cancer diagnosis and management. *Ann Rev Med* 2004; **55**: 97–112.
- Cruz-Correa M, Cui H, Giardiello FM, et al. Loss of imprinting of insulin growth factor II gene: a potential heritable biomarker for colon neoplasia predisposition. *Gastroenterology* 2004; **126**: 964–70.
- Renahan AG, Zwahlen M, Minder C, O'Dwyer ST, Shalet SM, Egger M. Insulin-like growth factor (IGF)-I, IGF binding protein-3, and cancer risk: systematic review and meta-regression analysis. *Lancet* 2004; **363**: 1346–53.
- Stein CJ, Colditz GA. Modifiable risk factors for cancer. *Br J Cancer* 2004; **90**: 299–303.
- Hawk ET, Umar A, Viner JL. Colorectal Cancer Chemoprevention: an overview of the science. *Gastroenterology* 2004; **126**: 1423–47.
- Asano TK, McLeod RS. Nonsteroidal anti-inflammatory drugs and aspirin for the prevention of colorectal adenomas and cancer: a systematic review. *Dis Colon Rectum* 2004; **47**: 665–73.
- Brennan MF. Pre-emptive surgery and increasing demands for technical perfection. *Br J Surg* 2003; **90**: 3–4.
- Lynch JP, Hoops TC. The genetic pathogenesis of colorectal cancer. *Hematol Oncol Clin N Am* 2002; **16**: 775–810.
- Kondo Y, Issa JJP. Epigenetic changes in colorectal cancer. *Cancer Met Rev* 2004; **23**: 29–39.
- Kinzler K, Vogelstein B. Gatekeepers and caretakers. *Nature* 1997; **386**: 761–63.
- Calvert PM, Frucht H. The genetics of colorectal cancer. *Ann Intern Med* 2002; **137**: 603–12.
- Grady WM. Genomic instability and colon cancer. *Cancer Met Rev* 2004; **23**: 11–27.
- Jass JR, Whitehall VLJ, Young J, Leggett BA. Emerging concepts in colorectal neoplasia. *Gastroenterology* 2002; **123**: 862–76.

- 38 Soetikno RM, Kahng LS, Ono A, Fujii T. Flat and depressed colorectal neoplasms. *Curr Opin Gastroenterol* 2003; **19**: 69–75.
- 39 Itzkowitz SH, Yio X. Inflammation and cancer IV. Colorectal cancer in inflammatory bowel disease: the role of inflammation. *Am J Physiol Gastrointest Liver Physiol* 2004; **287**: G7–G17.
- 40 Rao M, Yang W, Seifalian AM, Winslet MC. Role of cyclooxygenase-2 in the angiogenesis of colorectal cancer. *Int J Colorectal Dis* 2004; **19**: 1–11.
- 41 Sinicropo FA, Gill S. Role of cyclooxygenase-2 in colorectal cancer. *Cancer Met Rev* 2004; **23**: 63–75.
- 42 Harman FS, Nicol CJ, Marin HE, Ward JM, Gonzalez FJ, Peters JM. Peroxisome proliferator-activated receptor-delta attenuates colon carcinogenesis. *Nat Med* 2004; **10**: 481–83.
- 43 Wang Z, Shen D, Parsons DW, et al. Mutational analysis of the tyrosine phosphatome in colorectal cancers. *Science* 2004; **304**: 1164–66.
- 44 Jung B, Doctolero RT, Tajima A, et al. Loss of activin type 2 protein expression in microsatellite unstable colon cancers. *Gastroenterology* 2004; **126**: 654–59.
- 45 Samuels A, Wang Z, Bardelli A, et al. High frequency of mutations of the PIK3CA gene in human cancers. *Science* 2004; **304**: 554.
- 46 Rajagopalan H, Jallepalli PV, Rago C, et al. Inactivation of hCDC4 can cause chromosomal instability. *Nature* 2004; **428**: 77–81.
- 47 Urbach DR, Baxter NN. Does it matter what a hospital is “high volume” for? Specificity of hospital volume-outcome associations for surgical procedures: analysis of administrative data. *BMJ* 2004; **328**: 737–40.
- 48 Callahan MA, Christos PJ, Gold HT, Mushlin AI, Daley J. Influence of surgical subspecialty training on in-hospital mortality for gastrectomy and colectomy patients. *Ann Surg* 2003; **238**: 629–39.
- 49 Dimick JB, Cowan JA, Upchurch GR, Colletti LM. Hospital volume and surgical outcomes for elderly patients with colorectal cancer in the United States. *J Surg Res* 2003; **114**: 50–56.
- 50 Hodgson DC, Zhang W, Zaslavsky AM, Fuchs CS, Wright WE, Ayanian JZ. Relation of hospital volume to colostomy rates and survival for patients with rectal cancer. *J Natl Cancer Inst* 2003; **95**: 708–16.
- 51 Birkmeyer JD, Siewers AE, Finlayson EVA, et al. Hospital volume and surgical mortality in the United States. *N Engl J Med* 2002; **346**: 1128–37.
- 52 Hannan EL, Radzyner M, Rubin D, Dougherty J, Brennan MF. The influence of hospital and surgeon volume on in-hospital mortality for colectomy, gastrectomy, and lung lobectomy in patients with cancer. *Surgery* 2002; **131**: 6–15.
- 53 Schrag D, Cramer LD, Bach PB, Cohen AM, Warren JL, Begg CB. Influence of hospital procedure volume on outcomes following surgery for colon cancer. *JAMA* 2000; **284**: 3028–35.
- 54 Harmon J, Tang D, Gordon T, et al. Hospital volume can serve as a surrogate for surgeon volume for achieving excellent outcomes in colorectal resection. *Ann Surg* 1999; **230**: 404–11.
- 55 Rabeneck L, Davila JA, Thompson M, El-Serag HB. Surgical volume and long-term survival following surgery for colorectal cancer in the veterans affairs health-care system. *Am J Gastroenterol* 2004; **99**: 668–75.
- 56 Finlayson EVA, Birkmeyer JD. Effect of hospital volume on life expectancy after selected cancer operations in older adults: a decision analysis. *J Am Coll Surg* 2003; **196**: 410–17.
- 57 Brennan MF. Safety in numbers. *Br J Surg* 2004; **91**: 653–54.
- 58 LeVoyer TE, Sigurdson ER, Hanlon AL, et al. Colon cancer survival is associated with increasing number of lymph nodes analyzed: a secondary survey of intergroup trial INT-0089. *J Clin Oncol* 2003; **21**: 2912–19.
- 59 Sobin LH, Wittekind C. UICC: TNM classification of malignant tumours. 6th ed. London: John Wiley & Sons, 2002.
- 60 Compton CC. Colorectal carcinoma: diagnostic, prognostic, and molecular features. *Mod Pathol* 2003; **16**: 376–88.
- 61 Nagtegaal ID, van der Velde CJH, van der Worp E, Kapiteijn E, Quirke P, van Krieken J. Macroscopic evaluation of rectal cancer resection specimen: clinical significance of the pathologist in quality control. *J Clin Oncol* 2002; **20**: 1729–34.
- 62 Gill S, Loprinzi CL, Sargent D, et al. Pooled analysis of fluorouracil-based adjuvant therapy for stage II and III colon cancer: who benefits and by how much? *J Clin Oncol* 2004; **22**: 1797–806.
- 63 Greene FL, Stewart AK, Norton HJ. A new TNM staging strategy for node-positive (stage III) colon cancer. *Ann Surg* 2002; **236**: 416–21.
- 64 Greene FL, Stewart AK, Norton HJ. New tumor-node-metastasis staging strategy for node-positive (stage III) rectal cancer: an analysis. *J Clin Oncol* 2004; **22**: 1778–84.
- 65 Gunderson LL, Sargent D, Tepper JE, et al. Impact of T and N stage and treatment on survival and relapse in adjuvant rectal cancer: a pooled analysis. *J Clin Oncol* 2004; **22**: 1785–96.
- 66 Staib L, Link KH, Blatz A, Beger HG. Surgery of colorectal cancer: surgical morbidity and five- and ten-year results in 2400 patients-monoinstitutional experience. *World J Surg* 2002; **26**: 59–66.
- 67 Kahlenberg MS, Sullivan SM, Witmer DD, Petrelli NJ. Molecular prognosis in colorectal cancer. *Surg Oncol* 2003; **12**: 173–86.
- 68 Galizia G, Lieto E, Ferraraccio F, et al. Determination of molecular marker expression can predict clinical outcome in colon carcinomas. *Clin Cancer Res* 2004; **10**: 3490–49.
- 69 Parc Y, Gueroult S, Mourra N, et al. Prognostic significance of microsatellite instability determine immunohistochemical staining of MSH2 and MLH1 in sporadic T3N0M0 colon cancer. *Gut* 2004; **53**: 371–75.
- 70 Allegra CJ, Paik S, Colangelo LH, et al. Prognostic value of thymidylate synthase, ki-67, and p53 in patients with Dukes' B and C colon cancer: a national cancer institute-national surgical adjuvant breast and bowel project collaborative study. *J Clin Oncol* 2003; **21**: 241–50.
- 71 Rau B, Sturm I, Lange H, et al. Dynamic expression profile of a WAF/CIP1 and ki-67 predicts survival in rectal carcinoma treated with preoperative radiochemotherapy. *J Clin Oncol* 2003; **21**: 3391–401.
- 72 Diep CB, Thorstensen L, Meling GI, Skovlund E, Rognum TO, Lothe RA. Genetic tumor markers with prognostic impact in Dukes' Stages B and C colorectal cancer patients. *J Clin Oncol* 2003; **21**: 820–29.
- 73 Gertler R, Rosenberg R, Stricker D, et al. Telomere length and human telomerase reverse transcriptase expression as markers for progression and prognosis of colorectal carcinoma. *J Clin Oncol* 2004; **22**: 1807–14.
- 74 Klump B, Nehls O, Okech T, et al. Molecular lesions in colorectal cancer: impact on prognosis? *Int J Colorectal Dis* 2004; **19**: 23–42.
- 75 Graziano F, Cascinu S. Prognostic molecular markers for planning adjuvant chemotherapy trials in Dukes' B colorectal cancer patients: how much evidence is enough? *Ann Oncol* 2003; **14**: 1026–38.
- 76 Popart S, Matakidou A, Houlston RS. Thymidylate synthase expression and prognosis in colorectal cancer: a systematic review and meta-analysis. *J Clin Oncol* 2004; **22**: 529–36.
- 77 Bertucci F, Salas S, Eysteries S, et al. Gene expression profiling of colon cancer by DNA microarrays and correlation with histoclinical parameters. *Oncogene* 2004; **23**: 1377–91.
- 78 Wang Y, Jatkoe T, Zhang Y, et al. Gene expression profiles and molecular markers to predict recurrence of Dukes' B colon cancer. *Ann Surg* 2004; **22**: 1564–71.
- 79 Feezor RJ, Copeland EM, Hochwald SN. Significance of micrometastases in colorectal cancer. *Ann Surg Oncol* 2002; **9**: 944–53.
- 80 Kienle P, Koch M. Minimal residual disease in gastrointestinal cancer. *Semin Surg Oncol* 2001; **20**: 282–93.
- 81 Kienle P, Koch M, Autschbach F, et al. Decreased detection rate of disseminated tumor cells of rectal cancer patients after preoperative chemoradiation: a first step towards a molecular surrogate marker for neoadjuvant treatment in colorectal cancer. *Ann Surg* 2003; **238**: 324–31.
- 82 Koch M, Kienle P, Hinz U, et al. Detection of hematogenous tumor cell dissemination predicts tumor relapse in patients undergoing surgical resection of colorectal liver metastases. *Ann Surg* (in press).
- 83 Mc Andrew MR, Saba AK. Efficacy of routine preoperative computed tomography scans in colon cancer. *Am Surg* 1999; **65**: 205–08.

- 84 Goh V, Halligan S, Bartram CI. Local radiological staging of rectal cancer. *Clin Radiol* 2004; **59**: 215–26.
- 85 Brown G, Kirkham A, Williams GT, et al. High-resolution MRI of the anatomy important in total mesorectal excision of the rectum. *AJR* 2004; **182**: 431–39.
- 86 Brown G, Davies S, Williams GT, et al. Effectiveness of preoperative staging in rectal cancer: digital rectal examination, endoluminal ultrasound or magnetic resonance imaging? *Br J Cancer* 2004; **91**: 23–29.
- 87 Cohade C, Osman M, Leal J, Wahl RL. Direct comparison of 18 F-FDG PET and PET/CT in patients with colorectal cancer. *J Nucl Med* 2003; **44**: 1797–803.
- 88 Kinkel K, Lu Y, Both M, Warren RS, Thoeni RF. Detection of hepatic metastases from cancers of the gastrointestinal tract by using non-invasive imaging methods (US, CT, MRI imaging, PET): a meta analysis. *Radiology* 2002; **224**: 748–56.
- 89 Cecil TD, Sexton R, Moran BJ, Heald RJ. Total mesorectal excision results in low local recurrence rates in lymph node-positive rectal cancer. *Dis Colon Rectum* 2004; **47**: 1145–50.
- 90 Simunovic M, Sexton R, Rempel E, Moran BJ, Heald RJ. Optimal preoperative assessment and surgery for rectal cancer may greatly limit the need for radiotherapy. *Br J Surg* 2003; **90**: 999–1003.
- 91 Ueno H, Mochizuki H, Hashiguchi Y, et al. Preoperative parameters expanding the indication of sphincter preserving surgery in patients with advanced low rectal cancer. *Ann Surg* 2004; **239**: 34–42.
- 92 Engel J, Kerr J, Schlesinger-Raab A, Eckel R, Sauer H, Hölzel D. Quality of life in rectal cancer patients. *Ann Surg* 2003; **238**: 203–13.
- 93 Z'graggen K, Maurer CA, Birrer S, Giachino D, Kern B, Büchler MW. A new surgical concept for rectal replacement after low anterior resection: the transverse colectomy pouch. *Ann Surg* 2001; **234**: 780–87.
- 94 Machado M, Nygren J, Goldman S, Ljungqvist O. Similar outcome after colonic pouch and side-to-end anastomosis in low anterior resection for rectal cancer: a prospective randomized trial. *Ann Surg* 2003; **238**: 214–20.
- 95 Fürst A, Suttner S, Agha A, Beham A, Jauch KW. Colonic j-pouch vs colectomy following resection of distal rectal cancer. *Dis Colon Rectum* 2003; **46**: 1161–66.
- 96 Jesus EC, Matos D, Castro A. Prophylactic routine anastomotic drainage in elective colorectal surgery: systematic review and meta-analysis. *Rev Assoc Med Bras* 2003; **49**: 214–19.
- 97 Cheatham ML, Chapman WC, Key SP, Sawyers JL. A meta-analysis of selective versus routine nasogastric decompression after elective laparotomy. *Ann Surg* 1995; **221**: 469–76.
- 98 Guenaga KF, Matos D, Castro A, Atallah AN, Wille-Jorgensen P. Mechanical bowel preparation for elective colorectal surgery. *Cochrane Database Syst Rev* 2003; **2**: CD001544.
- 99 Brandstrup B, Tonnesen H, Beier-Holgersen R, et al. Effects of intravenous fluid restriction of postoperative complications: comparison of two perioperative fluid regimes. *Ann Surg* 2003; **238**: 641–48.
- 100 Kehlet H, Dahl JB. Anaesthesia, surgery, and challenges in postoperative recovery. *Lancet* 2003; **362**: 1921–28.
- 101 Basse L, Thorbol JE, Lossel K, Kehlet H. Colonic surgery with accelerated rehabilitation or conventional care. *Dis Colon Rectum* 2004; **47**: 271–78.
- 102 Anderson A, McNaught C, MacFie J, Tring I, Barker T, Mitchell C. Randomized clinical trial of multimodal optimization and standard perioperative surgical care. *Br J Surg* 2003; **90**: 1497–504.
- 103 The Clinical Outcomes of Surgical Therapy Study Group. A comparison of laparoscopically assisted and open colectomy for colon cancer. *N Engl J Med* 2004; **350**: 2050–59.
- 104 Janson A, Björholt I, Carlsson P, et al. Randomized clinical trial of the costs of open and laparoscopic surgery for colonic cancer. *Br J Surg* 2004; **91**: 409–17.
- 105 Kiran RP, Delaney CP, Senagore AJ, Millward BL, Fazio VW. Operative blood loss and use of blood products after laparoscopic and conventional open colorectal operations. *Arch Surg* 2004; **139**: 39–42.
- 106 Leung KL, Kwok SPY, Lam SCW, et al. Laparoscopic resection of rectosigmoid carcinoma: prospective randomised trial. *Lancet* 2004; **363**: 1187–92.
- 107 Basse L, Madsen JL, Billesbolle P, Bardram L, Kehlet H. Gastrointestinal transit after laparoscopic vs open colonic resection. *Surg Endosc* 2003; **17**: 1919–22.
- 108 Delaney CP, Kiran RP, Senagore AJ, Brady K, Fazio VW. Case-matched comparison of clinical and financial outcome after laparoscopic or open colorectal surgery. *Ann Surg* 2003; **238**: 67–72.
- 109 Lacy AM, Garcia-Valdecasas JC, Delgado S, et al. Laparoscopy-assisted colectomy versus open colectomy for treatment of non-metastatic colon cancer: a randomised trial. *Lancet* 2002; **359**: 2224–29.
- 110 Quah HM, Jayne DG, Eu KW, Seow-Choen F. Bladder and sexual dysfunction following laparoscopically assisted and conventional open mesorectal resection for cancer. *Br J Surg* 2002; **89**: 1551–56.
- 111 Weeks RJ, Nelson H, Gelber S, Sargent D, Schroeder G. Short-term quality-of-life outcomes following laparoscopic-assisted colectomy vs open colectomy for colon cancer. *JAMA* 2002; **287**: 321–28.
- 112 Saha S, Dan AG, Beutler T, et al. Sentinel lymph node mapping technique in colon cancer. *Semin Oncol* 2004; **31**: 374–81.
- 113 Bembenek A, Rau B, Moesta T, et al. Sentinel lymph node biopsy in rectal cancer-not yet ready for routine use. *Surgery* 2004; **135**: 498–505.
- 114 Verwaal VJ, van Ruth S, de Bree E, et al. Randomized trial of cytoreduction and hyperthermic intraperitoneal chemotherapy versus systemic chemotherapy and palliative surgery in patients with peritoneal carcinomatosis of colorectal cancer. *J Clin Oncol* 2003; **21**: 3737–43.
- 115 Glehen O, Cotte E, Schreiber V, Sayag-Beaujard AC, Vignal J, Gilly FN. Intraperitoneal chemohyperthermia and attempted cytoreductive surgery in patients with peritoneal carcinomatosis of colorectal origin. *Br J Surg* 2004; **91**: 747–54.
- 116 Shen P, Hawksworth J, Lovato J, et al. Cytoreductive surgery and intraperitoneal hyperthermic chemotherapy with mitomycin C for peritoneal carcinomatosis from nonappendiceal colorectal carcinoma. *Ann Surg Oncol* 2004; **11**: 178–86.
- 117 Verwaal VJ, van Tinteren H, Zoetmulder FA. Predicting the survival of patients with peritoneal carcinomatosis of colorectal origin treated by aggressive cytoreduction and hyperthermic intraabdominal chemotherapy. *Br J Surg* 2004; **91**: 739–46.
- 118 Gunderson LL, Haddock MG, Schild SE. Rectal cancer: preoperative versus postoperative irradiation as a component of adjuvant treatment. *Semin Rad Oncol* 2003; **13**: 419–32.
- 119 Kapiteijn E, Marijnen CAM, Nagtegaal ID, et al. Preoperative radiotherapy combined with total mesorectal excision for resectable rectal cancer. *N Engl J Med* 2001; **345**: 638–46.
- 120 Marijnen CA, Nagtegaal ID, Kranenburg EK, et al. No downstaging after short-term preoperative radiotherapy in rectal cancer patients. *J Clin Oncol* 2001; **19**: 1976–84.
- 121 Marijnen CA, Nagtegaal ID, Kapiteijn E. Radiotherapy does not compensate for positive resection margins in rectal cancer patients: report of a multicenter randomized trial. *Int J Radiat Oncol Biol Phys* 2003; **55**: 1311–20.
- 122 van den Brink M, van den Hout W, Stiggelbout AM, et al. Cost-utility analysis of preoperative radiotherapy in patients with rectal cancer undergoing total mesorectal excision: the dutch colorectal cancer group. *J Clin Oncol* 2004; **22**: 244–53.
- 123 Hermanek P, Heald RJ. Pre-operative radiotherapy for rectal carcinoma? Has the case really been made for short course pre-operative radiotherapy if surgical standards for rectal carcinoma are optimal? *Colorectal Dis* 2004; **6**: 10–14.
- 124 Sauer R, Becker H, Hohenberger W, et al. Preoperative versus postoperative chemoradiotherapy for rectal cancer. *N Engl J Med* 2004; **351**: 1731–40.
- 125 Gerard JP, Chapet O, Nemoz C, et al. Improved sphincter preservation in low rectal cancer with high-dose preoperative radiotherapy: the Lyon R98-02 randomized trial. *J Clin Oncol* 2004; **22**: 2404–09.
- 126 Bosset JF, Calais G, Daban A, et al. Preoperative chemoradiotherapy versus preoperative radiotherapy in rectal cancer patients: assessment of acute toxicity and treatment compliance. Report of the 22921 randomised trial conducted by the EORTC radiotherapy group. *Eur J Cancer* 2004; **40**: 219–24.
- 127 Rödel C, Grabenbauer GG, Papadopoulos T, Hohenberger W, Schmoll HJ, Sauer R. Phase I/II trial of capecitabine, oxaliplatin, and radiation for rectal cancer. *J Clin Oncol* 2003; **21**: 3098–104.



- 128 Martenson JA, Willett CG, Sargent DJ, et al. Phase III study of adjuvant chemotherapy and radiation therapy compared with chemotherapy alone in the surgical adjuvant treatment of colon cancer: results of intergroup protocol 0130. *J Clin Oncol* 2004; **22**: 3277–83.
- 129 Benson AB, Schrag D, Somerfield MR, et al. American Society of Clinical Oncology recommendations on adjuvant chemotherapy for stage II colon cancer. *J Clin Oncol* 2004; **22**: 3408–19.
- 130 Figueredo A, Charette M, Maroun J, Brouwers M, Zuraw L. Adjuvant therapy for stage II colon cancer: a systematic review from the cancer care Ontario program in evidence-based care's gastrointestinal cancer disease site group. *J Clin Oncol* 2004; **22**: 3395–407.
- 131 Andre T, Boni C, Mounedji-Boudiaf L, et al. Oxaliplatin, Fluorouracil, and Leucovorin as adjuvant treatment for colon cancer. *N Engl J Med* 2004; **350**: 2343–51.
- 132 Saltz LB, Niedzwiecki D, Hollis DR, et al. Irinotecan plus fluorouracil/leucovorin (IFL) versus fluorouracil/leucovorin alone (FL) in stage III colon cancer (intergroup trial CALBG C89803). *Proc Am Soc Clin Oncol* 2004; abstract 3500.
- 133 Cassidy J, Scheithauer W, McKendrick J, Kröning H, Nowacki MP. Capecitabine versus bolus 5-fluorouracil/leucovorin (LV) as adjuvant therapy for colon cancer (the X-ACT study): efficacy results of a phase III trial. *Proc Am Soc Clin Oncol* 2004; abstract 3509.
- 134 Punt CJ, Nagy A, Douillard JY, et al. Edrecolomab alone or in combination with fluorouracil and folinic acid in the adjuvant treatment of stage III colon cancer: a randomised study. *Lancet* 2002; **360**: 671–77.
- 135 Labianca R, Fossati R, Zaniboni A, et al. Randomized trial of intraportal and/or systemic adjuvant chemotherapy in patients with colon carcinoma. *J Natl Cancer Inst* 2004; **96**: 750–58.
- 136 Nelson RL, Freels S. A systematic review of hepatic artery chemotherapy after hepatic resection of colorectal cancer metastatic to the liver. *Dis Colon Rectum* 2004; **47**: 739–45.
- 137 Fernandez FG, Drebin JA, Lineham DC, Dehdashti F, Siegel BA, Strasberg SM. Five-year survival after resection of hepatic metastases from colorectal cancer in patients screened by position emission tomography with F-18 fluorodeoxyglucose (FDG-PET). *Ann Surg* 2004; **240**: 438–47.
- 138 Adam R, Lucidi V, Bismuth H. Hepatic colorectal metastases: methods of improving resectability. *Surg Clin N Am* 2004; **84**: 659–71.
- 139 Tournigand C, Andre T, Achille E, et al. FOLFIRI followed by FOLFOX6 or the reverse sequence in advanced colorectal cancer: a randomised GERCOR study. *J Clin Oncol* 2004; **22**: 229–37.
- 140 Goldberg RM, Sargent DJ, Morton RF, et al. A randomized controlled trial of fluorouracil plus leucovorin, irinotecan, and oxaliplatin combinations in patients with previously untreated metastatic colorectal cancer. *J Clin Oncol* 2004; **22**: 23–30.
- 141 Sobrero AF. Scheduling of fluorouracil: a forget-me-not in the jungle of doublets. *J Clin Oncol* 2004; **22**: 4–6.
- 142 Grothey A, Sargent D, Goldberg RM, Schmoll HJ. Survival of patients with advanced colorectal cancer improves with the availability of fluorouracil-leucovorin, irinotecan, and oxaliplatin in the course of treatment. *J Clin Oncol* 2004; **22**: 1209–14.
- 143 van Cutsem E, Hoff PM, Harper P, et al. Oral capecitabine vs intravenous 5-fluorouracil and leucovorin: integrated efficacy data and novel analyses from two large, randomised trials. *Br J Cancer* 2004; **90**: 1190–97.
- 144 Hurwitz H, Fehrenbacher L, Novotny W, et al. Bevacizumab plus irinotecan, fluorouracil, and leucovorin for metastatic colorectal cancer. *N Engl J Med* 2004; **350**: 2335–42.
- 145 Cunningham D, Humblet Y, Siena S, et al. Cetuximab monotherapy and cetuximab plus irinotecan in irinotecan-refractory metastatic colorectal cancer. *N Engl J Med* 2004; **351**: 337–45.
- 146 Schrag D. The price tag on progress: chemotherapy for colorectal cancer. *N Engl J Med* 2004; **351**: 317–19.
- 147 Mayer RJ. Two steps forward in the treatment of colorectal cancer. *N Engl J Med* 2004; **350**: 2406–08.
- 148 Erlichman C, Sargent DJ. New treatment options for colorectal cancer. *N Engl J Med* 2004; **351**: 391–92.
- 149 Kerr J, McArdle CS, Ledermann J, et al. Intrahepatic arterial versus intravenous fluorouracil and folinic acid for colorectal cancer liver metastases: a multicentre randomised trial. *Lancet* 2003; **361**: 368–73.
- 150 Chan R, Kerr D. Hepatic arterial chemotherapy for colorectal cancer liver metastases: a review of advances in 2003. *Curr Opin Oncol* 2004; **16**: 378–84.
- 151 Diaz-Rubio E. New chemotherapeutic advances in pancreatic, colorectal, and gastric cancers. *Oncologist* 2004; **9**: 282–94.
- 152 Braun AH, Achterrath W, Wilke H, Vanhoefer U, Harstrick A, Preusser P. New systemic frontline treatment for metastatic colorectal carcinoma. *Cancer* 2004; **100**: 1558–77.
- 153 Koehne CH, Dubois RN. COX-2 inhibition and colorectal cancer. *Semin Oncol* 2004; **31** (2 suppl 7): 12–21.
- 154 Ribic CM, Sargent DJ, Moore MJ, et al. Tumor microsatellite-instability status as predictor of benefit from fluorouracil-based adjuvant chemotherapy for colorectal cancer. *N Engl J Med* 2003; **349**: 247–57.
- 155 Carethers JM, Smith EJ, Behling CA, et al. Use of 5-fluorouracil and survival in patients with microsatellite-unstable colorectal cancer. *Gastroenterology* 2004; **126**: 394–401.
- 156 Popat S, Matakidou A, Houlston RS. Thymidylate synthase expression and prognosis in colorectal cancer: a systematic review and meta-analysis. *J Clin Oncol* 2004; **22**: 529–36.
- 157 Adlard JW, Richman SD, Seymour MT, Quirke P. Prediction of the response of colorectal cancer to systemic therapy. *Lancet Oncol* 2002; **3**: 75–82.
- 158 Pfister DG, Benson AB, Somerfield MR. Surveillance strategies after curative treatment of colorectal cancer. *N Engl J Med* 2004; **350**: 2375–82.
- 159 Renehan AG, Egger M, Saunders MP, O'Dwyer S. Impact on survival of intensive follow up after curative resection for colorectal cancer: systematic review and meta-analysis of randomised trials. *BMJ* 2002; **324**: 1–8.
- 160 Jeffery GM, Hickey BE, Hider P. Follow-up strategies for patients treated for non-metastatic colorectal cancer (Cochrane Review). *Cochrane Database Syst Rev* 2002; **1**: CD002200.
- 161 Figueredo A, Rumble RB, Maroun J, et al. Follow-up of patients with curatively resected colorectal cancer: a practice guideline. *BMC Cancer* 2003; **3**: 26.
- 162 Renehan AG, O'Dwyer S, Whynes DK. Cost effectiveness analysis of intensive versus conventional follow up after curative resection for colorectal cancer. *BMJ* 2004; **328**: 81.
- 163 Chau I, Allen MJ, Cunningham D, et al. The value of routine serum carcino-embryonic antigen measurement and computed tomography in the surveillance of patients after adjuvant chemotherapy for colorectal cancer. *J Clin Oncol* 2004; **22**: 1420–29.
- 164 Johnson FE, Virgo KS. Follow-up for patients with colorectal cancer after curative-intent primary treatment. *J Clin Oncol* 2004; **22**: 1363–65.