

EDITORIAL



Left Bundle-Branch Block Myopathy in Heart Failure

Jeffrey J. Goldberger, M.D., M.B.A.

Cardiac-resynchronization therapy (CRT), also known as biventricular pacing, has emerged as a pivotal therapy in selected patients with heart failure with reduced ejection fraction. The mechanism of benefit of CRT is complex and not yet completely understood, but it is probably multifactorial, with effects on contractile function, β -adrenergic responsiveness, and other cellular functions.¹ The dramatic clinical improvement that has been observed in some patients with New York Heart Association (NYHA) class III or IV heart failure² has prompted the evaluation of the therapeutic benefit of CRT in expanded populations.

Goldenberg et al.³ now present in the *Journal* the long-term follow-up results of the Multicenter Automatic Defibrillator Implantation Trial with Cardiac Resynchronization Therapy (MADIT-CRT). This randomized clinical trial enrolled 1820 patients and, with an average follow-up of 2.4 years, showed that CRT was associated with a significant reduction in the primary combined end point of death from any cause or a nonfatal heart-failure event (whichever came first).⁴ The outcome was predominantly driven by heart-failure events. The continued follow-up of a subset of these patients for up to 7 years, as reported in the current article, provides important information on each component of the originally reported combined end point. In patients with left bundle-branch block, the reported 41% reduction in mortality, with an absolute reduction of 11 percentage points, is particularly impressive when added to the therapeutic benefit of the background therapy of beta-blockers and angiotensin-converting-enzyme inhibitors or angiotensin-receptor blockers, each of which already has substantial effects to improve survival. This solidifies the role of

CRT in providing long-term benefits in terms of morbidity and mortality in patients with mild heart failure with reduced ejection fraction and left bundle-branch block.

Equally important is the demonstration that patients with a wide QRS complex without left bundle-branch block do not benefit from CRT and may even be harmed. The mortality among these patients at 5 years was approximately 20%, which is similar to the mortality among patients with left bundle-branch block treated with the implantable cardioverter-defibrillator only. Yet, the very same therapy that resulted in a substantial improvement in patients with left bundle-branch block actually increased mortality among patients with a wide QRS complex without left bundle-branch block. CRT was also recently reported to increase mortality among patients with mechanical dyssynchrony and a QRS duration of less than 130 msec.⁵ These findings should provide a cautionary flag that CRT, as currently implemented, is not necessarily beneficial when used in groups of patients without the primary abnormality that is remedied by CRT (i.e., left bundle-branch block).

There is a long history of attempts at “pacing therapy” for heart failure with reduced ejection fraction. The initial report of the benefit of right ventricular pacing⁶ would, by today’s standards, be considered misguided. This mode of pacing produces a mild decline in left ventricular ejection fraction, one that persists for more than 1 day even after the cessation of pacing.⁷ Similarly, isolated left bundle-branch block produces mild left ventricular dysfunction.⁸ Interestingly, a considerable “left bundle-branch block myopathy” that can be reversed with CRT may develop in a very small number of patients with normal

left ventricular function at baseline and either left bundle-branch block⁹ or right ventricular pacing.¹⁰ Although isolated right ventricular pacing in patients with left ventricular dysfunction has been shown to have detrimental clinical effects,¹¹ isolated left ventricular pacing has been shown to produce clinical results that are equivalent to biventricular pacing.¹²

These findings are consistent with the notion that left bundle-branch block and right ventricular pacing generally produce a low-grade myopathy, even in the context of a structurally normal heart.⁸ However, the synergy between heart failure with reduced ejection fraction and left bundle-branch block myopathy may produce substantial functional and clinical decline over time that is ameliorated by CRT (or isolated left ventricular pacing). Better understanding of the pathophysiology of this process and its “antidote” could inform the development of new pacing strategies that may be helpful in the setting of other conduction abnormalities.

In some cases, in order to provide timely results, large, randomized clinical trials use either surrogate or combined end points. This approach can enhance the number of events, which is one of the main drivers of the statistical power of a study. Although this approach can accelerate the identification of promising therapies, it can also cloud the interpretation of the results, particularly when end points with different clinical implications, such as heart-failure events and death, are combined. Moreover, the longevity in patients with mild heart failure and the expected device longevity both exceed 5 years; thus, when deploying a costly therapy such as CRT, patients, their physicians, and society wish to appreciate whether there are sustained benefits from the therapy. The present article provides this information and serves as a strong impetus to pursue CRT in patients with mild heart failure with reduced ejection fraction and left bundle-branch block. All those responsible for pursuing and supporting

long-term follow-up should be congratulated for this effort. Funding agencies and investigators should take note of the value of such intermediate to long-term studies and promote their execution.

Disclosure forms provided by the author are available with the full text of this article at NEJM.org.

From the Center for Cardiovascular Innovation and the Division of Cardiology, Feinberg School of Medicine, Northwestern University, Chicago.

This article was published on March 30, 2014, at NEJM.org.

1. Kirk JA, Kass DA. Electromechanical dyssynchrony and resynchronization of the failing heart. *Circ Res* 2013;113:765-76.
2. Abraham WT, Fisher WG, Smith AL, et al. Cardiac resynchronization in chronic heart failure. *N Engl J Med* 2002;346:1845-53.
3. Goldenberg I, Kutyifa V, Klein HU, et al. Survival with cardiac-resynchronization therapy in mild heart failure. *N Engl J Med*. DOI: 10.1056/NEJMoa1401426.
4. Moss AJ, Hall WJ, Cannom DS, et al. Cardiac-resynchronization therapy for the prevention of heart-failure events. *N Engl J Med* 2009;361:1329-38.
5. Ruschitzka F, Abraham WT, Singh JP, et al. Cardiac-resynchronization therapy in heart failure with a narrow QRS complex. *N Engl J Med* 2013;369:1395-405.
6. Hochleitner M, Hörtnagl H, Ng CK, Hörtnagl H, Gschnitzer F, Zechmann W. Usefulness of physiologic dual-chamber pacing in drug-resistant idiopathic dilated cardiomyopathy. *Am J Cardiol* 1990;66:198-202.
7. Nahlawi M, Waligora M, Spies SM, Bonow RO, Kadish AH, Goldberger JJ. Left ventricular function during and after right ventricular pacing. *J Am Coll Cardiol* 2004;44:1883-8.
8. De Nardo D, Antolini M, Pituccio G, et al. Effects of left bundle branch block on left ventricular function in apparently normal subjects: study by equilibrium radionuclide angiography at rest. *Cardiology* 1988;75:365-71.
9. Vaillant C, Martins RP, Donal E, et al. Resolution of left bundle branch block-induced cardiomyopathy by cardiac resynchronization therapy. *J Am Coll Cardiol* 2013;61:1089-95.
10. Dreger H, Maethner K, Bondke H, Baumann G, Melzer C. Pacing-induced cardiomyopathy in patients with right ventricular stimulation for >15 years. *Europace* 2012;14:238-42.
11. Wilkoff BL, Cook JR, Epstein AE, et al. Dual-chamber pacing or ventricular backup pacing in patients with an implantable defibrillator: the Dual Chamber and VVI Implantable Defibrillator (DAVID) Trial. *JAMA* 2002;288:3115-23.
12. Liang Y, Pan W, Su Y, Ge J. Meta-analysis of randomized controlled trials comparing isolated left ventricular and biventricular pacing in patients with chronic heart failure. *Am J Cardiol* 2011;108:1160-5.

DOI: 10.1056/NEJMe1402676

Copyright © 2014 Massachusetts Medical Society.

ORIGINAL ARTICLE

Survival with Cardiac-Resynchronization Therapy in Mild Heart Failure

Ilan Goldenberg, M.D., Valentina Kutiyfa, M.D., Ph.D., Helmut U. Klein, M.D.,
David S. Cannom, M.D., Mary W. Brown, M.S., Ariela Dan, Ph.D.,
James P. Daubert, M.D., N.A. Mark Estes III, M.D., Elyse Foster, M.D.,
Henry Greenberg, M.D., Josef Kautzner, M.D., Robert Klempfner, M.D.,
Malte Kuniss, M.D., Bela Merkely, M.D., Ph.D., Marc A. Pfeffer, M.D., Ph.D.,
Aurelio Quesada, M.D., Ph.D., Sami Viskin, M.D., Scott McNitt, M.S.,
Bronislava Polonsky, M.S., Ali Ghanem, M.D., Scott D. Solomon, M.D.,
David Wilber, M.D., Wojciech Zareba, M.D., Ph.D., and Arthur J. Moss, M.D.

ABSTRACT

BACKGROUND

The Multicenter Automatic Defibrillator Implantation Trial with Cardiac Resynchronization Therapy (MADIT-CRT) showed that early intervention with cardiac-resynchronization therapy with a defibrillator (CRT-D) in patients with an electrocardiographic pattern showing left bundle-branch block was associated with a significant reduction in heart-failure events over a median follow-up of 2.4 years, as compared with defibrillator therapy alone.

METHODS

We evaluated the effect of CRT-D on long-term survival in the MADIT-CRT population. Post-trial follow-up over a median period of 5.6 years was assessed among all 1691 surviving patients (phase 1) and subsequently among 854 patients who were enrolled in post-trial registries (phase 2). All reported analyses were performed on an intention-to-treat basis.

RESULTS

At 7 years of follow-up after initial enrollment, the cumulative rate of death from any cause among patients with left bundle-branch block was 18% among patients randomly assigned to CRT-D, as compared with 29% among those randomly assigned to defibrillator therapy alone (adjusted hazard ratio in the CRT-D group, 0.59; 95% confidence interval [CI], 0.43 to 0.80; $P < 0.001$). The long-term survival benefit of CRT-D in patients with left bundle-branch block did not differ significantly according to sex, cause of cardiomyopathy, or QRS duration. In contrast, CRT-D was not associated with any clinical benefit and possibly with harm in patients without left bundle-branch block (adjusted hazard ratio for death from any cause, 1.57; 95% CI, 1.03 to 2.39; $P = 0.04$; $P < 0.001$ for interaction of treatment with QRS morphologic findings).

CONCLUSIONS

Our findings indicate that in patients with mild heart-failure symptoms, left ventricular dysfunction, and left bundle-branch block, early intervention with CRT-D was associated with a significant long-term survival benefit. (Funded by Boston Scientific; ClinicalTrials.gov numbers, NCT00180271, NCT01294449, and NCT02060110.)

The authors' affiliations are listed in the Appendix. Address reprint requests to Dr. Goldenberg at Leviev Heart Center and Israeli Association for Cardiovascular Trials, Sheba Medical Center and Tel Aviv University, Tel Hashomer 5265601, Israel, or at ilan.goldenberg@sheba.health.gov.il; or to Dr. Moss at the Heart Research Follow-up Program, University of Rochester Medical Center, 265 Crittenden Blvd., CU 420653, Rochester, NY 14642-0653, or at heartajm@heart.rochester.edu.

Drs. Goldenberg, Kutiyfa, Klein, and Moss contributed equally to this article.

This article was published on March 30, 2014, at NEJM.org.

DOI: 10.1056/NEJMoa1401426

Copyright © 2014 Massachusetts Medical Society.

THE MULTICENTER AUTOMATIC DEFIBrillator Implantation Trial with Cardiac Resynchronization Therapy (MADIT-CRT) showed the safety and effectiveness of cardiac-resynchronization therapy (CRT) with a defibrillator (CRT-D) in patients with asymptomatic or mildly symptomatic heart failure, a reduced ejection fraction, and a prolonged QRS duration.¹ The study showed that treatment with CRT-D was associated with a 34% relative reduction in the risk of nonfatal heart-failure events or death from any cause, as compared with implantable cardioverter-defibrillator (ICD) therapy alone over a median follow-up period of 2.4 years. The benefit of CRT-D in the trial was primarily driven by a significant relative reduction of 41% in the risk of nonfatal heart-failure events¹ and was subsequently shown to be restricted to patients with an electrocardiographic (ECG) pattern showing left bundle-branch block.² Thus, questions regarding the ability of CRT to reduce mortality among patients with asymptomatic or mildly symptomatic heart failure remained unanswered. In the present study, we prospectively assessed the long-term outcome of the patients enrolled in MADIT-CRT.

METHODS

STUDY POPULATION

The design, protocol, and results of MADIT-CRT have been published previously.^{1,3} Briefly, 1820 patients with ischemic cardiomyopathy (New York Heart Association [NYHA] functional class I or II) or nonischemic cardiomyopathy (NHYA functional class II only), a left ventricular ejection fraction of 30% or less, and a prolonged QRS duration (≥ 130 msec) were randomly assigned in a 3:2 ratio to receive CRT-D or ICD therapy. All eligible patients met the guideline criteria for ICD therapy. Of the 1820 patients who were enrolled in MADIT-CRT, 1271 (70%) were enrolled at 88 centers in the United States, and 549 (30%) were enrolled at 24 centers in Europe, Israel, and Canada.

DATA ACQUISITION AND PATIENT FOLLOW-UP

MADIT-CRT was carried out from December 22, 2004, through June 22, 2009. After the publication of the primary results,¹ post-trial follow-up was conducted for all 1691 surviving study participants until September 10, 2010 (phase 1 of the extended follow-up). After September 10, 2010,

ongoing patient follow-up (phase 2) was conducted at the 48 U.S. centers that agreed to participate in the long-term follow-up requested by the Food and Drug Administration for patients enrolled in the United States (coordinated by the Heart Research Follow-up Program at the University of Rochester Medical Center, Rochester, New York) and at 23 of the 24 non-U.S. centers (coordinated by the Israeli Association for Cardiovascular Trials at Sheba Medical Center, Tel Hashomer, Israel), involving a total of 854 patients. A total of 40 U.S. centers declined to participate in the phase 2 registry.

The clinical characteristics of the patients who enrolled and those who did not enroll in phase 2 of the post-trial follow-up are shown in Table S1 in the Supplementary Appendix, available with the full text of this article at NEJM.org. Both phases of the post-trial follow-up were approved by the institutional review board at each participating center, and all the patients provided written informed consent. The numbers of patients enrolled in the trial and in the post-trial follow-up phases are shown in Figure 1.

All the authors were involved in the study design, data collection, and analysis; participated in the writing of the manuscript; and made the decision to submit the manuscript for publication. The commercial sponsor had no role in the study design, data accrual or analysis, or manuscript preparation or review. All the authors vouch for the accuracy and completeness of the reported findings and for the fidelity of the study to the protocol.

DEFINITIONS AND END POINTS

The original MADIT-CRT protocol did not specify the evaluation of a potential differential effect of CRT-D with respect to QRS morphologic findings at baseline (in other respects, the current report is true to the protocol). However, after the publication of the primary report,¹ analyses were performed comparing patients who had left bundle-branch block (70% of the study patients) with those who did not have left bundle-branch block (30%, including 13% with right bundle-branch block and 17% with an intraventricular conduction delay), which suggested that the reduced risk of the primary end point with CRT-D was largely, or even entirely, in the subgroup of patients with left bundle-branch block.²

On the basis of this post-trial observation, the analysis in the present study evaluated the dif-

ferential effects of CRT-D according to baseline QRS morphologic findings — specifically, left bundle-branch block or no left bundle-branch block. Two patients with missing data regarding QRS pattern at enrollment were excluded from the present study. Thus, the final study sample included the 1818 patients from MADIT-CRT for whom baseline ECG data were available.

The primary end point of the current study was death from any cause. Secondary end points included a nonfatal heart-failure event and the combined end point of a nonfatal heart-failure event or death, whichever occurred first.

STATISTICAL ANALYSIS

All analyses in the present study were carried out on an intention-to-treat basis (i.e., according to the original treatment assignment, regardless of in-trial or post-trial crossovers). Variables were expressed as means \pm SD, and categorical data were summarized as frequencies and percentages. The clinical characteristics of the patients at baseline were compared between the subgroups, with the use of the Kruskal–Wallis test for continuous variables and the chi-square test or Fisher’s exact test for dichotomous variables.

The Kaplan–Meier method was used to determine cumulative probabilities of death from any cause and nonfatal heart-failure events from the time of enrollment in MADIT-CRT through post-trial follow-up, according to treatment group, with between-group comparisons of cumulative event rates calculated by means of the log-rank test. The number of patients who would need to be treated with CRT-D to save one life was calculated as the inverse of the survival difference between the two treatment groups at each time point.

Multivariate Cox proportional-hazards regression analyses were used to evaluate the effect of CRT-D on the two end points of death from any cause and a nonfatal heart-failure event and on the combined end point of a nonfatal heart-failure event or death (whichever came first), from the time of enrollment in MADIT-CRT through post-trial follow-up. The Cox model was adjusted for relevant clinical covariates with the use of best-subset regression modeling (including age, serum creatinine level, presence or absence of diabetes mellitus, cause of cardiomyopathy, left ventricular end-systolic volume, QRS duration, NYHA functional class 3 months before enrollment, and smoking status). The benefit of CRT-D thera-

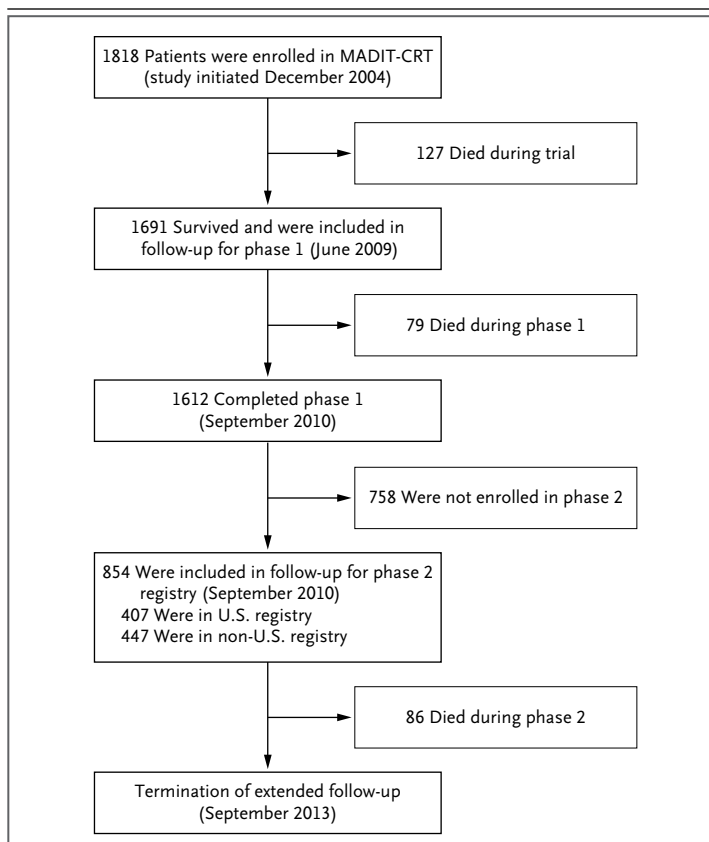


Figure 1. Study Design.

The population of the present study consisted of all the patients included in the Multicenter Automatic Defibrillator Implantation Trial with Cardiac Resynchronization Therapy (MADIT-CRT),¹ with the exclusion of two patients for whom baseline electrocardiographic data regarding QRS morphologic findings were not available.

py as compared with ICD therapy alone among patients with left bundle-branch block and those without left bundle-branch block was assessed by including a term for interaction between treatment and presence or absence of left bundle-branch block in the multivariate Cox models.

Since the assessment of the interaction between QRS morphologic findings and treatment was not prespecified in the original protocol, we also carried out a post-trial landmark analysis (i.e., with the follow-up time beginning on June 23, 2009, which was after trial closure on June 22, 2009). The landmark Cox model was adjusted for the same covariates listed above and for the term for interaction between treatment and presence or absence of left bundle-branch block.

All statistical tests were two-sided, and a P value of less than 0.05 was considered to indicate

statistical significance. The P values for interaction are reported. Analyses were carried out with the use of SAS software, version 9.3 (SAS Institute).

RESULTS

PATIENTS

Phase 1 of the post-trial follow-up was carried out from June 2009 through September 2010 and included all surviving patients enrolled in MADIT-CRT; phase 2 was conducted through September 2013. The median follow-up of the enrolled patients during the trial was 2.4 years (interquartile range, 1.8 to 3.2), and the median follow-up after the trial was 5.6 years (interquartile range, 5.1 to 6.4). The clinical characteristics of the 854 patients who participated in phase 2 of the extended follow-up were similar in the ICD-only and CRT-D groups (Table 1).

During long-term follow-up, 171 of the 1818 patients (9%) crossed over from ICD therapy alone to CRT-D therapy, and 92 (5%) crossed over from CRT-D to ICD therapy alone. Patients who crossed over from ICD to CRT-D therapy had several baseline characteristics that put them at higher risk than those who crossed over from CRT-D to ICD or those who did not cross over, including a higher serum creatinine level, a lower ejection fraction, and larger left ventricular volumes.

CRT-D IN PATIENTS WITH LEFT BUNDLE-BRANCH BLOCK

Kaplan–Meier estimates of death from any cause during the period from enrollment through 7 years of follow-up in the two treatment groups are shown in Figure 2A. The curves diverge at 1 year and continue to have separate paths thereafter, with significantly lower mortality among patients randomly assigned to CRT-D therapy than among those randomly assigned to ICD therapy alone ($P=0.002$ by the log-rank test without adjustment). Thus, at 7 years of follow-up, the cumulative rate of death from any cause among patients with left bundle-branch block was 29% in the ICD-only group, as compared with 18% in the CRT-D group. The survival difference corresponded to nine patients who would need to be treated with CRT-D to save one life within 7 years.

The cumulative probability of a nonfatal heart-failure event during 7 years of follow-up was also significantly lower among patients randomly assigned to CRT-D than among those randomly assigned to ICD therapy alone ($P<0.001$ by the log-rank test without adjustment, for the overall difference during follow-up). The event rates separated at the time of enrollment, and the separa-

Table 1. Clinical, Electrocardiographic, and Echocardiographic Characteristics of the Patients Enrolled in Phase 2 of the Extended Follow-up.*

Characteristic	ICD-Only Group	CRT-D Group	P Value
	(N=327)	(N=527)	
	no. (%)		
Female sex	75 (23)	128 (24)	0.65
Age ≥ 65 yr	158 (48)	262 (50)	0.69
Ischemic cardiomyopathy	166 (51)	279 (53)	0.54
NYHA class I	51 (16)	73 (14)	0.48
NYHA class III or IV >3 mo before enrollment	39 (12)	53 (10)	0.38
QRS duration <150 msec	103 (31)	164 (31)	0.91
Left ventricular ejection fraction $\leq 25\%$	210 (64)	324 (61)	0.42
Left bundle-branch block	240 (73)	394 (75)	0.66
Heart rate ≥ 80 beats/min	46 (14)	73 (14)	0.91
Body-mass index ≥ 30 †	109 (33)	178 (34)	0.83
Blood urea nitrogen >25 mg/dl‡	77 (24)	125 (24)	0.99
Serum creatinine ≥ 1.4 mg/dl§	60 (18)	90 (17)	0.64
Previous CABG	76 (23)	145 (28)	0.17
Diabetes mellitus	77 (24)	152 (29)	0.10
Hypertension	207 (63)	340 (65)	0.74
Previous myocardial infarction¶	129 (40)	223 (43)	0.47
Current smoker	39 (12)	56 (11)	0.53
Previous arrhythmia			
Atrial	39 (12)	54 (10)	0.45
Ventricular	23 (7)	44 (8)	0.50
Medications			
ACE inhibitor	250 (76)	420 (80)	0.26
ARB	73 (22)	104 (20)	0.36
ACE inhibitor or ARB	318 (97)	510 (97)	0.70
Amiodarone	29 (9)	34 (6)	0.19
Beta-blocker	311 (95)	498 (94)	0.70
Diuretic	233 (71)	359 (68)	0.33

* ACE denotes angiotensin-converting enzyme, ARB angiotensin-receptor blocker, CABG coronary-artery bypass grafting, CRT-D cardiac-resynchronization therapy with defibrillator, ICD implantable cardioverter-defibrillator, and NYHA New York Heart Association.

† The body-mass index is the weight in kilograms divided by the square of the height in meters.

‡ To convert the value for blood urea nitrogen to millimoles per liter, multiply by 0.357.

§ To convert the value for creatinine to millimoles per liter, multiply by 88.4.

¶ Data were missing for 16 patients (8 patients in each group).

tion was maintained (Fig. S1 in the Supplementary Appendix).

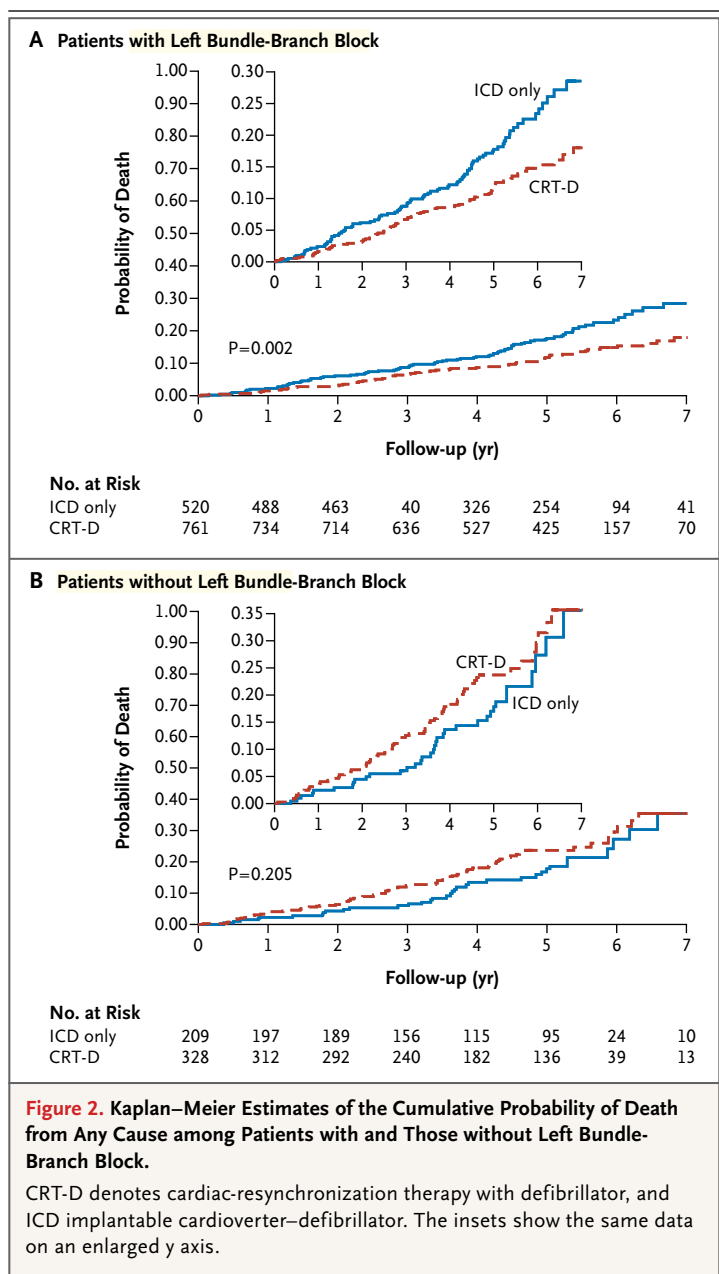
The unadjusted and adjusted hazard ratios for death from any cause and for a nonfatal heart-failure event among patients with and those without left bundle-branch block are shown in Table 2. For the primary analysis of death from any cause, the adjusted hazard ratio of 0.59 indicated that there was a 41% reduction in the long-term risk of death among patients with left bundle-branch block who were randomly assigned to CRT-D therapy, as compared with those randomly assigned to ICD therapy alone. For the secondary end point of a nonfatal heart-failure event, the adjusted hazard ratio of 0.38 indicated a reduction in risk of 62% with CRT-D (Table 2).

The effects of CRT-D therapy on mortality among patients with left bundle-branch block in seven prespecified subgroups are shown in Figure 3. The survival benefit with CRT-D was consistent in each subgroup analyzed, including patients with ischemic cardiomyopathy and those with nonischemic cardiomyopathy, men and women, and patients with a longer QRS duration (≥ 150 msec) and those with a shorter QRS duration (< 150 msec); there were no significant treatment-by-subgroup interactions. The survival benefit provided by CRT-D in patients with left bundle-branch block was independent of the QRS duration, even when the QRS duration was further categorized into quartiles (Fig. S2 in the Supplementary Appendix).

CRT-D IN PATIENTS WITHOUT LEFT BUNDLE-BRANCH BLOCK

Among patients without left bundle-branch block, Kaplan–Meier survival analysis did not show a significant difference between the two treatment groups in the cumulative probability of death from any cause during the period from enrollment through 7 years of follow-up ($P=0.21$ by the log-rank test without adjustment) (Fig. 2B). Similarly, the cumulative probability of a nonfatal heart-failure event during 7 years of follow-up did not differ significantly between the ICD-only group and the CRT-D group ($P=0.58$ by the log-rank test without adjustment) (Fig. S3 in the Supplementary Appendix).

Cox proportional-hazards regression modeling consistently showed a lack of benefit associated with CRT-D in patients without left bundle-branch block, with a trend toward an increased



risk of death observed only after multivariate adjustment (Table 2). The differential effect of CRT-D on outcomes according to QRS morphologic findings was significant for all end points ($P<0.05$ for interaction of treatment with QRS morphologic findings, in unadjusted and adjusted analyses) (Table 2). The lack of a survival benefit associated with CRT-D in patients without left bundle-branch block was consistent among those with a longer QRS duration (≥ 150 msec) or a shorter QRS duration (< 150 msec), and among

Table 2. Hazard Ratios for End Points with CRT-D versus ICD Alone, According to the Presence or Absence of Left Bundle-Branch Block.

End Point	No. of Events	No. of Patients	Left Bundle-Branch Block		Non-Left Bundle-Branch Block		P Value for Interaction*
			Hazard Ratio (95% CI)	P Value	Hazard Ratio (95% CI)	P Value	
Death from any cause							
Unadjusted analysis	292	1818	0.63 (0.47–0.84)	0.002	1.31 (0.87–1.96)	0.19	0.004
Adjusted analysis†	267	1681	0.59 (0.43–0.80)	<0.001	1.57 (1.03–2.39)	0.04	<0.001
Nonfatal heart-failure event							
Unadjusted analysis	442	1818	0.42 (0.33–0.52)	<0.001	1.10 (0.79–1.53)	0.59	<0.001
Adjusted analysis†	405	1681	0.38 (0.30–0.48)	<0.001	1.13 (0.80–1.60)	0.48	<0.001
Nonfatal heart-failure event or death							
Unadjusted analysis	577	1818	0.50 (0.41–0.61)	<0.001	1.21 (0.90–1.63)	0.21	<0.001
Adjusted analysis†	530	1681	0.45 (0.37–0.56)	<0.001	1.27 (0.94–1.73)	0.12	<0.001

* The P value for interaction represents the likelihood that the difference between the treatment effect on patients with left bundle-branch block and the treatment effect on those without left bundle-branch block occurred by chance alone.

† Models were adjusted for the following covariates: age at enrollment, serum creatinine level of 1.4 mg per deciliter (120 μ mol per liter) or more, smoking status at enrollment, presence or absence of diabetes mellitus, cause of cardiomyopathy (ischemic vs. nonischemic), left ventricular end-systolic volume at baseline indexed by body-surface area, QRS duration at baseline (≥ 150 msec vs. < 150 msec), and NYHA class III or IV more than 3 months before enrollment (yes vs. no). Covariates were identified from a best-subset regression analysis.

patients with QRS morphologic findings showing right bundle-branch block or intraventricular conduction delay (Fig. S4 in the Supplementary Appendix).

POST-TRIAL ANALYSIS

To further validate the consistency of our findings, we carried out a post-trial landmark analysis (i.e., with the follow-up time beginning after trial closure). The landmark multivariate Cox model showed similar findings: among patients with left bundle-branch block who were alive at the completion of the original trial, treatment with CRT-D was associated with a significant survival benefit during the post-trial follow-up period, as compared with ICD therapy alone (adjusted hazard ratio, 0.58; 95% confidence interval [CI], 0.39 to 0.87; $P=0.009$); however, no corresponding benefit was observed in patients without left bundle-branch block (adjusted hazard ratio, 1.31; 95% CI, 0.77 to 2.23; $P=0.32$; $P=0.02$ for interaction of treatment with QRS morphologic findings).

DISCUSSION

The findings of the present study provide evidence that early intervention with CRT-D is associated with a significant long-term survival benefit in

patients with mild heart failure who have left ventricular dysfunction and an ECG pattern showing left bundle-branch block. However, there were no beneficial effects on long-term outcomes in patients without left bundle-branch block.

Cardiac-resynchronization therapy (CRT) with or without a defibrillator is associated with reverse remodeling and has been shown to reduce heart-failure symptoms and rates of hospitalization and death among patients with NYHA class III or IV heart failure.⁴⁻⁷ MADIT-CRT and the Resynchronization Reverses Remodeling in Systolic Left Ventricular Dysfunction (REVERSE) trial have shown that the echocardiographic and clinical benefit of CRT can be extended to the prevention of heart-failure progression in asymptomatic and mildly symptomatic patients (those in NYHA class I or II) with ischemic and nonischemic cardiomyopathy.^{1,8} In these trials, the mean follow-up time was only 2 to 3 years, raising the question of whether the early benefits of CRT in this population are sustained during long-term follow-up.

The Resynchronization-Defibrillation for Ambulatory Heart Failure Trial (RAFT) showed a reduction in the rate of death from any cause among patients with mild-to-moderate heart failure who were treated with CRT-D.⁹ This study, in contrast to ours, also enrolled patients with

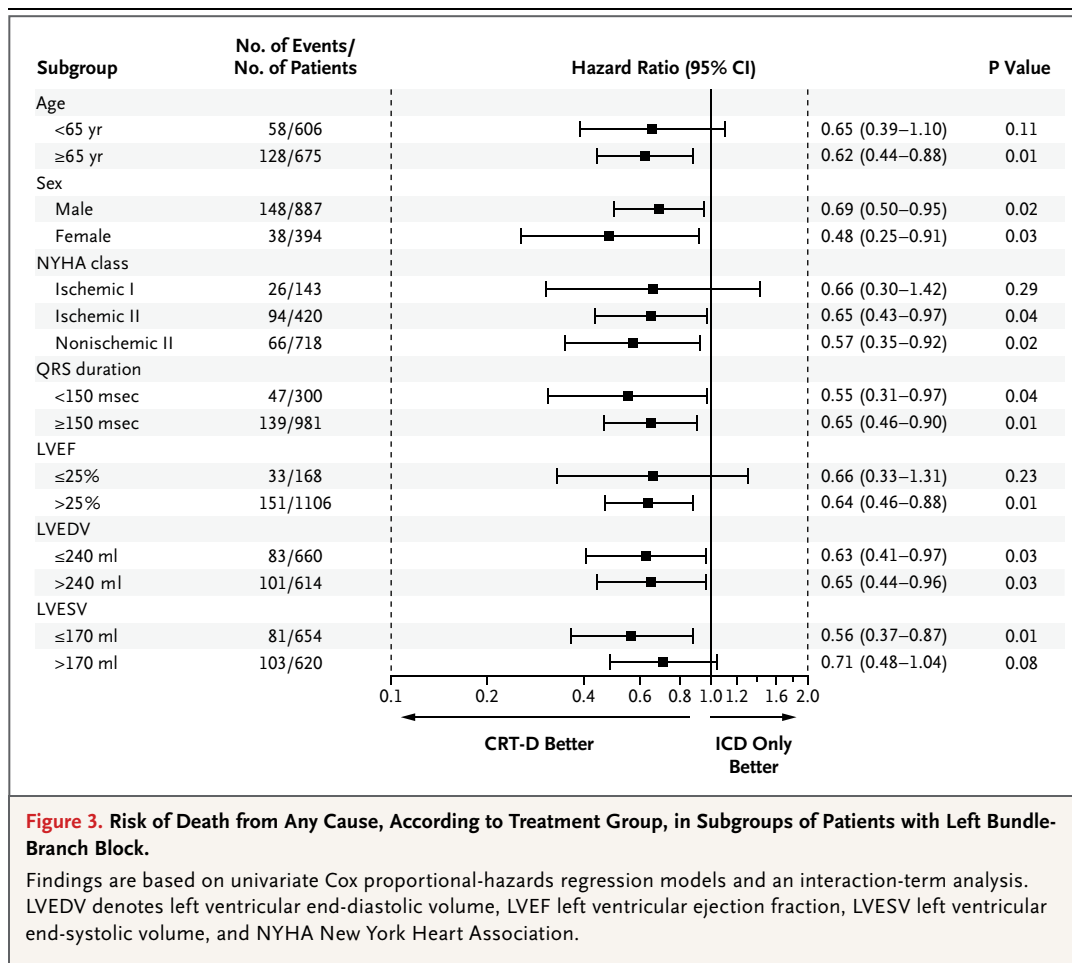


Figure 3. Risk of Death from Any Cause, According to Treatment Group, in Subgroups of Patients with Left Bundle-Branch Block.

Findings are based on univariate Cox proportional-hazards regression models and an interaction-term analysis. LVEDV denotes left ventricular end-diastolic volume, LVEF left ventricular ejection fraction, LVESV left ventricular end-systolic volume, and NYHA New York Heart Association.

symptoms of more advanced heart failure (NYHA class III). Thus, the findings of our study extend the RAFT data to patients with only mild heart-failure symptoms (NYHA class I or II) before device implantation.

Data from the in-trial phase of MADIT-CRT showed that treatment with CRT-D was associated with a pronounced reduction in the risk of both first and subsequent heart-failure events among patients with left bundle-branch block. There was no detectable effect regarding either of the two end points among patients without left bundle-branch block.^{2,10} The findings from the present study indicate that this treatment interaction was sustained during long-term follow-up. The long-term survival benefit of CRT-D in patients with left bundle-branch block was consistent in each subgroup analyzed, regardless of sex, QRS duration, and ischemic versus non-ischemic cause of cardiomyopathy.

The mechanism underlying the differential effect of CRT-D according to QRS morphologic

finding in MADIT-CRT is not clear. We previously found that the patients in MADIT-CRT who had an ECG pattern that did not show left bundle-branch block had a significantly lower rate of echocardiographic response to CRT-D and a significant increase in the risk of ventricular tachyarrhythmic events after implantation of a CRT-D device, as compared with patients who had a pattern showing left bundle-branch block.¹¹ These findings may be due to the fact that the spread of electrical activation in the left ventricular wall in patients without left bundle-branch block is more heterogeneous than in those with left bundle-branch block,^{12,13} possibly leading to a pacing-induced discrepancy of the wave front of the electrical activation, which has been shown to be associated with a poor prognosis.¹⁴ In the present study, the lack of a benefit of CRT-D in patients without left bundle-branch block was consistent, regardless of the QRS duration or presence or absence of right bundle-branch block or an intraventricular conduction

delay. Thus, at present, our data do not support early intervention with CRT-D in any subset of this population.

Our findings are limited by a possible selection bias for the patients who were enrolled in phase 2 of the extended follow-up. It should be noted, however, that nearly all the patients who were lost to follow-up after phase 1 were from the U.S. medical centers that declined to participate in the phase 2 registry, suggesting that the possibility of individual patient bias is limited. It should also be noted that all the analyses in the present study were carried out on an intention-to-treat basis, thereby minimizing the possibility of a survival bias related to crossovers that occurring during or after the in-trial period.

Data from the present study clearly indicate that CRT-D was not beneficial during long-term follow-up in patients without left bundle-branch

block who were enrolled in MADIT-CRT. However, the finding regarding a possible harmful effect of CRT-D in this population should be interpreted with caution, since it was obtained only after multivariate adjustment and is therefore sensitive to covariate selection.

In conclusion, our data from the MADIT-CRT long-term follow-up study provide evidence that treatment with CRT-D is associated with a significant long-term survival benefit in patients with mild heart failure who have a left ventricular ejection fraction of 30% or less and left bundle-branch block. However, we did not observe a clinical benefit in patients who had mild heart failure without left bundle-branch block.

Supported by unrestricted research grants from Boston Scientific to the University of Rochester School of Medicine and Dentistry and to the Israeli Association for Cardiovascular Trials.

Disclosure forms provided by the authors are available with the full text of this article at NEJM.org.

APPENDIX

From the Heart Research Follow-up Program, Division of Cardiology, Department of Medicine at the University of Rochester Medical Center, Rochester, NY (I.G., V.K., H.U.K., M.W.B., S.M., B.P., W.Z., A.J.M.); the Israeli Association for Cardiovascular Trials (I.G., A.D., R.K.), Leviev Heart Center, Sheba Medical Center (I.G., R.K.), Tel Hashomer, and Sackler School of Medicine, Tel Aviv University (I.G., S.V.) and Tel Aviv Sourasky Medical Center (S.V.), Tel Aviv — all in Israel; Cedars-Sinai Heart Institute and Hospital of the Good Samaritan, Los Angeles (D.S.C.); Department of Medicine, Duke University Medical Center, Durham, NC (J.P.D.); New England Cardiac Arrhythmia Center, Tufts Medical Center (N.A.M.E.), and Cardiovascular Division, Brigham and Women's Hospital and Harvard Medical School (M.A.P., S.D.S.) — all in Boston; Cardiology Unit, University of California at San Francisco, San Francisco (E.F.); Cardiology Unit, St. Luke's-Roosevelt Hospital, New York (H.G.); Cardiology Department, Institute for Clinical and Experimental Medicine, Prague, Czech Republic (J.K.); Kerckhoff Klinik, Bad Nauheim (M.K.), and Department of Medicine-Cardiology, University of Bonn, Bonn (A.G.) — both in Germany; Heart Center, Semmelweis University, Budapest, Hungary (B.M.); Hospital General de Valencia, Valencia, Spain (A.Q.); and the Cardiovascular Institute, Loyola University Medical Center, Chicago (D.W.).

REFERENCES

- Moss AJ, Hall WJ, Cannom DS, et al. Cardiac-resynchronization therapy for the prevention of heart-failure events. *N Engl J Med* 2009;361:1329-38.
- Zareba W, Klein H, Cygankiewicz I, et al. Effectiveness of cardiac resynchronization therapy by QRS morphology in the Multicenter Automatic Defibrillator Implantation Trial-Cardiac Resynchronization Therapy (MADIT-CRT). *Circulation* 2011;123:1061-72.
- Moss AJ, Brown MW, Cannom DS, et al. Multicenter Automatic Defibrillator Implantation Trial-Cardiac Resynchronization Therapy (MADIT-CRT): design and clinical protocol. *Ann Noninvasive Electrocardiol* 2005;10:34-43.
- Bristow MR, Saxon LA, Boehmer J, et al. Cardiac-resynchronization therapy with or without an implantable defibrillator in advanced chronic heart failure. *N Engl J Med* 2004;350:2140-50.
- Cleland JG, Daubert JC, Erdmann E, et al. The effect of cardiac resynchronization on morbidity and mortality in heart failure. *N Engl J Med* 2005;352:1539-49.
- Cleland JG, Daubert JC, Erdmann E, et al. Longer-term effects of cardiac resynchronization therapy on mortality in heart failure [the Cardiac REsynchronization-Heart Failure (CARE-HF) trial extension phase]. *Eur Heart J* 2006;27:1928-32.
- Bradley DJ, Bradley EA, Baughman KL, et al. Cardiac resynchronization and death from progressive heart failure: a meta-analysis of randomized controlled trials. *JAMA* 2003;289:730-40.
- Linde C, Abraham WT, Gold MR, St John Sutton M, Ghio S, Daubert C. Randomized trial of cardiac resynchronization in mildly symptomatic heart failure patients and in asymptomatic patients with left ventricular dysfunction and previous heart failure symptoms. *J Am Coll Cardiol* 2008;52:1834-43.
- Tang AS, Wells GA, Talajic M, et al. Cardiac-resynchronization therapy for mild-to-moderate heart failure. *N Engl J Med* 2010;363:2385-95.
- Goldenberg I, Hall WJ, Beck CA, et al. Reduction of the risk of recurring heart failure events with cardiac resynchronization therapy: MADIT-CRT (Multicenter Automatic Defibrillator Implantation Trial with Cardiac Resynchronization Therapy). *J Am Coll Cardiol* 2011;58:729-37.
- Ouellet G, Huang DT, Moss AJ, et al. Effect of cardiac resynchronization therapy on the risk of first and recurrent ventricular tachyarrhythmic events in MADIT-CRT. *J Am Coll Cardiol* 2012;60:1809-16.
- Auricchio A, Fantoni C, Regoli F, et al. Characterization of left ventricular activation in patients with heart failure and left bundle-branch block. *Circulation* 2004;109:1133-9.
- Fantoni C, Kawabata M, Massaro R, et al. Right and left ventricular activation sequence in patients with heart failure and right bundle branch block: a detailed analysis using three-dimensional non-fluoroscopic electroanatomic mapping system. *J Cardiovasc Electrophysiol* 2005;16:112-9.
- Ypenburg C, van Bommel RJ, Delgado V, et al. Optimal left ventricular lead position predicts reverse remodeling and survival after cardiac resynchronization therapy. *J Am Coll Cardiol* 2008;52:1402-9.

Copyright © 2014 Massachusetts Medical Society.