

CLINICAL REVIEW

Pulmonary hypertension: diagnosis and management

David G Kiely *consultant respiratory physician*¹, Charlie A Elliot *consultant respiratory physician*¹, Ian Sabroe *consultant respiratory physician*^{1,2}, Robin Condliffe *consultant respiratory physician*¹

¹National Pulmonary Hypertension Service (Sheffield), Pulmonary Vascular Disease Unit, Royal Hallamshire Hospital, Sheffield Teaching Hospitals NHS Foundation Trust, Sheffield S10 2JF, UK; ²Academic Unit of Respiratory Medicine, Department of Infection and Immunity, Faculty of Medicine, Dentistry and Health, Medical School, University of Sheffield, Sheffield, UK

Pulmonary hypertension was previously considered a rare untreatable condition. The past two decades have seen major changes in our understanding of the spectrum of disease affecting the pulmonary circulation. More than 30 randomised controlled trials (RCTs) of treatments have been performed, and surgery for patients with chronic thromboembolic pulmonary hypertension has been developed. Advances in imaging have enabled more detailed patient assessment, but pulmonary hypertension continues to be a life shortening condition, and there is often a delay of around two years from onset of symptoms to diagnosis.¹ This article focuses on adult pulmonary hypertension in primary and secondary care, its diagnosis, and management.

What is pulmonary hypertension and how common is it?

Pulmonary hypertension is defined at cardiac catheterisation as a mean pulmonary artery pressure of 25 mm Hg or more. The initial clinical classification in 1973 arose from a World Health Organization sponsored international meeting after an epidemic related to use of the appetite suppressant, aminorex fumarate.² It defined primary pulmonary hypertension (now termed idiopathic pulmonary arterial hypertension) as being characterised by vasculopathy of the pulmonary arteries. Better understanding of disease mechanisms led to subsequent classification of conditions with shared clinical and pathophysiological characteristics:

- Group 1: Pulmonary arterial hypertension (PAH), which can be idiopathic (IPAH) or associated with other conditions, notably systemic sclerosis and congenital heart disease
- Group 2: Pulmonary hypertension owing to left heart disease (PH-LHD)
- Group 3: Pulmonary hypertension owing to lung disease or hypoxia (PH-Lung), or both
- Group 4: Chronic thromboembolic pulmonary hypertension (CTEPH)
- Group 5: Unclear or multifactorial mechanisms (fig 1).³

Many mechanisms can lead to elevation of pulmonary pressures. In PAH, progressive narrowing of the pulmonary arterial bed results from an imbalance of vasoactive mediators, including prostacyclin, nitric oxide, and endothelin-1. This leads to an increased right ventricular afterload, right heart failure, and premature death. Between 11% and 40% of patients with IPAH and 70% of patients with a family history of PAH carry a mutation in the gene encoding bone morphogenetic receptor-2 (*BMPR2*); however, penetrance is low—carriers have a 20% lifetime risk of developing pulmonary hypertension.^{4,5} Therefore, “multiple hits” are probably needed for the development of PAH. In PH-LHD, raised left atrial pressures result in secondary elevation of pulmonary pressure. In PH-Lung, raised pulmonary arterial pressures result from mechanisms such as vascular destruction and hypoxic vasoconstriction. In CTEPH, mechanical obstruction of the pulmonary vascular bed is the primary process.

Incidences are estimated to be 1-3.3 per million per year for IPAH and 1.75-3.7 per million per year for CTEPH; the prevalence of PAH is estimated at 15-52 per million.⁶⁻¹⁰ Pulmonary hypertension is more common in severe respiratory and cardiac disease, occurring in 18-50% of patients assessed for transplantation or lung volume reduction surgery, and in 7-83% of those with diastolic heart failure.¹¹⁻¹⁴

Who gets pulmonary hypertension and why is classification important?

IPAH is rare and primary care doctors may never encounter a case. By contrast, the prevalence of PAH is high in certain patient groups, such as those with systemic sclerosis (9%), portal hypertension (2-6%), congenital heart disease (5-10%), and HIV (0.5%).¹⁵⁻²⁰ Between 0.5% and 4% of patients develop CTEPH after acute pulmonary embolism; patients at increased risk include those presenting with large, recurrent, or unprovoked clots.^{21,22} Classification is crucial in determining treatment and prognosis.⁹ Specific treatments exist for PAH and CTEPH. By contrast, in PH-LHD and PH-Lung, treatment is best directed at the underlying condition, and currently PAH

Summary points

- Pulmonary hypertension has many causes so prognoses and treatments vary
- The condition is diagnosed by systematically evaluating the breathless patient and screening patients at high risk
- Patients at high risk of severe and treatable pulmonary hypertension include those with systemic sclerosis, portal hypertension, congenital heart disease, and previous pulmonary embolism
- Specialist centres provide access to tailored investigative and treatment pathways and support networks for patients
- Patients with severe pulmonary hypertension can deteriorate rapidly—do not delay referral to perform specialist investigations
- Only selected patients with pulmonary arterial hypertension and chronic thromboembolic pulmonary hypertension benefit from interventions directed at pulmonary vasculature; for most patients treatment is aimed at the underlying condition

Sources and selection criteria

This review is based on our personal experience, personal archives of references, and a PubMed search using terms including pulmonary hypertension, chronic thromboembolic disease, and prognosis. We consulted international guidelines from the European Society of Cardiology, European Respiratory Society, and American College of Chest Physicians.

specific treatments are not recommended. Distinguishing between IPAH and PH-LHD due to diastolic dysfunction in the setting of normal left ventricular systolic function may be challenging (table 1).⁹

Median survival in untreated IPAH is 2.8 years, but more recent registries have observed overall median survival of at least five years.^{9 23} In the past, the mean age at diagnosis in IPAH was 35 years; current five year survival in this younger age group is now about 75%.¹⁰ PAH associated with systemic sclerosis carries a worse prognosis than IPAH, whereas the opposite is true for congenital heart disease.⁹ The development of pulmonary hypertension in cardiac and respiratory disease has a negative impact on prognosis, which depends on the underlying cause and severity of pulmonary hypertension.

What are the symptoms and signs of pulmonary hypertension?

PAH most commonly presents with progressive breathlessness.²⁴ As right ventricular dysfunction develops patients can experience exertional dizziness and syncope. Oedema and ascites occur late in the disease. Anginal chest pain may occur due to exertional myocardial hypoperfusion in the setting of right ventricular hypertrophy, left main coronary artery compression by the pulmonary artery, or ischaemic heart disease.²⁵ Patients are prone to tachyarrhythmias, most commonly atrial flutter, which can cause sudden decompensation.²⁶ Haemoptysis, although uncommon, can occur in Eisenmenger's syndrome and CTEPH, where bronchial arteries may be enlarged. Signs suggestive of pulmonary hypertension include a loud pulmonary second heart sound, systolic murmur of tricuspid regurgitation, raised jugular venous pressure, peripheral oedema and ascites, but these signs may be subtle or absent in early disease. Look for signs of associated conditions (such as connective tissue disease or liver disease).

When should I suspect pulmonary hypertension?

Pulmonary hypertension is diagnosed by systematically evaluating the breathless patient and screening high risk groups. Unexplained progressive exertional breathlessness in the absence of symptoms or signs of respiratory or left heart disease is suggestive. Screening protocols exist for high risk groups. Rheumatology centres screen patients with systemic sclerosis annually, and potential liver transplant recipients are routinely investigated for portopulmonary hypertension. Persistent

breathlessness after pulmonary embolism should alert the doctor to the possibility of CTEPH.

What investigations should I perform if pulmonary hypertension is suspected?

Electrocardiography, chest radiography, and pulmonary function tests may identify an alternative cause of breathlessness (fig 2). Evidence of right heart strain on electrocardiography and prominent pulmonary arteries or cardiomegaly on chest radiography were seen in 80-90% of cases in a large IPAH registry.²⁴ In clinical practice, however, a normal electrocardiograph and chest radiograph cannot exclude the diagnosis. A reduction in gas transfer (lung capacity to "transfer" an inhaled gas into the blood) and mildly deranged spirometry both occur in IPAH.²⁷ If pulmonary hypertension is still suspected, echocardiography should be performed.²⁸ Figure 3 describes the estimation and interpretation of systolic pulmonary artery pressure, together with other echocardiographic features suggesting the presence of pulmonary hypertension. Importantly, pulmonary hypertension is defined by mean pulmonary artery pressure (measured at right heart catheterisation) not systolic pulmonary artery pressure (estimated by echocardiography). In addition, systolic estimates are less accurate in respiratory disease and during intercurrent illness.¹⁴

How is pulmonary hypertension assessed in a specialist unit?

If initial investigations suggest that pulmonary hypertension is possible, further tests are needed to confirm the diagnosis and to establish cause and severity. In the United Kingdom, a network of specialist centres was commissioned in 2001 to standardise and improve care (box 1). If severe disease is suspected, do not delay referral to a specialist centre, although imaging to exclude thromboembolic disease may be considered. If the degree of pulmonary hypertension seems to be disproportionate to the underlying cardiorespiratory disease, or if diagnostic doubt exists, discussion with a specialist centre is recommended. In these groups it is also important to exclude coexisting thromboembolic disease as a cause of pulmonary hypertension. Accurate classification and assessment of disease severity (fig 2) requires integration of clinical, physiological, and radiological data. This is central to further management (fig 4).

Box 1 UK designated pulmonary hypertension centres for adults and children*Nationwide*UK national centres: www.pulmonaryhypertensioncentres.co.uk*Glasgow*Golden Jubilee Hospital: www.spvu.co.uk*Newcastle*Freeman Hospital: www.newcastle-hospitals.org.uk*Sheffield*Royal Hallamshire Hospital: www.thoracic.group.shef.ac.uk*Cambridge*Papworth Hospital: www.papworthhospital.nhs.uk*London*Royal Brompton Hospital: www.rbht.nhs.ukHammersmith Hospital: www.pulmonary-hypertension.org.ukRoyal Free Hospital: www.royalfree.nhs.ukGreat Ormond Street (children): www.gosh.nhs.uk**Blood, exercise testing, and overnight oximetry**

Immunological and HIV testing may identify a cause of pulmonary hypertension. Brain natriuretic peptide (BNP) and N-terminal-pro-BNP have prognostic importance. Lower levels at baseline and improvement during follow-up are associated with better outcomes.^{29 30} The six minute walk test has been extensively evaluated. It provides functional and prognostic information and can be used to monitor treatment response.^{31 32} Cardiopulmonary exercise testing in selected patients gives more detailed physiological and prognostic information.³³ Overnight oximetry is performed if sleep disordered breathing is a suspected cause.

Imaging

Isotope perfusion lung scanning has high sensitivity for CTEPH and a normal scan excludes the diagnosis, whereas increased renal isotope uptake may identify right to left shunts and explain hypoxaemia.^{34 35} High resolution computed tomography and computed tomography pulmonary angiography visualise the pulmonary arterial tree and provide a wealth of additional diagnostic information (fig 5). Direct features of chronic thromboembolic disease include occlusions, stenoses, and intraluminal webs (fig 1), whereas indirect signs include a mosaic perfusion pattern. These signs can be subtle and may be missed by a non-specialist radiologist. Magnetic resonance imaging provides a radiation-free method of quantitatively assessing cardiac structure and function, prognosis, and response to treatment.^{36 37} Magnetic resonance pulmonary angiography can supplement computed tomography pulmonary angiography in the assessment of CTEPH operability, and magnetic resonance perfusion imaging is as sensitive as isotope perfusion lung scanning.^{38 39} Pulmonary angiography is not commonly used in the UK to select CTEPH patients for pulmonary endarterectomy, but is used widely in other centres throughout the world to assess for surgical accessibility.

Right heart catheterisation

If non-invasive investigations support a diagnosis of pulmonary hypertension, right heart catheterisation is needed to confirm the diagnosis by directly measuring pulmonary pressure. It also allows measurement of cardiac output and estimation of left atrial pressure using pulmonary arterial wedge pressure.

Haemodynamic parameters (such as right atrial pressure, cardiac index, and pulmonary vascular resistance) and pulmonary artery saturations have important prognostic value. Raised pulmonary arterial wedge pressure is suggestive of PH-LHD. Changes in oxygen saturations between right sided cardiac chambers may suggest an intracardiac shunt. Vasoreactivity testing, usually using inhaled nitric oxide, can identify patients with IPAH who may respond to long term high dose calcium channel blockers. A positive response is defined as a reduction in mean pulmonary artery pressure of at least 10 mm Hg, to less than 40 mm Hg, without a fall in cardiac output.⁴⁰

What treatments are available for pulmonary hypertension?**Supportive treatment**

Patients with CTEPH require anticoagulants because of the central role of thromboembolic disease. Although anticoagulation is recommended in IPAH, its role in PAH associated with other conditions is less clear.^{41 42} Diuretics are often needed to treat heart failure. Digoxin and long term oxygen therapy may be considered, but there is no evidence from RCTs on their use. Annual flu vaccination is recommended.⁴³ Pregnancy is poorly tolerated despite changing practices,⁴⁴ and a recent systematic review found that maternal mortality remains high (17-33%).⁴⁵ Women are counselled about the high risks and are offered effective contraception; termination is recommended if pregnancy occurs.⁴³ Progesterone-only contraceptives—oral desogestrel, intramuscular medroxyprogesterone, and etonogestrel implants—avoid the prothrombotic effects of combined oral contraceptives. The levonorgestrel releasing coil is effective, but poor tolerance of potential vasovagal episodes mandates insertion in hospital. Emergency hormonal contraception is safe after unprotected intercourse. Non-obstetric surgical intervention also poses risks and its indication requires careful evaluation.

Specific medical treatment (table 2)**High dose calcium channel blockade**

About 10% of patients with IPAH have a positive response to vasoreactivity testing at right heart catheterisation. Observational studies suggest that half of these patients exhibit long term clinical responses to high dose calcium channel blockade (such

as diltiazem titrated to 480-720 mg/day or nifedipine titrated to 60-120 mg/day), with near normalisation of prognosis.^{46 47} No evidence exists for this treatment in other forms of PAH, and because of the potential negative inotropic effect, treatment should not be started without a positive acute vasoreactive test.

Prostanoids

Prostacyclin is a vasodilator with antiproliferative effects. Infused continuously through an indwelling central line, it was the first PAH specific drug shown to be efficacious in a small RCT, demonstrating improvements in exercise capacity, haemodynamics, and, uniquely, survival.⁴⁸ It has a half life of about six minutes, is unstable at room temperature, and intravenous administration has an associated risk of line infection. Alternative routes of administration were therefore developed. A larger RCT found that nebulised iloprost (half life about 30 minutes) improved exercise capacity and haemodynamics when given seven times a day.⁴⁹ Because of its superior stability, iloprost is also given intravenously in some centres. Treprostinil (half life about four hours) was shown, in a very large RCT, to significantly improve exercise capacity when given by continuous subcutaneous infusion.⁵⁰ Further RCTs also showed significant improvements in exercise capacity when it was given by nebulised and intravenous routes.^{51 52} Oral prostanoids have also been assessed with large RCTs, but results have generally been disappointing, and studies are ongoing.⁵³⁻⁵⁶

Endothelin receptor antagonists

Endothelin is a potent vasoconstrictor of vascular smooth muscle. Two oral endothelin receptor antagonists are currently licensed, bosentan and ambrisentan, on the basis of well conducted RCTs showing improved exercise capacity and time to clinical worsening.^{57 58} Bosentan causes reversible abnormalities in liver function tests in 5-10% of patients, so monthly monitoring is needed.⁵⁹

Phosphodiesterase-5 inhibitors

Nitric oxide acts via cyclic GMP to increase pulmonary vascular relaxation and reduce cellular proliferation and is degraded by phosphodiesterase-5. Two oral phosphodiesterase-5 inhibitors (sildenafil and tadalafil) improved exercise and functional capacity in large well conducted RCTs.^{60 61} These drugs have important interactions with nitrates, so concomitant use is contraindicated.

Treatment approach

Guidelines suggest starting oral treatment for patients with PAH in WHO functional classes II and III, and considering parenteral prostanoids in suitable patients in class IV or those with poor prognostic markers in class III (box 2).⁴³ If response to treatment is suboptimal, switching or adding further drugs is suggested.⁴³ Sequential addition of drugs to achieve predefined treatment goals in six minute walk distance, maximal oxygen capacity, and peak systolic blood pressure was associated with improved outcome compared with patients whose treatment had been escalated in a non-standardised manner.⁶² Several RCTs of combination therapy are ongoing. Assessment of the patient's ability to use complex prostanoid therapy and adherence to treatment require the support of experienced healthcare professionals.

Chronic thromboembolic pulmonary hypertension

About two thirds of patients with CTEPH are candidates for pulmonary endarterectomy. This operation offers the best prospect of substantial improvement in symptoms, haemodynamics, and long term survival, as shown by a recent UK observational study.⁸ Surgical eligibility criteria are not clearly established, and suitable candidates are identified after assessment at specialist surgical centres (Papworth Hospital in the UK). Perioperative mortality in large volume centres is now less than 5%. In inoperable cases PAH specific drugs are often used, although evidence is suboptimal. Do not delay referral for surgery for trials of medical therapy, although such treatment can be used to support patients with severe CTEPH as a "bridge" to surgery.

Other non-medical treatments

Lung transplantation (usually double lung), which has overall five year survival of around 50%, is indicated in severe PAH or inoperable CTEPH if medical management fails.⁶³ Atrial septostomy decompresses the pressure loaded heart and may be useful in patients with severe PAH who have intractable syncope but not severe hypoxaemia, or as a bridge to transplantation.⁶⁴ Supervised exercise training improves exercise capacity, but effects on haemodynamics and prognosis are unclear.⁶⁵

What challenges are on the horizon?

Despite progress in the management of PAH, it remains a life shortening condition. Understanding disease mechanisms and developing new treatments is a focus of international collaboration. Recent data have shown efficacy for drugs targeting existing pathways, such as macitentan (endothelin receptor antagonist)⁶⁶ and riociguat (nitric oxide pathway via soluble guanylate cyclase stimulation).^{67 68} Selexipag,⁶⁹ a prostacyclin receptor agonist, is also under investigation. Despite promising effects on pulmonary haemodynamics the tyrosine kinase inhibitor, imatinib, has recently been withdrawn from licensing application, partly because of safety concerns.⁷⁰ Studies with stem cell therapy are ongoing.⁷¹ The role of mechanical treatments, such as cardiac resynchronisation and right ventricular assist devices, in PAH are of interest.^{72 73} The optimal treatment of PH-LHD and PH-Lung is unclear and drugs are being studied in phase III trials. Pulmonary artery balloon angioplasty is being investigated in patients with CTEPH who are not amenable to pulmonary endarterectomy.⁷⁴ Future availability of generic oral drugs for pulmonary hypertension may lead to inappropriate prescribing in PH-LHD and PH-Lung. It may also increase late referral to specialist centres and delays in escalation of treatment.

Improved diagnostics and treatments provide increasingly complex choices for patients and healthcare professionals in this rare illness. The delivery of care through specialist centres is increasingly advocated worldwide as a cost effective way to deliver high quality care.⁴³ Education on disease trajectory, provision of psychological support, and access to social and end of life care are championed by patients and their representative organisations, and they are key to improving the quality of life for patients with pulmonary hypertension.⁷⁵

We thank Heather Allen for her help with fig 1.

Contributors: DGK, CAE, IS, and RC conceived and designed the article and approved the final manuscript. DGK is guarantor.

Box 2 WHO functional classes

Class I: Patients with pulmonary hypertension but in whom ordinary physical activity does not cause undue symptoms

Class II: Patients with pulmonary hypertension resulting in slight limitation of physical activity. They are comfortable at rest but ordinary physical activity causes undue dyspnoea or fatigue, chest pain, or near syncope

Class III: Patients with pulmonary hypertension resulting in marked limitation of physical activity. They are comfortable at rest but less than ordinary activity causes undue dyspnoea or fatigue, chest pain, or near syncope

Class IV: Patients with pulmonary hypertension who cannot carry out any physical activity without symptoms. These patients manifest signs of right heart failure. Dyspnoea or fatigue may be present at rest. Discomfort is increased by any physical activity

Tips for non-specialists

Consider pulmonary hypertension as a cause of progressive unexplained breathlessness

Echocardiography is the most useful non-invasive test for investigating pulmonary hypertension but estimates systolic, not mean, pulmonary artery pressure

Computed tomography pulmonary angiography is useful for assessing suspected pulmonary hypertension and also allows estimation of cardiac chamber size

A large left atrium suggests that pulmonary hypertension is more likely to be caused by left heart disease

Pulmonary hypertension should not be empirically treated until a clear diagnosis is established

If a patient has suspected severe pulmonary hypertension remember that the differential diagnosis is wide and outlook has improved considerably over the past 10 years

Additional educational resources*Resources for healthcare professionals*

European Society of Cardiology (www.escardio.org/guidelines)—Guidelines for the management of pulmonary hypertension

Pulmonary Hypertension Association UK (www.paheducation.co.uk)—elearning course for healthcare professionals developed to educate non-specialist healthcare professionals including general practitioners, nurses, and clinicians about pulmonary hypertension and its management

Pulmonary Hypertension Online University (www.phaonlineuniv.org)—Specialist internet resource for continuing medical education

Pulmonary Vascular Research Institute (www.pvri.info)—Independent medical research organisation devoted to increasing the awareness and knowledge of pulmonary vascular diseases and to facilitating advances in the treatment of affected people worldwide

Resources for patients

UK Pulmonary Hypertension Patients Association (www.phassociation.uk.com)—Supports adults and children with pulmonary hypertension and their families

PHA Europe (www.phaeurope.org)—Information for patients with pulmonary hypertension as well as their family and friends

UK Raynaud's and Scleroderma Association (www.raynauds.org.uk)—Supports patients with Raynaud's syndrome and scleroderma

The Sommerville Foundation (www.thesf.org.uk)—Supports young people and adults born with a heart condition (congenital)

Competing interests: All authors have completed the ICMJE uniform disclosure form at www.icmje.org/doi_disclosure.pdf (available on request from the corresponding author) and declare: no support from any organisation for the submitted work; DGK has received speaker fees, attended advisory boards, and received funding to attend meetings from Actelion, Bayer, Pfizer, United Therapeutics, Lilly, and GSK; CAE has received speaker fees and attended advisory boards for Actelion, Bayer, and GSK; IS has received travel funding from Actelion and GSK; RC has received speaker fees from Actelion and GSK and has attended advisory boards for Actelion, Bayer, and GSK. The department has received funding for research and education through unrestricted grants from Actelion, Bayer, and Pfizer.

Provenance and peer review: Commissioned; externally peer reviewed.

- Badesch DB, Raskob GE, Elliott CG, Krichman AM, Farber HW, Frost AE, et al. Pulmonary arterial hypertension: baseline characteristics from the REVEAL registry. *Chest* 2010;137:376-87.
- Hatano S, Strasser T. Primary pulmonary hypertension. Report on a WHO meeting. October 15-17, 1973, WHO, 1975.
- Simonneau G, Robbins IM, Beghetti M, Channick RN, Delcroix M, Denton CP, et al. Updated clinical classification of pulmonary hypertension. *J Am Coll Cardiol* 2009;54:S43-54.
- Thomson JR, Machado RD, Pauculo MW, Morgan NV, Humbert M, Elliott GC, et al. Sporadic primary pulmonary hypertension is associated with germline mutations of the gene encoding BMPR-II, a receptor member of the TGF-beta family. *J Med Genet* 2000;37:741-5.
- Fessel JP, Loyd JE, Austin ED. The genetics of pulmonary arterial hypertension in the post-BMPR2 era. *Pulmon Circ* 2011;1:305-19.
- Humbert M, Sitbon O, Chaouat A, Bertocchi M, Habib G, Gressin V, et al. Pulmonary arterial hypertension in France: results from a national registry. *Am J Respir Crit Care Med* 2006;173:1023-30.
- Peacock AJ, Murphy NF, McMurray JJ, Caballero L, Stewart S. An epidemiological study of pulmonary arterial hypertension. *Eur Respir J* 2007;30:104-9.
- Condliffe R, Kiely DG, Gibbs JS, Corris PA, Peacock AJ, Jenkins DP, et al. Improved outcomes in medically and surgically treated chronic thromboembolic pulmonary hypertension. *Am J Respir Crit Care Med* 2008;177:1122-7.
- Hurdman J, Condliffe R, Elliot CA, Davies C, Hill C, Wild JM, et al. ASPIRE registry: assessing the spectrum of pulmonary hypertension identified at a referral centre. *Eur Respir J* 2012;39:945-55.
- Ling Y, Johnson MK, Kiely DG, Condliffe R, Elliot CA, Gibbs JS, et al. Changing demographics, epidemiology, and survival of incident pulmonary arterial hypertension: results from the pulmonary hypertension registry of the United Kingdom and Ireland. *Am J Respir Crit Care Med* 2012;186:790-6.
- Thabut G, Dauriat G, Stern JB, Logeart D, Lévy A, Marrash-Chahla R, et al. Pulmonary hemodynamics in advanced COPD candidates for lung volume reduction surgery or lung transplantation. *Chest* 2005;127:1531-56.
- Lam CS, Roger VL, Rodeheffer RJ, Borlaug BA, Enders FT, Redfield MM, et al. Pulmonary hypertension in heart failure with preserved ejection fraction: a community-based study. *J Am Coll Cardiol* 2009;53:1119-26.
- Damy T, Goode KM, Kallvikbacka-Bennett A, Lewinter C, Hobkirk J, Nikitin NP, et al. Determinants and prognostic value of pulmonary arterial pressure in patients with chronic heart failure. *Eur Heart J* 2010;31:2280-90.
- Arcasoy SM, Christie JD, Ferrari VA, Sutton MS, Zisman DA, Blumenthal NP, et al. Echocardiographic assessment of pulmonary hypertension in patients with advanced lung disease. *Am J Respir Crit Care Med* 2003;167:735-40.
- Avouac J, Airo P, Meune C, Beretta L, Dieude P, Caramaschi P, et al. Prevalence of pulmonary hypertension in systemic sclerosis in European Caucasians and metaanalysis of 5 studies. *J Rheumatol* 2010;37:2290-8.
- Hadengue A, Benhayoun MK, Lebrec D, Benhamou JP. Pulmonary hypertension complicating portal hypertension: prevalence and relation to splanchnic hemodynamics. *Gastroenterology* 1991;100:520-8.
- Castro M, Krowka MJ, Schroeder DR, Beck KC, Plevak DJ, Rettke SR, et al. Frequency and clinical implications of increased pulmonary artery pressures in liver transplant patients. *Mayo Clin Proc* 1996;71:543-51.

- 18 Colle IO, Moreau R, Godinho E, Belghiti J, Ettori F, Cohen-Solal A, et al. Diagnosis of portopulmonary hypertension in candidates for liver transplantation: a prospective study. *Hepatology* 2003;37:401-9.
- 19 Gatzoulis MA, Alonso-Gonzalez R, Beghetti M. Pulmonary arterial hypertension in paediatric and adult patients with congenital heart disease. *Eur Respir Rev* 2009;18:154-61.
- 20 Sitbon O, Lascoux-Combe C, Delfraissy JF, Yeni PG, Raffi F, De Zuttere D, et al. Prevalence of HIV-related pulmonary arterial hypertension in the current antiretroviral therapy era. *Am J Respir Crit Care Med* 2008;177:108-3.
- 21 Klok FA, van Kralingen KW, van Dijk AP, Heyning FH, Vliegen HW, Huisman MV. Prospective cardiopulmonary screening program to detect chronic thromboembolic pulmonary hypertension in patients after acute pulmonary embolism. *Haematologica* 2010;95:970-5.
- 22 Pengo V, Lensing AW, Prins MH, Marchiori A, Davidson BL, Tiozzo F, et al. Incidence of chronic thromboembolic pulmonary hypertension after pulmonary embolism. *N Engl J Med* 2004;350:2257-64.
- 23 D'Alonzo GE, Barst RJ, Ayres SM, Bergofsky EH, Brundage BH, Detre KM, et al. Survival in patients with primary pulmonary hypertension. Results from a national prospective registry. *Ann Intern Med* 1991;115:343-9.
- 24 Rich S, Dantzker DR, Ayres SM, Bergofsky EH, Brundage BH, Detre KM, et al. Primary pulmonary hypertension. A national prospective study. *Ann Intern Med* 1987;107:216-23.
- 25 Bonderman D, Fleischmann D, Prokop M, Klepetko W, Lang IM. Images in cardiovascular medicine. Left main coronary artery compression by the pulmonary trunk in pulmonary hypertension. *Circulation* 2002;105:265.
- 26 Tongers J, Schwerdtfeger B, Klein G, Kempf T, Schaefer A, Knapp JM, et al. Incidence and clinical relevance of supraventricular tachyarrhythmias in pulmonary hypertension. *Am Heart J* 2007;153:127-32.
- 27 Sun XG, Hansen JE, Oudiz RJ, Wasserman K. Pulmonary function in primary pulmonary hypertension. *J Am Coll Cardiol* 2003;41:1028-35.
- 28 Howard LS, Grapsa J, Dawson D, Bellamy M, Chambers JB, Masani ND, et al. Echocardiographic assessment of pulmonary hypertension: standard operating procedure. *Eur Respir Rev* 2012;21:239-48.
- 29 Nagaya N, Nishikimi T, Uematsu M, Satoh T, Kyotani S, Sakamaki F, et al. Plasma brain natriuretic peptide as a prognostic indicator in patients with primary pulmonary hypertension. *Circulation* 2000;102:865-70.
- 30 Nickel N, Golpon H, Greer M, Knudsen L, Olsson K, Westerkamp V, et al. The prognostic impact of follow-up assessments in patients with idiopathic pulmonary arterial hypertension. *Eur Respir J* 2012;39:589-96.
- 31 Miyamoto S, Nagaya N, Satoh T, Kyotani S, Sakamaki F, Fujita M, et al. Clinical correlates and prognostic significance of six-minute walk test in patients with primary pulmonary hypertension. Comparison with cardiopulmonary exercise testing. *Am J Respir Crit Care Med* 2000;161:487-92.
- 32 Paciocco G, Martinez FJ, Bossone E, Pielsticker E, Gillespie B, Rubenfire M. Oxygen desaturation on the six-minute walk test and mortality in untreated primary pulmonary hypertension. *Eur Respir J* 2001;17:647-52.
- 33 Wensel R, Opitz CF, Anker SD, Winkler J, Hoffken G, Kleber FX, et al. Assessment of survival in patients with primary pulmonary hypertension: importance of cardiopulmonary exercise testing. *Circulation* 2002;106:319-24.
- 34 Worsley DF, Palevsky HI, Alavi A. Ventilation-perfusion lung scanning in the evaluation of pulmonary hypertension. *J Nucl Med* 1994;35:793-6.
- 35 Tunariu N, Gibbs SJ, Win Z, Gin-Sing W, Graham A, Gishen P, et al. Ventilation-perfusion scintigraphy is more sensitive than multidetector CTPA in detecting chronic thromboembolic pulmonary disease as a treatable cause of pulmonary hypertension. *J Nucl Med* 2007;48:680-4.
- 36 Van de Veerdonk MC, Kind T, Marcus JT, Mauritz GJ, Heymans MW, Bogaard HJ, et al. Progressive right ventricular dysfunction in patients with pulmonary arterial hypertension responding to therapy. *J Am Coll Cardiol* 2011;58:2511-9.
- 37 Swift AJ, Rajaram S, Condliffe R, Capener D, Hurdman J, Elliot CA, et al. Diagnostic accuracy of cardiovascular magnetic resonance imaging of right ventricular morphology and function in the assessment of suspected pulmonary hypertension results from the ASPIRE registry. *J Cardiovasc Magn Reson* 2012;14:40.
- 38 Rajaram S, Swift AJ, Capener D, Telfer A, Davies C, Hill C, et al. Diagnostic accuracy of contrast-enhanced MR angiography and unenhanced proton MR imaging compared with CT pulmonary angiography in chronic thromboembolic pulmonary hypertension. *Eur Radiol* 2012;22:310-7.
- 39 Rajaram S, Swift AJ, Telfer A, Hurdman J, Marshall H, Lorenz E, et al. 3D contrast-enhanced lung perfusion MRI is an effective screening tool for chronic thromboembolic pulmonary hypertension: results from the ASPIRE Registry. *Thorax* 2013; published online 24 Jan.
- 40 Barst RJ, McGoon M, Torbicki A, Sitbon O, Krowka MJ, Olschewski H, et al. Diagnosis and differential assessment of pulmonary arterial hypertension. *J Am Coll Cardiol* 2004;43:40S-7S.
- 41 Frank H, Mlczoch J, Huber K, Schuster E, Gurtner HP, Kneussl M. The effect of anticoagulant therapy in primary and anorectic drug-induced pulmonary hypertension. *Chest* 1997;112:714-21.
- 42 Johnson SR, Mehta S, Granton JT. Anticoagulation in pulmonary arterial hypertension: a qualitative systematic review. *Eur Respir J* 2006;28:999-1004.
- 43 Galie N, Hoeper MM, Humbert M, Torbicki A, Vachiery JL, Barbera JA, et al. Guidelines for the diagnosis and treatment of pulmonary hypertension. *Eur Respir J* 2009;34:1219-63.
- 44 Kiely DG, Condliffe R, Webster V, Mills GH, Wrench I, Gandhi SV, et al. Improved survival in pregnancy and pulmonary hypertension using a multiprofessional approach. *BJOG* 2010;117:565-74.
- 45 Bedard E, Dimopoulos K, Gatzoulis MA. Has there been any progress made on pregnancy outcomes among women with pulmonary arterial hypertension? *Eur Heart J* 2009;30:256-65.
- 46 Rich S, Kaufmann E, Levy PS. The effect of high doses of calcium-channel blockers on survival in primary pulmonary hypertension. *N Engl J Med* 1992;327:76-81.
- 47 Sitbon O, Humbert M, Jais X, Ios V, Hamid AM, Provencher S, et al. Long-term response to calcium channel blockers in idiopathic pulmonary arterial hypertension. *Circulation* 2005;111:3105-11.
- 48 Barst RJ, Rubin LJ, Long WA, McGoon MD, Rich S, Badesch DB, et al. A comparison of continuous intravenous epoprostenol (prostaglandin) with conventional therapy for primary pulmonary hypertension. The Primary Pulmonary Hypertension Study Group. *N Engl J Med* 1996;334:296-302.
- 49 Olschewski H, Simonneau G, Galie N, Higenbottam T, Naeije R, Rubin LJ, et al. Inhaled iloprost for severe pulmonary hypertension. *N Engl J Med* 2002;347:322-9.
- 50 Simonneau G, Barst RJ, Galie N, Naeije R, Rich S, Bourge RC, et al. Continuous subcutaneous infusion of treprostinil, a prostacyclin analogue, in patients with pulmonary arterial hypertension: a double-blind, randomized, placebo-controlled trial. *Am J Respir Crit Care Med* 2002;165:800-4.
- 51 McLaughlin VV, Benza RL, Rubin LJ, Channick RN, Voswinckel R, Tapson VF, et al. Addition of inhaled treprostinil to oral therapy for pulmonary arterial hypertension: a randomized controlled clinical trial. *J Am Coll Cardiol* 2010;55:1915-22.
- 52 Hiremath J, Thanikachalam S, Parikh K, Shanmugasundaram S, Bagera S, Shapiro L, et al. Exercise improvement and plasma biomarker changes with intravenous treprostinil therapy for pulmonary arterial hypertension: a placebo-controlled trial. *J Heart Lung Transplant* 2010;29:137-49.
- 53 Barst RJ, McGoon M, McLaughlin V, Tapson V, Rich S, Rubin L, et al. Beraprost therapy for pulmonary arterial hypertension. *J Am Coll Cardiol* 2003;41:2119-25.
- 54 Tapson VF, Torres F, Kermeen F, Keogh AM, Allen RP, Frantz RP, et al. Oral treprostinil for the treatment of pulmonary arterial hypertension in patients on background endothelin receptor antagonist and/or phosphodiesterase type 5 inhibitor therapy (the FREEDOM-C study): a randomized controlled trial. *Chest* 2012;142:1383-90.
- 55 Jing ZC, Parikh K, Pulido T, Jerez-Sanchez C, White RJ, Allen R, et al. Efficacy and safety of oral treprostinil monotherapy for the treatment of pulmonary arterial hypertension: a randomised controlled trial. *Circulation* 2013;127:624-33.
- 56 Tapson V, Jing ZC, Xu KF, Pan L, Feldman J, Kiely DG, et al. Oral treprostinil for the treatment of pulmonary arterial hypertension in patients on background endothelin receptor antagonist and/or phosphodiesterase type 5 inhibitor therapy (the FREEDOM-C2 Study): a randomized controlled trial. *Chest* 2013 [forthcoming].
- 57 Rubin LJ, Badesch DB, Barst RJ, Galie N, Black CM, Keogh A, et al. Bosentan therapy for pulmonary arterial hypertension. *N Engl J Med* 2002;346:896-903.
- 58 Galie N, Olschewski H, Oudiz RJ, Torres F, Frost A, Ghofrani HA, et al. Ambrisentan for the treatment of pulmonary arterial hypertension: results of the ambrisentan in pulmonary arterial hypertension, randomized, double-blind, placebo-controlled, multicenter, efficacy (ARIES) study 1 and 2. *Circulation* 2008;117:3010-9.
- 59 Humbert M, Segal ES, Kiely DG, Carlsen J, Schwirin B, Hoepfer MM. Results of European post-marketing surveillance of bosentan in pulmonary hypertension. *Eur Respir J* 2007;30:338-44.
- 60 Galie N, Ghofrani HA, Torbicki A, Barst RJ, Rubin LJ, Badesch D, et al. Sildenafil citrate therapy for pulmonary arterial hypertension. *N Engl J Med* 2005;353:2148-57.
- 61 Galie N, Brundage BH, Ghofrani HA, Oudiz RJ, Simonneau G, Safdar Z, et al. Tadalafil therapy for pulmonary arterial hypertension. *Circulation* 2009;119:2894-903.
- 62 Hoepfer MM, Markevych I, Spiekeroetter E, Welte T, Niedermeier J. Goal-oriented treatment and combination therapy for pulmonary arterial hypertension. *Eur Respir J* 2005;26:858-63.
- 63 Christie JD, Edwards LB, Kucheryavaya AY, Benden C, Dipchand AI, Dobbels F, et al. The registry of the International Society for Heart and Lung Transplantation: 29th adult lung and heart-lung transplant report—2012. *J Heart Lung Transplant* 2012.
- 64 Sandoval J, Gaspar J, Pena H, Santos LE, Cordova J, Del Valle K, et al. Effect of atrial septostomy on the survival of patients with severe pulmonary arterial hypertension. *Eur Respir J* 2008;31:1343-8.
- 65 Mereles D, Ehlken N, Kreusser S, Ghofrani S, Hoepfer MM, Halank M, et al. Exercise and respiratory training improve exercise capacity and quality of life in patients with severe chronic pulmonary hypertension. *Circulation* 2006;114:1482-9.
- 66 Rubin LJ, Pulido T, Channick R, Delcroix M, Galie N, Ghofrani HA, et al. Effect of macitentan on morbidity and mortality in pulmonary arterial hypertension (PAH): results from the SERAPHIN trial. *Chest* 2012;142:1026A.
- 67 Ghofrani HA, Galie N, Grimminger F, Humbert M, Keogh A, Langen D, et al. Riociguat for the treatment of pulmonary arterial hypertension: a randomized, double-blind, placebo-controlled study (PATENT-1). *Chest* 2012;142:1027.
- 68 Ghofrani HA, Grimminger F, Hoepfer M, Kim N, Mayer E, Neuser D, et al. Riociguat for the treatment of inoperable chronic thromboembolic pulmonary hypertension: a randomized, double-blind, placebo-controlled study (CHEST-1). *Chest* 2012;142:1023A.
- 69 Simonneau G, Torbicki A, Hoepfer MM, Delcroix M, Karlocai K, Galie N, et al. Selexipag, an oral, selective IP receptor agonist for the treatment of pulmonary arterial hypertension. *Eur Respir J* 2012;40:874-80.
- 70 Hoepfer MM, Barst RJ, Bourge RC, Feldman J, Frost AE, Galie N, et al. Imatinib mesylate as add-on therapy for pulmonary arterial hypertension: results of the randomized IMPRES study. *Circulation* 2013;127:1128-38.
- 71 Stewart DJ, Zhao YD, Courtman DW. Cell therapy for pulmonary hypertension: what is the true potential of endothelial progenitor cells? *Circulation* 2004;109:e172-3.
- 72 Kalogeropoulos AP, Vega JD, Smith AL, Georgiopoulos VV. Pulmonary hypertension and right ventricular function in advanced heart failure. *Congest Heart Fail* 2011;17:189-98.
- 73 Keogh AM, Mayer E, Benza RL, Corris P, Dartevelle PG, Frost AE, et al. Interventional and surgical modalities of treatment in pulmonary hypertension. *J Am Coll Cardiol* 2009;54:S67-77.
- 74 Mizoguchi H, Ogawa A, Munemasa M, Mikouchi H, Ito H, Matsubara H. Refined balloon pulmonary angioplasty for inoperable patients with chronic thromboembolic pulmonary hypertension. *Circ Cardiovasc Interv* 2012;5:748-55.
- 75 Armstrong I, Rochnia N, Harries C, Bundock S, Yorke J. The trajectory to diagnosis with pulmonary arterial hypertension: a qualitative study. *BMJ Open* 2012;2:e000806.
- 76 Guazzi M, Galie N. Pulmonary hypertension in left heart disease. *Eur Respir Rev* 2012;21:338-46.
- 77 Paulus WJ, Tschope C, Sanderson JE, Rusconi C, Flachskampf FA, Rademakers FE, et al. How to diagnose diastolic heart failure: a consensus statement on the diagnosis of heart failure with normal left ventricular ejection fraction by the heart failure and echocardiography associations of the European Society of Cardiology. *Eur Heart J* 2007;28:2539-50.

Cite this as: *BMJ* 2013;346: f2028

© BMJ Publishing Group Ltd 2013

Tables

Table 1 | Pulmonary hypertension in patients with normal left ventricular systolic function: features useful in discriminating between idiopathic pulmonary arterial hypertension and pulmonary hypertension caused by left ventricular diastolic dysfunction

Factor	Idiopathic pulmonary arterial hypertension	Diastolic dysfunction
Age	Younger	Older ⁹
Comorbidities	None	Essential hypertension, atrial fibrillation, diabetes ⁷⁶
Electrocardiography	Right axis deviation, right ventricular hypertrophy, ST depression inferiorly and anteriorly	Left axis deviation, left ventricular hypertrophy, ST depression laterally
Echocardiography		
Left atrial size	Normal	Large ⁷⁶
Mitral flow and tissue Doppler	Normal	E/E' >15 ^{*77}
Cardiac magnetic resonance imaging		
Morphology	Ventricular mass index† often raised	Ventricular mass index† often normal ³⁷
Septal position	Systolic eccentricity index‡ often raised	Systolic eccentricity index‡ often normal ³⁷
Function	Right ventricular function often moderately or severely impaired	Right ventricular function often normal or mildly impaired ³⁷
Right heart catheter:	Pulmonary arterial wedge pressure normal	Pulmonary arterial wedge pressure raised ⁴³

*Ratio of mitral peak velocity of early filling (E) to early diastolic mitral annular velocity (E'); †Ratio of right ventricular mass to left ventricular mass; ‡Ratio of maximal short axis left ventricular diameters parallel and perpendicular to interventricular septum.

Table 2| Licensed drugs for treating pulmonary hypertension

Drug	Randomised controlled trial	Administration	Important or common side effects	Important complications
Prostanoid				
Epoprostenol	Barst and colleagues ⁴⁸	Intravenous	Nausea, headache, leg pain, jaw pain, flushing, diarrhoea	Line infection
Iloprost	AIR ⁴⁹	Nebuliser; intravenous	As for eposprostenol but less severe when nebulised	Line infection with intravenous administration
Treprostinil	Simonneau and colleagues ⁵⁰	Subcutaneous	As for eposprostenol; infusion site pain for subcutaneous administration	
	TRIUMPH ⁵¹	Nebuliser; intravenous		
	TRUST ⁵²			
Endothelin receptor antagonists				
Bosentan	BREATHE-1 ⁵⁷	Oral		Abnormal liver function tests in 10% of patients; teratogenicity
Ambrisentan	ARIES-1 and 2 ⁵⁸	Oral	Peripheral oedema	
Phosphodiesterase-5 inhibitors				
Sildenafil	SUPER-1 ⁶⁰	Oral	Headache, indigestion, nasal stuffiness, blurred vision, visual colour change	Non-arteritic ischaemic optic neuropathy
Tadalafil	PHIRST ⁶¹			

Figures

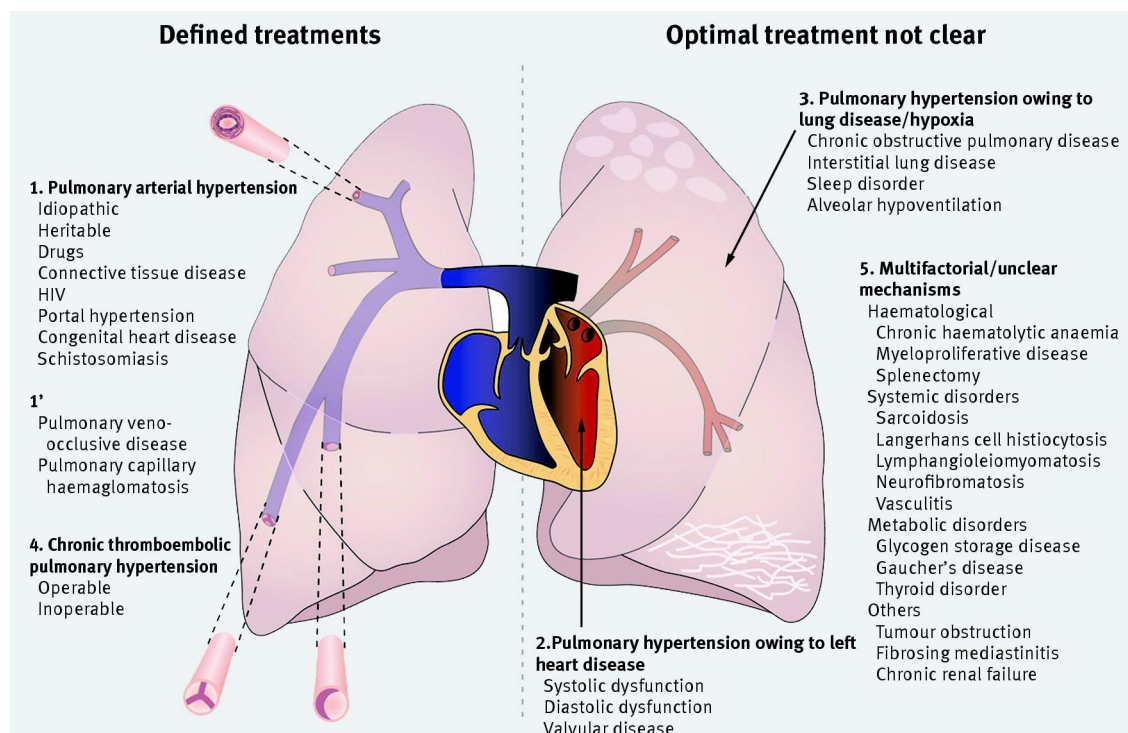


Fig 1 Classification of adult pulmonary hypertension. The condition can be caused by narrowing of the pulmonary arterial tree as a result of vasculopathy (group 1) or webs and stenoses of chronic thromboembolic disease (group 4). Optimal treatments are generally defined for groups 1 and 4. More commonly, it is associated with left heart disease (group 2) or lung disease (group 3), and optimal treatments are unclear. Several conditions associated with pulmonary hypertension have multifactorial or unclear mechanisms (group 5). *Chronic haemolytic anaemia will probably be in group 5 in next classification update

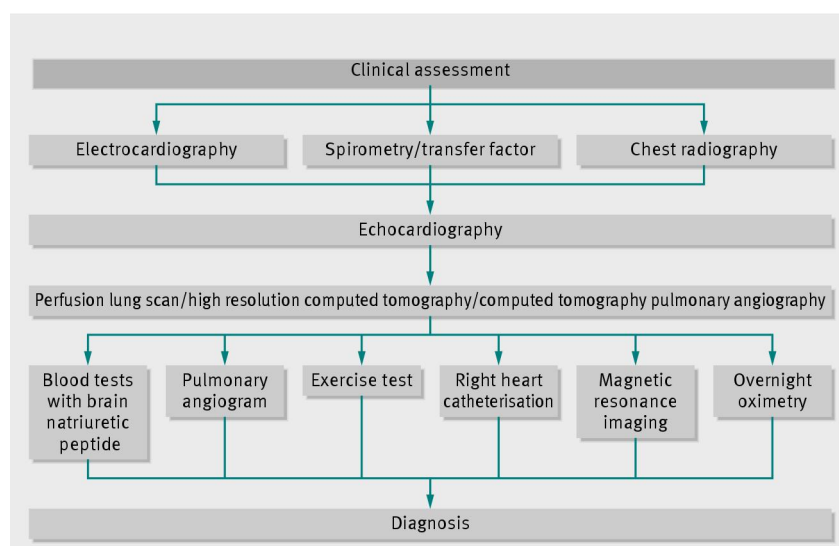
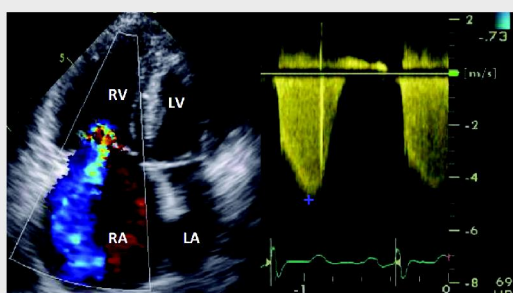


Fig 2 Diagnostic pathway for patients with suspected pulmonary hypertension



Estimation of systolic pulmonary arterial pressure (sPAP)

Maximal tricuspid regurgitant jet velocity (V) measured using continuous wave Doppler

RV systolic pressure (RVSP) calculated using equation:

$$RVSP = 4V^2$$

sPAP = RVSP + right atrial pressure (RAP)

RAP estimated at 5 mm Hg unless size of interventricular septum suggests higher

In this example sPAP = $4 \times (4.8)^2 + RAP = 92 \text{ mm Hg} + RAP$

Other features suggestive of pulmonary hypertension

Dilated right sided chambers

Reduced RV function

RV hypertrophy

Enlarged pulmonary artery

Abnormal interventricular septal motion

Likelihood of pulmonary hypertension

Pulmonary hypertension unlikely

sPAP $\leq 36 \text{ mm Hg}^*$ with no other features of pulmonary hypertension

Pulmonary hypertension possible

sPAP $\leq 36 \text{ mm Hg}^*$ + other features of pulmonary hypertension

sPAP 37-50 mm Hg*

Pulmonary hypertension likely

sPAP $> 50 \text{ mm Hg}^*$

*including 5 mm Hg RAP

Fig 3 Echocardiographic assessment of pulmonary hypertension. RA=right atrium; RV=right ventricle; LA=left atrium; LV=left ventricle

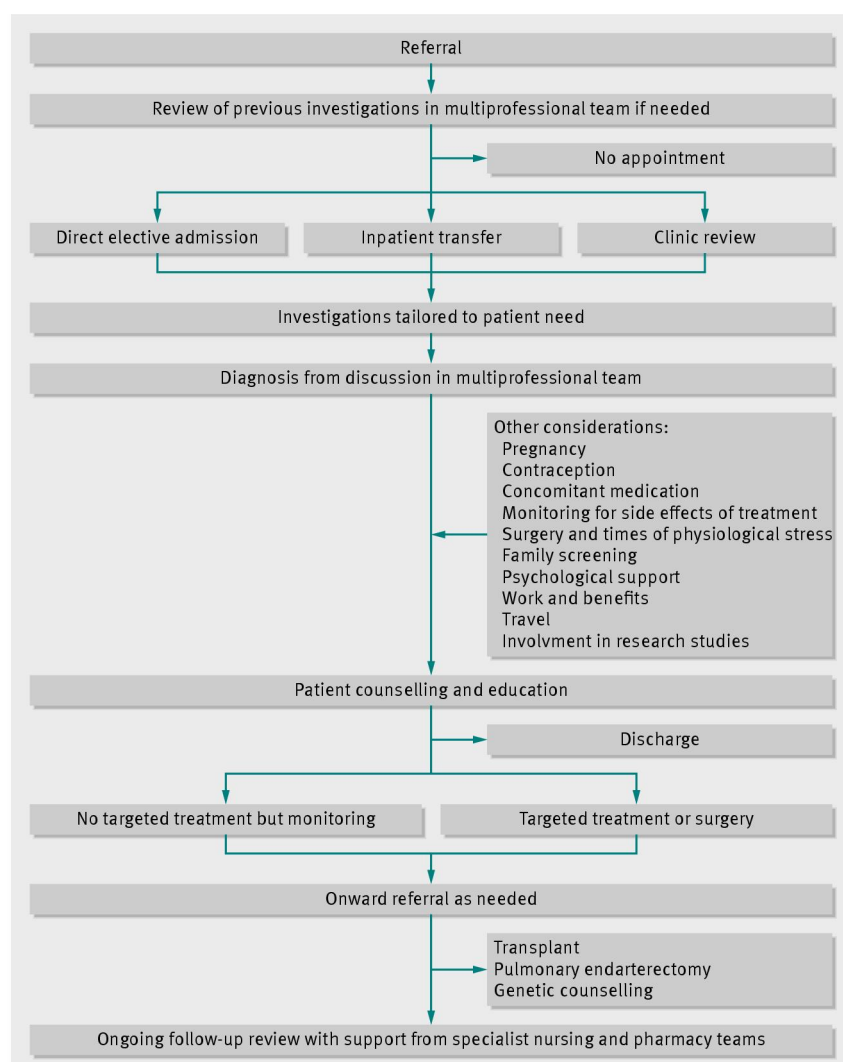
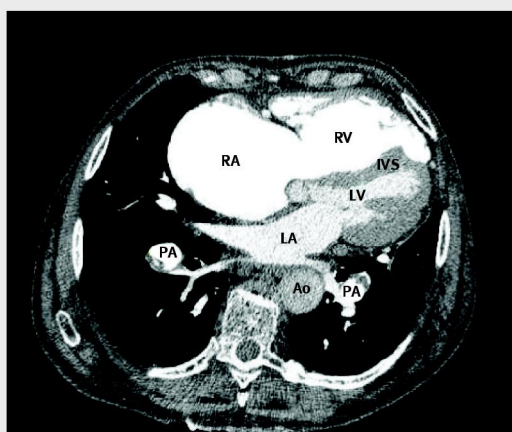


Fig 4 Overview of patient pathway at a specialist centre

**Features on this image**

Dilation of right sided chambers
 Flattening/posterior bowing of interventricular septum
 Presence of chronic thromboembolic disease in both lower lobe pulmonary arteries
 Normal sized left atrium

Other features that may be demonstrated using computed tomography pulmonary angiography

Pulmonary artery: ascending aorta >1 suggestive of pulmonary hypertension
 Right ventricular hypertrophy
 Underlying lung disease
 Dilated left atrium and normal right ventricle in pulmonary hypertension of the left heart
 Mosaic parenchymal perfusion in CTEPH
 Congenital heart disease
 Anomalous pulmonary venous drainage
 Patent ductus arteriosus
 Bronchial artery hypertrophy in Eisenmenger's syndrome and CTEPH
 Dilated oesophagus in systemic sclerosis
 Splenomegaly in porto-pulmonary hypertension

Fig 5 Computed tomography assessment of pulmonary hypertension. RA=right atrium; RV=right ventricle; LA=left atrium; LV=left ventricle; IVS, interventricular septum; PA, pulmonary artery; Ao, aorta; CTEPH=chronic thromboembolic pulmonary hypertension