

Multiple Myeloma: Diagnosis and Treatment



S. Vincent Rajkumar, MD, and Shaji Kumar, MD

CME Activity

Target Audience: The target audience for *Mayo Clinic Proceedings* is primarily internal medicine physicians and other clinicians who wish to advance their current knowledge of clinical medicine and who wish to stay abreast of advances in medical research.

Statement of Need: General internists and primary care physicians must maintain an extensive knowledge base on a wide variety of topics covering all body systems as well as common and uncommon disorders. *Mayo Clinic Proceedings* aims to leverage the expertise of its authors to help physicians understand best practices in diagnosis and management of conditions encountered in the clinical setting.

Accreditation: Mayo Clinic College of Medicine is accredited by the Accreditation Council for Continuing Medical Education to provide continuing medical education for physicians.

Credit Statement: Mayo Clinic College of Medicine designates this journal-based CME activity for a maximum of 1.0 AMA PRA Category 1 Credit(s).TM Physicians should claim only the credit commensurate with the extent of their participation in the activity.

Learning Objectives: On completion of this article, you should be able to (1) list the criteria for diagnosis of multiple myeloma and related disorders; (2) identify high-risk prognostic markers for multiple myeloma and smoldering multiple myeloma; and (3) summarize the approach to treatment of multiple myeloma.

Disclosures: As a provider accredited by ACCME, Mayo Clinic College of Medicine (Mayo School of Continuous Professional Development) must ensure balance, independence, objectivity, and scientific rigor in its educational activities. Course Director(s), Planning Committee members, Faculty, and all others who are in a position to control the content of this educational activity are required to disclose all relevant financial relationships with any commercial interest related to the subject matter of the educational activity. Safeguards

against commercial bias have been put in place. Faculty also will disclose any off-label and/or investigational use of pharmaceuticals or instruments discussed in their presentation. Disclosure of this information will be published in course materials so that those participants in the activity may formulate their own judgments regarding the presentation.

In their editorial and administrative roles, William L. Lanier, Jr, MD, Terry L. Jopke, Kimberly D. Sankey, and Nicki M. Smith, MPA, have control of the content of this program but have no relevant financial relationship(s) with industry.

Dr Rajkumar reports no competing interests. Dr Kumar has received research support for clinical trials from Celgene Corporation, Millennium Pharmaceuticals, Inc, Novartis Pharmaceuticals Corporation, Janssen Pharmaceuticals, Inc, and Sanofi.

Method of Participation: In order to claim credit, participants must complete the following:

1. Read the activity.
2. Complete the online CME Test and Evaluation. Participants must achieve a score of 80% on the CME Test. One retake is allowed.

Visit www.mayoclinicproceedings.org, select CME, and then select CME articles to locate this article online to access the online process. On successful completion of the online test and evaluation, you can instantly download and print your certificate of credit.

Estimated Time: The estimated time to complete each article is approximately 1 hour.

Hardware/Software: PC or MAC with Internet access.

Date of Release: 1/1/2016

Expiration Date: 12/31/2017 (Credit can no longer be offered after it has passed the expiration date.)

Privacy Policy: <http://www.mayoclinic.org/global/privacy.html>

Questions? Contact dietsupport@mayo.edu.



From the Division of Hematology, Mayo Clinic, Rochester, MN.

Abstract

The diagnosis and treatment of multiple myeloma has changed dramatically in the past decade. The disease definition has been updated to include highly specific biomarkers in addition to established markers of end-organ damage. The staging system has been revised to combine both measures of tumor burden and disease biology. Advances in therapy have resulted in a marked improvement in overall survival. New drugs introduced in the past few years include carfilzomib, pomalidomide, panobinostat, ixazomib, elotuzumab, and daratumumab. In this review, we outline the current approach to the diagnosis, prognosis, and management of multiple myeloma.

© 2016 Mayo Foundation for Medical Education and Research ■ Mayo Clin Proc. 2016;91(1):101-119

Multiple myeloma (MM) is a clonal plasma cell malignant neoplasm that accounts for approximately 10% of hematologic malignant disorders.^{1,2} The annual incidence, age-adjusted to the 2000 US population, is 4.3 per 100,000, resulting in over 20,000 new patients in the United States each year.³ Multiple myeloma is twice as common in blacks compared with whites, and this racial disparity is related to the higher prevalence of monoclonal gammopathy of undetermined significance (MGUS) in blacks.^{4,5} There is a slight male predominance. The median age at onset

is 66 years, and only 2% of patients are younger than 40 years of age at diagnosis.⁶

Multiple myeloma evolves from a premalignant condition clinically recognized as MGUS.⁷ Monoclonal gammopathy of undetermined significance is present in 3% to 4% of the general population older than 50 years.^{8,9} Because MGUS is mostly asymptomatic and detected often as an incidental laboratory finding, only 10% of patients with newly diagnosed MM have a history of preexisting MGUS. However, studies have found that MGUS almost always precedes MM and is associated with a risk of

progression to MM of approximately 1% per year.^{7,10} Smoldering MM (SMM) is an intermediate stage between MGUS and MM and is associated with a higher risk of progression of approximately 10% per year.¹¹

Until 2000, the mainstay of therapy for MM was use of alkylators and corticosteroids¹² and in selected patients, high-dose chemotherapy with autologous stem cell transplant (ASCT).^{13,14} Subsequently, thalidomide,¹⁵ bortezomib,¹⁶ and lenalidomide¹⁷ emerged as effective agents and greatly improved clinical outcome.^{18,19} More recently, carfilzomib, pomalidomide, panobinostat, daratumumab, ixazomib, and elotuzumab have been approved in the United States for the treatment of MM, substantially expanding the number of treatment regimens available for patients in all stages of the disease.

DIAGNOSIS

The most common presenting symptoms of MM are fatigue and bone pain.⁶ Anemia occurs in approximately 75% of patients and contributes to fatigue. Osteolytic skeletal lesions can be detected in approximately 80% of patients. Other common findings at presentation include hypercalcemia (15%) and elevated serum creatinine level (≥ 2 mg/dL) (20%).⁶ Approximately 1% to 2% of patients with MM have extramedullary disease (EMD) at the time of initial diagnosis, and 8% have development of EMD later in the disease course.²⁰

A monoclonal (M) protein in the serum or urine is a cardinal feature of MM but is seen in only 82% of patients on serum protein electrophoresis.⁶ The sensitivity increases to 93% when serum immunofixation is added and to 97% with the addition of either the serum free light chain (FLC) assay or 24-hour urine studies.²¹ Thus, if MM is suspected, the recommended screening strategy is serum protein electrophoresis, serum immunofixation, and either a serum FLC assay or 24-hour urinary protein electrophoresis with immunofixation. The M protein type is IgG in approximately 50%, IgA in 20%, immunoglobulin light chain only in 20%, IgD in 2%, and IgM in 0.5%.⁶ About 2% to 3% of MM has no detectable M protein and is referred to as nonsecretory MM.²²

The baseline diagnostic work-up required for the diagnosis of MM includes a complete blood cell count, measurement of serum calcium and

creatinine levels, serum and urinary protein electrophoresis with immunofixation, serum FLC assay, and bone marrow examination. In addition, low-dose whole-body computed tomography or [^{18}F]-fluorodeoxyglucose–positron emission tomography/computed tomography or, at minimum, plain radiography of the entire skeleton are required to detect osteolytic bone lesions.²³ The osteolytic bone lesions in MM exhibit no new bone formation, and nuclear medicine bone scans are therefore not helpful.²⁴ Magnetic resonance imaging of the whole body or spine/pelvis is needed in patients with suspected SMM and whenever the diagnosis of MM is in doubt to look for focal bone marrow lesions.²⁵ Magnetic resonance imaging is also often needed in patients with osteolytic bone disease involving the spine to rule out cord compression and to determine the need for interventional procedures such as vertebroplasty or kyphoplasty.

DISEASE DEFINITION

In 2014, the International Myeloma Working Group updated the diagnostic criteria for MM and related disorders (Table 1).¹ The main revision was to add 3 highly specific biomarkers (clonal bone marrow plasma cells $\geq 60\%$, serum FLC ratio ≥ 100 , and >1 focal lesion on magnetic resonance imaging) to existing markers of end-organ damage (hypercalcemia, renal insufficiency, anemia, or bone lesions) that were used to diagnose the disease. The updated criteria represent a paradigm shift because they allow early diagnosis and initiation of therapy before end-organ damage. As shown on Table 1, the diagnosis of MM requires 10% or more plasma cells on bone marrow examination or a biopsy-proven plasmacytoma plus one or more myeloma-defining events. The major differential diagnosis of MM includes MGUS, SMM, immunoglobulin light chain amyloidosis, and solitary plasmacytoma.

MOLECULAR CLASSIFICATION

Although MM is still considered a single disease, it is in reality a collection of several different cytogenetically distinct plasma cell malignant neoplasms (Table 2).^{26,27} On fluorescence in situ hybridization studies of the bone marrow, approximately 40% of MM cases are characterized by the presence of trisomies in the neoplastic plasma cells (trisomic MM), while most of the

TABLE 1. International Myeloma Working Group Diagnostic Criteria for Multiple Myeloma and Related Plasma Cell Disorders

Disorder	Disease definition
Non-IgM monoclonal gammopathy of undetermined significance (MGUS)	<p>All 3 criteria must be met:</p> <ul style="list-style-type: none"> • Serum monoclonal protein (non-IgM type) <3 g/dL • Clonal bone marrow plasma cells <10%^a • Absence of end-organ damage such as hypercalcemia, renal insufficiency, anemia, and bone lesions (CRAB) that can be attributed to the plasma cell proliferative disorder
Smoldering multiple myeloma	<p>Both criteria must be met:</p> <ul style="list-style-type: none"> • Serum monoclonal protein (IgG or IgA) ≥3 g/dL, or urinary monoclonal protein ≥500 mg/24 h and/or clonal bone marrow plasma cells 10%-60% • Absence of myeloma defining events or amyloidosis
Multiple myeloma	<p>Both criteria must be met:</p> <ul style="list-style-type: none"> • Clonal bone marrow plasma cells ≥10% or biopsy-proven bony or extramedullary plasmacytoma • Any one or more of the following myeloma defining events: <ul style="list-style-type: none"> ○ Evidence of end-organ damage that can be attributed to the underlying plasma cell proliferative disorder, specifically: <ul style="list-style-type: none"> ■ Hypercalcemia: serum calcium >0.25 mmol/L (>1 mg/dL) higher than the upper limit of normal or >2.75 mmol/L (>11 mg/dL) ■ Renal insufficiency: creatinine clearance <40 mL/min or serum creatinine >177 μmol/L (>2 mg/dL) ■ Anemia: hemoglobin value of >2 g/dL below the lower limit of normal, or a hemoglobin value <10 g/dL ■ Bone lesions: one or more osteolytic lesions on skeletal radiography, computed tomography (CT), or positron emission tomography-CT (PET-CT) ○ Clonal bone marrow plasma cell percentage ≥60% ○ Involved: uninvolved serum free light chain (FLC) ratio ≥100 (involved FLC level must be ≥100 mg/L) ○ >1 Focal lesion on magnetic resonance imaging (MRI) studies (at least 5 mm in size)
IgM monoclonal gammopathy of undetermined significance (IgM MGUS)	<p>All 3 criteria must be met:</p> <ul style="list-style-type: none"> • Serum IgM monoclonal protein <3 g/dL • Bone marrow lymphoplasmacytic infiltration <10% • No evidence of anemia, constitutional symptoms, hyperviscosity, lymphadenopathy, or hepatosplenomegaly that can be attributed to the underlying lymphoproliferative disorder
Light chain MGUS	<p>All criteria must be met:</p> <ul style="list-style-type: none"> • Abnormal FLC ratio (<0.26 or >1.65) • Increased level of the appropriate involved light chain (increased κ FLC in patients with ratio >1.65 and increased λ FLC in patients with ratio <0.26) • No immunoglobulin heavy chain expression on immunofixation • Absence of end-organ damage that can be attributed to the plasma cell proliferative disorder • Clonal bone marrow plasma cells <10% • Urinary monoclonal protein <500 mg/24 h
Solitary plasmacytoma	<p>All 4 criteria must be met:</p> <ul style="list-style-type: none"> • Biopsy-proven solitary lesion of bone or soft tissue with evidence of clonal plasma cells • Normal bone marrow with no evidence of clonal plasma cells • Normal skeletal survey and MRI (or CT) of spine and pelvis (except for the primary solitary lesion) • Absence of end-organ damage such as hypercalcemia, renal insufficiency, anemia, or bone lesions (CRAB) that can be attributed to a lympho-plasma cell proliferative disorder
Solitary plasmacytoma with minimal marrow involvement ^b	<p>All 4 criteria must be met:</p> <ul style="list-style-type: none"> • Biopsy-proven solitary lesion of bone or soft tissue with evidence of clonal plasma cells • Clonal bone marrow plasma cells <10% • Normal skeletal survey and MRI (or CT) of spine and pelvis (except for the primary solitary lesion) • Absence of end-organ damage such as hypercalcemia, renal insufficiency, anemia, or bone lesions (CRAB) that can be attributed to a lympho-plasma cell proliferative disorder

^aA bone marrow biopsy can be deferred in patients with low-risk MGUS (IgG type, M protein <15 g/L, normal FLC ratio) in whom there are no clinical features concerning for myeloma.

^bSolitary plasmacytoma with 10% or more clonal plasma cells is considered as multiple myeloma.

From *Lancet Oncol*.¹

TABLE 2. Primary Molecular Cytogenetic Classification of Multiple Myeloma

Subtype	Gene(s)/chromosomes affected ^a	Percentage of myeloma patients
Trisomic multiple myeloma	Trisomies of one or more odd-numbered chromosomes	42
IgH translocated multiple myeloma		30
t(11;14) (q13;q32)	CCND1 (cyclin D1)	15
t(4;14) (p16;q32)	FGFR3 and MMSET	6
t(14;16) (q32;q23)	C-MAF	4
t(14;20) (q32;q11)	MAFB	<1
Other IgH translocations ^a	CCND3 (cyclin D3) in t(6;14) multiple myeloma	5
Combined IgH translocated/trisomic multiple myeloma	Trisomies plus any one IgH translocation	15
Isolated monosomy 14		4.5
Other cytogenetic abnormalities in absence of IgH translocations or trisomy or monosomy 14		5.5
Normal		3

^aIncludes the t(6;14)(p21;q32) translocation and, rarely, other IgH translocations involving uncommon partner chromosomes.

Adapted from *Blood*.²⁶

rest have a translocation involving the immunoglobulin heavy chain (IgH) locus on chromosome 14q32 (IgH translocated MM).²⁸⁻³¹ A small proportion of patients have both trisomies and IgH translocations. Trisomies and IgH translocations are considered primary cytogenetic abnormalities and occur at the time of establishment of MGUS. In addition, other cytogenetic changes termed *secondary cytogenetic abnormalities* arise along the disease course of MM, including gain(1q), del(1p), del(17p), del(13), RAS (for expansion of gene symbols, see www.geneames.org) mutations, and secondary translocations involving MYC. Both primary and secondary cytogenetic abnormalities can influence disease course, response to therapy, and prognosis (Table 3).²⁷

PROGNOSIS AND RISK STRATIFICATION

Although **median survival in patients with MM is approximately 5 to 7 years**, there is **major variation** in survival depending on **host factors**, tumor burden (**stage**), **biology** (cytogenetic abnormalities), and **response to therapy**.³² Tumor burden in MM has traditionally been assessed using the Durie-Salmon staging system³³ and the International Staging System (ISS).^{34,35} Disease biology

is best reflected on the basis of the **molecular subtype of MM** and the presence or absence of secondary cytogenetic abnormalities (Table 4).^{26,36} The revised ISS combines elements of tumor burden (ISS) and disease biology (presence of high-risk cytogenetic abnormalities or elevated lactate dehydrogenase level) to create a **unified prognostic index** that helps in clinical care as well as in comparison of clinical trial data (Table 5).³⁷

Importantly, to ensure uniform availability, only 3 widely available cytogenetic markers are used in the revised ISS; the Mayo Stratification for Myeloma and Risk-Adapted Therapy (Table 4) has additional detail that is valuable in formulating a therapeutic strategy.³⁸ Ideally, to complete accurate molecular classification and risk stratification, we recommend fluorescence in situ hybridization probes to detect trisomies, IgH translocations, MYC translocations, and abnormalities of chromosomes 1, 13, and 17.²⁷

TREATMENT

The approach to treatment of newly diagnosed MM is outlined in the Figure. The most important phases of therapy are initial therapy, **stem cell transplant** (if eligible), consolidation/**maintenance** therapy, and treatment of **relapse**. Transplant-eligible patients typically receive approximately 4 cycles of initial therapy followed by stem cell collection and ASCT. Selected patients with standard-risk MM who respond well to induction can opt for delayed ASCT; in this strategy, stem cells are collected after 4 cycles of initial therapy and cryopreserved for future use (Figure). Transplant-ineligible patients are usually treated for 12 to 18 months. Following initial therapy and/or ASCT, consideration should be given to consolidation/maintenance therapy. The choice of maintenance and duration of therapy is often driven by the presence or absence of high-risk cytogenetic features.

Tables 6 and 7 list the major drugs used in the treatment of MM. The most common treatment regimens used in MM are listed in Table 8.³⁹⁻⁵⁹ Results of recent randomized trials using new active agents for MM are provided in Table 9.⁶⁰⁻⁶³

Initial Therapy

Initial therapy for MM varies across countries depending on drug availability. The most

TABLE 3. Cytogenetic Abnormalities on Clinical Course and Prognosis in Multiple Myeloma

Cytogenetic abnormality	Clinical setting in which abnormality is detected	
	Smoldering multiple myeloma	Multiple myeloma
Trisomies	Intermediate risk of progression, median TTP of 3 years	Good prognosis, standard-risk MM, median OS 7-10 years Most have myeloma bone disease at diagnosis Excellent response to lenalidomide-based therapy
t(11;14) (q13;q32)	Standard risk of progression, median TTP of 5 years	Good prognosis, standard-risk MM, median OS 7-10 years
t(6;14) (p21;q32)	Standard risk of progression, median TTP of 5 years	Good prognosis, standard-risk MM, median OS 7-10 years
t(4;14) (p16;q32)	High risk of progression, median TTP of 2 years	Intermediate-risk MM, median OS 5 years Needs bortezomib-based initial therapy, early ASCT (if eligible), followed by bortezomib-based consolidation/maintenance
t(14;16) (q32;q23)	Standard risk of progression, median TTP of 5 years	High-risk MM, median OS 3 years Associated with high levels of FLC and 25% present with acute renal failure as initial MDE
t(14;20) (q32;q11)	Standard risk of progression, median TTP of 5 years	High-risk MM, median OS 3 years
gain(1q21)	High risk of progression, median TTP of 2 years	Intermediate-risk MM, median OS 5 years
del(17p)	High risk of progression, median TTP of 2 years	High-risk MM, median OS 3 years
Trisomies plus any one of the IgH translocations	Standard risk of progression, median TTP of 5 years	May ameliorate adverse prognosis conferred by high-risk IgH translocations and del(17p)
Isolated monosomy 13, or isolated monosomy 14	Standard risk of progression, median TTP of 5 years	Effect on prognosis is not clear
Normal	Low risk of progression, median TTP of 7-10 years	Good prognosis, probably reflecting low tumor burden, median OS >7-10 years

ASCT = autologous stem cell transplant; FLC = free light chain; MDE = myeloma-defining event; MM = multiple myeloma; OS = overall survival; TTP = time to progression.
From *Blood Cancer J.*²⁷

common regimens used in the treatment of newly diagnosed MM are **lenalidomide** plus **dexamethasone** (Rd), **bortezomib**, **lenalidomide**, and **dexamethasone** (VRD), **bortezomib**, **thalidomide**, and **dexamethasone** (VTD), and **bortezomib**, **cyclophosphamide**, and **dexamethasone** (VCD). In a recent randomized trial conducted by the Southwest Oncology Group, progression-free survival (PFS) and overall survival (OS) were significantly superior with VRD compared with Rd (Table 9).⁶¹ Other studies have reported superior response rates and PFS with VTD compared with other doublet regimens.^{49,64}

A recent randomized trial also found that the triplet regimen of VTD, which contains a **proteasome inhibitor** (**bortezomib**) and an **immunomodulatory agent** (**thalidomide**), is superior to VCD (Table 9).⁶² On the basis of these data, **VRD** or **VTD** are the preferred regimens for initial therapy in transplant-eligible patients and in fit transplant-ineligible patients (Figure).

The **low-dose dexamethasone** regimen (**40 mg once a week**) is preferred in all regimens (Rd, VRD, VTD, VCD, etc) to minimize toxicity. In a randomized trial conducted by the Eastern Cooperative Oncology Group, the low-dose

TABLE 4. Mayo Clinic Risk Stratification for Multiple Myeloma

Risk group	Percentage of newly diagnosed patients with the abnormality
Standard risk Trisomies t(11;14) t(6;14)	75
Intermediate risk t(4;14) gain(1q)	10
High risk t(14;16) t(14;20) del(17p)	15

Adapted from *Am J Hematol*.²

dexamethasone approach was associated with superior OS and significantly lower toxicity.⁴² Similarly, the **once-weekly subcutaneous schedule of bortezomib** is preferred in all regimens. Studies have revealed that the neurotoxicity of bortezomib can be greatly diminished by administering bortezomib once a week instead of twice weekly^{47,48} and by administering the drug subcutaneously instead of intravenously.⁶⁵ The regimens listed in **Table 8** reflect these recommendations to lower the dose of dexamethasone and bortezomib from what was used in many of the initial trials. **Higher doses of dexamethasone**

and **twice-weekly bortezomib** can be considered if a **rapid response is desired**, as in the case of patients with **acute renal failure due to cast nephropathy, extensive EMD, plasma cell leukemia, or impending cord compression**.²

Frail, Elderly Patients. Patients who are 75 years of age or older or are **frail** may **not tolerate a triplet regimen**.⁶⁶ In these patients, Rd is a reasonable choice for initial therapy, especially for standard-risk patients. In a large randomized trial, Rd was found to be superior to melphalan, prednisone, and thalidomide (**Table 9**).⁶⁷ The use of melphalan-containing regimens such as melphalan, prednisone, and thalidomide and bortezomib, melphalan, and prednisone has decreased considerably, and they are recommended only if other regimens are not available. If Rd is chosen, data indicate that it should be administered until progression.⁶⁷ This may not be feasible in many countries or in patients with limited insurance or financial means. In these circumstances, a limited duration (12-18 months) of a triplet therapy such as VCD can be a reasonable option; in our opinion, VCD is a better tolerated, more predictable alternative to bortezomib, melphalan, and prednisone.

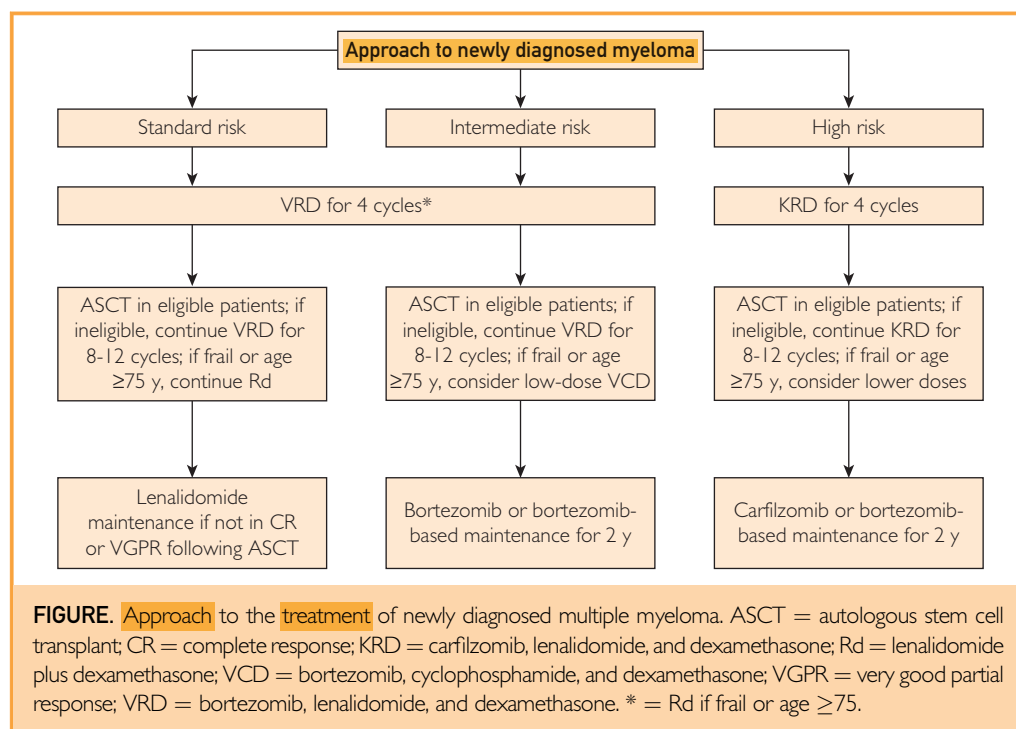
High-Risk Myeloma. The triplet regimen of carfilzomib, lenalidomide, and dexamethasone (KRD) has had high activity in phase 2 trials, with stringent complete response rates and minimal residual disease (MRD)—negative rates that appear superior to historical results with VRD.⁶⁸ However, these are non-randomized comparisons, and there are concerns about cardiac toxicity in a small proportion of patients with carfilzomib. Further, KRD is more cumbersome and expensive compared with VRD. Thus, we recommend the use of KRD at this point only to patients with high-risk MM in whom it may be reasonable to administer a regimen with the highest possible complete response rates and based on data from a relapsed MM trial that suggest a possible advantage of carfilzomib over bortezomib.⁶⁹

Acute Renal Failure Due to Cast Nephropathy. The **diagnosis of light chain cast nephropathy** can be made presumptively if the **circulating FLC levels are high** in the presence of **MM and acute renal**

TABLE 5. Revised International Staging System for Myeloma

Stage	Frequency (% of patients)	5-Year survival rate (%)
Stage I • ISS stage I (serum albumin >3.5 g/dL, serum β_2 -microglobulin <3.5 mg/L) and • No high-risk cytogenetics • Normal lactate dehydrogenase	28	82
Stage II • Neither stage I or III	62	62
Stage III • ISS stage III (serum β_2 -microglobulin >5.5 mg/L) and • High-risk cytogenetics [t(4;14), t(14;16), or del(17p)] or elevated lactate dehydrogenase	10	40

From *J Clin Oncol*.³⁷



failure.¹ However, a renal biopsy is required if serum FLC levels are below 500 mg/L. Patients presenting with acute renal failure due to light chain cast nephropathy need urgent treatment to lower circulating FLC levels.⁷⁰ We recommend a triplet regimen that does not require major dose adjustment such as VCD or VTD.⁷¹ The role of plasmapheresis to remove circulating light chains is controversial, and randomized trials indicate a lack of benefit.⁷² However, the trials so far have had some limitations, and the risk of the intervention is minimal compared with the major impact on prognosis that occurs if renal dysfunction is not reversed.⁷³ Therefore, we recommend plasmapheresis or dialysis using high-cutoff filters to rapidly reduce FLCs. Close monitoring of serum FLC and creatinine levels is needed for the first few weeks.

Autologous Stem Cell Transplant

Autologous stem cell transplant improves complete response rates and prolongs median OS in MM by approximately 12 months.^{13,14,74,75} The treatment-related mortality (TRM) rate is 1% to 2%, and the procedure can be performed entirely on an outpatient basis in more than 50% of patients.⁷⁶ Eligibility for ASCT is based

on age, performance status, and comorbidities. In the United States, the upper age limit is flexible, and patients can undergo transplant up to age 75 years if they have good functional status and minimal comorbidities. In contrast, in many other countries, the upper limit for ASCT is 65 years. The preferred conditioning regimen is melphalan (200 mg/m²).⁷⁷ Studies are ongoing to determine if the conditioning regimen can be improved with the addition of bortezomib or carfilzomib.

Timing of ASCT. Four randomized trials found that survival is similar whether ASCT is done early (immediately following 4 cycles of induction therapy) or delayed (at the time of relapse as salvage therapy).^{63,78-80} A recent trial by the Intergroupe Francophone du Myelome and the Dana-Farber Cancer Institute compared early vs delayed ASCT in patients treated with VRD followed by lenalidomide maintenance.⁶³ Patients were randomized to receive either VRD (3 cycles) followed by ASCT and then VRD consolidation (2 cycles) vs VRD for 8 cycles with ASCT reserved for relapse. Both arms received lenalidomide maintenance for 1 year. A significant improvement in PFS was seen as expected with early ASCT, but this improvement has so far not translated into a difference in OS

TABLE 6. Selected Drugs With Major Single-Agent Activity in Multiple Myeloma

Agent	Usual starting dose	Postulated mechanism of action	Adverse effects
Thalidomide	50-200 mg orally days 1-28 every 4 wk	Binds to cereblon and activates cereblon E3 ubiquitin ligase activity, resulting in the rapid ubiquitination and degradation of 2 specific B-cell transcription factors, Ikaros family zinc finger proteins Ikaros (IKZF1) and Aiolos (IKZF3); antiangiogenesis, immunomodulation, and inhibition of tumor necrosis factor α . Direct cytotoxicity by inducing free radical-mediated DNA damage	Sedation, fatigue, rash, bradycardia, peripheral neuropathy, and constipation. Deep venous thrombosis is a serious adverse event necessitating routine prophylaxis with aspirin or other anticoagulant in all patients. Teratogen
Bortezomib	1.3 mg/m ² subcutaneously days 1, 8, 15, 22 every 28 d	Inhibits the ubiquitin-proteasome catalytic pathway in cells by binding directly with the 20S proteasome complex	Gastrointestinal, transient cytopenias, fatigue, and peripheral neuropathy
Lenalidomide	25 mg orally days 1-21 every 28 d	Cereblon-mediated ubiquitination and degradation of Ikaros (IKZF1) and Aiolos (IKZF3); antiangiogenesis, immunomodulation, and inhibition of tumor necrosis factor α . Direct cytotoxicity by inducing free radical-mediated DNA damage	Fatigue, rash, thrombocytopenia, and neutropenia. Deep venous thrombosis is a serious adverse event necessitating routine prophylaxis with aspirin or other anticoagulant in all patients. Diarrhea and leg cramps with long-term use. Teratogen
Pomalidomide	4 mg orally days 1-21 every 28 d	Same as thalidomide and lenalidomide	Fatigue, rash, thrombocytopenia, and neutropenia. Deep venous thrombosis is a serious adverse event necessitating routine prophylaxis with aspirin or other anticoagulant in all patients. Teratogen
Carfilzomib	27 mg/m ² intravenously days 1, 2, 8, 9, 15, 16 every 28 d	Proteasome inhibitor	Gastrointestinal, hypokalemia, hypertension, dyspnea. Serious cardiac dysfunction in approximately 5%
Daratumumab	16 mg/kg intravenously weekly for 8 wk, then every 2 wk for 16 wk, then once monthly	Monoclonal antibody targeting CD38	Infusion-related reactions, fatigue, anemia, nausea

(Table 9). Importantly the trial found that the 3-year OS in both arms was very high, which reflects the remarkable improvement that has occurred in MM therapy over the past decade. The trial also found that patients achieving an MRD-negative state had superior OS compared with those who remained MRD positive. Care should be taken in interpretation of these data; they confirm the value of MRD-negative state as a prognostic marker, but randomized trials are needed to determine if MRD negativity should be a goal of therapy and if therapy should be altered for patients based on MRD status.

As discussed previously, there are no data so far that early ASCT prolongs OS compared with delayed ASCT. However, given the inconvenience and the impact on quality of life with

prolonged chemotherapy, insurance, and other issues, we favor early ASCT if patients do not have a strong preference regarding the timing. We also prefer early ASCT in patients with intermediate- and high-risk MM on the basis of studies that found that patients with t(4;14) and del(17p) have achieved outcomes closer to those of standard-risk patients in trials that have incorporated early ASCT.⁸¹ Delayed ASCT is reasonable in patients with standard-risk MM who respond and tolerate initial therapy well and who seek to delay the procedure because of personal preference.

Tandem Transplant. With tandem (double) ASCT, patients receive a second planned ASCT after recovery from the first procedure.^{82,83} The Intergroupe Francophone du

TABLE 7. Selected Drugs With Activity in Combination With Other Active Agents in Multiple Myeloma

Agent	Usual starting dose	Postulated mechanism of action	Adverse effects
Elotuzumab	10 mg/kg intravenously weekly for 8 wk, then every 2 wk	Immunostimulatory monoclonal antibody targeting signaling lymphocytic activation molecule F7 (SLAMF7)	Infusion-related reactions, fatigue, infections
Panobinostat	20 mg orally thrice weekly 2 wk on, 1 wk off	Pan-deacetylase inhibitor; blocks aggresome pathway	Diarrhea, thrombocytopenia, fatigue

Myelome 94 randomized trial found significantly better event-free survival and OS in recipients of double vs single ASCT.⁸⁴ A similar benefit was also found in a randomized trial conducted in Italy.⁸⁵ These trials were done before the availability of lenalidomide, bortezomib, and other new agents. In both trials, the benefit of a second ASCT was restricted to patients who did not achieve a complete response or very good partial response (VGPR) (>90% reduction in M-protein level) with the first transplant. With modern induction regimens and ASCT, the vast majority of patients have VGPR or better status following the first ASCT, limiting the role of tandem ASCT. Further, 2 other randomized trials have not found a significant improvement in OS with tandem ASCT.^{86,87} The Bone Marrow Transplant Clinical Trials Network 0702 trial will clarify the role of tandem ASCT in patients receiving VRD initial therapy and lenalidomide maintenance. Until these results are available, we typically collect enough stem cells for 2 transplants in all eligible patients younger than 65 years. However, rather than performing tandem ASCT, the purpose of collecting additional stem cells is to preserve the possibility of a second ASCT at the time of relapse.

Allogeneic Transplant. The high TRM and morbidity related to graft-vs-host disease has made conventional allogeneic transplants unacceptable for most patients with MM. Data from randomized trials regarding the benefit of allogeneic ASCT are conflicting.^{88,89} Even with a tandem approach of ASCT followed by an HLA-identical sibling donor mini-allogeneic transplant, the TRM is high at approximately 10% to 15%. Given excellent outcomes with current therapy, allogeneic transplant has a limited role in MM. We recommend it primarily in young patients with high-risk MM in first or second

relapse who are willing to accept a high TRM and graft-vs-host disease–related morbidity in return for a small chance at long-term OS.

Consolidation/Maintenance Therapy

Numerous trials have been conducted over the years testing maintenance therapy in MM, either after ASCT or after 12 to 18 months of standard-dose therapy. However, the agents used were either ineffective, toxic, or both, and none of these approaches gained ground in clinical practice. Thalidomide had modest PFS and OS benefit as maintenance therapy in 2 randomized trials but has drawbacks of significant nonhematologic toxicity.^{90,91}

Posttransplant Maintenance Therapy. In the post-ASCT setting, maintenance therapy with lenalidomide, and with bortezomib, has shown promise. Two randomized trials reported better PFS with lenalidomide as post-ASCT maintenance therapy, and in one of these trials, an OS benefit was also observed.^{92,93} The OS benefit was primarily in patients who received lenalidomide as part of initial therapy before ASCT. One concern in the interpretation of these data is that patients in the control arm of these trials lacked uniform access to lenalidomide at relapse, and it is not clear whether the PFS improvement will be neutralized because patients in the control arm can always initiate the same therapy at the time of first relapse.^{94,95} There was also a clear increased risk of second cancers with lenalidomide maintenance therapy in both trials. The pros and cons of lenalidomide maintenance therapy should be considered carefully. We recommend lenalidomide maintenance therapy in standard-risk patients who do well with lenalidomide-containing initial therapy and do not achieve a VGPR following ASCT.³⁸

In patients with intermediate- and high-risk MM, we prefer bortezomib-based maintenance

TABLE 8. Major Treatment Regimens in Multiple Myeloma

Regimen	Usual dosing schedule ^a
Melphalan-prednisone (7-d schedule) ³⁹	Melphalan: 8-10 mg orally on days 1-7 Prednisone: 60 mg orally on days 1-7 Repeated every 6 wk
Thalidomide-dexamethasone ^{40,41,b}	Thalidomide: 200 mg orally on days 1-28 Dexamethasone: 40 mg orally on days 1, 8, 15, 22 Repeated every 4 wk
Lenalidomide-dexamethasone ⁴²	Lenalidomide: 25 mg orally on days 1-21 every 28 d Dexamethasone: 40 mg orally on days 1, 8, 15, 22 every 28 d Repeated every 4 wk
Bortezomib-dexamethasone ^{43,b}	Bortezomib: 1.3 mg/m ² intravenously on days 1, 8, 15, 22 Dexamethasone: 20 mg orally on day of and day after bortezomib (or 40 mg on days 1, 8, 15, 22) Repeated every 4 wk
Melphalan-prednisone-thalidomide ^{44,45}	Melphalan: 0.25 mg/kg orally on days 1-4 (use 0.20 mg/kg/d orally on days 1-4 in patients >75 y) Prednisone: 2 mg/kg orally on days 1-4 Thalidomide: 100-200 mg orally on days 1-28 (use 100-mg dose in patients >75 y) Repeated every 6 wk
Bortezomib-melphalan-prednisone ^{46-48,b}	Bortezomib: 1.3 mg/m ² intravenously on days 1, 8, 15, 22 Melphalan: 9 mg/m ² orally on days 1-4 Prednisone: 60 mg/m ² orally on days 1-4 Repeated every 35 d
Bortezomib-thalidomide-dexamethasone ^{49,b}	Bortezomib: 1.3 mg/m ² intravenously on days 1, 8, 15, 22 Thalidomide: 100-200 mg orally on days 1-21 Dexamethasone: 20 mg orally on day of and day after bortezomib (or 40 mg on days 1, 8, 15, 22) Repeated every 4 wk for 4 cycles as pretransplant induction therapy
Bortezomib-cyclophosphamide-dexamethasone ^{50,51}	Cyclophosphamide: 300 mg/m ² orally on days 1, 8, 15, 22 Bortezomib: 1.3 mg/m ² intravenously on days 1, 8, 15, 22 Dexamethasone: 40 mg orally on days 1, 8, 15, 22 Repeated every 4 wk ^c
Bortezomib-lenalidomide-dexamethasone ^{51,52,b}	Bortezomib: 1.3 mg/m ² intravenously on days 1, 8, 15 Lenalidomide: 25 mg orally on days 1-14 Dexamethasone: 20 mg orally on day of and day after bortezomib (or 40 mg on days 1, 8, 15, 22) Repeated every 3 wk ^d
Carfilzomib ⁵⁵	Carfilzomib: 20 mg/m ² (cycle 1) and 27 mg/m ² (subsequent cycles) intravenously on days 1, 2, 8, 9, 15, 16 Repeated every 4 wk ^c
Carfilzomib-cyclophosphamide-dexamethasone ^{56,e}	Carfilzomib 20 mg/m ² (cycle 1) and 36 mg/m ² (subsequent cycles) intravenously on days 1, 2, 8, 9, 15, 16 Cyclophosphamide: 300 mg/m ² orally on days 1, 8, 15 Dexamethasone: 40 mg orally on days 1, 8, 15 Repeated every 4 wk ^c
Carfilzomib-lenalidomide-dexamethasone ⁵⁷	Carfilzomib: 27 mg/m ² intravenously on days 1, 2, 8, 9, 15, 16 (Note: cycle 1 day 1 and 2, carfilzomib dose is 20 mg/m ²) Lenalidomide: 25 mg orally on days 1-21 Dexamethasone: 20 mg orally on day of and day after bortezomib (or 40 mg on days 1, 8, 15, 22) Repeated every 4 wk
Pomalidomide-dexamethasone ⁵⁸	Pomalidomide: 4 mg orally on days 1-21 Dexamethasone: 40 mg orally on days 1, 8, 15, 22 Repeated every 4 wk

Continued on next page

TABLE 8. Continued

Regimen	Usual dosing schedule ^a
Carfilzomib-pomalidomide-dexamethasone ⁵⁹	Carfilzomib: 27 mg/m ² intravenously on days 1, 2, 8, 9, 15, 16 (Note: cycle 1 day 1 and 2, carfilzomib dose is 20 mg/m ²) Pomalidomide: 4 mg orally on days 1-21 Dexamethasone: 40 mg orally on days 1, 8, 15, 22 Repeated every 4 wk

^aAll doses must be adjusted for performance status, renal function, blood counts, and other toxicities.
^bDoses of dexamethasone and/or bortezomib reduced based on subsequent data showing lower toxicity and similar efficacy with reduced doses.
^cThe day 22 dose of all 3 drugs is omitted if counts are low, or after initial response to improve tolerability or when the regimen is used as maintenance therapy; when used as maintenance therapy for high-risk patients, further delays can be instituted between cycles.
^dOmit day 15 dose if counts are low or when the regimen is used as maintenance therapy; when used as maintenance therapy for high-risk patients, lenalidomide dose may be decreased to 10-15 mg/d, and delays can be instituted between cycles as done in total therapy protocols.^{53,54}
^eDosing based on trial in newly diagnosed patients; in patients with relapse, cycle 2 carfilzomib dose is 27 mg/m² intravenously.
Adapted from Am J Hematol.²

therapy. In a randomized trial, patients receiving bortezomib given every other week as posttransplant maintenance therapy for 2 years had superior outcomes compared with thalidomide maintenance therapy.⁸¹ In high-risk patients, empirical use of a triplet regimen such as VRD as posttransplant therapy may be reasonable.⁹⁶ Randomized trials with the new proteasome inhibitor ixazomib are ongoing; ixazomib is administered orally once weekly and is hence ideally suited to the maintenance setting.

Maintenance After Standard-Dose Therapy. The role of maintenance therapy after an initial 12 to 18 months of treatment for newly diagnosed MM in patients not receiving an ASCT is evolving. Some data indicate that continuous therapy with Rd is superior in terms of PFS to Rd given for 18 months,⁶⁷ but whether this benefit will be seen after 18 months of a triplet therapy such as VRD is unclear. In one randomized trial, melphalan, prednisone, and lenalidomide (MPR) followed by lenalidomide maintenance therapy had superior PFS compared with MPR alone.⁹⁷ However, in this trial, the MPR arm was identical in terms of PFS to the melphalan plus prednisone arm, and no OS differences were seen, limiting more definitive conclusions concerning the value of maintenance therapy. If Rd is used as initial therapy, we recommend continuing it until progression. If a triplet

regimen is used, we recommend stopping therapy after 12 to 18 months in patients with standard-risk disease and continuing with bortezomib maintenance therapy in those with intermediate- and high-risk disease. Randomized trials with the new oral proteasome inhibitor ixazomib are ongoing in this setting as well.

Treatment of Relapsed MM

The approach to treatment of relapsed MM is complicated. Numerous effective regimens are available, and the choice of treatment depends on numerous factors such as drug availability, response to previous therapy, aggressiveness of the relapse, eligibility for ASCT, and whether the relapse occurred while the patient was receiving or not receiving therapy. In eligible patients, ASCT should be included in the consideration if the patient has never had an ASCT or if the remission duration with a previous ASCT exceeds 18 months (no maintenance therapy) or 36 months (with maintenance therapy).⁹⁸ Recent data support the use of triplet therapy for relapsed MM, but selected patients with indolent relapse can often be treated with a doublet regimen such as Rd or pomalidomide plus low-dose dexamethasone (PD). Multiple myeloma is characterized by relapses and remissions, with each remission typically lasting less than the previous one.⁹⁹ In the absence of toxicity, most regimens are continued until progression in the relapsed setting. However, in some regimens such as those employing

TABLE 9. Results of Recent Randomized Studies in Newly Diagnosed Myeloma^a

Reference, year	Regimen	No. of patients	Overall response rate (%)	CR plus VGPR (%)	Progression-free survival (mo), median	P value for progression-free survival	Overall survival	P value for overall survival
Facon et al, ⁶⁰ 2013	MPT	547	62	28	21.2	<.001	48 mo (median)	.016 ^b
	Rd for 18 mo	541	73	43	20.7		53 mo (median)	
	Rd until progression	535	75	44	25.5		56 mo (median)	
Durie et al, ⁶¹ 2015	Rd	232	N/A	N/A	31.0	.007	63	.011
	VRD	242	N/A	N/A	43.0		NR	
Moreau et al, ⁶² 2015	VTD	170	92	77	N/A	N/A	N/A	N/A
	VCD	170	84	66	N/A		N/A	
Attal et al, ⁶³ 2015	VRD-ASCT	350	N/A	58% CR	NR; 61% at 3 y	<.001	88% at 3 y	.25
	VRD	350	N/A	46% CR	NR; 48% at 3 y		88% at 3 y	

^aASCT = autologous stem cell transplant; CR = complete response; MPT = melphalan, prednisone, and thalidomide; N/A = not available; NR = not reached; NS = not significant; Rd = lenalidomide plus dexamethasone; VCD = bortezomib, cyclophosphamide, and dexamethasone; VGPR = very good partial response; VRD = bortezomib, lenalidomide, and dexamethasone; VTD = bortezomib, thalidomide, and dexamethasone.

^bRd until progression vs MPT.

bortezomib, carfilzomib, or alkylators, it may be reasonable to stop therapy with these drugs once a stable plateau has been reached in order to minimize risks of serious toxicity.

New agents approved for the treatment of relapsed MM include carfilzomib, pomalidomide, and panobinostat. The most common regimens and new drugs used in the treatment of relapsed refractory MM are discussed in the subsequent sections.

Bortezomib- and Lenalidomide-Based Regimens. Lenalidomide plus dexamethasone is an effective regimen in relapsed MM, although the dose of dexamethasone must be reduced from the schedules used in the original pivotal trials.^{100,101} Triplet regimens such as VRD, VCD, and VTD can also be used in the relapsed refractory MM setting and are well tolerated when low-dose dexamethasone and weekly subcutaneous bortezomib schedules are used.¹⁰²⁻¹⁰⁴

Carfilzomib- and Pomalidomide-Based Regimens. Carfilzomib is a keto-epoxide tetrapeptide proteasome inhibitor approved for the treatment of relapsed refractory MM in patients who have been treated previously with lenalidomide and bortezomib.⁵⁵ In a phase 3 trial of 792 patients, KRD was associated with better response rates, PFS, and OS compared with Rd.¹⁰⁵ Progression-free survival was 26.3 months

with KRD vs 17.6 months in the control group ($P=.0001$). The 2-year survival rates were 73.3% and 65.0%, respectively ($P=.04$). On the basis of these results, KRD is now an important option for the treatment of relapsed MM. There is debate about whether KRD (or similar carfilzomib-based regimens) should be used before bortezomib-based regimens in relapsed MM. Support for carfilzomib as a more potent proteasome inhibitor than bortezomib comes from a randomized trial in which carfilzomib-dexamethasone doubled PFS compared with bortezomib-dexamethasone in relapsed MM (PFS, 18.7 vs 9.4 months, respectively; $P<.001$).⁶⁹ However, the dose of carfilzomib used in this trial (56 mg/m²) was twice the approved dose and has a much higher cost compared with bortezomib. Further, the dosing of bortezomib used in this trial was suboptimal (twice-weekly schedule), making it difficult to make definitive conclusions. Carfilzomib does have lower risk of neurotoxicity than bortezomib, but a small proportion of patients (5%) may experience serious cardiac adverse effects.

Pomalidomide is an analogue of lenalidomide and thalidomide approved for the treatment of relapsed refractory MM. It has significant activity in relapsed refractory MM, even in patients in whom lenalidomide^{106,107} or lenalidomide plus bortezomib^{58,108} has been ineffective. In a randomized trial of 302 patients with refractory

MM, PD was superior to high-dose dexamethasone (median PFS, 4.0 vs 1.9 months, respectively; $P < .0001$).¹⁰⁹ As with Rd, the doublet regimen of PD is a reasonable option for patients with indolent relapse. More often, however, pomalidomide must be administered in combinations such as pomalidomide, cyclophosphamide, and prednisone; pomalidomide, bortezomib, and dexamethasone; or carfilzomib, pomalidomide, and dexamethasone.

Panobinostat. Panobinostat is a pan-deacetylase inhibitor approved in 2015 for the treatment of relapsed and refractory MM.¹¹⁰ It is the first agent from a new class of drugs with meaningful clinical activity in MM in nearly 15 years. Its putative mechanism of action is to block the aggresome pathway, an alternative route for cells to bypass the lethal effects of proteasome inhibition. By combining bortezomib and panobinostat, there is simultaneous blockade of both proteasome and aggresome pathways.^{111,112} In a randomized trial of 768 patients, bortezomib-dexamethasone plus panobinostat was associated with superior PFS compared with bortezomib-dexamethasone plus placebo (median PFS, 12 vs 8.1 months, respectively; $P < .0001$).¹¹⁰ However, panobinostat therapy was associated with grade 3 diarrhea in approximately 25% of patients, and care should be exercised when using this drug. We recommend a lower dose than the approved starting dose. We also recommend that bortezomib be used in the once-weekly subcutaneous schedule rather than the twice-weekly regimen used in the pivotal trial.^{47,48,65}

Liposomal Doxorubicin. Anthracyclines have marginal single-agent activity in MM. A phase 3 randomized trial found that median time to progression was superior with bortezomib plus pegylated liposomal doxorubicin compared with bortezomib alone (9.3 vs 6.5 months, respectively; $P < .001$).¹¹³ Overall survival at 15 months was also superior (76% compared with 65%, respectively; $P = .03$). Despite these results, liposomal doxorubicin is infrequently used in the treatment of relapsed MM given the availability of other active agents.

Monoclonal Antibodies. Two monoclonal antibodies (daratumumab and SAR650984) targeting CD38 have shown promise in

TABLE 10. Criteria for High-Risk Smoldering Multiple Myeloma^{a,b}

Bone marrow clonal plasma cells $\geq 10\%$ and any one or more of the following:
Serum M protein ≥ 30 g/L
IgA SMM
Immunoparesis with reduction of 2 uninvolved immunoglobulin isotypes
Serum involved/uninvolved free light chain ratio ≥ 8 (but less than 100)
Progressive increase in M-protein level (evolving type of SMM) ^c
Bone marrow clonal plasma cells 50%-60%
Abnormal plasma cell immunophenotype ($\geq 95\%$ of bone marrow plasma cells are clonal) and reduction of one or more uninvolved immunoglobulin isotypes
t(4;14) or del(17p) or gain(1q)
Increased circulating plasma cells
MRI with diffuse abnormalities or 1 focal lesion
PET-CT with focal lesion with increased uptake without underlying osteolytic bone destruction

^aFLC = free light chain; MRI = magnetic resonance imaging; PET-CT = positron emission tomography-computed tomography; SMM = smoldering multiple myeloma.

^bNote that the term *smoldering multiple myeloma* excludes patients without end-organ damage who meet revised definition of multiple myeloma, namely clonal bone marrow plasma cells $\geq 60\%$ or serum FLC ratio ≥ 100 (plus measurable involved FLC level ≥ 100 mg/L) or more than one focal lesion on MRI. The risk factors listed in this table are not meant to be indications for therapy; they are variables associated with a high risk of progression of SMM and identify patients who need close follow-up and consideration for clinical trials.

^cIncrease in serum M protein by $\geq 25\%$ on 2 successive evaluations within a 6-month period. From Blood.¹²⁸

relapsed refractory MM. In a phase 2 trial, daratumumab as a single agent produced a response rate of approximately 30% in heavily pretreated patients.¹¹⁴ These results are very encouraging, and daratumumab has been recently approved in the United States for use in relapsed refractory MM on the basis of these data.

Elotuzumab, a monoclonal antibody targeting the signaling lymphocytic activation molecule F7, also has activity in relapsed MM.¹¹⁵ Unlike anti-CD38 antibodies, elotuzumab does not appear to have any single-agent activity. However, it seems to have synergistic activity when combined with Rd. In a phase 3 trial of 646 patients, elotuzumab plus Rd was superior to Rd in terms of PFS (median PFS, 19.4 vs 14.9 months, respectively; $P < .001$). Elotuzumab is also well tolerated and has been approved in the United States for the treatment of relapsed MM based on these data.

Ixazomib. Ixazomib is an oral proteasome inhibitor that is active in both the relapsed refractory setting and in newly diagnosed MM. In a randomized controlled trial in relapsed MM, ixazomib, lenalidomide, and dexamethasone was reported to improve PFS compared

with Rd.¹¹⁶ On the basis of these results, ixazomib has now been approved for the treatment of relapsed MM in the United States. It has the advantage of once-weekly oral administration. Compared with bortezomib, it has more gastrointestinal adverse events but lower risk of neurotoxicity.

Other Emerging Options. Other promising agents include marizomib (a new proteasome inhibitor), oprozomib (an oral proteasome inhibitor related to carfilzomib), filanesib (a kinesin spindle protein inhibitor), dinaciclib (a cyclin-dependent kinase inhibitor), ABT-199 (a selective BCL-2 inhibitor), and LGH-447 (pan-PIM kinase inhibitor). Each of these agents has single-agent activity in relapsed MM.

Supportive Care

Hypercalcemia. The mainstay of therapy for hypercalcemia is hydration, corticosteroids, and bisphosphonates (pamidronate or zoledronic acid). Pamidronate at 60 to 90 mg intravenously over 2 to 4 hours or zoledronic acid at 4 mg intravenously over 15 minutes will normalize the calcium levels within 24 to 72 hours in most patients.^{117,118} In patients with refractory disease, salmon calcitonin can be used.

Skeletal Lesions. The most important element in supportive care is the use of bisphosphonates to prevent or reduce the number of skeletal lesions.¹¹⁹⁻¹²¹ Zoledronic acid or pamidronate once monthly at least for the first 1 to 2 years is recommended for almost all patients with MM who have evidence of MM bone disease.^{120,122} Data from a randomized trial revealed that in such patients, there is also a favorable effect on OS.¹²³

In patients with osteolytic bone disease, the use of local radiation should be limited to those with spinal cord compression from extramedullary tumor extension and to patients with bone pain refractory to analgesics and systemic therapy. Vertebroplasty (injection of methylmethacrylate into a collapsed vertebral body) or kyphoplasty (introduction of an inflatable bone tamp into the vertebral body and after inflation the injection of methylmethacrylate into the cavity) can be used to decrease pain from vertebral fractures.¹²⁴ Some patients with

impending fracture may need prophylactic surgical intervention.

Prevention of Infections. Patients with MM should receive pneumococcal and influenza vaccinations. Intravenously administered gamma globulin every 3 to 4 weeks is indicated if patients have recurrent serious infections associated with severe hypogammaglobulinemia. The role of prophylactic antibiotics in patients receiving chemotherapy for MM has not been settled. Randomized trials have not found significant benefit.¹²⁵ We do recommend acyclovir for all patients receiving bortezomib or carfilzomib to prevent herpes zoster activation. Prophylaxis against *Pneumocystis jiroveci* should be considered in all patients receiving long-term corticosteroids.¹²⁶ However, there is a risk of serious skin toxicity in patients receiving an immunomodulatory agent (thalidomide, lenalidomide) and trimethoprim-sulfamethoxazole. In such patients, alternative antibiotics (such as levofloxacin) and alternative agents for *Pneumocystis* prophylaxis should be considered.

Hyperviscosity Syndrome. A small proportion of patients with MM, especially of the IgA subtype, have development of hyperviscosity syndrome. Plasmapheresis promptly relieves the symptoms and should be performed regardless of the viscosity level if the patient has signs or symptoms of hyperviscosity.¹²⁷

SMOLDERING MM

Smoldering MM is a stage that is clinically positioned between MGUS and MM.¹²⁸ It comprises a heterogeneous group of patients, some of whom have MM that has not yet manifested with myeloma-defining events and some who have premalignant MGUS. Patients with SMM have a risk of progression of approximately 10% per year for the first 5 years, 3% per year for the next 5 years, and 1% per year thereafter.¹¹ Patients with the highest risk of progression (ultrahigh risk) have now been reclassified as having MM by the new International Myeloma Working Group criteria.¹ Within the current definition of SMM (Table 1), there are 2 groups of patients: high risk (25% per year risk of progression in the first 2 years) and low risk (~5% per year risk of progression).¹²⁸ Criteria for high-risk SMM are presented in Table 10. The presence of one or more of these factors is

associated with a median time to progression to MM of approximately 2 years. Early studies in SMM failed to document an advantage for early intervention but were limited by lack of power, safe and effective drugs, and a risk-adapted strategy.^{129,130} A recent randomized trial conducted in Spain found that patients with high-risk SMM had an OS benefit when treated with Rd compared with observation (3-year survival rate, 94% vs 80%, respectively; $P=.03$).¹³¹ These are very promising results, and further confirmatory studies are ongoing. Observation is still the standard of care for SMM; however, selected high-risk patients with SMM and multiple risk factors can be considered for therapy. They are also candidates for clinical trials testing early intervention.

CONCLUSION

Major advances in the diagnosis and treatment of MM have occurred in the past decade. Future trials should address the optimal sequencing of the various treatment regimens available, the incorporation of monoclonal antibodies to existing regimens in a cost-effective and safe manner, the role of MRD as a goal of therapy, optimal treatment of high-risk MM and EMD, and early intervention toward a cure of the disease.

Abbreviations and Acronyms: ASCT = autologous stem cell transplant; EMD = extramedullary disease; FLC = free light chain; ISS = International Staging System; KRd = carfilzomib, lenalidomide, and dexamethasone; MGUS = monoclonal gammopathy of undetermined significance; MM = multiple myeloma; MPR = melphalan, prednisone, and lenalidomide; MRD = minimal residual disease; OS = overall survival; PD = pomalidomide plus low-dose dexamethasone; PFS = progression-free survival; Rd = lenalidomide plus dexamethasone; SMM = smoldering MM; TRM = treatment-related mortality; VCD = bortezomib, cyclophosphamide, and dexamethasone; VGPR = very good partial response; VRD = bortezomib, lenalidomide, and dexamethasone; VTD = bortezomib, thalidomide, and dexamethasone

Grant Support: This work was supported in part by grants CA 107476, CA186781, and CA 168762 from the National Cancer Institute.

Potential Competing Interests: Dr Rajkumar reports no competing interests. Dr Kumar has received research support for clinical trials from Celgene Corporation, Millennium Pharmaceuticals, Inc, Novartis Pharmaceuticals Corporation, Janssen Pharmaceuticals, Inc, and Sanofi.

Correspondence: Address to S. Vincent Rajkumar, MD, Division of Hematology, Mayo Clinic, 200 First St SW,

Rochester, MN 55905 (rajkumar.vincent@mayo.edu). Individual reprints of this article and a bound reprint of the entire Symposium on Neoplastic Hematology and Medical Oncology will be available for purchase from our website www.mayoclinicproceedings.org.

The Symposium on Neoplastic Hematology and Medical Oncology will continue in an upcoming issue.

REFERENCES

1. Rajkumar SV, Dimopoulos MA, Palumbo A, et al. International Myeloma Working Group updated criteria for the diagnosis of multiple myeloma. *Lancet Oncol*. 2014;15(12):e538-e548.
2. Rajkumar SV. Multiple myeloma: 2014 update on diagnosis, risk-stratification, and management. *Am J Hematol*. 2014; 89(10):999-1009.
3. Kyle RA, Therneau TM, Rajkumar SV, Larson DR, Plevak MF, Melton LJ III. Incidence of multiple myeloma in Olmsted County, Minnesota: trend over 6 decades. *Cancer*. 2004; 101(11):2667-2674.
4. Landgren O, Gridley G, Turesson I, et al. Risk of monoclonal gammopathy of undetermined significance (MGUS) and subsequent multiple myeloma among African American and white veterans in the United States. *Blood*. 2006;107(3):904-906.
5. Landgren O, Graubard BI, Katzmann JA, et al. Racial disparities in the prevalence of monoclonal gammopathies: a population-based study of 12,482 persons from the National Health and Nutritional Examination Survey. *Leukemia*. 2014;28(7):1537-1542.
6. Kyle RA, Gertz MA, Witzig TE, et al. Review of 1027 patients with newly diagnosed multiple myeloma. *Mayo Clin Proc*. 2003; 78(1):21-33.
7. Kyle RA, Therneau TM, Rajkumar SV, et al. A long-term study of prognosis in monoclonal gammopathy of undetermined significance. *N Engl J Med*. 2002;346(8):564-569.
8. Kyle RA, Therneau TM, Rajkumar SV, et al. Prevalence of monoclonal gammopathy of undetermined significance. *N Engl J Med*. 2006;354(13):1362-1369.
9. Dispenzieri A, Katzmann JA, Kyle RA, et al. Prevalence and risk of progression of light-chain monoclonal gammopathy of undetermined significance: a retrospective population-based cohort study [published correction appears in *Lancet*. 2010; 376(9738):332]. *Lancet*. 2010;375(9727):1721-1728.
10. Landgren O, Kyle RA, Pfeiffer RM, et al. Monoclonal gammopathy of undetermined significance (MGUS) consistently precedes multiple myeloma: a prospective study. *Blood*. 2009; 113(22):5412-5417.
11. Kyle RA, Remstein ED, Therneau TM, et al. Clinical course and prognosis of smoldering (asymptomatic) multiple myeloma. *N Engl J Med*. 2007;356(25):2582-2590.
12. Myeloma Trialists' Collaborative Group. Combination chemotherapy versus melphalan plus prednisone as treatment for multiple myeloma: an overview of 6,633 patients from 27 randomized trials. *J Clin Oncol*. 1998;16(12):3832-3842.
13. Attal M, Harousseau JL, Stoppa AM, et al; Intergroupe Français du Myélome. A prospective, randomized trial of autologous bone marrow transplantation and chemotherapy in multiple myeloma. *N Engl J Med*. 1996;335(2):91-97.
14. Child JA, Morgan GJ, Davies FE, et al; Medical Research Council Adult Leukaemia Working Party. High-dose chemotherapy with hematopoietic stem-cell rescue for multiple myeloma. *N Engl J Med*. 2003;348(19):1875-1883.
15. Singhal S, Mehta J, Desikan R, et al. Antitumor activity of thalidomide in refractory multiple myeloma [published correction appears in *N Engl J Med*. 2000;342(5):364]. *N Engl J Med*. 1999;341(21):1565-1571.
16. Richardson PG, Barlogie B, Berenson J, et al. A phase 2 study of bortezomib in relapsed, refractory myeloma. *N Engl J Med*. 2003;348(26):2609-2617.

17. Richardson PG, Schlossman RL, Weller E, et al. Immunomodulatory drug CC-5013 overcomes drug resistance and is well tolerated in patients with relapsed multiple myeloma. *Blood*. 2002;100(9):3063-3067.
18. Kumar SK, Rajkumar SV, Dispenzieri A, et al. Improved survival in multiple myeloma and the impact of novel therapies. *Blood*. 2008;111(5):2516-2520.
19. Kumar SK, Dispenzieri A, Lacy MQ, et al. Continued improvement in survival in multiple myeloma: changes in early mortality and outcomes in older patients. *Leukemia*. 2014;28(5):1122-1128.
20. Short KD, Rajkumar SV, Larson D, et al. Incidence of extramedullary disease in patients with multiple myeloma in the era of novel therapy, and the activity of pomalidomide on extramedullary myeloma. *Leukemia*. 2011;25(6):906-908.
21. Katzmann JA, Dispenzieri A, Kyle R, et al. Elimination of the need for urine studies in the screening algorithm for monoclonal gammopathies by using serum immunofixation and free light chain assays. *Mayo Clin Proc*. 2006;81(12):1575-1578.
22. Chawla SS, Kumar SK, Dispenzieri A, et al. Clinical course and prognosis of non-secretory multiple myeloma. *Eur J Haematol*. 2015;95(1):57-64.
23. Regelin JC, Minnema MC, Terpos E, et al. Comparison of modern and conventional imaging techniques in establishing multiple myeloma-related bone disease: a systematic review. *Br J Haematol*. 2013;162(1):50-61.
24. Roodman GD. Pathogenesis of myeloma bone disease. *Leukemia*. 2009;23(3):435-441.
25. Hillengass J, Fechtner K, Weber MA, et al. Prognostic significance of focal lesions in whole-body magnetic resonance imaging in patients with asymptomatic multiple myeloma. *J Clin Oncol*. 2010;28(9):1606-1610.
26. Kumar S, Fonseca R, Ketterling RP, et al. Trisomies in multiple myeloma: impact on survival in patients with high-risk cytogenetics. *Blood*. 2012;119(9):2100-2105.
27. Rajan AM, Rajkumar SV. Interpretation of cytogenetic results in multiple myeloma for clinical practice. *Blood Cancer J*. 2015;5:e365.
28. Kuehl WM, Bergsagel PL. Multiple myeloma: evolving genetic events and host interactions. *Nat Rev Cancer*. 2002;2(3):175-187.
29. Bergsagel PL, Kuehl WM. Chromosome translocations in multiple myeloma. *Oncogene*. 2001;20(40):5611-5622.
30. Fonseca R, Bailey RJ, Ahmann GJ, et al. Genomic abnormalities in monoclonal gammopathy of undetermined significance. *Blood*. 2002;100(4):1417-1424.
31. Seidl S, Kaufmann H, Drach J. New insights into the pathophysiology of multiple myeloma. *Lancet Oncol*. 2003;4(9):557-564.
32. Russell SJ, Rajkumar SV. Multiple myeloma and the road to personalised medicine. *Lancet Oncol*. 2011;12(7):617-619.
33. Durie BG, Salmon SE. A clinical staging system for multiple myeloma: correlation of measured myeloma cell mass with presenting clinical features, response to treatment, and survival. *Cancer*. 1975;36(3):842-854.
34. Greipp PR, San Miguel J, Durie BG, et al. International staging system for multiple myeloma. *J Clin Oncol*. 2005;23(15):3412-3420.
35. Hari PN, Zhang MJ, Roy V, et al. Is the international staging system superior to the Durie-Salmon staging system? a comparison in multiple myeloma patients undergoing autologous transplant. *Leukemia*. 2009;23(8):1528-1534.
36. Kumar SK, Mikhael JR, Buadi FK, et al. Management of newly diagnosed symptomatic multiple myeloma: updated Mayo Stratification of Myeloma and Risk-Adapted Therapy (mSMART) consensus guidelines. *Mayo Clin Proc*. 2009;84(12):1095-1110.
37. Palumbo A, Avet-Loiseau H, Oliva S, et al. Revised International Staging System for Multiple Myeloma: a report from International Myeloma Working Group. *J Clin Oncol*. 2015;33(26):2863-2869.
38. Mikhael JR, Dingli D, Roy V, et al. Management of newly diagnosed symptomatic multiple myeloma: updated Mayo Stratification of Myeloma and Risk-Adapted Therapy (mSMART) consensus guidelines 2013. *Mayo Clin Proc*. 2013;88(4):360-376.
39. Kyle RA, Rajkumar SV. Multiple myeloma [published correction appears in *N Engl J Med*. 2005;352(11):1163]. *N Engl J Med*. 2004;351(18):1860-1873.
40. Rajkumar SV, Blood E, Vesole D, Fonseca R, Greipp PR. Phase III clinical trial of thalidomide plus dexamethasone compared with dexamethasone alone in newly diagnosed multiple myeloma: a clinical trial coordinated by the Eastern Cooperative Oncology Group. *J Clin Oncol*. 2006;24(3):431-436.
41. Rajkumar SV, Rosiñol L, Hussein M, et al. Multicenter, randomized, double-blind, placebo-controlled study of thalidomide plus dexamethasone compared with dexamethasone as initial therapy for newly diagnosed multiple myeloma. *J Clin Oncol*. 2008;26(13):2171-2177.
42. Rajkumar SV, Jacobus S, Callander NS, et al; Eastern Cooperative Oncology Group. Lenalidomide plus high-dose dexamethasone versus lenalidomide plus low-dose dexamethasone as initial therapy for newly diagnosed multiple myeloma: an open-label randomised controlled trial [published correction appears in *Lancet Oncol*. 2010;11(1):14]. *Lancet Oncol*. 2010;11(1):29-37.
43. Harousseau JL, Attal M, Leleu X, et al. Bortezomib plus dexamethasone as induction treatment prior to autologous stem cell transplantation in patients with newly diagnosed multiple myeloma: results of an IFM phase II study. *Haematologica*. 2006;91(11):1498-1505.
44. Facon T, Mary JY, Hulin C, et al; Intergroupe Francophone du Myélome. Melphalan and prednisone plus thalidomide versus melphalan and prednisone alone or reduced-intensity autologous stem cell transplantation in elderly patients with multiple myeloma (IFM 99-06): a randomised trial. *Lancet*. 2007;370(9594):1209-1218.
45. Hulin C, Facon T, Rodon P, et al. Efficacy of melphalan and prednisone plus thalidomide in patients older than 75 years with newly diagnosed multiple myeloma: IFM 01/01 trial. *J Clin Oncol*. 2009;27(22):3664-3670.
46. San Miguel JF, Schlag R, Khuageva NK, et al; VISTA Trial Investigators. Bortezomib plus melphalan and prednisone for initial treatment of multiple myeloma. *N Engl J Med*. 2008;359(9):906-917.
47. Mateos MV, Oriol A, Martínez-López J, et al. Bortezomib, melphalan, and prednisone versus bortezomib, thalidomide, and prednisone as induction therapy followed by maintenance treatment with bortezomib and thalidomide versus bortezomib and prednisone in elderly patients with untreated multiple myeloma: a randomised trial. *Lancet Oncol*. 2010;11(10):934-941.
48. Palumbo A, Bringhen S, Rossi D, et al. Bortezomib-melphalan-prednisone-thalidomide followed by maintenance with bortezomib-thalidomide compared with bortezomib-melphalan-prednisone for initial treatment of multiple myeloma: a randomized controlled trial. *J Clin Oncol*. 2010;28(34):5101-5109.
49. Cavo M, Tacchetti P, Patriarca F, et al; GIMEMA Italian Myeloma Network. Bortezomib with thalidomide plus dexamethasone compared with thalidomide plus dexamethasone as induction therapy before, and consolidation therapy after, double autologous stem-cell transplantation in newly diagnosed multiple myeloma: a randomised phase 3 study. *Lancet*. 2010;376(9758):2075-2085.
50. Reeder CB, Reece DE, Kukreti V, et al. Cyclophosphamide, bortezomib and dexamethasone induction for newly diagnosed multiple myeloma: high response rates in a phase II clinical trial. *Leukemia*. 2009;23(7):1337-1341.
51. Kumar S, Flinn I, Richardson PG, et al. Randomized, multicenter, phase 2 study (EVOLUTION) of combinations of

- bortezomib, dexamethasone, cyclophosphamide, and lenalidomide in previously untreated multiple myeloma. *Blood*. 2012;119(19):4375-4382.
52. Richardson PG, Weller E, Lonial S, et al. Lenalidomide, bortezomib, and dexamethasone combination therapy in patients with newly diagnosed multiple myeloma. *Blood*. 2010;116(5):679-686.
53. Barlogie B, Anaissie E, van Rhee F, et al. Incorporating bortezomib into upfront treatment for multiple myeloma: early results of Total Therapy 3. *Br J Haematol*. 2007;138(2):176-185.
54. van Rhee F, Szymonifka J, Anaissie E, et al. Total Therapy 3 for multiple myeloma: prognostic implications of cumulative dosing and premature discontinuation of VTD maintenance components, bortezomib, thalidomide, and dexamethasone, relevant to all phases of therapy. *Blood*. 2010;116(8):1220-1227.
55. Siegel DS, Martin T, Wang M, et al. A phase 2 study of single-agent carfilzomib (PX-171-003-A1) in patients with relapsed and refractory multiple myeloma. *Blood*. 2012;120(14):2817-2825.
56. Bringhen S, Petrucci MT, Larocca A, et al. Carfilzomib, cyclophosphamide, and dexamethasone in patients with newly diagnosed multiple myeloma: a multicenter, phase 2 study. *Blood*. 2014;124(1):63-69.
57. Jakubowiak AJ. Evolution of carfilzomib dose and schedule in patients with multiple myeloma: a historical overview. *Cancer Treat Rev*. 2014;40(6):781-790.
58. Richardson PG, Siegel DS, Vij R, et al. Pomalidomide alone or in combination with low-dose dexamethasone in relapsed and refractory multiple myeloma: a randomized phase 2 study. *Blood*. 2014;123(12):1826-1832.
59. Shah JJ, Stadtmauer EA, Abonour R, et al. Phase I/II dose expansion of a multi-center trial of carfilzomib and pomalidomide with dexamethasone (Car-Pom-d) in patients with relapsed/refractory multiple myeloma [abstract]. *Blood*. 2013;122(21):690.
60. Facon T, Dimopoulos MA, Dispenzieri A, et al. Initial phase 3 results of the First (Frontline Investigation Of Lenalidomide + Dexamethasone Versus Standard Thalidomide) Trial (MM-020/IFM 07 01) in newly diagnosed multiple myeloma (NDMM) patients (Pts) ineligible for stem cell transplantation (SCT). *Blood*. 2013;122:2.
61. Durie B, Hoering A, Rajkumar SV, et al. Bortezomib, lenalidomide and dexamethasone vs. lenalidomide and dexamethasone in patients (Pts) with previously untreated multiple myeloma without an intent for immediate autologous stem cell transplant (ASCT): results of the randomized phase III SWOG S0777 [ASH Annual Meeting Abstracts 2015, abstract 25]. American Society of Hematology website. <https://ash.confex.com/ash/2015/webprogram/Paper79014.html>. Accessed November 10, 2015.
62. Moreau P, Hulin C, Macro M, et al. Bortezomib, thalidomide and dexamethasone (VTD) is superior to bortezomib, cyclophosphamide and dexamethasone (VCD) prior to autologous stem cell transplantation for patients with de novo multiple myeloma: results of the prospective IFM 2013-04 trial [ASH Annual Meeting Abstracts 2015, abstract 393]. American Society of Hematology website. <https://ash.confex.com/ash/2015/webprogram/Paper81103.html>. Accessed November 10, 2015.
63. Attal M, Lauwers-Cances V, Hulin C, et al. Autologous transplantation for multiple myeloma in the era of new drugs: a phase III study of the Intergroupe Francophone Du Myelome (IFM/DFCI 2009 trial) [ASH Annual Meeting Abstracts 2015, abstract 391]. American Society of Hematology website. <https://ash.confex.com/ash/2015/webprogram/Paper78452.html>. Accessed November 10, 2015.
64. Moreau P, Facon T, Attal M, et al. Comparison of reduced-dose bortezomib plus thalidomide plus dexamethasone (vTD) to bortezomib plus dexamethasone (VD) as induction treatment prior to ASCT in de novo multiple myeloma (MM): results of IFM2007-02 study [abstract]. *J Clin Oncol*. 2010;28(15, suppl):8014.
65. Moreau P, Pylypenko H, Grosicki S, et al. Subcutaneous versus intravenous administration of bortezomib in patients with relapsed multiple myeloma: a randomised, phase 3, non-inferiority study [published correction appears in *Lancet Oncol*. 2011;12(6):522]. *Lancet Oncol*. 2011;12(5):431-440.
66. Palumbo A, Bringhen S, Mateos MV, et al. Geriatric assessment predicts survival and toxicities in elderly myeloma patients: an International Myeloma Working Group report. *Blood*. 2015;125(13):2068-2074.
67. Benboubker L, Dimopoulos MA, Dispenzieri A, et al; FIRST Trial Team. Lenalidomide and dexamethasone in transplant-ineligible patients with myeloma. *N Engl J Med*. 2014;371(10):906-917.
68. Jakubowiak AJ, Dytfeld D, Griffith KA, et al. A phase I/2 study of carfilzomib in combination with lenalidomide and low-dose dexamethasone as a frontline treatment for multiple myeloma. *Blood*. 2012;120(9):1801-1809.
69. Dimopoulos MA, Moreau P, Palumbo A, et al. Carfilzomib and dexamethasone (Kd) vs bortezomib and dexamethasone (Vd) in patients (pts) with relapsed multiple myeloma (RMM): results from the phase III study ENDEAVOR [abstract]. *J Clin Oncol*. 2015;33(suppl):8509.
70. Dimopoulos MA, Terpos E, Chanan-Khan A, et al. Renal impairment in patients with multiple myeloma: a consensus statement on behalf of the International Myeloma Working Group. *J Clin Oncol*. 2010;28(33):4976-4984.
71. Burnette BL, Leung N, Rajkumar SV. Renal improvement in myeloma with bortezomib plus plasma exchange [letter]. *N Engl J Med*. 2011;364(24):2365-2366.
72. Clark WF, Stewart AK, Rock GA, et al; Canadian Apheresis Group. Plasma exchange when myeloma presents as acute renal failure: a randomized, controlled trial [published correction appears in *Ann Intern Med*. 2007;146(6):471]. *Ann Intern Med*. 2005;143(11):777-784.
73. Gonsalves WL, Leung N, Rajkumar SV, et al. Improvement in renal function and its impact on survival in patients with newly diagnosed multiple myeloma. *Blood Cancer J*. 2015;5:e296.
74. Bladé J, Vesole DH, Gertz M. Transplantation for multiple myeloma: who, when, how often? *Blood*. 2003;102(10):3469-3477.
75. Kumar A, Loughran T, Alsina M, Durie BG, Djulbegovic B. Management of multiple myeloma: a systematic review and critical appraisal of published studies. *Lancet Oncol*. 2003;4(5):293-304.
76. Gertz MA, Ansell SM, Dingli D, et al. Autologous stem cell transplantation in 716 patients with multiple myeloma: low treatment-related mortality, feasibility of outpatient transplant, and impact of a multidisciplinary quality initiative. *Mayo Clin Proc*. 2008;83(10):1131-1135.
77. Moreau P, Facon T, Attal M, et al; Intergroupe Francophone du Myelome. Comparison of 200 mg/m² melphalan and 8 Gy total body irradiation plus 140 mg/m² melphalan as conditioning regimens for peripheral blood stem cell transplantation in patients with newly diagnosed multiple myeloma: final analysis of the Intergroupe Francophone du Myelome 9502 randomized trial. *Blood*. 2002;99(3):731-735.
78. Fermand JP, Ravaud P, Chevret S, et al. High-dose therapy and autologous peripheral blood stem cell transplantation in multiple myeloma: up-front or rescue treatment? results of a multicenter sequential randomized clinical trial. *Blood*. 1998;92(9):3131-3136.
79. Facon T, Mary JY, Harousseau JL, et al. Front-line or rescue autologous bone marrow transplantation (ABMT) following a first course of high dose melphalan (HDM) in multiple myeloma (MM): preliminary results of a prospective randomized trial (CIAM) protocol [abstract 2729]. *Blood*. 1996;88(suppl 1, pt 1):685a.

80. Barlogie B, Kyle R, Anderson K, et al. Comparable survival in multiple myeloma (MM) with high dose therapy (HDT) employing MEL 140 mg/m² + TBI 12 Gy autotransplants versus standard dose therapy with VBMCP and no benefit from interferon (IFN) maintenance: results of Intergroup Trial S9321 [abstract A-135]. *Blood*. 2003;102(11):42a.
81. Sonneveld P, Schmidt-Wolf IGH, van der Holt B, et al. Bortezomib induction and maintenance treatment in patients with newly diagnosed multiple myeloma: results of the randomized phase III HOVON-65/GMMG-HD4 trial [published correction appears in *J Clin Oncol*. 2012;30(29):3654]. *J Clin Oncol*. 2012;30(24):2946-2955.
82. Barlogie B, Jagannath S, Vesole DH, et al. Superiority of tandem autologous transplantation over standard therapy for previously untreated multiple myeloma. *Blood*. 1997;89(3):789-793.
83. Barlogie B, Jagannath S, Desikan KR, et al. Total therapy with tandem transplants for newly diagnosed multiple myeloma. *Blood*. 1999;93(1):55-65.
84. Attal M, Harousseau JL, Facon T, et al. Single versus double autologous stem-cell transplantation for multiple myeloma. *N Engl J Med*. 2003;349:2495-2502.
85. Cavo M, Tosi P, Zamagni E, et al. Prospective, randomized study of single compared with double autologous stem-cell transplantation for multiple myeloma: Bologna 96 clinical study. *J Clin Oncol*. 2007;25:2434-2441.
86. Fermand JP, Alberti C, Marolleau JP. Single versus tandem high dose therapy (HDT) supported with autologous blood stem cell (ABSC) transplantation using unselected or CD34-enriched ABSC: results of a two by two designed randomized trial in 230 young patients with multiple myeloma (MM) [abstract P10.2.2]. *Hematol J*. 2003;4(suppl 1):S59.
87. Goldschmidt H. Single vs. tandem autologous transplantation in multiple myeloma: the GMMG experience [abstract]. *Hematol J*. 2003;4(suppl 1):S61.
88. Krishnan A, Pasquini MC, Logan B, et al; Blood Marrow Transplant Clinical Trials Network (BMT CTN). Autologous haemopoietic stem-cell transplantation followed by allogeneic or autologous haemopoietic stem-cell transplantation in patients with multiple myeloma (BMT CTN 0102): a phase 3 biological assignment trial. *Lancet Oncol*. 2011;12(13):1195-1203.
89. Bruno B, Rotta M, Patriarca F, et al. A comparison of allografting with autografting for newly diagnosed myeloma. *N Engl J Med*. 2007;356(11):1110-1120.
90. Attal M, Harousseau J-L, Leyvraz S, et al; Inter-Group Francophone du Myélome (IFM). Maintenance therapy with thalidomide improves survival in patients with multiple myeloma. *Blood*. 2006;108(10):3289-3294.
91. Spencer A, Prince HM, Roberts AW, et al. Consolidation therapy with low-dose thalidomide and prednisolone prolongs the survival of multiple myeloma patients undergoing a single autologous stem-cell transplantation procedure. *J Clin Oncol*. 2009;27(11):1788-1793.
92. Attal M, Lauwers-Cances V, Marit G, et al; IFM Investigators. Lenalidomide maintenance after stem-cell transplantation for multiple myeloma. *N Engl J Med*. 2012;366(19):1782-1791.
93. McCarthy PL, Owzar K, Hofmeister CC, et al. Lenalidomide after stem-cell transplantation for multiple myeloma. *N Engl J Med*. 2012;366(19):1770-1781.
94. Rajkumar SV, Gahrton G, Bergsagel PL. Approach to the treatment of multiple myeloma: a clash of philosophies. *Blood*. 2011;118(12):3205-3211.
95. Rajkumar SV. Haematological cancer: lenalidomide maintenance—perils of a premature denouement. *Nat Rev Clin Oncol*. 2012;9(7):372-374.
96. Nooka AK, Kaufman JL, Muppidi S, et al. Consolidation and maintenance therapy with lenalidomide, bortezomib and dexamethasone (RVD) in high-risk myeloma patients. *Leukemia*. 2014;28(3):690-693.
97. Palumbo A, Hajek R, Delforge M, et al; MM-015 Investigators. Continuous lenalidomide treatment for newly diagnosed multiple myeloma [published correction appears in *N Engl J Med*. 2012;367(3):285]. *N Engl J Med*. 2012;366(19):1759-1769.
98. Gertz MA, Lacy MQ, Inwards DJ, et al. Early harvest and late transplantation as an effective therapeutic strategy in multiple myeloma. *Bone Marrow Transplant*. 1999;23(3):221-226.
99. Kumar SK, Therneau TM, Gertz MA, et al. Clinical course of patients with relapsed multiple myeloma. *Mayo Clin Proc*. 2004;79(7):867-874.
100. Dimopoulos M, Spencer A, Attal M, et al; Multiple Myeloma (010) Study Investigators. Lenalidomide plus dexamethasone for relapsed or refractory multiple myeloma [published correction appears in *N Engl J Med*. 2009;361(5):544]. *N Engl J Med*. 2007;357(21):2123-2132.
101. Weber DM, Chen C, Niesvizky R, et al; Multiple Myeloma (009) Study Investigators. Lenalidomide plus dexamethasone for relapsed multiple myeloma in North America. *N Engl J Med*. 2007;357(21):2133-2142.
102. Pineda-Roman M, Zangari M, van Rhee F, et al. VTD combination therapy with bortezomib-thalidomide-dexamethasone is highly effective in advanced and refractory multiple myeloma. *Leukemia*. 2008;22(7):1419-1427.
103. Richardson PG, Weller E, Jagannath S, et al. Multicenter, phase I, dose-escalation trial of lenalidomide plus bortezomib for relapsed and relapsed/refractory multiple myeloma. *J Clin Oncol*. 2009;27(34):5713-5719.
104. Richardson PG, Xie W, Jagannath S, et al. A phase 2 trial of lenalidomide, bortezomib, and dexamethasone in patients with relapsed and relapsed/refractory myeloma. *Blood*. 2014;123(10):1461-1469.
105. Stewart AK, Rajkumar SV, Dimopoulos MA, et al; ASPIRE Investigators. Carfilzomib, lenalidomide, and dexamethasone for relapsed multiple myeloma. *N Engl J Med*. 2015;372(2):142-152.
106. Lacy MQ, Hayman SR, Gertz MA, et al. Pomalidomide (CC4047) plus low-dose dexamethasone as therapy for relapsed multiple myeloma. *J Clin Oncol*. 2009;27(30):5008-5014.
107. Lacy MQ, Hayman SR, Gertz MA, et al. Pomalidomide (CC4047) plus low dose dexamethasone (Pom/dex) is active and well tolerated in lenalidomide refractory multiple myeloma (MM). *Leukemia*. 2010;24(11):1934-1939.
108. Lacy MQ, Allred JB, Gertz MA, et al. Pomalidomide plus low-dose dexamethasone in myeloma refractory to both bortezomib and lenalidomide: comparison of 2 dosing strategies in dual-refractory disease. *Blood*. 2011;118(11):2970-2975.
109. San Miguel J, Weisel K, Moreau P, et al. Pomalidomide plus low-dose dexamethasone versus high-dose dexamethasone alone for patients with relapsed and refractory multiple myeloma (MM-003): a randomised, open-label, phase 3 trial. *Lancet Oncol*. 2013;14(11):1055-1066.
110. San-Miguel JF, Hungria VTM, Yoon S-S, et al. Panobinostat plus bortezomib and dexamethasone versus placebo plus bortezomib and dexamethasone in patients with relapsed or relapsed and refractory multiple myeloma: a multicentre, randomised, double-blind phase 3 trial [published correction appears in *Lancet Oncol*. 2015;16(1):e6]. *Lancet Oncol*. 2014;15(11):1195-1206.
111. Hideshima T, Bradner JE, Wong J, et al. Small-molecule inhibition of proteasome and aggresome function induces synergistic antitumor activity in multiple myeloma. *Proc Natl Acad Sci U S A*. 2005;102(24):8567-8572.
112. San-Miguel JF, Richardson PG, Günther A, et al. Phase Ib study of panobinostat and bortezomib in relapsed or relapsed and refractory multiple myeloma. *J Clin Oncol*. 2013;31(29):3696-3703.
113. Orlowski RZ, Nagler A, Sonneveld P, et al. Randomized phase III study of pegylated liposomal doxorubicin plus bortezomib compared with bortezomib alone in relapsed or refractory

- multiple myeloma: combination therapy improves time to progression. *J Clin Oncol*. 2007;25(25):3892-3901.
114. Lonial S, Weiss BM, Usmani SZ, et al. Phase II study of daratumumab (DARA) monotherapy in patients with ≥ 3 lines of prior therapy or double refractory multiple myeloma (MM): 54767414MMY2002 (Sirius) [abstract]. *J Clin Oncol*. 2015;33(15, suppl):LB8512.
115. Lonial S, Dimopoulos M, Palumbo A, et al; ELOQUENT-2 Investigators. Elotuzumab therapy for relapsed or refractory multiple myeloma. *N Engl J Med*. 2015;373(7):621-631.
116. Moreau P, Masszi T, Grzasko N, et al. Ixazomib, an investigational oral proteasome inhibitor (PI), in combination with lenalidomide and dexamethasone (IRd), significantly extends progression-free survival (PFS) for patients (Pts) with relapsed and/or refractory multiple myeloma (RRMM): the phase 3 Tourmaline-MM1 Study (NCT01564537) [ASH Annual Meeting Abstracts 2015, abstract 727]. American Society of Hematology website. <https://ash.confex.com/ash/2015/webprogram/Paper79829.html>. Accessed November 11, 2015.
117. Gucaip R, Theriault R, Gill I, et al. Treatment of cancer-associated hypercalcemia: double-blind comparison of rapid and slow intravenous infusion regimens of pamidronate disodium and saline alone. *Arch Intern Med*. 1994;154(17):1935-1944.
118. Major P, Lortholary A, Hon J, et al. Zoledronic acid is superior to pamidronate in the treatment of hypercalcemia of malignancy: a pooled analysis of two randomized, controlled clinical trials. *J Clin Oncol*. 2001;19(2):558-567.
119. Berenson JR, Lichtenstein A, Porter L, et al; Myeloma Aredia Study Group. Efficacy of pamidronate in reducing skeletal events in patients with advanced multiple myeloma. Myeloma Aredia Study Group [see comments]. *N Engl J Med*. 1996;334(8):488-493.
120. Berenson JR, Rosen LS, Howell A, et al. Zoledronic acid reduces skeletal-related events in patients with osteolytic metastases [published correction appears in *Cancer*. 2001;91(10):1956]. *Cancer*. 2001;91(7):1191-1200.
121. Rosen LS, Gordon D, Kaminski M, et al. Zoledronic acid versus pamidronate in the treatment of skeletal metastases in patients with breast cancer or osteolytic lesions of multiple myeloma: a phase III, double blind, comparative trial. *Cancer J*. 2001;7(5):377-387.
122. Berenson JR, Hillner BE, Kyle RA, et al; American Society of Clinical Oncology Bisphosphonates Expert Panel. American Society of Clinical Oncology clinical practice guidelines: the role of bisphosphonates in multiple myeloma. *J Clin Oncol*. 2002;20(17):3719-3736.
123. Morgan GJ, Davies FE, Gregory WM, et al; National Cancer Research Institute Haematological Oncology Clinical Study Group. First-line treatment with zoledronic acid as compared with clodronic acid in multiple myeloma (MRC Myeloma IX): a randomised controlled trial. *Lancet*. 2010;376(9757):1989-1999.
124. Fournier DR, Schomer DF, Nader R, et al. Percutaneous vertebroplasty and kyphoplasty for painful vertebral body fractures in cancer patients. *J Neurosurg*. 2003;98(1 suppl):21-30.
125. Vesole DH, Oken MM, Heckler C, et al; University of Rochester Cancer Center and the Eastern Cooperative Oncology Group. Oral antibiotic prophylaxis of early infection in multiple myeloma: a URCC/ECOG randomized phase III study. *Leukemia*. 2012;26(12):2517-2520.
126. Oken MM, Pomeroy C, Weisdorf D, Bennett JM. Prophylactic antibiotics for the prevention of early infection in multiple myeloma. *Am J Med*. 1996;100(6):624-628.
127. Gertz MA, Kyle RA. Hyperviscosity syndrome. *J Intensive Care Med*. 1995;10(3):128-141.
128. Rajkumar SV, Landgren O, Mateos MV. Smoldering multiple myeloma. *Blood*. 2015;125(20):3069-3075.
129. Hjorth M, Hellquist L, Holmberg E, Magnusson B, Rödger S, Westin J. Initial versus deferred melphalan-prednisone therapy for asymptomatic multiple myeloma stage I—a randomized study. *Eur J Haematol*. 1993;50(2):95-102.
130. Grignani G, Gobbi PG, Formisano R, et al. A prognostic index for multiple myeloma. *Br J Cancer*. 1996;73(9):1101-1107.
131. Mateos M-V, Hernández M-T, Giraldo P, et al. Lenalidomide plus dexamethasone for high-risk smoldering multiple myeloma. *N Engl J Med*. 2013;369(5):438-447.