



Adult obstructive sleep apnoea

Amy S Jordan, David G McSharry, Atul Malhotra

Lancet 2014; 383: 736–47

Published Online

August 2, 2013

[http://dx.doi.org/10.1016/S0140-6736\(13\)60734-5](http://dx.doi.org/10.1016/S0140-6736(13)60734-5)

See Online for a podcast interview with Amy S Jordan

University of Melbourne, Melbourne, VIC, Australia (A S Jordan PhD); Institute for Breathing and Sleep, Melbourne, VIC, Australia (A S Jordan); Brigham and Women's Hospital and Harvard Medical School, Boston, MA, USA (D G McSharry MB, Prof A Malhotra MD); University of California, San Diego, CA, USA (Prof A Malhotra); and Letterkenny General Hospital, County Donegal, Ireland (D G McSharry)

Correspondence to:

Dr Amy S Jordan, Melbourne School of Psychological Sciences, The University of Melbourne, Parkville, VIC 3010, Australia
ajordan@unimelb.edu.au

Obstructive sleep apnoea is an increasingly common disorder of repeated upper airway collapse during sleep, leading to oxygen desaturation and disrupted sleep. Features include snoring, witnessed apnoeas, and sleepiness. Pathogenesis varies; predisposing factors include small upper airway lumen, unstable respiratory control, low arousal threshold, small lung volume, and dysfunctional upper airway dilator muscles. Risk factors include obesity, male sex, age, menopause, fluid retention, adenotonsillar hypertrophy, and smoking. Obstructive sleep apnoea causes sleepiness, road traffic accidents, and probably systemic hypertension. It has also been linked to myocardial infarction, congestive heart failure, stroke, and diabetes mellitus though not definitively. Continuous positive airway pressure is the treatment of choice, with adherence of 60–70%. Bi-level positive airway pressure or adaptive servo-ventilation can be used for patients who are intolerant to continuous positive airway pressure. Other treatments include dental devices, surgery, and weight loss.

Introduction

Obstructive sleep apnoea is a common disorder of repetitive pharyngeal collapse during sleep.¹ Pharyngeal collapse could be complete (causing apnoea) or partial (causing hypopnoea). Disturbances in gas exchange lead to oxygen desaturation, hypercapnia, and sleep fragmentation, which contribute to the consequences of obstructive sleep apnoea—eg, cardiovascular, metabolic, and neurocognitive effects. Although several treatments exist, they are often either poorly tolerated or only partially alleviate abnormalities. Thus, improvement of patient adherence to existing treatments and development of new treatments (or combinations of treatments) are needed. In view of the obesity pandemic, the propensity for pharyngeal collapse and therefore the number of cases of obstructive sleep apnoea are likely to rise.

The landmark study investigating the prevalence of obstructive sleep apnoea was the 1993 Wisconsin Sleep Cohort Study.² This study reported that the prevalence of obstructive sleep apnoea—defined as more than five apnoeas or hypopnoeas per h of sleep plus excessive daytime sleepiness—was 4% in middle-aged men and 2% in middle-aged women (age 30–60 years). Subsequent studies suggest that prevalence in high-income countries is higher than previously reported (10% in women and 20% in men),^{3,4} perhaps a result of worsening obesity and improving technology over time.⁵ Obstructive sleep apnoea is a global health problem; Brazil and several Asian countries have the same, if not higher, prevalence as the USA and Europe, despite less overall obesity.^{6,7}

Diagnosis and definitions

Patients with obstructive sleep apnoea report snoring, witnessed apnoeas, waking up with a choking sensation, and excessive sleepiness.¹ Other common symptoms are non-restorative sleep, difficulty initiating or maintaining sleep, fatigue or tiredness, and morning headache.⁸ Indicators include a family history of the disease or physical attributes suggestive of obstructive sleep apnoea—eg, a small oropharyngeal airway or markers of obesity (eg, large neck circumference).⁹

The best test for obstructive sleep apnoea is overnight polysomnography in a laboratory with the primary outcome measure of apnoea–hypopnoea index (number of apnoeas plus hypopnoeas per h of sleep). This test involves concurrent monitoring of both sleep and respiration (figures 1, 2). To monitor sleep–wake state, electroencephalogram, left and right electro-oculogram, and chin electromyogram are recorded. The respiratory recordings should include: respiratory effort measurement (eg, respiratory inductance plethysmography bands placed around the thorax and abdomen), airflow monitoring by nasal air pressure and thermal air sensor, and arterial oxygen saturation. Electromyography of the anterior tibialis is also often done to assess limb movements that might alter sleep stage or respiration and body position is monitored because of the position-specific nature of obstructive sleep apnoea in many patients (figure 1).

Table 1 shows the characteristics of each stage of sleep and arousals, and table 2 shows the criteria for respiratory events. Several definitions of hypopnoea exist and can lead to different values for apnoea–hypopnoea index between laboratories. Ruehland and colleagues¹⁰ showed that apnoea–hypopnoea index could be reckoned as 25·1, 8·3, or 14·9 using three different criteria. Definitions of respiratory events are based on consensus,¹¹ although different criteria are used around the world. Variability of definitions can affect patients (eg, the reported severity can affect eligibility for government-funded treatment) and interpretation of research studies. Although standardised definitions might improve consistency and reproducibility,¹² fixed definitions of apnoea–hypopnoea index might also have limitations. Because obstructive sleep apnoea has different effects on different organ systems, one fixed definition is unlikely to predict all negative outcomes. For example, the different consequences of obstructive sleep apnoea are best predicted with different components of the polysomnography (eg, desaturations by 4% or more in pulse oximetry can best predict hypertension,¹³ while desaturations of 2% can predict fasting hyperglycaemia,^{14,15} and the frequency of arousals can predict impaired memory consolidation¹⁶).

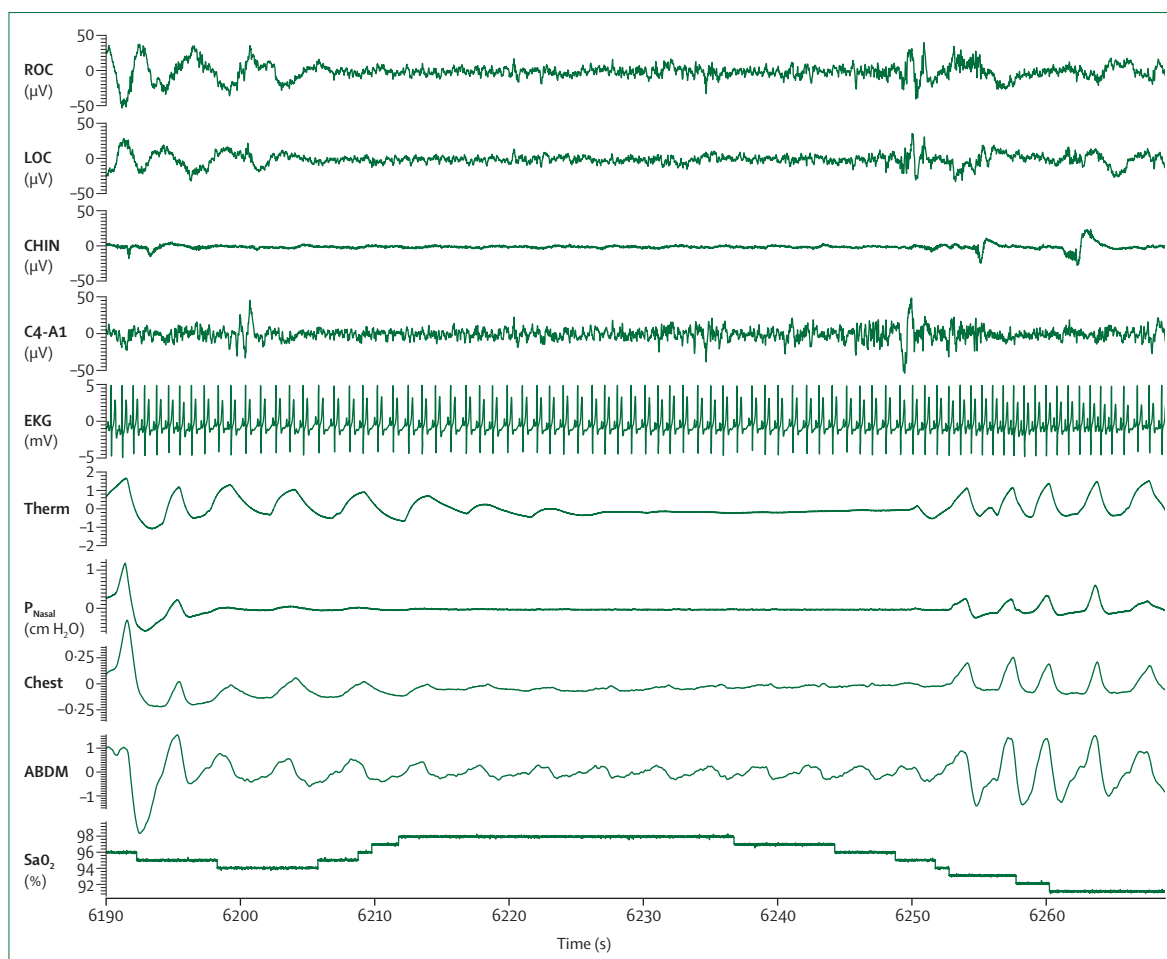


Figure 1: An example of the signals recorded during overnight polysomnography

Shows an obstructive apnoea with cessation of airflow for more than 10 s despite persistent respiratory efforts shown on the chest and abdominal respiratory bands. The apnoea is associated with arterial oxygen desaturation and is terminated by arousal from sleep. C4-A1=electroencephalogram. LOC=left electro-oculogram. ROC=right electro-oculogram. CHIN=chin electromyogram. CHEST=respiratory inductance plethysmography bands placed around the thorax. ABDM=respiratory inductance plethysmography bands placed around the abdomen. P_{Nasal} =airflow monitoring by nasal air pressure. Therm=airflow monitoring by thermal air sensor. SaO_2 =arterial oxygen saturation. EKG=electrocardiogram.

Thus, different definitions of hypopnoea might predict different consequences of obstructive sleep apnoea. Measurement of nasal pressure is a recent addition to polysomnography. Because nasal pressure is more sensitive than thermistor for detection of hypopnoeas, the reported apnoea–hypopnoea index (and perhaps the normal range) increases accordingly. Thus, doctors should be aware that subtle differences between laboratories might have a major effect on the reported apnoea–hypopnoea index.

Although polysomnography is usually definitive, the procedure is cumbersome, expensive, and time consuming. Thus, home diagnosis and management has been increasingly investigated. Randomised controlled trials^{17–20} have shown that home-based diagnosis and treatment are no worse than laboratory diagnosis and treatment for some patients. All major studies excluded potentially complicated patients (eg, those with lung

disease, heart failure, or neuromuscular disease), emphasising that home testing is not appropriate for all patients. However, for some patients, carefully designed home management procedures can provide timely and cost-effective management of obstructive sleep apnoea.¹⁷ Ongoing studies focusing on clinical outcomes will help to define optimum management of obstructive sleep apnoea.

Pathophysiology and risk factors

Traditionally, obstructive sleep apnoea was considered to be primarily a problem of upper airway anatomy, where craniofacial structure or body fat decreased the size of the pharyngeal airway lumen, leading to an increased likelihood of pharyngeal collapse.²¹ During wakefulness, the airway is held open by the high activity of the numerous upper airway dilator muscles, but after the onset of sleep, when muscle activity is reduced, the airway collapses.^{22,23} Although this sequence probably occurs in

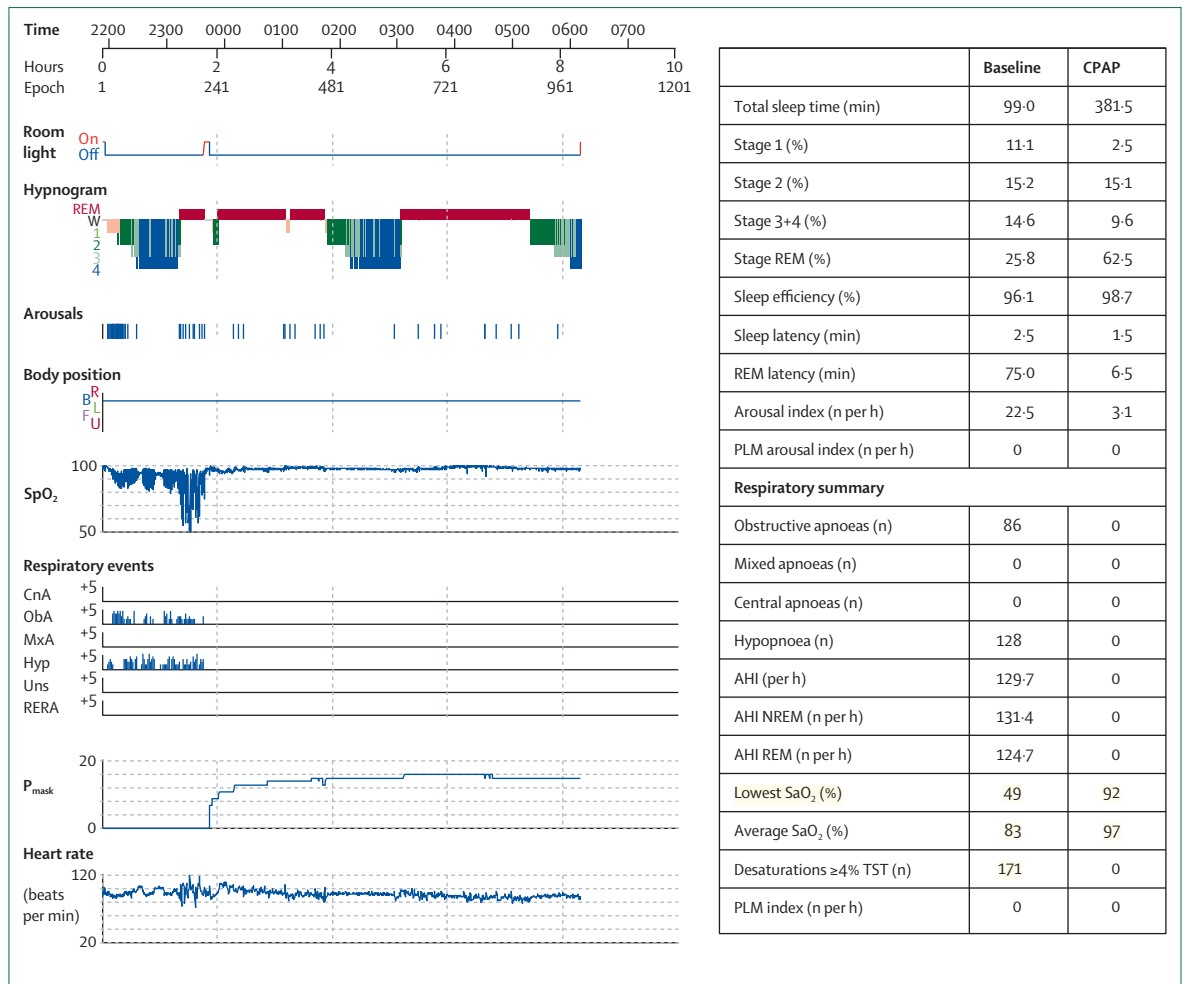


Figure 2: An example summary report from an overnight split night polysomnography

Total time in bed was 489.5 min. Half of the night was diagnostic, half therapeutic. The hypnogram shows sleep stages throughout the night. Shortly before midnight, continuous positive airway pressure was started (P_{mask} increases from 0), which was followed by elimination of respiratory events, normalisation of arterial oxygen saturation, and REM rebound (>2 h of REM). Sleep efficiency is the proportion of time in bed spent asleep after lights out. Sleep latency is the time from lights out until the first epoch of sleep. REM latency is the time from lights out until the first epoch of REM. An epoch is a time window of 30 s. CnA=central apnoea. ObA=obstructive apnoea. MxA=mixed apnoea. Hyp=hypnoea. Uns=unclear events. RERA=respiratory event related arousal. PLM=periodic limb movement. TST=total sleep time. REM=rapid eye movement. W=awake. NREM=non-rapid eye movement. R=right. B=back. L=left. F=front. U=upright. AHI=apnoea-hypopnoea index. On the hypnogram, 1, 2, and 3 represent NREM stages 1, 2, and 3.

obstructive sleep apnoea, several other factors also contribute (figure 3).²⁴ The importance of these non-anatomical and non-neuromuscular factors is shown by patients with apparently normal upper airway anatomy and very responsive or active upper airway dilator muscles who still develop obstructive sleep apnoea.²⁵

One important variable is the stability of the respiratory control system. When the central respiratory output waxes and wanes, the activity of the upper airway dilator muscles varies accordingly so that periods of low central respiratory drive are associated with low upper airway dilator muscle activity, high airway resistance, and a predisposition to airway collapse.^{26,27} Thus, respiratory control instability (also known as high loop gain) is probably a causative factor for obstructive sleep apnoea in some patients.^{25,28}

Another potentially important factor is the propensity to arouse from sleep (the arousal threshold).²⁹ After arousal, most people hyperventilate briefly and if the hyperventilation is large enough, CO₂ concentration in blood can fall below the chemical apnoea threshold, resulting in a central apnoea.³⁰ If hypocapnia is mild, respiratory drive is reduced to just below the eupnoeic level when sleep resumes. Because the upper airway dilator muscles also receive respiratory input, hypocapnia is expected to reduce the activity of the upper airway dilator muscles and could lead to collapse of the airway. Arousals that halt respiratory events in obstructive sleep apnoea are typically associated with quite large hyperventilation because respiratory drive has risen substantially during the respiratory event,³⁰ causing

	EEG characteristics	Relevance to OSA	Normal amounts
Wake	Low voltage, mixed frequency when eyes are open or alert; α activity (8–13 Hz) while relaxed with eyes closed	Typically increased in OSA	15–20% of time in bed
N1	Predominantly low amplitude and relatively fast θ activity (3–7 Hz) accompanied by slow rolling-type eye movements	Typically increased in OSA	4–6%, more in older patients
N2	Sleep spindles (12–14 Hz bursts lasting >0.5 s) and K complexes (large negative EEG wave followed immediately by a slower positive wave) on a background of low voltage, mixed frequency EEG	Typically increased in OSA	50–65%, more in older patients
N3	Slow (<2 Hz), high amplitude (>75 μ V) EEG waves for more than half the epoch	Often absent or reduced in OSA, but associated with improved severity or complete absence of OSA when present	15–20%, less in older patients
REM	Low voltage, mixed frequency EEG with periodic runs of sawtooth waves accompanied by irregular movements of both eyes and low muscle tone	Often absent or reduced in OSA; often accompanied by worsening of respiratory events and more pronounced desaturation than the non-REM stages	15–20%
Arousals	3–15 s return of waking or faster activity in the EEG; concurrent increase in EMG must be recorded in REM sleep	Commonly occur at the end of respiratory events, but also occur spontaneously or as a result of other stimuli (eg, leg movements)	20 per h of sleep

According to AASM scoring manual. REM=rapid eye movement. OSA=obstructive sleep apnoea. EEG=electroencephalogram. EMG=electromyogram.

Table 1: Adult sleep staging and arousal scoring

hypocapnia in at least some patients. Individuals with low arousal thresholds might also arouse before the dilator muscles are able to reopen the airway. In such cases, delay of arousal with non-myorelaxant sedatives might help to treat the condition if the upper airway muscles are sufficiently responsive to respiratory stimuli to stabilise the airway before arousal.³¹ Care must be taken with this approach, because sedatives can prolong respiratory events in some patients (those who cannot re-open the airway without arousal).

Lung volume might also be a causative factor.^{32,33} In animals and man, the cross-sectional area of the upper airway increases when lung volume increases (either naturally or with passive increases in functional residual capacity). Conversely, the airway is smaller and collapses more easily when lung volume is small.³⁴ This relation probably exists because the lower and upper airways are mechanically linked,³⁵ so that with increased lung volumes, the mediastinal structures are pulled caudally, resulting in stiffening and dilation of the pharyngeal airway. Increased lung volume also probably stabilises the respiratory control system by increasing the stores of O₂ and CO₂ and thus, buffering the blood gases from changes in ventilation.³⁶ Functional residual capacity falls between waking and sleeping in normal-weight individuals³⁷ and is therefore presumed to contribute to the sleep-related collapse in obstructive sleep apnoea.^{33,38,39} However, even when awake, obesity often reduces functional residual capacity to residual volume, particularly when in the supine position.⁴⁰ Therefore, whether lung volume falls further between wake and sleep in obese patients with obstructive sleep apnoea remains unclear.

Any factors that impair the upper airway anatomy or muscle function—eg, dysfunctional upper airway dilating muscles—will also predispose to obstructive sleep apnoea.⁴¹ The largest and most commonly studied

	Definition
Apnoea	Airflow reduced to less than 10% of baseline for more than 10 s; obstructive if respiratory effort is present, central if no respiratory effort is present
Hypopnoea (recommended definition)	Airflow reduced to less than 30% of baseline for more than 10 s, in association with a 4% oxygen desaturation
Hypopnoea (alternative definition)	Airflow reduced to less than 50% of baseline for more than 10 s, in association with a 3% oxygen desaturation or an arousal from sleep
Respiratory effort related arousal	Sequence of breaths lasting more than 10 s that do not meet the standard hypopnoea definition but that are characterised by high upper-airway resistance (snoring and flattened inspiratory nasal pressure signal) and that terminate in arousal from sleep

According to AASM scoring manual.

Table 2: Adult respiratory event scoring

airway dilator muscle is the genioglossus, which constitutes most of the tongue. Adequate contraction of the genioglossus seems to be necessary and sufficient to keep the upper airway open during sleep.⁴² Fatigue, neural injury, and myopathy might cause the genioglossus to malfunction in people with obstructive sleep apnoea.^{43–45} Pharyngeal sensory impairment might also contribute to collapse of the upper airway.^{46,47}

Fluid retention and shift of fluid overnight from the legs to the neck might also affect airway mechanics. Oedema can be especially problematic in states of excess extracellular fluid volume—eg, heart failure, end-stage renal disease, and hypertension.⁴⁸ Treatment with diuretics or mechanical methods to redistribute fluid yields some improvement in obstructive sleep apnoea.^{49,50} Accumulation of fluid might narrow the pharyngeal airway lumen and could be a therapeutic target for at least some patients.

Being male and obese are major risk factors for obstructive sleep apnoea. Obesity could increase the

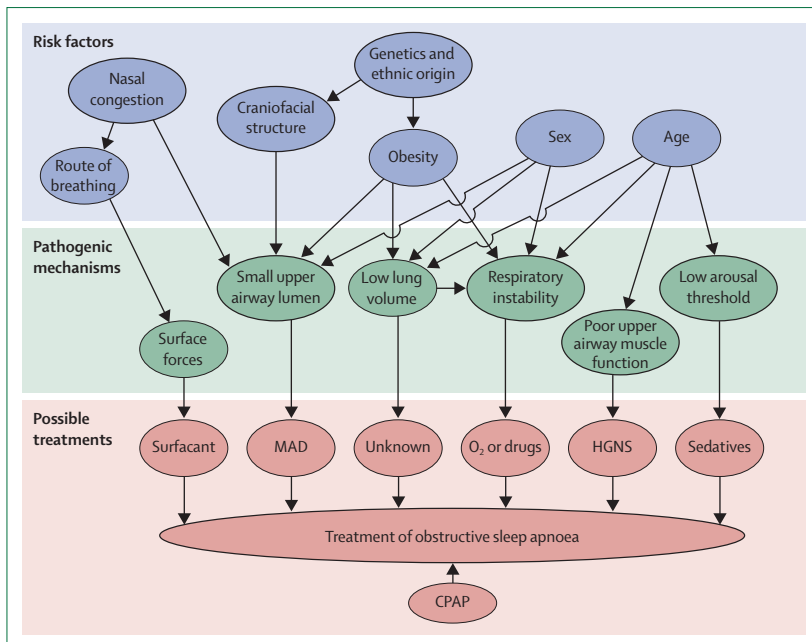


Figure 3: Risk factors, pathogenic mechanisms, and possible treatments for obstructive sleep apnoea

Risk factors for obstructive sleep apnoea probably act through one or more pathogenic mechanisms. One or two of the pathogenic mechanism might predominate in each patient and give rise to the disorder. Although CPAP treats obstructive sleep apnoea irrespective of underlying cause, treatments based on tackling individual pathogenic mechanisms might prove a successful alternative approach—eg, fluid accumulation outside the airway could make the upper airway lumen smaller and might respond to diuretic treatment. CPAP=continuous positive airway pressure. MAD=mandibular advancement device. HGNS=hypoglossal nerve stimulation.

likelihood of airway collapse by directly affecting the anatomy of upper airway as fat is deposited in surrounding structures.⁵¹ MRI studies suggest that fat is deposited within the tongue, which could impair function of the genioglossus muscle.⁵² However, obesity might also increase the risk of obstructive sleep apnoea via effects on lung volumes and therefore stability of respiratory control. How male sex predisposes to obstructive sleep apnoea is less clear.⁵³ Men tend to gain weight more centrally than do women, and this pattern probably results in men having more fat stored in upper airway structures and the abdomen than do women.⁵⁴ However, anatomical studies have shown that men tend to have larger or similar size pharyngeal airway cross-sectional areas than do women, suggesting that differences in fat deposition might not greatly impair airway anatomy. Several studies⁵⁵ suggest that the airway is longer in men than in women, independent of body height, which could explain the increased propensity for airway collapse in men. The passive pharyngeal airway collapsing pressure provides an overall measure of the anatomy of the upper airway that accounts for all anatomical measures and their interactions, but it does not account for neuromuscular reflexes.^{55,56} The passive pharyngeal airway collapsing pressure is generally higher in men than in women for any given body-mass index, suggesting that generally, anatomical factors predispose men to pharyngeal collapse more than

women. Women also have better respiratory load responses than do men (eg, higher minute ventilation during inspiratory resistive loading).^{57,58} Finally, the more central fat distribution in men might reduce lung volumes for a given body-mass index.

Age is another major risk factor.⁵⁹ Older individuals might have reduced tethering of the upper airway by lung volume because of loss of elastic recoil in the lung. They might also have a more easily collapsible airway caused by loss of collagen or a reduced arousal threshold caused by poorer quality of sleep. Finally, the efficiency of the upper airway dilator muscles might fall with age.^{60–62}

Additional risk factors for the development of obstructive sleep apnoea include genetic factors and race, which affect craniofacial anatomy, obesity, and perhaps lung volume. Menopause—independent of age and body-mass index—is also a risk factor. Menopause could be related to redistribution of body fat to central regions and loss of lean muscle mass (with a proportionate increase in fat mass). Finally, smoking is also commonly linked with obstructive sleep apnoea. Although the exact mechanisms of this association are not clear,⁴ they might include increased inflammation of the upper airway, nasal stuffiness, reduced airway sensation, and reduced arousal threshold or frequent arousals because of unstable sleep. A more complete understanding of the pathogenesis of obstructive sleep apnoea and its risk factors could lead to new means to treat or prevent the disease.

Consequences

Randomised trials have shown that obstructive sleep apnoea causes sleepiness based on significant improvements in symptoms with continuous positive airway pressure compared with controls.⁶³ People with obstructive sleep apnoea are more likely to have motor vehicle accidents (perhaps up to seven-times as many as those without the disease⁶⁴). This risk might be mitigated, at least in part, by treatment.⁶⁵ Obstructive sleep apnoea also affects quality of life and different aspects of health domains with improvements noted after treatment with continuous positive airway pressure, particularly in adherent patients.¹

Obstructive sleep apnoea leads to systemic hypertension,⁶⁶ as shown by animal studies (showing increased systemic blood pressure with induction of sleep apnoea, which resolves with relief of apnoea),⁶⁷ large cross-sectional and longitudinal epidemiological studies,^{68,69} and several randomised trials⁷⁰ showing that treatment for obstructive sleep apnoea reduces systemic blood pressure. Treatment with continuous positive airway pressure seems to reduce blood pressure, although only by 2–3 mm Hg, and less than the reductions gained by treatment with anti-hypertensive drugs.⁷¹ However, continuous positive airway pressure improves symptoms in addition to hypertension.⁷² Results of meta-analyses^{70,73} have defined predictors of improvement in blood pressure after continuous positive

airway pressure, including adherence, young age, baseline blood pressure (ie, blood pressure can fall greatly in hypertensive patients), daytime sleepiness (ie, larger falls in sleeper patients), and severity of obstructive sleep apnoea. However, proponents of theories on central regulation of blood pressure would argue that large changes in blood pressure are unlikely to occur if continuous positive airway pressure simply reduced vasoconstriction;⁷⁴ various counter-regulatory mechanisms (eg, baroreflexes) would stabilise blood pressure, at least in the short term. Nonetheless, some patients given continuous positive airway pressure do have large improvements in blood pressure as well as reductions in surges in nocturnal blood pressure associated with obstructive sleep apnoea. However, this link is still controversial; some studies have shown that the connection between obstructive sleep apnoea and hypertension is weak when covariates are adequately considered.⁷⁵⁻⁷⁷

The relation between hard cardiovascular outcomes and obstructive sleep apnoea is unproven.⁷⁸ Marin and colleagues⁷⁹ reported results of a prospective observational cohort study in which severe untreated obstructive sleep apnoea was associated with an increased incidence of both fatal and non-fatal cardiovascular events compared with patients with treated obstructive sleep apnoea and various control groups. Although these data accord with the idea that treatment of obstructive sleep apnoea prevents cardiovascular events, the result might be caused by a treatment bias—ie, patients who adhere to continuous positive airway pressure might also be motivated to adhere to diet and exercise advice and to adhere to drugs.⁸⁰ Other epidemiological studies^{72,81} have linked obstructive sleep apnoea with myocardial infarction, congestive heart failure, and stroke. Post-hoc subgroup analyses suggest that obstructive sleep apnoea has a bigger effect on cardiovascular outcomes in young men compared with old men. Asymptomatic patients often do not adhere to treatment and so do not improve much in randomised trials. Several observational studies have assessed the effect of obstructive sleep apnoea on overall mortality and cancer risk, although large, controlled, randomised trials are needed to draw definitive conclusions.^{82,83}

No clear data show that continuous positive airway pressure prevents myocardial infarction, congestive heart failure, or stroke, although this topic is being investigated.^{72,78} Among patients with heart failure, continuous positive airway pressure improves cardiac function, although the existing studies are small.⁸⁴ To show that obstructive sleep apnoea increases the chance of cardiovascular events, studies in high-risk patients are needed. Assessing changes in surrogate outcome measures or biomarkers might also be informative.⁸⁵

Obstructive sleep apnoea has been linked with diabetes mellitus. Foster and colleagues^{5,86} showed that 87% of obese patients with type 2 diabetes had clinically important obstructive sleep apnoea, although because obesity is a

common risk factor for both obstructive sleep apnoea and diabetes mellitus, the association could simply be a correlation. Diabetes can lead to neuromyopathy, which might impair reflexes in the upper airway, increasing the likelihood of obstructive sleep apnoea.¹ However, few data support this contention. Furthermore, because of the release of counter-regulatory hormones during obstructive apnoea, glycaemic control might be expected to be worse in patients with diabetes if obstructive sleep apnoea is left untreated.^{87,88} However, most data show no major improvement in glycaemic control with treatment of obstructive sleep apnoea.⁸⁹ A potential explanation for this finding relates to adherence to continuous positive airway pressure. A study from India⁹⁰ showed improvement in metabolic syndrome in a setting where adherence to continuous positive airway pressure was high. Additionally, because standard of care in type 2 diabetes requires fairly good glycaemic control, the incremental benefits of continuous positive airway pressure beyond standard diabetes treatment might be small. Moreover, the interactions between obstructive sleep apnoea and obesity and their effects on glucose regulation are probably complex.^{91,92} Finally, obstructive sleep apnoea and diabetes mellitus could affect vascular function through different pathways,^{93,94} therefore treatment of obstructive sleep apnoea could improve vascular outcomes in diabetes. Standard therapeutic targets for diabetes—eg, hypercholesterolaemia, blood pressure, and glycaemic control—have probably been exploited as much as possible, suggesting the need for new therapeutic targets. Efforts are ongoing to assess the effect of continuous positive airway pressure in patients with diabetes.

Randomised controlled trials of continuous positive airway pressure are difficult to do for both ethical and logistical reasons.²² Symptomatic patients will benefit from continuous positive airway pressure, making long-term assignment to an untreated control group challenging. Conversely, adherence of asymptomatic patients is often poor, reducing any potential benefit of assignment to continuous positive airway pressure.^{72,95} Comparative effectiveness research might be feasible, in which two active treatments are compared to one another (eg, continuous positive airway pressure *vs* oral appliance);^{96,97} however, obtaining definitive data will require improved identification of patients likely to greatly benefit from continuous positive airway pressure (or combinations of treatments).

Management

Nasal continuous positive airway pressure is the treatment of choice for adults with obstructive sleep apnoea.⁹⁸ It was first reported as an effective means of preventing collapse of the pharyngeal airway in 1981.⁹⁹ The mechanism of continuous positive airway pressure is debated, but probably involves maintenance of a positive pharyngeal transmural pressure so that the intraluminal pressure exceeds the surrounding pressure.³³ Continuous

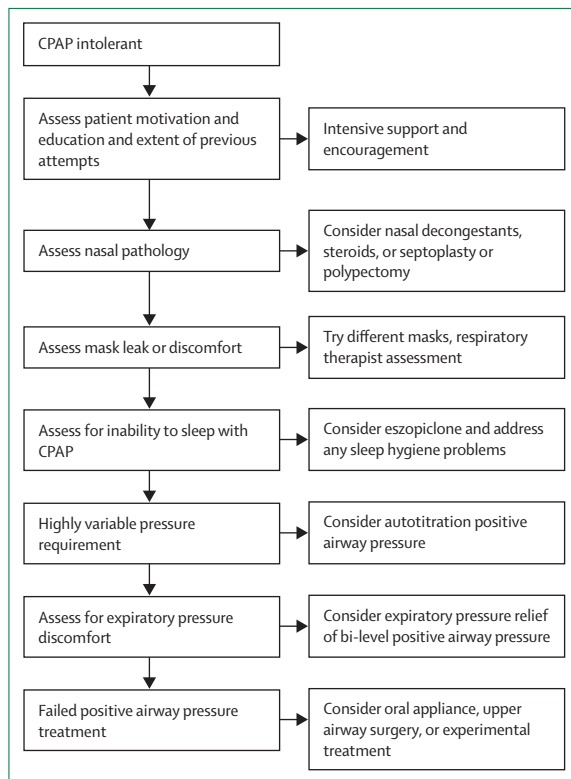


Figure 4: Suggested steps for management of patients struggling with CPAP. CPAP=continuous positive airway pressure.

positive airway pressure also increases end-expiratory lung volume, which stabilises the upper airway through caudal traction.¹⁰⁰ The decision to start treatment with continuous positive airway pressure should include a discussion with the patient about the potential alleviation of symptoms and possible cardiovascular protection.^{73,95,98} Continuous positive airway pressure has substantial benefits for some patients and adherence is roughly 60–70%, much the same as adherence to inhalers in patients with asthma, anti-convulsant drugs in those with epilepsy, and maintenance of good glycaemic control in diabetes.⁹⁸ It is also highly cost effective when considering its effects on neurocognitive and cardiovascular sequelae.¹⁰¹

Patients likely to maintain long-term adherence include those who snore heavily, have severe sleep apnoea, and have substantial excessive daytime sleepiness.^{102,103} Because short-term adherence and early perceived benefits are the best predictors of long-term adherence, efforts to optimise adherence are best done before or shortly after starting treatment.

Several points should be considered when managing patients who are struggling to adhere to continuous positive airway pressure (figure 4). First, intensive support can be beneficial according to some studies.¹⁰⁴ Education and support can improve adherence: patients who understand the benefits of treatment and who are

helped to troubleshoot difficulties are likely to respond favourably. Second, some patients have nasal difficulties that limit their ability to tolerate nasal treatment with continuous positive airway pressure. Nasal decongestants and heated humidification can be beneficial for such patients. In rare cases, nasal surgery can improve adherence. Third, although randomised trials have not shown one type of mask to be better than another, some patients prefer a full face mask to a nasal mask, while others prefer a nasal pillow device. Fourth, some patients respond to hypnotherapy if they develop insomnia or frequently wake when using continuous positive airway pressure.¹⁰⁵ Some data support the use of eszopiclone in patients who are starting continuous positive airway pressure. Our clinical experience suggests that consolidating sleep (stabilising or preventing fragmented sleep) can enable adherence so that hypnotherapy is no longer needed once the patient has habituated to the new equipment. Sedatives should be used cautiously in patients with obstructive sleep apnoea.

Several alternative options are available for patients in whom continuous positive airway pressure is unsuccessful. Bi-level positive airway pressure can be used (and might be preferred by some patients who have expiratory pressure discomfort), although randomised trials¹⁰⁶ have shown no major benefit compared with continuous positive airway pressure. Second, expiratory pressure relief strategies—eg, C-Flex (Philips Respironics; Murraysville, PA, USA) or EPR (Resmed; San Diego, CA, USA)—can improve discomfort during expiration in some patients. Most data¹⁰⁷ suggest that such treatments offer no major benefit compared with standard continuous positive airway pressure. Third, autotitration positive airway pressure has been used to vary pressure on an ad-hoc basis to maintain stable ventilation. Some patients who need different pressures to be applied (eg, based on body posture or sleep stage) might benefit from variable pressure devices that can lower the applied pressure when appropriate. However, most randomised trials¹⁰⁸ have shown no improvement in adherence with autotitration compared with standard continuous positive airway pressure. Some data¹⁰⁹ suggest that autotitration positive airway pressure worsens outcomes, seemingly because changes in intrathoracic pressure lead to arousal from sleep and haemodynamic instability. Thus, the data supporting new technologies to improve adherence are not compelling,¹¹⁰ but occasional benefits are seen in clinical practice.

For patients in whom positive airway pressure is unsuccessful, alternatives include oral devices, upper airway surgery, positional therapy, and other conservative measures. Different oral devices work in different ways but generally they apply pressure to the jaw to prevent retroglossal collapse. Oral devices are preferable to continuous positive airway pressure in some patients, particularly those with mild-to-moderate disease.^{111,112} However, the efficacy of oral devices varies and little data

on outcomes have been collected.^{113–116} One challenge with such devices is that several visits to a dentist are needed with satisfactory outcome difficult to judge until after 6–9 months of gradual titration. Although the device, plus repeated visits to the dentist, can be costly, oral devices are likely to be cost effective if they successfully treat obstructive sleep apnoea.

Some simple surgeries can be done to the soft palate (somnoplasty, laser-assisted uvulopalatopharyngoplasty), but the resulting improvements in symptoms are generally small at best. Fewer than 50% of patients have major improvements in apnoea–hypopnoea index with uvulopalatopharyngoplasty, therefore many doctors recommend against this procedure. However, because surgical procedures obviate the difficulties of patient adherence, some researchers recommend surgical treatments.^{117–120} Aggressive surgeries—eg, maxilla-mandibular advancement—are probably more effective than simple surgeries, but many patients would rather avoid major surgery for obstructive sleep apnoea. Tracheostomy eliminates obstructive sleep apnoea but it can substantially reduce quality of life. Prediction of which patients will respond to a particular procedure is poor at present, although research is ongoing.¹²¹ Experimental surgeries such as hypoglossal nerve stimulation are being studied, but definitive data are not available.^{122–124} Thus, further study is needed to define the best treatment for obstructive sleep apnoea.

Conservative measures can also be helpful. Avoidance of depressants including alcohol can be helpful since such substances can worsen symptoms. Sleeping for 7–8 h per night can reduce sleepiness. Avoidance of a supine posture can also help patients whose apnoea is caused by sleep position, although such patients often prefer continuous positive airway pressure to positional treatment.¹²⁵ Additionally, positional treatment can be difficult to monitor at home and thus, clinical outcomes are variable. Positional treatment can also be used in combination with other treatments when interventions such as oral devices or surgery give incomplete responses. Weight loss through diet and exercise can also be helpful.⁵ Few patients achieve long-term maintenance of reduced bodyweight, but education and support can be helpful. Some data¹²⁶ suggest that bodyweight increases after treatment with continuous positive airway pressure, emphasising the need for diet and exercise advice for all patients. Epidemiological data¹²⁷ suggest that exercise might have other benefits for obstructive sleep apnoea in addition to weight loss; however, the mechanism of this improvement is unclear. Similarly, neuromuscular exercises are beneficial for some patients,¹²⁸ although the data are not definitive.

Sleepiness persists in some patients despite good adherence to continuous positive airway pressure.^{129,130} The mechanism underlying this finding is unclear, but might result from consequences of apnoea that are irreversible. Such patients are managed supportively with efforts to improve adherence and sleep duration as

much as possible. Several randomised trials have been done to test the usefulness of stimulants such as modafinil to treat residual sleepiness in patients who adhere to continuous positive airway pressure. In most studies, patients benefit from stimulants, although some studies¹³¹ suggest that use of continuous positive airway pressure is compromised. Thus, patient education is important to emphasise that stimulants can provide an adjunctive treatment for sleepiness but do not treat the underlying apnoea: ongoing adherence to continuous positive airway pressure is needed.

Central apnoeas develop in roughly 10% of patients who start treatment with continuous positive airway pressure.¹³² These apnoeas are also known as complex apnoea and have been the subject of debate.¹³³ Although the mechanisms are unclear,¹³⁴ various theories have been suggested,¹³³ including lung stretch reflexes reducing ventilatory motor output, improvement in CO₂ clearance with relief of upper airway obstruction yielding a partial pressure of CO₂ below the chemical apnoea threshold, and reduction of anatomical deadspace by washout of CO₂ from the upper airway. Irrespective of the underlying mechanism, most results¹³⁴ suggest that these central apnoeas resolve spontaneously with ongoing continuous positive airway pressure treatment. Even so, some researchers advocate for the use of new devices—eg, adaptive servo-ventilation—to treat such apnoeas.¹³⁵ If breathing normalises spontaneously over time, then the use of expensive new devices might not be justified. Conversely, if a patient's first experience of continuous positive airway pressure treatment is unpleasant (perhaps because of repeated central apnoeas), then long-term adherence to treatment might be poor as a result.¹³⁵ Thus, early intervention to treat central apnoeas could improve long-term adherence to positive airway pressure. Treatment-emergent central apnoeas seem to have no effect on outcomes or long-term adherence¹³³ and thus, efforts at early intervention with new devices have been unsuccessful. As a result treatment-emergent central apnoea can be considered a minor problem.

Prevention

Although many risk factors for obstructive sleep apnoea are fixed, weight loss (though diet and exercise), and avoidance of cigarettes, alcohol, and other myorelaxant drugs can be beneficial.^{3,86} Results of a randomised controlled trial^{3,86} show that a 10 kg reduction in bodyweight can yield a reduction in apnoea–hypopnoea index of roughly five events per h. Obstructive sleep apnoea resolved in 63% of patients with mild disease, whereas only 13% of patients with severe obstructive sleep apnoea had remission. Although bariatric surgery is highly effective at causing weight loss, long-term elimination of apnoea varies.¹³⁶ Several studies^{40,137–140} have shown that obstructive sleep apnoea re-emerges or persists after surgical or non-surgical weight loss.

Future directions

Future treatments for obstructive sleep apnoea are likely to be targeted to the cause of disease since the disease occurs for different reasons in different patients (figure 3). For patients with a low arousal threshold, sedatives or hypnotics might be useful, whereas for patients with unstable ventilatory control, oxygen or acetazolamide might improve obstructive sleep apnoea.²⁸ Palate surgery will probably help patients with anatomical problems at the level of the velopharynx.¹⁴¹ For patients with upper airway muscle dysfunction, treatments such as hypoglossal nerve stimulation,¹²² muscle training exercises,¹²⁸ or strategies to increase hypoglossal output might be useful. For patients with multifactorial disease, combination treatment might be necessary. Further research into disease mechanisms should focus on new treatment strategies.²⁴ Ultimately, drugs might be developed to either block apnoea or attenuate its consequences.

Contributors

All authors wrote and edited the seminar. ASJ and AM made the figures.

Conflicts of interest

AM has received consulting and research income from Philips, Sleep Group Solutions, Pfizer, Apnex Medical, and Apnicure but has relinquished all outside personal income since May, 2012. DGM has received funding from the American Heart Association. ASJ is funded by the Australian Research Council and NHMRC Australia. Before 2010, she received consulting income from Apnex Medical.

References

- Malhotra A, White DP. Obstructive sleep apnoea. *Lancet* 2002; **360**: 237–45.
- Young T, Palta M, Dempsey J, Skatrud J, Weber S, Badr S. The occurrence of sleep-disordered breathing among middle-aged adults. *N Engl J Med* 1993; **32**: 1230–35.
- Sforza E, Chouchou F, Collet P, Pichot V, Barthelemy JC, Roche F. Sex differences in obstructive sleep apnoea in an elderly French population. *Eur Respir J* 2011; **37**: 1137–43.
- Peppard PE, Young T, Barnett JH, Palta M, Hagen EW, Hla KM. Increased prevalence of sleep-disordered breathing in adults. *Am J Epidemiol* 2013; **177**: 1006–14.
- Foster GD, Borradaile KE, Sanders MH, et al. A randomized study on the effect of weight loss on obstructive sleep apnea among obese patients with type 2 diabetes: the Sleep AHEAD study. *Arch Intern Med* 2009; **169**: 1619–26.
- Sharma SK, Ahluwalia G. Epidemiology of adult obstructive sleep apnoea syndrome in India. *Indian J Med Res* 2010; **131**: 171–75.
- Ip MS, Lam B, Laufer IJ, et al. A community study of sleep-disordered breathing in middle-aged Chinese men in Hong Kong. *Chest* 2001; **119**: 62–69.
- Chervin RD. Sleepiness, fatigue, tiredness, and lack of energy in obstructive sleep apnea. *Chest* 2000; **118**: 372–79.
- Davies RJ, Ali NJ, Stradling JR. Neck circumference and other clinical features in the diagnosis of the obstructive sleep apnoea syndrome. *Thorax* 1992; **47**: 101–05.
- Ruehlend WR, Rochford PD, O'Donoghue FJ, Pierce RJ, Singh P, Thornton AT. The new AASM criteria for scoring hypopneas: impact on the apnea hypopnea index. *Sleep* 2009; **32**: 150–57.
- Silber MH, Ancoli-Israel S, Bonnet MH, et al. The visual scoring of sleep in adults. *J Clin Sleep Med* 2007; **3**: 121–31.
- Grigg-Damberger MM. The AASM scoring manual four years later. *J Clin Sleep Med* 2012; **8**: 323–32.
- Foster GE, Hanly PJ, Ahmed SB, Beaudin AE, Pialoux V, Poulin MJ. Intermittent hypoxia increases arterial blood pressure in humans through a renin-angiotensin system-dependent mechanism. *Hypertension* 2010; **56**: 369–77.
- Lindberg E, Theorell-Haglow J, Svensson M, Gislason T, Berne C, Janson C. Sleep apnea and glucose metabolism: a long-term follow-up in a community-based sample. *Chest* 2012; **142**: 935–42.
- Stamatakis K, Sanders MH, Caffo B, et al. Fasting glycemia in sleep disordered breathing: lowering the threshold on oxyhemoglobin desaturation. *Sleep* 2008; **31**: 1018–24.
- Djonlagic I, Saboisky J, Carusona A, Stickgold R, Malhotra A. Increased sleep fragmentation leads to impaired off-line consolidation of motor memories in humans. *PLoS One* 2012; **7**: e34106.
- Mulgrew AT, Fox N, Ayas NT, Ryan CF. Diagnosis and initial management of obstructive sleep apnea without polysomnography: a randomized validation study. *Ann Intern Med* 2007; **146**: 157–66.
- Rosen CL, Auckley D, Benca R, et al. A multisite randomized trial of portable sleep studies and positive airway pressure autotitration versus laboratory-based polysomnography for the diagnosis and treatment of obstructive sleep apnea: the HomePAP study. *Sleep* 2012; **35**: 757–67.
- Kuna ST, Gurubhagavatula I, Maislin G, et al. Noninferiority of functional outcome in ambulatory management of obstructive sleep apnea. *Am J Respir Crit Care Med* 2011; **183**: 1238–44.
- Masa JF, Corral J, Pereira R, et al. Therapeutic decision-making for sleep apnea and hypopnea syndrome using home respiratory polygraphy: a large multicentric study. *Am J Respir Crit Care Med* 2011; **184**: 964–71.
- Schwab R, Pasirstein M, Pierson R, et al. Identification of upper airway anatomic risk factors for obstructive sleep apnea with volumetric magnetic resonance imaging. *Am J Respir Crit Care Med* 2003; **168**: 522–30.
- Malhotra A, Loscalzo J. Sleep and cardiovascular disease: an overview. *Prog Cardiovasc Dis* 2009; **51**: 279–84.
- Mezzanotte WS, Tangel DJ, White DP. Waking genioglossal EMG in sleep apnea patients versus normal controls (a neuromuscular compensatory mechanisms). *J Clin Invest* 1992; **89**: 1571–79.
- Saboisky JP, Chamberlin NL, Malhotra A. Potential therapeutic targets in obstructive sleep apnoea. *Expert Opin Ther Targets* 2009; **13**: 795–809.
- Wellman A, Jordan AS, Malhotra A, et al. Ventilatory control and airway anatomy in obstructive sleep apnea. *Am J Respir Crit Care Med* 2004; **170**: 1225–32.
- Strohl K, Butler J, Malhotra A. Mechanical properties of the upper airway. *Compr Physiol* 2012; **2**: 1853–72.
- Badr MS, Roiber F, Skatrud JB, Dempsey J. Pharyngeal narrowing/occlusion during central sleep apnea. *J Appl Physiol* 1995; **78**: 1806–15.
- Edwards BA, Sands SA, Eckert DJ, et al. Acetazolamide improves loop gain but not the other physiological traits causing obstructive sleep apnoea. *J Physiol* 2012; **590**: 1199–211.
- Eckert DJ, Owens RL, Kehlmann GB, et al. Eszopiclone increases the respiratory arousal threshold and lowers the apnoea/hypopnoea index in obstructive sleep apnoea patients with a low arousal threshold. *Clin Sci (Lond)* 2011; **120**: 505–14.
- Dempsey JA, Veasey SC, Morgan BJ, O'Donnell CP. Pathophysiology of sleep apnea. *Physiol Rev* 2010; **90**: 47–112.
- Heinzer RC, White DP, Jordan AS, et al. Trazodone increases arousal threshold in obstructive sleep apnoea. *Eur Respir J* 2008; **31**: 1308–12.
- Begle RL, Badr S, Skatrud JB, Dempsey JA. Effect of lung inflation on pulmonary resistance during NREM sleep. *Am Rev Respir Dis* 1990; **141**: 854–60.
- Owens RL, Malhotra A, Eckert DJ, White DP, Jordan AS. The influence of end-expiratory lung volume on measurements of pharyngeal collapsibility. *J Appl Physiol* 2010; **108**: 445–51.
- Heinzer RC, Stanchina ML, Malhotra A, et al. Lung volume and continuous positive airway pressure requirements in obstructive sleep apnea. *Am J Respir Crit Care Med* 2005; **172**: 114–17.
- Van de Graaff WB. Thoracic influence on upper airway patency. *J Appl Physiol* 1988; **65**: 2124–31.
- Younes M, Ostrowski M, Thompson W, Leslie C, Shewchuk W. Chemical control stability in patients with obstructive sleep apnea. *Am J Respir Crit Care Med* 2001; **163**: 1181–90.
- Ballard R, Irvin CG, Martin RJ, Pak J, Pandey R, White DP. Influence of sleep on lung volume in asthmatic patients and normal subjects. *J Appl Physiol* 1990; **68**: 2034–41.

- 38 Owens RL, Edwards BA, Sands SA, et al. Upper airway collapsibility and patterns of flow limitation at constant end-expiratory lung volume. *J Appl Physiol* 2012; **113**: 691–99.
- 39 Stadler DL, McEvoy RD, Bradley J, Paul D, Catcheside PG. Changes in lung volume and diaphragm muscle activity at sleep onset in obese obstructive sleep apnea patients vs. healthy-weight controls. *J Appl Physiol* 2010; **109**: 1027–36.
- 40 Malhotra A, Hillman D. Obesity and the lung: 3. Obesity, respiration and intensive care. *Thorax* 2008; **63**: 925–31.
- 41 Saboisky JP, Butler JE, Gandevia SC, Eckert DJ. Functional role of neural injury in obstructive sleep apnea. *Front Neurol* 2012; **3**: 95.
- 42 Jordan AS, White DP, Lo YL, et al. Airway dilator muscle activity and lung volume during stable breathing in obstructive sleep apnea. *Sleep* 2009; **32**: 361–68.
- 43 Eckert DJ, Lo YL, Saboisky JP, Jordan AS, White DP, Malhotra A. Sensorimotor function of the upper-airway muscles and respiratory sensory processing in untreated obstructive sleep apnea. *J Appl Physiol* 2011; **111**: 1644–53.
- 44 McSharry D, O'Connor C, McNicholas T, et al. Genioglossus fatigue in obstructive sleep apnea. *Respir Physiol Neurobiol* 2012; **183**: 59–66.
- 45 Friberg D, Ansved T, Borg K, Carlsson-Nordlander B, Larsson H, Svanborg E. Histological indications of a progressive snorers disease in an upper airway muscle. *Am J Respir Crit Care Med* 1998; **157**: 586–93.
- 46 Kimoff R, Sforza E, Champagne V, Ofiara L, Gendron D. Upper airway sensation in snoring and obstructive sleep apnea. *Am J Respir Crit Care Med* 2001; **160**: 250–55.
- 47 Jobin V, Champagne V, Beaugregard J, Charbonneau I, McFarland DH, Kimoff RJ. Swallowing function and upper airway sensation in obstructive sleep apnea. *J Appl Physiol* 2007; **102**: 1587–94.
- 48 Yumino D, Redolfi S, Ruttanaumpawan P, et al. Nocturnal rostral fluid shift: a unifying concept for the pathogenesis of obstructive and central sleep apnea in men with heart failure. *Circulation* 2010; **121**: 1598–605.
- 49 Redolfi S, Arnulf I, Pottier M, et al. Attenuation of obstructive sleep apnea by compression stockings in subjects with venous insufficiency. *Am J Respir Crit Care Med* 2011; **184**: 1062–66.
- 50 Hanly P, Pierratos A. Improvement in sleep apnea in patients with chronic renal failure who undergo nocturnal hemodialysis. *N Engl J Med* 2001; **344**: 102–07.
- 51 Patil S, Schneider H, Gladmon E, et al. Obesity and upper airway mechanical control during sleep. *Am J Respir Crit Care Med* 2004; **169**: A435.
- 52 Chi L, Comyn FL, Mitra N, et al. Identification of craniofacial risk factors for obstructive sleep apnoea using three-dimensional MRI. *Eur Respir J* 2011; **38**: 348–58.
- 53 Malhotra A, Huang Y, Fogel R, et al. The male predisposition to pharyngeal collapse: the importance of airway length. *Am J Respir Crit Care Med* 2002; **166**: 1388–95.
- 54 Whittle AT, Marshall I, Mortimore IL, Wraith PK, Sellar RJ, Douglas NJ. Neck soft tissue and fat distribution: comparison between normal men and women by magnetic resonance imaging. *Thorax* 1999; **54**: 323–28.
- 55 Kirkness JP, Schwartz AR, Schneider H, et al. Contribution of male sex, age, and obesity to mechanical instability of the upper airway during sleep. *J Appl Physiol* 2008; **104**: 1618–24.
- 56 Kirkness JP, Peterson LA, Squier SB, et al. Performance characteristics of upper airway critical collapsing pressure measurements during sleep. *Sleep* 2011; **34**: 459–67.
- 57 Chin CH, Kirkness JP, Patil SP, et al. Compensatory responses to upper airway obstruction in obese apneic men and women. *J Appl Physiol* 2012; **112**: 403–10.
- 58 Pillar G, Malhotra A, Fogel R, Beaugregard J, Schnall R, White D. Airway mechanics and ventilation in response to resistive loading during NREM sleep: the influence of gender. *Am J Respir Crit Care Med* 2000; **162**: 1627–32.
- 59 Edwards BA, O'Driscoll DM, Ali A, Jordan AS, Trinder J, Malhotra A. Aging and sleep: physiology and pathophysiology. *Semin Respir Crit Care Med* 2010; **31**: 618–33.
- 60 Malhotra A, Huang Y, Fogel R, et al. Aging influences on pharyngeal anatomy and physiology: the predisposition to pharyngeal collapse. *Am J Med* 2006; **119**: e9–14.
- 61 Eikermann M, Jordan AS, Chamberlin NL, et al. The influence of aging on pharyngeal collapsibility during sleep. *Chest* 2007; **131**: 1702–09.
- 62 Marcus CL. Obstructive sleep apnea syndrome: differences between children and adults. *Sleep* 2000; **23** (suppl 4): S140–41.
- 63 Jenkinson C, Davies RJ, Mullins R, Stradling JR. Comparison of therapeutic and subtherapeutic nasal continuous positive airway pressure for obstructive sleep apnoea: a randomised prospective parallel trial. *Lancet* 1999; **353**: 2100–05.
- 64 Teran-Santos J, Jimenez-Gomez A, Cordero-Guevara, J. The association between sleep apnea and the risk of traffic accidents. Cooperative Group Burgos-Santander. *N Engl J Med* 1999; **340**: 847–51.
- 65 Strohl KP, Brown DB, Collop N, et al. ATS Ad Hoc Committee on Sleep Apnea, Sleepiness, and Driving Risk in Noncommercial Drivers. An official American Thoracic Society clinical practice guideline: sleep apnea, sleepiness, and driving risk in noncommercial drivers. *Am J Respir Crit Care Med* 2013; **187**: 1259–66.
- 66 Parati G, Lombardi C, Hedner J, et al. Position paper on the management of patients with obstructive sleep apnea and hypertension: joint recommendations by the European Society of Hypertension, by the European Respiratory Society and by the members of European COST (COoperation in Scientific and Technological research) ACTION B26 on obstructive sleep apnea. *J Hypertens* 2012; **30**: 633–46.
- 67 Brooks D, Horner RL, Kozar LF, Render-Teixeira CL, Phillipson EA. Obstructive sleep apnea as a cause of systemic hypertension. Evidence from a canine model. *J Clin Invest* 1997; **99**: 106–09.
- 68 Lavie P, Here P, Hoffstein, V. Obstructive sleep apnea syndrome as a risk factor for hypertension. *BMJ* 2000; **320**: 479–82.
- 69 Peppard P, Young T, Palta M, Skatrud J. Prospective study of the association between sleep disordered breathing and hypertension. *N Engl J Med* 2000; **342**: 1378–84.
- 70 Montesi S, Edwards BA, Malhotra A, Bakker J. The effect of continuous positive airway pressure treatment on blood pressure: a systematic review and meta-analysis of randomized controlled trials. *J Clin Sleep Med* 2012; **8**: 587–96.
- 71 Pepin JL, Tamisier R, Barone-Rochette G, Launois SH, Levy P, Baguet JP. Comparison of continuous positive airway pressure and valsartan in hypertensive patients with sleep apnea. *Am J Respir Crit Care Med* 2010; **182**: 954–60.
- 72 Barbe F, Duran-Cantolla J, Sanchez-de-la-Torre M, et al. Effect of continuous positive airway pressure on the incidence of hypertension and cardiovascular events in nonsleepy patients with obstructive sleep apnea: a randomized controlled trial. *JAMA* 2012; **307**: 2161–68.
- 73 Barbe F, Duran-Cantolla J, Sanchez-de-la-Torre M, et al. Effect of continuous positive airway pressure on the incidence of hypertension and cardiovascular events in nonsleepy patients with obstructive sleep apnea: a randomized controlled trial. *JAMA* 2012; **307**: 2161–68.
- 74 Guyenet PG. The sympathetic control of blood pressure. *Nat Rev Neurosci* 2006; **7**: 335–46.
- 75 O'Connor GT, Caffo B, Newman AB, et al. Prospective study of sleep-disordered breathing and hypertension: the Sleep Heart Health Study. *Am J Respir Crit Care Med* 2009; **179**: 1159–64.
- 76 Cano-Pumarega I, Duran-Cantolla J, Aizpuru F, et al. Obstructive sleep apnea and systemic hypertension: longitudinal study in the general population: the Vitoria Sleep Cohort. *Am J Respir Crit Care Med* 2011; **184**: 1299–304.
- 77 Marin JM, Agusti A, Villar I, et al. Association between treated and untreated obstructive sleep apnea and risk of hypertension. *JAMA* 2012; **307**: 2169–76.
- 78 Kohler M, Stradling JR. Mechanisms of vascular damage in obstructive sleep apnea. *Nat Rev Cardiol* 2010; **7**: 677–85.
- 79 Marin JM, Carrizo SJ, Vicente E, Agusti AG. Long-term cardiovascular outcomes in men with obstructive sleep apnoea-hypopnoea with or without treatment with continuous positive airway pressure: an observational study. *Lancet* 2005; **365**: 1046–53.
- 80 Platt AB, Kuna ST, Field SH, et al. Adherence to sleep apnea therapy and use of lipid-lowering drugs: a study of the healthy-user effect. *Chest* 2010; **137**: 102–08.
- 81 Gottlieb DJ, Yenokyan G, Newman AB, et al. Prospective study of obstructive sleep apnea and incident coronary heart disease and heart failure: the sleep heart health study. *Circulation* 2010; **122**: 352–60.

- 82 Punjabi NM, Caffo BS, Goodwin JL, et al. Sleep-disordered breathing and mortality: a prospective cohort study. *PLoS Med* 2009; **6**: e1000132.
- 83 Nieto FJ, Peppard PE, Young T, Finn L, Hla KM, Farre R. Sleep-disordered breathing and cancer mortality: results from the Wisconsin Sleep Cohort Study. *Am J Respir Crit Care Med* 2012; **186**: 190–94.
- 84 Kaneko Y, Floras JS, Usui K, et al. Cardiovascular effects of continuous positive airway pressure in patients with heart failure and obstructive sleep apnea. *N Engl J Med* 2003; **348**: 1233–41.
- 85 Montesi SB, Bajwa EK, Malhotra A. Biomarkers of sleep apnea. *Chest* 2012; **142**: 239–45.
- 86 Foster GD, Sanders MH, Millman R, et al. Obstructive sleep apnea among obese patients with type 2 diabetes. *Diabetes Care* 2009; **32**: 1017–19.
- 87 Aronsohn RS, Whitmore H, Van Cauter E, Tasali E. Impact of untreated obstructive sleep apnea on glucose control in type 2 diabetes. *Am J Respir Crit Care Med* 2010; **181**: 507–13.
- 88 Punjabi NM, Beamer BA. Alterations in glucose disposal in sleep-disordered breathing. *Am J Respir Crit Care Med* 2009; **179**: 235–40.
- 89 Weinstock TG, Wang X, Rueschman M, et al. A controlled trial of CPAP therapy on metabolic control in individuals with impaired glucose tolerance and sleep apnea. *Sleep* 2012; **35**: 617–25B.
- 90 Sharma SK, Agrawal S, Damodaran D, et al. CPAP for the metabolic syndrome in patients with obstructive sleep apnea. *N Engl J Med* 2011; **365**: 2277–86.
- 91 Hoyos CM, Killick R, Yee BJ, Phillips CL, Grunstein RR, Liu PY. Cardiometabolic changes after continuous positive airway pressure for obstructive sleep apnoea: a randomised sham-controlled study. *Thorax* 2012; **67**: 1081–89.
- 92 Sivam S, Phillips CL, Trenell MI, et al. Effects of 8 weeks of continuous positive airway pressure on abdominal adiposity in obstructive sleep apnoea. *Eur Respir J* 2012; **40**: 913–18.
- 93 Yim-Yeh S, Rahangdale S, Nguyen AT, et al. Obstructive sleep apnea and aging effects on macrovascular and microcirculatory function. *Sleep* 2010; **33**: 1177–83.
- 94 Yim-Yeh S, Rahangdale S, Nguyen AT, et al. Vascular dysfunction in obstructive sleep apnea and type 2 diabetes mellitus. *Obesity (Silver Spring)* 2011; **19**: 17–22.
- 95 Craig SE, Kohler M, Nicoll D, et al. Continuous positive airway pressure improves sleepiness but not calculated vascular risk in patients with minimally symptomatic obstructive sleep apnoea: the MOSAIC randomised controlled trial. *Thorax* 2012; **67**: 1090–96.
- 96 Deane SA, Cistulli PA, Ng AT, Zeng B, Petocz P, Darendeliler MA. Comparison of mandibular advancement splint and tongue stabilizing device in obstructive sleep apnea: a randomized controlled trial. *Sleep* 2009; **32**: 648–53.
- 97 Ferguson KA, Ono T, Lowe AA, Keenan SP, Fleetham JA. A randomized crossover study of an oral appliance vs nasal-continuous positive airway pressure in the treatment of mild-moderate obstructive sleep apnea. *Chest* 1996; **109**: 1269–75.
- 98 Weaver TE, Mancini C, Maislin G, et al. CPAP treatment of sleepy patients with milder osa: results of the CATNAP randomized clinical trial. *Am J Respir Crit Care Med* 2012; **186**: 677–83.
- 99 Sullivan CE, Issa FG, Berthon-Jones M, Eves L. Reversal of obstructive sleep apnoea by continuous positive airway pressure applied through the nares. *Lancet* 1981; **1**: 862–65.
- 100 Squier SB, Patil SP, Schneider H, Kirkness JP, Smith PL, Schwartz AR. Effect of end-expiratory lung volume on upper airway collapsibility in sleeping men and women. *J Appl Physiol* 2010; **109**: 977–85.
- 101 Ayas NT, FitzGerald JM, Fleetham JA, et al. Cost-effectiveness of continuous positive airway pressure therapy for moderate to severe obstructive sleep apnea/hypopnea. *Arch Intern Med* 2006; **166**: 977–84.
- 102 Kohler M, Smith D, Tippet V, Stradling JR. Predictors of long-term compliance with continuous positive airway pressure. *Thorax* 2010; **65**: 829–32.
- 103 Engleman HM, Asgari-Jirhandeh N, McLeod AL, Ramsay CF, Deary IJ, Douglas NJ. Self-reported use of CPAP and benefits of CPAP therapy: a patient survey. *Chest* 1996; **109**: 1470–76.
- 104 Hoy CJ, Vennelle M, Kingshott RN, Engleman HM, Douglas NJ. Can intensive support improve continuous positive airway pressure use in patients with the sleep apnea/hypopnea syndrome? *Am J Respir Crit Care Med* 1999; **159**: 1096–100.
- 105 Lettieri CJ, Shah AA, Holley AB, Kelly WF, Chang AS, Roop SA. Effects of a short course of eszopiclone on continuous positive airway pressure adherence: a randomized trial. *Ann Intern Med* 2009; **151**: 696–702.
- 106 Reeves-Hoche MK, Hudgel DW, Meck R, Wittman R, Ross A, Zwillich CW. Continuous versus bilevel positive airway pressure for obstructive sleep apnea. *Am J Respir Crit Care Med* 1995; **151**: 443–49.
- 107 Vennelle M, White S, Riha RL, Mackay TW, Engleman HM, Douglas NJ. Randomized controlled trial of variable-pressure versus fixed-pressure continuous positive airway pressure (CPAP) treatment for patients with obstructive sleep apnea/hypopnea syndrome (OSAHS). *Sleep* 2010; **33**: 267–71.
- 108 Ayas NT, Patel SR, Malhotra A, et al. Auto-titrating versus standard continuous positive airway pressure for the treatment of obstructive sleep apnea: results of a meta-analysis. *Sleep* 2004; **27**: 249–53.
- 109 Ip S, D'Ambrosio C, Patel K, et al. Auto-titrating versus fixed continuous positive airway pressure for the treatment of obstructive sleep apnea: a systematic review with meta-analyses. *Syst Rev* 2012; **1**: 20.
- 110 Powell ED, Gay PC, Ojile JM, Litinski M, Malhotra A. A pilot study assessing adherence to auto-bilevel following a poor initial encounter with CPAP. *J Clin Sleep Med* 2012; **8**: 43–47.
- 111 Cistulli PA, Grunstein RR. Medical devices for the diagnosis and treatment of obstructive sleep apnea. *Expert Rev Med Devices* 2005; **2**: 749–63.
- 112 Almeida FR, Henrich N, Marra C, et al. Patient preferences and experiences of CPAP and oral appliances for the treatment of obstructive sleep apnea: a qualitative analysis. *Sleep Breath* 2012; published online July 26. DOI:10.1007/s11325-012-0739-6.
- 113 Mostafiz W, Dalci O, Sutherland K, et al. Influence of oral and craniofacial dimensions on mandibular advancement splint treatment outcome in patients with obstructive sleep apnea. *Chest* 2011; **139**: 1331–39.
- 114 Gotsopoulos H, Chen C, Qian J, Cistulli PA. Oral appliance therapy improves symptoms in obstructive sleep apnea: a randomized, controlled trial. *Am J Respir Crit Care Med* 2002; **166**: 743–48.
- 115 Itzhaki S, Dorchin H, Clark G, Lavie L, Lavie P, Pillar G. The effects of 1-year treatment with a Herbst mandibular advancement splint on obstructive sleep apnea, oxidative stress, and endothelial function. *Chest* 2007; **131**: 740–49.
- 116 Holley AB, Lettieri CJ, Shah AA. Efficacy of an adjustable oral appliance and comparison with continuous positive airway pressure for the treatment of obstructive sleep apnea syndrome. *Chest* 2011; **140**: 1511–16.
- 117 Weaver EM, Maynard C, Yueh B. Survival of veterans with sleep apnea: continuous positive airway pressure versus surgery. *Otolaryngol Head Neck Surg* 2004; **130**: 659–65.
- 118 Kezirian EJ, Hussey HM, Brietzke SE, et al. Hypopharyngeal surgery in obstructive sleep apnea: practice patterns, perceptions, and attitudes. *Otolaryngol Head Neck Surg* 2012; **147**: 964–71.
- 119 Weaver EM. Judging sleep apnea surgery. *Sleep Med Rev* 2010; **14**: 283–85.
- 120 Weaver TE, Maislin G, Dinges DF, et al. Relationship between hours of CPAP use and achieving normal levels of sleepiness and daily functioning. *Sleep* 2007; **30**: 711–19.
- 121 Kezirian EJ, White DP, Malhotra A, Ma W, McCulloch CE, Goldberg AN. Interrater reliability of drug-induced sleep endoscopy. *Arch Otolaryngol Head Neck Surg* 2010; **136**: 393–97.
- 122 Eastwood PR, Barnes M, Walsh JH, et al. Treating obstructive sleep apnea with hypoglossal nerve stimulation. *Sleep* 2011; **34**: 1479–86.
- 123 Schwartz AR, Barnes M, Hillman D, et al. Acute upper airway responses to hypoglossal nerve stimulation during sleep in obstructive sleep apnea. *Am J Respir Crit Care Med* 2012; **185**: 420–26.
- 124 Van de Heyning PH, Badr MS, Baskin JZ, et al. Implanted upper airway stimulation device for obstructive sleep apnea. *Laryngoscope* 2012; **122**: 1626–33.
- 125 Oksenberg A, Khamaysi I, Silverberg DS. Apnoea characteristics across the night in severe obstructive sleep apnoea: influence of body posture. *Eur Respir J* 2001; **18**: 340–46.
- 126 Redenius R, Murphy C, O'Neill E, Al-Hamwi M, Zallek SN. Does CPAP lead to change in BMI? *J Clin Sleep Med* 2008; **4**: 205–09.

- 127 Awad KM, Malhotra A, Barnet JH, Quan SF, Peppard PE. Exercise is associated with a reduced incidence of sleep-disordered breathing. *Am J Med* 2012; **125**: 485–90.
- 128 Guimaraes KC, Drager LF, Genta PR, Marcondes BF, Lorenzi-Filho G. Effects of oropharyngeal exercises on patients with moderate obstructive sleep apnea syndrome. *Am J Respir Crit Care Med* 2009; **179**: 962–66.
- 129 Pack AI, Black JE, Schwartz JRL, Matheson JK. Modafinil as adjunct therapy for daytime sleepiness in obstructive sleep apnea. *Am J Respir Crit Care Med* 2001; **164**: 1675–81.
- 130 Pepin JL, Viot-Blanc V, Escourrou P, et al. Prevalence of residual excessive sleepiness in CPAP-treated sleep apnoea patients: the French multicentre study. *Eur Respir J* 2009; **33**: 1062–67.
- 131 Kingshott RN, Vennelle M, Coleman EL, Engleman HM, Mackay TW, Douglas NJ. Randomized, double-blind, placebo-controlled crossover trial of modafinil in the treatment of residual excessive daytime sleepiness in the sleep apnea/hypopnea syndrome. *Am J Respir Crit Care Med* 2001; **163**: 918–23.
- 132 Eckert DJ, Jordan AS, Merchia P, Malhotra A. Central sleep apnea: pathophysiology and treatment. *Chest* 2007; **131**: 595–607.
- 133 Malhotra A, Bertisch S, Wellman A. Complex sleep apnea: it isn't really a disease. *J Clin Sleep Med* 2008; **4**: 406–08.
- 134 Javaheri S, Smith J, Chung E. The prevalence and natural history of complex sleep apnea. *J Clin Sleep Med* 2009; **5**: 205–11.
- 135 Morgenthaler TI, Gay PC, Gordon N, Brown LK. Adaptive servoventilation versus noninvasive positive pressure ventilation for central, mixed, and complex sleep apnea syndromes. *Sleep* 2007; **30**: 468–75.
- 136 Pillar G, Peled R, Lavie P. Recurrence of sleep apnea without concomitant weight increase 7–5 years after weight reduction surgery. *Chest* 1994; **106**: 1702–04.
- 137 Lettieri CJ, Eliasson AH, Greenburg DL. Persistence of obstructive sleep apnea after surgical weight loss. *J Clin Sleep Med* 2008; **4**: 333–38.
- 138 Sugerman HJ, Fairman RP, Sood RK, Engle K, Wolfe L, Kellum JM. Long-term effects of gastric surgery for treating respiratory insufficiency of obesity. *Am J Clin Nutr* 1992; **55** (2 suppl): 597S–601S.
- 139 Marien H, Rodenstein D. Morbid obesity and sleep apnea. Is weight loss the answer? *J Clin Sleep Med* 2008; **4**: 339–40.
- 140 Smith PL, Gold AR, Meyers DA, Haponik EF, Bleecker ER. Weight loss in mildly to moderately obese patients with obstructive sleep apnea. *Ann Intern Med* 1985; **103**: 850–55.
- 141 Kezirian EJ, Malhotra A, Goldberg AN, White DP. Changes in obstructive sleep apnea severity, biomarkers, and quality of life after multilevel surgery. *Laryngoscope* 2010; **120**: 1481–88.