

Mohammed Saleh
Antoine Vieillard-Baron

On the role of left ventricular diastolic function in the critically ill patient

Received: 16 September 2011
Accepted: 3 October 2011
Published online: 3 January 2012
© Copyright jointly held by Springer and ESICM 2011

M. Saleh · A. Vieillard-Baron (✉)
Intensive Care Unit, Section Thorax-Vascular
Diseases-Abdomen-Metabolism, University Hospital Ambroise
Paré, 9 avenue Charles de Gaulle, 92104 Boulogne, France
e-mail: antoine.vieillard-baron@apr.aphp.fr
Tel.: +33-149095603
Fax: +33-149095892

M. Saleh · A. Vieillard-Baron
Faculté de Médecine Paris Ile de France Ouest,
Université de Versailles Saint Quentin en Yvelines,
78000 Versailles, France

In the December 2011 issue of *Intensive Care Medicine*, Papanikolaou and coworkers [1] reported their investigation into the diagnostic performance of echocardiography in predicting the outcome of weaning, and especially the role of left ventricular (LV) diastolic function in weaning failure. The main result is presented in Fig. 2 of their study [1]. Among the 23 patients without LV diastolic dysfunction before the spontaneous breathing trial (SBT), eight failed to be weaned (35%), whereas among the 20 patients with moderate to severe LV diastolic dysfunction, 80% failed to be weaned. In patients with mild diastolic dysfunction, 3/7 (57%) failed. Overall, cardiogenic pulmonary edema was suspected to be the cause of weaning failing in 65% of cases [1]. The originality of the study, which renders it especially interesting, is that Papanikolaou and coworkers only included patients with preserved LV systolic function. Caille et al. [2]

previously reported similar results in 117 unselected patients. In many patients, however, LV diastolic dysfunction was associated with systolic dysfunction, which is also strongly associated with weaning failure [2]. In the study by Lamia et al. [3] increase in LV filling pressures related to SBT detected by Doppler echocardiography was very predictive of weaning failure, but the population was highly selected, i.e., patients with already two failed SBTs, and around 20% of patients had a decreased LV ejection fraction.

The role of LV diastolic function in critically ill patients is probably greatly underestimated by intensivists, because it is “understudied”. One of the reasons is that in the past diastolic function was difficult to evaluate at the bedside. With the development of critical care echocardiography [4]—more compact machines, improved 2D imaging, development of new indices of cardiac function, and mainly the increase in intensivists’ skills in echocardiography—LV diastolic function can now be easily evaluated at the bedside in the ICU. Nagueh et al. [5] have recently published recommendations for the evaluation of LV diastolic function using echocardiography. They propose a practical and simple approach to the grading of LV diastolic dysfunction, using pulsed Doppler at the mitral valve and at the mitral annulus [5]. This classification, used by Papanikolaou et al. defines mild (grade I) dysfunction (impaired relaxation), moderate (grade II) dysfunction (impaired relaxation with mild to moderate elevation of LV filling pressures) and finally severe (grade III) dysfunction [5]. Nagueh et al. [5] also recommend performing Doppler echocardiography during exercise, a diastolic stress test, in outpatients to unmask relaxation impairment. In patients with undiagnosed myocardial relaxation impairment, echocardiography demonstrates an increase in LV filling pressure and a decrease in the relaxation time during the test [6]. Interestingly, weaning can be considered as an exercise with an increase in respiratory load, in cardiac load and in

oxygen demand. In the study by Caille et al. [2], as in the study by Ait-Oufella et al. [7], LV relaxation was significantly shortened during the SBT. What is remarkable in the study by Papanikolaou et al. is not that grade II-III patients failed to be weaned: this was expected since they had marked elevation of filling pressures before SBT. No, it is that grade I patients also failed in 57% of cases and that the authors demonstrated the ability of Doppler echocardiography to detect patients at high risk of weaning failure with a simple evaluation of LV diastolic function, as proposed [5].

LV diastolic function is related to myocardial relaxation, LV stiffness, and filling pressures. In the ICU, there are many situations where one or more of these factors are impaired, leading to LV diastolic dysfunction. This can be related to the patient's history (age, hypertension,...), to the disease (cardiac ischemia, arrhythmia, heart failure, pericardial disease, valvulopathy, sepsis, etc.) or to the treatment (volume resuscitation, positive end-expiratory pressure). Owan et al. [8] have reported how the prevalence of heart failure with a preserved ejection fraction has increased over a 15-year period, representing now almost 50% of cases. However, in the ICU, we lack data from large studies regarding the incidence, characteristics, and impact on prognosis of LV diastolic dysfunction. Septic shock is a good illustration. Clinical studies have suggested an improvement in LV compliance: major for some [9], mild for others [10–12]. This may explain why severe LV systolic dysfunction is not associated with high filling pressures. But in experimental studies, as in the study by Barraud et al. [13] who used LV pressure/

volume loops, an increase in LV stiffness has been reported. Bouhemad et al. [12] have recently found isolated LV relaxation impairment (grade I of the Nagueh et al. classification) in patients with septic shock and preserved LV ejection fraction. It was associated with elevated troponin, suggesting a significant cardiac injury [12]. How it impacts tolerance to fluids remains to be elucidated.

In large clinical studies, cardiologists have extensively pointed out the impact of LV diastolic dysfunction on prognosis. For instance, increase in LV stiffness during myocardial infarction is strongly associated with heart failure and death [14]. In critically ill patients, small studies are available and more have to be done. Decrease in LV stiffness seems to improve prognosis in septic shock [9]. In a study performed in 58 mechanically ventilated patients without any history of heart failure and with preserved LV ejection fraction, Ikonomidis et al. [15] reported that patients with LV relaxation impairment, detected by Doppler echocardiography, and increased N-terminal-pro-brain natriuretic peptide have a lower survival rate. Similar results were suggested by Sturgess et al. [16] in septic shock.

In conclusion, the study by Papanikolaou et al. sends us at least two messages. First, it says to intensivists that during the weaning process Doppler echocardiography is valuable in detecting patients at high risk for weaning failure. Second, it (re)emphasizes the importance of evaluating LV diastolic function in critically ill patients upon admission to the ICU, during their stay, and maybe also after discharge.

References

- Papanikolaou J, Makris D, Saranteas T, Karakitsos D, Zintzaras E, Karabinis A, Kostopanagiotou G, Zakynthinos E (2011) New insights into weaning from mechanical ventilation: left ventricular diastolic dysfunction is a key player. *Intensive Care Med* 37:1976–1985. doi: 10.1007/s00134-011-2368-0
- Caille V, Amiel JB, Charron C, Belliard G, Vieillard-Baron A, Vignon P (2010) Echocardiography: a help in the weaning process. *Crit Care* 14:R120
- Lamia B, Maizel J, Ochagavia A, Chemla D, Osman D, Richard C, Teboul JL (2009) Echocardiographic diagnosis of pulmonary artery occlusion pressure elevation during weaning from mechanical ventilation. *Crit Care Med* 37:1696–1701
- Expert round table on ultrasound in ICU (2011) International expert statement on training standards for critical care ultrasonography. *Intensive Care Med* 37: 1077–1083
- Nagueh S, Appleton C, Gillebert T, Marino P, Oh J, Smiseth O, Waggoner A, Flachskampf F, Pellikka P, Evangelisa A (2009) Recommendations for the evaluation of left ventricular diastolic function by echocardiography. *Eur J Echocardiogr* 10:165–193
- Ha JW, Pellikka PA, Ommen SR, Stussy VL, Bailey KR, Steward JB, Tajik AJ (2005) Diastolic stress echocardiography: a novel noninvasive diagnostic test for diastolic dysfunction using supine bicycle exercise Doppler echocardiography. *J Am Soc Echocardiogr* 18:63–68
- Ait-Oufella H, Tharaux PL, Baudel JL, Vandermeersch S, Meyer P, Tonnellier M, Dussaule JC, Guidet B, Offenstadt G, Maury E (2007) Variation in natriuretic peptides and mitral flow indexes during successful ventilatory weaning: a preliminary study. *Intensive Care Med* 33:1183–1186
- Owan T, Hodge D, Herges R, Jacobsen S, Roger V, Redfield M (2006) Trends in prevalence and outcome of heart failure with preserved ejection fraction. *N Engl J Med* 355:251–259
- Parker M, Shelhamer J, Bacharach S, Green M, Natanson C, Frederick T, Damske B, Parrillo J (1984) Profound but reversible myocardial depression in patients with septic shock. *Ann Intern Med* 100:483–490
- Vieillard-Baron A, Schmitt JM, Beauchet A, Augarde R, Prin S, Page B, Jardin F (2001) Early preload adaptation in septic shock? *Anesthesiology* 94:400–406
- Etchecopar-Chevreuil C, François B, Clavel M, Pichon N, Gastinne H, Vignon P (2008) Cardiac morphological and functional changes during early septic shock: a transesophageal echocardiographic study. *Intensive Care Med* 34:250–256

-
12. Bouhemad B, Nicolas-Robin A, Arbelot C, Arthaud M, Féger F, Rouby JJ (2008) Isolated and reversible impairment of left ventricular relaxation in patients with septic shock. *Crit Care Med* 36:766–774
 13. Barraud D, Faivre V, Damy T, Welschbillig S, Gayat E, Heymes C, Payen D, Shah A, Mebazaa A (2007) Levosimendan restores both systolic and diastolic cardiac performance in lipopolysaccharide-treated rabbits: comparison with dobutamine and milrinone. *Crit Care Med* 35:1376–1382
 14. Somaratne JB, Whalley GA, Gamble GD, Doughty RN (2007) Restrictive filling pattern is a powerful predictor of heart failure events post acute myocardial infarction and in established heart failure: a literature-based meta-analysis. *J Card Fail* 13:346–352
 15. Ikonomidis I, Nikolaou M, Dimopoulou I, Paraskevaidis I, Lekakis J, Mavrou I, Tzanela M, Kopterides P, Tsangaris I, Armaganidis A, Kremastinos DT (2010) Association of left ventricular diastolic dysfunction with elevated NT-pro-BNP in general intensive care unit patients with preserved ejection fraction: a complementary role of tissue Doppler imaging parameters and NT-pro-BNP levels for adverse outcome. *Shock* 33:141–148
 16. Sturgess D, Marwick T, Joyce C, Jenkins C, Masci P, Stewart D, Venkatesh B (2010) Prediction of hospital outcome in septic shock: a prospective comparison of tissue Doppler and cardiac biomarkers. *Crit Care* 14:R44

John Papanikolaou
Demosthenes Makris
Theodosios Saranteas
Dimitrios Karakitsos
Elias Zintzaras
Andreas Karabinis
Georgia Kostopanagiotou
Epaminondas Zakynthinos

New insights into weaning from mechanical ventilation: left ventricular diastolic dysfunction is a key player

Received: 18 January 2011
Accepted: 6 August 2011
Published online: 6 October 2011
© Copyright jointly held by Springer and ESICM 2011

Electronic supplementary material

The online version of this article (doi:10.1007/s00134-011-2368-0) contains supplementary material, which is available to authorized users.

J. Papanikolaou · D. Makris ·
E. Zakynthinos

Department of Critical Care, School
of Medicine, University of Thessaly,
University Hospital of Larissa,
Thessaly, Greece

T. Saranteas · G. Kostopanagiotou
2nd Department of Anaesthesiology,
School of Medicine, University of Athens,
University Hospital of Athens
'Attikon', Athens, Greece

D. Karakitsos · A. Karabinis
Department of Critical Care, General State
Hospital of Athens, Athens, Greece

E. Zintzaras
Department of Biomathematics, School
of Medicine, University of Thessaly,
Larissa, Greece

E. Zintzaras
Institute for Clinical Research and Health
Policy Studies, Tufts Medical Center,
Tufts University School of Medicine,
Boston, MA, USA

J. Papanikolaou (✉) · E. Zakynthinos (✉)
Biopolis, 41110 Larissa, Greece
e-mail: y_papanikolaou@hotmail.com
Tel.: +30-241-0682960
Fax: +30-241-0670838

E. Zakynthinos
e-mail: ezakynth@yahoo.com

Abstract Purpose: To investigate the diagnostic performance of Doppler echocardiography (DE) in predicting the outcome of weaning from mechanical ventilation in patients without overt cardiac disease.

Methods: Fifty critical care noncardiac patients who fulfilled predetermined criteria for weaning underwent DE before and at the end of spontaneous breathing trial (pre-SBT/end-SBT, respectively). "Conventional" mitral inflow analysis and "advanced" DE parameters [tissue Doppler imaging (TDI)-derived mitral/tricuspid annular velocities and color M-mode Doppler velocity of propagation (V_p)] were used to assess left ventricular (LV) diastolic function/filling pressures. Weaning was considered successful if patients had been extubated after successful SBT and sustained spontaneous breathing for more than 48 h. **Results:**

Twenty-eight patients (56%) failed weaning; 23 patients failed SBT and 5 required reintubation within 48 h. Weaning failure was associated with

the degree of LV diastolic dysfunction at pre-SBT ($P = 0.01$). Patients who failed weaning presented evidence of increased LV filling pressures at pre-SBT, by demonstrating increased E/E_m and E/V_p ratios compared with patients with successful outcome ($P \leq 0.004$); pre-SBT values of lateral E/E_m greater than 7.8 and E/V_p greater than 1.51 predicted weaning failure with an area under the curve, sensitivity (%), and specificity (%) of 0.86, 79, and 100, and 0.74, 75, and 73, respectively. Lateral E/E_m was the only factor independently associated with weaning failure before SBT; OR (95% CI) 5.62 (1.17–26.96), $P = 0.03$. **Conclusions:** Our findings suggest that LV diastolic dysfunction is significantly associated with weaning outcome in critically ill patients with preserved LV systolic function. An E/E_m ratio greater than 7.8 may identify patients at high risk of weaning failure.

Keywords Doppler echocardiography · Left ventricular diastolic dysfunction · Spontaneous breathing trial · Weaning outcome

Introduction

Weaning from mechanical ventilation (MV) is important for critical care patients. Prolonged MV is associated with increased morbidity, cost of care, and mortality in the intensive care unit (ICU) [1]. Several diagnostic tools and treatment algorithms have been suggested in order to predict successful liberation from the ventilator, such as clinical characteristics, respiratory functional indices, and laboratory parameters [1–3]. However, successful weaning still remains a challenging issue.

Hemodynamic alterations and cardiac dysfunction may play a critical role in weaning outcome [4]. After removal of positive-pressure ventilation, negative intrathoracic pressures and sympathetic overstimulation [5] may increase cardiac workload [6] and left ventricular (LV) afterload [7, 8], thus impairing LV compliance; weaning-induced myocardial ischemia [9, 10] or RV dysfunction [11] may also cause LV diastolic dysfunction in weaning. These phenomena, together with increased venous return [7, 8], may increase LV filling pressures and provoke pulmonary edema. Previous investigations pointed out that LV diastolic dysfunction may be a major drawback in weaning [12–14], but study populations included patients with known heart disease and/or concomitant LV systolic dysfunction, who are theoretically at high risk of weaning failure related to pulmonary venous congestion [13, 14]. Yet, the role of LV diastolic dysfunction in the clinical setting of ICU is less clear.

In the present study, we hypothesized that LV diastolic dysfunction may be an important aspect of weaning failure even in ICU patients with preserved LV systolic function without known cardiac pathology. We prospectively evaluated LV diastolic function before and during spontaneous breathing trial (SBT), by performing Doppler echocardiography (DE) in a population who fulfilled predetermined criteria for weaning. In addition, we sought to evaluate the diagnostic performance of DE indices, especially those of LV diastolic function, in predicting weaning outcome.

Patients and methods

In the present prospective study, consecutive sampling was used to recruit patients hospitalized in the General State Hospital of Athens between 2008 and 2009. Patients were included if they had been under MV for more than 72 h and fulfilled predetermined criteria to undergo their first T-tube SBT [1]: (a) clear improvement or resolution of the underlying condition for which the patient had been intubated; (b) alertness, ability to communicate, no further need for sedation; (c) core temperature no greater than 39°C; (d) hemoglobin concentration greater than 7 g/dL; (e) pressure support MV; (f) hemodynamic stability (heart rate no greater than 120/min, systolic blood

pressure between 90 and 160 mmHg), no need for vasoactive drugs; (g) ventilatory stability [fraction of inspired oxygen (FiO_2) no greater than 0.4, arterial partial pressure of oxygen (PaO_2) greater than 60 mmHg, $\text{PaO}_2/\text{FiO}_2$ at least 150, positive end-expiratory pressure no greater than 5 cmH_2O]; (h) adequate pulmonary function (respiratory rate no greater than 35/min, tidal volume greater than 5 mL/kg, no significant respiratory acidosis, adequate cough, not excessive tracheobronchial secretions). Exclusion criteria included (a) pre-existing or ensuing (during the period of MV) cardiac pathology (coronary artery disease, severe valvulopathy, cardiomyopathy), (b) atrial fibrillation or other arrhythmias, (c) abnormal LV ejection fraction (less than 0.50) or regional wall motion abnormalities [15], (d) severe neuromuscular disorders. The study was approved by the institutional ethics committee. Next of kin provided written, informed consent for all subjects. Clinical management decisions were taken by the attending physicians whereas all cases were discussed daily in multidisciplinary meeting.

Initially, conventional transthoracic 2D echocardiographic examination was performed to assess global LV/RV function [15]. Patients underwent baseline clinical assessment for evaluation of hemodynamic-respiratory parameters, arterial blood gasses, rapid shallow breathing index (RSBI) [16], and pressure–frequency product (PFP) [17], and DE evaluation followed, while patients were in pressure support ventilation (pre-SBT measurements). MV was discontinued and the patient started breathing spontaneously for 30 min through a T-tube circuit [1]. Follow-up DE (end-SBT) measurements in patients who succeeded in the trial were collected 30 min after SBT initiation; in those who failed the procedure, measurements were obtained before reconnection to the ventilator.

SBT

SBT failure was defined if at least one of the following signs appeared during the trial [1]: (a) objective indices of failure: tachypnea at least 35 breaths/min, use of accessory respiratory muscles, tachycardia at least 140 beats/min, systolic arterial pressure greater than 200 or less than 80 mmHg, hypoxemia—oxygen saturation no greater than 90%, acidosis, arrhythmia; (b) subjective indices: diaphoresis, agitation, depressed mental status, clinical signs of distress. SBT without the presence of the above signs was considered successful and the patients were extubated. The decision to initiate or terminate SBT was taken by the attending physician according to the criteria previously detailed. Continuous electrocardiographic monitoring (3-channel recorder using leads I, II, and V2) was used for the detection of ST-segment deviations indicating myocardial ischemia, as suggested [10]; weaning-induced acute cardiac dysfunction—pulmonary edema was evaluated as previously suggested [13, 18]. Noninvasive ventilation (NIV) was not used as per protocol

to assist patients and to avoid reintubation. Attending physicians were not aware of DE findings.

Weaning outcomes

Weaning success was defined as the ability of patients to pass the SBT and to remain on spontaneous ventilation more than 48 h from extubation [1].

Doppler echocardiographic study

Doppler echocardiography was performed from the apical 4-chamber view with an ultrasound device (Philips, XD11 XE, Andover, MA, USA), equipped with the tissue Doppler imaging program and a phased array multifrequency transducer. Doppler signals were recorded along with the electrocardiogram and respiratory cycle waveform at a sweep speed of 100 mm/s and were stored digitally in the hardware for later analysis. Off-line analysis was carried out by an experienced cardiologist blinded to patients' identity and clinical status. The average of three end-expiratory cycles was used [19] (see also online data supplement).

Mitral inflow pulsed-wave Doppler signals [peak velocities of early (*E*) and late (*A*) LV diastolic filling, E-wave deceleration time (*DTE*)], tissue Doppler imaging (*TDI*)-derived peak systolic (*S_m*)/early diastolic (*E_m*)/late diastolic (*A_m*) velocities at the lateral/septal mitral annulus and lateral tricuspid annulus, and color M-mode Doppler velocity of propagation (*V_p*) were obtained from the apical 4-chamber view, as suggested [19]. Analysis was also performed for "conventional" (*E/A* ratio) and "advanced" (*E/E_m*, *E/V_p*) DE indices of LV filling pressures [19].

LV diastolic function was graded by means of DE, as suggested [19]. Accordingly, our patients were classified as having (1) normal diastolic function, (2) grade I (mild) diastolic dysfunction, or (3) grade II–III (moderate to severe) diastolic dysfunction.

Duration of ultrasound studies was 3 ± 0.3 min. The interobserver reproducibility of Doppler and TDI parameters was evaluated by two observers in 20 randomly selected patients (Table 1). Mean (\pm standard error, SE)% absolute difference between evaluation of DE parameters was overall 2.8 ± 0.3 .

Data analysis

Descriptive statistics were used to summarize the baseline characteristics and the results were expressed as mean \pm SE. The *t* test or χ^2 (or Fisher's test) was applied for comparisons between groups. Correlations between variables were assessed appropriately either by Pearson's *r*² or by Spearman's rho. Receiver operating characteristic (ROC) curve analysis was performed to evaluate the diagnostic performance of clinical/Doppler parameters in identifying patients who failed SBT and/or weaning. The area under the curve (AUC) and the respective 95% confidence interval (95% CI) was estimated according to Hanley and McNeil [20]. The AUC curves were compared using the method described by DeLong et al. [21]. Multiple logistic regression analysis was used to examine the effect of multiple clinical/echocardiographic risk factors in weaning failure. A *P* value less than 0.05 was considered statistically significant. The statistical package SPSS 13.0 (Chicago, IL, USA) was used. ROC analyses were performed using subroutines in Compaq Visual Fortran 90 with the IMSL library (Edition 6.6.0, 000. Polyhedron Software Ltd., Witney, UK).

Results

Fifty patients participated in the study (Table 2). Twenty-six patients had severe neuro-critical illness on admission [traumatic brain injury (*n* = 17), intracranial hemorrhage (*n* = 4), scheduled neurosurgery (*n* = 5)]. Twenty-one

Table 1 Interobserver reproducibility of various Doppler and TDI parameters in 20 randomly selected patients

	Observer 1	Observer 2	Absolute difference [mean (SE)] (%)	<i>P</i>
<i>E</i> (cm/s)	81.7 (3.7)	81.9 (3.8)	1.2 (0.25)	0.592
<i>DTE</i> (ms)	194.8 (9)	194.5 (8.95)	3.75 (0.48)	0.725
Lateral <i>S_m</i> , (cm/s)	12.2 (0.75)	12.15 (0.73)	0.45 (0.17)	0.804
Lateral <i>E_m</i> , (cm/s)	13.2 (1.2)	13.2 (1.1)	0.4 (0.13)	1.0
Lateral <i>E/E_m</i>	7.37 (0.9)	7.36 (0.88)	0.35 (0.12)	0.995
<i>V_p</i> (cm/s)	65.5 (4.47)	65.05 (4.36)	2.45 (0.53)	0.564
<i>E/V_p</i>	1.35 (0.1)	1.36 (0.1)	0.065 (0.015)	0.743

Data are expressed as mean (SE). Differences between the two observers were tested by paired *t* test (a 2-tailed *P* value less than 0.05 was considered to be significant)

TDI tissue Doppler imaging; *SE* standard error; *E* pulsed-Doppler transmitral inflow early diastolic velocity; *DTE* E-wave

deceleration time; *S_m* and *E_m* *TDI*-derived peak systolic and early diastolic velocities at the lateral aspect of the mitral annulus, respectively; *V_p* color M-mode Doppler velocity of propagation

Table 2 Clinical characteristics on admission and baseline hemodynamic/2D echocardiographic data prior to SBT of all 50 patients who participated in the final echocardiographic analysis

Clinical characteristics on admission	
Age (years)	52.38 (2.59)
Sex (male/female)	33 (66)/17 (34)
BMI (kg/m ²)	26.69 (0.61)
APACHE II score on admission	17.72 (0.51)
SOFA score on admission	5.46 (0.24)
History	
Hypertension	17 (34)
Diabetes mellitus	9 (18)
Smoking	24 (48)
COPD	21 (42)
Cause of mechanical ventilation	
Postsurgical respiratory failure	8 (16)
Traumatic brain injury	17 (34)
Nontraumatic coma	8 (16)
Acute respiratory failure due to lung infection	6 (12)
Septic shock	11 (22)
2D echocardiographic data at the time of patients' recruitment	
IVSTD (mm)	9.5 (0.2)
LVEDD (mm)	48.9 (0.5)
PWTD (mm)	9.4 (0.2)
LVESD (mm)	33.9 (0.5)
LV mass (Penn) (g/m ²)	102.4 (4.1)
RWT	0.39 (0.06)
LVEF (%)	59.7 (0.8)
RVFAC (%)	50.5 (1.5)
RVEDA/LVEDA	0.48 (0.06)
Baseline hemodynamic data (at pre-SBT)	
Systolic BP (mmHg)	142.5 (3)
Diastolic BP (mmHg)	78.1 (1.7)
Mean BP (mmHg)	99.6 (1.9)
Heart rate (beats/min)	90.2 (1.7)
Rate–pressure product (beats/min × mmHg)	12,863 (367)
PaO ₂ (mmHg)	117.3 (4.3)
PaCO ₂ (mmHg)	38.7 (0.4)
PaO ₂ /FiO ₂ ratio	308.5 (12.5)
pH	7.45 (0.004)

Continuous data are presented as mean (SE), categorical data are presented as *n* (%)

BMI body mass index, *APACHE II* acute physiology and chronic health evaluation score II, *SOFA* sequential organ failure assessment, *COPD* chronic obstructive pulmonary disease, *IVST* interventricular septum thickness (end-diastole), *LVEDD* left ventricular end-diastolic diameter, *PWTD* posterior wall thickness (end-diastole), *LVESD* left ventricular end-systolic diameter, *RWT* relative wall thickness, *LVEF* left ventricular ejection fraction, *RVFAC* right ventricular fractional area change, *RVEDA* right ventricular end-diastolic area, *LVEDA* left ventricular end-diastolic area, *BP* blood pressure, *rate–pressure product* heart rate × systolic blood pressure, *PaO₂* partial pressure of oxygen, *PaCO₂* partial pressure of carbon dioxide, *FiO₂* fraction of inspired oxygen

patients had a history of chronic obstructive pulmonary disease (COPD). Prehospital data for GOLD classification [22] were available for 12 COPD patients: stage II (*n* = 9); stage III–IV (*n* = 3).

Overall, 28 (56%) out of 50 patients failed weaning (Fig. 1): 23 (46%) failed SBT and 5 passed SBT but required reintubation within 48 h. Fifteen out of 23 patients who failed SBT (65%) presented clinical signs

suggestive of pulmonary edema (PE) [13, 18], such as rales, wheezes, bronchospasm, diaphoresis, adrenergic overstimulation; four of them exhibited reversible ischemic ST-segment deviations on SBT. Four patients failed SBT primarily due to hypoxemia-respiratory acidosis and four others due to consciousness level disorders. Reasons for reintubation within 48 h were respiratory failure (*n* = 3; two of them presented signs compatible with PE), decreased consciousness–inability to protect airway (*n* = 2). NIV was used only in three out of five patients who were reintubated within 48 h after initially successful SBT. Forty-three patients (86%) required inotropes/vasopressors upon admission; none needed such agents during the 48-h weaning period. None of our patients was pretreated with diuretics 8 h before SBT; four patients received furosemide in the 48 h preceding the trial.

Eleven of the 28 patients were extubated 11 ± 3.3 days after SBT; eight patients were discharged from ICU with tracheostomy. All 22 patients who succeeded weaning were discharged from ICU. Overall, ICU mortality was 18% (9/50).

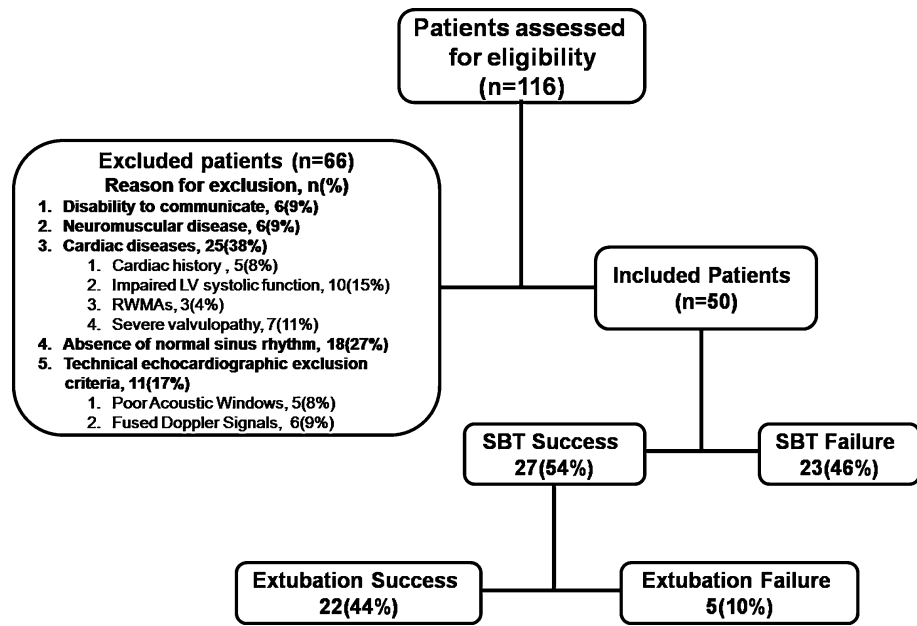
LV function assessed by Doppler echocardiography

Baseline DE-estimated diastolic function is shown in Fig. 2. Twenty-three (46%) patients presented normal function, seven (14%) demonstrated mild (grade I) and 20 (40%) moderate to severe (grade II–III) diastolic dysfunction. Patients with diastolic dysfunction were older (*P* < 0.001), with a history of COPD (*P* < 0.001), arterial hypertension (*P* = 0.021), and presented thicker LV walls (*P* < 0.001), increased LV mass index (*P* < 0.001) and relative wall thickness (RWT) (*P* < 0.001); they also presented decreased mitral annular velocities *E_m* (*P* < 0.001) and *S_m* (*P* ≤ 0.003), and increased *E/E_m* ratios (*P* ≤ 0.001) at pre-SBT. Overall, LV diastolic function tended to deteriorate between pre-SBT and end-SBT (*P* = 0.051). Six patients (12%) presented significant LV diastolic deterioration moving towards higher LV diastolic function grades; overall, no patient improved LV function grade. Fluid balance (mean of 3 days preceding SBT) was associated neither with the degree of diastolic function at pre-SBT (ANOVA, *P* = 0.45), nor with SBT-induced changes in lateral *E/E_m* (*P* = 0.68). COPD patients presented higher pre-SBT *E/E_m* values (*P* ≤ 0.003) and greater SBT-induced increases in averaged *E/E_m* (*P* = 0.05).

Relationship between clinical and echocardiographic parameters and weaning

Baseline clinical and echocardiographic characteristics relating to weaning outcomes are shown in Table 3. Acute changes (Δ%) in DE markers reflecting ventricular function and LV filling pressure alterations during SBT did not differ between patients who succeeded in and

Fig. 1 Flowchart of weaning outcomes in the study population. *LV* left ventricular, *RWMAs* regional wall motion abnormalities, *SBT* spontaneous breathing trial



patients who failed the weaning trial (see online data supplement for details).

Diagnostic performance of clinical and echocardiographic parameters

The diagnostic performance and threshold values of various clinical and cardiac Doppler indices at pre-SBT in predicting weaning outcome are shown in Table 4. Pre-SBT lateral E/E_m greater than 7.8 demonstrated the greatest performance in predicting weaning failure among various variables; pre-SBT lateral E/E_m AUC was 0.86, specificity 100%, and positive predictive value 100%. Notably, pre-SBT E/E_m greater than 7.8 and E/V_p greater than 1.6 could accurately identify weaning failure and need for reintubation in the subgroup of our patients ($n = 27$) who had successful SBT initially (sensitivity 100 and 80% and specificity 100 and 82%, for E/E_m and E/V_p , respectively). ROC curves for pre-SBT values of lateral E/E_m ratio, E/V_p ratio, RSBI, and PFP in predicting weaning failure are presented in Fig. 3; E/E_m differed significantly from the other three markers. Multivariate analysis showed that best predictors for weaning failure were E/E_m OR (95% CI) 5.62 (1.17–26.96), $P = 0.03$ and LV mass index 1.13 (0.98–1.3), $P = 0.09$ (see online data supplement for comparison among ROC curves and for multivariate analysis).

Discussion

The present study suggests that LV diastolic dysfunction and increased LV filling pressures may be involved in the

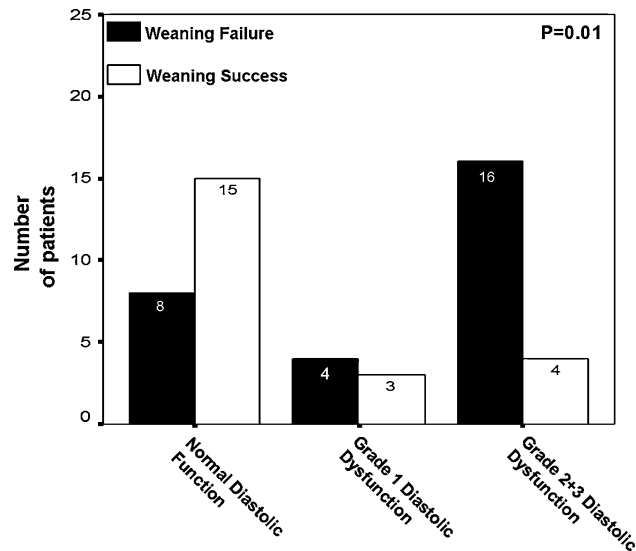


Fig. 2 Outcome of weaning in all 50 participants according to the degree of diastolic dysfunction as assessed by DE at pre-SBT (differences between groups were compared by one-way ANOVA)

pathophysiology of weaning failure in ICU patients with preserved systolic function. Patients who failed weaning presented significantly worse diastolic function and increased E/E_m or E/V_p ratios before SBT, compared with those with successful weaning. Furthermore, our findings suggest that DE indices may predict the outcome of weaning from mechanical ventilation in ICU patients with preserved LV systolic function. Thus, E/E_m ratios at pre-SBT presented the greatest diagnostic performance in predicting weaning failure (AUC 0.86) among several established weaning markers, such as the RSBI [3, 16] or

Table 3 Univariate analysis of baseline (pre-SBT) clinical and echocardiographic variables in patients with success and failure of weaning

	Weaning		<i>P</i>
	Success (<i>N</i> = 22)	Failure (<i>N</i> = 28)	
Baseline clinical variables			
Age (years)	43.2 (3.4)	59.6 (3.2)	0.001**
Sex (male/female)	18 (82)/4 (18)	15 (54)/13 (46)	0.07
COPD patients	5 (23)	16 (57)	0.014*
Neuro-critical patients	14 (64)	12 (43)	0.14
APACHE II score (on admission)	16.7 (0.7)	18.5 (0.7)	0.07
Duration of MV prior to SBT (days)	18.1 (1.8)	14.3 (1.9)	0.15
Tracheostomy tube/orotracheal tube	17 (77)/5 (23)	19 (68)/9 (32)	0.46
Fluid balance (mean of 3 days prior to SBT) (mL/day)	5 (112)	188 (108)	0.25
Mean BP (mmHg)	99.3 (2.8)	99.9 (2.6)	0.88
Heart rate (beats/min)	86.7 (2.6)	93 (2.2)	0.07
<i>f</i> (breaths/min)	19.3 (1.1)	23.9 (1.1)	0.007**
<i>PS</i> (cmH ₂ O)	12.7 (0.5)	14.4 (0.4)	0.006**
<i>PFP</i> (cmH ₂ O × breaths/min)	251 (21)	342 (19)	0.002**
<i>f</i> / <i>V</i> _T (RSBI)	45.2 (3.7)	66.1 (4.7)	0.002**
pH	7.43 (0.006)	7.46 (0.004)	0.001**
PaO ₂ (mmHg)	125 (7.4)	111.3 (4.9)	0.12
PaO ₂ /FiO ₂ ratio	340 (19)	284 (15.5)	0.024*
2D echocardiographic measurements			
LVEF (%)	58.8 (1.3)	60.4 (1.2)	0.36
IVSWT (mm)	9 (0.2)	9.9 (0.2)	0.002**
LVPWT (mm)	8.8 (0.2)	9.8 (0.2)	0.005**
LV mass (Penn) (g/m ²)	88.4 (5.3)	113.4 (5.2)	0.002**
RWT	0.37 (0.009)	0.4 (0.008)	0.06
RVFAC (%)	52.2 (1.9)	49.1 (2.2)	0.31
RVEDA/LVEDA	0.48 (0.01)	0.48 (0.01)	0.71
Mitral inflow pulsed-Doppler analysis			
<i>E</i> (cm/s)	74 (2)	90.6 (3.6)	0.001**
<i>A</i> (cm/s)	62 (3)	80 (4.3)	0.003**
TDI measurements at lateral mitral annulus			
<i>S</i> _m (cm/s)	12.7 (0.7)	10.4 (0.6)	0.01**
<i>E</i> _m (cm/s)	14.5 (0.9)	9.8 (0.8)	<0.001**
“Conventional” Doppler markers of LV filling pressures			
<i>E</i> / <i>A</i>	1.26 (0.08)	1.24 (0.1)	0.89
DTE (ms)	205 (5)	194 (9)	0.31
“Advanced” Doppler-derived surrogates of LV filling pressures			
Lateral <i>E</i> / <i>E</i> _m	5.35 (0.23)	10.83 (0.94)	<0.001**
Septal <i>E</i> / <i>E</i> _m	7.66 (0.55)	11.55 (0.8)	<0.001**
Averaged <i>E</i> / <i>E</i> _m	6.18 (0.28)	10.98 (0.83)	<0.001**
<i>E</i> / <i>V</i> _p	1.32 (0.09)	1.79 (0.11)	0.004**

Continuous data are presented as mean (SE), categorical data as *n* (%). See online supplement for more detailed results for all baseline clinical and echocardiographic variables

f respiratory frequency; *PS* pressure support; *PFP* pressure frequency product (respiratory frequency × level of pressure support); *V*_T tidal volume; *RSBI* rapid shallow breathing index;

IVSWT interventricular septum wall thickness; *LVPWT* left ventricular posterior wall thickness; *E* and *A* pulsed wave Doppler early and late transmitral left ventricular filling wave velocity, respectively; *A*_m TDI-derived peak late diastolic velocity; other abbreviations as per Tables 1 and 2

* *P* < 0.05, ** *P* < 0.01, 2-tailed *t* test for mean values

pressure–frequency product [17]. In this respect, performing DE before the initiation of an SBT may be of value in weaning-related decisions by assisting clinical data.

Diastolic dysfunction is frequent in ICU patients [23–26]. However, data assessing the role of diastolic dysfunction in weaning from MV are sparse [12–14]. We hypothesized that diastolic dysfunction might be a cause of unsuccessful weaning in ICU patients with preserved LV systolic function. We found that patients with

moderate to severe LV diastolic dysfunction at pre-SBT exhibited significantly increased weaning failure rates (Fig. 2). We also noted that during SBT, LV diastolic function tended to deteriorate. A plausible explanation for the relationship between diastolic dysfunction and weaning failure might be that patients with diastolic dysfunction present diastolic heart failure and pulmonary edema on spontaneous ventilation. Transition from positive-pressure ventilation to spontaneous breathing induces negative intrathoracic pressures with increased venous

Table 4 Diagnostic performance of baseline clinical characteristics and Doppler echocardiographic parameters in predicting weaning failure

	AUC (95% CI)	Cutoff value	Se (%)	Sp (%)	PPV (%)	NPV (%)	Ac (%)
Age (years)	0.76 (0.62–0.9)**	>53	75	73	81	71	76
APACHE II	0.67 (0.51–0.82)*	>18.5	61	73	74	59	66
f/V_T (RSBI)	0.75 (0.61–0.88)**	>58.5	64	81	82	64	72
PPF	0.76 (0.62–0.89)**	>287	71	68	74	65	70
Lateral E_m (cm/s)	0.8 (0.68–0.92)**	<12.5	75	64	72	67	70
Averaged E_m (cm/sec)	0.78 (0.65–0.91)**	<10.5	71	73	77	67	72
Septal S_m (cm/s)	0.74 (0.6–0.88)**	<9.5	82	64	64	82	72
Lateral E/E_m	0.86 (0.75–0.96)**	>7.8	79	100	100	79	88
Septal E/E_m	0.81 (0.68–0.93)**	>7.93	86	73	80	80	80
Averaged E/E_m	0.86 (0.75–0.97)**	>8	79	96	96	78	86
E/V_p	0.74 (0.6–0.87)**	>1.51	75	73	78	70	74

AUC area under the curve; Se sensitivity; Sp specificity; PPV positive predictive value; NPV negative predictive value; Ac accuracy; f/V_T ratio of respiratory frequency to tidal volume; other abbreviations as per Tables 1, 2, and 3

* $P < 0.05$, ** $P < 0.01$

return and sympathetic overstimulation [5] that may increase LV preload–afterload [7, 8] and cardiac workload [6], thus impairing LV compliance; weaning-induced myocardial ischemia [9, 10] or RV dysfunction [11], may also deteriorate pre-existing LV diastolic dysfunction and may increase LV filling pressures and thus provoke pulmonary edema. Notably, it was recently reported that patients with diastolic dysfunction may present impaired diastolic reserve under stressful conditions [27], and this possibly explains weaning intolerance. In line with the above, other authors suggested that weaning outcomes may improve with the application of strategies aiming to manage heart failure (i.e., diuretics, nitroglycerin) [17, 28, 29].

In our cohort, we found that patients who failed weaning presented known precipitating factors for LV diastolic dysfunction (i.e., age, arterial hypertension, increased wall thickness and LV mass, and COPD) [30]. Furthermore, we found that they presented DE indices (increased E/E_m and E/V_p) indicating significantly elevated LV filling pressures, and decreased S_m and E_m mitral annular velocities compared with patients with successful weaning. Although decreased S_m is usually found in patients with systolic dysfunction [31], depressed S_m velocities are also found in patients with normal systolic function who present diastolic heart failure [32]. Given the association between depressed S_m and E_m values and ischemia [33], as well as the fact that rate–pressure product (heart rate \times systolic blood pressure), a global index of myocardial workload and oxygen demand [6], increased more during failing trials (data shown in online data supplement—Table E4), our findings suggest that myocardial ischemia might also be implicated in weaning failure. However, ST-segment dynamic deviations occurred in only four patients in our study. In this respect, a hypothesis that myocardial ischemia is an explanation for these phenomena might be challenged and this has to be taken into consideration in the interpretation of our results.

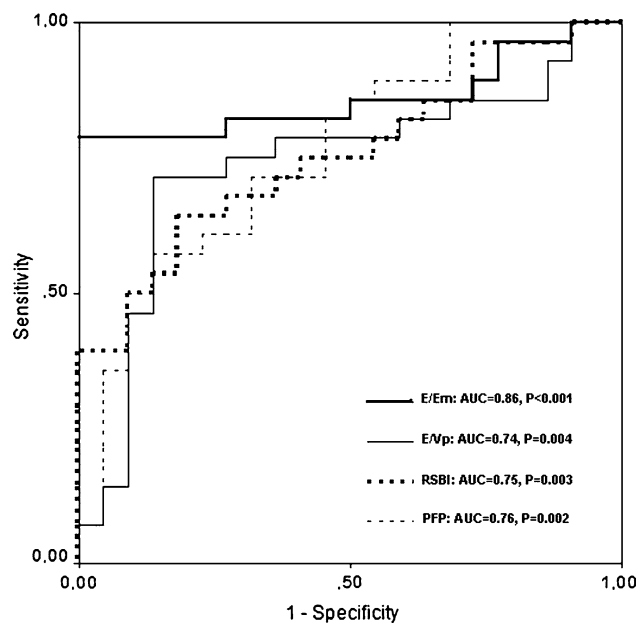


Fig. 3 ROC curves for two echocardiographic pre-SBT markers of left ventricular filling pressures (E/E_m , E/V_p) and two clinical parameters (RSBI and PFP) in predicting weaning failure. E/E_m ratio of transmitral inflow E-wave velocity to TDI-derived early diastolic velocity at the lateral border of the mitral annulus; E/V_p transmitral E-wave velocity to color M-mode Doppler velocity of propagation ratio, RSBI rapid shallow breathing index, PFP pressure–frequency product, AUC area under the curve

Another potential mechanism of impaired LV diastolic function in weaning, especially in COPD patients, is that increases in RV afterload because of hypoxemia and pulmonary dynamic hyperinflation, together with a simultaneous increase in venous return, may cause RV dysfunction. The latter may impede LV diastolic filling through an interventricular interdependence mechanism [11]. RV dysfunction might have been implicated in the weaning of our COPD subpopulation, whose DE markers

of LV filling pressures were indicative of significantly elevated values at baseline and greater changes during SBT compared with patients without COPD. Positive fluid balance that could have contributed to volume overload and increased LV filling pressures was not associated with the degree of diastolic function at pre-SBT or with SBT/weaning outcomes in our study. Thus, one could assume that LV diastolic dysfunction may play a more important role than volume state in SBT-induced increases of LV filling pressures.

In the present study, “advanced” DE markers of LV filling pressures (E/E_m and E/V_p) at pre-SBT presented considerable diagnostic performance in predicting weaning failure; E/E_m greater than 7.8 at the lateral border of mitral annulus and E/V_p greater than 1.51 before the initiation of SBT predicted unsuccessful weaning with sensitivity (%) and specificity(%) of 79/75 and 100/73, respectively (Table 4). These indices retained their predictive value even in the subset of patients who initially passed SBT; therefore, E/E_m and E/V_p at pre-SBT could identify patients who will probably fail to remain in spontaneous breathing regardless of SBT result. However, SBT-induced acute alterations in E/E_m and E/V_p , although tending to reach statistical significance, were not predictive of weaning outcomes (online data supplement—Tables E1, E4). A plausible explanation might be that myocardial viscoelastic properties at baseline are impaired in patients who failed weaning; LV filling pressures, as indicated by increased E/E_m and E/V_p , may be higher in these patients at baseline, close to a critical point beyond which pulmonary edema develops. Our results support previous studies [13, 17] which reported that the echocardiographic (or by cardiac biomarkers) assessment of LV function before the initiation of weaning trial may be of greater importance than monitoring the acute changes that occur during SBT.

Interestingly, other investigators have reported similar E/E_m values as predictors of invasively estimated increased LV filling pressures, either in MV [34] or during SBT [12], whereas another study [13] with similar design to ours showed that E/E_m was significantly higher in patients who could not be weaned from the ventilator compared with those who did. However, in the latter study, patients with increased E/E_m ratios also presented significantly decreased LV ejection fractions; our findings point out that increased E/E_m ratio can also be found in patients without overt cardiac disease.

Our findings are based on the study of DE indices and one could argue that the diagnostic performance of E/E_m and E/V_p as reliable estimates of LV filling

pressures and the feasibility of accurate acquisition of E/V_p have been challenged [19]. We certainly acknowledge this skepticism. However, we used lateral E/E_m ratios, which enable the prediction of increased LV filling pressures in patients with LVEF greater than 50% [35], even in the clinical settings of mechanical ventilation [36] or diastolic heart failure [37]. On the other hand, E/V_p ratios may be helpful in the evaluation of LV diastolic function in patients with normal systolic function [35, 38] even during acute changes in cardiac loading conditions [39]. Yet, reproducible V_p measurements can be obtained by following published recommendations [19].

Our investigation provided evidence suggesting that LV diastolic dysfunction may be implicated in the pathophysiologic mechanisms related to unsuccessful weaning in our cohort. However, it should be underlined here that it is not a “scoop” that patients with normal LV diastolic function succeed in weaning, as almost half of our patients in the grade I group also failed; unfortunately, there were only seven patients in this subgroup and other markers that might have intensified our findings, such as brain natriuretic peptide (BNP) plasma levels [17, 18], were not assessed, and these are limitations of our study. It should also be noted that our results did not derive from the wider ICU population requiring weaning from MV, but from an inhomogeneous population with many COPD and neuro-critical patients (overall 84%) ventilated for more than 72 h; in such populations weaning failure rates are expected to be high [2].

In conclusion, our findings suggest that in patients with no overt cardiac disease and with preserved LV systolic function, LV diastolic dysfunction may play an important role in weaning failure. DE indices, particularly E/E_m at the lateral border of the mitral annulus, may be helpful to identify patients at high risk of weaning failure. We acknowledge that further evidence is required before recommending echocardiography as a standard tool during weaning in the everyday clinical setting in the ICU. However, our data provide evidence suggesting that DE indices may assist in weaning from MV and may guide weaning-related therapeutic interventions (i.e., volume contraction, nitrate infusion) in the future.

Acknowledgments J. P. drafted the manuscript and participated in the collection of data; D. M. drafted part of the manuscript and revised the manuscript for important intellectual content; T. S., D. K., and A. K. participated in the collection of data; El. Z. performed statistical analysis; E. Z. performed off-line echocardiographic analysis; E. Z. and G. K. contributed equally in the study design and motivated the study.

References

1. Boles JM, Bion J, Connors A, Herridge M, Marsh B, Melot C, Pearl R, Silverman H, Stanchina M, Vieillard-Baron A, Welte T (2007) Weaning from mechanical ventilation. *Eur Respir J* 29:1033–1056
2. Vallverdú I, Calaf N, Subirana M, Net A, Benito S, Mancebo J (1998) Clinical characteristics, respiratory functional parameters, and outcome of a two-hour T-piece trial in patients weaning from mechanical ventilation. *Am J Respir Crit Care Med* 158:1855–1862
3. Yang KL, Tobin MJ (1991) A prospective study of indexes predicting the outcome of trials of weaning from mechanical ventilation. *N Engl J Med* 324:1445–1450
4. Lamia B, Monnet X, Teboul JL (2005) Weaning-induced cardiac dysfunction. In: *Yearbook of intensive care and emergency medicine*. 1st edn. Springer, Heidelberg, pp 239–245
5. Kennedy SK, Weintraub RM, Skillman JJ (1977) Cardiorespiratory and sympathoadrenal responses during weaning from controlled ventilation. *Surgery* 82:233–240
6. Gobel FL, Norstrom LA, Nelson RR, Jorgensen CR, Wang Y (1978) The rate-pressure product as an index of myocardial oxygen consumption during exercise in patients with angina pectoris. *Circulation* 57:549–556
7. McGregor M (1979) Current concepts: pulsus paradoxus. *N Engl J Med* 301:480–482
8. Buda AJ, Pinsky MR, Ingels NB Jr, Daughters GT 2nd, Stinson EB, Alderman EL (1979) Effect of intrathoracic pressure on left ventricular performance. *N Engl J Med* 301:453–459
9. Hurford WE, Favorito F (1995) Association of myocardial ischemia with failure to wean from mechanical ventilation. *Crit Care Med* 23:1475–1480
10. Frazier SK, Brom H, Widener J, Pender L, Stone KS, Moser DK (2006) Prevalence of myocardial ischemia during mechanical ventilation and weaning and its effects on weaning success. *Heart Lung* 35:363–373
11. Boussuges A, Pinet C, Molénat F, Burnet H, Ambrosi P, Badier M, Sainty JM, Orehek J (2000) Left atrial and ventricular filling in chronic obstructive pulmonary disease. An echocardiographic and Doppler study. *Am J Respir Crit Care Med* 162:670–675
12. Lamia B, Maizel J, Ochagavia A, Chemla D, Osman D, Richard C, Teboul JL (2009) Echocardiographic diagnosis of pulmonary artery occlusion pressure elevation during weaning from mechanical ventilation. *Crit Care Med* 37:1696–1701
13. Caille V, Amiel JB, Charron C, Belliard G, Vieillard-Baron A, Vignon P (2010) Echocardiography: a help in the weaning process. *Crit Care* 14:R120
14. Bernard F, Denault A, Babin D, Goyer C, Couture P, Couturier A, Buithieu J (2001) Diastolic dysfunction is predictive of difficult weaning from cardiopulmonary bypass. *Anesth Analg* 92:291–298
15. Schiller NB, Shah PM, Crawford M, DeMaria A, Devereux R, Feigenbaum H, Gutgesell H, Reichek N, Sahn D, Schnittger I et al (1989) Recommendations for quantitation of the left ventricle by two-dimensional echocardiography. American Society of Echocardiography Committee on Standards, Subcommittee on Quantitation of Two-Dimensional Echocardiograms. *J Am Soc Echocardiogr* 2:358–367
16. El-Khatib MF, Jamaledine GW, Khoury AR, Obeid MY (2002) Effect of continuous positive airway pressure on the rapid shallow breathing index in patients following cardiac surgery. *Chest* 121:475–479
17. Mekontso-Dessap A, de Prost N, Girou E, Braconnier F, Lemaire F, Brun-Buisson C, Brochard L (2006) B-type natriuretic peptide and weaning from mechanical ventilation. *Intensive Care Med* 32:1529–1536
18. Grasso S, Leone A, De Michele M, Anaclerio R, Cafarelli A, Ancona, Stripoli T, Bruno F, Pugliese P, Dambrosio M, Dalfino L, Di Serio F, Fiore T (2007) Use of N-terminal pro-brain natriuretic peptide to detect acute cardiac dysfunction during weaning failure in difficult-to-wean patients with chronic obstructive pulmonary disease. *Crit Care Med* 35:96–105
19. Nagueh SF, Appleton CP, Gillebert TC, Marino PN, Oh JK, Smiseth OA, Waggoner AD, Flachskampf FA, Pellikka PA, Evangelisa A (2009) Recommendations for the evaluation of left ventricular diastolic function by echocardiography. *Eur J Echocardiogr* 10:165–193
20. Hanley JA, McNeil BJ (1982) The meaning and use of the area under a receiver operating characteristic (ROC) curve. *Radiology* 143:29–36
21. DeLong ER, DeLong DM, Clarke-Pearson DL (1988) Comparing the areas under two or more correlated receiver operating characteristic curves: a nonparametric approach. *Biometrics* 44:837–845
22. Rabe KF, Hurd S, Anzueto A, Barnes PJ, Buist SA, Calverley P, Fukuchi Y, Jenkins C, Rodriguez-Roisin R, van Weel C, Zielinski J (2007) Global initiative for chronic obstructive lung disease. Global strategy for the diagnosis, management, and prevention of chronic obstructive pulmonary disease: GOLD executive summary. *Am J Respir Crit Care Med* 176:532–555
23. Sturges DJ, Marwick TH, Joyce CJ, Jones M, Venkatesh B (2007) Tissue Doppler in critical illness: a retrospective cohort study. *Crit Care* 11:R97
24. Jafri SM, Lavine S, Field BE, Bahorzian MT, Carlson RW (1990) Left ventricular diastolic function in sepsis. *Crit Care Med* 18:709–714
25. Wu CK, Lee JK, Chiang FT, Yang CH, Huang SW, Hwang JJ, Lin JL, Tseng CD, Chen JJ, Tsai CT (2011) Plasma levels of tumor necrosis factor- α and interleukin-6 are associated with diastolic heart failure through downregulation of sarcoplasmic reticulum Ca²⁺ ATPase. *Crit Care Med* 39:984–992
26. Miyamoto M, McClure DE, Schertel ER, Andrews PJ, Jones GA, Pratt JW, Ross P, Myerowitz PD (1998) Effects of hypoproteinemia-induced myocardial edema on left ventricular function. *Am J Physiol* 274:H937–H944
27. Chattopadhyay S, Alamgir MF, Nikitin NP, Rigby AS, Clark AL, Cleland JG (2010) Lack of diastolic reserve in patients with heart failure and normal ejection fraction. *Circ Heart Fail* 3:35–43
28. Lemaire F, Teboul JL, Cinotti L, Giotto G, Abrouk F, Steg G, Macquin-Mavier I, Zapol WM (1988) Acute left ventricular dysfunction during unsuccessful weaning from mechanical ventilation. *Anesthesiology* 69:171–179
29. Routsis C, Stanopoulos I, Zakyntinos E, Politis P, Papas V, Zervakis D, Zakyntinos S (2010) Nitroglycerin can facilitate weaning of difficult-to-wean chronic obstructive pulmonary disease patients: a prospective interventional non-randomized study. *Crit Care* 14:R204
30. European Study Group on Diastolic Heart Failure (1998) How to diagnose diastolic heart failure. *Eur Heart J* 19:990–1003

-
31. Yuda S, Inaba Y, Fujii S, Kokubu N, Yoshioka T, Sakurai S, Nishizato K, Fujii N, Hashimoto A, Uno K, Nakata T, Tsuchihashi K, Miura T, Ura N, Natori H, Shimamoto K (2006) Assessment of left ventricular ejection fraction using long-axis systolic function is independent of image quality: a study of tissue Doppler imaging and m-mode echocardiography. *Echocardiography* 23:846–852
 32. Vinereanu D, Nicolaidis E, Tweddel AC, Fraser AG (2005) “Pure” diastolic dysfunction is associated with long-axis systolic dysfunction. Implications for the diagnosis and classification of heart failure. *Eur J Heart Fail* 7:820–828
 33. García-Fernández MA, Azevedo J, Moreno M, Bermejo J, Pérez-Castellano N, Puerta P, Desco M, Antoranz C, Serrano JA, García E, Delcán JL (1999) Regional diastolic function in ischaemic heart disease using pulsed wave Doppler tissue imaging. *Eur Heart J* 20:496–505
 34. Vignon P, AitHssain A, François B, Preux PM, Pichon N, Clavel M, Frat JP, Gastinne H (2008) Echocardiographic assessment of pulmonary artery occlusion pressure in ventilated patients: a transoesophageal study. *Crit Care* 12:R18
 35. Rivas-Gotz C, Manolios M, Thohan V, Nagueh SF (2003) Impact of left ventricular ejection fraction on estimation of left ventricular filling pressures using tissue Doppler and flow propagation velocity. *Am J Cardiol* 91:780–784
 36. Combes A, Arnoult F, Trouillet JL (2004) Tissue Doppler imaging estimation of pulmonary artery occlusion pressure in ICU patients. *Intensive Care Med* 30:75–81
 37. Kasner M, Westermann D, Steendijk P, Gaub R, Wilkenshoff U, Weitmann K, Hoffmann W, Poller W, Schultheiss HP, Pauschinger M, Tschöpe C (2007) Utility of Doppler echocardiography and tissue Doppler imaging in the estimation of diastolic function in heart failure with normal ejection fraction: a comparative Doppler-conductance catheterization study. *Circulation* 116:637–647
 38. González-Vilchez F, Ayuela J, Ares M, Mata NS, González AG, Durán RM (2002) Comparison of Doppler echocardiography, color M-mode Doppler, and Doppler tissue imaging for the estimation of pulmonary capillary wedge pressure. *J Am Soc Echocardiogr* 15:1245–1250
 39. Licker M, Cikirikcioglu M, Inan C, Cartier V, Kalangos A, Theologou T, Cassina T, Diaper J (2010) Preoperative diastolic function predicts the onset of left ventricular dysfunction following aortic valve replacement in high-risk patients with aortic stenosis. *Crit Care* 14:R101