

## Reduced Production of Creatinine Limits Its Use as Marker of Kidney Injury in Sepsis

Kent Doi, Peter S.T. Yuen, Christoph Eisner, Xuzhen Hu, Asada Leelahavanichkul, Jürgen Schnermann, and Robert A. Star

National Institute of Diabetes and Digestive and Kidney Diseases, National Institutes of Health, Bethesda, Maryland

### ABSTRACT

Although diagnosis and staging of acute kidney injury uses serum creatinine, acute changes in creatinine lag behind both renal injury and recovery. The risk for mortality increases when acute kidney injury accompanies sepsis; therefore, we sought to explore the limitations of serum creatinine in this setting. In mice, induction of sepsis by cecal ligation and puncture in bilaterally nephrectomized mice increased markers of nonrenal organ injury and serum TNF- $\alpha$ . Serum creatinine, however, was significantly lower in septic animals than in animals subjected to bilateral nephrectomy and sham cecal ligation and puncture. Under these conditions treatment with chloroquine decreased nonrenal organ injury markers but paradoxically increased serum creatinine. Sepsis dramatically decreased production of creatinine in nephrectomized mice, without changes in body weight, hematocrit, or extracellular fluid volume. In conclusion, sepsis reduces production of creatinine, which blunts the increase in serum creatinine after sepsis, potentially limiting the early detection of acute kidney injury. This may partially explain why small absolute increases in serum creatinine levels are associated with poor clinical outcomes. These data support the need for new biomarkers that provide better measures of renal injury, especially in patients with sepsis.

*J Am Soc Nephrol* 20: 1217–1221, 2009. doi: 10.1681/ASN.2008060617

Serum creatinine is used clinically to detect and evaluate acute kidney injury (AKI) and chronic kidney disease (CKD),<sup>1,2</sup> although the limitations of serum creatinine for the early detection and accurate estimation of renal injury are widely known. In AKI, serum creatinine does not accurately reflect the GFR because the patient is not in steady state.<sup>3</sup> Furthermore, serum creatinine is also influenced by tubular creatinine secretion and by nonrenal factors such as muscle mass, liver function, and nonrenal (gastrointestinal) elimination.

Sepsis remains a serious problem in critically ill patients, and mortality from sepsis is increased dramatically when complicated by AKI; therefore, early de-

tection and accurate evaluation of AKI is important in patients with sepsis. We modified the cecal ligation and puncture (CLP) mouse sepsis model to make it more clinically relevant, and our model developed sepsis-induced AKI.<sup>4–6</sup> We found that serum creatinine increased to a lesser extent in CLP (approximately 0.5 mg/dl) than ischemia/reperfusion or cisplatin administration (>1 mg/dl) within 24 h of injury. To explore nonrenal factors that might account for this disparity, we used bilateral nephrectomy (BNx), a technique used recently by others to study the contribution of the kidney to cytokine metabolism and acute lung injury.<sup>7</sup>

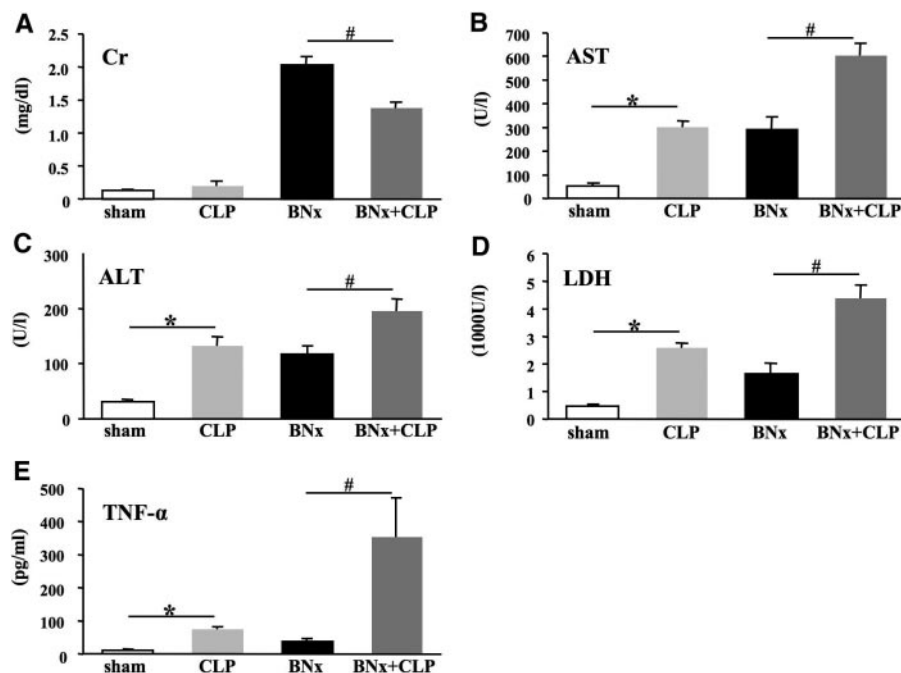
First, we evaluated sepsis in bilaterally nephrectomized mice. We induced sepsis by CLP surgery with 8-mm cecal ligation, which causes modest sublethal sepsis in normal outbred CD-1 mice.<sup>8</sup> All animals survived until they were killed at 18 h after surgery. CLP surgery in non-nephrectomized mice caused a numerically small, but not significant increase of serum creatinine (sham<sub>BNx</sub>+CLP group). As expected, we found large increases of serum creatinine in the BNx+sham<sub>CLP</sub> group; however, induction of sepsis at the time of BNx significantly decreased serum creatinine (BNx+CLP group) compared with nonseptic BNx alone (BNx+sham<sub>CLP</sub> group; Figure 1A), raising doubt about whether serum creatinine accurately reflects impaired kidney function during sepsis. In contrast, nonrenal organ injury markers (aspartate aminotransferase [AST], alanine aminotransferase [ALT], and lactate dehydrogenase [LDH]) and serum TNF- $\alpha$  were higher in the BNx+CLP group than in the BNx+sham<sub>CLP</sub> group, confirming the presence of severe sepsis (Figure 1, B through E).

Received June 18, 2008. Accepted December 26, 2008.

Published online ahead of print. Publication date available at [www.jasn.org](http://www.jasn.org).

**Correspondence:** Dr. Robert A. Star, Renal Diagnostics and Therapeutics Unit, NIDDK, NIH, 10 Center Drive, Room 3N108, Bethesda, MD 20892-1268. Phone: 301-496-6325; Fax: 301-402-0014; E-mail: [robert\\_star@nih.gov](mailto:robert_star@nih.gov)

Copyright © 2009 by the American Society of Nephrology



**Figure 1.** BNx and subsequent sepsis induced by CLP. (A through E) Serum creatinine (A), AST (B), ALT (C), LDH (D), and serum TNF- $\alpha$  (E) were measured at 18 h after surgery ( $n = 5$  to 6 per group). Data are means  $\pm$  SEM. \* $P < 0.05$  versus Sham BNx/Sham CLP; # $P < 0.05$  versus BNx.

We next examined whether treatment of sepsis would affect this observation by using chloroquine, which decreases mortality and improves organ function in a model of CLP-induced sepsis.<sup>9</sup> Chloroquine treatment of septic bilaterally nephrectomized mice (BNx+CLP+CQ) decreased nonrenal organ injury markers (AST, ALT, and LDH) and TNF- $\alpha$  compared with vehicle-treated mice (BNx+CLP); however, serum creatinine was paradoxically higher in treated animals (Figure 2). As a control, chloroquine did not cause any changes in the BNx+sham<sub>CLP</sub> group. We reported recently that chloroquine reduced mortality and sepsis-induced AKI, including renal pathologic damage.<sup>9</sup> At first glance, these results seem contradictory: Serum creatinine is reduced by chloroquine when kidneys are intact yet increased by chloroquine in the absence of any kidneys. In the septic state, chloroquine alters nonrenal metabolism of creatinine, which is confirmed by completely removing urinary creatinine excretion by BNx; therefore, in both untreated and treated septic mice, serum creatinine

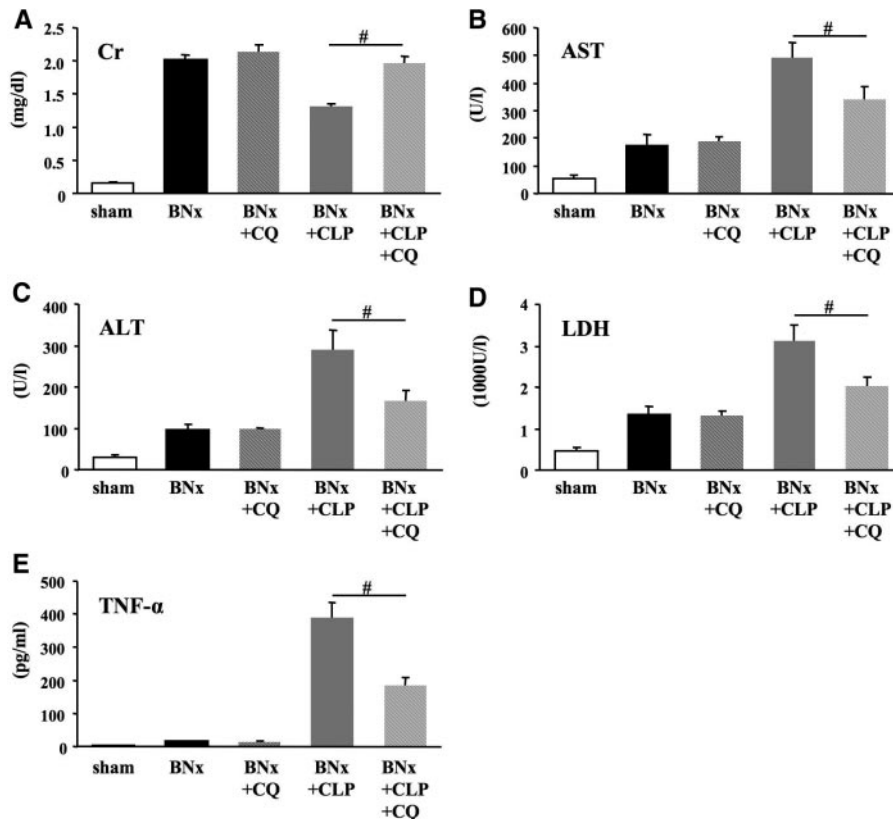
changes in the opposite direction as markers of injury from other organs, challenging the underlying assumptions behind the use of serum creatinine as a biomarker for AKI.

To determine whether changes in fluid compartments could account for these observations, we measured body weight changes and hematocrit, as well as volume of distribution (Vd) for FITC-inulin and creatinine. There was no significant difference in body weight change or hematocrit (body weight change: BNx+sham<sub>CLP</sub>  $2.3 \pm 1.0\%$  [ $n = 5$ ], BNx+CLP  $1.7 \pm 0.6\%$  [ $n = 5$ ]; hematocrit: BNx+sham<sub>CLP</sub>  $36.0 \pm 0.9\%$  [ $n = 6$ ], BNx+CLP  $34.6 \pm 1.3\%$  [ $n = 6$ ]). Creatinine space, a marker of total body water, was not different between the BNx+CLP and the BNx+sham<sub>CLP</sub> groups (Figure 3A). FITC-inulin space, a marker of extracellular fluid volume, was only modestly decreased in the BNx+CLP group (Figure 3A). We then estimated creatinine production from the increase in serum creatinine between time 0 and 14 h and the creatinine Vd. We found that sepsis significantly de-

creased estimated creatinine production by  $29.7 \pm 4.3\%$  (Figure 3B). Direct measurement of creatinine production<sup>10</sup> would be necessary to confirm our result.

Creatinine is the end product of creatine metabolism. Alteration in creatinine production can alter serum creatinine levels. For example, N-acetylcysteine, which has been shown to protect from radiocontrast medium-induced nephropathy,<sup>11</sup> decreases serum creatinine levels of healthy humans without changing serum cystatin C levels.<sup>12</sup> This suggests that N-acetylcysteine directly reduces creatinine production. We suspected that creatinine production was reduced, on the basis of the small increase in serum creatinine after CLP sepsis versus renal ischemia-reperfusion. In this study, we found that sepsis reduced creatinine production, which would largely account for the slow rise in serum creatinine. Serum creatinine could fall as a result of reduced production or renal or extrarenal clearance (creatinine degradation or gastrointestinal excretion).<sup>10</sup> Creatine is synthesized from guanidinoacetic acid primarily in the liver,<sup>13</sup> enters skeletal muscle *via* a membrane transporter, and accumulates there because it is phosphorylated by creatine kinase. Creatine is converted into creatinine by a nonenzymatic cyclization throughout the body but especially in skeletal muscle as a result of the high abundance of creatine. Creatinine production can fall because of reductions in lean body mass, dietary intake of creatine, or liver disease.<sup>14</sup> Indeed, the BNx+CLP group showed significantly higher liver enzymes and pathologic changes such as extensive loss of hepatocyte glycogen stores and bland cytoplasm (data not shown).<sup>4</sup> Intensive care unit patients have a progressive decline in creatinine production as a result of a loss of muscle mass worsened by subclinical hepatic injury.<sup>15</sup>

Sepsis reduces energy production and metabolic rate because of hormonal and inflammatory mediators,<sup>16</sup> which could reduce muscle production of creatinine. As we previously reported, CLP induced severe septic shock with hypodynamic circulation failure and reduced micro-



**Figure 2.** Effects of chloroquine treatment on BNx+CLP. (A through E) Serum creatinine (A), AST (B), ALT (C), LDH (D), and serum TNF- $\alpha$  (E) were measured at 18 h after surgery ( $n = 8$  to 9 per each BNx group;  $n = 5$  per sham group). Sham is Sham BNx/Sham CLP. Data are mean  $\pm$  SEM. # $P < 0.05$  versus BNx+CLP.

vascular capillary perfusion,<sup>6,8,17</sup> which could reduce muscle creatinine release, liver creatine-to-creatinine conversion, and/or release into the circulation. In this study, the numerical decrease in creatinine space in the BNx+CLP group is consistent with reduced cellular perfusion in sepsis. Because our CLP model has a prolonged period of hypodynamic shock,<sup>8</sup> our results may not translate to patients with hyperdynamic shock. Examination of creatinine production in hyperdynamic animal sepsis models<sup>18–20</sup> would be needed to determine the extent that microvascular perfusion may contribute to the decrease in creatinine production during hyperdynamic sepsis.

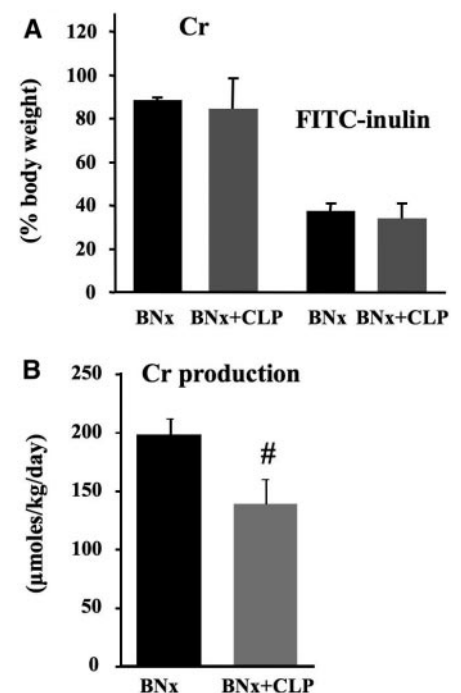
Sepsis-induced hypothermia may also decrease nonenzymatic conversion of creatine to creatinine. CLP sepsis causes profound hypothermia, which is a marker of reduced metabolism.<sup>21</sup> In this study, we found that the severe hypothermia in the BNx+CLP animals was

attenuated by chloroquine treatment (data not shown). Creatinine is converted from creatine and creatine phosphate nonenzymatically, and the rate of nonenzymatic conversion of creatine to creatinine depends on the pH and temperature; a 3°C decrease would reduce this conversion by 15 to 20%.<sup>22</sup> In addition, decreasing metabolism by systemic injection of drugs such as 5'-adenosine monophosphate (AMP)<sup>23</sup> or 2-deoxy-D-glucose (2-DG)<sup>24</sup> instead of sepsis to bilaterally nephrectomized mice also caused hypothermia and decreases of serum creatinine 18 h after surgery (Supplemental Figure 1).

Our findings may have direct clinical significance. As a result of decreased creatinine production, serum creatinine is an even poorer indicator of renal damage in sepsis because its reduced production further magnifies the kinetic disparity between apparent and actual renal function; serum creatinine underestimates

renal damage to a greater extent in sepsis than in other forms of AKI. The reduced creatinine production may also explain why such small increases in serum creatinine are associated with dramatic increases in morbidity and mortality of human patients.<sup>25,26</sup> Higher serum creatinine was paradoxically associated with better survival in AKI in several clinical studies.<sup>27–29</sup> Underestimation of renal function changes by “inappropriately low” serum creatinine will delay the early diagnosis of AKI, impede recognition of an additional organ injury for prognostic purposes, and suppress entry into clinical trials. Although the timing of renal replacement therapy initiation (including prophylactic dialysis)<sup>30</sup> is controversial, renal replacement therapy may need to be started at relatively lower serum creatinine than other types of AKI.

The paradoxical effect of chloroquine on creatinine in bilaterally nephrectomized animals also has implications for clinical trial design. Chloroquine im-



**Figure 3.** Volume of distribution (Vd) and estimated creatinine production. (A) Vd of creatinine and FITC-inulin were measured from 14 to 18 h after surgery. (B) Estimated creatinine production was measured at 0 to 14 h after surgery. Data are means  $\pm$  SEM ( $n = 5$  to 6 per group). # $P < 0.05$  versus BNx.

proved sepsis and sepsis-induced AKI by survival analysis and pathologic examination.<sup>9</sup> We hypothesize that chloroquine restores creatinine metabolism indirectly by reducing the severity of sepsis, perhaps by improvement in muscle metabolism and/or liver function. Although serum creatinine is widely used as an end point for AKI clinical studies, the effects of treatment of sepsis and sepsis-induced AKI might be incorrectly ascertained if kidney damage in sepsis is evaluated only by serum creatinine. Confirmation with other end points such as injury biomarkers and mortality and morbidity rate should be required, especially for clinical studies on sepsis.

In conclusion, we demonstrated that sepsis reduced creatinine production, thereby blunting the expected increases of serum creatinine in bilaterally nephrectomized mice. Moreover, treatment with chloroquine reduced improved sepsis but paradoxically increased serum creatinine in bilaterally nephrectomized mice, suggesting a normalization of creatinine production. Our data indicate that evaluation of kidney injury by serum creatinine alone would cause a severe underestimation of renal injury, serious failure of early diagnosis of sepsis-induced AKI, and incorrect ascertainment of drug effects. Newer biomarkers that more accurately measure renal injury are needed, especially in patients with sepsis.

## Concise Methods

### BNx and Subsequent CLP

All animal experiments were conducted in accordance with an animal study protocol approved by the National Institute of Diabetes and Digestive and Kidney Diseases animal care and use committee. Eight-week-old male CD-1 mice (Charles River Laboratories, Wilmington, MA) weighing 30 to 35 g were allowed food and water *ad libitum*. For each experiment, all of the animals received BNx or its sham operation (sham<sub>BNx</sub>), and CLP or its sham operation (sham<sub>CLP</sub>). Under isoflurane anesthesia, the kidneys were removed by flank approach, or kidneys were isolated in sham surgeries. Immediately after BNx, sepsis was induced by CLP surgery. A 4-0 silk

ligature was placed 8 mm from the cecal tip, and the cecum was punctured twice with a 21-G needle and gently squeezed. At the end of surgery, 1 ml of prewarmed normal saline was injected intraperitoneally, and mice were subsequently kept at 29°C. Mice were treated with fluid and antibiotic at 6 h after surgery by subcutaneous injection of imipenem/cilastatin (14 mg/kg) in 1 ml of normal saline and killed at 18 h after for collecting specimens. Mice were not allowed food and water after the surgery.

### Chloroquine, AMP, and 2-DG

#### Administration

Chloroquine (Sigma-Aldrich, St. Louis, MO) dissolved in normal saline at the dosage of 50 mg/kg was administered orally at 3 h before surgery.<sup>9</sup> In other animals, AMP (Sigma-Aldrich) at the dosage of 1.5 mmol/kg or 2-DG (Sigma-Aldrich) at the dosage of 400 mg/kg dissolved in 0.3 ml of normal saline was injected intraperitoneally at 0, 3, and 6 h after surgery. All of the animals in the other group received the same amount of vehicle at the indicated times.

### Measurements of Blood

#### Chemistries, Hematocrit, and Serum Cytokine

Serum creatinine was measured by HPLC, which has a coefficient of variation of 1.6 to 5.1%.<sup>31</sup> AST, ALT, and LDH were measured using an autoanalyzer (Hitachi 917; Boehringer-Mannheim, Indianapolis, IN). Hematocrit was analyzed by an automated hematology analyzer (Abbott Cell-Dyn 3500; GMI, Ramsey, MN). Serum TNF- $\alpha$  was measured by ELISA (R&D Systems, Minneapolis, MN).

### Measurement of Vd and Creatinine Production

Inulin-labeled FITC preparation and measurement of plasma concentration was performed as described previously.<sup>32</sup> Inulin-labeled FITC was injected intravenously at 30 min after surgery, and its Vd was calculated from the amount injected and the plasma concentration at 18 h after injection. Creatinine Vd and production were measured using injection of a known amount of unlabeled creatinine, as previously reported in bilaterally nephrectomized dogs.<sup>33</sup> Creatinine (30 mg/kg) was injected intravenously at 14 h after surgery, and blood samples were

collected before injection and 4 h later. Vd of creatinine in nephrectomized mice was calculated from the 4-h increase in serum creatinine in the vehicle-injected mice ( $n = 6$  to 8 per group). The creatinine production in each mouse was estimated from the time 0 to 14-h increase in serum creatinine multiplied by the creatinine Vd determined in that mouse. Creatinine at 0 h was assumed to be distributed in a Vd of 60% of body weight, which is approximately the same of total body water.<sup>34</sup> Because the normal mouse creatinine is so low compared with the creatinine after BNx, the calculated creatinine production is not sensitive to the time 0 Vd. Nevertheless, a more precise value could be directly measured after equilibrating the mouse creatinine compartment with radiolabel.

### Statistical Analysis

Results are expressed as means  $\pm$  SEM. Differences between groups were analyzed by ANOVA followed by Fisher least significant difference test. These calculations were done using SigmaStat 3.10 (Systat Software, Richmond, CA). The null hypothesis was rejected at  $P < 0.05$ .

## ACKNOWLEDGMENTS

This research was supported by the Intramural Research Program of the National Institutes of Health, National Institute of Diabetes and Digestive and Kidney Diseases. K.D. is a Japan Society for the Promotion of Science Postdoctoral Fellow for Research Abroad.

## DISCLOSURES

None.

## REFERENCES

- Mehta RL, Kellum JA, Shah SV, Molitoris BA, Ronco C, Warnock DG, Levin A: Acute kidney injury network: Report of an initiative to improve outcomes in acute kidney injury. *Crit Care* 11: R31, 2007
- K/DOQI clinical practice guidelines for bone metabolism and disease in chronic kidney disease. *Am J Kidney Dis* 42: S1–S201, 2003
- Star RA: Treatment of acute renal failure. *Kidney Int* 54: 1817–1831, 1998
- Dear JW, Yasuda H, Hu X, Hieny S, Yuen PS, Hewitt SM, Sher A, Star RA: Sepsis-induced



- organ failure is mediated by different pathways in the kidney and liver: Acute renal failure is dependent on myd88 but not renal cell apoptosis. *Kidney Int* 69: 832–836, 2006
5. Miyaji T, Hu X, Yuen PS, Muramatsu Y, Iyer S, Hewitt SM, Star RA: Ethyl pyruvate decreases sepsis-induced acute renal failure and multiple organ damage in aged mice. *Kidney Int* 64: 1620–1631, 2003
  6. Yasuda H, Yuen PS, Hu X, Zhou H, Star RA: Simvastatin improves sepsis-induced mortality and acute kidney injury via renal vascular effects. *Kidney Int* 69: 1535–1542, 2006
  7. Hoke TS, Douglas IS, Klein CL, He Z, Fang W, Thurman JM, Tao Y, Dursun B, Voelkel NF, Edelstein CL, Faubel S: Acute renal failure after bilateral nephrectomy is associated with cytokine-mediated pulmonary injury. *J Am Soc Nephrol* 18: 155–164, 2007
  8. Doi K, Hu X, Yuen PS, Leelahavanichkul A, Yasuda H, Kim SM, Schnermann J, Jonassen TE, Frokiaer J, Nielsen S, Star RA: AP214, an analogue of alpha-melanocyte-stimulating hormone, ameliorates sepsis-induced acute kidney injury and mortality. *Kidney Int* 73: 1266–1274, 2008
  9. Yasuda H, Leelahavanichkul A, Tsunoda S, Dear JW, Takahashi Y, Ito S, Hu X, Zhou H, Doi K, Childs R, Klinman DM, Yuen PS, Star RA: Chloroquine and inhibition of toll-like receptor 9 protect from sepsis-induced acute kidney injury. *Am J Physiol Renal Physiol* 294: F1050–F1058, 2008
  10. Mitch WE, Collier VU, Walser M: Creatinine metabolism in chronic renal failure. *Clin Sci (Lond)* 58: 327–335, 1980
  11. Tepel M, van der Giet M, Schwarzfeld C, Laufer U, Liermann D, Zidek W: Prevention of radiographic-contrast-agent-induced reductions in renal function by acetylcysteine. *N Engl J Med* 343: 180–184, 2000
  12. Hoffmann U, Fischereder M, Kruger B, Drobnik W, Kramer BK: The value of N-acetylcysteine in the prevention of radiocontrast agent-induced nephropathy seems questionable. *J Am Soc Nephrol* 15: 407–410, 2004
  13. Walker JB: Creatine: Biosynthesis, regulation, and function. *Adv Enzymol Relat Areas Mol Biol* 50: 177–242, 1979
  14. Cocchetto DM, Tschanz C, Bjornsson TD: Decreased rate of creatinine production in patients with hepatic disease: Implications for estimation of creatinine clearance. *Ther Drug Monit* 5: 161–168, 1983
  15. Wells M, Lipman J: Measurements of glomerular filtration in the intensive care unit are only a rough guide to renal function. *S Afr J Surg* 35: 20–23, 1997
  16. Singer M, De Santis V, Vitale D, Jeffcoate W: Multiorgan failure is an adaptive, endocrine-mediated, metabolic response to overwhelming systemic inflammation. *Lancet* 364: 545–548, 2004
  17. Piper RD, Pitt-Hyde M, Li F, Sibbald WJ, Potter RF: Microcirculatory changes in rat skeletal muscle in sepsis. *Am J Respir Crit Care Med* 154: 931–937, 1996
  18. Di Giandomasso D, Ma CN, Bellomo R: Vital organ blood flow during hyperdynamic sepsis. *Chest* 124: 1053–1059, 2003
  19. Fink MP, MacVittie TJ, Casey LC: Inhibition of prostaglandin synthesis restores normal hemodynamics in canine hyperdynamic sepsis. *Ann Surg* 200: 619–626, 1984
  20. Langenberg C, Wan L, Egi M, May CN, Bellomo R: Renal blood flow and function during recovery from experimental septic acute kidney injury. *Intensive Care Med* 33: 1614–1618, 2007
  21. Ebong S, Call D, Nemzek J, Bolgos G, Newcomb D, Remick D: Immunopathologic alterations in murine models of sepsis of increasing severity. *Infect Immun* 67: 6603–6610, 1999
  22. Fuller NJ, Elia M: Factors influencing the production of creatinine: Implications for the determination and interpretation of urinary creatinine and creatine in man. *Clin Chim Acta* 175: 199–210, 1988
  23. Zhang J, Kaasik K, Blackburn MR, Lee CC: Constant darkness is a circadian metabolic signal in mammals. *Nature* 439: 340–343, 2006
  24. Freinkel N, Metzger BE, Harris E, Robinson S, Mager M: The hypothermia of hypoglycemia: Studies with 2-deoxy-D-glucose in normal human subjects and mice. *N Engl J Med* 287: 841–845, 1972
  25. Chertow GM, Burdick E, Honour M, Bonventre JV, Bates DW: Acute kidney injury, mortality, length of stay, and costs in hospitalized patients. *J Am Soc Nephrol* 16: 3365–3370, 2005
  26. Lassnigg A, Schmidlin D, Mouhieddine M, Bachmann LM, Druml W, Bauer P, Hiesmayr M: Minimal changes of serum creatinine predict prognosis in patients after cardiothoracic surgery: A prospective cohort study. *J Am Soc Nephrol* 15: 1597–1605, 2004
  27. Mehta RL, Pascual MT, Gruta CG, Zhuang S, Chertow GM: Refining predictive models in critically ill patients with acute renal failure. *J Am Soc Nephrol* 13: 1350–1357, 2002
  28. Paganini EP, Larive B, Kanagasundaram NS: Severity scores and outcomes with acute renal failure in the ICU setting. *Contrib Nephrol* 181–195, 2001
  29. Uchino S, Bellomo R, Morimatsu H, Morgera S, Schetz M, Tan I, Bouman C, Macedo E, Gibney N, Tolwani A, Doig GS, Oudemans van Straaten H, Ronco C, Kellum JA: External validation of severity scoring systems for acute renal failure using a multinational database. *Crit Care Med* 33: 1961–1967, 2005
  30. Palevsky PM: Renal replacement therapy I: Indications and timing. *Crit Care Clin* 21: 347–356, 2005
  31. Yuen PS, Dunn SR, Miyaji T, Yasuda H, Sharma K, Star RA: A simplified method for HPLC determination of creatinine in mouse serum. *Am J Physiol Renal Physiol* 286: F1116–F1119, 2004
  32. Qi Z, Whitt I, Mehta A, Jin J, Zhao M, Harris RC, Fogo AB, Breyer MD: Serial determination of glomerular filtration rate in conscious mice using FITC-inulin clearance. *Am J Physiol Renal Physiol* 286: F590–F596, 2004
  33. Schloerb PR: Total body water distribution of creatinine and urea in nephrectomized dogs. *Am J Physiol* 199: 661–665, 1960
  34. Canaud B, Garred LJ, Argiles A, Flavien JL, Bouloux C, Mion C: Creatinine kinetic modelling: A simple and reliable tool for the assessment of protein nutritional status in haemodialysis patients. *Nephrol Dial Transplant* 10: 1405–1410, 1995

Supplemental information for this article is available online at <http://www.jasn.org/>.