

REVIEW ARTICLE

Julie R. Ingelfinger, M.D., *Editor*

Opioid Tolerance in Critical Illness

J.A. Jeevendra Martyn, M.D., Jianren Mao, M.D., Ph.D.,
and Edward A. Bittner, M.D., Ph.D.

CRITICALLY ILL PATIENTS IN THE INTENSIVE CARE UNIT (ICU) REQUIRE urgent and complex interventions that expose them to twice as many medications as the number encountered on general medical wards.¹ Opioids have been the mainstay of pain control and sedation in the ICU, despite substantial adverse consequences that continue to plague their use.² Long-term opioid use leads to tolerance (i.e., less susceptibility to the effects of the opioid, which can result in a need for higher and more frequent doses to achieve the same analgesic effect), physical dependence, and opioid-withdrawal symptoms during weaning and contributes to the development of chronic pain later and opioid-induced hyperalgesia (a paradoxical hypersensitivity to pain).³⁻⁵ Opioid tolerance can be seen during all types of critical illnesses; the magnitude, however, seems exaggerated in patients who have had major trauma (e.g., burn injury), in patients requiring prolonged mechanical ventilation, and in pediatric patients.⁶⁻⁸ The development of tolerance is due in part to the large doses needed to control pain in these critically ill patients. However, the inflammatory response to opioids themselves, seen in patients in the medical ICU and those in the surgical ICU, plays an important role in tolerance. This review describes the indications for opioid therapy in patients in the ICU, opioid signal transduction during short-term and long-term use, the role of inflammation and opioid-mediated innate immune responses in tolerance, and current and potential mitigation strategies for opioid tolerance. Sedative-anxiolytic drugs, which are adjuncts to analgesia, are not within the scope of this review.

From the Department of Anesthesiology, Critical Care, and Pain Medicine, Massachusetts General Hospital, Shriners Hospital for Children, and Harvard Medical School — all in Boston. Address reprint requests to Dr. Martyn at the Department of Anesthesia, Critical Care, and Pain Medicine, Massachusetts General Hospital, 51 Blossom St., Rm. 206, Boston, MA 02114, or at jmartyn@mgh.harvard.edu.

N Engl J Med 2019;380:365-78.

DOI: 10.1056/NEJMra1800222

Copyright © 2019 Massachusetts Medical Society.

TISSUE AND SPINAL CORD RESPONSES TO INJURY

Most patients in the ICU have some form of tissue injury that causes local and often systemic inflammatory responses. These responses launch a cascade of events, including release of proinflammatory substances and activation of spinal cord N-methyl-D-aspartate (NMDA) receptors (Fig. 1).⁹ Concomitantly, endogenous antinociceptive mechanisms also become operative. Centrally, the inhibitory opioidergic, serotonergic, and noradrenergic pathways are activated, which can reduce nociception. Leukocytes released at the injury site secrete endogenous opioid peptides that interact with the injury-induced opioid receptors that are up-regulated along nerve terminals and reduce pain.¹⁰ However, injury-induced reduction of inhibitory control over pain by means of glycine and γ -aminobutyric acid receptors enhances central sensitization.¹¹ These local and central changes lead to exaggerated basal and procedural pain, referred to as hyperalgesia (exaggerated responses to painful stimuli such as a pinprick) and allodynia (pain responses to nonpainful stimuli such as touch).^{9,10} These changes are consistent with the body's need to produce essential warning signs and withdrawal responses during nociception.

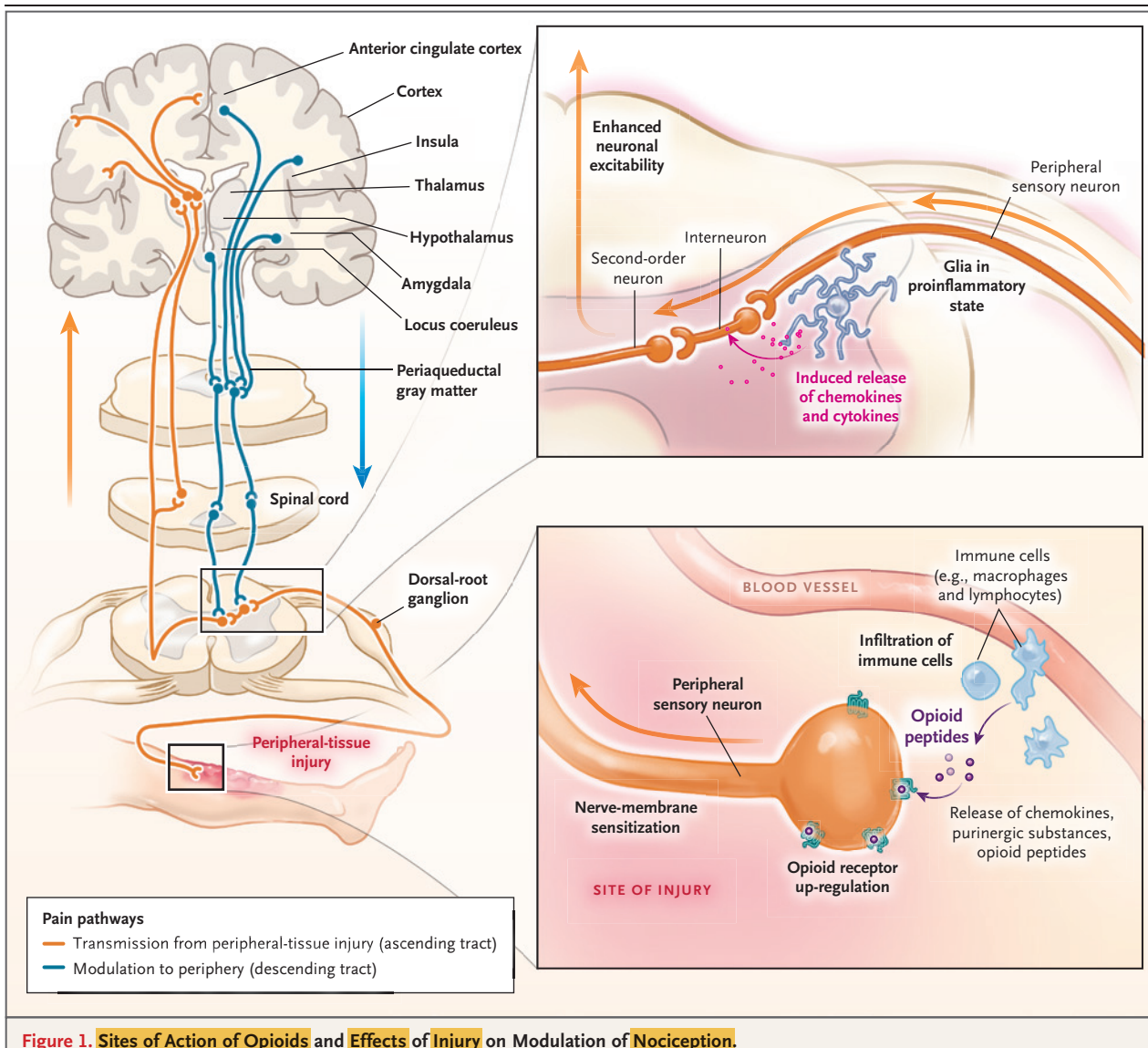


Figure 1. Sites of Action of Opioids and Effects of Injury on Modulation of Nociception.

Sites of action of opioids for pain relief include the brain (cortex, thalamus, hypothalamus, locus coeruleus, amygdala, and periaqueductal gray matter), spinal cord, and peripheral-nerve membrane. Transmission of pain sensation (nociception) from the peripheral-tissue injury to the central nervous system occurs through the ascending spinothalamic tract to the thalamus and then to the somatosensory cortex (orange). Descending inhibitory tracts (blue) from the brain and other regions, including the rostroventral medulla, modulate nociception. Nociception can be amplified by dorsal-root ganglia and changes in the dorsal horn of the spinal cord (top inset). The afferent neurons are sensitized by the sprouting of new axons around the cell bodies of dorsal-root ganglia, as well as by infiltrating macrophages, which release inflammatory substances. Neuron projections from dorsal-root ganglia to the dorsal horn amplify the pain by the release of other pro-nociceptive mediators (e.g., calcitonin gene-related peptide), activation of *N*-methyl-D-aspartate receptors, and the increase in glutamate levels. Second-order neurons transmit these signals upstream to the brain (orange). Injury to tissues (bottom inset) results in local and often systemic inflammatory responses, which prime the peripheral sensory neurons and dorsal-root ganglia to exaggerated nociception by up-regulation or modulation of ligand-gated and voltage-gated ion channels. Mu-opioid receptors are newly expressed throughout the nerve membrane. Extravasated circulating leukocytes (e.g., macrophages and lymphocytes) release proinflammatory mediators, further sensitizing the neurons to pain. These leukocytes also release antinociceptive endogenous opioid peptides, which bind to the up-regulated opioid receptors on the nerve, attenuating pain.

INDICATIONS FOR OPIOID USE AND CONSEQUENCES OF INADEQUATE ANALGESIA

Moderate-to-severe pain, which generally accompanies critical illness, is often distressing and frequently underrecognized.¹² The underlying illness or surgery, placement of penetrating invasive tubes or catheters, and other routine intensive care procedures are recognized sources of pain.¹³ Patients in the ICU often cannot communicate about their pain because of the combined effects of endotracheal intubation, sedation, neuromuscular blockers, altered mental status, physical restraints, and other disease-related complications. Therefore, it is imperative for caregivers to assess pain severity reliably through the use of standardized pain-assessment tools validated for use in the ICU.¹⁴ Although opioids represent the primary pharmacologic therapy for moderate-to-severe pain, there are numerous other indications for opioid use, including sedation (Table S1 in the Supplementary Appendix, available with the full text of this article at NEJM.org). Analgesia-first sedation (also known as analgosedation) is a strategy for managing pain and discomfort that relies on analgesic agents first, before sedatives such as benzodiazepines. Analgesia-first sedation results in improved outcomes, including fewer days on a ventilator, as compared with combined analgesic-sedative regimens,^{15,16} and has been recommended in clinical practice guidelines for the ICU.²

Unrelieved pain affects physiological and psychological function and is associated with both short- and long-term consequences, most of which are due to exacerbation of the stress responses induced by catecholamines, glucocorticoids, and antidiuretic-hormone release.^{17,18} Stress activation of the hypothalamic-pituitary-adrenal axis and the renin-angiotensin-aldosterone axis can lead to fluid retention, generalized edema, and hypertension. Other adverse consequences of stress include impaired tissue oxygenation, wound healing, and immunity^{17,18}; increased myocardial and total oxygen consumption and muscle catabolism; and neuroinflammatory priming.¹⁹⁻²² Unrelieved pain has psychological consequences, including anxiety, depression, impaired sleep, and

demoralization, and is a risk factor for subsequent post-traumatic stress disorder.^{22,23} Both patients and family members report pain as the most stressful experience during their time in the ICU and after discharge.²⁴ Some patients, particularly those who have undergone major surgery, have persistent pain after discharge from the ICU that contributes to a reduced quality of life.²⁵ Risk factors for the development of persistent pain are poorly controlled, high-intensity, acute pain; preoperative pain or anxiety; long-term opioid use; a relatively long ICU stay; and major surgery.²⁶

SIDE EFFECTS OF OPIOID THERAPY

Side effects of opioid therapy are categorized as either peripheral (e.g., constipation, urinary retention, and bronchospasm) or central (e.g., oversedation, respiratory depression, hypotension, nausea, truncal rigidity, and cough suppression). Opioid-induced vasodilatation and hypotension can increase fluid requirements after trauma.²⁷ In contrast, vasodilatation can be beneficial during disease-, anxiety-, and pain-induced hypertension. The respiratory and cough-suppressive effects can also be beneficial in the ICU setting (Table S1 in the Supplementary Appendix). Other detrimental effects that are often overlooked include inappropriate immune modulation through neuroendocrine pathways or direct effects through receptors that are present on immunocytes.^{28,29} That opioids impair immune function has aroused concern during the care of patients with cancer in the ICU,³⁰ but the role of opioids in cancer recurrence is far from clear.³¹ The negative effect of intolerable pain on immune function is well documented; however, the more immediate concern is the alleviation of pain and suffering and avoidance of their deleterious consequences.³¹

Opioids can contribute to delirium, poor sleep quality, and unintended sedation; this is particularly true in patients in the ICU, because of altered drug clearance, concomitant drug therapy, and central metabolic dysfunction. The strategy of analgesia-first sedation in trauma and burn populations in the ICU has been associated with a reduced risk of delirium,³² whereas opioids

in combination with benzodiazepines, particularly in the elderly, have been associated with an increased risk of delirium.³³ Conversely, complete lack of sedation can result in more cases of delirium than sedation with daily interruption,³⁴ although the lack of sedation may simply result in more cases of delirium being identified.

PHARMACOKINETIC COMPONENTS OF OPIOID TOLERANCE

Pharmacokinetic studies of opioid use during critical illness are limited. Autoinduction of cytochrome P-450 enzyme and enhanced drug clearance do not occur with long-term opioid use and therefore cannot explain dose escalation (i.e., the need to increase the dose to maintain equipotent analgesic effects).³⁵ However, cytochrome P-450 inducers increase clearance of some drugs (e.g., methadone), resulting in subtherapeutic plasma levels, which may be misinterpreted as pharmacodynamic tolerance (i.e., tolerance due to changes in sites of action).³⁶ Similarly, during the hyperdynamic phase of trauma and compensated sepsis, the enhanced elimination kinetics of “flow dependent” drugs (e.g., fentanyl and morphine) could cause dose escalation.³⁷

Inflammation increases the expression of α_1 -acid glycoprotein, an acute-phase reactant protein, which binds some drugs. Since methadone has a high affinity for α_1 -acid glycoprotein, there is a decreased free fraction of methadone in the plasma.^{36,38} Despite minimal binding of fentanyl and morphine to α_1 -acid glycoprotein,^{36,38} tolerance still occurs. Thus, increased glycoprotein binding contributes minimally to opioid dose escalation. The P-glycoprotein transporter that is present in brain capillaries controls drug efflux from the central nervous system. Long-term administration of oxycodone, morphine, and alfentanil, but not methadone, up-regulates P-glycoprotein expression, causing decreased drug penetration in the central nervous system and attenuated analgesia.³⁶ Similarly, tumor necrosis factor α increases expression and activity of P-glycoprotein.³⁹ Together, these observations imply that critical illness-related cytokine release and opioid administration may tighten the

permeability of the P-glycoprotein-controlled blood-brain barrier, reducing the efficacy of some opioids.

PHARMACODYNAMIC COMPONENTS OF OPIOID TOLERANCE

METABOLITE CONTRIBUTIONS

Opioid metabolism can result in metabolites that enhance or antagonize the analgesic effect or have no pharmacologic effect. In the case of morphine, the parent drug is active, although its metabolites have contrasting effects: normorphine is inactive, and morphine-6-glucuronide is more potent than morphine, whereas morphine-3-glucuronide is considered to have hyperalgesic effects that oppose the analgesic effects of morphine and of morphine-6-glucuronide.⁴⁰ During renal failure or dose escalation of morphine (or hydromorphone), as seen in the ICU, markedly increased morphine-3-glucuronide levels can counteract the analgesic potency of morphine and morphine-6-glucuronide.⁴⁰ The hyperalgesic effects of morphine-3-glucuronide are simultaneously opioid receptor-dependent and opioid receptor-independent, as shown in a study involving knockout mice⁴¹ and studies involving naloxone.²⁸ The receptor-independent effects are mediated by activation of both microglia toll-like receptors and NMDA receptors.²⁸ The magnitude of the contribution of morphine-3-glucuronide to a deficiency of analgesia is controversial.

OPIOID-RECEPTOR SIGNALING DURING SHORT-TERM AND LONG-TERM OPIOID USE

Most clinically used opioids act through mu-opioid receptors, which belong to the G-protein-coupled receptors family, and transmit downstream signals through heterotrimeric $G\alpha\beta\gamma$ -proteins. When an opioid binds to the mu-opioid receptor, the receptor-associated $G\alpha\beta\gamma$ -protein dissociates into $G\alpha$ and $G\beta\gamma$ subunits. Concomitantly, the mu-opioid receptor becomes phosphorylated by G-protein-coupled receptor kinase,³ which recruits β -arrestin protein and binds it to the receptor, sometimes leading to receptor internalization (Fig. 2). These processes lead to desensitization (conversion from a responsive-receptor state to a decreased-signaling state), which partly explains

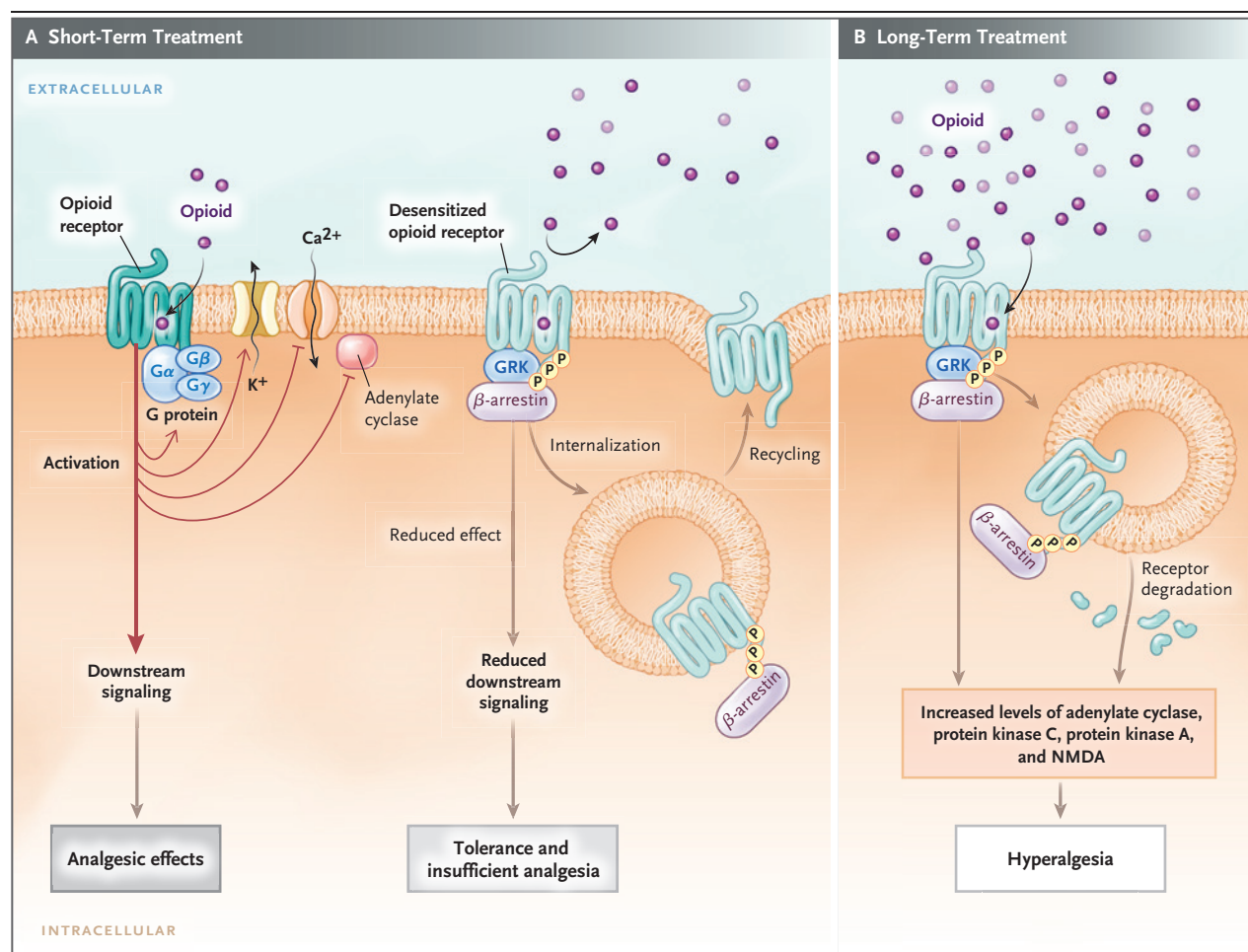


Figure 2. Opioid-Receptor Signaling during Short-Term Therapy and Long-Term Therapy.

In short-term treatment, the binding of an opioid to its receptor (Panel A) causes downstream G-protein–coupled receptors, composed of $G\alpha\beta\gamma$ subunits, to dissociate into $G\alpha$ and $G\beta\gamma$ subunits. The dissociated G-protein subunits inhibit voltage-gated calcium channels by means of reduced transmitter release, activate inward-rectifying potassium channels (causing hyperpolarization of the membrane), and inhibit downstream adenylate cyclase enzymes, decreasing cyclic adenosine monophosphate levels. These events reduce excitability and nociception and result in analgesic effects. When an opioid binds to its receptor, it becomes an immediate substrate for phosphorylation by G-protein–coupled receptor kinase (GRK), which leads to recruitment and binding of β -arrestin protein to the receptor. This results in desensitization and sometimes endocytosis of the receptor; each of these events decreases the responses to opioids, inducing tolerance and insufficient analgesia. Opioid-receptor signaling terminates when the opioid is displaced from the receptor. After the stimulus (i.e., the agonist) is withdrawn, the desensitized receptor recovers over time (minutes to hours, depending on the agonist), $G\alpha$ rebinds to $G\beta\gamma$ and once again forms $G\alpha\beta\gamma$, and the endocytosed receptor is reexpressed on the plasma membrane in a resensitized state. In long-term treatment (Panel B), escalating doses of opioids and concomitant persistent activation of the receptor lead to aggravation of the tolerance by receptor-dependent and receptor-independent intracellular signaling changes, which include up-regulation of the anti-opioid (pro-nociceptive) signaling pathways. The sustained β -arrestin binding to the receptor often leads to internalization, degradation, and down-regulation of membrane receptor number, further decreasing response to opioids. Receptor down-regulation occurs with some opioids (e.g., fentanyl) but not others (e.g., morphine). Phosphorylation by other kinases (e.g., protein kinases A and C), increased adenylate cyclase activity (with increased cyclic adenosine monophosphate levels), activation of *N*-methyl-D-aspartate (NMDA) receptor, and down-regulation of glutamate receptors (increased glutamate levels) are all implicated in the imbalance between pro-nociceptive and antinociceptive pathways, which results in attenuated analgesic effects, aggravated pain behaviors, increased tolerance, and opioid-induced hyperalgesia.

acute tolerance.⁴² The desensitized receptors recover over time (minutes to hours, depending on the agonist) after the stimulus has been withdrawn, and the endocytosed receptors are recycled to the plasma membrane in a resensitized state.

Long-term opioid use leads to exaggerated opioid tolerance, which is characterized by escalating dose requirements to maintain analgesia, and subsequently contributes to opioid-induced hyperalgesia. Tolerance to the analgesic effects of opioids (and euphoria) develops faster than tolerance to respiratory depression, which explains the increased risk of hypoventilation with dose escalation during tolerance. Both duration and dose appear to affect the development of tolerance; infusions induce tolerance faster than intermittent therapy.⁴³ The potent opioid remifentanyl induces tolerance more quickly than the less potent meperidine. Persons with substance-use disorder who are receiving maintenance therapy with methadone or buprenorphine are observed to have opioid-induced hyperalgesia, which is absent in those who are not receiving opioids.⁴⁴

Prominent signaling changes develop during the continued presence of exogenous or endogenous ligands because the central nervous system has intrinsic mechanisms to prevent overstimulation or understimulation. The typical response of G-protein-coupled receptors to chronic agonists is receptor internalization and down-regulation together with intracellular signaling changes, leading to decreased analgesia.^{45,46} Additional cellular adaptations during long-term opioid use include induction of systems that attenuate analgesic effects. These systems elicit adaptive responses to persistent opioid-induced inhibitory downstream signaling.⁴⁵ The adaptations encompass the activation of NMDA receptors, down-regulation of glutamate transporter, conversion from a state of decreased to a state of increased adenylate cyclase activity³ (Fig. 2), and increased transduction through other nociception channels.^{3,4} The formation of opioid-receptor heterodimers that bind opioids has also been implicated in opioid-induced hyperalgesia.⁴⁷ Thus, activation of the analgesia-attenuating system at multiple sites during long-term opioid therapy leads to an imbalance between pro-nociceptive and antinociceptive pathways, resulting in reduc-

tion of analgesia, increased tolerance, and opioid-induced hyperalgesia.

INNATE IMMUNE RESPONSES IN THE CENTRAL NERVOUS SYSTEM

Injury- or inflammation-related pain can become aggravated or long-lasting, features that cannot be explained by neuronal activation alone. In the central nervous system, the glia (astroglia and microglia) play a major role in central sensitization.^{3,28} Persistent activation of the dorsal horn of the spinal cord by the injury-induced barrage of nociceptive input and the associated release of damage-associated molecular patterns (DAMPs) activate glia, which release inflammatory mediators that enhance the excitability of adjacent neurons (Fig. 3).⁴⁸ Although acute stress results in stress-induced analgesia, persistent sympathetic overactivity leads to stress-induced hyperalgesia.⁴⁹ Repetitive stress can also lead to central and peripheral leukocyte priming and release of inflammatory mediators,^{21,22,28} causing exaggerated pain behaviors.^{50,51} The stress-induced catecholamine surge releases immunocytes, including phenotypical inflammatory M1 monocytes (as opposed to antiinflammatory M2 monocytes). This release compounds inflammatory-mediator responses.⁵² Stress-associated glucocorticoid release can function as DAMPs, promoting activation of the glia.^{22,53} Superimposition of bacterial inflammation and release of pathogen-associated molecular patterns further augment leukocyte-related toll-like receptor activation and cytokine release, which can lead to nociceptor sensitization.⁵⁴ Systemic inflammatory diseases can also lead to neuroinflammation,^{55,56} with selective breakdown of the blood-brain barrier to inflammatory M1 monocytes, which further exaggerate neuroinflammation, modulating both mood and nociception.²⁰⁻²²

Opioids, even in the absence of systemic inflammation, cause neuroinflammation by activating toll-like receptors in glia and other immune cells that permeate the blood-brain barrier.^{3,28,52} The cytokine release from activated immune cells leads to exaggerated nociception; antagonism of toll-like receptors or their knockout in mice abrogates the hyperalgesia.^{28,46} Similarly, specific antagonists of putative inflammatory mediators (e.g., interleukin-1 β) attenuate hyperalgesia. Other

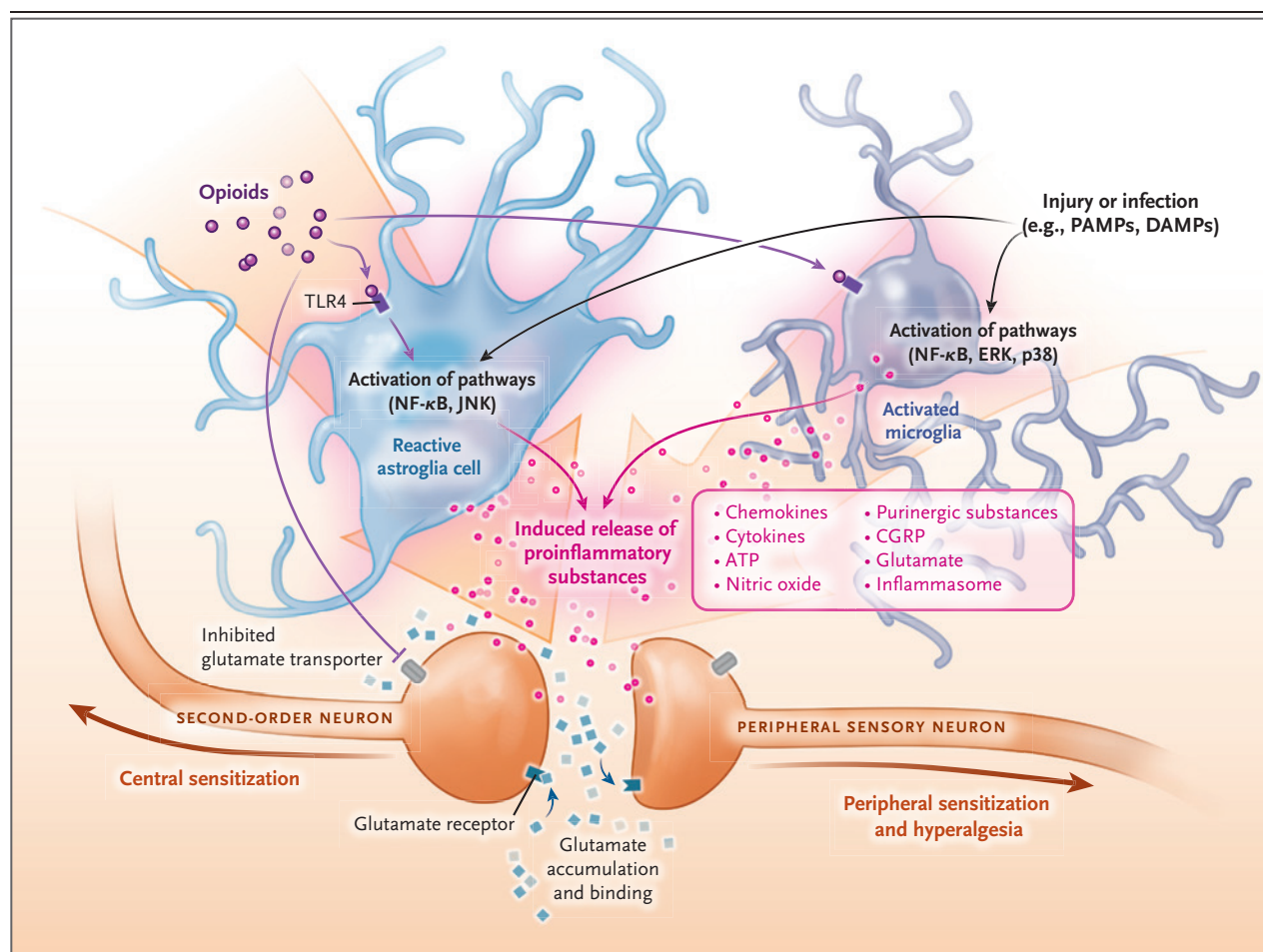
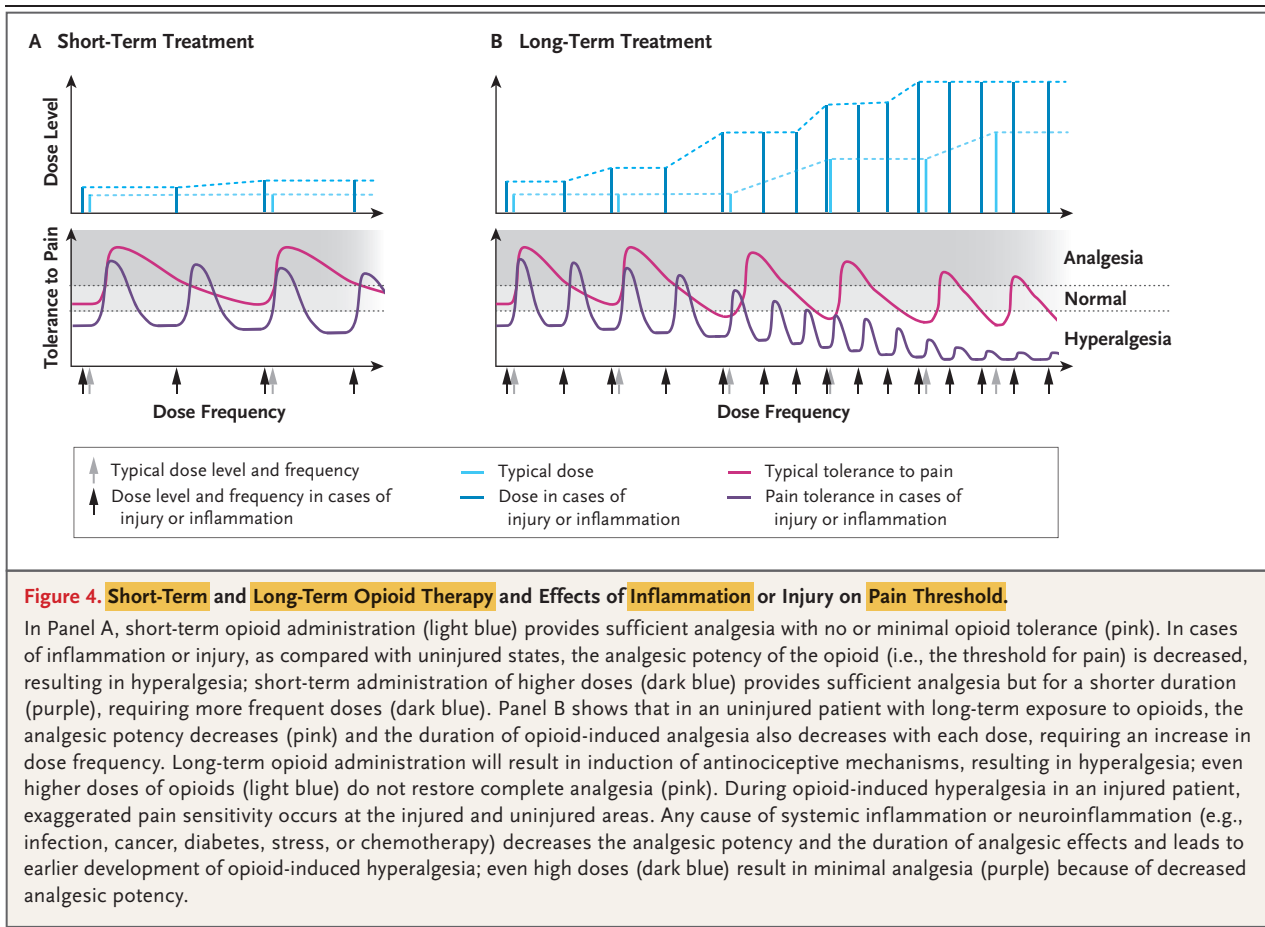


Figure 3. Cross Talk between Neuronal and Non-Neuronal Cells during Injury and Inflammation.

Non-neuronal cells (e.g., astroglia and microglia) can modify pain perception through the production and release of pro-nociceptive mediators. Opioids, injury, cancer, chemotherapy, stress, and other causes of sterile or microbial inflammation can induce the release of damage-associated molecular pathogens (DAMPs) and pathogen-associated molecular patterns (PAMPs). DAMPs and PAMPs cause inflammasome release, which leads to the transition of microglia to an active state and astroglia to a reactive state. The “switched on” glia release inflammatory substances through activation of toll-like receptors (TLRs) and their downstream signaling proteins (Jun N-terminal kinase [JNK], nuclear factor κ B [NF- κ B], extracellular signal-regulated kinase [ERK], and p38 mitogen-activated protein kinase [p38]). Peripheral macrophages infiltrate the central nervous system because of selective breakdown of the blood–brain barrier, and they contribute to the inflammatory responses. The released proinflammatory substances (inflammasomes, ATP, and calcitonin gene-related peptide [CGRP]) sensitize the pre- and postsynaptic central neurons, leading to a vicious cycle characterized by the need for more opioids and more sensitization and more glia inflammation. The end result is a marked exaggeration of nociception, severe opioid tolerance, peripheral and central sensitization, and opioid-induced hyperalgesia.

factors that contribute to central sensitization include age, sex, and concomitant inflammatory conditions (e.g., those caused by cancer and chemotherapy). Notably, greater opioid tolerance seems to develop in pediatric patients^{7,8}; this may be related to less inhibition in the dorsal horn and more facilitation by the rostroventral medulla than in adults.⁵⁷ Thus, there are multiple factors (e.g., inflammation, infection, stress,

and use of opioids) that can lead to activation of the glia in patients in the ICU and can exaggerate pain behaviors, tolerance, and opioid-induced hyperalgesia, creating a vicious cycle of dose escalation and worsening pain (Figs. 3 and 4).^{50,51} Thus, tolerance appears to reflect a desensitization of receptor-mediated antinociceptive pathways, whereas opioid-induced hyperalgesia involves induction of pro-nociceptive glial–neuronal



pathways. Clinical observations confirm that hyperalgesia in persons with critical illnesses can be more profound than hyperalgesia in the general population.^{6,7} Further understanding of this phenomenon should help explain why simple and routine procedures can cause pain in patients in the ICU and will allow for more empathic and better care of patients in the ICU.

STRATEGIES TO MITIGATE OPIOID TOLERANCE AND OPIOID-INDUCED HYPERALGESIA

Strategies for mitigating opioid tolerance and opioid-induced hyperalgesia include reducing the dose of analgesics and the duration of treatment by interrupting infusions of sedative or analgesic agents daily or modulating infusions on the basis of analgesic assessment and sedation scores, by using multimodal analgesic agents (nerve blocks and nonopioid analgesics), and by rotating analgesic agents sequentially (Table 1, and Tables S2

and S3 in the Supplementary Appendix). Patients who have not previously received opioids usually have a good response to opioid analgesics, whereas those with prolonged exposure (illicit or prescribed) may have opioid tolerance on admission to the ICU, confounding therapy.^{44,58} Four case scenarios are discussed in Appendix S1 and Table S4 in the Supplementary Appendix.

DAILY INTERRUPTION OF SEDATIVE INFUSIONS

Interrupted infusions of analgesics and sedatives, as compared with uninterrupted infusions, allow patients to be more awake (without iatrogenic coma), yield improved assessment and treatment of pain with fewer days on a ventilator, lessen psychological distress, and do not increase the incidence of cardiovascular and other outcomes.⁵⁹⁻⁶² Conversion to intermittent bolus therapy or patient-controlled analgesia should be instituted as early as possible. Prolonged coadministration of a benzodiazepine and morphine was shown to exacerbate opioid toler-

ance⁶³; therefore, reducing benzodiazepine use may mitigate tolerance and delirium. Alternative nonanalgesic drugs could be used for sedation and potentiation of opioid effects.

NEURAXIAL AND NON-NEURAXIAL ANALGESIA

Neuraxial (thoracic or lumbar epidural) analgesic techniques provide effective analgesia while reducing opioid exposure and tolerance, pulmonary morbidity, duration of mechanical ventilation, and the incidence of postoperative ileus. They also render patients more awake and able to adhere to physical therapy regimens.^{64,65} Indications for epidurals include thoracic or major abdominal surgery, chest wall trauma, or pulmonary contusion. Despite possible contraindications in critically ill patients (e.g., administration of anticoagulant therapy), epidurals can be placed safely before — and continued during — anticoagulant administration. Other regional or non-neuraxial analgesic techniques with catheters are as effective as epidural administration of analgesics in selected patients. Non-neural blocks include paravertebral block for rib fractures or after thoracotomy, as well as transversus abdominis block for surgery of the lower abdomen.⁶⁵ Ultrasound-guided nerve blocks have been safely performed even in patients in the ICU who have had clinically significant coagulopathy.⁶⁶

OPIOID ROTATION

Opioid rotation (i.e., administration of a different opioid to control pain) generally mitigates tolerance. A single gene encodes the mu-opioid receptor, but during gene expression some exons are excluded from the final messenger RNA. Consequently, several receptor subtypes can co-exist (e.g., μ_1 and μ_2) owing to alternative exon splicing. One receptor subtype may undergo desensitization to one opioid, leaving other subtypes available for a new opioid; hence, the rationale for opioid rotation for the restoration of analgesic efficacy and decreased doses.⁶⁷ During opioid rotation, the dose of the new opioid is derived empirically because opioid conversion tables (used for calculations of opioid equivalence) may be inapplicable in a patient in whom tolerance has developed, particularly during the coadministration of nonopioid adjuvants (e.g., dexmedetomidine or ketamine).⁶⁷ Another explanation for the efficacy of drug rotation during

Table 1. Strategies for Mitigating Opioid Tolerance or Opioid-Induced Hyperalgesia.*

Appropriate use of opioids

Use of valid assessment scales of pain before and during administration of the analgesic drug

Use of intermittent opioid therapy (oral or intravenous) rather than continuous infusions, when possible

Opioid rotation

Use of remifentanyl for short-term analgesia (because of potent induction of opioid-induced hyperalgesia), except when rapid offset of effect is required, as in evaluation of head injury

Minimal use of benzodiazepines (because of delirium and potential opioid-induced hyperalgesia associated with long-term use)

Avoidance of excessive dose escalation; supplementation of opioid with nonopioid analgesics

Addition of methadone to attenuate or delay opioid tolerance

Coadministration of nonopioid analgesics as rescue therapy during procedures or to potentiate the effects of opioids

N-methyl-D-aspartate receptor antagonists (ketamine)

α_2 -Adrenergic receptor agonists (clonidine or dexmedetomidine)

Gabapentinoids (gabapentin or pregabalin)

Continuous administration of nerve blocks by means of a catheter

Neuraxial: thoracic or lumbar epidural blocks for thoracic, abdominal, or bilateral leg analgesia

Regional: brachial plexus block for arm analgesia; femoral or obturator block or both, with or without sciatic nerve block for lower-limb analgesia

Local: paravertebral block for rib fractures or chest-tube-associated pain; transversus abdominis block for lower abdominal surgery

Prevention or reversal of opioid-induced hyperalgesia and opioid-withdrawal symptoms

Tapering of opioid dose when pain score goal is achieved (10–20% dose reduction every 1–4 days)

Use of valid withdrawal assessment scales

Use of adjuncts to opioids (ketamine, dexmedetomidine, or gabapentinoids [gabapentin or pregabalin])

Use of methadone

Reduction of inflammation

Scheduled acetaminophen therapy

Short-term use of ketorolac†

* The nonopioid strategies that are listed are usually used in combination with opioids; dosing regimens and routes of drug administration are provided in Tables S2 and S3 in the Supplementary Appendix.

† Other nonsteroidal antiinflammatory drugs (e.g., ibuprofen) have limited use in the intensive care unit because of cardiovascular, nephrotoxic, and gastrointestinal side effects.

morphine and hydromorphone therapy involves the properties of the morphine-3-glucuronide metabolite, which counteract the analgesic effects of morphine and morphine-6-glucuronide.⁴⁰ Replacing morphine and hydromorphone with an-

other opioid that has inactive metabolites (e.g., fentanyl or methadone) will decrease morphine-3-glucuronide levels, allowing more effective analgesia by the second drug.

MULTIMODAL ANALGESIA

In multimodal pain management, multiple non-opioid drugs can be used in combination with or in place of opioids to target various nociceptive pathways in the peripheral or central nervous system.^{68,69} This approach produces additive and even synergistic effects of the analgesic agents and reduces the adverse effects of opioids. Only the common nonopioid analgesics available for pain control are discussed here (Table 1, and Table S3 in the Supplementary Appendix).⁶⁹

Ketamine induces analgesia largely by blocking the NMDA receptors, but it also has modulatory roles by means of cholinergic, aminergic, and opioid systems.⁷⁰ Since NMDA-receptor hyperactivity underlies a key mechanism of opioid tolerance and opioid-induced hyperalgesia, ketamine effectively ameliorates these conditions.⁷⁰ Additional advantages include opioid sparing, minimal respiratory depression without psychotomimetic effects (at lower levels),^{69,70} and the antidepressant effects of ketamine metabolites.⁷¹

Clonidine, an α_2 -adrenergic agonist, has modest analgesic, sedative, antihypertensive, and opioid-sparing effects and has also been used to mitigate opioid-induced hyperalgesia and withdrawal symptoms during opioid weaning.⁷² Dexmedetomidine is more potent and has a shorter half-life than clonidine, and doses can easily be adjusted according to the response.⁶⁹

The gabapentinoids gabapentin and pregabalin are commonly used adjuncts for multimodal analgesia. The involvement of multiple sites of action is probably responsible for their superior pain relief.⁶⁹ Common dose-related side effects include sedation, dizziness, and confusion, and their opioid potentiation can cause respiratory arrest.⁷³

OTHER NONOPIOID DRUGS

Acetaminophen is a weak analgesic but is commonly incorporated in multimodal analgesic strategies for opioid sparing because it blocks the central production of prostaglandins.⁷⁴ Par-enteral acetaminophen causes hypotension. Doses are reduced or not administered during hepatic dysfunction, malnutrition, or dehydration. The

traditional nonsteroidal antiinflammatory drugs (e.g., ibuprofen), which are nonselective cyclooxygenase inhibitors, are not conventionally used in the ICU because of their side effects. Ketorolac is effective as an opioid-sparing agent, and short-term ketorolac use does not increase postoperative bleeding.⁷⁵

FUTURE DIRECTIONS FOR PREVENTION AND TREATMENT OF OPIOID TOLERANCE

The basic and translational development of forthcoming opioid-receptor-targeted and nonopioid-receptor-targeted pain therapies unrelated to patients in the ICU has been recently reviewed.⁷⁶ Several approaches presented in that review show promise for mitigating tolerance and hyperalgesia in the ICU. We will highlight three approaches.

MODULATION OF IMMUNE RESPONSES

Studies have suggested that inflammasome and toll-like receptor activation mediated by DAMPs critically affects the glial response to both tissue injury and opioids.^{3,28,48} Toll-like receptor activation can be regulated by racemic naloxone or a stereoselective naloxone isomer, (+)-naloxone.²⁸ For example, dextromorphine exerts a stereoselective action over levomorphine in the activation of glia; opioid-receptor agonists, including morphine, activate toll-like receptors but are antagonized by (+)-naloxone.²⁸ Thus, (–)-naloxone and (+)-naloxone could be used to differentiate between the role of an opioid in analgesia and activation of toll-like receptors, making it possible to lessen the inflammatory responses to tissue injury and opioid exposure without antagonizing opioid-induced analgesia. Specific inflammasome inhibitors may also be used to modulate glia-mediated exaggerated nociception and opioid tolerance, without broadly inhibiting immunity.⁷⁷

The neuronal α_7 nicotinic acetylcholine receptor agonists have been shown to attenuate microglia activation^{52,78} and to have protective effects on inflammation induced by critical illnesses.^{79,80} Moreover, α_7 nicotinic acetylcholine receptor activation attenuates inflammatory and neuropathic pain and opioid-induced hyperalgesia in rodent models.^{78,79,81} Therefore, α_7 nicotinic acetylcholine receptor agonists could be useful in the reduction of both critical illness-related inflammation and pain.

CANNABINOIDS

The role of endocannabinoids in anxiety, stress, and pain is well documented,^{82,83} but the usefulness of exogenous cannabinoids in stress-induced hyperalgesia and opioid-sparing in patients in the ICU is unknown. In addition, cannabinoids regulate inflammatory responses in preclinical models.⁸² The analgesic efficacy of cannabinoids, their interactions (additive or synergistic) with opioids, and their abuse potential when combined with opioids for pain control in patients in the ICU are topics for future study.

BUPRENORPHINE WITH OR WITHOUT NALOXONE AND METHADONE

Buprenorphine, an opioid analgesic agent, is currently used (with or without naloxone) as replacement therapy in persons with substance-use disorders and for the treatment of chronic pain.⁸⁴ Although it is a weak analgesic for patients who do not have opioid dependency, it has shown promise in patients with opioid dependency because it reverses opioid-induced hyperalgesia.⁸⁴ Opioid-induced hyperalgesia is partially related to increased interaction of dynorphins with the kappa-opioid receptor; buprenorphine blocks the binding of dynorphins to the kappa-opioid receptor and attenuates opioid-induced hyperalgesia.^{85,86} Furthermore, buprenorphine, although a partial opioid agonist, has high affinity for opioid receptors and thereby blocks other opioids from activating the same receptors. Although few studies have directly compared the analgesic effects of buprenorphine and methadone, buprenorphine may be superior in cases of renal failure because of extrarenal excretion.⁸⁷ Thus, pragmatic clinical protocols are needed to guide the use of buprenorphine and naloxone in patients in the ICU who are progressing toward opioid tolerance and for those already receiving buprenorphine or naloxone therapy before admission.

Methadone, another opioid analgesic, mitigates opioid-induced hyperalgesia by inhibiting NMDA receptors and serotonin-reuptake activity and blocking adenylate cyclase overactivity, which is partly responsible for the withdrawal symptoms.^{36,88} The major downside of methadone is its variable metabolism, intra- and interindividually. During opioid rotation or opioid weaning, methadone doses must be adjusted to maintain sufficient alleviation of symptoms while avoiding side effects.⁸⁸⁻⁹⁰ Oversedation and prolongation of the

cardiac QT interval can occur with cytochrome P-450 inhibitors or low magnesium levels. Methadone is used cautiously in the ICU because of its unpredictable half-life and cardiac toxicity.^{91,92} Methadone is a racemic mixture of two stereoisomers (*l*-methadone and *d*-methadone), with *l*-methadone being 8 to 50 times as potent as *d*-methadone³⁶; therefore, in patients in the ICU who do not have a response to other opioids, the usefulness of *l*-methadone or methadone, which produces analgesia through multiple sites of action that differ in potency, is not clear.^{36,88,90}

OTHER DRUGS AND CONSIDERATIONS

Lidocaine, β -adrenoceptor antagonists, magnesium, tricyclic antidepressants, and other drugs have been used as analgesic adjuncts to decrease opioid doses. Their long-term safety and efficacy in the ICU have not been well established in randomized, controlled trials. Selective serotonin-reuptake inhibitors and serotonin-norepinephrine reuptake inhibitors have antinociceptive effects, but mortality is higher among patients who use them before ICU admission than among patients who do not.⁹³ Antipsychotic agents are currently used in the ICU as adjuncts to opioids, but their use has not been studied systematically. Multiple drugs are often administered simultaneously, and in cases of organ dysfunction, the altered drug disposition increases the risk of additive, synergistic, or antagonistic drug interactions, underscoring the importance of reviewing all medications.⁹⁴ Hepatic disease mildly affects the dispositions of morphine and fentanyl, and their elimination depends on hepatic blood flow; therefore, the drugs are useful in hepatic dysfunction but not in low-flow states.⁹⁵ Remifentanyl, although rapidly cleared even in cases of organ dysfunction, quickly induces tolerance and opioid-induced hyperalgesia.⁹¹

CONCLUSIONS

There are many indications for opioid use in persons with critical illnesses. However, long-term opioid use has detrimental effects, including analgesic tolerance, which drives dose escalation and leads to opioid-induced hyperalgesia. Pain management (analgesia) in patients in the ICU, who are more vulnerable than the general population to both exaggerated tolerance and the deleterious effects of opioids, has been a challenge

for decades, and methods to mitigate the risks associated with opioid administration are unresolved. The etiologic factors (i.e., cell types and receptors, sex, extremes of age, and the underlying inflammation- and opioid-induced immune responses) that contribute to these maladaptive responses have not been well characterized and pose a barrier to improving analgesic therapy in cases of critical illness. A more nuanced understanding of the way critical illness and inflammation affect the body's response to opioids could lead to tremendous reduction in morbidity

among critically ill patients. Furthermore, the translational application of pain therapies targeted to opioid receptors and those targeted to nonopioid receptors is currently being studied in the general population and provides a road map for strategies to mitigate opioid tolerance in persons with critical illnesses.

Disclosure forms provided by the authors are available with the full text of this article at NEJM.org.

We thank Ethan Sanford, M.D., Derek Hursey, Pharm.D., Melissa Gorman, M.S.N., C.C.R.N.-K., and M. Tréjeeve Martyn, M.D., for their comments and critiques on an earlier version of the manuscript.

REFERENCES

- Cullen DJ, Sweitzer BJ, Bates DW, Burdick E, Edmondson A, Leape LL. Preventable adverse drug events in hospitalized patients: a comparative study of intensive care and general care units. *Crit Care Med* 1997;25:1289-97.
- Barr J, Fraser GL, Puntillo K, et al. Clinical practice guidelines for the management of pain, agitation, and delirium in adult patients in the intensive care unit. *Crit Care Med* 2013;41:263-306.
- Roeckel LA, Le Coz GM, Gavériaux-Ruff C, Simonin F. Opioid-induced hyperalgesia: cellular and molecular mechanisms. *Neuroscience* 2016;338:160-82.
- Chu LF, Angst MS, Clark D. Opioid-induced hyperalgesia in humans: molecular mechanisms and clinical considerations. *Clin J Pain* 2008;24:479-96.
- Puntillo KA, Naidu R. Chronic pain disorders after critical illness and ICU-acquired opioid dependence: two clinical conundra. *Curr Opin Crit Care* 2016;22:506-12.
- Bittner EA, Shank E, Woodson L, Martyn JA. Acute and perioperative care of the burn-injured patient. *Anesthesiology* 2015;122:448-64.
- Anand KJ, Willson DF, Berger J, et al. Tolerance and withdrawal from prolonged opioid use in critically ill children. *Pediatrics* 2010;125(5):e1208-e1225.
- Wang Y, Mitchell J, Moriyama K, et al. Age-dependent morphine tolerance development in the rat. *Anesth Analg* 2005;100:1733-9.
- Mendell JR, Sahenk Z. Painful sensory neuropathy. *N Engl J Med* 2003;348:1243-55.
- Stein C. Opioid receptors. *Annu Rev Med* 2016;67:433-51.
- Meisner JG, Marsh AD, Marsh DR. Loss of GABAergic interneurons in laminae I-III of the spinal cord dorsal horn contributes to reduced GABAergic tone and neuropathic pain after spinal cord injury. *J Neurotrauma* 2010;27:729-37.
- Chanques G, Sebbane M, Barbotte E, Viel E, Eledjam JJ, Jaber S. A prospective study of pain at rest: incidence and characteristics of an unrecognized symptom in surgical and trauma versus medical intensive care unit patients. *Anesthesiology* 2007;107:858-60.
- Puntillo KA, Max A, Timsit JF, et al. Determinants of procedural pain intensity in the intensive care unit: the Euro-pain study. *Am J Respir Crit Care Med* 2014;189:39-47.
- Chanques G, Pohlman A, Kress JP, et al. Psychometric comparison of three behavioural scales for the assessment of pain in critically ill patients unable to self-report. *Crit Care* 2014;18:R160.
- Faust AC, Rajan P, Sheperd LA, Alvarez CA, McCorstin P, Doebele RL. Impact of an analgesia-based sedation protocol on mechanically ventilated patients in a medical intensive care unit. *Anesth Analg* 2016;123:903-9.
- Devabhakthuni S, Armahizer MJ, Dasta JF, Kane-Gill SL. Analgesation: a paradigm shift in intensive care unit sedation practice. *Ann Pharmacother* 2012;46:530-40.
- Chapman CR, Tuckett RP, Song CW. Pain and stress in a systems perspective: reciprocal neural, endocrine, and immune interactions. *J Pain* 2008;9:122-45.
- Tennant F. The physiologic effects of pain on the endocrine system. *Pain Ther* 2013;2:75-86.
- Finnerty CC, Mabvuure NT, Ali A, Kozar RA, Herndon DN. The surgically induced stress response. *J Parenter Enteral Nutr* 2013;37:Suppl:21S-29S.
- Wohleb ES, McKim DB, Sheridan JF, Godbout JP. Monocyte trafficking to the brain with stress and inflammation: a novel axis of immune-to-brain communication that influences mood and behavior. *Front Neurosci* 2015;8:447.
- Fonken LK, Weber MD, Daut RA, et al. Stress-induced neuroinflammatory priming is time of day dependent. *Psychoneuroendocrinology* 2016;66:82-90.
- Anderson BJ, Mikkelsen ME. Stressing the brain: the immune system, hypothalamic-pituitary-adrenal axis, and psychiatric symptoms in acute respiratory distress syndrome survivors. *Ann Am Thorac Soc* 2017;14:839-41.
- Finan PH, Goodin BR, Smith MT. The association of sleep and pain: an update and a path forward. *J Pain* 2013;14:1539-52.
- Novaes MA, Knobel E, Bork AM, Pavão OF, Nogueira-Martins LA, Ferraz MB. Stressors in ICU: perception of the patient, relatives and health care team. *Intensive Care Med* 1999;25:1421-6.
- Baumbach P, Götz T, Günther A, Weiss T, Meissner W. Prevalence and characteristics of chronic intensive care-related pain: the role of severe sepsis and septic shock. *Crit Care Med* 2016;44:1129-37.
- Jiang X, Orton M, Feng R, et al. Chronic opioid usage in surgical patients in a large academic center. *Ann Surg* 2017;265:722-7.
- Wibbenmeyer L, Sevier A, Liao J, et al. The impact of opioid administration on resuscitation volumes in thermally injured patients. *J Burn Care Res* 2010;31:48-56.
- Hutchinson MR, Shavit Y, Grace PM, Rice KC, Maier SF, Watkins LR. Exploring the neuroimmunopharmacology of opioids: an integrative review of mechanisms of central immune signaling and their implications for opioid analgesia. *Pharmacol Rev* 2011;63:772-810.
- Gudin JA, Laitman A, Nalamachu S. Opioid related endocrinopathy. *Pain Med* 2015;16:Suppl 1:S9-S15.
- Carmona-Bayonas A, Jiménez-Fonseca P, Castañón E, et al. Chronic opioid therapy in long-term cancer survivors. *Clin Transl Oncol* 2017;19:236-50.
- Juneja R. Opioids and cancer recurrence. *Curr Opin Support Palliat Care* 2014;8:91-101.
- Pandharipande P, Cotton BA, Shintani A, et al. Prevalence and risk factors for development of delirium in surgical and trauma intensive care unit patients. *J Trauma* 2008;65:34-41.
- Pisani MA, Murphy TE, Araujo KL, Van Ness PH. Factors associated with persistent delirium after intensive care unit

- admission in an older medical patient population. *J Crit Care* 2010;25(3):540.e1-7.
34. Strøm T, Martinussen T, Toft P. A protocol of no sedation for critically ill patients receiving mechanical ventilation: a randomised trial. *Lancet* 2010;375:475-80.
 35. Schaller SJ, Alam SM, Mao J, et al. Pharmacokinetics cannot explain the increased effective dose requirement for morphine and midazolam in rats during their extended administration alone or in combination. *J Pharm Pharmacol* 2017; 69:82-8.
 36. Kharasch ED. Current concepts in methadone metabolism and transport. *Clin Pharmacol Drug Dev* 2017;6:125-34.
 37. Han T, Harmatz JS, Greenblatt DJ, Martyn JA. Fentanyl clearance and volume of distribution are increased in patients with major burns. *J Clin Pharmacol* 2007; 47:674-80.
 38. Bista SR, Haywood A, Hardy J, Lobb M, Tapuni A, Norris R. Protein binding of fentanyl and its metabolite nor-fentanyl in human plasma, albumin and α -1 acid glycoprotein. *Xenobiotica* 2015;45:207-12.
 39. Bauer B, Hartz AM, Miller DS. Tumor necrosis factor α and endothelin-1 increase P-glycoprotein expression and transport activity at the blood-brain barrier. *Mol Pharmacol* 2007;71:667-75.
 40. Smith MT. Neuroexcitatory effects of morphine and hydromorphone: evidence implicating the 3-glucuronide metabolites. *Clin Exp Pharmacol Physiol* 2000;27: 524-8.
 41. Roeckel LA, Utard V, Reiss D, et al. Morphine-induced hyperalgesia involves mu opioid receptors and the metabolite morphine-3-glucuronide. *Sci Rep* 2017;7: 10406.
 42. Porreca F, Cowan A, Raffa RB, Tallarida RJ. Estimation in vivo of the receptor constants of morphine in naive and morphine-tolerant rats. *Life Sci* 1982;31: 2355-8.
 43. Dumas EO, Pollack GM. Opioid tolerance development: a pharmacokinetic/pharmacodynamic perspective. *AAPS J* 2008;10:537-51.
 44. Compton P, Charuvastra VC, Ling W. Pain intolerance in opioid-maintained former opiate addicts: effect of long-acting maintenance agent. *Drug Alcohol Depend* 2001;63:139-46.
 45. Cahill CM, Walwyn W, Taylor AMW, Pradhan AAA, Evans CJ. Allostatic mechanisms of opioid tolerance beyond desensitization and downregulation. *Trends Pharmacol Sci* 2016;37:963-76.
 46. Waxman AR, Arout C, Caldwell M, Dahan A, Kest B. Acute and chronic fentanyl administration causes hyperalgesia independently of opioid receptor activity in mice. *Neurosci Lett* 2009;462:68-72.
 47. Costantino CM, Gomes I, Stockton SD, Lim MP, Devi LA. Opioid receptor heteromers in analgesia. *Expert Rev Mol Med* 2012;14:e9.
 48. Ji RR, Chameissian A, Zhang YQ. Pain regulation by non-neuronal cells and inflammation. *Science* 2016;354:572-7.
 49. Donello JE, Guan Y, Tian M, et al. A peripheral adrenoceptor-mediated sympathetic mechanism can transform stress-induced analgesia into hyperalgesia. *Anesthesiology* 2011;114:1403-16.
 50. de Goeij M, van Eijk LT, Vanelderen P, et al. Systemic inflammation decreases pain threshold in humans in vivo. *PLoS One* 2013;8(12):e84159.
 51. Nyland JE, McLean SA, Averitt DL. Prior stress exposure increases pain behaviors in a rat model of full thickness thermal injury. *Burns* 2015;41:1796-804.
 52. Chavan SS, Pavlov VA, Tracey KJ. Mechanisms and therapeutic relevance of neuro-immune communication. *Immunity* 2017;46:927-42.
 53. Frank MG, Watkins LR, Maier SF. Stress-induced glucocorticoids as a neuroendocrine alarm signal of danger. *Brain Behav Immun* 2013;33:1-6.
 54. Chiu IM, Heesters BA, Ghasemlou N, et al. Bacteria activate sensory neurons that modulate pain and inflammation. *Nature* 2013;501:52-7.
 55. Fusco M, Skaper SD, Coaccioli S, Varrassi G, Paladini A. Degenerative joint diseases and neuroinflammation. *Pain Pract* 2017;17:522-32.
 56. Gatson JW, Liu MM, Rivera-Chavez FA, Minei JP, Wolf SE. Serum levels of neurofilament-H are elevated in patients suffering from severe burns. *J Burn Care Res* 2015;36:545-50.
 57. Verriotis M, Chang P, Fitzgerald M, Fabrizi L. The development of the nociceptive brain. *Neuroscience* 2016;338:207-19.
 58. Huxtable CA, Roberts LJ, Somogyi AA, MacIntyre PE. Acute pain management in opioid-tolerant patients: a growing challenge. *Anaesth Intensive Care* 2011;39:804-23.
 59. Kress JP, Pohlman AS, O'Connor ME, Hall JB. Daily interruption of sedative infusions in critically ill patients undergoing mechanical ventilation. *N Engl J Med* 2000;342:1471-7.
 60. Kress JP, Gehlbach B, Lacy M, Pliskin N, Pohlman AS, Hall JB. The long-term psychological effects of daily sedative interruption on critically ill patients. *Am J Respir Crit Care Med* 2003;168:1457-61.
 61. Nassar APJ, Park M. Sedation protocols versus daily sedation interruption: a systematic review and meta-analysis. *Rev Bras Ter Intensiva* 2016;28:444-51.
 62. Shehabi Y. The golden hours of ICU sedation: the clock is ticking. *Crit Care Med* 2018;46:490-1.
 63. Song L, Wang S, Zuo Y, Chen L, Martyn JA, Mao J. Midazolam exacerbates morphine tolerance and morphine-induced hyperactive behaviors in young rats with burn injury. *Brain Res* 2014;1564:52-61.
 64. Capdevila M, Ramin S, Capdevila X. Regional anesthesia and analgesia after surgery in ICU. *Curr Opin Crit Care* 2017; 23:430-9.
 65. De Pinto M, Dagal A, O'Donnell B, Stogicza A, Chiu S, Edwards WT. Regional anesthesia for management of acute pain in the intensive care unit. *Int J Crit Illn Inj Sci* 2015;5:138-43.
 66. Wiebalck A, Grau T. Ultrasound imaging techniques for regional blocks in intensive care patients. *Crit Care Med* 2007;35:Suppl:S268-S274.
 67. Webster LR, Fine PG. Review and critique of opioid rotation practices and associated risks of toxicity. *Pain Med* 2012; 13:562-70.
 68. Kohler M, Chiu F, Gelber KM, Webb CA, Weyker PD. Pain management in critically ill patients: a review of multimodal treatment options. *Pain Manag* 2016;6: 591-602.
 69. Kumar K, Kirksey MA, Duong S, Wu CL. A review of opioid-sparing modalities in perioperative pain management: methods to decrease opioid use postoperatively. *Anesth Analg* 2017;125:1749-60.
 70. Mion G, Villevieille T. Ketamine pharmacology: an update (pharmacodynamics and molecular aspects, recent findings). *CNS Neurosci Ther* 2013;19:370-80.
 71. Costi S, Van Dam NT, Murrrough JW. Current status of ketamine and related therapies for mood and anxiety disorders. *Curr Behav Neurosci Rep* 2015;2:216-25.
 72. Wang JG, Belley-Coté E, Burry L, et al. Clonidine for sedation in the critically ill: a systematic review and meta-analysis. *Crit Care* 2017;21:75.
 73. Quintero GC. Review about gabapentin misuse, interactions, contraindications and side effects. *J Exp Pharmacol* 2017;9: 13-21.
 74. McDaid C, Maund E, Rice S, Wright K, Jenkins B, Woolacott N. Paracetamol and selective and non-selective non-steroidal anti-inflammatory drugs (NSAIDs) for the reduction of morphine-related side effects after major surgery: a systematic review. *Health Technol Assess* 2010;14: 1-153, iii-iv.
 75. Wick EC, Grant MC, Wu CL. Postoperative multimodal analgesia pain management with nonopioid analgesics and techniques: a review. *JAMA Surg* 2017; 152:691-7.
 76. Knezevic NN, Yekkirala A, Yaksh TL. Basic/translational development of forthcoming opioid- and nonopioid-targeted pain therapeutics. *Anesth Analg* 2017; 125:1714-32.
 77. Boriushkin E, Wang JJ, Li J, Bhatta M, Zhang SX. p58(IPK) Suppresses NLRP3 inflammasome activation and IL-1 β production via inhibition of PKR in macrophages. *Sci Rep* 2016;6:25013.
 78. Bagdas D, Gurun MS, Flood P, Papke RL, Damaj MI. New insights on neuronal nicotinic acetylcholine receptors as targets for pain and inflammation: a focus on α 7

- nAChRs. *Curr Neuropsychopharmacol* 2018;16:415-25.
79. Ren C, Tong YL, Li JC, Lu ZQ, Yao YM. The protective effect of alpha 7 nicotinic acetylcholine receptor activation on critical illness and its mechanism. *Int J Biol Sci* 2017;13:46-56.
 80. Chavan SS, Tracey KJ. Essential neuroscience in immunology. *J Immunol* 2017;198:3389-97.
 81. Abbas M, Rahman S. Effects of alpha-7 nicotinic acetylcholine receptor positive allosteric modulator on lipopolysaccharide-induced neuroinflammatory pain in mice. *Eur J Pharmacol* 2016;783:85-91.
 82. Ueda M, Iwasaki H, Wang S, et al. Cannabinoid receptor type 1 antagonist, AM251, attenuates mechanical allodynia and thermal hyperalgesia after burn injury. *Anesthesiology* 2014;121:1311-9.
 83. Woodhams SG, Chapman V, Finn DP, Hohmann AG, Neugebauer V. The cannabinoid system and pain. *Neuropharmacology* 2017;124:105-20.
 84. Chen KY, Chen L, Mao J. Buprenorphine-naloxone therapy in pain management. *Anesthesiology* 2014;120:1262-74.
 85. Vanderah TW, Gardell LR, Burgess SE, et al. Dynorphin promotes abnormal pain and spinal opioid antinociceptive tolerance. *J Neurosci* 2000;20:7074-9.
 86. Horan P, Taylor J, Yamamura HI, Porreca F. Extremely long-lasting antagonistic actions of nor-binaltorphimine (nor-BNI) in the mouse tail-flick test. *J Pharmacol Exp Ther* 1992;260:1237-43.
 87. Davis MP. Twelve reasons for considering buprenorphine as a frontline analgesic in the management of pain. *J Support Oncol* 2012;10:209-19.
 88. Elefritz JL, Murphy CV, Papadimos TJ, Lyaker MR. Methadone analgesia in the critically ill. *J Crit Care* 2016;34:84-8.
 89. McCance-Katz EF, Sullivan LE, Nalini S. Drug interactions of clinical importance among the opioids, methadone and buprenorphine, and other frequently prescribed medications: a review. *Am J Addict* 2010;19:4-16.
 90. Moody DE. Metabolic and toxicological considerations of the opioid replacement therapy and analgesic drugs: methadone and buprenorphine. *Expert Opin Drug Metab Toxicol* 2013;9:675-97.
 91. Hayhurst CJ, Durieux ME. Differential opioid tolerance and opioid-induced hyperalgesia: a clinical reality. *Anesthesiology* 2016;124:483-8.
 92. Krantz MJ, Martin J, Stimmel B, Mehta D, Haigney MC. QTc interval screening in methadone treatment. *Ann Intern Med* 2009;150:387-95.
 93. Ghassemi M, Marshall J, Singh N, Stone DJ, Celi LA. Leveraging a critical care database: selective serotonin reuptake inhibitor use prior to ICU admission is associated with increased hospital mortality. *Chest* 2014;145:745-52.
 94. Feng XQ, Zhu LL, Zhou Q. Opioid analgesics-related pharmacokinetic drug interactions: from the perspectives of evidence based on randomized controlled trials and clinical risk management. *J Pain Res* 2017;10:1225-39.
 95. Choi L, Ferrell BA, Vasilevskis EE, et al. Population pharmacokinetics of fentanyl in the critically ill. *Crit Care Med* 2016;44:64-72.

Copyright © 2019 Massachusetts Medical Society.

IMAGES IN CLINICAL MEDICINE

The *Journal* welcomes consideration of new submissions for Images in Clinical Medicine. Instructions for authors and procedures for submissions can be found on the *Journal's* website at NEJM.org. At the discretion of the editor, images that are accepted for publication may appear in the print version of the *Journal*, the electronic version, or both.

Supplementary Appendix

This appendix has been provided by the authors to give readers additional information about their work.

Supplement to: Martyn JAJ, Mao J, Bittner EA. Opioid tolerance in critical illness. N Engl J Med 2019;380:365-78.
DOI: 10.1056/NEJMra1800222

OPIOID TOLERANCE IN CRITICAL ILLNESS

J.A. Jeevendra Martyn, M.D., F.R.C.A., F.C.C.M.

Jianren Mao, M.D., Ph.D., Edward A. Bittner, M.D., Ph.D., F.C.C.M.

Table of Contents

Table of Contents – Page 1

Appendix 1 Case-Scenarios—Page 2-5

Supplementary Table S1—Page 6

Supplementary Table S2—Page 7

Supplementary Table S3—Page 8

Supplementary Table S4—Page 9

Case-Scenarios, Potential Approaches and Rationale for the Pain Management

Case # 1: A 71-year-old alcoholic woman is admitted to the ICU via the emergency department because of hypoventilation and oxygen desaturation with multiple rib fractures following a fall. She has impaired breathing because of severe pain with each breath. The coughing, precipitated by the pulmonary toilet of care personnel, exaggerates the pain.

Challenges and Solutions: Her inability to breathe is due to pain caused by the multiple rib fractures. The goal is to relieve pain without further depressing the respiration with opioids. Possible options to pain management are paravertebral catheter or thoracic epidural catheter block together with acetaminophen and gabapentin as analgesic adjuncts.

Rationale: By this multimodal analgesic technique, the respiratory depressant effects of opioids are avoided. Bupivacaine or ropivacaine local anesthetic can be used for the nerve blocks.

Case # 2: A 16-year-old boy sustained a major body surface area burn injury in a house fire. He is intubated and being ventilated because of facial swelling and inhalation injury. He will need to undergo multiple operative procedures for excision and grafting of the burn injured areas as well as regular dressing changes. He has been receiving morphine and midazolam infusions since transport from another hospital, but the pain is not optimally controlled despite increasing doses. The current dosing of infusions consists of greater than 0.5mg/kg/hour of morphine and midazolam.

Challenges and Solutions: The challenges include control of the baseline pain and its exaggeration during dressing changes and in the post-operative period. The goal is to provide protocolized analgesia to meet the varying baseline and procedural pain needs. To achieve this, daily awakenings can be performed reducing infusion rates and allowing better assessment of pain and sedation needs. For the pain emanating from skin

donor sites taken from non-burned skin, regional (catheter-infused axillary, femoral or sciatic) nerve blocks as indicated could be performed together with intravenous ketorolac, if no contraindications exist. Ketamine bolus doses can be added during procedural dressing changes as well. In view of the potential for potentiation of opioid tolerance and production of delirium by midazolam, its infusion can be eliminated if possible and intravenous dexmedetomidine added as sedative. Morphine, currently administered can be exchanged to a different one (e.g., from morphine to fentanyl as a strategy of opioid rotation). Consideration can be given to adding methadone with or without ketamine if tolerance is persistent and continues to be escalating to discontinue opioid infusion. Converting to intermittent opioid bolus therapy or to patient controlled analgesia should occur as early as possible with discontinuation of the opioid infusion. Finally, oral analgesics could be administered, when possible, for baseline and procedural pain

Rationale: Interruption of analgesics and sedative infusions keeps patients more awake (without iatrogenic coma) and yields better assessment and treatment of pain. Elimination of benzodiazepines mitigates tolerance and delirium. Multimodal analgesia with the use of dexmedetomidine, ketamine and methadone provides effective analgesia while reducing opioid exposure. Ketamine and methadone cause opioid sparing by improving tolerance and opioid-hyperalgesia via their effects on multiple sites including antagonism of the N-methyl D-aspartate receptor. Dexmedetomidine (α -2 adrenoceptor agonist) is an alternative non-opioid drug for sedation and potentiation of opioid effects. Opioid rotation takes advantage of incomplete cross-tolerance to improve analgesia and reduce tolerance. Initiation of patient controlled analgesia (when more awake) entitles patient to have some degree of control over his pain.

Case # 3: A 56-year-old woman with a history of opioid abuse was admitted to the ICU with urosepsis and acute kidney injury due to obstructive renal stones. She continues to have severe pain despite receiving morphine P.R.N.

Challenges and solutions: The challenge in this situation is managing acute pain with preexisting opioid use disorder. Patient controlled analgesia with fentanyl or hydromorphone could be started and then ketamine infusion added if needed. Non-steroidal anti-inflammatory drugs should not be administered given the acute kidney injury. Opioids should be gradually tapered with passing of renal stones and mitigation of pain.

Rationale: The acute renal failure complicates the use of many medications including opioids. In view of the renal injury, morphine should be minimized or avoided in because the metabolite morphine-3-glucuronide can accumulate in renal disease and can counteract the analgesic effects. The patient controlled analgesia method employed allows the patient to have some degree of control of her pain. Although she has a history of abuse, the mode of patient controlled analgesia prevents excessive self-administration and abuse. Ketamine, with its effects on N-methyl D-aspartate receptors, improves tolerance and opioid-hyperalgesia which are likely to be present because of her history of opioid use disorder.

Case # 4: A 32-year-old man with chronic abdominal pain is admitted to the ICU after major abdominal surgery. Prior to admission the patient was taking scheduled oxycodone for the chronic abdominal pain.

Challenges and Solutions: Multiple problems are co-existent in this patient. He may have some tolerance to opioids because of chronic opioid use. In addition, there is acute pain due to major surgery superimposed on his chronic abdominal pain. Furthermore, absorption of enteral opioid medication will be erratic and unpredictable due to surgery with possible long-term opioid-induced gastric ileus.

An epidural catheter with infusion of local anesthetic can be initiated pre-operatively, maintained intra-operatively, and continued in the ICU. Ketamine and acetaminophen alone or in combination can be added as needed. Conversion of the scheduled oxycodone that he was taking pre-operatively to intravenous opioid equivalents should occur with scheduled administration. With time change it to oral oxycodone as pre-operatively.

Rationale: The aforementioned multimodal techniques should provide effective analgesia while reducing opioid exposure. The supplemental intravenous opioids will meet the patient's baseline opioid needs and prevent opioid withdrawal. Ketamine administration will ameliorate opioid tolerance and opioid-hyperalgesia. Scheduled acetaminophen will act as an analgesic adjunct.

Supplementary Table S1

Indications for Opioid Therapy
Management of moderate to severe pain (analgesia) *
Adjunct to sedation, anxiolysis and hypnosis **
Permit synchrony with mechanical ventilation to facilitate gas exchange and minimize lung injury@
Decrease vigorous coughing to prevent intra-cranial and intra-thoracic pressure rises \$
Facilitate coughing and deep breathing after major thoraco-abdominal surgery \$\$
Decrease stress responses and activation of hypothalamic-pituitary-adrenocortical responses #
Prevent the development of chronic pain and post-traumatic stress disorder @@
Control opioid withdrawal and facilitate opioid weaning ^

Footnotes for Table S1:

*The pain prevalence and intensity in medical and surgical ICUs is similar and rated as moderate to severe. The origin of pain can be multifactorial (i.e., disease itself, tracheal suctioning, turning, mobilization, splints, neuropathies and pressure ulcers).

**Anxiety modulates central processing of pain and exacerbates the severity of perceived pain. @By depressing respiratory efforts, opioids facilitate synchrony with the ventilator and effective mechanical ventilation.

\$Prevention of increase of intra-cranial and intra-thoracic pressures that accompanies coughing is important in some ICU patients.

\$\$By decreasing pain after major thoraco-abdominal surgery, opioids promote deep breathing, and coughing, which mitigate pulmonary complications (atelectasis and pneumonia). #Pain relief decreases hypothalamic-pituitary-adrenocortical stress responses and mitigates hyperdynamic/hypercatabolic state.

@@Adequate acute pain and anxiety control decreases development of post-traumatic disorder and chronic pain.

^Rapid withdrawal of opioids leads to opioid-withdrawal syndrome; its treatment can include opioid therapy.

Supplementary Table S2: Clinical Pharmacology of Opioid Analgesics

Opioids	Equianalgesic Dose (mg)		Onset (IV)	Elimination Half-Life	Intermittent Dosing	Initiating Infusion Rate	Comments
	IV	PO					
Fentanyl	0.1	NA	1-2 min	2-4 hrs	<50kg: 0.5-2µg/kg IV q0.5-1hr >=50kg: 25-100µg IV q0.5-1hr	<50kg: 0.5-2µg/kg/hr >=50kg: 25-200µg/hr	Minimal hypotension. Hepatic blood flow-dependent clearance. Accumulation with hepatic impairment.
Hydromorphone	1.5	7.5	5-15 min	2-3 hrs	<50kg: 0.015mg/kg IV q3-6hrs >=50kg: 0.2-1mg IV q2-3hrs	<50kg: 3-5µg/kg/hr >=50kg: 0.5-3mg/hr	Therapeutic option in patients tolerant to morphine/fentanyl. Accumulation with hepatic /renal impairment.
Morphine	10	30	5-10 min	3-4 hrs Longer in neonates infants	<50kg: 0.025-0.1mg/kg IV q1-2hrs >=50kg: 2-5mg IV q1-2hrs	<50kg: 0.03-0.1mg/kg/hr >=50kg: 2-10mg/hr	Anti-analgesic metabolite. Accumulation with hepatic/renal impairment. Histamine release.
Remifentanyl	NA	NA	1-3 min	3-10 mins		Loading dose 1.5µg/kg IV; Maintenance 0.5-15µg/kg/hr	No accumulation in hepatic/renal dysfunction. Potent inducer of opioid-tolerance and hyperalgesia.
Methadone	NA	NA	10-20 mins	15-60 hrs	<50kg: 0.1-0.2mg/kg/dose PO q4-8hrs; 0.1mg/kg/dose IV q4-8hrs >=50kg: 5-10mg PO q4-8hrs; 2.5-10mg IV q8-12hrs	NA	Slows the development of tolerance and dose escalation. Unpredictable metabolism. Slower analgesia onset. Cardiac arrhythmias.

Note: The lower end of each dose range is typically the starting dose. Even in opioid tolerant patients it is safer to start at lower doses and then modulate upwards based on response.

Supplementary Table S3. Clinical Pharmacology of Non-Opioid Analgesics

Nonopioids (Route)	Onset	Elimination Half-Life	Dosing	Side Effect
Ketamine (IV)	30-40 Sec	2-3 hr.	Loading dose 0.1-0.5mg/kg followed by 0.05-0.5mg/kg/hr.	Attenuates the development of acute tolerance to opioids. May cause hallucinations and other psychological disturbances. Antidepressant effects.
Dexmedetomidine (IV)	5-10 Min	1.8-3.1 hr.	1µg/kg over 10 Min; followed by 0.2-0.7µg/kg/hr.	Bradycardia, hypotension or hypertension with loading dose and infusion; loss of airway reflexes.
Acetaminophen (PO)	30-60 Min	2-4 hr.	<50kg: 10-15mg/kg /dose,q4-6; Max. dose 75mg/kg/day >=50kg: 1000mg q6h or 650mg q4h Max. dose 3-4g/day	May be contraindicated in patients with significant hepatic dysfunction.
Acetaminophen (IV)	5-10 Min	2 hr.	<50kg: 10-15mg/kg /dose,q4-6; Max. dose 75mg/kg/day >=50kg: 1000mg q6h or 650mg q4h Max. dose 3-4g/day	Hypotension with IV dose. May be contraindicated in patients with significant hepatic dysfunction.
Acetaminophen (PR)	Variable	2-4 hr.	<50kg: 10-15mg/kg /dose,q4-6; Max. dose 75mg/kg/day >=50kg: 1000mg q6h or 650mg q4h Max. dose 3-4g/day	May be contraindicated in patients with significant hepatic dysfunction.
Ketorolac (IM/IV)	10 Min	2.4-8.6 hr.	<50kg: 0.5-1.0 mg/kg, q8-12hr; >=50kg: 15-30mg q6h <i>Typically not > 30 mg/dose</i>	Long term use is discouraged because of renal, cardiovascular and gastro-intestinal side effects (limit to <5 days). Platelet inhibition can occur.
Ibuprofen (IV)	NA	2.2-2.4 hr.	>=17 y/o: 400-800mg q6h; Max. dose 3200mg/day	Side effects same as IV formulation.
Ibuprofen (PO)	30-45 Min	1.8-2.5 hr.	<50kg: 5-10mg/kg; q6-8/hr.; Max. dose 40mg/kg/day >=50kg: 400-800mg q6h; Max. dose 3200mg/day	
Gabapentin (PO)	NA	5-7 hr.	Pediatric: 10-15mg/kg/day divided into 3 doses q8h Adult: 300-1200mg q8; Max. dose 3600mg/day	Common Side Effects: sedation, confusion, dizziness, ataxia. Adjust dosing in renal failure pts. Abrupt discontinuation associated with drug withdrawal syndrome. Potentiates opioids leading to respiratory arrest.

Note: The lower dose is usually the starting dose. Although upper limit doses are given, for ketamine and dexmedetomidine, doses higher than the upper limit may be needed in tolerant patients.

Supplementary Table S4. Some case-scenarios and potential approaches

(Analgesic drugs and their doses are given in Tables 2 and 3)

Case	Analgesic Challenges	Possible Solutions	Rationale
71-year-old woman with severe pain from multiple rib fractures after fall, impairing pulmonary toilet and breathing.	Acute pain; facilitate breathing without respiratory depression	Place thoracic epidural catheter or paravertebral block. Add gabapentin and/or acetaminophen as adjuncts to analgesia.	Respiratory depressant effects of opioids are avoided by employing multimodal analgesia.
16-year-old boy with severe pain from major burn injury is undergoing multiple operative procedures. He is intubated endotracheally and receiving morphine and midazolam infusions when transferred from another hospital but pain is not optimally controlled despite increasing doses	Acute pain due to injury, multiple operative procedures and daily dressing changes; Developing tolerance to analgesic infusions	Protocolized analgesia with sedation and daily awakenings. Add nerve blocks if feasible; add IV of IM ketorolac if no contraindication. Add ketamine-infusion or bolus (for dressing change). Add dexmedetomidine infusion and eliminate midazolam if possible. Rotate to different opioid as needed. Convert to intermittent opioid bolus therapy or P.C.A. as early as possible.	Interrupting analgesic infusions keep patients more awake (without iatrogenic coma) and better pain assessment and treatment. Multimodal analgesia provides effective analgesia while reducing opioid dose. Ketamine spares opioid use, mitigates tolerance and opioid-hyperalgesia via NMDA receptor antagonism. Dexmedetomidine, a non-opioid for sedation, potentiates opioids. Opioid rotation improves analgesia and reduces tolerance. Benzodiazepine elimination mitigates tolerance and delirium. P.C.A. gives patients to have some degree of control over their pain.
54-year-old woman with history of opioid abuse admitted to the ICU with urosepsis due to obstructing renal stones. Has severe pain despite receiving morphine p.r.n. Develops acute kidney injury	Acute pain with pre-existing opioid use disorder with uncertain doses and drugs; acute renal dysfunction	Change to fentanyl P.C.A. Avoid morphine or hydromorphone. Add ketamine infusion if needed. Add I.V. acetaminophen to potentiate analgesia. No NSAIDs to prevent further renal damage. Plan for earliest possible tapering of opioid.	P.C.A. allows patients to have some degree of control over their pain. Avoiding morphine or hydromorphone prevents morphine-3-glucuronide accumulation which counteracts analgesia particularly in renal failure. Ketamine use causes opioid sparing, improves tolerance and opioid-hyperalgesia via NMDA receptor antagonism and mitigates opioid use disorder.

32-year-old man with chronic abdominal pain receiving daily p.r.n. oxycodone admitted to the ICU after major abdominal surgery.	Acute pain from surgery superimposed on chronic pain. Unable to administer enteral medications because of gut ileus.	Place epidural catheter. Convert scheduled oxycodone to IV equivalents. Change to opioid P.C.A. Add ketamine infusion or IV acetaminophen.	These multimodal techniques provide effective analgesia while reducing opioid exposure. The supplemental opioids meet baseline opioid needs and prevent opioid withdrawal. P.C.A. empowers patients to have some degree of control over their pain. Ketamine ameliorates tolerance and opioid-hyperalgesia.
---	--	--	---

Abbreviations: P.C.A.= Patient controlled analgesia; P.R.N.= *Pro re nata*