

# Early use of high-dose insulin euglycaemic therapy for verapamil toxicity

Christopher P Nickson and Mark Little

*A 49-year-old man presented with verapamil toxicity complicated by hypotension and a junctional rhythm, in the context of deliberate self-poisoning with multiple drugs. The patient's hypotension normalised following the early use of high-dose insulin euglycaemic therapy (HIET), without the need for additional vasopressors; it recurred when HIET was prematurely stopped, and again stabilised when HIET was recommenced.*

*Consideration should be given to the early use of HIET in treating severe calcium channel blocker toxicity, rather than as a last resort after other therapies have failed. (MJA 2009; 191: 350-352)*

## Clinical record

A 49-year-old man presented to a peripheral hospital emergency department 1–1.5 h after deliberately ingesting multiple medications: verapamil (unknown amount), controlled-release morphine sulfate (20 × 30 mg), diazepam (50 × 5 mg) and tramadol (15 × 200 mg). He was a smoker with a history of depression, ethanol misuse, chronic back pain, hypertension and a previous instance of deliberate self-poisoning with multiple drugs.

At initial assessment, the patient's vital signs were: temperature, 36.8°C; pulse, 84 beats/min; respiratory rate, 19 breaths/min; blood pressure (BP), 115/80 mmHg; oxygen saturation, 95% on room air; and Glasgow Coma Scale score, 14/15. He was drowsy, disorientated to time, and had 2 mm pupils that were equal and reactive. He had ataxia, dysarthria and was generally weak. His breath ethanol concentration was 0.172 mg%.

Thirty minutes later, the patient was hypotensive (BP, 85/45 mmHg; pulse, 72 beats/min). He was treated with oxygen, 2 L intravenous (IV) 0.9% saline, a naloxone IV infusion (400 µg/h), and 10 mL IV 10% calcium gluconate. He was transferred to a tertiary referral centre and, on arrival (at 2.25 h after initial presentation), his BP was 85/45 mmHg, pulse was 64 beats/min, and an electrocardiogram (ECG) showed a junctional rhythm. Rapid sequence intubation (with propofol 40 mg + 20 mg IV and suxamethonium 100 mg IV) was performed for airway protection and ongoing management of haemodynamic instability, while metaraminol IV boluses (total, 0.7 mg) were administered. Activated charcoal (50 g) was given, and sedation was maintained with a propofol infusion.

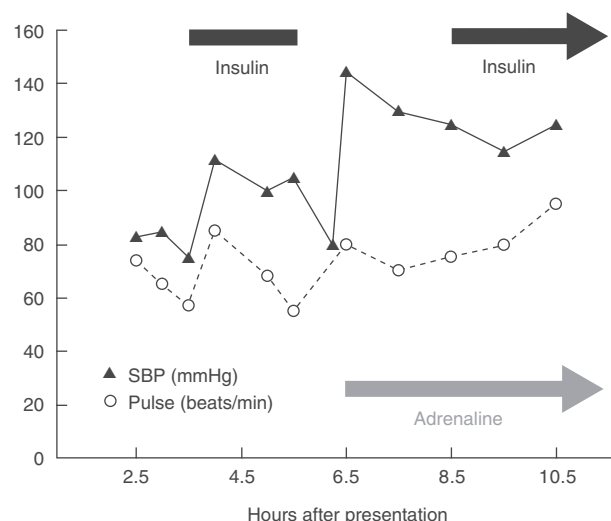
The patient remained hypotensive (BP, 75/45 mmHg; pulse, 56 beats/min) after intubation, so high-dose insulin euglycaemic therapy (HIET) was commenced at 3.5 hours after presentation. He was given dextrose (50 mL 50% glucose) and a 30 IU short-acting insulin IV bolus (~0.5 IU/kg), followed by a further bolus of 50 mL 50% glucose and a short-acting insulin IV infusion (30 IU/h) (Box 1). His BP improved to 110/70 mmHg at 4 hours, with a pulse of 82 beats/min and sinus rhythm on ECG, and he remained stable during transfer to the intensive care unit (ICU).

The insulin infusion was abruptly stopped 5.5 hours after presentation, on arrival in the ICU. The patient's hypotension subsequently recurred (systolic BP, 70 mmHg; pulse, 75 beats/min), prompting administration of 500 mL IV Gelofusine (a colloidal plasma volume substitute; B. Braun, Sydney, NSW) and commencement of an adrenaline IV infusion (20 µg/min). The insulin infusion (30 IU/h) was restarted at 8.5 hours, and his BP again stabilised (Box 1). The propofol IV infusion was gradually

increased from 50 mg/h to 150 mg/h between 5.5 hours and 11.5 hours after presentation, and a noradrenaline IV infusion was commenced at 9.5 hours to maintain normotension. At 15.5 hours, pulmonary artery catheter measurements showed a high cardiac index (5.1 L/min/m<sup>2</sup>; reference range [RR], 2.5–4.0 L/min/m<sup>2</sup>) and a low systemic vascular resistance index (1047 dynes-s/cm<sup>5</sup>/m<sup>2</sup>; RR, 1900–2400 dynes-s/cm<sup>5</sup>/m<sup>2</sup>); the patient's pulse was 85 beats/min and BP was 140/60 mmHg.

HIET was continued and the patient remained haemodynamically stable. Adrenaline and noradrenaline were weaned off (at 17.5 hours and 23.5 hours, respectively), despite the propofol infusion rate being increased to 500 mg/h at 18.5 hours. Once

## 1 Early changes in the patient's systolic blood pressure (SBP) and heart rate, relative to treatment with high-dose insulin and adrenaline infusions



Following administration of a 0.5 IU/kg short-acting insulin bolus 3.5 hours after presentation, a short-acting insulin intravenous infusion (0.5 IU/kg/h) was commenced (black line), and the patient's blood pressure improved. The infusion was abruptly discontinued 2 hours later and the patient again became hypotensive. This resolved following commencement of an adrenaline infusion (20 µg/min) (grey arrow), and the insulin infusion (0.5 IU/kg/h) was restarted 8.5 hours after presentation (black arrow).

sedation was withdrawn, the patient was extubated at 26.5 hours. Insulin was weaned over 5 h and discontinued at 30.5 hours; dextrose was stopped 1 h later. The patient was transferred to the observation ward and discharged well later that day, after psychiatric clearance.

During treatment with HIET, the patient's blood glucose levels were checked hourly and ranged from 6.6 mmol/L to 13.2 mmol/L (RR, 3.5–5.5 mmol/L). He received about 25 g/h of dextrose (mostly as 50% dextrose infusions). Potassium and magnesium levels were also serially monitored; the minimum potassium level was 2.7 mmol/L (RR, 3.5–5.0 mmol/L) at 8.75 hours, and the magnesium level troughed at 0.5 mmol/L (RR, 0.75–1.05 mmol/L) at 15 hours. These were corrected with a total of 200 mmol of potassium chloride and 20 mmol magnesium chloride.

## Discussion

HIET is an increasingly accepted therapy for calcium channel blocker (CCB) toxicity, but reports of its use are limited and it remains controversial. Indeed, the scarcity of severe CCB poisoning cases means that a randomised controlled trial of HIET may not be feasible.<sup>1</sup> Treating clinicians who seek advice from clinical toxicologists are often hesitant about the high doses required and the potential for adverse effects. Such hesitancy is potentially harmful, as a hypotensive patient with a CCB overdose who otherwise appears well is at risk of abrupt lethal cardiovascular collapse.<sup>1</sup> HIET is traditionally recommended after other therapies have failed.<sup>2,3</sup> This case report aims to raise awareness of HIET for the treatment of CCB toxicity and supports its early use, rather than as a last resort.<sup>4</sup>

Verapamil binds the  $\alpha_1$  subunit of L-type calcium channels, preventing the intracellular influx of calcium.<sup>5</sup> These channels are functionally important in cardiac myocytes, vascular smooth muscle cells, and islet beta cells.<sup>5</sup> Verapamil's cardiac toxicity results from excessive negative inotropy, negative chronotropy and negative dromotropy, characterised by myocardial depression, sinus bradycardia, and atrioventricular node blockage.<sup>4</sup> Vascular smooth muscle tone is impaired, resulting in decreased afterload, systemic hypotension, and coronary vasodilation.<sup>5</sup>

Less well known are the metabolic effects of CCBs such as verapamil. Under the stress of the drug-induced shock state, the cardiac myocytes shift from using free fatty acids, their favoured "resting state" energy substrate, to carbohydrates.<sup>3,4</sup> CCB toxicity also impairs the uptake of glucose and free fatty acids by cardiac myocytes<sup>3,4</sup> and inhibits calcium-dependent mitochondrial activity required for glucose catabolism.<sup>3,4</sup> Furthermore, insulin release is dependent on calcium influx into islet beta cells through L-type calcium channels.<sup>3,4</sup> Thus, CCB toxicity can cause hypoinsulinaemia,<sup>3,4</sup> which, in conjunction with CCB-induced insulin resistance, may lead to hyperglycaemia and a ketoacidotic state.<sup>6</sup>

Atropine, calcium boluses and infusions, glucagon, inotropes, vasopressors, and cardiac pacing have all been advocated for managing CCB toxicity, despite questionable efficacy.<sup>3,4,7–9</sup> For instance, the evidence for glucagon is limited to small, non-blinded animal studies where no survival benefit or improvement in mean arterial pressure was shown, although heart rate improved in some cases.<sup>7</sup> Rarely, heroic measures such as extracorporeal circulatory support and intra-aortic balloon counterpulsation have been successfully employed.<sup>5,10</sup>

HIET was first used to treat verapamil toxicity in humans in 1993, with a favourable outcome.<sup>6</sup> Since then, in addition to

animal studies, there have been nearly 70 cases reporting the beneficial use of HIET in humans, with an overall survival rate of 85%.<sup>8</sup> However, to our knowledge, use of HIET in humans before the administration of glucagon or vasopressors has only been reported once.<sup>6</sup> There have been some reports of HIET failure in treating CCB toxicity, although the dosing of insulin was low or uncertain, or it was used late.<sup>6,8</sup> Early use of HIET may be more effective than HIET rescue therapy, as CCB-induced insulin resistance is greatest in the first 24 hours<sup>2</sup> and the maximal haemodynamic benefit of HIET may not occur immediately.<sup>6</sup>

HIET may allow the heart to overcome metabolic starvation in CCB toxicity, which compounds the direct CCB impairment of myocardial contractility.<sup>3,4</sup> Insulin increases glucose and lactate uptake by myocardial cells and improves function without increased oxygen demand.<sup>11,12</sup> It also induces pyruvate dehydrogenase, hastening myocardial lactate oxidation, and helps clear the cytosol of glycolytic byproducts that impair calcium handling and cause diastolic dysfunction.<sup>3</sup> Insulin promotes excitation–contraction coupling and contractility because enhanced glycolysis promotes increased sarcoplasmic reticulum-associated calcium ATPase activity and increased cytoplasmic calcium concentrations, and promotes calcium entrance into mitochondria and sarcolemma.<sup>3</sup>

HIET may be best used adjunctively with other measures such as catecholamines, for two reasons. First, insulin-mediated inotropy is not catecholamine-mediated, and is not affected by  $\beta$  blockers.<sup>3</sup> Second, although insulin appears to improve myocardial contractility, it has no chronotropic effect and may cause vasodilation.<sup>3,8</sup>

HIET is safe, and adverse events are predictable, uncommon, and easily managed.<sup>2,8</sup> The maximum safe dose of insulin is unknown, but loading doses of 0.5–1.0 IU/kg followed by infusions of 0.1–2.5 IU/kg/h are typically used.<sup>8</sup> Interestingly, neither the inadvertent administration of a 1000 IU insulin loading dose for verapamil toxicity<sup>13</sup> nor treatment of toxic cardiogenic shock for 2 days with a 6 IU/kg/h insulin infusion had any adverse effects.<sup>14</sup> Adverse effects of HIET include hypoglycaemia, hypokalaemia, hypomagnesaemia, and hypophosphataemia.<sup>2,6,8</sup> Although these are rarely clinically significant, they necessitate careful monitoring. Hypoglycaemia (blood glucose <3.3 mmol/L) occurred in 16% of 55 published cases,<sup>8</sup> and no cases of hypoglycaemia within 24 hours of CCB overdose were noted in Greene and colleagues' series of seven cases.<sup>2</sup> Greene et al also reported a mean dextrose requirement of 0.05 g/kg/h (range, 0–0.17 g/kg/h), although the mean blood glucose level exceeded the euglycaemic range.<sup>2</sup> Some cases of severe CCB toxicity in patients presenting with hyperglycaemia do not require any additional glucose administration despite high-dose insulin therapy,<sup>15</sup> and hypoglycaemia may be more likely in milder cases without marked hypotension.<sup>8</sup> In addition, hypokalaemia (potassium <3.5 mmol/L) was noted in only two patients in Greene et al's small series, with a minimum potassium level of 2.8 mmol/L.<sup>2</sup> Excessive correction of hypokalaemia should be avoided, because it reflects the intracellular shift of potassium from the extracellular compartment due to the action of insulin, rather than a potassium-depleted state.<sup>4</sup> Interestingly, hypokalaemia in HIET may augment myocardial contractility by enhancing calcium entry during systole, and increased intracellular potassium may have a membrane-stabilising effect in excitable cells.<sup>4,6</sup>

## 2 Recommended high-dose insulin euglycaemic therapy protocol,<sup>3,4,9</sup> based on the clinical experience of the Western Australian Toxicology Service, published case reports, reviews and animal studies

### Commence therapy with:

- Glucose 25 g (50 mL of 50% solution) IV bolus, unless marked hyperglycaemia (blood glucose > 22 mmol/L) is present
- Short-acting insulin 1 IU/kg bolus to maximally saturate insulin receptors

### Continue therapy with:

- Short-acting insulin infusion starting at 0.5 IU/kg/h and titrated every 30 min to a maximum of 5 IU/kg/h\*
- Dextrose 25 g/h IV infusion titrated to maintain euglycaemia (blood glucose, 5.5–14 mmol/L); central venous access may be required to allow use of concentrated solutions (eg, 50% dextrose) and limit excess volume administration

### Monitor:

- Glucose — every 20 min for first hour, then every 1 h
- Potassium — replace only if < 2.5 mmol/L and there is a source of potassium loss

### Therapeutic end points:

- Improvement in myocardial ejection fraction (> 50%); increased BP (systolic BP > 90 mmHg in adults)
- Adequate heart rate (> 60 beats/min)
- Resolution of acidaemia; euglycaemia; adequate urine output (1–2 mL/kg/h)
- Reversal of cardiac conduction abnormalities (QRS interval < 120 ms)
- Improved mentation

Therapy is weaned after the withdrawal of other vasopressors, as cardiotoxicity resolves. Dextrose may be required after cessation of insulin.

IV = intravenous. BP = blood pressure. \* The maximum safe and effective rate of infusion is unknown but may be even higher than 5 IU/kg/h. In animal studies, insulin infusions as high as 10 IU/kg/h have been safely used.<sup>11</sup> ◆

## References

- 1 Levine MD, Boyer E. Hyperinsulinemia-euglycemia therapy: a useful tool in treating calcium channel blocker poisoning. *Crit Care* 2006; 10: 149.
- 2 Greene SL, Gawarammana I, Wood DM, et al. Relative safety of hyperinsulinaemia/euglycaemia therapy in the management of calcium channel blocker overdose: a prospective observational study. *Intensive Care Med* 2007; 33: 2019–2024.
- 3 Megarbane B, Karyo S, Baud FJ. The role of insulin and glucose (hyperinsulinaemia/euglycaemia) therapy in acute calcium channel antagonist and beta-blocker poisoning. *Toxicol Rev* 2004; 23: 215–222.
- 4 Lheureux PE, Zahir S, Gris M, et al. Bench-to-bedside review: hyperinsulinaemia/euglycaemia therapy in the management of overdose of calcium-channel blockers. *Crit Care* 2006; 10: 212.
- 5 Salhanick SD, Shannon MW. Management of calcium channel antagonist overdose. *Drug Saf* 2003; 26: 65–79.
- 6 Yuan TH, Kerns WP 2nd, Tomaszewski CA, et al. Insulin-glucose as adjunctive therapy for severe calcium channel antagonist poisoning. *J Toxicol Clin Toxicol* 1999; 37: 463–474.
- 7 Bailey B. Glucagon in beta-blocker and calcium channel blocker overdoses: a systematic review. *J Toxicol Clin Toxicol* 2003; 41: 595–602.
- 8 Kerns W 2nd. Management of beta-adrenergic blocker and calcium channel antagonist toxicity. *Emerg Med Clin North Am* 2007; 25: 309–331; abstract viii.
- 9 Murray L, Daly F, Little M, Cadogan M. Toxicology handbook. Sydney: Elsevier Australia, 2007.
- 10 Baud FJ, Megarbane B, Deye N, Leprince P. Clinical review: aggressive management and extracorporeal support for drug-induced cardiotoxicity. *Crit Care* 2007; 11: 207.
- 11 Holger JS, Engebretsen KM, Fritzlar SJ, et al. Insulin versus vasopressin and epinephrine to treat beta-blocker toxicity. *Clin Toxicol (Phila)* 2007; 45: 396–401.
- 12 Kline JA, Leonova E, Raymond RM. Beneficial myocardial metabolic effects of insulin during verapamil toxicity in the anesthetized canine. *Crit Care Med* 1995; 23: 1251–1263.
- 13 Place R, Carlson A, Leiken J, et al. Hyperinsulin therapy in the treatment of verapamil overdose [abstract]. *J Toxicol Clin Toxicol* 2000; 38: 576–577.
- 14 Holger JS, Engebretsen KM, Marini JJ. High dose insulin in toxic cardiogenic shock. *Clin Toxicol (Phila)* 2009; 47: 303–307.
- 15 Boyer EW, Shannon M. Treatment of calcium-channel-blocker intoxication with insulin infusion. *N Engl J Med* 2001; 344: 1721–1722.

(Received 8 Mar 2009, accepted 28 Jul 2009)

□

In conclusion, we advocate consideration of the early use of HIET (as detailed in Box 2) for the prevention and treatment of life-threatening complications from potentially lethal CCB overdoses. HIET is safe, inexpensive and freely available, and suitable for use even in remote settings before transfer to a referral centre.

## Competing interests

None identified.

## Author details

Christopher P Nickson, MB ChB, DTMH, GCertClinTox, Intensive Care Registrar<sup>1</sup>

Mark Little, FACEM, DTMH, MPHTM, Emergency Physician and Clinical Toxicologist<sup>2,3</sup>

1 Intensive Care Unit, Sir Charles Gairdner Hospital, Perth, WA.

2 Emergency Department, Royal Perth Hospital, Perth, WA.

3 Western Australian Poisons Information Centre, Sir Charles Gairdner Hospital, Perth, WA.

Correspondence: hiet.verapamil@gmail.com

### Hi dose Insulin Protocol – Mayo Clinic

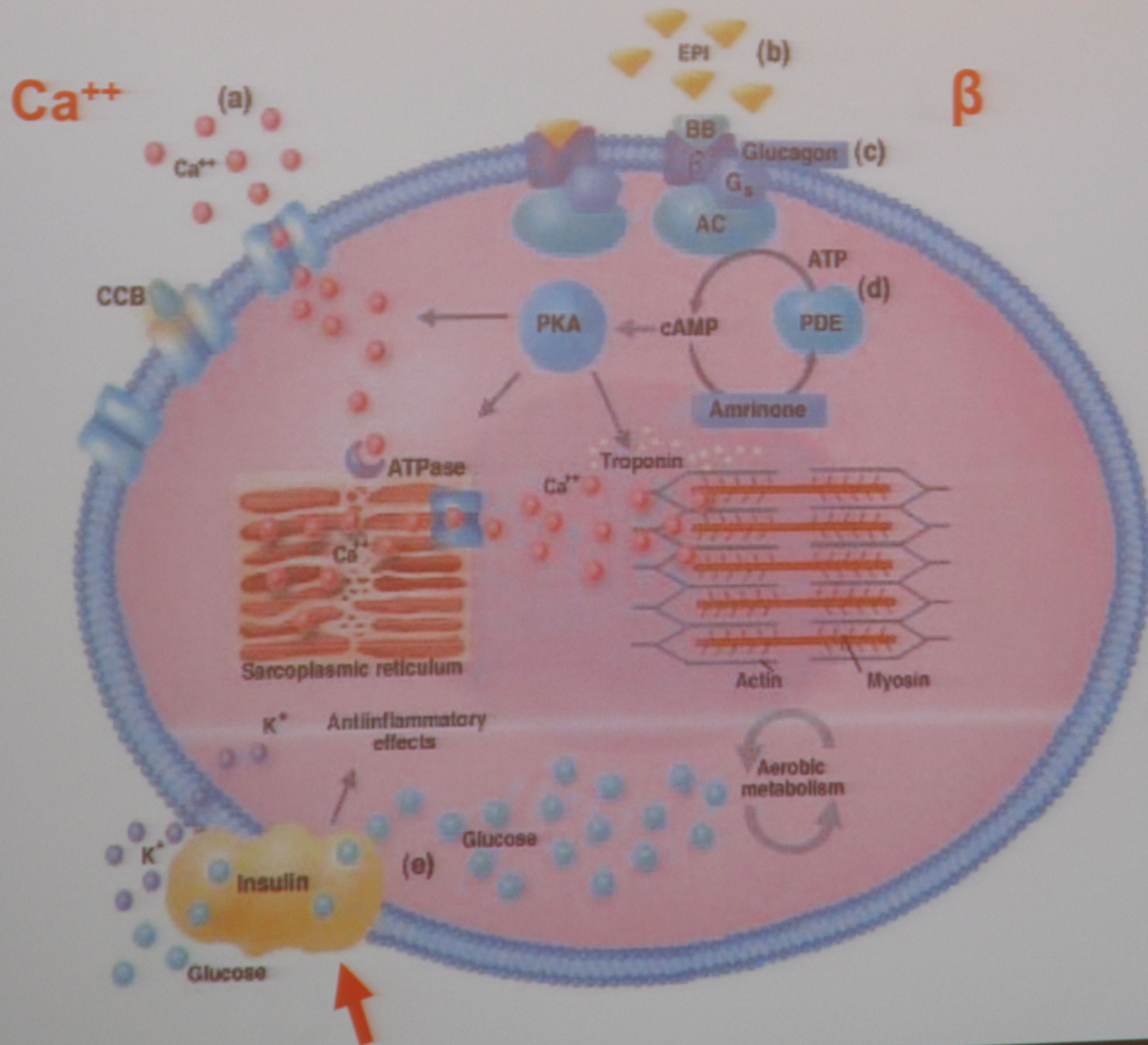
<b>Insulin Orders:</b>	
Insulin regular (Novolin R) 100 units.ml. 1 unit/kg IV push then start high dose infusion	IV Once Starting today
Insulin regular 10 units/ml (high dose) infusion 1-10 units/kg/hour IV Titrate to MAP greater than 65	1-10 Units/kg/hr IV Titrate. Starting today
<b>Dextrose Orders, initiate with insulin infusion</b>	
D50W 25 gm IV PRN to maintain blood glucose 100 – 200 mg/dL	25 gm IV, PRN based on blood sugar. Starting today
D10W IV infusion to maintain blood glucose greater than 100 mg.dL. Start with insulin infusion.	At 100 mL/hr IV. Titrate starting today.



# Novel Therapies

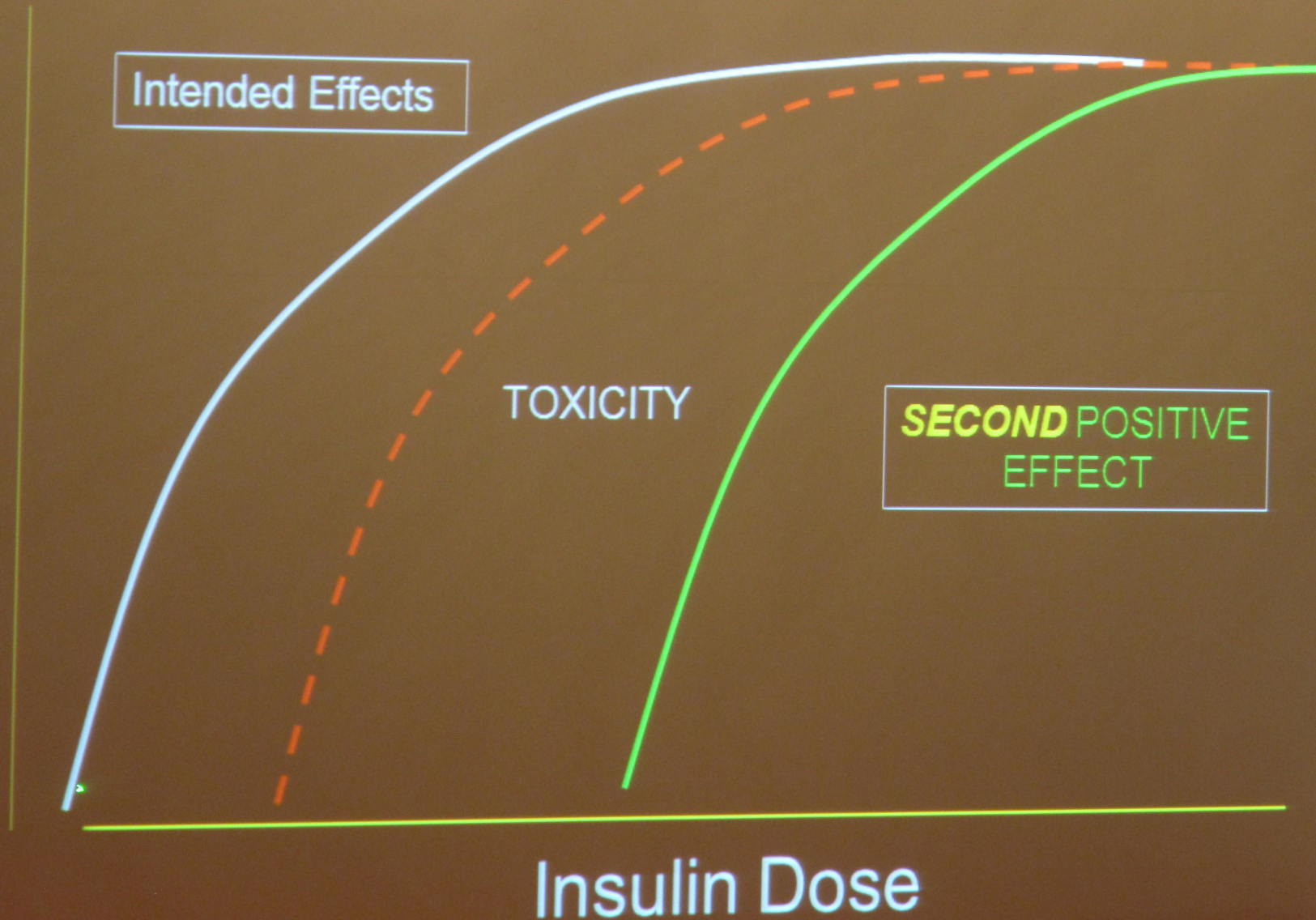
- Insulin
  - High Dose-Euglycemia (0.5-1.0 unit/kg/hr)
  - *Super* High Dose (>1.0 unit/kg/hr)
- Lipid Emulsion
  - Fat soluble drugs
- Levosemdan for  $\text{Ca}^{++}$  Channel Blockers







# Ranges of Therapy and Toxicity





# Hemodynamic Effects of *High Dose* Insulin

- Myocardial Performance
  - Calcium dependent
  - Calcium independent
    - Cellular / mitochondrial energetics
- Vascular Smooth Muscle Relaxation
  - Systemic, coronary & pulmonary vessels
  - Endothelial NO synthase (eNOS) activation
    - PI3K pathway?



# Insulin *Cardiovascular* Therapy

- Ischemia-Reperfusion
- Hypoxia
- Congestive Heart Failure (?)
- Post-Pump Cardiac Dysfunction
- Myocardial Ischemia
- Cardio-Toxic Overdosage / Poisoning
  - $\beta$ -Blockers
  - $\text{Ca}^{++}$  Channel Blockers
  - Bupivacaine
    - Other  $\text{Na}^+$  Channel Blockers?



# Research Hypotheses

- Insulin's effects on *hemodynamics* continue into a dosing range far above that which achieves *glucose* homeostasis.
- **Off-setting** insulin's depression of glucose and potassium levels may allow safe exploitation of insulin's inotropy and vasodilatory properties into this high-dose range.



# RESULTS SUMMARY

- INSULIN

- 100% *Survival to 4hrs*
- Resolution of Hypotension
- Dramatic Increase in CO with small improvement in HR

- VASO/EPI

- 100% *death by 2hrs*
- Worsening hypotension
- An early dramatic increase in SVR then a drop in SVR as death approached
- CO decreased as SVR increased



# CONCLUSIONS

- INSULIN

- Improved survival in  $\beta$ -Blockade is due to CO recovery primarily from INOTROPIC effects
- Insulin euglycemia therapy should be considered early in the treatment of beta-blocker induced hypotension

- VASO/EPI

- Early death is due to lack of cardiac inotropy that is unable to overcome the VASOPRESSOR effects
- Vaso/EPI should be avoided in beta-blocker OD



# Clinical Translation of HDI ?

- 65 y.o. woman multi-drug overdose / ingestion
- No prior cardiovascular or pulmonary disease
- Atenolol, Venlafaxine, *Amitriptylene*\*\*
- Refractory to pressors and moderate dose insulin, Glucagon, Epi, Atropine, Calcium



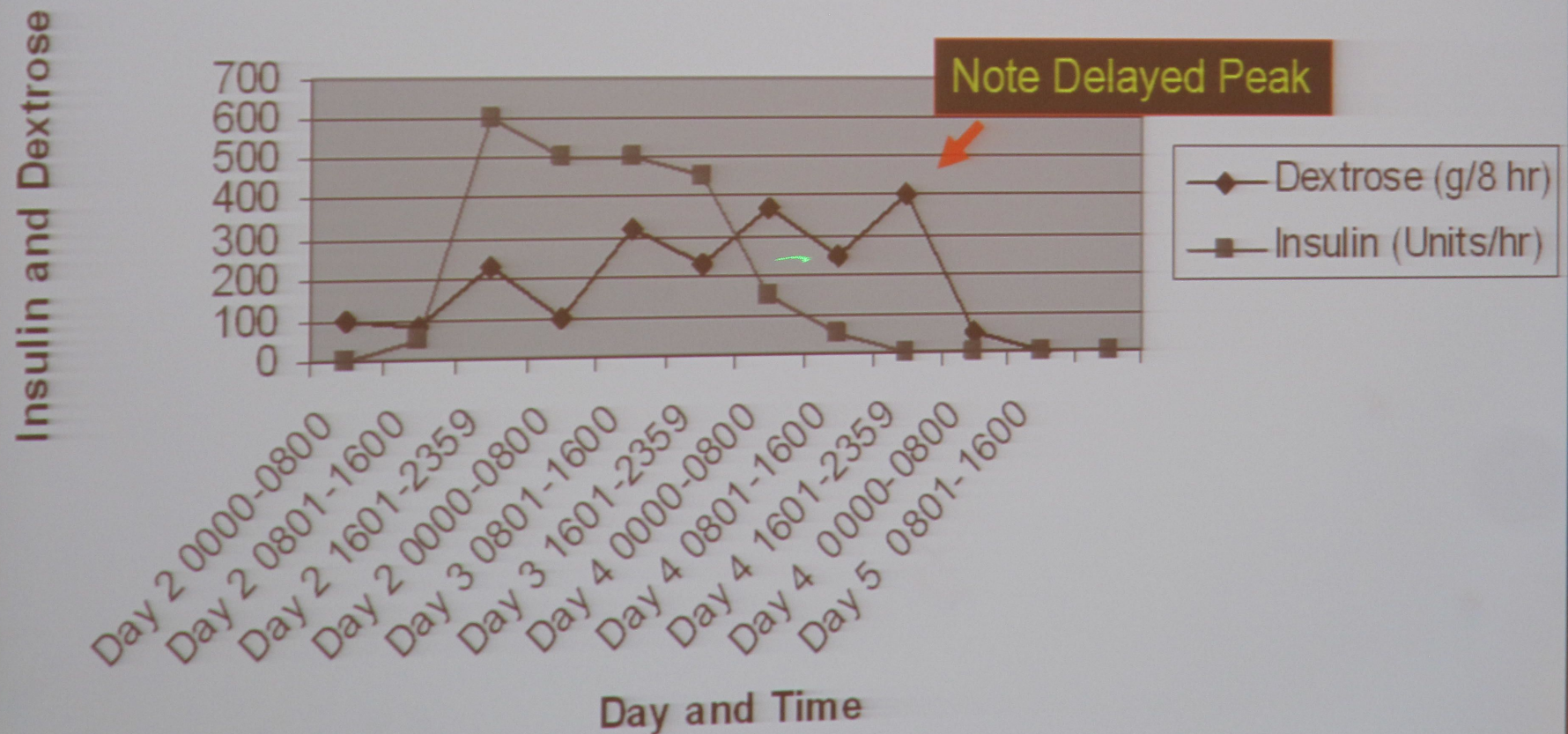
# Clinical Translation of HDI ?

- “Terminal Shock” after several minutes of cardiac arrest
- **Very** high dose insulin begun
  - 1 u/kg/hr increments q 10 min
  - Near immediate improvement in urinary flow, skin temperature and metabolic acidosis
  - Cardiac Output rose from 3.5 to 11 L/min
  - Normal CVP and Wedge
- High Functioning Survival



# Glucose Requirement

Insulin and Dextrose Infusion Rates





# Consecutive HDI Case Series

- Twelve Consecutive patients were treated with HDI protocol. Age range: 19-65 years (mean 43).
- Primary toxins:  $\beta$ -blocker (BB) in 5,  $\text{Ca}^{++}$  channel blocker (CCB) 1, combined BB/CCB (4), TCA (1), polydrug (1).
- Two patients had pulseless electrical activity (PEA) cardiac arrest prior to HDI.
- Six patients failed pre-existing vasopressor therapy, and 5 of these were tapered off vasopressors while on HDI; 1 completed therapy with HDI and a vasopressor.
- IV fat emulsion 2 patients; initiation of HDI during cardiac arrest, and unresponsive to HDI at 10 units/kg/hr.



# Consecutive HDI Case Series

- An initial HDI bolus was used in all 12 patients.
- Mean maximum HDI infusion rate: 8.4 units/kg/hr (range: 0.5-21).
- Mean duration HDI 25.5 hrs (range 4-60).
- Mean duration of glucose infusion post-HDI: 21 hrs.



# Clinical Outcomes

11 of 12 patients survived. One patient expired 9 hours into HDI therapy from cardiac arrest shortly after the HDI infusion was stopped and a vasopressor was re-initiated (protocol deviation).

Necrotic digits in one patient with prior clotting disorder. High dose NE and INR reversal with FFP were administered prior to HDI therapy.

One patient was discharged with mild anoxic injury thought due to prolonged PEA arrest prior to HDI therapy.



# Conclusion

HDI therapy, using a pre-established protocol that urges avoidance of vasopressors, was effective in the treatment of Toxin-Induced Cardiogenic Shock.

HDI related adverse events were mild and infrequent. Known adverse sequelae were not related to HDI therapy.



## MEDICATIONS

### Insulin Orders

- |   |  |
|---|--|
| <input type="checkbox"/> insulin regular (HIOVOLIN R) 100 units/mL, 1 unit/kg IV push, then start high dose infusion          | IV, ONCE Starting today                      |
| <input type="checkbox"/> insulin regular 10 units/mL (HIGH DOSE) infusion 1-10 unit/kg/hour IV titrate to MAP greater than 65 | 1-10 Units/kg/hr, IV, TITRATE Starting today |

### Dextrose Orders, initiate with insulin infusion

- |  |   |
|--|---|
| <input type="checkbox"/> D50W (D50) 25g IV PRN to maintain blood glucose 100 mg/dL - 200 mg/dL                           | 25 g, IV, PRN BASED ON BLOOD SUGAR Starting today |
| <input type="checkbox"/> D10W IV infusion to maintain blood glucose greater than 100 mg/dL. Start with insulin infusion. | at 100 mL/hr, IV, TITRATE Starting today          |



# A Few Key Points

- Monitor *Cardiac Output Continuously*
  - Non-Invasive
  - BP is not an adequate monitor
- *Titrate* to Effect *Decrementally*
- *Central* Monitoring of *Glucose* and Potassium
- Consider “Lipid Sink” co-Treatment



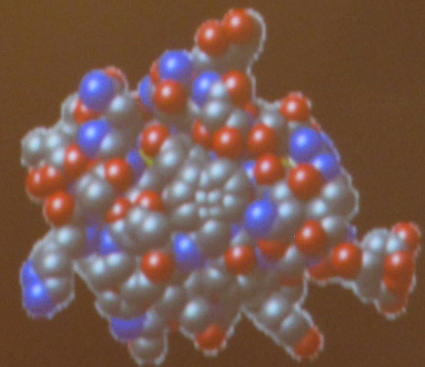
# Summary

- Insulin in doses much higher than needed for glucose control has potent *hemodynamic* actions
  - Inotropic
  - Vasodilatory
- Glucose and potassium requirements
  - do *not* increase in direct proportion to insulin dosage
  - tend to rise with shock *resolution*
  - Are manageable
- Because HDI bridges across a spectrum of cardiotoxic mechanisms and merits further investigation as an early 'first-line' approach to *mixed drug overdoses of uncertain composition*



# Conjecture

- Other ICU conditions characterized by transient and potentially reversible hemodynamic compromise may benefit from HDI inotropic action, alone or in combination with vasopressors
  - Sepsis
  - Myocardial ischemia





# Hemodynamic Effects Of *High Dose* \*\* Insulin

---

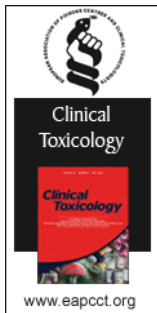
- Myocardial Contractility--*Strong*
- Vasodilation---*Moderate*
- Heart Rate and Rhythm—*Negligible*
  - A possible rationale for simultaneous lipid infusion and levosemendan

\*\* *1-10 units/kg/hr*



[Home](#) [Journals](#) [Books](#) [Resources](#) [Services](#) [Subscribe](#)Username:  Password:   [Register](#) [Athens](#) [Shibboleth](#)[Advanced Search](#)

## Clinical Toxicology

[Home](#) [All Issues](#) [Current Issue](#) [Early Online](#) [Aims & Scope](#) [Editorial Board](#) [Instructions for Authors](#)[Issue TOC](#) | [Previous Article](#) | [Next Article](#)

### High dose insulin in toxic cardiogenic shock

April 2009, Vol. 47, No. 4, Pages 303-307

Joel S. Holger<sup>1</sup>, Kristin M. Engebretsen<sup>1</sup>, John J. Marini<sup>2</sup><sup>1</sup>Department of Emergency Medicine, Regions Hospital, St. Paul, MN, USA<sup>2</sup>Department of Internal Medicine, University of Minnesota Medical School, Minneapolis, MN, USAAddress correspondence to Joel S. Holger, Department of Emergency Medicine, Regions Hospital, 640 Jackson Street, St. Paul, MN, 55101, USA. E-mail: [joel.s.holger@healthpartners.com](mailto:joel.s.holger@healthpartners.com)[HTML](#)[PDF \(193 KB\)](#)[PDF Plus \(204 KB\)](#)[Reprints](#)[Permissions](#)

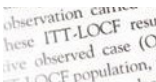
#### Request a Trial



#### Email Content Alerts



#### Why publish with us



**Objective.** To report the successful use of high dose insulin (HDI) in previously unreported insulin dosing ranges in a patient with severe myocardial toxicity due to an amitriptyline and citalopram overdose. **Case Report.** A 65-year-old female presented in respiratory arrest, which was followed by bradycardic pulseless electrical activity after ingesting multiple medications. After a prolonged resuscitation, the patient was maintained only on infusions of norepinephrine (40 mcg/min), vasopressin (4 units/h), insulin (80 units/h), and sodium bicarbonate. Due to a deteriorating clinical condition and limited prognosis, the insulin infusion was titrated incrementally upwards to 600 units/h (6 units/kg/h) over a 5 h time period while simultaneously completely weaning off both vasopressors. She developed brisk pulses and warm extremities, and her cardiac output nearly tripled. After 2 days of stabilization the insulin was slowly tapered, and the patient recovered. **Discussion.** HDI as a single cardiovascular agent significantly improved clinical and cardiovascular parameters after the failure of vasopressor therapy in severe cardiovascular toxicity. Higher doses of insulin than previously recommended may be needed in toxic poisonings when severe myocardial depression is present.

### Keywords

[Insulin](#), [Overdose](#), [Cardiogenic shock](#), [Tricyclic antidepressant](#), [High dose insulin](#)[HTML](#) | [PDF \(193 KB\)](#) | [PDF Plus \(204 KB\)](#) - [What is PDF Plus?](#)

#### Quick Links

[Add to Favourites](#)  
[Download Citations](#)  
[Email TOC Alert](#)[Related Articles](#)  
[RSS TOC Alerts](#)  
[Email Citation Alert](#)

#### Users Also Read

[Insulin-dependent rescue from cardiogenic shock is not mediated by phospholamban phosphorylation](#)[2009 Annual Report of the American Association of Poison Control Centers' National Poison Data System \(NPDS\): 27th Annual Report](#)[Do you really need that emergency drug screen?](#)[More »](#)

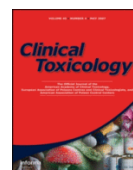
#### Authors

[Joel S. Holger](#)  
[Kristin M. Engebretsen](#)  
[John J. Marini](#)

#### Forward Citations

[High-dose insulin therapy in beta-blocker and calcium channel-blocker poisoning](#)[Cardiovascular and Metabolic Effects of High-dose Insulin in a Porcine Septic Shock Model](#)[Intentional overdose with cardiac arrest treated with intravenous fat emulsion and high-dose insulin](#)

#### Purchase



Informa Healthcare offers a unique range of publishing formats.