

This Provisional PDF corresponds to the article as it appeared upon acceptance. Copyedited and fully formatted PDF and full text (HTML) versions will be made available soon.

Changes in hospital mortality for United States intensive care unit admissions from 1988 to 2012

Critical Care 2013, **17**:R81 doi:10.1186/cc12695

Jack E Zimmerman (jackcernerapache@yahoo.com)

Andrew A Kramer (akramer@cerner.com)

William A **Knaus** (WKnaus@northshore.org)

ISSN 1364-8535

Article type Research

Submission date 12 November 2012

Acceptance date 11 April 2013

Publication date 27 April 2013

Article URL <http://ccforum.com/content/17/2/R81>

This peer-reviewed article can be downloaded, printed and distributed freely for any purposes (see copyright notice below).

Articles in *Critical Care* are listed in PubMed and archived at PubMed Central.

For information about publishing your research in *Critical Care* go to

<http://ccforum.com/authors/instructions/>

**Changes in hospital mortality for United States intensive care unit admissions
from 1988 to 2012**

Jack E Zimmerman¹, Andrew A Kramer^{2*}, and William A Knaus³

¹ Department of Anesthesiology and Critical Care Medicine, George Washington University, 17612 Coatbridge Place, Olney, MD, 20832, USA

² Cerner Corporation, 1953 Gallows Rd., Suite 500, Vienna, VA, 22182, USA

³ Center for Clinical and Research Informatics, North Shore Research Institute, 1001 University Place, Evanston, IL, 60201, USA

Emails:

JEZ: jackcernerapache@yahoo.com

AAK: akramer@cerner.

WAK: WKnaus@northshore.org

* Corresponding author

Abstract

Introduction: A decrease in disease-specific mortality over the last twenty years has been reported for patients admitted to United States (U.S) hospitals, but data for intensive care patients is lacking. The aim of this study was to describe changes in hospital mortality and case-mix using clinical data for patients admitted to multiple U.S. intensive care units (ICUs) over the last 24 years.

Methods: We carried out a retrospective time series analysis of hospital mortality using clinical data collected from 1988 to 2012. We also examined the impact of ICU admission diagnosis and other clinical characteristics on mortality over time. The potential impact of hospital discharge destination on mortality was also assessed using data from 2001 to 2012.

Results: For 482,601 ICU admissions there was a 35% relative decrease in mortality from 1988 to 2012 despite an increase in age and severity of illness. This decrease varied greatly by diagnosis. Mortality fell by >60% for patients with chronic obstructive pulmonary disease, seizures and surgery for aortic dissection and subarachnoid hemorrhage. Mortality fell by 51%-59% for six diagnoses, 41%-50% for seven diagnoses, and 10%-40% for seven diagnoses. The decrease in mortality from 2001 to 2012 was accompanied by an increase in discharge to post-acute care facilities and a decrease in discharge to home.

Conclusions: Hospital mortality for patients admitted to U.S. ICUs has decreased significantly over the past two decades **despite** an increase in severity of illness. Decreases in mortality were **diagnosis specific** and appear attributable to improvements in **quality** of care, but **changes** in **discharge destination** and other confounders may also be responsible.

Key Words: Intensive care unit, hospital mortality, time trends, post-acute care, patient discharge, severity of illness

Introduction

Over the last two decades there has been a decrease in mortality for patients admitted to U.S. hospitals. Among Medicare patients who may or may not have been admitted to an ICU, risk adjusted mortality fell by 18% to 46% between 1994 and 2007 [1,2]. **Disease specific decreases** in **30-day mortality** rate over time have also been reported for patients hospitalized for **congestive heart failure** (**50%**, 1993-2008) [3], **community acquired pneumonia** (**28%**, 1987-2005) [4]; and **surgery** for **subarachnoid hemorrhage** (**50%**, 1980-2005)[5], **coronary artery bypass graft** (**21%**, 1999-2008), and other high-risk procedures [6]. Changes in hospital mortality have also been reported for U.S. patients with disorders commonly managed in ICUs including **sepsis** (**9.9%**, 1979-2000) [7], acute **lung injury** (**9%**, 1996-2005) [8], and surgery for **aortic dissection** (**17%**, 1979-2003) [9].

To our knowledge temporal changes in hospital mortality have not been reported for patients admitted to U.S. ICUs. In contrast, multi-institutional data have shown **mortality reductions** over time in **Australia** and New Zealand (**4%**, 1993-2003) [10] and **England** (**13.4%**, 1998-2006) [11]. Studies focused on ICU prognostic systems have also reported decreases in hospital mortality over the last two decades. These studies have repeatedly demonstrated **“model fade”**: the **over prediction** of **mortality** when risk adjustment **models** are **applied** to more **recent** data [12]. As a result, the Simplified Acute Physiology Score (SAPS) [13], Mortality Probability Model (MPM) [14], and Acute Physiology and Chronic Health Evaluation (APACHE) [15] have required repeated **updating**. The developers of these systems have attributed mortality over prediction to increased **treatment effectiveness**, improved care **before** ICU admission, and more frequent **discharge** to **post-acute** care facilities [13-15].

Patients who are admitted to ICUs and survive hospitalization have a **high mortality** rate in the **six months** after discharge [16]. **Many** of these after post-discharge **deaths** are among patients transferred to **other** acute-care hospitals [17] or **long-term** acute care facilities [18,19]. These findings have raised concerns that hospital **discharge practices** may partially **account** for **reductions** in hospital mortality and **adversely impact** performance assessments that use **predicted** hospital **mortality** [17,20].

This study reports a time series analysis of hospital mortality among patients admitted to multiple U.S. ICUs over a 24-year period. The objectives of the study are:

to describe changes in mortality and case-mix among ICU admissions from 1988 to 2012; to describe mortality changes among ICU patients with specific diagnoses over the same period; and to present data about the potential impact of patient discharge destination on hospital mortality. Data comparisons used a Chi-square test for categorical measures and an analysis-of-variance test for continuous measures.

Materials and methods

We performed a retrospective analysis using data obtained from ICUs that had installed an **APACHE** system. Data for patients admitted before 2001 were obtained from published studies of APACHE. This emanated from two time periods: patient data for 1988-1989 was obtained from institutions randomly selected to represent U.S. hospitals [21], and for 1993-1996 from a nonrandomized cohort of U.S. institutions [22]. For admissions from 2001 onwards data were obtained for individual patients in the electronic APACHE database and grouped into three-year intervals. Multiple Institutional Review Boards (George Washington University, University of Maryland, Baystate Medical Center) waived the need for informed consent, deeming the use of these databases to not be human subject research requiring approval [15,21-24].

Patient data were generated as a result of patient care and collected for consecutive unselected ICU admissions. Demographic and clinical data were recorded on ICU day one, and vital status at ICU and hospital discharge. We did not

collect data for patients with burns, ICU stay <4 hours, age <16 years, and second or subsequent ICU admissions. Further details about data collection, variables, and the reliability of APACHE data have been described elsewhere [15,21,22].

Changes in mortality over time

We examined changes in hospital mortality for all eligible first ICU admissions from May 1988 to June 2012. Concurrently we tracked changes in mean age and the day 1 acute physiology score (APS) of APACHE III. We repeated these analyses for patients who were mechanically ventilated during ICU day 1. We did **not** compare **standardized mortality ratios** for each time interval due to the numerous **updates** made to the **APACHE** mortality **prediction** over this 24- year interval [15,22].

To account for differences in diagnostic coding during the study, we examined only **diagnoses** with a **consistent definition** across all time intervals. We excluded diagnoses with < 10% mortality during 1988-1989 to eliminate diagnoses that might have a small absolute change in mortality, which appears as a large relative mortality difference. These criteria produced 22 diagnoses. Using mortality rates in 1988-1989 as the baseline, we calculated the percent change in mortality in 2010-2012 for the 22 consistently defined diagnoses, and grouped them according to the percent decline in mortality: >60%, 51%-59%, 41%-50%, and 10%-40%. Age and severity of illness (APS) data for individual patients in the 1988-1989 and 1993-1996 cohorts were not available, thus we could not track diagnosis-specific changes in these variables.

Changes in discharge destination over time

For each ICU admission the discharge destination was recorded using a computerized pick list; this information was only available for admissions from 2001 to 2012. Discharge destinations included death, home (with or without home health care), another hospital (including long term acute care facilities), nursing home (including assisted living facilities), skilled nursing facility (including inpatient rehabilitation facilities), and other destinations. Discharge to a post-acute care (PAC) facility was defined by discharge to skilled nursing, inpatient rehabilitation, or assisted living facilities [24,25].

To assess the potential impact of changes in discharge destination on hospital mortality we examined the percentage of patients discharged home for each 3-year time interval from 2001-2012. We then repeated this analysis for each of the 22 diagnoses described above. To eliminate large changes in discharge destination due to small sample size we excluded diagnoses with < 2,500 admissions in 2010-2012, the interval with the smallest number of patients.

We did not perform statistical analysis of differences between time periods. Analysis was not performed because significance was assured by the large size of each cohort.

Results

The number of hospitals, ICUs, and patients included in each data collection interval from May 1988 to June 2012 are shown in Table 1. The total number of ICU admissions was 482,601 and each time interval included ≥ 40 hospitals and ≥ 40 ICUs. With the exception of 1988-1989, all intervals contained at least 35,000 first admissions. The characteristics of the hospitals and ICUs are shown in Table 2. In general, hospital bed-size, teaching status, and geographic region were well dispersed, except for a smaller proportion of hospitals in the Northeast. The modal type of ICU was mixed medical-surgical, but most unit types were represented across the study.

The characteristics of patients admitted from 1988 to 2012 are shown in Table 3. For each cohort patient age and severity of illness (APS) increased over time. There was a declining trend in the percentage of patients who were admitted post-operatively, from floors, or by direct admission. Conversely, an increasing percentage of patients were admitted from another hospital or a step down unit. During the overall study period ICU length of stay decreased by 23% and hospital length of stay decreased by 38%.

Changes in patient mortality

Temporal trends from 1988-1989 to 2010-2012 for aggregate mean hospital mortality, age, and acute physiology score (APS) for the 482,601 admissions are shown in Figure 1. There was a relative decrease in mean hospital mortality of 35% from 1988-1989 to 2010-2012 ($p < 0.001$). Age increased slightly over this time

period, but severity of illness (APS) increased by 7.4% ($p < 0.001$). When stratifying the mortality trends by whether or not a patient was ventilated on ICU day 1, the changes in mortality were parallel between the two strata. These changes are shown as supplementary information (Additional File 1, Figure S1).

Table 4 shows the 22 ICU admission diagnoses that were consistently defined throughout the study and had $\geq 10\%$ mortality during 1988-1989. There were 14 medical and 8 postoperative diagnoses. For 19 (90.5%) of the 22 diagnoses there was a $> 20\%$ mortality decline from 1988-1989 to 2010-2012. The remaining three diagnoses had a 0 - 20% decline. Compared to the 1988-1989 baseline there was a $\geq 60\%$ reduction in mortality for four diagnostic groups by 2010-2012 (Figure 2); they included surgery for aortic dissection (84%), surgery for subarachnoid hemorrhage, (77%), seizures (72%), and chronic obstructive pulmonary disease (66%). There was a 51%-59% mortality reduction for six diagnostic groups (Figure 3); they included surgery for intracerebral hemorrhage (58%), sepsis, urinary tract (57%), acute myocardial infarction (57%), surgery for gastrointestinal (GI) malignancy (57%), congestive heart failure (55%), and sepsis, non-urinary tract (51%).

There was a 41%-50% mortality reduction for seven diagnostic groups from 1988-1989 to 2010-2012 (Figure 4); they included intracerebral hemorrhage (48%), stroke (47%), GI bleeding, upper-non-variceal (47%), viral pneumonia (46%), surgery for multiple-trauma, including the head (41%), surgery for GI perforation (41%), and GI bleeding from varices (41%). There was a 10%-40%

reduction for five diagnostic groups (Figure 5); they included surgery for GI obstruction (32%), acute respiratory distress syndrome (31%), surgery for GI bleeding (20%), cardiac arrest (19%), and head trauma with chest, abdomen, pelvis, or spine injury (10%).

Changes in hospital discharge destination

Hospital death rates and the percentage of hospital discharges by destination for 427,533 ICU admissions from 2001 to 2012 are shown in Figure 6. Hospital death rates and the proportion of home discharges decreased over time. Conversely, the proportion of discharges to other hospitals and PAC facilities increased.

There were six diagnoses with sufficient sample size for analysis (> 2,500 admissions in 2010-2012); cardiac arrest, congestive heart failure, GI bleeding (upper, non-variceal) stroke, acute myocardial infarction, and sepsis (urinary tract). Changes in hospital discharge destination from 2001 to 2012 for patients with four of these diagnoses included an increased frequency of discharge to PAC facilities accompanied by a decreased hospital mortality rate and discharge to home. The exceptions were acute myocardial infarction (increase in discharge to home) and congestive heart failure (no change in discharge to home). These diagnosis specific results are shown graphically as supplementary information (Additional File 1, Figures S2 to S7).

Discussion

In a clinical database from multiple U.S. ICUs, we found that mortality at hospital discharge had a **relative decrease of 35%** (17.3% to 12.4%) from 1988-1989 to 2010-2012. This mortality reduction was accompanied by an **increase** in **severity** of illness and number of **chronic** health conditions, factors that typically pose an increase in mortality risk. There was also a **> 50% mortality reduction** across **ten diagnostic** categories over the same 24-year interval. Most of these dramatic relative decreases in hospital mortality rate occurred between 1988-1989 and 1993-1996. To the best of our knowledge, this is the longitudinal analysis of hospital mortality rates in a clinical (non-administrative) database for a large number of admissions to multiple U.S. ICUs.

The decrease in hospital mortality was **not uniform** across diagnostic categories. This may be because medical advances are typically related to the development of new therapies for specific diseases. The dramatic reductions in our study are **consistent** with prior **reports** of improved mortality for patients with **stroke** [1,2], acute **myocardial infarction** [1,2], **congestive heart failure** [1,3], chronic **obstructive pulmonary disease** [26], and **sepsis** [27]. Dramatic mortality reductions have also been reported after surgery for aortic dissection [9], and subarachnoid hemorrhage [28]. It is not our intention, however, to compare these disease specific mortality reductions with prior reports or relate them to new therapies.

Compared to reports from ICUs in **other countries** the changes in demographics and severity of illness were **similar**, but reductions in hospital

mortality were **larger** for these U.S. ICU patients [10,11]. Unfortunately, documented **changes** in the **accuracy** of **APACHE mortality predictions** over **time** [15,22] precluded evaluation of the impact of case-mix on changes in observed vs. predicted mortality rates between 1988 and 2012. Our study's retrospective design, differences in patient selection across time periods, lack of information about ICU structure, process, and use of disease-specific treatments, also make it impossible assess the reasons for and timing of these mortality decreases. We are therefore unable to comment on the impact of differing ICU types, staffing by critical care specialists, ventilator and sepsis bundles, and changes in disease-specific therapy on mortality.

We are unable to account for the impact of Medicare's prospective payment system in reducing mortality at hospital discharge. This legislation created a substantial shift in time U.S. patients spent in acute care hospitals to post-acute care (PAC) facilities between 1984 and 2002 [25,29]. These changes in discharge destination have previously been reported to shift hospital deaths to PACs [17,20], long-term acute care facilities [17,18], or other acute care hospitals [17,19]. Because we lacked data about discharge destination before 2001 we are unable to assess the impact of discharge destination on the dramatic fall in mortality between 1988-1989 and 1993-1996. Reductions in mortality might also be related to the 1998 Joint Commission performance measurement requirements for patients with acute myocardial infarction, heart failure, and pneumonia and subsequent public reporting in 2004 [30].

The **modest** reduction in hospital mortality (**10.5%**) from **2001** to **2012** may have been influenced, at least in part, by the increasing frequency of **discharge** to **PACs** and **other hospitals** (Figure 6). But it is also possible that severely ill patients discharged home in 2001-2003 might be going to PACs in 2010-2012, and thus not confounding the reduction in mortality. This emphasizes the need to obtain long-term survival data to properly assess temporal changes in mortality for patients surviving to hospital discharge [16-18].

The **reduction** in hospital mortality over this 24-year time interval explains **why** APACHE **III** (developed using 1988-1989 data) and APACHE **IV** (developed using 2002-2003 data) and other prognostic systems **over predict mortality** for **contemporary** ICU admissions. The over prediction of mortality is even **greater** for patients with **specific diagnoses** that had the **largest** mortality **reductions** between 1988-1989 and 2010-2012. The magnitude of these disease-specific changes may explain why recalibrating models that do not include specific diagnostic information often fails to improve calibration when tested in new populations [31-33].

Our study is subject to several limitations. First, our data is not necessarily representative of all U.S. ICUs because it was obtained only from units with an APACHE system. However, there was great diversity in hospital size, teaching status, region, as well as ICU type. Second, our data is subject to a selection bias because data from 1988-1989 and 1993-1996 were population based, whereas data from 2001 onwards was from a self-selected sample of ICUs. In addition, the data for this study was not serially collected from the same hospitals over the 24 year interval,

and we cannot exclude that changes in outcome were related to ICU based differences in quality of care. Third, we lacked individual patient data for 1988-1989 and 1993-1996 admissions. For specific diagnostic groups, this hampered our ability to evaluate the impact of changes in severity of illness and other confounders on mortality. Finally, we did not have information about mortality after hospital discharge. For this reason we were unable to accurately evaluate the impact of changes in discharge destination on hospital mortality.

Conclusions

Hospital mortality for patients admitted to intensive care units has decreased significantly over the past quarter century despite an increase in patient severity of illness. Decreases in mortality are diagnosis-specific and might be in part attributable to improvements in quality of care, but changing patterns in discharge destination and other confounders may also be responsible.

Key messages

Hospital mortality for patients admitted to U.S. intensive care units had a relative decrease of **35%** between 1988 and 2012.

Reductions in hospital mortality were greater and more varied for patients within specific diagnostic groups.

Changes in hospital mortality over time **explain why prognostic scoring systems over predict mortality** when applied to more contemporary patient data.

Long-term outcome data are needed to assess the impact of discharge to post-acute care facilities on hospital mortality rates.

Abbreviations

APACHE, Acute Physiology and Chronic Health Evaluation; GI, gastrointestinal; ICU, intensive care unit; MPM, Mortality Probability Model; PAC, post-acute care; SAPS, Simplified Acute Physiology Score; US, United States.

Competing interests

JEZ is a paid consultant and receives research support from Cerner Corporation.

AAK is a full-time employee and stockholder in Cerner Corporation. WAK declares that he has no competing interests. Cerner Corporation, Kansas City, MO, supported the study. Cerner markets the APACHE Outcomes Clinical Information System, and owns databases used for this study.

Author's Contributions

All authors took part in the planning, design, interpretation and drafting of the study. AAK acquired the data and performed the analyses. All authors have read and approved the manuscript for publication.

References

1. Andrews RM, Russo CA, Pancholi M. **Trends in hospital risk-adjusted mortality for select diagnoses and procedures, 1994-2004.** In *HCUP Statistical Brief #38*. Agency for Healthcare Research and Quality; Rockville, MD. October 2007.
2. Hines A, Stranges E, Andrews R. **Trends in hospital risk-adjusted mortality for select diagnoses by patient subgroups, 2000-2007.** In *HCUP Statistical Brief #98*. Agency for Healthcare Research and Quality, Rockville, MD. October 2010.
3. Bueno H, Ross JS, Wang Y, Chen J, Vidan MT, Normand SLT, Curtis JP, Drye EE, Lichtman JH, Keenan PS, Kosiborod M, Krumholz HM. **Trends in length of stay and short-term outcomes among Medicare patients hospitalized for heart failure: 1993-2008.** *JAMA* 2010, **303**:2141-2147.
4. Ruhnke GW, Coca-Perraillon M, Kitch BT, Cutler DM. **Marked reduction in 30-day mortality among elderly patients with community-acquired pneumonia.** *Am J Med* 2011, **124**:171-178.
5. Lovelock CE, Rinkel GJE, Rothwell PM. **Time trends in outcome of subarachnoid hemorrhage.** *Neurology* 2010, **74**:1494-1501.
6. Finks JF, Osborne NH, Birkmeyer JD. **Trends in hospital volume and operative mortality for high-risk surgery.** *N Engl J Med* 2011, **364**:2128-2837.

7. Martin GS, Mannino DM, Eaton S, Moss M. **The epidemiology of sepsis in the United States from 1979 through 2000.** *N Engl J Med* 2003, **348**:1546-1554.
8. Erickson SE, Martin GS, Davis JL, Matthay MA, Eisner MD. **Recent trends in acute lung injury mortality: 1996-2005.** *Crit Care Med* 2009, **37**:1574-1579.
9. Stevens LM, Madsen JC, Isselbacher EM, Khairy P, MacGillivray TE, Hilgenberg AD, Agnihotri AK. **Surgical management and long-term outcomes for acute ascending aortic dissection.** *J Thorac Cardiovasc Surg* 2009, **138**:1349-1357.
10. Moran JL, Bristow P, Solomon PJ, George C, Hart GK. **Mortality and length-of-stay outcomes, 1993-2003, in the binational Australian and New Zealand intensive care adult patient database.** *Crit Care Med* 2008, **36**:46-61.
11. Hutchings A, Durand MA, Grieve R, Harrison D, Rowan K, Green J, Carins J, Black N. **Evaluation of modernization of adult critical care services in England: time series and cost effectiveness analysis.** *BMJ* 2009, **339**:b4353.
12. Kramer AA. **Predictive mortality models are not like fine wine.** *Critical Care* 2005, **9**:636-637
13. Moreno RP, Metnitz PGH, Almeida E, Jordan B, Bauer P, Campos RA, Iapichino G, Edbrooke D, Capuzzo M, Le Gall JR. **SAPS 3 – from evaluation of the patient to evaluation of the intensive care unit. Part 2: Development of a**

- prognostic model for hospital mortality at ICU admission.** *Intensive Care Med* 2005, **31**:1345-1355.
14. Higgins TL, Teres D, Copes WS, Nathanson BH, Stark M, Kramer AA.
Assessing contemporary intensive care unit outcome: an updated Mortality Probability Admission Model (MPMo-III). *Crit Care Med* 2007, **35**:827-835.
15. Zimmerman JE, Kramer AA, McNair DS, Malila FM. Acute Physiology and Chronic Health Evaluation (**APACHE**) **IV**: **Hospital mortality assessment for today's critically ill patients.** *Crit Care Med* **2006**, **34**:1297-1310.
16. Wunsch H, Guerra C, Barnato AE, **Angus DC, Li G**, Linde-Zwirble WT. **Three-year outcomes for Medicare beneficiaries who survive intensive care.** *JAMA* 2010, **303**:849-856.
17. Vasilevskis EE, Kuzniewicz MW, Dean ML, Clay T, Vittinghoff E, Rennie DJ, Dudley RA. **Relationship between discharge practices and intensive care unit in-hospital mortality performance: evidence of a discharge bias.** *Med Care* 2009, **47**:803-812.
18. Hall WB, Willis LE Medvedev S, Carson SS. **The implications of long-term acute care hospital transfer practices for measures of in-hospital mortality and length of stay.** *Am J Respir Crit Care Med* 2012, **185**:53-57.
19. Kelly KB, Koeppel ML, Como JJ, Carter JW, McCoy AM, Claridge JA. **Continued rationale of why **hospital mortality** is **not** an appropriate **measure** of trauma **outcomes**.** *Am J Surg* 2012, **203**:366-369.

20. Kahn JM, Kramer AK, Rubenfeld GD. **Transferring critically ill patients out of hospital improves the standardized mortality ratio.** *Chest* 2007, **131**:68-75.
21. Knaus WA, Wagner DP, Draper EA, Zimmerman JE, Bergner M, Bastos PG, Sirio CA, Murphy DJ, Lotring T, Damiano A, Harrell FE. **The APACHE III prognostic system: risk prediction of hospital mortality for critically ill hospitalized adults.** *Chest* 1991, **100**:1619-1636.
22. Zimmerman JE, Wagner DP, Draper EA, Wright L, Alzola C, Knaus WA. **Evaluation of Acute Physiology and Chronic Health Evaluation III predictions of hospital mortality in an independent database.** *Crit Care Med* 1998, **26**:1317-1326.
23. Kramer AA, Higgins TL, Zimmerman JE. **Intensive care unit readmissions in U.S. hospitals: patient characteristics, risk factors, and outcomes.** *Crit Care Med* 2012, **40**:3-10.
24. Kramer AA, Zimmerman JE. **Institutional variations in frequency of discharge of elderly intensive care survivors to post-acute care facilities.** *Crit Care Med* 2010, **38**:2319-2328.
25. Buntin MB. **Access to postacute rehabilitation.** *Arch Phys Med Rehabil* 2007, **88**:1488-1493.
26. Ford ES, Mannino DM, Zhao G, Li C, Croft JB. **Changes in mortality among US adults with COPD in two national cohorts recruited from 1971-1975 and 1988-1994.** *Chest* 2012, **141**:101-110.

27. Kumar G, Kumar N, Taneja A, Kaleekal T, Tarima S, McGinley E, Jimenez E, Mohan A, Kahn RA, Whittle J, Jacobs E, Nanchal R. **Nationwide trends of severe sepsis in the 21st century (2000-2007).** *Chest* 2011, **140**:1223-1231.
28. Qureshi AI, Suri MF, Nasar A, Kirmani JF, Divani AA, He W, Hopkins LN. **Trends in hospitalization and mortality for subarachnoid hemorrhage and unruptured aneurysms in the United States.** *Neurosurgery* 2005, **57**:1-8.
29. Chan L, Koepsell TD, Devo RA, Esselman PC, Haselkorn JK, Lowery JK, Stolor WC. **The effect of Medicare's payment system for rehabilitation hospitals on length of stay, charges, and total payments.** *N Engl J Med* 1997, **337**:978-985.
30. Chassin MR, Loeb JM, Schmaltz SP, Wachter RM. **Accountability measures – using measurement to promote quality improvement.** *N Engl J Med* 2010, **363**:683-688.
31. Keegan MT, Gajic O, Afessa B. **Severity of illness scoring systems in the intensive care unit.** *Crit Care Med* 2011, **39**:163-169.
32. Breslow MJ, Badawi O. **Severity scoring in the critically ill: Part 1 – Interpretation and accuracy of outcome prediction scoring systems.** *Chest* 2012, **141**:245-252.
33. Kuzniewicz MW, Vasilevskis EE, Lane R, Dean ML, Trivedi NG, Rennie DJ, Clay T, Kotler PL, Dudley RA. **Variation in ICU risk-adjusted mortality: impact**

of methods of assessment and potential cofounders. *Chest*

2008,133:1319-1327

Figure legends

Figure 1. Hospital mortality, age, and acute physiology score (APS) for 482,601 ICU admissions from 1988-1989 to 2010-2012.

Figure 2. Diagnostic groups with a $\geq 60\%$ reduction in mortality from 1988-1989 to 2010-2012. Definition of abbreviations: SAORTDIS = surgery for aortic dissection; SSAH = surgery for subarachnoid hemorrhage; SEIZ = seizures; COPD = chronic obstructive pulmonary disease.

Figure 3. Diagnostic groups with a 51% - 59% reduction in mortality from 1988-1989 to 2010-2012. Definition of abbreviations: SICH = surgery for intracerebral hemorrhage; uriSEPSIS = sepsis, urinary tract; AMI = acute myocardial infarction; SGICA = surgery for gastrointestinal malignancy; CHF = congestive heart failure; SEPSIS = sepsis, non-urinary tract.

Figure 4. Diagnostic groups with a 41% - 50% reduction in mortality from 1988-1989 to 2010-2012. Definition of abbreviations: ICHMED = Intracerebral hemorrhage; STROKE = stroke/cerebral vascular accident; GIBLEED = gastrointestinal bleeding (upper); BACVPNEU = viral pneumonia; SHEADTR =

surgery for multiple trauma, including the head; GIBLVAR = gastrointestinal bleeding, varices.

Figure 5. Diagnostic groups with a 10% to 40% reduction in mortality from 1988-1989 to 2010-2012. Definition of abbreviations: SGIOBS = surgery for gastrointestinal obstruction; ARDS = acute respiratory distress syndrome; SGIBLEE = surgery for gastrointestinal bleeding; CARDARR = cardiac arrest; HEADTR = head trauma, with chest, abdomen, pelvis, or spine injury.

Figure 6. Hospital mortality and discharge destination for 422,294 ICU admissions from 2001-2012. Other hospital includes another acute care hospital or long term acute care facility.

Table1. Number of hospitals, ICUs, and admissions during each time period.

Time Interval	# Hospitals	# ICUS	# Admissions
1988 - 1989	40	42	17,440
1993 - 1996	161	285	37,668
2001 - 2003	71	166	110,534
2004 - 2006	57	136	101,031
2007 - 2009	98	199	113,743
2010 - 2012	90	180	102,225
<i>Total</i>			<i>482,641</i>

Table 2. Characteristics of hospitals and ICUs in each time period

	1988-1989	1993-1996	2001-2003	2004-2006	2007-2009	2010-2012
# of hospitals	40	161	71	57	98	90
Region						
Northeast	17.5%	19.9%	4.2%	0.0%	16.0%	21.1%
Southeast	32.5%	29.2%	31.0%	31.6%	27.0%	21.1%
Midwest	30.0%	23.0%	35.2%	35.1%	33.0%	41.1%
West	20.0%	28.0%	29.6%	33.3%	24.0%	16.7%
Teaching Status						
COTH	52.5%	40.4%	16.9%	17.5%	34.0%	54.4%
Teach, non-COTH	10.0%	19.9%	36.6%	43.9%	37.0%	24.4%
Non-teach	37.5%	39.7%	46.5%	38.6%	29.0%	21.1%
Bedsizes	474	464	453	501	497	473
# of intensive care units	42	285	166	136	199	180
ICU Type						
Mixed Medical-Surgical	71.0%	33.3%	36.5%	30.9%	31.5%	36.7%
Medical	10.0%	19.6%	12.6%	15.4%	19.8%	17.4%
Surgical	16.0%	22.1%	14.4%	17.7%	21.3%	22.9%
Other	3.0%	25.0%	36.5%	36.0%	27.4%	22.9%

COTH = Council of Teaching hospitals.

Other = Cardiothoracic, Coronary, Neurological, and trauma units

Table 3. Characteristics of ICU patients admitted during each time period.

Cohort	1988-1989	1993-1996	2001-2003	2004-2006	2007-2009	2010-2012
# Admissions	17,440	37,668	110,534	101,031	113,743	102,225
Age (mean)	59.3	59.6	61.9	61.4	61.3	61.4
APS (mean)	39.3	34.2	39.0	39.3	42.0	42.2
≥ 1 chronic health conditions	12.0%	13.3%	10.0%	14.9%	14.8%	14.0%
% on ventilator, day 1	33.9%	Not Available	39.6%	37.9%	39.7%	36.0%
Location before admission						
Post-operative	42.3%	30.3%	35.8%	34.7%	26.5%	23.1%
Emergency Room	35.5%	39.0%	33.3%	32.9%	37.7%	37.8%
Floor/Dir Adm/Other	16.4%	16.5%	12.9%	12.5%	14.6%	13.7%
Other hospital	2.4%	7.7%	8.8%	8.1%	12.3%	15.7%
ICU transfer	3.3%	3.7%	5.7%	7.1%	3.5%	2.0%
Step down unit	N/A	2.9%	3.6%	4.7%	5.4%	7.7%
% Emergency surgery	9.0%	6.4%	4.5%	5.5%	5.4%	4.9%
% Race = white	80.3%	78.0%	73.9%	75.8%	78.2%	79.2%
ICU LOS (mean days)	4.64	4.30	3.43	3.86	3.96	3.58
Hospital LOS (mean days)	15.6	11.6	10.0	10.9	10.8	9.7
Hospital Mortality %	17.3%	12.4%	12.6%	11.9%	12.1%	11.3%

APS = acute physiology score***N/A = not available***

Table 4. Diagnoses with a consistent definition and $\geq 10\%$ mortality rate in 1988 - 1989

NON-OPERATIVE DIAGNOSES (n = 14)	POSTOPERATIVE DIAGNOSES (n = 8)
Acute respiratory distress syndrome	Surgery for GI bleeding
Chronic obstructive pulmonary disease	Surgery for GI obstruction
Pneumonia (viral)	Surgery for GI perforation
Cardiac arrest	Surgery for aortic dissection
Congestive heart failure	Surgery for intracranial hemorrhage
Sepsis, non-urinary tract	Surgery for subarachnoid hemorrhage
Sepsis, urinary tract	Surgery for multiple trauma, including the head
GI bleeding (varices)	Surgery for GI cancer
GI Bleeding (upper, non-variceal)	
Intracerebral hemorrhage	
Stroke/Cerebrovascular accident	
Head trauma with either chest, pelvis, or spine injury	
Seizures	
Acute myocardial infarction	

GI = gastrointestinal

Additional files

Additional file 1

Title: Online Supplement

Description: Seven additional figures. One figure shows mortality over time stratified by whether or not a patient was ventilated. The remaining six figures show discharge destination over time for selected diagnoses.

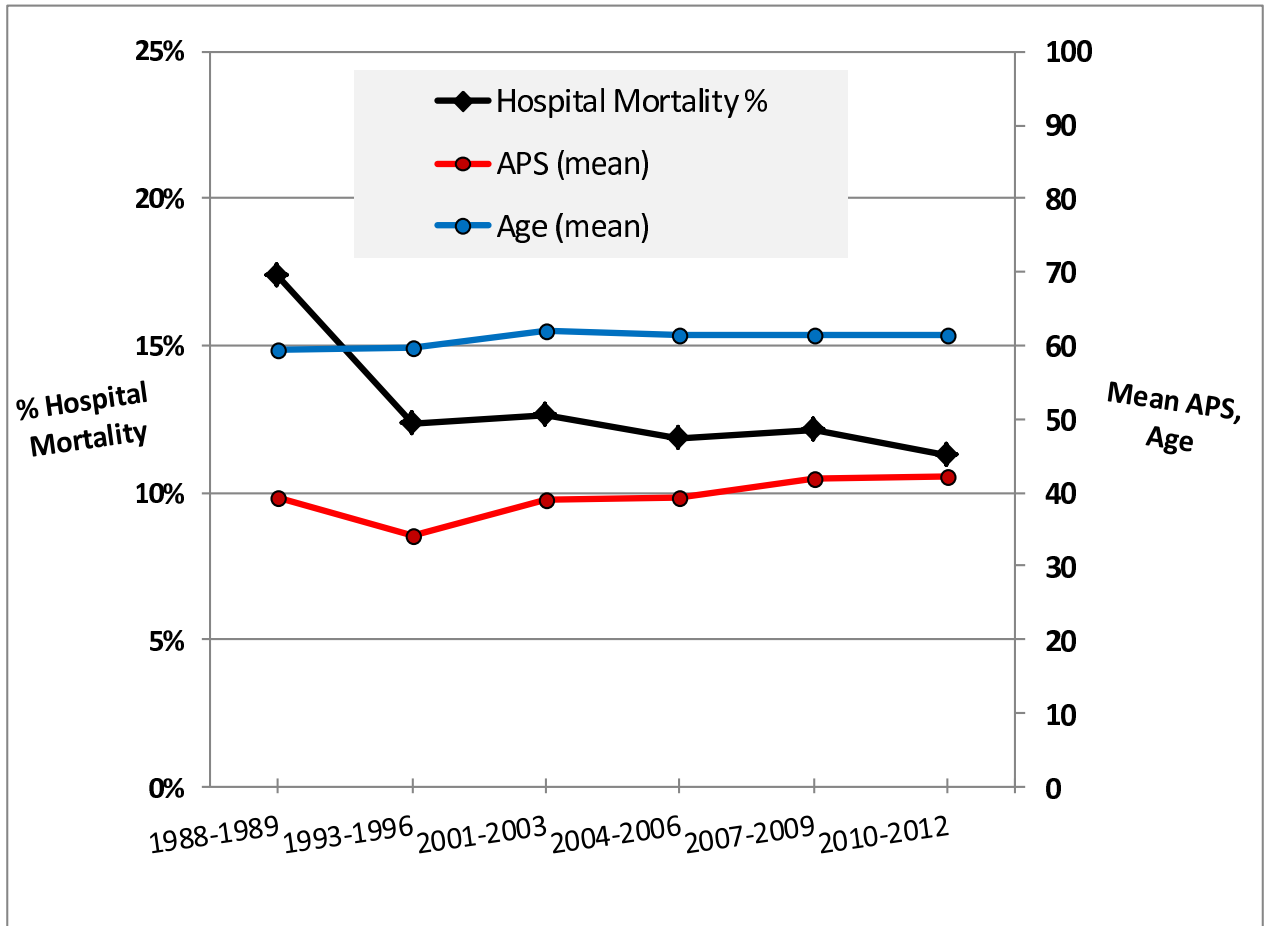


Figure 1

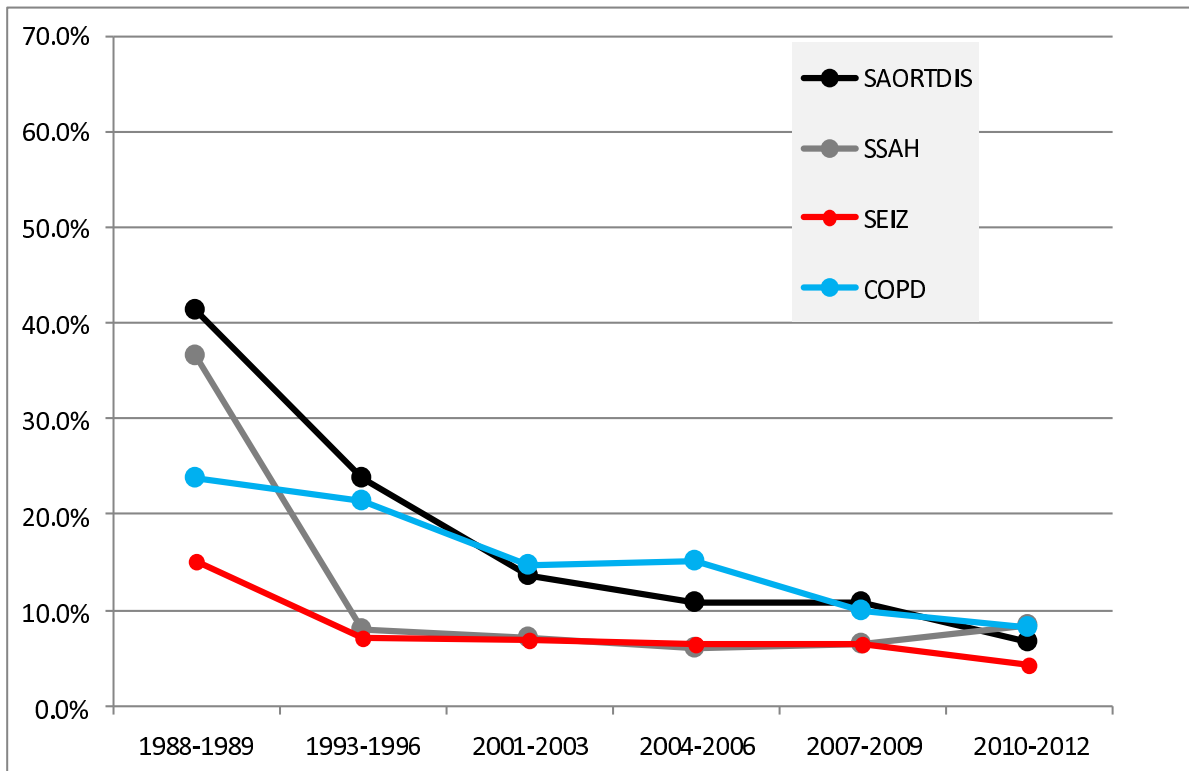


Figure 2

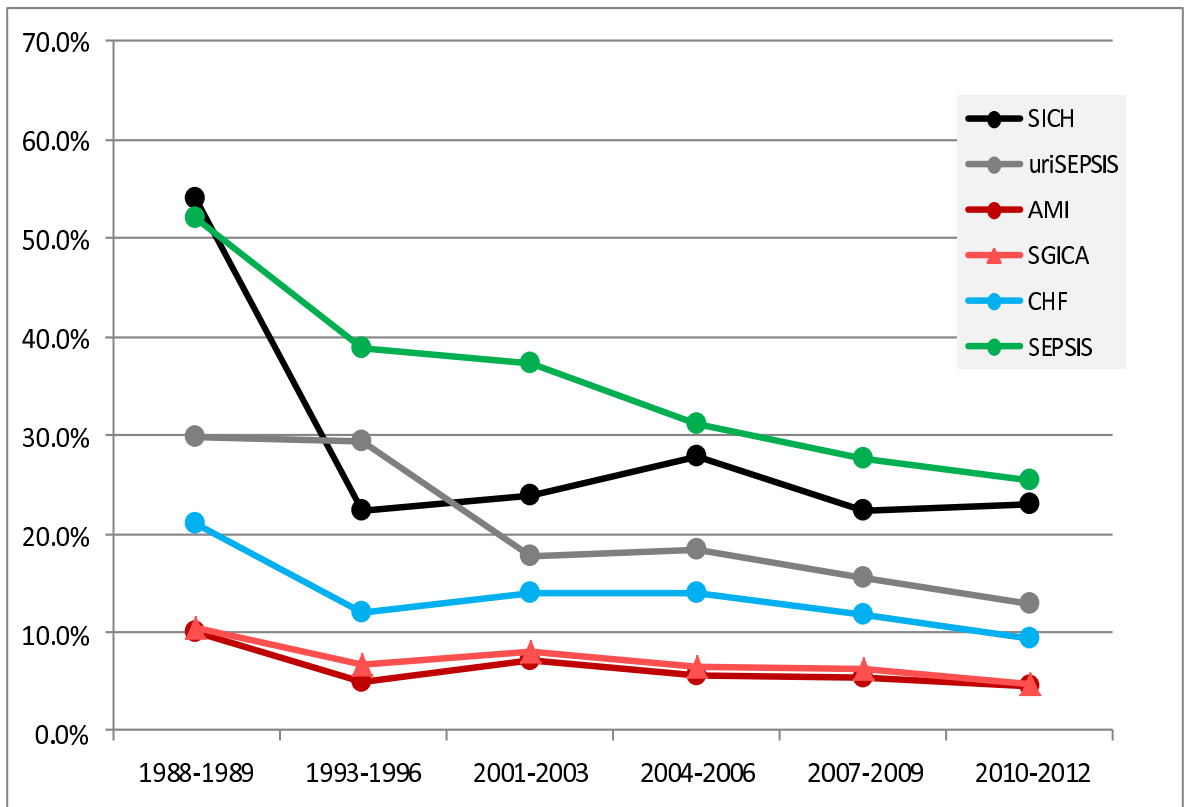


Figure 3

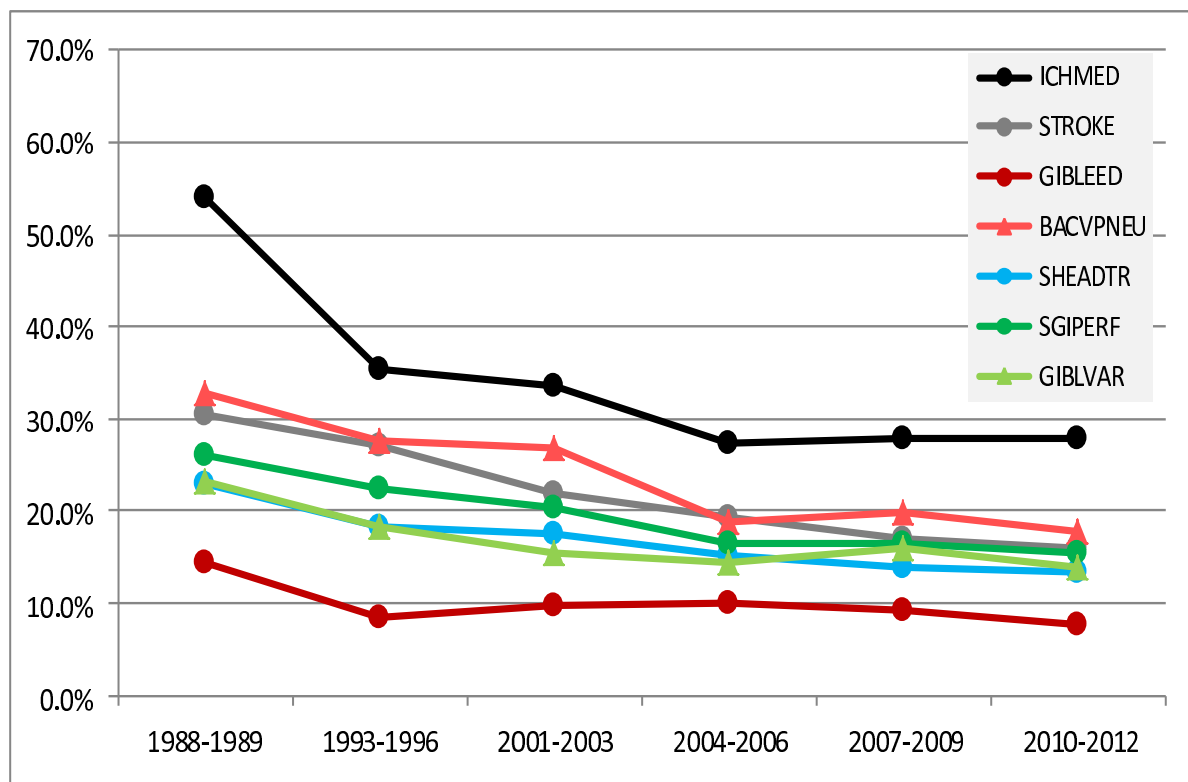


Figure 4

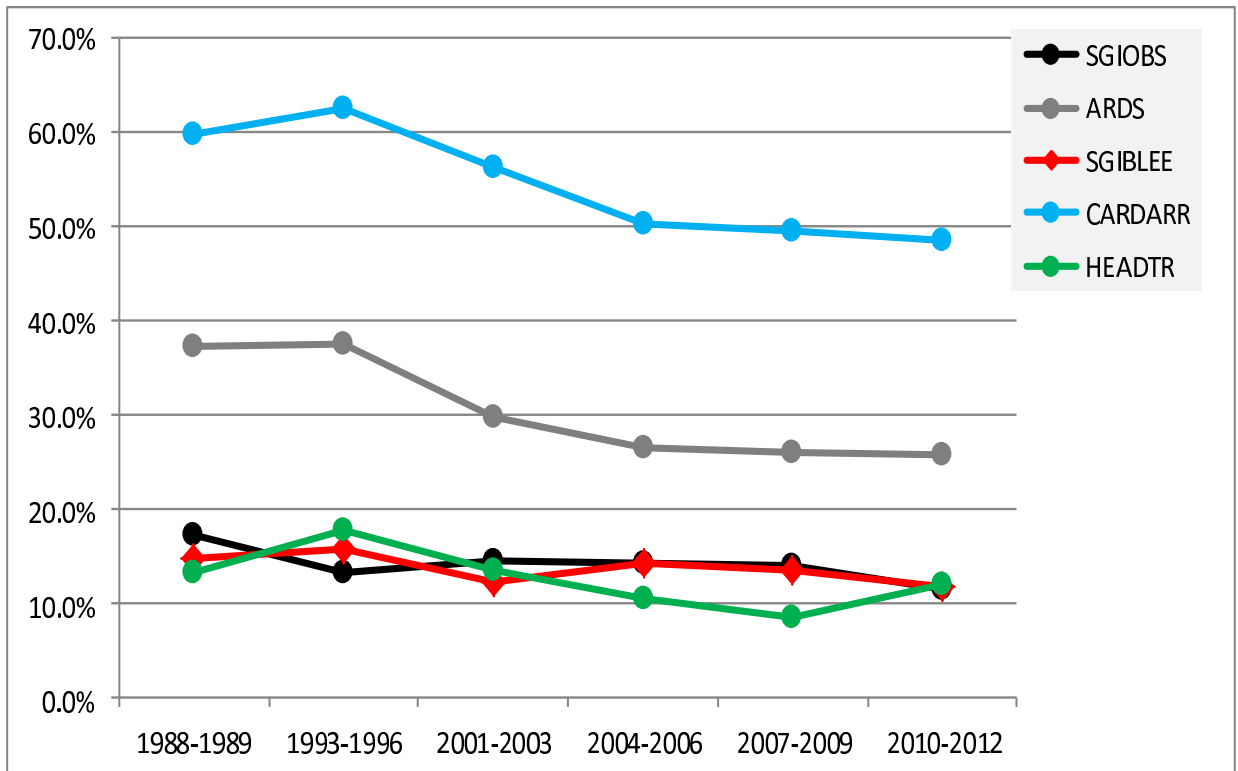


Figure 5

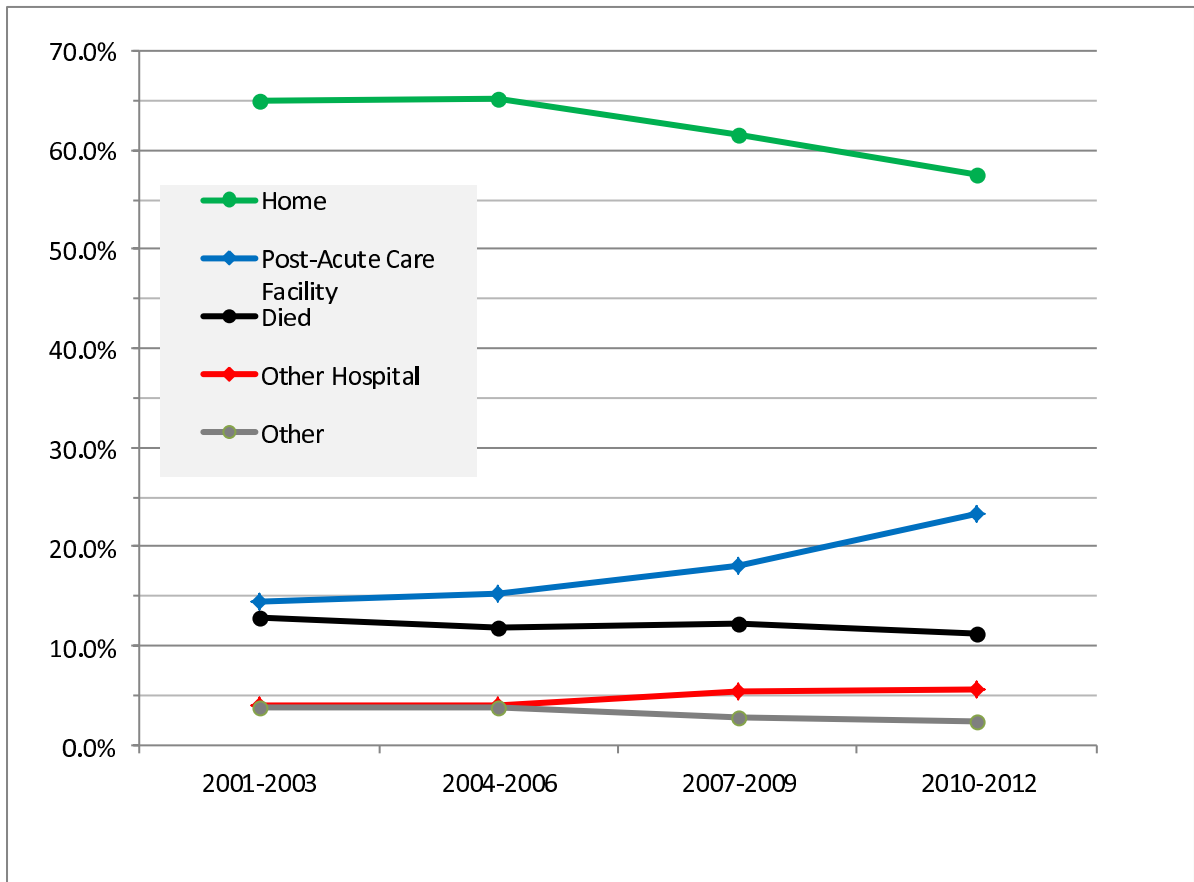


Figure 6

Additional files provided with this submission:

Additional file 1: Online Supplement.pdf, 308K

<http://ccforum.com/imedia/5900090269764295/supp1.pdf>