

Title: New Developments in Hepatorenal Syndrome

Authors: Ayse L. Mindikoglu, M.D., M.P.H.^{1, 2}, Stephen C. Pappas, M.D., J.D., FCLM, FAASLD²

Institutions:

1. Baylor College of Medicine, Michael E. DeBakey Department of Surgery, Division of Abdominal Transplantation
2. Baylor College of Medicine, Department of Medicine, Section of Gastroenterology and Hepatology

Correspondence:

Ayse L. Mindikoglu, M.D., M.P.H.

Associate Professor of Surgery and Medicine

Baylor College of Medicine

Michael E. DeBakey Department of Surgery

Division of Abdominal Transplantation

6620 Main Street- Suite 1450

Houston, TX 77030

Phone: 832-355-1400; Fax: 713-610-2479

E-mail: Ayse.Mindikoglu@bcm.edu

Disclosures:

Ayse L. Mindikoglu, M.D., M.P.H. A provisional patent application (serial no: 62/442,479) is filed with the US patent office on 01/05/2017 (Metabolomic Markers to Predict Mortality in Patients with Cirrhosis).

Stephen C. Pappas, M.D. J.D., FCLM, FAASLD is a consultant for Orphan Therapeutics LLC and Ikaria Inc., a Mallinckrodt Company.

Acknowledgments:

The authors thank Scott C Holmes, C.M.I., a member of the Michael E. DeBakey Department of Surgery Research Core at Baylor College of Medicine, for his assistance during the preparation of Figures 1 and 2.

Author Contributions:

Ayşe L. Mindikoglu, M.D., M.P.H. conceptualized, designed and drafted the manuscript, tables and figures and performed critical review of the manuscript for important intellectual content.

Stephen C. Pappas, M.D. J.D., FCLM, FAASLD conceptualized, designed and critically reviewed the manuscript for important intellectual content.

ABSTRACT

Hepatorenal Syndrome (HRS) continues to be one of the major complications of decompensated cirrhosis leading to death in the absence of liver transplantation. Challenges in precisely evaluating renal function in the patient with cirrhosis remain due to the limitations of serum creatinine (Cr) alone in estimating glomerular filtration rate (GFR); current GFR estimating models appear to underestimate renal function. Newer models incorporating renal biomarkers, such as the Cr-Cystatin C GFR Equation for Cirrhosis appear to more accurately estimate true GFR. A major change in the diagnostic criteria for HRS based on dynamic serial changes in serum Cr which regard HRS type 1 as a special form of acute kidney injury (AKI) promises the possibility of earlier identification of renal dysfunction in patients with cirrhosis. The diagnostic criteria of HRS still include the exclusion of other causes of kidney injury. Renal biomarkers have been disappointing in assisting with the differentiation of HRS from pre-renal azotemia and other kidney disorders. Serum metabolomic profiling may be a more powerful tool to assess renal dysfunction although the practical clinical significance of this remains unclear. As a result of the difficulties of assessing renal function in cirrhosis and the varying HRS diagnostic criteria and the rigor with which they are applied, the precise incidence and prevalence of HRS is unknown but it is likely that HRS occurs more commonly than expected. The pathophysiology of HRS is firmly rooted in the setting of progressive reduction in renal blood flow (RBF) as a result of portal hypertension and splanchnic vasodilation. Progressive, marked renal cortical ischemia in patients with cirrhosis parallels the evolution of diuretic-sensitive ascites to diuretic-refractory ascites and HRS, a recognized continuum of renal dysfunction in cirrhosis. Alterations in nitrous oxide (NO) production, both increased and decreased may play a major role in the pathophysiology of this evolution. The inflammatory cascade triggered by bacterial translocation

and endotoxemia, increasingly recognized as important in the manifestations of acute on chronic liver failure, may also play a significant role in the pathophysiology of HRS. The mainstay of treatment remains vasopressor therapy with albumin in an attempt to reverse splanchnic vasodilation and improve RBF. Several meta-analyses confirm the value of vasopressors, chiefly terlipressin and norepinephrine, in improving renal function and reversing HRS type 1. Other interventions such as renal replacement therapy, transjugular intrahepatic porto-systemic shunt (TIPS), and artificial liver support systems have a very limited role to improve outcomes in HRS. Liver transplantation remains the definitive treatment for HRS. The frequency of simultaneous liver-kidney transplantation (SLKT) has increased dramatically in the Model for End-Stage Liver Disease (MELD) era, with changes in organ allocation policies. This has resulted in a more urgent need to accurately predict native kidney recovery from HRS after liver transplantation alone, to avoid unnecessary SLKT.

Keywords: Hepatorenal Syndrome, cirrhosis, terlipressin, meta-analysis, cystatin C

Hepatorenal Syndrome (HRS) is characterized as renal dysfunction secondary to reduction in renal blood flow (RBF) occurring in the setting of underlying cirrhosis and portal hypertension.¹ It is classified as either rapidly developing acute kidney injury (AKI), HRS type 1 or slowly progressive chronic kidney disease (CKD), HRS type 2.² Both types of HRS are associated with a decline in RBF and glomerular filtration rate (GFR). HRS is a frequently fatal complication of cirrhosis.³ The diagnosis conveys a poor prognosis; median survival for HRS Type 1 and 2 is approximately 1 and 6.7 months, respectively.³ Challenges for the study of HRS include establishing when renal dysfunction in patients with cirrhosis occurs, largely related to the limitations of serum creatinine (Cr), evolving criteria for the diagnosis of HRS, the uncertain value of renal biomarkers, and the limited availability of pharmacologic and other therapies to address the fundamental underlying pathophysiology. In this review, we summarize new concepts and developments in the diagnosis, epidemiology, pathophysiology, and treatment of HRS, chiefly focusing on HRS type 1.

Diagnosis of Renal Dysfunction in Patients with Cirrhosis

It is well-established that serum Cr is not an accurate marker of renal dysfunction in cirrhosis.⁴⁻⁸ Multiple factors contribute to lower serum Cr concentrations in cirrhosis, reducing the sensitivity of serum Cr for the detection of renal dysfunction and resulting in an overestimation of renal function, misclassification of kidney disease stage and delays in management and treatment of kidney disease in patients with cirrhosis.⁴⁻⁸ The production of creatine, the precursor of serum Cr is impaired in hepatic dysfunction.^{6, 7} Patients with decompensated cirrhosis have reduced muscle mass and increased tubular secretion of Cr.⁴⁻⁸ Collectively, all these factors reduce serum Cr concentration making it an insufficiently accurate marker of renal function in cirrhosis.⁴⁻⁸ Assessing renal function by measuring GFR (e.g. inulin

clearance, iothalamate clearance) is the most reliable and accurate method, but it is labor intensive, expensive and time-consuming. Directly measuring Cr clearance is an alternative method to measuring GFR. However, the Cr clearance method is time-intensive, prone to logistical errors, and impractical in critically ill patients with end-stage liver disease and low or no urine output. In subjects with cirrhosis, Cr clearance has been shown to have poor accuracy in predicting measured GFR.⁹ Hyperbilirubinemia and hemolysis in patients with cirrhosis may produce spuriously low levels of Cr.¹⁰ Serum Cr varies with sex and age, distinct from changes in GFR.⁸ Even after controlling for age, race, weight, height and measured GFR, female gender was shown to be an independent predictor of serum Cr in patients with cirrhosis.¹¹

Table 1 shows original development¹²⁻²² and validation studies^{9, 15, 23-26} of conventional Cr clearance and GFR-estimating and new GFR-estimating equations in patients with cirrhosis. Cr-based GFR-estimating equations have major limitations in patients with cirrhosis.^{9, 25, 26} Additionally, the majority of Cr-based GFR- and Cr clearance-estimating equations used in clinical practice were derived either from patients with CKD or patients without cirrhosis.^{12, 17-20} A Cr-based GFR-estimating equation derived from 469 patients with cirrhosis, validated both internally and externally in 174 and 82 patients with cirrhosis, respectively has recently been described.¹⁵ Although this Cr-based GFR model suggested improved performance in predicting measured GFR compared to the Chronic Kidney Disease Epidemiology Collaboration (CKD-EPI) Cr and Modification of Diet In Renal Disease (MDRD) equations¹⁵, prospective, independent assessments of differences in accuracy between GFR estimates by the new equation, MDRD and CKD-EPI Cr equations are not yet available. Blood urea and degree of ascites (moderate vs. severe) are two of the parameters used in this new model.¹⁵ Elevated blood urea

levels in the setting of gastrointestinal bleeding and the subjective nature of assessing the degree of ascites among clinicians may limit the value of this model and further validation is required.¹⁵

Serum Cr is not only used in determining renal function and mortality in patients with cirrhosis on the liver transplant waiting list, but also making decisions on whether to proceed with liver transplant alone (LTA) or simultaneous liver-kidney transplantation (SLKT) for patients with severe renal dysfunction in the setting of HRS. According to newly proposed guidelines for SLKT, GFR is estimated using the MDRD-6 equation, a Cr-based formula.²⁷ However, the MDRD-6 formula was shown to underestimate measured GFR when the measured GFR was $> 30 \text{ ml/min/1.73m}^2$ in patients with cirrhosis, and therefore can potentially lead to listing a patient for an unnecessary SLKT.²⁵ Conversely, the overestimation of measured GFR can result in increased mortality after liver transplantation due to severe renal dysfunction underscoring the need for a practical, accurate assessment of GFR.^{25,28}

The recent development of GFR equations supplementing serum Cr with renal biomarker, cystatin C measurements appear promising. In contrast to serum Cr, cystatin C is independent of hepatic function^{5,29}, “gender-neutral”¹¹ and sensitive to GFR reductions in the range where GFR equations using serum Cr alone may not detect GFR reductions.²⁹ Studies showed that Cr-cystatin C combined GFR-equations were more accurate compared to Cr-based GFR equations in estimating measured GFR in patients with cirrhosis.^{9,21,23} The advantage of using serum Cr and cystatin C in combination is that cystatin C is a Cr-blind range marker and increases the performance of the GFR equation.²¹ The new Cr-cystatin C GFR equation for Cirrhosis estimates GFR with greater accuracy than the CKD-EPI cystatin C (2012)¹⁴ and Cr-cystatin C (2012)¹⁴ equations in patients with cirrhosis and diuretic-refractory ascites.²¹ Cr-Cystatin C Equation for Cirrhosis has been recently validated in an independent cohort of 129 patients with

decompensated cirrhosis in Europe.²³ Compared to CKD-EPI cystatin C (2012)¹⁴ and Cr-cystatin C (2012)¹⁴ equations, the Cr-Cystatin C GFR Equation for Cirrhosis²¹ had significantly higher accuracy and showed the best performance to discriminate patients with cirrhosis who had GFR < 60ml/min with an AUC of 0.91 compared to MDRD-4¹⁷⁻¹⁹, CKD-EPI Cr (2009)²⁰ and GFR equation developed by Cholongitas *et al.*²³ These developments may become relevant to establishing the diagnosis of HRS more precisely and selecting the most appropriate therapy and its timing, be it vasopressors, LTA or SLKT.

New Diagnosis of HRS in Patients with Cirrhosis

One of the most important developments in HRS is the move away from a diagnosis based on a single level of serum Cr to one based on dynamic serial changes in serum Cr such as the recently revised recommendations of International Ascites Club (IAC) for hepatorenal disorders in cirrhosis.³⁰ This change has been stimulated by a perceived need to more precisely establish an early diagnosis of HRS allowing the start of earlier therapy. The key difference between the prior criteria³¹ and the newly proposed classification system to diagnose HRS³⁰ is that the diagnosis of HRS is not based on an increase in serum Cr from a single serum Cr value to a fixed value of serum Cr (i.e. 2.5 mg/dL for HRS type 1³¹) but rather on an amount of increase in serum Cr from baseline serum Cr value comports with the Acute Kidney Injury Network (AKIN)³², Kidney Disease Improving Outcomes (KDIGO) clinical practice guidelines for AKI³³, Acute Dialysis Quality Initiative (ADQI) and International Ascites Club (IAC)² classification systems and revised recommendations of IAC.³⁰ In this new classification system, the diagnosis of AKI precedes the diagnosis of HRS (Figure 1A).^{30, 34, 35} Once AKI is diagnosed, the stage of AKI should be identified (Figure 1B) as progression to subsequent AKI stages has higher mortality in patients with cirrhosis.^{30, 34-36} Since the diagnosis of HRS is one of exclusion,

adjudication of the **etiology** of **AKI** should begin by **discontinuation** of **diuretics**, **vasodilators** and **nephrotoxic** drugs, treatment of all etiologies that may be culprit of volume depletion and administration of intravenous **albumin** (**1 g/kg/day** for **2 days**; maximum **100 g** a day) (**Figure 1C**).^{30, 34, 35} Patients **responding to volume replacement** therapy can be considered to have **pre-renal** azotemia.^{30, 34, 35} Patients who do **not responding** to volume replacement therapy should be evaluated for etiologies including **HRS**, **intra-renal** (e.g. acute tubular necrosis [**ATN**], **glomerulonephritis**, **interstitial** nephritis) and **post-renal** (e.g. urinary **obstruction**) AKI.^{30, 34, 35} Presence of **granular casts** in urine sediment and **urine osmolality equal** to **plasma osmolality** are **suggestive** findings of **ATN**.³⁷ **Proteinuria** and microhematuria should warrant further investigation for an **intra-renal cause** of AKI.³⁰ Renal **ultrasound** should be obtained to assess structural changes in the kidneys and rule out urinary obstruction. Increased renal resistive indices (RIs) in hilar, medullary and cortical areas on Duplex Doppler Ultrasonography and disappearance of gap between interlobar and cortical RIs can be an indicator of reduction in RBF and the possibility of HRS type 1 or HRS type 2 depending on how quickly renal dysfunction develops (**Figure 2**).^{1, 38-41} HRS can be superimposed on pre-renal azotemia or CKD.^{2, 42} Similarly, HRS can progress to ATN if renal vasoconstriction is prolonged or severe.⁴² Two or more AKI types can **simultaneously** occur in a patient with cirrhosis making the differentiation **challenging**. These possibilities should be taken into account when evaluating patients with HRS. Although several new blood and urinary AKI markers have been recently identified, no specific biomarker(s) is available to diagnose HRS superimposed on other AKI etiologies (e.g. pre-renal azotemia, ATN). It remains to be seen whether application of this new classification of HRS to treatment selection and earlier treatment will improve outcomes.

AKI and Renal **Biomarkers in Patients with Cirrhosis**

In recent years, several urinary AKI markers that played a role in trying to determine the etiology of AKI in patients with cirrhosis were reported. Fagundes *et al.*⁴³ reported that urinary neutrophil gelatinase-associated lipocalin (NGAL) levels were significantly elevated in patients with cirrhosis and ATN compared to those who had pre-renal azotemia and HRS. They reported that the cut-off value of 194 microgram/g Cr for urinary NGAL differentiated HRS from ATN with 91% and 82% sensitivity and specificity, respectively.⁴³ A major limitation of urinary NGAL is that it increases in patients with urinary tract infection and can give false positive results.⁴³ Belcher *et al.*⁴⁴ conducted a multicenter, prospective study in inpatients with cirrhosis and AKI and showed that a panel of urinary AKI biomarkers including NGAL, interleukin-18 (IL-18), kidney injury molecule-1 (KIM-1), liver-type fatty acid binding protein (L-FABP), and albumin differentiated patients with ATN from those with pre-renal azotemia or HRS. While of some value, the clinician is often faced with the more difficult challenge of differentiating between volume contraction and HRS.

Several renal blood biomarkers have been evaluated rigorously in patients with cirrhosis to estimate GFR, renal plasma flow and renal RIs.^{21, 39} The results of a study conducted in patients with cirrhosis showed that the mean serum concentrations of Cr, cystatin C, beta-trace protein, beta-2 microglobulin and dimethylarginines including asymmetric (ASMA) and symmetric dimethylarginine (SDMA) were significantly elevated in patients with diuretic-refractory ascites compared to patients with no ascites and diuretic-sensitive ascites.²¹ In this study, serum Cr and cystatin C significantly predicted measured GFR in patients with cirrhosis.²¹ GFR markers other than Cr and cystatin C including beta-trace protein, beta-2 microglobulin, and dimethylarginines were also tested in combinations.²¹ However, the additional proportion of

variance explained by adding these GFR markers to the Cr and cystatin C model was not statistically or clinically significant.²¹

A pilot study that evaluated altered renal hemodynamics in patients with cirrhosis showed that while cystatin C (R-Square=0.43, P=0.038) and beta-2 microglobulin (R-Square=0.46, P=0.030) performed better compared to serum Cr in estimating renal plasma flow (RPF) measured by para-aminohippurate clearance; beta-trace protein (R-Square=0.52, P=0.018) and SDMA (R-Square=0.44, P=0.038) performed better in estimating renal arcuate artery RI, a surrogate marker for cortical blood flow.³⁹

Serum **metabolomic** profiling may be a **powerful non-invasive tool** to discover renal biomarkers of renal dysfunction in patients with cirrhosis allowing early diagnosis of HRS, prediction of response to HRS treatment and native kidney recovery after liver transplantation, an important goal to avoid unnecessary SLKT.⁴⁵ A non-targeted global plasma metabolomic profiling in 103 patients with cirrhosis identified a **robust metabolomic signature** of hepatic and renal dysfunction consisting of **17 metabolites** that were significantly associated with **pyrimidine**, **nicotinate/nicotinamide**, **purine**, **inositol** phosphate, **DNA** repair, **glycolysis**, IL-2/STAT5 signaling and lipid metabolism pathways.⁴⁵ The 10 most inducible metabolites included 4-acetamidobutanoate, trans-aconitate, cytidine, myo-inositol, N4-acetylcystidine, N6-carbamoylthreonyladenosine, erythronate, N-acetylserine, pseudouridine, and N2,N2-dimethylguanosine.⁴⁵ The practical clinical **significance** of this metabolomics signature remains **unclear** but it appears further study in this area is warranted.

As suggested earlier, gender differences exist for serum Cr levels. **Cr production rate** was reported to be **10% lower in healthy females** compared to healthy males who had the same age

and weight.⁴⁶ The Model for End-Stage Liver Disease (MELD) score, which is used to identify patients with cirrhosis with the greatest need for liver transplant consists of four laboratory parameters, one of which is serum Cr.⁴⁷⁻⁴⁹ Lower serum Cr levels in female patients with cirrhosis result in lower MELD scores and in turn, reduced access to liver transplantation and significantly higher mortality on the liver transplant waiting list compared to men with comparable hepatic dysfunction.^{5, 50} A study conducted in 103 patients with cirrhosis showed that the mean Cr production rate estimated using the Mitch formula⁵¹ (14.50 ± 1.36 vs. 17.12 ± 1.90 mg/kg/day, $P < 0.0001$) and mean serum Cr level (0.82 vs 0.97 mg/dL, $P = 0.023$) were significantly lower in women than in men.¹¹ Despite lower estimated Cr production rate and serum Cr in women, the mean measured GFR did not differ between women and men, indicating that the MELD-Na score underestimated renal dysfunction in women.¹¹ There was no significant difference in the mean cystatin C, beta-trace protein, beta-2 microglobulin and SDMA levels between men and women.¹¹ Even after controlling for age, race, weight, height and measured GFR, female gender remained an independent predictor of serum Cr ($P = 0.003$), but female gender did not predict cystatin C ($P = 0.169$), beta-trace protein ($P = 0.463$), beta-2 microglobulin ($P = 0.161$), and SDMA ($P = 0.184$) levels.¹¹ Given the results of this study, the revision of the MELD score using either a more accurate estimate of GFR (e.g., new Cr-cystatin C GFR equation for Cirrhosis²¹) or gender-neutral biomarkers of renal function alternative to serum Cr (e.g., cystatin C) may eliminate this disadvantage for women on the liver transplant waiting list. Further studies are warranted to eliminate gender disparity on the liver transplant waiting list.

Prevalence of Acute Kidney Injury (AKI) and HRS in Patients with Cirrhosis

The prevalence of AKI and HRS in cirrhosis in published studies show significant variations due to the definition of HRS employed and how rigidly inclusion/exclusion criteria are

applied. Reflecting the difficulty in the application of even generally accepted diagnostic criteria, Salerno and colleagues⁵² reported that they presumed the diagnosis of HRS in 36% of patients as they did not meet all the consensus diagnostic criteria prevailing at that time. In a prospective study conducted by Planas and colleagues⁵³ among 263 patients with decompensated cirrhosis and moderate to severe ascites, 8% of patients developed HRS (3% type 1 and 5% type 2 HRS) during a mean follow-up of 41 months. According to one review where the number of patients with AKI was reported by adding up from multiple references, 19% of hospitalized patients with cirrhosis had AKI/acute renal failure; and among those with acute renal failure, about 17% had HRS⁵⁴. In a multicenter prospective study of 188 inpatients with cirrhosis and AKI diagnosed by criteria proposed by ADQI and IAC², about 9% and 21% of subjects were diagnosed with HRS and ATN, respectively.⁴⁴ In a single study that was conducted among 283 patients with cirrhosis, 42% of patients had AKI defined based on risk, injury, failure, loss and end-stage renal disease (RIFLE)⁵⁵ criteria.⁵⁶ Among these 283 patients with cirrhosis, 12% and 11% were diagnosed with HRS and ATN, respectively.⁵⁶ A prospective study conducted among 90 outpatients with cirrhosis and ascites, 54% of patients developed AKI diagnosed by criteria proposed by ADQI and IAC² and had 82 episodes of AKI during an average of 14 months of follow-up.⁵⁷ Huelin *et al.*⁵⁸ found that based on the new AKI criteria^{30, 33}, over half of the patients (290 out of 547 patients) with cirrhosis admitted to the hospital had AKI. Not surprisingly, HRS and ATN were more common in patients with stage 2 and 3 AKI compared to patients with stage 1 AKI.⁵⁸ As expected, the prevalence of HRS in patients with cirrhosis varies most dramatically based on the diagnostic criteria employed and the rigor with which it is applied. At this time, a large cohort study is needed to determine the precise incidence and prevalence of HRS based on the new criteria proposed by the IAC.³⁰

Pathophysiology of HRS

Reduction in Cortical Renal Blood Flow is a Landmark Feature of HRS

The hallmark of HRS is renal dysfunction secondary to renal vasoconstriction in patients with cirrhosis and portal hypertension.¹ Rivolta *et al.*⁴⁰ assessed RBF by measuring renal RIs using Doppler Ultrasonography. The results of this study showed that in patients with cirrhosis without ascites and diuretic-sensitive ascites, renal RIs showed a gradual decrease starting from the main renal artery, followed by interlobar arteries toward cortical arteries.⁴⁰ In contrast, in patients cirrhosis and diuretic-refractory ascites, this gradual decrease disappeared as renal RIs were almost equally elevated, not only in the main renal and interlobar arteries but also in the cortical arteries.⁴⁰ These findings suggest that reduction in RBF in cirrhosis progresses from the renal hilum toward the renal cortex with the severity of ascites, the latter being a surrogate marker for portal hypertension.⁴⁰ Eventually, the gap between interlobar and cortical artery RIs disappear in patients with diuretic-refractory ascites (Figure 2).⁴⁰ Similar findings were reported when renal RIs in the renal arcuate arteries were measured to evaluate the cortical RBF in patients with cirrhosis (Figure 2).³⁹ The results of this study showed that patients with cirrhosis and diuretic-refractory ascites had lower filtration fraction and higher kidney arcuate artery resistive index compared to those without ascites.³⁹ This negative correlation between kidney arcuate artery RI and filtration fraction suggests that the inability of kidneys to increase filtration fraction was associated with reductions in renal cortical blood flow in advanced cirrhosis.³⁹ Kew *et al.*³⁸ demonstrated that there was a significant correlation between cortical blood flow and Cr clearance in patients with cirrhosis. Similarly, Epstein *et al.*^{1,41} showed that in HRS type 1, there was severe vasoconstriction involving cortical renal arteries. While patients without ascites and with diuretic-sensitive ascites preserve cortical renal blood, those with diuretic-refractory ascites

and HRS have substantial reduction in RBF in renal cortical arterial flow.^{39, 40} Marked cortical ischemia is considered to be a landmark feature of cirrhosis and diuretic-refractory ascites and in particular, HRS.^{1, 38-41}

Nitric Oxide (NO) Dysfunction

Patients with compensated cirrhosis without a baseline CKD may have normal GFR despite mild to moderate reduction in RPF for prolonged periods.³⁸ This is due to increased filtration fraction (normal $GFR = [increased \text{ filtration fraction}] * [reduced \text{ RPF}]$)⁵⁹ compensating for mild to moderate reductions in RPF.³⁹ Filtration fraction is increased by vasoconstrictor effect of angiotensin II on efferent renal arterioles and vasodilator effect of prostaglandins on afferent renal arterioles; thereby preserving adequate pressure in the glomeruli to maintain GFR despite mild to moderate reduction in renal blood flow.⁵⁹ In advanced stages of cirrhosis however, GFR decreases substantially as the more severe reduction in RPF cannot be compensated by increases in filtration fraction.^{39, 42} Drugs (e.g. angiotensin-converting enzyme inhibitors, angiotensin II receptor blockers, non-steroidal anti-inflammatory drugs) that blunt this compensatory mechanism of kidneys for reduced RBF can further reduce GFR, and thereby result in AKI.⁵⁹ Several studies suggest that RBF may be reduced at earlier stages of cirrhosis with a progressive reduction in RBF and GFR associated with progressive portal hypertension manifested by increasing severity of ascites.^{21, 38-40, 60, 61}

In cirrhosis, reduction in RBF is attributed to either excessive or insufficient production of NO.⁶²⁻⁶⁵ Excessive NO production results in splanchnic vasodilation, reduced effective arterial blood volume, activation of the renin-angiotensin-aldosterone system (RAAS), sympathetic nervous system, renal vasoconstriction and thereby reduced RBF.⁶²⁻⁶⁵ While excessive NO

production leads to reduced RBF, several investigators have demonstrated that, **reduced NO** production **also causes reduced RBF**; and elevated levels of dimethylarginines including SDMA and ADMA are associated with reduced NO production.^{62-64, 66, 67} NO synthesis from L-arginine is catalyzed by nitric oxide synthase (NOS).^{68, 69} ADMA, an endogenous inhibitor of NOS^{62, 68}, is hydrolyzed by dimethylarginine dimethylaminohydrolase (DDAH).^{62, 67, 70-75} Because DDAH activity requires intact liver function⁶⁴, ADMA levels are elevated in advanced liver disease^{21, 62, 67, 70-75}, thereby inhibiting NOS, reducing NO production and compromising RBF.^{62-64, 66} In this setting, plasma levels of SDMA, an ADMA isomer, are also increased due to impaired hepatic and renal clearance^{21, 62, 71}. High levels of SDMA compete with L-arginine for endothelial transport⁷¹ and further reduce NO production, leading to reduced RBF; it has been suggested that SDMA is a potential marker of HRS.⁶² Other studies have shown that dimethylarginines including SDMA and ADMA, were independent predictors of measured GFR in patients with cirrhosis.²¹ HRS is clearly a dynamic process, and in the presence of severe, or prolonged reduction in RBF due to altered NO production, may be the mechanism by which HRS can progress to ischemic ATN.⁴²

The Association of HRS with **Infections**, Systemic Inflammatory Response Syndrome (SIRS), Bile Cast Nephropathy, and Proximal Tubulopathy

Despite currently available treatments, HRS is associated with high mortality.^{3, 76} Multiple factors including infections, bile cast nephropathy, proximal tubulopathy and progression of HRS to ATN can be associated with poor outcomes and non-response to HRS treatment in patients with cirrhosis.

HRS is often precipitated by infections.^{77, 78} Barreto *et al.*⁷⁷ showed that nearly 70% of patients with infection-related HRS could not recover from HRS even after adequate treatment of infection. It is noted however that in that study, patients received therapy for HRS (terlipressin and albumin) only after the infection was treated; it is possible that earlier simultaneous treatment of infection and HRS may be associated with improved outcomes.⁷⁷ Age, presence of a nosocomial infection and serum bilirubin level at the time of diagnosis were independent predictors of irreversibility of HRS type 1.⁷⁷ Similarly, Nazar *et al.*⁷⁹ showed that the proportion of patients with HRS type 1 and serum bilirubin levels equal or greater than 10 mg/dL who responded to terlipressin and albumin treatment was significantly lower compared to patients whose serum bilirubin levels were lower than 10 mg/dL (13% vs. 67%, $P=0.001$). The irreversibility of HRS in patients with cirrhosis and markedly elevated bilirubin levels may be explained by bile cast nephropathy and proximal tubulopathy superimposed on HRS⁸⁰⁻⁸². Van Slambrouck *et al.*⁸¹ reported that 85% of patients with HRS had bile cast nephropathy that was diagnosed by microscopic demonstration of intratubular bile casts positively stained by Hall histochemical staining. Besides bile cast nephropathy superimposed on HRS, patients with cirrhosis and jaundice can develop proximal tubulopathy mimicking Fanconi syndrome and present with low serum uric acid and phosphate and elevated bile acid levels.⁸¹⁻⁸³ While serum bilirubin has commonly been shown to be an independent predictor of response to therapy, this has not been uniformly observed⁸⁴ and the precise role of bile cast nephropathy in HRS remains unclear.

HRS can also be associated with SIRS with or without infection.^{78, 85} A multicenter prospective study showed that SIRS was an independent predictor of mortality in patients with cirrhosis and acute functional renal failure.⁷⁸ Results of this study showed that that 59% of

patients with cirrhosis and HRS developed SIRS; 50% of those who developed HRS associated with SIRS had an infection.⁷⁸ A recent retrospective study conducted among 58 patients with HRS associated with SIRS showed that the proportion of patients who had HRS reversal was significantly higher in the terlipressin plus albumin group compared to those who were treated with albumin and placebo.⁸⁵ No significant improvement in renal function was observed when terlipressin and albumin was administered to patients with HRS without SIRS.⁸⁵ At first glance, this study outcome may seem implausible; terlipressin, -via its splanchnic and systemic vasoconstrictive effect would be expected to improve renal function better in HRS patients without SIRS compared to those with SIRS.⁸⁵ However, the observed outcome may be attributed to the indirect anti-inflammatory effect of terlipressin in the presence of SIRS.⁸⁵ Terlipressin, or other splanchnic vasoconstrictors, by reducing portal venous pressure may decrease gut bacterial translocation reducing the production of proinflammatory cytokines (i.e. interleukin-6, tumor necrosis factor-alpha) and endotoxins.⁸⁵ These findings are in line with studies that showed beneficial effect of pentoxifylline, a tumor necrosis factor-alpha synthesis inhibitor, in reversing HRS in patients with severe alcoholic hepatitis⁸⁶ and preventing HRS⁸⁷ and renal insufficiency⁸⁸ in those with cirrhosis.⁸⁵ Like other manifestations of acute on chronic liver failure, proinflammatory mechanisms may play a significant role in the pathogenesis of HRS.

Treatment of HRS

Vasoconstrictor Drug Treatment

Once the diagnosis of AKI-HRS is established, the vasopressin analogue terlipressin is considered the first-line vasoconstrictor drug in the treatment of HRS where available^{89, 90}; it is not available in the US (**Figure 1D**). Terlipressin is generally administered initially at a dose of

0.5-1 mg intravenous (IV) bolus, every 4 to 6 hours (h); the dose can be increased to 2 mg IV bolus every 4 to 6 h if there is less than 25% reduction in serum Cr after 3 days and no side effects occur.^{35, 89-91} Increasing experience with continuous infusion terlipressin has accumulated suggesting it may be the preferred dosing regimen.⁹² Terlipressin should be discontinued after a maximum 14 days of treatment if there is no improvement in renal function.^{35, 89, 91} Where terlipressin is not available, octreotide, a somatostatin analogue in combination with midodrine, an alpha-adrenergic agonist is the recommended drug regimen for the treatment of HRS type I.^{93, 94} Octreotide is administered as 100 micrograms to 200 micrograms subcutaneously every 8 h.^{35, 89-91, 93, 94} Midodrine is administered as 7.5 mg orally three times a day up to 12.5 mg orally three times a day; the dose should be titrated to achieve an increase of 15 mm Hg in mean arterial pressure.^{35, 89-91, 93, 94} Noradrenaline, an alpha-adrenergic agonist may be used for the treatment of HRS type 1; cardiac monitoring in an intensive care unit is required.^{35, 89-91, 93, 94} Noradrenaline is administered at 0.5-3 mg/h continuous IV infusion, titrating dosing to achieve an increase of 10 mm Hg in mean arterial pressure.^{35, 89-91, 93, 94} Albumin should be given in combination with any vasoconstrictor drug regimens.^{35, 89-91, 93, 94} The recommended dose is generally 20 to 40 g IV once daily after the initial dose of albumin is administered as 1 g/kg/day for 2 days.^{35, 89-91, 93, 94}

Several meta-analyses⁹⁵⁻¹⁰² have evaluated the effectiveness of vasoconstrictors^{92, 103-117} for reversal of HRS (**Table 2**). All these studies showed that terlipressin was significantly superior to placebo with or without albumin.^{95-100, 102} Comparisons of terlipressin to noradrenaline and noradrenaline to octreotide plus midodrine did not show any significant difference in reversing HRS.^{95, 97, 98, 101} Terlipressin was significantly more efficacious in reversing HRS compared to octreotide plus midodrine.^{97, 104} A pooled analysis of the two large

placebo-controlled, randomized studies in patients with HRS type 1 showed that terlipressin plus albumin was significantly more effective than placebo plus albumin.¹¹⁸

Meta-analyses⁹⁶⁻¹⁰² have also evaluated drug therapies^{92, 103-117, 119-121} for mortality reduction without liver transplantation (**Table 3**). Meta-analyses of terlipressin versus noradrenaline, dopamine plus furosemide, and octreotide plus midodrine did not show any significant reduction in mortality.^{97, 98, 101} Similarly, meta-analysis of noradrenaline versus octreotide plus midodrine did not significantly reduce mortality.^{97, 98} Although meta-analyses showed that there was no survival superiority of terlipressin over noradrenaline^{97, 98, 101}, terlipressin was shown to be more economical compared to noradrenaline in the treatment of HRS.¹⁰¹ While these results are disappointing, it must be noted that interventions to improve renal function do not affect the underlying liver disease in these patients. Any intervention should not be expected to have more than a modest effect on survival which would be difficult to demonstrate even in very large studies.

Renal Replacement Therapy (RRT), Transjugular Intrahepatic Porto-Systemic Shunt (TIPS), and Molecular Adsorbent Recirculating System (MARS)

Non-vasoconstrictor treatment of HRS include RRT, MARS and TIPS. In patients with irreversible HRS with no response to vasoconstrictor drugs, **RRT** either in the form of hemodialysis or continuous veno-venous hemofiltration should be **considered**; particularly in the presence of intractable fluid overload and acidosis, uremic symptoms and electrolyte abnormalities (i.e. hyperkalemia, hyponatremia, hypercalcemia).^{35, 89, 93, 94, 122-124} In a randomized trial of 189 patients with acute on chronic liver failure, MARS significantly decreased serum Cr at day 4 compared to standard medical therapy.¹²⁵ However, there was no significant difference

in 28-day mortality rate between patients with HRS who had MARS compared to those who had standard medical therapy.¹²⁵ A prospective, randomized, controlled trial showed that patients with HRS type 1 who were treated with MARS, standard medical treatment and hemodiafiltration had significant reduction in serum Cr and mortality compared to those who were treated with standard medical treatment and hemodiafiltration.¹²⁶ While TIPS is generally contraindicated in patients with unresolved HRS type 1, it was shown to reduce the risk of HRS in patients with cirrhosis and diuretic-refractory ascites.¹²⁷

Liver Transplantation Alone (LTA) vs. Simultaneous Liver-Kidney Transplantation (SLKT)

Liver transplantation, when available and possible, is clearly the optimal treatment for HRS type 1.^{93, 94} SLKT is the procedure of choice if native kidney recovery is not expected after LTA.^{27, 35} Identifying patients who will require SLKT versus LTA remains a **major challenge**. According to SLKT Summit Consensus recommendations published in 2012, liver transplant candidates with AKI can be qualified for SLKT if they have a stage 3 AKI for 4 weeks or GFR measured by iothalamate clearance ≤ 25 ml/min or GFR estimated by MDRD-6 equation ≤ 35 ml/min for 4 weeks.²⁷ Candidates with CKD can be qualified if they have GFR measured by iothalamate clearance ≤ 30 ml/min or GFR estimated by MDRD-6 equation ≤ 40 ml/min, or proteinuria ≥ 2 g/day, greater than 30% global glomerulosclerosis or interstitial fibrosis or metabolic disease for at least 3 months.²⁷ These eligibility criteria do not appear to be strictly applied and show large variations among liver transplant centers in the US.^{27, 35} Organ Procurement and Transplantation Network (OPTN) data show that the percentage of adult SLKTs among all adult deceased donor liver transplants in the US increased by 150%; from 4% in 2002 to 10% in 2016¹²⁸ (**Figure 3**). The cause for this increase is unclear. **Table 4** (supplementary material) shows studies that reported potential predictors^{56, 129-133} and percent

native kidney recovery^{56, 129-134} after SLKT or LTA. Although multiple factors (renal ultrasound findings¹³⁰, warm ischemia¹²⁹, severity of AKI⁵⁶, plasma protein markers¹³¹, diabetes^{131, 132}, age^{131, 132}, duration of dialysis^{132, 133}, retransplantation¹³²) have been suggested to be associated with native kidney recovery (**Table 4**, supplementary material), lack of reliable biomarkers of native kidney recovery after liver transplantation validated in large cohorts appears to be a major contributor to the dramatic increase in the percentage of adult SLKTs among adult deceased liver transplantations. Additionally, under the Share 35 policy implemented in 2013, more patients with cirrhosis and renal dysfunction receive transplants because of the heavily weighted serum Cr in the MELD score. The Share 35 policy assigns a higher priority for liver transplantation to regional waitlist candidates who have MELD scores ≥ 35 than local liver transplant candidates who have MELD score < 35 .¹³⁵ In their recent analysis of OPTN data, Formica *et al.*¹³⁶ showed that about 50% of donor kidneys implanted in liver transplant recipients had low kidney donor profile index (KDPI) (kidneys with low KDPI values have increased donor quality and low risk of graft failure after a kidney transplant¹³⁷), were originally prioritized for children and other selected patients on the kidney transplant waiting list and this would correspond to about 250 donor kidneys per year on the kidney transplant list.

Conclusions

Recent developments in HRS have created a state of flux in this already somewhat confusing and very challenging diagnostic and therapeutic arena. It still remains unclear as to how to best practically assess GFR in patients with cirrhosis. Serum Cr alone is limited but still remains the best practical assessment of renal function. While newer models such as the Cr-Cystatin GFR equation for Cirrhosis²¹ are promising, it remains to be seen whether they will find widespread acceptance and application. The clinical implications of the newly proposed

diagnostic criteria based on the dynamic, serial changes in serum Cr and the AKIN³², KDIGO clinical practice guidelines for AKI³³, ADQI and IAC² classification systems and revised recommendations of IAC³⁰ remain unclear. These new diagnostic criteria will certainly result in more hospitalized patients with cirrhosis deemed to have AKI, but whether this will result in earlier treatment and improved outcomes is not known. Renal biomarkers, particularly associated with metabolomic profiling, may ultimately prove to be helpful in more precisely establishing a diagnosis of HRS, but they currently appear to be of limited, practical clinical value. Current drug therapy with vasopressors, such as terlipressin and norepinephrine, are effective in improving renal function, although clearly more effective therapy to increase the rates of HRS reversal is needed. The increasing recognition of the roles of NO and the “ACLF inflammatory cascade” should allow the development of non-vasopressor interventions in combination therapies. Liver transplantation remains the definitive treatment for HRS; the current main challenge is the accurate identification of those patients who require SLKT versus LTA. A practical, robust, evidence-based algorithm to predict native kidney recovery after LTA remains an unmet medical need.

FIGURE LEGENDS

Figure 1. Algorithm in the diagnosis and treatment of AKI-HRS for hepatorenal disorders in cirrhosis.^{30, 32-35}

Figure 2. Renal vasoconstriction in cirrhosis progresses from main renal artery (hilum), toward interlobar arteries (renal medulla) and finally affects arcuate (junction of renal medulla and cortex) and interlobular arteries (renal cortex).⁴⁰ There is an inverse relationship between renal blood flow (RBF) and renal resistive index (RI).^{39, 40} When RBF decreases, renal RI increases.^{39, 40} While patients without ascites and with diuretic-sensitive ascites preserve cortical renal blood, those with diuretic-refractory ascites have substantial reduction in cortical renal blood flow.^{39, 40} Therefore, while there is a renal RI gap between interlobar and cortical arteries in patients with cirrhosis without ascites and with diuretic-sensitive ascites, this RI gap disappears due to increase in both interlobar and cortical RIs in patients with cirrhosis and diuretic-refractory ascites.⁴⁰ Cortical ischemia is considered to be the landmark feature of cirrhosis and diuretic-refractory ascites and HRS.^{1, 38-41} (*Used with permission of Baylor College of Medicine*).

Figure 3. Percentage of adult simultaneous liver-kidney transplants (SLKT) among all adult deceased liver transplants in the US. Since the implementation of MELD score in 2002, there has been 150% increase in the percentage of adult SLKTs among all adult deceased donor liver transplants in the US; from 4% in 2002 to 10% in 2016. Based on Organ Procurement and Transplantation Network (OPTN) data as of January 23, 2017.¹²⁸

REFERENCES

1. Epstein M. Hepatorenal syndrome: emerging perspectives of pathophysiology and therapy. *J Am Soc Nephrol* 1994;4:1735-53.
2. Wong F, Nadim MK, Kellum JA, et al. Working Party proposal for a revised classification system of renal dysfunction in patients with cirrhosis. *Gut* 2011;60:702-9.
3. Alessandria C, Ozdogan O, Guevara M, et al. MELD score and clinical type predict prognosis in hepatorenal syndrome: relevance to liver transplantation. *Hepatology* 2005;41:1282-9.
4. Cocchetto DM, Tschanz C, Bjornsson TD. Decreased rate of creatinine production in patients with hepatic disease: implications for estimation of creatinine clearance. *Ther Drug Monit* 1983;5:161-8.
5. Mindikoglu AL, Regev A, Seliger SL, et al. Gender disparity in liver transplant waiting-list mortality: the importance of kidney function. *Liver Transpl* 2010;16:1147-57.
6. Papadakis MA, Arieff AI. Unpredictability of clinical evaluation of renal function in cirrhosis. Prospective study. *Am J Med* 1987;82:945-52.

7. Sherman DS, Fish DN, Teitelbaum I. Assessing renal function in cirrhotic patients: problems and pitfalls. *Am J Kidney Dis* 2003;41:269-78.
8. Stevens LA, Coresh J, Greene T, et al. Assessing kidney function--measured and estimated glomerular filtration rate. *N Engl J Med* 2006;354:2473-83.
9. Mindikoglu AL, Dowling TC, Weir MR, et al. Performance of chronic kidney disease epidemiology collaboration creatinine-cystatin C equation for estimating kidney function in cirrhosis. *Hepatology* 2014;59:1532-42.
10. Daugherty NA, Hammond KB, Osberg IM. Bilirubin interference with the kinetic Jaffé method for serum creatinine. *Clin Chem* 1978;24:392-3.
11. Mindikoglu AL, Opekun AR, Mitch WE, et al. Serum Creatinine in Female Patients with Cirrhosis Unfairly Bias Liver Transplant Wait List Ranking: Implications for Elimination of Gender Disparities in Access to Orthotopic Liver Transplantation. *Gastroenterology* 2017;152:5, S1120.
12. Cockcroft DW, Gault MH. Prediction of creatinine clearance from serum creatinine. *Nephron* 1976;16:31-41.
13. Hoek FJ, Kemperman FA, Krediet RT. A comparison between cystatin C, plasma creatinine and the Cockcroft and Gault formula for the estimation of glomerular filtration rate. *Nephrol Dial Transplant* 2003;18:2024-31.
14. Inker LA, Schmid CH, Tighiouart H, et al. Estimating glomerular filtration rate from serum creatinine and cystatin C. *N Engl J Med* 2012;367:20-9.
15. Kalafateli M, Wickham F, Burniston M, et al. Development and validation of a mathematical equation to estimate glomerular filtration rate in cirrhosis: The royal free hospital cirrhosis glomerular filtration rate. *Hepatology* 2017;65:582-591.

16. Larsson A, Malm J, Grubb A, et al. Calculation of glomerular filtration rate expressed in mL/min from plasma cystatin C values in mg/L. *Scand J Clin Lab Invest* 2004;64:25-30.
17. Levey AS, Bosch JP, Lewis JB, et al. A more accurate method to estimate glomerular filtration rate from serum creatinine: a new prediction equation. Modification of Diet in Renal Disease Study Group. *Ann Intern Med* 1999;130:461-70.
18. Levey AS, Coresh J, Greene T, et al. Expressing the Modification of Diet in Renal Disease Study equation for estimating glomerular filtration rate with standardized serum creatinine values. *Clin Chem* 2007;53:766-72.
19. Levey AS, Coresh J, Greene T, et al. Using standardized serum creatinine values in the modification of diet in renal disease study equation for estimating glomerular filtration rate. *Ann Intern Med* 2006;145:247-54.
20. Levey AS, Stevens LA, Schmid CH, et al. A new equation to estimate glomerular filtration rate. *Ann Intern Med* 2009;150:604-12.
21. Mindikoglu AL, Dowling TC, Magder LS, et al. Estimation of Glomerular Filtration Rate in Patients With Cirrhosis by Using New and Conventional Filtration Markers and Dimethylarginines. *Clin Gastroenterol Hepatol* 2016;14:624-632 e2.
22. Stevens LA, Coresh J, Schmid CH, et al. Estimating GFR using serum cystatin C alone and in combination with serum creatinine: a pooled analysis of 3,418 individuals with CKD. *Am J Kidney Dis* 2008;51:395-406.
23. Cholongitas E, Ioannidou M, Goulis I, et al. Comparison of creatinine and cystatin formulae with ⁵¹Chromium-ethylenediaminetetraacetic acid glomerular filtration rate in patients with decompensated cirrhosis. *J Gastroenterol Hepatol* 2017;32:191-198.

24. De Souza V, Hadj-Aissa A, Dolomanova O, et al. Creatinine- versus cystatine C-based equations in assessing the renal function of candidates for liver transplantation with cirrhosis. *Hepatology* 2014;59:1522-31.
25. Francoz C, Nadim MK, Baron A, et al. Glomerular filtration rate equations for liver-kidney transplantation in patients with cirrhosis: validation of current recommendations. *Hepatology* 2014;59:1514-21.
26. Francoz C, Prie D, Abdelrazek W, et al. Inaccuracies of creatinine and creatinine-based equations in candidates for liver transplantation with low creatinine: impact on the model for end-stage liver disease score. *Liver Transpl* 2010;16:1169-77.
27. Nadim MK, Sung RS, Davis CL, et al. Simultaneous liver-kidney transplantation summit: current state and future directions. *Am J Transplant* 2012;12:2901-8.
28. Nair S, Verma S, Thuluvath PJ. Pretransplant renal function predicts survival in patients undergoing orthotopic liver transplantation. *Hepatology* 2002;35:1179-85.
29. Filler G, Bokenkamp A, Hofmann W, et al. Cystatin C as a marker of GFR--history, indications, and future research. *Clin Biochem* 2005;38:1-8.
30. Angeli P, Gines P, Wong F, et al. Diagnosis and management of acute kidney injury in patients with cirrhosis: revised consensus recommendations of the International Club of Ascites. *J Hepatol* 2015;62:968-74.
31. Salerno F, Gerbes A, Gin s P, et al. Diagnosis, prevention and treatment of hepatorenal syndrome in cirrhosis. *Gut* 2007;56:1310-8.
32. Mehta RL, Kellum JA, Shah SV, et al. Acute Kidney Injury Network: report of an initiative to improve outcomes in acute kidney injury. *Crit Care* 2007;11:R31.

33. Kidney Disease: Improving Global Outcomes (KDIGO) Acute Kidney Injury Work Group. KDIGO Clinical Practice Guideline for Acute Kidney Injury. *Kidney inter., Suppl.* 2012;2: 1–138.
34. Nadim MK, Durand F, Kellum JA, et al. Management of the critically ill patient with cirrhosis: A multidisciplinary perspective. *J Hepatol* 2016;64:717-35.
35. O'Leary JG, Levitsky J, Wong F, et al. Protecting the kidney in liver transplant candidates Practice-Based Recommendations from the American Society of Transplantation Liver and Intestine Community of Practice. *Am J Transplant* 2016.
36. Belcher JM, Garcia-Tsao G, Sanyal AJ, et al. Association of AKI with mortality and complications in hospitalized patients with cirrhosis. *Hepatology* 2013;57:753-62.
37. Epstein M. Hepatorenal Syndrome. In Epstein M (ed) , 4th ed. Philadelphia: Hanley & Belfus, Inc, 1996; 75-108.
38. Kew MC, Brunt PW, Varma RR, et al. Renal and intrarenal blood-flow in cirrhosis of the liver. *Lancet* 1971;2:504-10.
39. Mindikoglu AL, Dowling TC, Wong-You-Cheong JJ, et al. A pilot study to evaluate renal hemodynamics in cirrhosis by simultaneous glomerular filtration rate, renal plasma flow, renal resistive indices and biomarkers measurements. *Am J Nephrol* 2014;39:543-52.
40. Rivolta R, Maggi A, Cazzaniga M, et al. Reduction of renal cortical blood flow assessed by Doppler in cirrhotic patients with refractory ascites. *Hepatology* 1998;28:1235-40.
41. Epstein M, Berk DP, Hollenberg NK, et al. Renal failure in the patient with cirrhosis. The role of active vasoconstriction. *Am J Med* 1970;49:175-85.

42. Mindikoglu AL, Weir MR. Current concepts in the diagnosis and classification of renal dysfunction in cirrhosis. *Am J Nephrol* 2013;38:345-54.
43. Fagundes C, Pepin MN, Guevara M, et al. Urinary neutrophil gelatinase-associated lipocalin as biomarker in the differential diagnosis of impairment of kidney function in cirrhosis. *J Hepatol* 2012;57:267-73.
44. Belcher JM, Sanyal AJ, Peixoto AJ, et al. Kidney biomarkers and differential diagnosis of patients with cirrhosis and acute kidney injury. *Hepatology* 2014;60:622-32.
45. Mindikoglu AL, Opekun AR, Coarfa C, et al. Robust Metabolomic Signature is Associated with Altered Renal Hemodynamics in Patients with Cirrhosis. *Gastroenterology* 2017;152:5, S1044.
46. Bjornsson TD. Use of serum creatinine concentrations to determine renal function. *Clin Pharmacokinet* 1979;4:200-22.
47. Organ Procurement and Transplantation Network Policies. Available at: https://optn.transplant.hrsa.gov/media/1200/optn_policies.pdf#nameddest=Policy_09. Accessed on January 1, 2017.
48. Kim WR, Biggins SW, Kremers WK, et al. Hyponatremia and mortality among patients on the liver-transplant waiting list. *N Engl J Med* 2008;359:1018-26.
49. Malinchoc M, Kamath PS, Gordon FD, et al. A model to predict poor survival in patients undergoing transjugular intrahepatic portosystemic shunts. *Hepatology* 2000;31:864-71.
50. Cholongitas E, Marelli L, Kerry A, et al. Female liver transplant recipients with the same GFR as male recipients have lower MELD scores--a systematic bias. *Am J Transplant* 2007;7:685-92.

51. Mitch WE, Walser M. A proposed mechanism for reduced creatinine excretion in severe chronic renal failure. *Nephron* 1978;21:248-54.
52. Salerno F, Cazzaniga M, Merli M, et al. Diagnosis, treatment and survival of patients with hepatorenal syndrome: a survey on daily medical practice. *J Hepatol* 2011;55:1241-8.
53. Planas R, Montoliu S, Balleste B, et al. Natural history of patients hospitalized for management of cirrhotic ascites. *Clin Gastroenterol Hepatol* 2006;4:1385-94.
54. Garcia-Tsao G, Parikh CR, Viola A. Acute kidney injury in cirrhosis. *Hepatology* 2008;48:2064-77.
55. Bellomo R, Ronco C, Kellum JA, et al. Acute renal failure - definition, outcome measures, animal models, fluid therapy and information technology needs: the Second International Consensus Conference of the Acute Dialysis Quality Initiative (ADQI) Group. *Crit Care* 2004;8:R204-12.
56. Nadim MK, Genyk YS, Tokin C, et al. Impact of the etiology of acute kidney injury on outcomes following liver transplantation: acute tubular necrosis versus hepatorenal syndrome. *Liver Transpl* 2012;18:539-48.
57. Tsien CD, Rabie R, Wong F. Acute kidney injury in decompensated cirrhosis. *Gut* 2013;62:131-7.
58. Huelin P, Piano S, Sola E, et al. Validation of a Staging System for Acute Kidney Injury in Patients With Cirrhosis and Association With Acute-on-Chronic Liver Failure. *Clin Gastroenterol Hepatol* 2017;15:438-445 e5.
59. Koeppen BM, Stanton BA: Glomerular Filtration and Renal Blood Flow. In: Koeppen BM, Stanton BA, eds. *Renal Physiology*. 4th ed. Philadelphia: Mosby; 2007:31-46.

60. Celebi H, Donder E, Celiker H. Renal blood flow detection with Doppler ultrasonography in patients with hepatic cirrhosis. *Arch Intern Med* 1997;157:564-6.
61. Leslie SH, Johnston B, Ralli EP. Renal function as a factor in fluid retention in patients with cirrhosis of the liver. *J Clin Invest* 1951;30:1200-7.
62. Lluch P, Mauricio MD, Vila JM, et al. Accumulation of symmetric dimethylarginine in hepatorenal syndrome. *Exp Biol Med (Maywood)* 2006;231:70-5.
63. Nijveldt RJ, Teerlink T, Siroen MP, et al. The liver is an important organ in the metabolism of asymmetrical dimethylarginine (ADMA). *Clin Nutr* 2003;22:17-22.
64. Nijveldt RJ, Teerlink T, van Leeuwen PA. The asymmetrical dimethylarginine (ADMA)-multiple organ failure hypothesis. *Clin Nutr* 2003;22:99-104.
65. Martin PY, Gines P, Schrier RW. Nitric oxide as a mediator of hemodynamic abnormalities and sodium and water retention in cirrhosis. *N Engl J Med* 1998;339:533-41.
66. Nijveldt RJ, Teerlink T, Van Der Hoven B, et al. Asymmetrical dimethylarginine (ADMA) in critically ill patients: high plasma ADMA concentration is an independent risk factor of ICU mortality. *Clin Nutr* 2003;22:23-30.
67. Vallance P, Leone A, Calver A, et al. Accumulation of an endogenous inhibitor of nitric oxide synthesis in chronic renal failure. *Lancet* 1992;339:572-5.
68. Vallance P, Leone A, Calver A, et al. Endogenous dimethylarginine as an inhibitor of nitric oxide synthesis. *J Cardiovasc Pharmacol* 1992;20 Suppl 12:S60-2.
69. Vallance P. Endothelial regulation of vascular tone. *Postgrad Med J* 1992;68:697-701.
70. Lluch P, Torondel B, Medina P, et al. Plasma concentrations of nitric oxide and asymmetric dimethylarginine in human alcoholic cirrhosis. *J Hepatol* 2004;41:55-9.

71. Siroen MP, van der Sijp JR, Teerlink T, et al. The human liver clears both asymmetric and symmetric dimethylarginine. *Hepatology* 2005;41:559-65.
72. Siroen MP, Wiest R, Richir MC, et al. Transjugular intrahepatic portosystemic shunt-placement increases arginine/asymmetric dimethylarginine ratio in cirrhotic patients. *World J Gastroenterol* 2008;14:7214-9.
73. Richir MC, Bouwman RH, Teerlink T, et al. The prominent role of the liver in the elimination of asymmetric dimethylarginine (ADMA) and the consequences of impaired hepatic function. *JPEN J Parenter Enteral Nutr* 2008;32:613-21.
74. Vizzutti F, Romanelli RG, Arena U, et al. ADMA correlates with portal pressure in patients with compensated cirrhosis. *Eur J Clin Invest* 2007;37:509-15.
75. Mookerjee RP, Malaki M, Davies NA, et al. Increasing dimethylarginine levels are associated with adverse clinical outcome in severe alcoholic hepatitis. *Hepatology* 2007;45:62-71.
76. Cholongitas E, Senzolo M, Patch D, et al. Cirrhotics admitted to intensive care unit: the impact of acute renal failure on mortality. *Eur J Gastroenterol Hepatol* 2009;21:744-50.
77. Barreto R, Fagundes C, Guevara M, et al. Type-1 hepatorenal syndrome associated with infections in cirrhosis: natural history, outcome of kidney function, and survival. *Hepatology* 2014;59:1505-13.
78. Thabut D, Massard J, Gangloff A, et al. Model for end-stage liver disease score and systemic inflammatory response are major prognostic factors in patients with cirrhosis and acute functional renal failure. *Hepatology* 2007;46:1872-82.

79. Nazar A, Pereira GH, Guevara M, et al. Predictors of response to therapy with terlipressin and albumin in patients with cirrhosis and type 1 hepatorenal syndrome. *Hepatology* 2010;51:219-26.
80. Adebayo D, Morabito V, Davenport A, et al. Renal dysfunction in cirrhosis is not just a vasomotor nephropathy. *Kidney Int* 2015;87:509-15.
81. van Slambrouck CM, Salem F, Meehan SM, et al. Bile cast nephropathy is a common pathologic finding for kidney injury associated with severe liver dysfunction. *Kidney Int* 2013;84:192-7.
82. Bairaktari E, Liamis G, Tsolas O, et al. Partially reversible renal tubular damage in patients with obstructive jaundice. *Hepatology* 2001;33:1365-9.
83. Moutzouri E, Liberopoulos EN, Elisaf M. Life-threatening hypophosphataemia in a cirrhotic patient with jaundice. *Arch Med Sci* 2011;7:736-9.
84. Boyer TD, Sanyal AJ, Garcia-Tsao G, et al. Predictors of response to terlipressin plus albumin in hepatorenal syndrome (HRS) type 1: relationship of serum creatinine to hemodynamics. *J Hepatol* 2011;55:315-21.
85. Wong F, Pappas SC, Boyer TD, et al. Terlipressin Improves Renal Function and Reverses Hepatorenal Syndrome in Patients With Systemic Inflammatory Response Syndrome. *Clin Gastroenterol Hepatol* 2017;15:266-272 e1.
86. Akriviadis E, Botla R, Briggs W, et al. Pentoxifylline improves short-term survival in severe acute alcoholic hepatitis: a double-blind, placebo-controlled trial. *Gastroenterology* 2000;119:1637-48.

87. Tyagi P, Sharma P, Sharma BC, et al. Prevention of hepatorenal syndrome in patients with cirrhosis and ascites: a pilot randomized control trial between pentoxifylline and placebo. *Eur J Gastroenterol Hepatol* 2011;23:210-7.
88. Lebrec D, Thabut D, Oberti F, et al. Pentoxifylline does not decrease short-term mortality but does reduce complications in patients with advanced cirrhosis. *Gastroenterology* 2010;138:1755-62.
89. Ginès P AP, Lenz K, Møller S, Moore K, Moreau R, Merkel C, Ring-Larsen H, Bernardi M. EASL clinical practice guidelines on the management of ascites, spontaneous bacterial peritonitis, and hepatorenal syndrome in cirrhosis. *J Hepatol* 2010;53:397-417.
90. Fagundes C, Gines P. Hepatorenal syndrome: a severe, but treatable, cause of kidney failure in cirrhosis. *Am J Kidney Dis* 2012;59:874-85.
91. Durand F, Graupera I, Gines P, et al. Pathogenesis of Hepatorenal Syndrome: Implications for Therapy. *Am J Kidney Dis* 2016;67:318-28.
92. Cavallin M, Piano S, Romano A, et al. Terlipressin given by continuous intravenous infusion versus intravenous boluses in the treatment of hepatorenal syndrome: A randomized controlled study. *Hepatology* 2016;63:983-92.
93. Runyon BA. Management of adult patients with ascites due to cirrhosis: an update. *Hepatology* 2009;49:2087-107.
94. Runyon BA, Aasld. Introduction to the revised American Association for the Study of Liver Diseases Practice Guideline management of adult patients with ascites due to cirrhosis 2012. *Hepatology* 2013;57:1651-3.
95. Dobre M, Demirjian S, Sehgal AR, et al. Terlipressin in hepatorenal syndrome: a systematic review and meta-analysis. *Int Urol Nephrol* 2011;43:175-84.

96. Fabrizi F, Dixit V, Messa P, et al. Terlipressin for hepatorenal syndrome: A meta-analysis of randomized trials. *Int J Artif Organs* 2009;32:133-40.
97. Facciorusso A CA, Murad MH, Prokop LJ, Muscatiello N, Kamath PS, Singh S. . Comparative efficacy of pharmacological strategies for management of type 1 hepatorenal syndrome: a systematic review and network meta-analysis. *Lancet Gastroenterol Hepatol* 2017;2:94-102.
98. Gifford FJ, Morling JR, Fallowfield JA. Systematic review with meta-analysis: vasoactive drugs for the treatment of hepatorenal syndrome type 1. *Aliment Pharmacol Ther* 2017;45:593-603.
99. Gluud LL, Christensen K, Christensen E, et al. Systematic review of randomized trials on vasoconstrictor drugs for hepatorenal syndrome. *Hepatology* 2010;51:576-84.
100. Gluud LL, Christensen K, Christensen E, et al. Terlipressin for hepatorenal syndrome. *Cochrane Database Syst Rev* 2012:CD005162.
101. Mattos AZ, Mattos AA, Ribeiro RA. Terlipressin versus noradrenaline in the treatment of hepatorenal syndrome: systematic review with meta-analysis and full economic evaluation. *Eur J Gastroenterol Hepatol* 2016;28:345-51.
102. Sagi SV, Mittal S, Kasturi KS, et al. Terlipressin therapy for reversal of type 1 hepatorenal syndrome: a meta-analysis of randomized controlled trials. *J Gastroenterol Hepatol* 2010;25:880-5.
103. Alessandria C, Ottobrelli A, Debernardi-Venon W, et al. Noradrenalin vs terlipressin in patients with hepatorenal syndrome: a prospective, randomized, unblinded, pilot study. *J Hepatol* 2007;47:499-505.

104. Cavallin M, Kamath PS, Merli M, et al. Terlipressin plus albumin versus midodrine and octreotide plus albumin in the treatment of hepatorenal syndrome: A randomized trial. *Hepatology* 2015;62:567-74.
105. Ghosh S, Choudhary NS, Sharma AK, et al. Noradrenaline vs terlipressin in the treatment of type 2 hepatorenal syndrome: a randomized pilot study. *Liver Int* 2013;33:1187-93.
106. Hadengue A, Gadano A, Moreau R, et al. Beneficial effects of the 2-day administration of terlipressin in patients with cirrhosis and hepatorenal syndrome. *J Hepatol* 1998;29:565-70.
107. Martin-Llahi M, Pepin MN, Guevara M, et al. Terlipressin and albumin vs albumin in patients with cirrhosis and hepatorenal syndrome: a randomized study. *Gastroenterology* 2008;134:1352-9.
108. Neri S, Pulvirenti D, Malaguarnera M, et al. Terlipressin and albumin in patients with cirrhosis and type I hepatorenal syndrome. *Dig Dis Sci* 2008;53:830-5.
109. Sanyal AJ, Boyer T, Garcia-Tsao G, et al. A randomized, prospective, double-blind, placebo-controlled trial of terlipressin for type 1 hepatorenal syndrome. *Gastroenterology* 2008;134:1360-8.
110. Sharma P, Kumar A, Shrama BC, et al. An open label, pilot, randomized controlled trial of noradrenaline versus terlipressin in the treatment of type 1 hepatorenal syndrome and predictors of response. *Am J Gastroenterol* 2008;103:1689-97.
111. Singh V, Ghosh S, Singh B, et al. Noradrenaline vs. terlipressin in the treatment of hepatorenal syndrome: a randomized study. *J Hepatol* 2012;56:1293-8.

112. Solanki P, Chawla A, Garg R, et al. Beneficial effects of terlipressin in hepatorenal syndrome: a prospective, randomized placebo-controlled clinical trial. *J Gastroenterol Hepatol* 2003;18:152-6.
113. Tavakkoli H, Yazdanpanah K, Mansourian M. Noradrenalin versus the combination of midodrine and octreotide in patients with hepatorenal syndrome: randomized clinical trial. *Int J Prev Med* 2012;3:764-9.
114. Silawat FNS, Shaikh MK, Lohana RK, et al. *World Appl Sci J* 2011;12:1946-50.
115. Indrabi RA, Javid G, Zargar SA, et al. Noradrenaline is equally effective as terlipressin in reversal of type 1 hepatorenal syndrome: a randomized prospective study. *J Clin Exp Hepatol* 2013;1: S97.
116. Zafar S, Haque I, Tayyab GU, et al. Role of terlipressin and albumin combination versus albumin alone in hepatorenal syndrome. *Am J Gastroenterology* 2012;107:S175-S76.
117. Boyer TD, Sanyal AJ, Wong F, et al. Terlipressin Plus Albumin Is More Effective Than Albumin Alone in Improving Renal Function in Patients With Cirrhosis and Hepatorenal Syndrome Type 1. *Gastroenterology* 2016;150:1579-1589 e2.
118. Sanyal AJ, Boyer TD, Frederick RT, et al. Reversal of hepatorenal syndrome type 1 with terlipressin plus albumin vs. placebo plus albumin in a pooled analysis of the OT-0401 and REVERSE randomised clinical studies. *Aliment Pharmacol Ther* 2017.
119. Yang YZ, Dan ZL, Liu NZ, et al. Efficacy of terlopressin in treatment of liver cirrhosis with hepatorenal syndrome. *Journal of Internal Intensive Medicine* 2001;7:123-5.
120. Pomier-Layrargues G, Paquin SC, Hassoun Z, et al. Octreotide in hepatorenal syndrome: a randomized, double-blind, placebo-controlled, crossover study. *Hepatology* 2003;38:238-43.

121. Srivastava S, Shalimar, Vishnubhatla S, et al. Randomized Controlled Trial Comparing the Efficacy of Terlipressin and Albumin with a Combination of Concurrent Dopamine, Furosemide, and Albumin in Hepatorenal Syndrome. *J Clin Exp Hepatol* 2015;5:276-85.
122. Capling RK, Bastani B. The clinical course of patients with type 1 hepatorenal syndrome maintained on hemodialysis. *Ren Fail* 2004;26:563-8.
123. Keller F, Heinze H, Jochimsen F, et al. Risk factors and outcome of 107 patients with decompensated liver disease and acute renal failure (including 26 patients with hepatorenal syndrome): the role of hemodialysis. *Ren Fail* 1995;17:135-46.
124. Witzke O, Baumann M, Patschan D, et al. Which patients benefit from hemodialysis therapy in hepatorenal syndrome? *J Gastroenterol Hepatol* 2004;19:1369-73.
125. Banares R, Nevens F, Larsen FS, et al. Extracorporeal albumin dialysis with the molecular adsorbent recirculating system in acute-on-chronic liver failure: the RELIEF trial. *Hepatology* 2013;57:1153-62.
126. Mitzner SR, Stange J, Klammt S, et al. Improvement of hepatorenal syndrome with extracorporeal albumin dialysis MARS: results of a prospective, randomized, controlled clinical trial. *Liver Transpl* 2000;6:277-86.
127. Gines P, Uriz J, Calahorra B, et al. Transjugular intrahepatic portosystemic shunting versus paracentesis plus albumin for refractory ascites in cirrhosis. *Gastroenterology* 2002;123:1839-47.
128. Data. Available at: <http://www.optn.org/data/>. Accessed on January 23, 2017.
129. Laskey HL, Schomaker N, Hung KW, et al. Predicting renal recovery after liver transplant with severe pretransplant subacute kidney injury: The impact of warm ischemia time. *Liver Transpl* 2016;22:1085-91.

130. Levitsky J, Baker T, Ahya SN, et al. Outcomes and native renal recovery following simultaneous liver-kidney transplantation. *Am J Transplant* 2012;12:2949-57.
131. Levitsky J, Baker TB, Jie C, et al. Plasma protein biomarkers enhance the clinical prediction of kidney injury recovery in patients undergoing liver transplantation. *Hepatology* 2014;60:2017-26.
132. Sharma P, Goodrich NP, Zhang M, et al. Short-term pretransplant renal replacement therapy and renal nonrecovery after liver transplantation alone. *Clin J Am Soc Nephrol* 2013;8:1135-42.
133. Wong F, Leung W, Al Beshir M, et al. The outcome of patients with cirrhosis and Type-1 hepatorenal syndrome treated with liver transplantation. *Liver Transpl* 2015;21:300-7.
134. Francis JM, Palmer MR, Donohoe K, et al. Evaluation of native kidney recovery after simultaneous liver-kidney transplantation. *Transplantation* 2012;93:530-5.
135. Feng S, O'Grady J. Share 35: a liver in time saves lives? *Am J Transplant* 2015;15:581-2.
136. Formica RN, Aeder M, Boyle G, et al. Simultaneous Liver-Kidney Allocation Policy: A Proposal to Optimize Appropriate Utilization of Scarce Resources. *Am J Transplant* 2016;16:758-66.
137. A Guide to Calculating and Interpreting the Kidney Donor Profile Index (KDPI). Available _____ at https://optn.transplant.hrsa.gov/media/1512/guide_to_calculating_interpreting_kdpi.pdf. Accessed on January 21, 2017.

GFR and Cr Clearance Estimating Equations		Original GFR Equation Development Studies	Renal Marker Used	Population from which the GFR Equation was Derived	Most Recent External Validation Studies in Patients with Cirrhosis
Cr Equations	Cockcroft-Gault ¹²	Cockcroft and Gault (1976) ¹²	Cr	Patients from Queen Mary Veterans' Hospital	Francoz (2010) ²⁶ , Mindikoglu (2014) ⁹
	MDRD-4 ¹⁷⁻¹⁹	Levey (1999) ¹⁷ , Levey (2006) ¹⁸ , Levey (2007) ¹⁹	Cr	CKD	Francoz (2010) ²⁶ , Francoz (2014) ²⁵ , De Souza (2014) ²⁴ , Mindikoglu (2014) ⁹ , Cholongitas (2017) ²³ , Kalafateli (2017) ¹⁵
	MDRD-6 ¹⁷⁻¹⁹	Levey (1999) ¹⁷ , Levey (2006) ¹⁸ , Levey (2007) ¹⁹	Cr	CKD	Francoz (2014) ²⁵ , De Souza (2014) ²⁴ , Mindikoglu (2014) ⁹ , Kalafateli (2017) ¹⁵
	CKD-EPI Cr (2009) ²⁰	Levey (2009) ²⁰	Cr	With and without CKD	Francoz (2010) ²⁶ , Francoz (2014) ²⁵ , De Souza (2014) ²⁴ , Mindikoglu (2014) ⁹ , Cholongitas (2017) ²³ , Kalafateli (2017) ¹⁵
	Royal Free Hospital Cirrhosis GFR ¹⁵	Kalafateli (2017) ¹⁵	Cr	Cirrhosis	Kalafateli (2017) ¹⁵
Cystatin C Equations	LARSSON ¹⁶	Larsson (2004) ¹⁶	Cystatin C	Not defined	Mindikoglu (2014) ⁹ , Cholongitas (2017) ²³
	HOEK ¹³	Hoek (2003) ¹³	Cystatin C	With suspected or established renal dysfunction	De Souza (2014) ²⁴ , Mindikoglu (2014) ⁹ , Cholongitas (2017) ²³ , Kalafateli (2017) ¹⁵
	CKD-EPI Cystatin C (2012) ¹⁴	Inker (2012) ¹⁴	Cystatin C	With and without CKD	De Souza (2014) ²⁴ , Mindikoglu (2014) ⁹ , Cholongitas (2017) ²³ , Kalafateli (2017) ¹⁵
Cr-Cystatin C Equations	STEVENS ²²	Stevens (2008) ²²	Combined Cr and cystatin C	CKD	Mindikoglu (2014) ⁹
	CKD-EPI Cr-Cystatin C (2012) ¹⁴	Inker (2012) ¹⁴	Combined Cr and cystatin C	With and without CKD	De Souza (2014) ²⁴ , Mindikoglu (2014) ⁹ , Cholongitas (2017) ²³ , Kalafateli (2017) ¹⁵
	Cr-Cystatin C Equation for Cirrhosis ²¹	Mindikoglu (2016) ²¹	Combined Cr and cystatin C	Cirrhosis	Cholongitas (2017) ²³

Table 2. Meta-Analyses of Randomized Controlled Trials of Vasoactive Drugs for Reversal of HRS						
Meta-Analysis Studies	Number of Studies	Drug Combinations	Odds Ratio (OR) or Risk Ratio (RR) for HRS Reversal (95% Confidence Interval)	Heterogeneity (I ²)	Test for Overall Effect (P Value)	Studies Included in the Meta-Analysis
Fabrizi (2009) ⁹⁶	5	Terlipressin vs. placebo	OR=8.09 [3.52, 18.59]	41%	0.0001	Hadengue (1998) ¹⁰⁶ , Solanki (2003) ¹¹² , Sanyal (2008) ¹⁰⁹ , Martin-Llahi (2008) ¹⁰⁷ , Neri (2008) ¹⁰⁸
Glud (2010) ⁹⁹	4	Terlipressin alone or with albumin vs. no intervention or albumin	RR=3.76 [2.21, 6.39]	0%	Not reported	Solanki (2003) ¹¹² , Sanyal (2008) ¹⁰⁹ , Martin-Llahi (2008) ¹⁰⁷ , Neri (2008) ¹⁰⁸
Sagi (2010) ¹⁰²	4	Terlipressin vs. placebo	RR=3.66 [2.15, 6.23]	0%	<0.00001	Solanki (2003) ¹¹² , Sanyal (2008) ¹⁰⁹ , Martin-Llahi (2008) ¹⁰⁷ , Neri (2008) ¹⁰⁸
Dobre (2011) ⁹⁵	4	Terlipressin vs. placebo	OR=7.47 [3.17, 17.59]	24%	<0.00001	Solanki (2003) ¹¹² , Sanyal (2008) ¹⁰⁹ , Martin-Llahi (2008) ¹⁰⁷ , Neri (2008) ¹⁰⁸
	2	Terlipressin vs. noradrenaline	OR=1.23 [0.43, 3.54]	0%	0.70	Alessandria (2007) ¹⁰³ , Sharma (2008) ¹¹⁰
	6	Terlipressin vs. placebo/terlipressin vs. noradrenaline	OR=4.49 [1.75, 11.56]	56%	0.002	Solanki (2003) ¹¹² , Sanyal (2008) ¹⁰⁹ , Martin-Llahi (2008) ¹⁰⁷ , Neri (2008) ¹⁰⁸ , Alessandria (2007) ¹⁰³ , Sharma (2008) ¹¹⁰
Glud (2012) ¹⁰⁰	4	Terlipressin alone or with albumin vs. no intervention or albumin	RR=3.76 [2.21, 6.39]	0%	<0.00001	Solanki (2003) ¹¹² , Sanyal (2008) ¹⁰⁹ , Martin-Llahi (2008) ¹⁰⁷ , Neri (2008) ¹⁰⁸
Mattos (2016) ¹⁰¹	4	Terlipressin vs. noradrenaline	RR=1.03 [0.81, 1.31]	0%	0.80	Alessandria (2007) ¹⁰³ , Sharma (2008) ¹¹⁰ , Singh (2012) ¹¹¹ , Ghosh (2013) ¹⁰⁵
Gifford	5	Terlipressin+/-albumin vs. no	RR=2.54 [1.51, 4.26]	52%	0.0004	Solanki (2003) ¹¹² , Sanyal

(2017) ⁹⁸		intervention/placebo+/- albumin				(2008) ¹⁰⁹ , Martin-Llahi (2008) ¹⁰⁷ , Neri (2008) ¹⁰⁸ , Boyer (2016) ¹¹⁷
	1	Terlipressin infusion vs. terlipressin bolus	RR=1.22 [0.77, 1.93]	Not applicable	0.40	Cavallin (2016) ⁹²
	3	Terlipressin vs. noradrenaline	RR=0.99 [0.67, 1.45]	0%	0.94	Alessandria (2007) ¹⁰³ , Sharma (2008) ¹¹⁰ , Singh (2012) ¹¹¹
	1	Terlipressin+albumin vs. dopamine+standard care	RR=2.00 [1.14, 3.52]	Not applicable	0.02	Silawat (2011) ¹¹⁴
	1	Noradrenaline+albumin vs. octreotide+midodrine+albumin	RR=1.25 [0.70, 2.24]	Not applicable	0.45	Tavakkoli (2012) ¹¹³
Facciorusso (2017) ⁹⁷	5	Terlipressin vs. placebo	OR=4.48 [1.88, 10.67]	60%	0.0007	Sanyal (2008) ¹⁰⁹ , Martin-Llahi (2008) ¹⁰⁷ , Neri (2008) ¹⁰⁸ , Zafar (2012) ¹¹⁶ , Boyer (2016) ¹¹⁷
	4	Terlipressin vs. noradrenaline	OR=0.89 [0.47, 1.69]	0%	0.72	Alessandria (2007) ¹⁰³ , Sharma (2008) ¹¹⁰ , Singh (2012) ¹¹¹ , Indrabi (2013) ¹¹⁵
	1	Terlipressin vs. octreotide+midodrine	OR=26.25 [3.07, 224.21]	Not applicable	0.003	Cavallin (2015) ¹⁰⁴
	1	Noradrenaline vs. octreotide+midodrine	OR=2.50 [0.19, 32.19]	Not applicable	0.48	Tavakkoli (2012) ¹¹³

Table 3. Meta-Analyses of Randomized Controlled Trials of Vasoactive Drugs for Reduction of Mortality						
Meta-Analysis Studies	Number of Studies	Drug Combinations	Odds Ratio (OR) or Risk Ratio (RR) for All-Cause Mortality or Survival (95% Confidence Interval)	Heterogeneity (I^2)	Test for Overall Effect (P Value)	Studies Included in the Meta-Analysis
Fabrizi (2009) ⁹⁶	5	Terlipressin vs. placebo	OR=2.06 [0.94, 4.54]*	55%	0.07	Hadengue (1998) ¹⁰⁶ , Solanki (2003) ¹¹² , Sanyal (2008) ¹⁰⁹ , Martin-Llahi (2008) ¹⁰⁷ , Neri (2008) ¹⁰⁸
Gluud (2010) ⁹⁹	6	Vasoconstrictor drug alone or with albumin vs. no intervention or albumin	RR=0.82 [0.70, 0.96]	0	Not reported	Yang (2001) ¹¹⁹ , Solanki (2003) ¹¹² , Pomier-Lyargues (2003) ¹²⁰ , Sanyal (2008) ¹⁰⁹ , Martin-Llahi (2008) ¹⁰⁷ , Neri (2008) ¹⁰⁸
	Not reported	Terlipressin alone or with albumin vs. no intervention or albumin	RR=0.80 [0.66, 0.97]	Not reported	Not reported	Not reported
	Not reported	Terlipressin+albumin vs. albumin	RR=0.81 [0.68, 0.97]	Not reported	Not reported	Not reported
	Not reported	Terlipressin vs. no intervention	RR=0.13 [0.01, 2.10]	Not reported	Not reported	Not reported
	Not reported	Octreotide+albumin vs. albumin	RR=0.86 [0.58, 1.30]	Not reported	Not reported	Not reported
Sagi (2010) ¹⁰²	3	Terlipressin vs. control/placebo	RR=1.85 [1.00, 3.41]*	0%	0.05	Sanyal (2008) ¹⁰⁹ , Martin-Llahi (2008) ¹⁰⁷ , Neri (2008) ¹⁰⁸
Gluud (2012) ¹⁰⁰	5	Terlipressin alone or with albumin vs. no intervention or albumin	RR=0.75 [0.59, 0.97]	39%	0.028	Yang (2001) ¹¹⁹ , Solanki (2003) ¹¹² , Sanyal (2008) ¹⁰⁹ , Martin-Llahi (2008) ¹⁰⁷ , Neri (2008) ¹⁰⁸
Mattos (2016) ¹⁰¹	4	Terlipressin vs. noradrenaline	RR=1.04 [0.84, 1.30]*	0%	0.70	Alessandria (2007) ¹⁰³ , Sharma (2008) ¹¹⁰ , Singh (2012) ¹¹¹ , Ghosh (2013) ¹⁰⁵
Gifford	4	Terlipressin+/-albumin vs. no	RR=0.79 [0.63, 1.01]	53%	0.06	Solanki (2003) ¹¹² , Sanyal (2008) ¹⁰⁹ ,

(2017) ⁹⁸		intervention/placebo+/- albumin				Neri (2008) ¹⁰⁸ , Boyer (2016) ¹¹⁷
	1	Terlipressin infusion vs. terlipressin bolus	RR=1.58 [0.86, 2.91]	Not applicable	0.14	Cavallin (2016) ⁹²
	3	Terlipressin vs. noradrenaline	RR=1.04 [0.74, 1.47]	0%	0.81	Alessandria (2007) ¹⁰³ , Sharma (2008) ¹¹⁰ , Singh (2012) ¹¹¹
	2	Terlipressin+albumin vs. dopamine+standard care	RR=0.98 [0.76, 1.26]	0%	0.87	Silawat (2011) ¹¹⁴ , Srivastava (2015) ¹²¹
	1	Noradrenaline+albumin vs. octreotide+midodrine+albumin	RR=1.50 [0.60, 3.78]	Not applicable	0.39	Tavakkoli (2012) ¹¹³
Facciorusso (2017) ⁹⁷	6	Terlipressin vs. placebo	OR=0.65 [0.41, 1.05]	20%	0.08	Solanki (2003) ¹⁰⁹ , Sanyal (2008) ¹⁰⁹ , Martin-Llahi (2008) ¹⁰⁷ , Neri (2008) ¹⁰⁸ , Zafar (2012) ¹¹⁶ , Boyer (2016) ¹¹⁷
	4	Terlipressin vs. noradrenaline	OR=1.02 [0.46, 2.28]	0%	0.95	Alessandria (2007) ¹⁰³ , Sharma (2008) ¹¹⁰ , Singh (2012) ¹¹¹ , Indrabi (2013) ¹¹⁵
	1	Terlipressin vs. dopamine+furosemide	OR=1.00 [0.18-5.67]	Not applicable	1.00	Srivastava (2015) ¹²¹
	1	Terlipressin vs. octreotide+midodrine	OR=0.90 [0.27, 3.05]	Not applicable	0.87	Cavallin (2015) ¹⁰⁴
	1	Noradrenaline vs. octreotide+midodrine	OR=2.50 [0.29, 21.40]	Not applicable	0.40	Tavakkoli (2012) ¹¹³

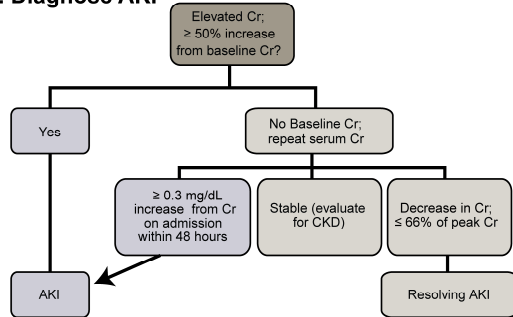
* Survival was reported instead of mortality.

Table 4. Predictors and Percent Native Kidney Recovery after Simultaneous Liver-Kidney Transplantation (SLKT) or Liver Transplantation Alone (LTA)						
Study	Type of Liver Transplant	Predictors	Number of Subjects	% Recovery	Definition of Native Kidney Recovery	Method used to Evaluate Native Kidney Recovery
Levitsky (2012) ¹³⁰	SLKT	Renal ultrasound findings	78	51%	> 20 ml/min	GFR measured by Tc-99m DTPA renal scan
				27%	> 30 ml/min	
				17%	> 40 ml/min	
Francis (2012) ¹³⁴	SLKT	N/A	13	38%	> 40% of total native kidney function	GFR measured by MAG3 renal scan
Nadim (2012) ⁵⁶	LTA	Etiology of AKI based on RIFLE classification	118	ATN group 71%	< 50% increase in serum Cr	Serum Cr
				Risk group 94%		
				Injury group 78%		
				HRS group 88%		
Sharma (2013) ¹³²	LTA	Diabetes, re-transplant, age, duration of dialysis	2112	91%	Not on dialysis, not listed for kidney transplant, not received kidney transplant after LTA	Not applicable
Levitsky (2014) ¹³¹	LTA	Biomarkers (osteopontin, tissue inhibitor of metalloproteinase-1 diabetes, age	16 test	58%	Estimated GFR > 50 ml/min	GFR estimated by MDRD-4 equation
			46 validation			
Wong (2015) ¹³³	LTA	Duration of dialysis	62	76%	HRS reversal defined as serum Cr < 1.5 mg/dL	Serum Cr

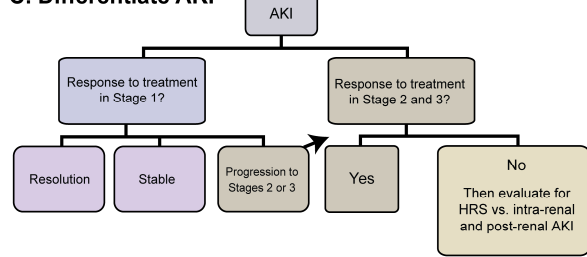
Laskey (2016) ¹²⁹	LTA	Liver graft warm ischemia time	40	65%	Not on dialysis, not listed for kidney transplant, serum Cr < 2 mg/dL after LTA	Serum Cr
---------------------------------	-----	-----------------------------------	----	-----	---	----------

DTPA=Diethylene triamine pentaacetic acid; MAG3=mercaptoacetyl triglycine

A. Diagnose AKI

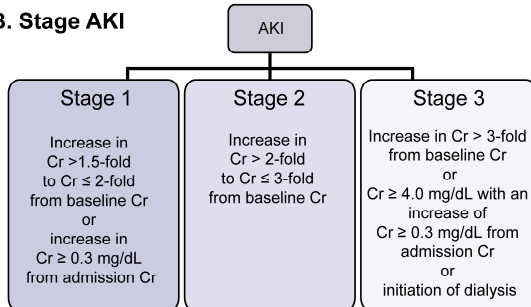


C. Differentiate AKI

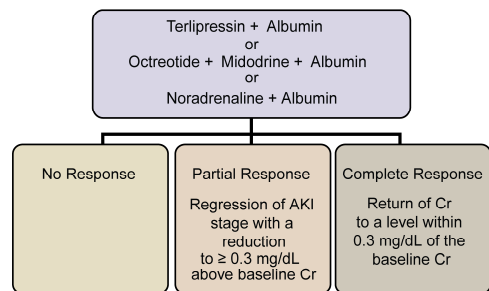


STOP diuretics, vasodilators and nephrotoxic drugs
TREAT diarrhea, infection, dehydration, GI bleeding
ADMINISTER plasma volume expansion with albumin

B. Stage AKI



D. Treat AKI-HRS and Evaluate Response to Treatment



Renal Blood Flow

