

REVIEW

Open Access



# Sepsis-induced myocardial dysfunction: pathophysiology and management

Yasuyuki Kakihana<sup>1\*</sup>, Takashi Ito<sup>1,2</sup>, Mayumi Nakahara<sup>3</sup>, Keiji Yamaguchi<sup>1</sup> and Tomotsugu Yasuda<sup>1</sup>

## Abstract

Sepsis is aggravated by an inappropriate immune response to invading microorganisms, which occasionally leads to multiple organ failure. Several lines of evidence suggest that the ventricular myocardium is depressed during sepsis with features of diastolic dysfunction. Potential candidates responsible for septic cardiomyopathy include pathogen-associated molecular patterns (PAMPs), cytokines, and nitric oxide. Extracellular histones and high-mobility group box 1 that function as endogenous damage-associated molecular patterns (DAMPs) also contribute to the myocardial dysfunction associated with sepsis. If untreated, persistent shock causes cellular injury and the liberation of further DAMPs. Like PAMPs, DAMPs have the potential to activate inflammation, creating a vicious circle. Early infection control with adequate antibiotic care is important during septic shock to decrease PAMPs arising from invasive microorganisms. Early aggressive fluid resuscitation as well as the administration of vasopressors and inotropes is also important to reduce DAMPs generated by damaged cells although excessive volume loading, and prolonged administration of catecholamines might be harmful. This review delineates some features of septic myocardial dysfunction, assesses its most common underlying mechanisms, and briefly outlines current therapeutic strategies and potential future approaches.

**Keywords:** Damage-associated molecular patterns, Immune system, Infection, Septic shock, Systemic inflammatory response syndrome

## Introduction

Sepsis has been defined by consensus as a systemic inflammatory response syndrome (SIRS) to infection [1, 2]. It is generally viewed as being aggravated by an inappropriate immune response, and it occasionally leads to multiple organ failure and shock. The pathophysiology of septic shock is thought to involve complex interactions between pathogens and a host immune system. Recent advances in the molecular biology of sepsis have shown that the host immune system recognizes infection through recognition of pathogen-associated molecular patterns (PAMPs), such as lipopolysaccharide (LPS), lipoteichoic acid, flagellin and DNA in bacteria, mannan in fungi, and single- or double-stranded RNA in viruses. These mediators bind to pattern-recognition receptors (PRRs), such as toll-like receptors (TLRs) that are expressed on the surface of host cells. These PRRs are essential for initiating host immune defenses against

invading pathogens and mediating PAMP recognition. They also serve as receptors for endogenous danger signals by identifying various damage-associated molecular patterns (DAMPs) as potent activators of the innate immune system [3–5]. The proinflammatory response induced by infection is normally balanced by anti-inflammatory cytokines. However, the normally effective inflammatory response to infection becomes systemically dysregulated during sepsis due to significantly imbalanced cytokine responses referred to as a cytokine storm. Ten TLRs have been identified in the human genome [6], and interactions between TLRs and PAMPs activate intracellular signal-transduction pathways that lead to the nuclear translocation of nuclear factor- $\kappa$ B (NF- $\kappa$ B) and the increased transcription of inflammatory mediators [7]. Among these, proinflammatory cytokines such as tumor necrosis factor- $\alpha$  (TNF- $\alpha$ ) and interleukin-1-beta (IL-1 $\beta$ ), chemokines, and lipid mediators play major roles in the inflammatory process [8]. The production of excess antimicrobial products and inflammatory mediators elicits the generation of reactive oxygen and nitrogen species, superoxide anion

\* Correspondence: kakihana@m3.kufm.kagoshima-u.ac.jp

<sup>1</sup>Department of Emergency and Intensive Care Medicine, Kagoshima University Graduate School of Medical and Dental Sciences, 8-35-1 Sakuragaoka, Kagoshima 890-8520, Japan

Full list of author information is available at the end of the article

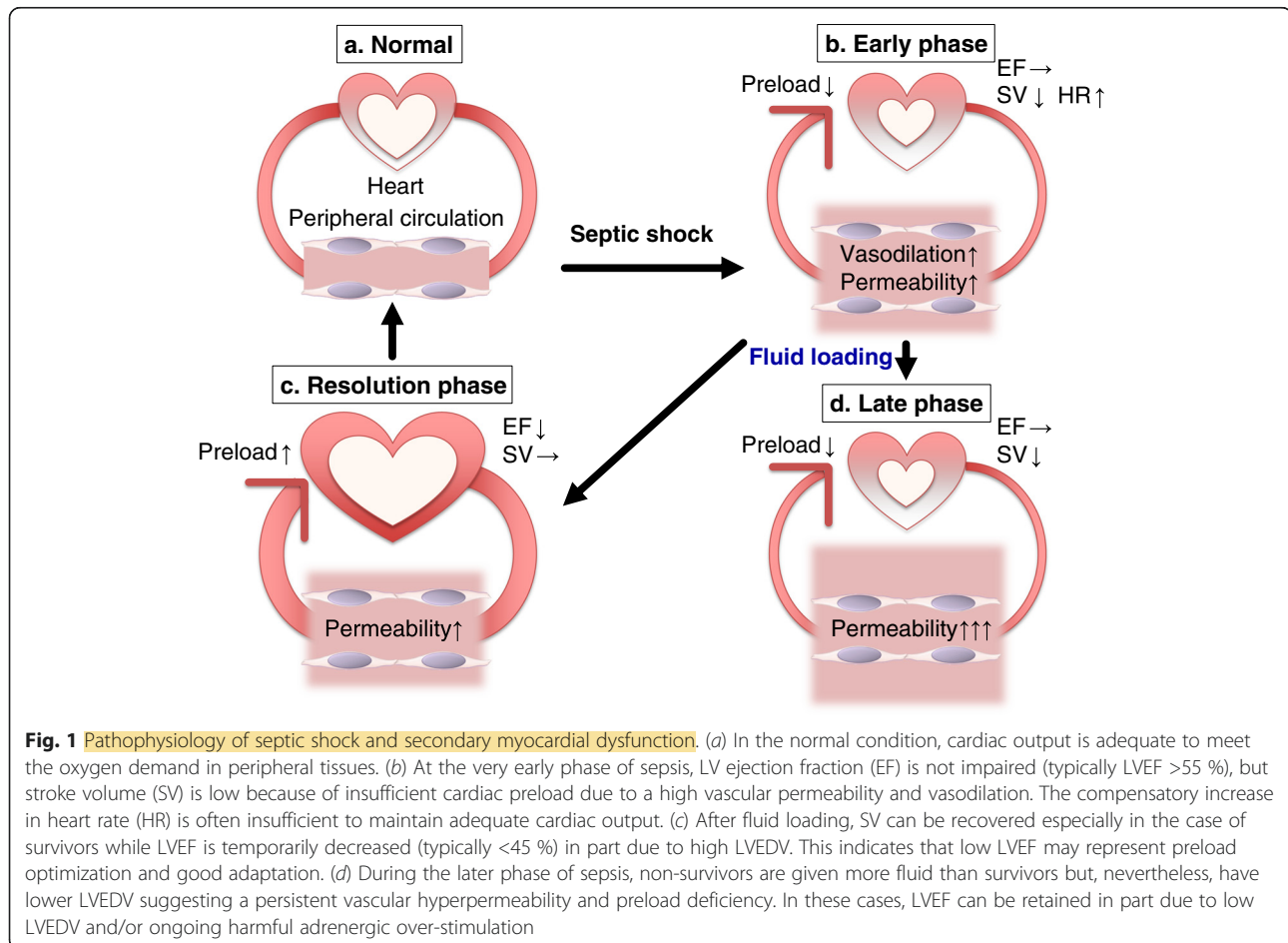
(O<sub>2</sub><sup>-</sup>), and nitric oxide (NO), causing adjacent tissue damage and an amplified inflammatory reaction [9, 10]. The DAMPs released during tissue damage include heat-shock proteins, high-mobility group box 1 (HMGB1), histones, and oxidized lipoproteins. Other cytosolic constituents such as adenosine triphosphate (ATP) and mitochondrial products, including mitochondrial DNA (mtDNA), can also contribute to the activation of innate immunity that initiates SIRS and a sepsis-like state. Excessive production of DAMPs can activate inflammation, create a vicious circle, and finally facilitate cardiac dysfunction, multiple organ failure (MOF), and death. This review describes some important features of septic myocardial dysfunction, assesses the key underlying mechanisms of cardiac dysfunction in sepsis, and briefly outlines current therapeutic strategies and potential future approaches.

## Review

### Pathophysiology of septic shock and secondary myocardial dysfunction

Septic distributive shock is a circulatory maldistribution associated with peripheral vasodilation, as well as arterial and capillary shunting. However, the pathophysiology of

septic shock comprises both warm (hyperdynamic) and cold (hypodynamic) types. The early phase of septic shock is called hyperdynamic, or warm shock, that is characterized by high cardiac output, low peripheral vascular resistance, and warm extremities (Fig. 1(a–c)). The late phase comprises concomitant hypotension followed by hypodynamic, or cold shock, with low cardiac output, poor peripheral perfusion, cool extremities (Fig. 1(d)), and finally, death [11–13]. Inadequate resuscitation, relative hypovolemia, and an increased afterload were initially thought to be the hemodynamic profile of patients with hypodynamic shock [14, 15]. Adequate volume resuscitation and the profoundly reduced systemic vascular resistance typically encountered in patients with sepsis lead to a normal or elevated cardiac index [16]. However, despite increased cardiac output and a normal stroke volume, myocardial dysfunction is significant in patients with septic shock. Notably, ejection fraction (EF) is lower and end-diastolic volume (EDV) is higher in survivors, compared to non-survivors of shock. This suggests that ventricular dilation might be a compensatory mechanism to maintain adequate cardiac output and protect against myocardial depression [17]. A recent



study of 90 patients with septic shock identified global left ventricular (LV) hypokinesia in 51 % of patients during the first 48 h of treatment [18]. They also found that patients who died had a significantly lower left ventricular ejection fraction (LVEF) and a significantly lower left ventricular end-diastolic volume (LVEDV) than those who recovered; the latter were insensitive to volume loading (Fig. 1(c, d)). Other studies of septic shock lasting 48 h have found that 24 to 44 % of patients had systolic LV dysfunction and a further 44 % had echocardiographic features of diastolic dysfunction [19–21]. These EF abnormalities are reversible, with full recovery of cardiac function at 7 to 10 days after the onset of sepsis. However, more fluids were administered during the first 24 h of intensive care, and the overall mortality rate was higher among patients with myocardial depression than in those without myocardial dysfunction [21]. Importantly, cardiovascular dysfunction in sepsis is associated with a significantly increased mortality rate of 70–90 % compared with 20 % among patients with sepsis that is not accompanied by cardiovascular impairment [22]. Myocardial edema due to inflammation-induced vascular leakage might also influence cardiac compliance and function [23, 24]. In addition, ventricular function is influenced by changes in afterload. Pulmonary hypertension will worsen right-heart function [25], whereas right-heart dilation will impair left-heart function [26]. Endothelial cells producing vasoactive molecules that regulate peripheral vascular resistance are impaired during septic shock, and thus, endothelial dysfunction plays a crucial role in its pathophysiology [27]. This is because impaired endothelium-derived NO release could alter the physiological regulation of blood flow distribution via coronary vasospasm combined with an increase in peripheral vascular resistance and the associated elevation of cardiac workload and myocardial oxygen demand.

In conclusion, despite high LVEF (typically >55 %), stroke volume at the very early phase of sepsis is low because of insufficient cardiac preload due to a high vascular permeability and vasodilation (Fig. 1(b)). The compensatory tachycardia is often insufficient to maintain adequate cardiac output during this very early phase of sepsis, as demonstrated by elevated lactate levels. After fluid loading, LVEF was markedly decreased (typically <45 %) in all patients during the first 3 days of hemodynamic support (Fig. 1(c)). However, LV systolic dysfunction is common in septic patients and potentially reversible in survivors. During the later phase of sepsis, non-survivors were given more fluid than survivors but, nevertheless, had lower LVEDV suggesting a persistent preload deficiency (Fig. 1(d)). Some studies reported more cardiac depression in sepsis survivors compared to non-survivors [17, 18]. How can such conflicting results be explained? In very severe septic patients, the presence

of profound myocardial depression defined by a low LVEF may represent preload optimization and good adaptation, while a normal LVEF could be caused by persistent preload deficiency and/or ongoing harmful adrenergic over-stimulation (Fig. 1(c, d)).

### Global ischemia and myocardial dysfunction in sepsis

Early sepsis and septic shock are characterized by circulatory abnormalities that are usually related to intravascular volume depletion and vasodilation. This potentially causes an oxygen supply–demand imbalance in various organ beds [28], and cardiac performance is likely to be reduced in insufficiently resuscitated animal models [29–31]. Therefore, earlier theories suggested that global myocardial ischemia might be responsible for myocardial dysfunction in sepsis. However, Cunnion et al. found in a study of coronary sinus catheterization that coronary flow was the same or greater in patients with septic shock compared with normal individuals. Although all of these findings reflect important changes in coronary flow and myocardial metabolism, and mirror the effects in the peripheral circulation during sepsis, evidence does not support the notion that global ischemia is an underlying cause of myocardial dysfunction in sepsis. Macrocirculatory coronary blood flow is increased in patients with established septic shock [32, 33], but cardiac microcirculation undergoes major changes during sepsis with endothelial disruption and blood flow maldistribution [34]. Heterogeneous cardiac microvascular blood flow, swollen endothelial cells, and non-occlusive intravascular fibrin depositions have been found in the hearts of dogs with endotoxemia [35, 36]. In addition, circulating neutrophils migrate into the interstitium [37]. These findings indicated that changes in the distribution of flow were localized to areas of ischemia and that this could explain the occasional appearance of elevated troponin levels associated with the severity of cardiac dysfunction [38]. However, Hotchkiss et al. [39] did not find cellular hypoxia in the hearts of rats with sepsis using the marker [ $^{18}\text{F}$ ]fluoromisonidazole. The current belief is that increases in plasma troponin are due to increased membrane permeability induced by myocardial cytokines, although this remains a matter of debate. As in the peripheral circulation, these changes could be attributed to disrupted flow autoregulation or oxygen utilization [40, 41]. Several magnetic resonance studies have identified normal levels of high-energy phosphate in the myocardium of animal models of sepsis [42, 43]. In addition, myocardial dysfunction in sepsis might reflect a hibernating myocardium [44]. The adequate  $\text{O}_2$  supply in sepsis suggests that myocardial depression is not related to tissue hypoperfusion but rather to circulating depressant factors or other mechanisms. Endothelial damage and induction of the coagulatory system also contribute to the pathophysiology of septic cardiomyopathy.

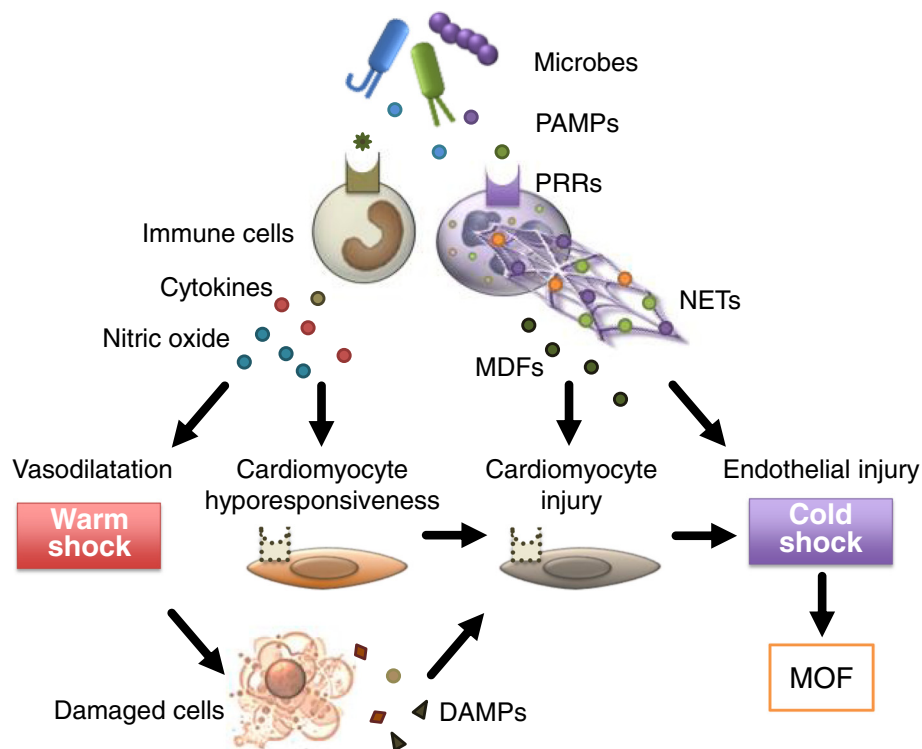
### Direct myocardial depression in sepsis

A major mechanism of direct cardiac depression in sepsis is the attenuation of the adrenergic response at the cardiomyocyte level due to down-regulation of  $\beta$ -adrenergic receptors and depression of post-receptor signaling pathways. These changes seem to be mediated by many substances, such as cytokines and nitric oxide. Another mechanism of direct cardiac depression in sepsis is cardiomyocyte injury or death, which can be induced by toxins, complements, DAMPs, and as-yet-unidentified myocardial depressants (Fig. 2).

### Myocardial depressants

Numerous bacterial toxins as well as primary, secondary, and final mediators are usually involved in the pathogenesis of systemic inflammation. A myocardial depressant factor (MDF) was discovered in an experimental animal model of hemorrhagic shock during 1947 [45]. The MDF determined in the blood of dogs during induced endotoxic shock seemed to be an 800–1000 dalton peptide that originated in the pancreas [46]. Parrillo et al. [47] quantitatively linked the clinical degree of septic myocardial dysfunction with the effect of serum from septic patients on rat cardiac myocytes during 1985; clinical severity

correlated with a decrease in the extent and velocity of myocyte shortening. These effects were notably absent when serum was applied that had been sourced from patients who were convalescing from sepsis or who were critically ill but without sepsis. Several MDFs have been identified, although the chemical composition of others remains unknown [48–50]. Nevertheless, the combination of TNF- $\alpha$  and IL-1 $\beta$  is extremely cardiodepressive [51]. Administering recombinant TNF- $\alpha$  to animal models elicits fever, lactic acidosis, hemodynamic changes, and even death. Many studies of anti-TNF- $\alpha$  antibodies in humans and other animals have found a rapid improvement in cardiovascular parameters but no decrease in mortality [52, 53]. Cytokines (TNF- $\alpha$  and IL-1 $\beta$ ) might play key roles in the early decrease in contractility, but they cannot explain the prolonged myocardial dysfunction in sepsis because the effect of TNF- $\alpha$  is maximal between 8 and 48 h after administration [54]. Both TNF- $\alpha$  and IL-1 $\beta$  induce the release of additional factors (such as NO) that in turn alter myocardial function [55, 56]. A constellation of factors rather than any individual factor might influence the onset of sepsis-induced myocardial dysfunction through the release, activation, or inhibition of other cellular mediators.



**Fig. 2** Direct myocardial depression in sepsis. A major mechanism of direct cardiac depression in sepsis is cardiomyocyte hyporesponsiveness due to down-regulation of  $\beta$ -adrenergic receptors and depression of post-receptor signaling pathways. These changes seem to be mediated by many substances, including cytokines and nitric oxide. Another mechanism of direct cardiac depression is cardiomyocyte injury or death, which can be induced by toxins, complements, damage-associated molecular patterns (DAMPs), neutrophil extracellular traps (NETs), and as-yet-unidentified myocardial depressant factors (MDFs). MOF multiple organ failure, PAMPs pathogen-associated molecular patterns, PRRs pattern recognition receptors



### **Cytokines and nitric oxide**

Both TNF- $\alpha$  and IL-1 $\beta$  are primary players in the hierarchy of proinflammatory mediator cascades [57], whereas nitric oxide (NO) [58] and oxygen-free radicals [59] are secondary effectors in the setting of SIRS cardiodepression. Sepsis leads to the expression of inducible NO synthase (iNOS) in the myocardium [60, 61] followed by high levels of NO production. This consequently contributes to myocardial dysfunction and increases total levels of sarcoplasmic reticulum Ca<sup>2+</sup> and myofilament sensitivity to Ca<sup>2+</sup> [62], partly through the generation of cytotoxic peroxynitrite from a diffusion-controlled reaction between NO and another free radical, superoxide. Sepsis-induced myocardial depression can be prevented in vitro by administering nonspecific NOS inhibitors, for example, inhibitors of guanylate cyclase such as *N*-methyl-L-arginine and methylene blue [63]. Infusing methylene blue into patients with sepsis strikingly improves mean arterial pressure, stroke volume, and left ventricular stroke work and decreases the requirement for inotropic support. Yet, the outcomes remain unaltered [64]. Conflicting results from studies of selective and nonselective iNOS inhibition indicate that constitutive NOS isoforms, such as neuronal (nNOS) and endothelial (eNOS), have potential roles in regulating cardiomyocyte homeostasis and function. These constitutive NOS isoforms may play an important role in the very early phase of myocardial depression. Myocardial eNOS in the sarcolemmal membrane produces NO that modifies L-calcium channels to inhibit calcium entry and induces myofibril relaxation, which might play an important protective role against sepsis-induced myocardial dysfunction [65, 66]. Neuronal NOS is a component of the central and peripheral nervous systems, and it is constitutively expressed in cardiac myocytes. Several studies have shown that nNOS can regulate the  $\beta$ -adrenergic receptor pathway [67]. A functional NOS that was recently identified in red blood cells (rbCNOS) regulates the deformability of erythrocyte membranes and inhibits platelet activation in sepsis [68]. Since many NOS isoforms have various modulating interactions and dose-dependent NO effects and given the precise balance among NO, superoxide, and thus peroxynitrite generated in subcellular compartments, further advances in understanding the complexity of NO biology and its derived reactive nitrogen species offer the promise of new, more specific, and effective therapeutic targets.

### **Mitochondrial dysfunction**

Since the heart is rich in mitochondria that are not only involved in energy provision but also in intracellular calcium regulation, the degree of mitochondrial dysfunction is tightly linked to sepsis-induced cardiac dysfunction and prognosis [69–71]. The activities of complexes I and II of the mitochondrial respiratory chain are diminished in

hearts from animals with sepsis [72, 73], and this might be due to the detrimental effects of sepsis mediators such as NO [74], TNF- $\alpha$ , IL-1 $\beta$  [75], and others. Mitochondrial permeability transition pores might also play a role in the development of mitochondrial dysfunction [76]. Reactive oxygen species (ROS) such as superoxide and NO suppress mitochondrial function during sepsis. This ultimately causes an increase in mitochondrial mass due to internal edema within mitochondria that is often associated with their dysfunction. One theory suggests that sepsis-induced myocardial dysfunction could represent a protective adaptation to reduced energy consumption during a state of low levels of ATP produced by dysfunctional mitochondria. This is similar to the phenomenon of the hibernating myocardium during ischemia. Recent studies have found that mitochondria generate a significant amount of DAMPs [77], including mtROS, mtDNA fragments, ATP [78, 79], and cytochrome C [80, 81]. These molecules are released from fragmented mitochondria into the circulatory system during cell death and organ damage, initiating inflammatory responses through multifactorial pathways.

### **DAMPs: histones and HMGB1**

Extracellular histones function as endogenous DAMPs that might interact with TLR2 and TLR4 on various cell types, including cardiomyocytes to reduce mitochondrial membrane potential and ATP levels. These activities cause cell damage, the dysfunction of organs including the heart, and lethality [82–84]. Extracellular histones appear to arise in a complement (C5a)-dependent fashion related to neutrophil activation that results in neutrophil extracellular traps (NETs) [85]. Exposing cardiomyocytes to histones in vitro results in obvious [Ca<sup>2+</sup>]<sub>i</sub> elevation in cardiomyocytes and a loss of homeostasis in the redox system and in [Ca<sup>2+</sup>]<sub>i</sub>, as well as defects in mitochondrial function due to increased membrane permeability [86]. We did not detect histone H3 in plasma from healthy volunteers but found significant levels in patients with sepsis and disseminated intravascular coagulation (DIC), especially in those who did not survive [87]. Alhamdi et al. [88] showed similar findings, and they also discovered that circulating histone concentrations closely correlate with elevated levels of cardiac troponin T (cTnT) in patients with sepsis, which probably contributes to septic cardiac events and mortality. They concluded that circulating histones are novel and important mediators of septic cardiomyopathy that could play prognostic and therapeutic roles.

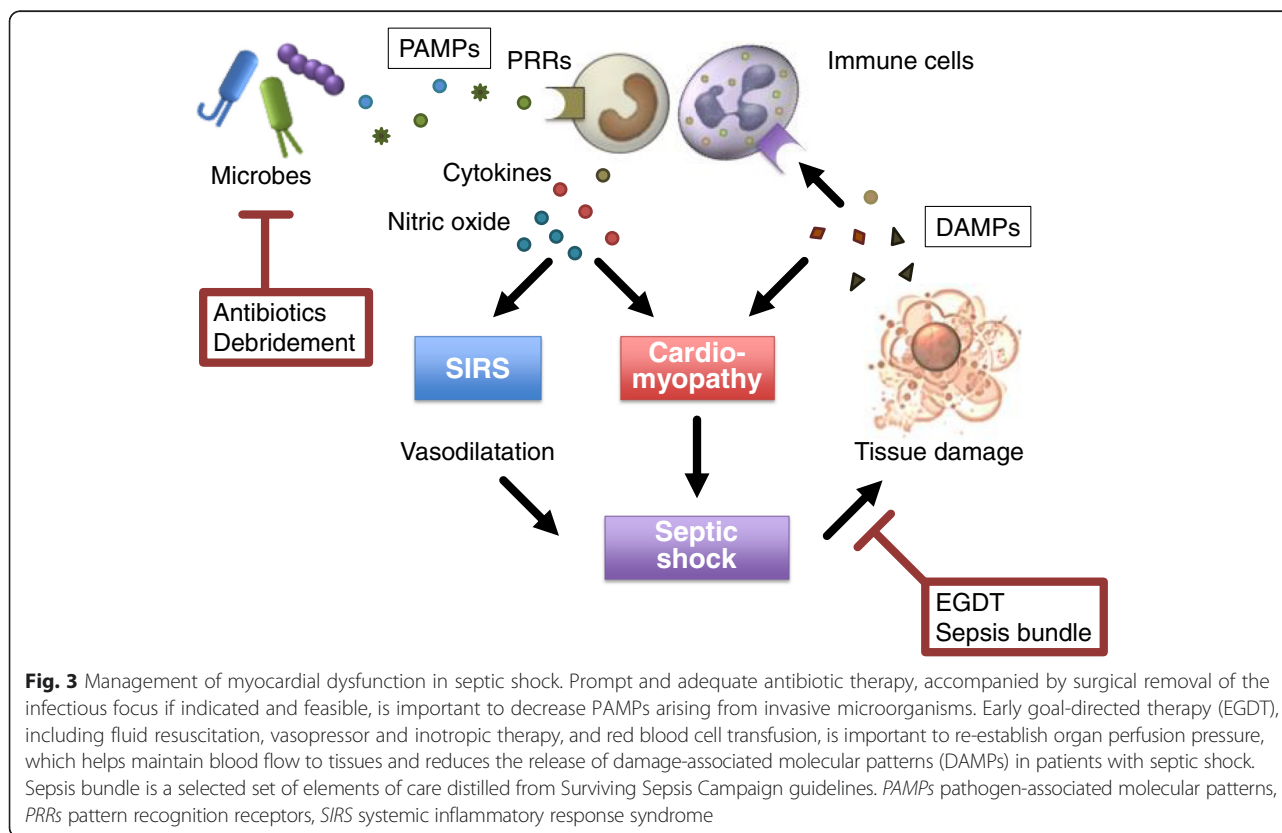
The proinflammatory mediator HMGB1 also mediates endotoxin lethality and plays an important role in the pathogenesis of cardiac dysfunction and many other diseases. Zhang et al. [89] showed that at least one mechanism underlying HMGB1-induced cardiac dysfunction is the increased level of intracellular ROS induced through

HMGB1–TLR4 interaction and consequently enhanced oxidative stress and  $\text{Ca}^{2+}$ /calmodulin-dependent protein kinase (CaMKII)-activated phosphorylation in ryanodine receptor 2 (RyR2). Furthermore, HMGB1 enhances a  $\text{Ca}^{2+}$  spark-mediated sarcoplasmic reticulum (SR)  $\text{Ca}^{2+}$  leak through the TLR4–ROS signaling pathway, which partially depletes the SR  $\text{Ca}^{2+}$  content and impairs cardiac excitation–contraction (EC) coupling. Hence, systolic  $\text{Ca}^{2+}$  transients and myocyte contractility are decreased. Inhibiting TLR4 or adding an antioxidant prevents enhancement of the SR  $\text{Ca}^{2+}$  leak, resulting in improved cardiac EC coupling. Preventing the SR  $\text{Ca}^{2+}$  leak might serve as a potential therapeutic strategy with which to treat cardiac dysfunction associated with HMGB1 overproduction. In conclusion, circulatory DAMPs (histone and/or HMGB1) directly injure myocytes or damaged myocytes release these DAMPs, resulting in myocardial dysfunction.

#### Management of myocardial dysfunction in septic shock

Prompt and adequate antibiotic therapy, accompanied by surgical removal of the infectious focus, if indicated and feasible, is the mainstay and only strictly causal line of therapy for sepsis. The optimal treatment for myocardial dysfunction includes the proper management of infection and the optimization of hemodynamic parameters. Early control of the source and monitoring hemocultures

in conjunction with early adequate antibiotic care is important to decrease PAMPs arising from invasive microorganisms (Fig. 3). Moreover, aggressive fluid replacement guided by monitoring fluid response parameters appears to be a rational strategy to remedy hypovolemia. While early and sufficient fluid administration is likely to be beneficial, excessive volume loading is harmful. The risk of pulmonary edema formation is particularly elevated due to increased permeability of the pulmonary microcirculation and LV diastolic dysfunction. Supportive therapy encompasses early and goal-directed fluid resuscitation, vasopressor and inotropic therapy, red blood cell transfusion, mechanical ventilation, and renal support when indicated. Goal-directed therapy (GDT) appears to significantly reduce overall mortality in patients with sepsis, especially when implemented within the first 6 h of admission; this is called early GDT (EGDT) [90]. Early supportive treatment is mandatory for severe sepsis and septic shock in addition to causal therapy; this is called Surviving Sepsis Campaign bundles [91]. Therefore, stabilizing arterial pressure as soon as possible is very important to re-establish organ perfusion pressure, which helps maintain blood flow to tissues and reduces the release of DAMP in patients with septic shock (Fig. 3). Norepinephrine is the vasopressor of choice when a patient is unresponsive to fluids. However, these efforts do not normalize hemodynamics in 10–20 % of patients with septic shock,



indicating a high probability that sepsis-induced myocardial dysfunction diminishes cardiac output [92]. Patients with myocardial depression will require inotropic drugs to obtain adequate tissue perfusion and improve hemodynamics, and dobutamine is the first choice recommended by the Surviving Sepsis Campaign guidelines (SSCG) 2012 [93]. After optimization of volume status, cardiac output can be increased by inotropes. While early administration of catecholamines might be necessary to reverse shock and restore adequate organ perfusion, prolonged administration, particularly at unnecessarily high doses, might be harmful and exacerbate myocardial damage. Furthermore, myocardial depression causes a poor response to  $\beta$ -adrenergics in patients with septic shock. Myocardial  $\beta$ -adrenergic receptor density is decreased in rats with sepsis [94, 95], and stimulatory G-proteins are decreased in rabbits with endotoxemia [96], whereas inhibitory G-proteins are increased in both non-survivors of septic shock and in experimental animals with sepsis [97, 98]. These changes, namely down-regulation of the  $\beta$ -adrenergic response, result in decreased adenylate cyclase activity and reduced levels of cyclic adenosine monophosphate. Barraud et al. [99] showed that the calcium-sensitizing drug levosimendan at least partially restored cardiac contraction, relaxation, and filling without altering vascular properties in a model of human sepsis with myocardial dysfunction, whereas the cyclic adenosine monophosphate (cAMP)-dependent inotropes milrinone (a phosphodiesterase 3 inhibitor) and dobutamine did not. By contrast, both milrinone and dobutamine corrected systolic impairment but did not restore diastolic function. These findings confirmed that levosimendan works as a strategic therapy targeting cardiac abnormalities in patients with sepsis. However, no definitive studies have supported levosimendan as the optimal choice of medication for patients presenting with myocardial dysfunction due to sepsis, and its application to treat such patients has not been authorized in a few countries (including Japan).

Beta-blockers can prevent ischemia, decrease oxygen demand (by reducing cardiac output up to 20 % without worsening oxygen utilization or increasing lactate levels), and decrease TNF- $\alpha$  production [100], allowing for better preservation of cardiac function. Beta-blocking agents could be beneficial because evidence suggests that beta adrenergic stress is a major factor in the pathogenesis of sepsis-induced myocardial dysfunction [101]. The ultrashort-acting beta-blocker landiolol is associated with a significant reduction in serum levels of the inflammatory mediator HMGB1 and histological lung damage [102]. Gore and Wolfe [103] showed that esmolol, another ultrashort-acting beta-blocker, could reduce the risk of myocardial ischemia without the systemic consequences of hypoperfusion in patients with sepsis. Schmittinger and

coworkers [104] found that combining milrinone with the enteral beta-blocker metoprolol maintained the cardiac index with a lower heart rate and a higher stroke volume index. Information about this issue in humans is scarce and controversy surrounds the notion that to administer a negative inotropic drug to a patient with sepsis-induced myocardial dysfunction is potentially deleterious. Recombinant thrombomodulin (rTM) has been approved for treating DIC in Japan, and it is currently undergoing a phase III clinical trial in the USA. In addition to its anticoagulant role, rTM play a role in regulating DAMPs-mediated inflammation, in part through the neutralization of extracellular histones and HMGB1 [87, 105]. However, further detailed study is required to evaluate the effectiveness of rTM against histones or HMGB1-induced myocardial dysfunction in septic shock.

## Conclusions

The pathophysiology of sepsis-induced myocardial dysfunction has not yet been defined, and topics range from patho-mechanisms to treatment. In reality, only support treatment is available for patients with sepsis and no specific drug can reverse the associated sepsis-induced myocardial dysfunction. Therefore, prompt appropriate antibiotic therapy accompanied by surgical removal of the infectious focus is very important for decreasing PAMPs, and supportive treatment comprising early aggressive fluid resuscitation with concurrent vasopressors and inotropic therapy is mandatory for septic shock. The SSCG recommend these bundle therapies, through which the initial hyper-activation of the innate immune system characterized by sepsis might be controlled. New approaches to the treatment of sepsis and a deeper understanding of its mechanisms should help improve the prognosis of patients with myocardial dysfunction in the near future.

## Abbreviations

ATP: adenosine triphosphate; CaMKII:  $\text{Ca}^{2+}$ /calmodulin-dependent protein kinase; cAMP: cyclic adenosine monophosphate; cTnT: cardiac troponin T; DAMPs: damage-associated molecular patterns; DIC: disseminated intravascular coagulation; EC: excitation-contraction; EDV: end-diastolic volume; EF: ejection fraction; EGDT: early GDT; eNOS: endothelial nitric oxide synthase; GDT: goal-directed therapy; HMGB1: high-mobility group box 1; IL-1 $\beta$ : interleukin-1-beta; iNOS: inducible NO synthase; LPS: lipopolysaccharide; LV: left ventricular; MDF: myocardial depressant factor; MOF: multiple organ failure; NF- $\kappa$ B: nuclear factor- $\kappa$ B; nNOS: neuronal nitric oxide synthase; NO: nitric oxide;  $\text{O}_2^-$ : superoxide anion; PAMPs: pathogen-associated molecular patterns; PRRs: pattern-recognition receptors; rbcNOS: red blood cells nitric oxide synthase; ROS: reactive oxygen species; rTM: recombinant thrombomodulin; RyR2: ryanodine receptor 2; SIRS: systemic inflammatory response syndrome; SR: sarcoplasmic reticulum; SSCG: Surviving Sepsis Campaign guidelines; TLRs: toll-like receptors; TNF- $\alpha$ : tumor necrosis factor-alpha.

## Competing interests

The authors declare that they have no competing interests.

## Authors' contributions

YK, TI, MN, KY, and TY participated in the conception, drafting, and revision of the manuscript. All authors have read and approved the final manuscript.

## Acknowledgements

We thank Norma Foster who is a language editor of Forte Science Communications Inc. and has made significant revision of this manuscript.

## Author details

<sup>1</sup>Department of Emergency and Intensive Care Medicine, Kagoshima University Graduate School of Medical and Dental Sciences, 8-35-1 Sakuragaoka, Kagoshima 890-8520, Japan. <sup>2</sup>Department of Systems Biology in Thromboregulation, Kagoshima University Graduate School of Medical and Dental Sciences, Kagoshima, Japan. <sup>3</sup>Department of Anesthesiology and Critical Care Medicine, Kagoshima University Graduate School of Medical and Dental Sciences, Kagoshima, Japan.

Received: 11 November 2015 Accepted: 4 March 2016

Published online: 23 March 2016

## References

- Bone RC, Balk RA, Cerra FB, Dellinger RP, Fein AM, Knaus WA, et al. Definitions for sepsis and organ failure and guidelines for the use of innovative therapies in sepsis. The ACCP/SCCM Consensus Conference Committee. American College of Chest Physicians/Society of Critical Care Medicine. *Chest*. 1992;101:1644–55.
- Anname D, Bellissant E, Cavaillon JM. Septic shock. *Lancet*. 2005;365:63–78.
- Akira S, Uematsu S, Takeuchi O. Pathogen recognition and innate immunity. *Cell*. 2006;124:783–801.
- Russell JA, Boyd J, Nakada T, Thair S, Walley KR. Molecular mechanisms of sepsis. *Contrib Microbiol*. 2011;17:48–85.
- Bianchi ME. DAMPs, PAMPs and alarmins: all we need to know about danger. *J Leukoc Biol*. 2007;81:1–5.
- Akira S, Takeda K. Toll-like receptor signalling. *Nat Rev Immunol*. 2004;4:499–511.
- Thomas JA, Haudek SB, Koroglu T, Tsen MF, Bryant DD, White DJ, et al. IRAK1 deletion disrupts cardiac Toll/IL-1 signaling and protects against contractile dysfunction. *Am J Physiol Heart Circ Physiol*. 2003;285:H597–606.
- Adib-Conquy M, Cavaillon JM. Host inflammatory and anti-inflammatory response during sepsis. *Pathol Biol (Paris)*. 2012;60:306–13.
- Soriano FG, Lorigados CB, Pacher P, Szabó C. Effects of a potent peroxynitrite decomposition catalyst in murine models of endotoxemia and sepsis. *Shock*. 2011;35:560–6.
- Torres-Dueñas D, Celes MR, Freitas A, Alves-Filho JC, Spiller F, Dal-Secco D, et al. Peroxynitrite mediates the failure of neutrophil migration in severe polymicrobial sepsis in mice. *Br J Pharmacol*. 2007;152:341–52.
- Clowes Jr GH, Vucinic M, Weidner MG. Circulatory and metabolic alterations associated with survival or death in peritonitis: clinical analysis of 25 cases. *Ann Surg*. 1966;163:866–85.
- McLean LD, Mulligan WG, McLean AP, Duff JH. Patterns of septic shock in man—a detailed study of 56 patients. *Ann Surg*. 1967;166:543–62.
- Wilson RF, Chiscano AD, Quadros E, Tarver M. Some observations on 132 patients with septic shock. *Anesth Analg*. 1967;46:751–63.
- Abraham E, Shoemaker WC, Bland RD, Cobo JC. Sequential cardiorespiratory patterns in septic shock. *Crit Care Med*. 1983;11:799–803.
- Wilson RF, Sarver EJ, LeBlanc PL. Factors affecting hemodynamics in clinical shock with sepsis. *Ann Surg*. 1971;174:939–43.
- Bone RC. Gram-negative sepsis. Background, clinical features, and intervention. *Chest*. 1991;100:802–8.
- Parker MM, Shelhamer JH, Bacharach SL, Green MV, Natanson C, Frederick TM, et al. Profound but reversible myocardial depression in patients with septic shock. *Ann Intern Med*. 1984;100:483–90.
- Jardin F, Fourme T, Page B, Loubières Y, Vieillard-Baron A, Beauchet A, et al. Persistent preload defect in severe sepsis despite fluid loading: a longitudinal echocardiographic study in patients with septic shock. *Chest*. 1999;116:1354–9.
- Morelli A, De Castro S, Teboul JL, Singer M, Rocco M, Conti G, et al. Effects of levosimendan on systemic and regional hemodynamics in septic myocardial depression. *Intensive Care Med*. 2005;31:638–44.
- Poelaert J, Declercq C, Vogelaers D, Colardyn F, Visser CA. Left ventricular systolic and diastolic function in septic shock. *Intensive Care Med*. 1997;23:553–60.
- Charpentier J, Luyt CE, Fulla Y, Vinsonneau C, Cariou A, Grabar S, et al. Brain natriuretic peptide: a marker of myocardial dysfunction and prognosis during severe sepsis. *Crit Care Med*. 2004;32:660–5.
- Parrillo JE, Parker MM, Natanson C, Suffredini AF, Danner RL, Cunnion RE, et al. Septic shock in humans. Advances in the understanding of pathogenesis, cardiovascular dysfunction, and therapy. *Ann Intern Med*. 1990;113:227–42.
- Chagnon F, Bentourkia M, Lecomte R, Lessard M, Lesur O. Endotoxin-induced heart dysfunction in rats: assessment of myocardial perfusion and permeability and the role of fluid resuscitation. *Crit Care Med*. 2006;34:127–33.
- Yu P, Boughner DR, Sibbald WJ, Keys J, Dunmore J, Martin CM. Myocardial collagen changes and edema in rats with hyperdynamic sepsis. *Crit Care Med*. 1997;25:657–62.
- Cohen RI, Shapir Y, Chen L, Scharf SM. Right ventricular overload causes the decrease in cardiac output after nitric oxide synthesis inhibition in endotoxemia. *Crit Care Med*. 1998;26:738–47.
- Moore TD, Frenneaux MP, Sas R, Atherton JJ, Morris-Thurgood JA, Smith ER, et al. Ventricular interaction and external constraint account for decreased stroke work during volume loading in CHF. *Am J Physiol Heart Circ Physiol*. 2001;281:H2385–91.
- Cotran RS, Pober JS. Cytokine-endothelial interactions in inflammation, immunity, and vascular injury. *J Am Soc Nephrol*. 1990;1:225–35.
- Hotchkiss RS, Karl IE. Reevaluation of the role of cellular hypoxia and bioenergetic failure in sepsis. *JAMA*. 1992;267:1503–10.
- Hinshaw LB, Archer LT, Spitzer JJ, Black MR, Peyton MD, Greenfield LJ. Effects of coronary hypotension and endotoxin on myocardial performance. *Am J Physiol*. 1974;227:1051–7.
- Coalson JJ, Hinshaw LB, Guenter CA, Berrell EL, Greenfield LJ. Pathophysiologic responses of the subhuman primate in experimental septic shock. *Lab Invest*. 1975;32:561–9.
- Schlag G, Redl H, Hallström S, Radmore K, Davies J. Hyperdynamic sepsis in baboons. I. Aspects of hemodynamics. *Circ Shock*. 1991;34:311–8.
- Cunnion RE, Schaer GL, Parker MM, Natanson C, Parrillo JE. The coronary circulation in human septic shock. *Circulation*. 1986;73:637–44.
- Dhainaut JF, Huyghebaert MF, Monsallier JF, Lefevre G, Dall'Ava-Santucci J, Brunet F, et al. Coronary hemodynamics and myocardial metabolism of lactate, free fatty acids, glucose, and ketones in patients with septic shock. *Circulation*. 1987;75:533–41.
- Hinshaw LB. Sepsis/septic shock: participation of the microcirculation: an abbreviated review. *Crit Care Med*. 1996;24:1072–8.
- Groeneveld AB, van Lambalgen AA, van den Bos GC, Bronsveld W, Nauta JJ, Thijs LG. Maldistribution of heterogeneous coronary blood flow during canine endotoxin shock. *Cardiovasc Res*. 1991;25:80–8.
- Madorin WS, Rui T, Sugimoto N, Handa O, Cepinskas G, Kvietys PR. Cardiac myocytes activated by septic plasma promote neutrophil transendothelial migration: role of platelet-activating factor and the chemokines LIX and KC. *Circ Res*. 2004;94:944–51.
- ver Elst KM, Spapen HD, Nguyen DN, Garbar C, Huyghens LP, Goris FK. Cardiac troponins I and T are biological markers of left ventricular dysfunction in septic shock. *Clin Chem*. 2000;46:650–7.
- Wu AH. Increased troponin in patients with sepsis and septic shock: myocardial necrosis or reversible myocardial depression? *Intensive Care Med*. 2001;27:959–61.
- Hotchkiss RS, Rust RS, Dence CS, Wasserman TH, Song SK, Hwang DR, et al. Evaluation of the role of cellular hypoxia in sepsis by the hypoxic marker [18F]fluoromisonidazole. *Am J Physiol*. 1991;261:R965–72.
- Herbertson MJ, Werner HA, Russell JA, Iversen K, Walley KR. Myocardial oxygen extraction ratio is decreased during endotoxemia in pigs. *J Appl Physiol* (1985). 1995;79:479–86.
- Powell RJ, Machiedo GW, Rush Jr BF, Dikdan G. Oxygen free radicals: effect on red cell deformability in sepsis. *Crit Care Med*. 1991;19:732–5.
- Solomon MA, Correa R, Alexander HR, Koev LA, Cobb JP, Kim DK, et al. Myocardial energy metabolism and morphology in a canine model of sepsis. *Am J Physiol*. 1994;266:H757–68.
- Van Lambalgen AA, van Kraats AA, Mulder MF, Teerlink T, van den Bos GC. High-energy phosphates in heart, liver, kidney, and skeletal muscle of endotoxemic rats. *Am J Physiol*. 1994;266:H1581–7.
- Levy RJ, Piel DA, Acton PD, Zhou R, Ferrari VA, Karp JS, et al. Evidence of myocardial hibernation in the septic heart. *Crit Care Med*. 2005;33:2752–6.
- Wiggers CJ. Myocardial depression in shock; a survey of cardiodynamic studies. *Am Heart J*. 1947;33:633–50.
- Lefer AM, Martin J. Origin of myocardial depressant factor in shock. *Am J Physiol*. 1970;218:1423–7.
- Parrillo JE, Burch C, Shelhamer JH, Parker MM, Natanson C, Schuette W. A circulating myocardial depressant substance in humans with septic shock.



- Septic shock patients with a reduced ejection fraction have a circulating factor that depresses in vitro myocardial cell performance. *J Clin Invest.* 1985;76:1539–53.
48. Hallström S, Koidl B, Müller U, Werdan K, Schlag G. A cardiodepressant factor isolated from blood blocks  $\text{Ca}^{2+}$  current in cardiomyocytes. *Am J Physiol.* 1991;260:H869–76.
  49. Hoffmann JN, Werdan K, Hartl WH, Jochum M, Faist E, Inthorn D. Hemofiltrate from patients with severe sepsis and depressed left ventricular contractility contains cardiotoxic compounds. *Shock.* 1999;12:174–80.
  50. Pathan N, Sandiford C, Harding SE, Levin M. Characterization of a myocardial depressant factor in meningococcal septicemia. *Crit Care Med.* 2002;30:2191–8.
  51. Kumar A, Thota V, Dee L, Olson J, Uretz E, Parrillo JE. Tumor necrosis factor alpha and interleukin 1beta are responsible for in vitro myocardial cell depression induced by human septic shock serum. *J Exp Med.* 1996;183:949–58.
  52. Vincent JL, Bakker J, Marécaux G, Schandene L, Kahn RJ, Dupont E. Administration of anti-TNF antibody improves left ventricular function in septic shock patients. Results of a pilot study. *Chest.* 1992;101:810–5.
  53. Abraham E, Wunderink R, Silverman H, Perl TM, Nasraway S, Levy H, et al. Efficacy and safety of monoclonal antibody to human tumor necrosis factor alpha in patients with sepsis syndrome. A randomized, controlled, double-blind, multicenter clinical trial. TNF-alpha MAB Sepsis Study Group. *JAMA.* 1995;273:934–41.
  54. Natanson C, Eichenholz PW, Danner RL, Eichacker PQ, Hoffman WD, Kuo GC, et al. Endotoxin and tumor necrosis factor challenges in dogs simulate the cardiovascular profile of human septic shock. *J Exp Med.* 1989;169:823–32.
  55. Schulz R, Nava E, Moncada S. Induction and potential biological relevance of a  $\text{Ca}^{2+}$ -independent nitric oxide synthase in the myocardium. *Br J Pharmacol.* 1992;105:575–80.
  56. Finkel MS, Oddis CV, Jacob TD, Watkins SC, Hattler BG, Simmons RL. Negative inotropic effects of cytokines on the heart mediated by nitric oxide. *Science.* 1992;257:387–9.
  57. Loppnow H, Werdan K, Reuter G, Flad HD. The interleukin-1 and interleukin-1 converting enzyme families in the cardiovascular system. *Eur Cytokine Netw.* 1998;9:675–80.
  58. Kelly RA, Balligand JL, Smith TW. Nitric oxide and cardiac function. *Circ Res.* 1996;79:363–80.
  59. Singal PK, Khaper N, Palace V, Kumar D. The role of oxidative stress in the genesis of heart disease. *Cardiovasc Res.* 1998;40:426–32.
  60. Preiser JC, Zhang H, Vray B, Hrabak A, Vincent JL. Time course of inducible nitric oxide synthase activity following endotoxin administration in dogs. *Nitric Oxide.* 2001;5:208–11.
  61. Khadour FH, Panas D, Ferdinandy P, Schulz C, Csont T, Lalu MM, et al. Enhanced NO and superoxide generation in dysfunctional hearts from endotoxemic rats. *Am J Physiol Heart Circ Physiol.* 2002;283:H1108–15.
  62. Ichinose F, Buys ES, Neilan LG, Furutani EM, Morgan JG, Jassal DS, et al. Cardiomyocyte-specific overexpression of nitric oxide synthase 3 prevents myocardial dysfunction in murine models of septic shock. *Circ Res.* 2007;100:130–9.
  63. Kumar A, Brar R, Wang P, Dee L, Skorupa G, Khadour F, Schulz R, et al. Role of nitric oxide and cGMP in human septic serum-induced depression of cardiac myocyte contractility. *Am J Physiol.* 1999;276:R265–76.
  64. Kirov MY, Evgenov OV, Evgenov NV, Egorina EM, Sovershaev MA, Sveinbjørnsson B, et al. Infusion of methylene blue in human septic shock: a pilot, randomized, controlled study. *Crit Care Med.* 2001;29:1860–7.
  65. Ichinose F, Hataishi R, Wu JC, Kawai N, Rodrigues AC, Mallari C, et al. A selective inducible NOS dimerization inhibitor prevents systemic, cardiac, and pulmonary hemodynamic dysfunction in endotoxemic mice. *Am J Physiol Heart Circ Physiol.* 2003;285:H2524–30.
  66. Bougaki M, Searles RJ, Kida K, Yu J, Buys ES, Ichinose F. Nos3 protects against systemic inflammation and myocardial dysfunction in murine polymicrobial sepsis. *Shock.* 2010;34:281–90.
  67. Dawson D, Lygate CA, Zhang MH, Hulbert K, Neubauer S, Casadei B. nNOS gene deletion exacerbates pathological left ventricular remodeling and functional deterioration after myocardial infarction. *Circulation.* 2005;112:3729–37.
  68. Kleinbongard P, Schulz R, Rassaf T, Lauer T, Dejam A, Jax T, et al. Red blood cells express a functional endothelial nitric oxide synthase. *Blood.* 2006;107:2943–51.
  69. Brealey D, Brand M, Hargreaves I, Heales S, Land J, Smolenski R, et al. Association between mitochondrial dysfunction and severity and outcome of septic shock. *Lancet.* 2002;360:219–23.
  70. Suliman HB, Welty-Wolf KE, Carraway M, Tatro L, Piantadosi CA. Lipopolysaccharide induces oxidative cardiac mitochondrial damage and biogenesis. *Cardiovasc Res.* 2004;64:279–88.
  71. Levy RJ, Vijayarathay C, Raj NR, Avadhani NG, Deutschman CS. Competitive and noncompetitive inhibition of myocardial cytochrome C oxidase in sepsis. *Shock.* 2004;21:110–4.
  72. Trumbeckaite S, Opalka JR, Neuhofer C, Zierz S, Gellerich FN. Different sensitivity of rabbit heart and skeletal muscle to endotoxin-induced impairment of mitochondrial function. *Eur J Biochem.* 2001;268:1422–9.
  73. Gellerich FN, Trumbeckaite S, Hertel K, Zierz S, Müller-Werdan U, Werdan K, Redl H, et al. Impaired energy metabolism in hearts of septic baboons: diminished activities of complex I and complex II of the mitochondrial respiratory chain. *Shock.* 1999;11:336–41.
  74. Kelm M, Schäfer S, Dahmann R, Dolu B, Perings S, Decking UK, et al. Nitric oxide induced contractile dysfunction is related to a reduction in myocardial energy generation. *Cardiovasc Res.* 1997;36:185–94.
  75. Zell R, Geck P, Werdan K, Boekstegers P. TNF-alpha and IL-1 alpha inhibit both pyruvate dehydrogenase activity and mitochondrial function in cardiomyocytes: evidence for primary impairment of mitochondrial function. *Mol Cell Biochem.* 1997;177:61–7.
  76. Larche J, Lancel S, Hassoun SM, Favory R, Decoster B, Marchetti P, et al. Inhibition of mitochondrial permeability transition prevents sepsis-induced myocardial dysfunction and mortality. *J Am Coll Cardiol.* 2006;48:377–85.
  77. Zhang Q, Raoof M, Chen Y, Sumi Y, Sursal T, Junger W, et al. Circulating mitochondrial DAMPs cause inflammatory responses to injury. *Nature.* 2010;464:104–7.
  78. Ghiringhelli F, Apetoh L, Tesniere A, Aymeric L, Ma Y, Ortiz C, et al. Activation of the NLRP3 inflammasome in dendritic cells induces IL-1beta-dependent adaptive immunity against tumors. *Nat Med.* 2009;15:1170–8.
  79. Iyer SS, Pulsikens WP, Sadler JJ, Butter LM, Teske GJ, Ulland TK, et al. Necrotic cells trigger a sterile inflammatory response through the Nlrp3 inflammasome. *Proc Natl Acad Sci U S A.* 2009;106:20388–93.
  80. Codina R, Vanasse A, Kelekar A, Vezys V, Jemerson R. Cytochrome c-induced lymphocyte death from the outside in: inhibition by serum leucine-rich alpha-2-glycoprotein-1. *Apoptosis.* 2010;15:139–52.
  81. Pullerits R, Bokarewa M, Jonsson IM, Verdreng M, Tarkowski A. Extracellular cytochrome c, a mitochondrial apoptosis-related protein, induces arthritis. *Rheumatology (Oxford).* 2005;44:32–9.
  82. Hassoun SM, Marechal X, Montaigne D, Bouazza Y, Decoster B, Lancel S, et al. Prevention of endotoxin-induced sarcoplasmic reticulum calcium leak improves mitochondrial and myocardial dysfunction. *Crit Care Med.* 2008;36:2590–6.
  83. Minamikawa T, Sriravana A, Williams DA, Bowser DN, Hill JS, Nagley P. Chloromethyl-X-rosamine (MitoTracker Red) photosensitises mitochondria and induces apoptosis in intact human cells. *J Cell Sci.* 1999;112:2419–30.
  84. Knowlton AA, Chen L, Malik ZA. Heart failure and mitochondrial dysfunction: the role of mitochondrial fission/fusion abnormalities and new therapeutic strategies. *J Cardiovasc Pharmacol.* 2014;63:196–206.
  85. Kalbitz M, Grailer JJ, Fattahi F, Jajou L, Herron TJ, Campbell KF, et al. Role of extracellular histones in the cardiomyopathy of sepsis. *FASEB J.* 2015;29:2185–93.
  86. Kleine TJ, Gladfelter A, Lewis PN, Lewis SA. Histone-induced damage of a mammalian epithelium: the conductive effect. *Am J Physiol.* 1995;268:C1114–25.
  87. Nakahara M, Ito T, Kawahara K, Yamamoto M, Nagasato T, Shrestha B, et al. Recombinant thrombomodulin protects mice against histone-induced lethal thromboembolism. *PLoS One.* 2013;8, e75961.
  88. Alhamdi Y, Abrams ST, Cheng Z, Jing S, Su D, Liu Z, et al. Circulating histones are major mediators of cardiac injury in patients with sepsis. *Crit Care Med.* 2015;43:2094–103.
  89. Zhang C, Mo M, Ding W, Liu W, Yan D, Deng J, et al. High-mobility group box 1 (HMGB1) impaired cardiac excitation-contraction coupling by enhancing the sarcoplasmic reticulum (SR)  $\text{Ca}^{2+}$  leak through TLR4-ROS signaling in cardiomyocytes. *J Mol Cell Cardiol.* 2014;74:260–73.
  90. Rivers E, Nguyen B, Havstad S, Ressler J, Muzzin A, Knoblich B, et al. Early goal-directed therapy in the treatment of severe sepsis and septic shock. *N Engl J Med.* 2001;345:1368–77.
  91. <http://www.survivingsepsis.org/bundles/Pages/default.aspx>. Accessed 16 3 2015.
  92. Romero-Bermejo FJ, Ruiz-Bailen M, Gil-Cebrian J, Huertos-Ranchal MJ. Sepsis-induced cardiomyopathy. *Curr Cardiol Rev.* 2011;7:163–83.
  93. Dellinger RP, Levy MM, Rhodes A, Annane D, Gerlach H, Opal SM, et al. Surviving sepsis campaign: international guidelines for management of severe sepsis and septic shock: 2012. *Crit Care Med.* 2013;41:580–637.

94. Tang C, Liu MS. Initial externalization followed by internalization of beta-adrenergic receptors in rat heart during sepsis. *Am J Physiol.* 1996;270:R254–63.
95. Shepherd RE, Lang CH, McDonough KH. Myocardial adrenergic responsiveness after lethal and nonlethal doses of endotoxin. *Am J Physiol.* 1987;252:H410–6.
96. Matsuda N, Hattori Y, Akaishi Y, Suzuki Y, Kemmotsu O, Gando S. Impairment of cardiac beta-adrenoceptor cellular signaling by decreased expression of G(s alpha) in septic rabbits. *Anesthesiology.* 2000;93:1465–73.
97. Böhm M, Kirchmayr R, Gierschik P, Erdmann E. Increase of myocardial inhibitory G-proteins in catecholamine-refractory septic shock or in septic multiorgan failure. *Am J Med.* 1995;98:183–6.
98. Wu LL, Yang SL, Yang RC, Hsu HK, Hsu C, Dong LW, et al. G protein and adenylate cyclase complex-mediated signal transduction in the rat heart during sepsis. *Shock.* 2003;19:533–7.
99. Barraud D, Faivre V, Damy T, Welschbillig S, Gayat E, Heymes C, et al. Levosimendan restores both systolic and diastolic cardiac performance in lipopolysaccharide-treated rabbits: comparison with dobutamine and milrinone. *Crit Care Med.* 2007;35:1376–82.
100. Suzuki T, Morisaki H, Serita R, et al. Infusion of beta-adrenergic blocker esmolol attenuates myocardial dysfunction in septic rats. *Crit Care Med.* 2005;33:2294–301.
101. Piper RD, Li FY, Myers ML, Sibbald WJ. Effects of isoproterenol on myocardial structure and function in septic rats. *J Appl Physiol* (1985). 1999;86:993–1001.
102. Hagiwara S, Iwasaka H, Maeda H, Noguchi T. Landiolol, an ultrashort-acting beta1-adrenoceptor antagonist, has protective effects in an LPS-induced systemic inflammation model. *Shock.* 2009;31:515–20.
103. Gore DC, Wolfe RR. Hemodynamic and metabolic effects of selective beta1 adrenergic blockade during sepsis. *Surgery.* 2006;139:686–94.
104. Schmittinger CA, Dünser MW, Haller M, Ulmer H, Luckner G, Torgersen C, et al. Combined milrinone and enteral metoprolol therapy in patients with septic myocardial depression. *Crit Care.* 2008;12:R99.
105. Ito T, Kawahara K, Okamoto K, Yamada S, Yasuda M, Imaizumi H, et al. Proteolytic cleavage of high mobility group box 1 protein by thrombin-thrombomodulin complexes. *Arterioscler Thromb Vasc Biol.* 2008;28:1825–30.

Submit your next manuscript to BioMed Central and we will help you at every step:

- We accept pre-submission inquiries
- Our selector tool helps you to find the most relevant journal
- We provide round the clock customer support
- Convenient online submission
- Thorough peer review
- Inclusion in PubMed and all major indexing services
- Maximum visibility for your research

Submit your manuscript at  
[www.biomedcentral.com/submit](http://www.biomedcentral.com/submit)

