

Assessing the Value of Intensive Care

Ian J. Barbash, MD; Jeremy M. Kahn, MD, MS

Despite ongoing reform efforts, spending on hospital care in the United States remains an intractable problem.¹ One strategy to lower hospital spending may be to reduce the number of intensive care unit (ICU) admissions, particularly for patients with illness of low severity who are admitted for



Related article page 1272

observation rather than life-threatening organ failure.² Spending on hospital admissions involving intensive care accounts for nearly half of all hospital costs,³ making ICU admissions an important focus for reducing overall expenditures. At the same time, there is **good evidence that intensive care is overused**. Hospitals vary widely in their use of the ICU without apparent differences in mortality,⁴ and **transient reductions in the availability of ICU beds leads to fewer ICU admissions without apparent harm to patients**.⁵ These data imply that ICU admissions for **discretionary patients, patients for whom it is not clear whether they would benefit more from ICU care** or from care in the general hospital **ward**, represent “low-value” health care—something to reduce if not eliminate all together. The usual prescriptions toward that end range from **expanding the use of guidelines for ICU triage**⁶ to forcing more judicious use by **reducing the availability of ICU beds**.⁷

In this issue of *JAMA*, Valley and colleagues⁸ **challenge** this conventional wisdom by demonstrating a **tangible benefit of ICU admission** for a cohort of **low-risk** patients. The authors examined more than 1 million Medicare beneficiaries admitted to the hospital with pneumonia, and compared 30-day mortality between patients admitted to the ICU and patients admitted solely to the hospital ward. To account for the selection bias inherent in this comparison they used an instrumental variable approach. Instrumental variables are an econometric technique for obtaining unbiased estimates of treatment effect in observational data.⁹ They exploit factors that are causally associated with treatment but not related to the outcome. Here the authors used an instrumental variable based on differential distance—the difference between (1) the patient’s home and the nearest hospital with high ICU admission rates and (2) the patient’s home and the nearest hospital. As shown in the Supplement to the article by Valley et al, this factor is strongly associated with ICU admission but is not associated without outcome except through ICU admission, meeting the criteria for a valid instrument.

The study found that, in the instrumental variable analysis, admission to an ICU for patients with pneumonia whose **need for ICU admission was borderline or discretionary** was associated with a **5.7% absolute reduction in 30-day mortality, 14.8% for ICU admission vs 20.5% for general ward admission**, compared with admission solely to a hospital ward. Ad-

ditionally, there were **no** statistically significant **differences** in total **costs** or total Medicare payments between groups, suggesting that ICU admission can save lives for lower-risk patients, and can do so at similar cost. If these results are valid, ICU admission for discretionary patients’ with pneumonia is the opposite of low-value care. It is high-value care, worth expanding rather than reducing.

Before interpreting these results, it is important to consider to whom the analysis applies. Instrumental variable analyses **only apply** to the so-called “**marginal**” **patient**—in this study, patients for whom ICU admission is dependent upon their proximity to a hospital with a high rate of ICU utilization. This population is theoretical and cannot be explicitly defined. Intuitively, these patients should not have an obvious need for ICU admission (ie, shock or respiratory failure), but should be at sufficient risk for deterioration that they may benefit from careful monitoring and early intervention. However, the data in the report by Valley et al cannot reveal exactly who these patients are, or even how large the population may be. Using a standard approach, the authors estimated that this population may represent 13% of their cohort, or potentially 48 000 Medicare beneficiaries per year. However, this estimate depends on the authors’ somewhat arbitrary definition of a hospital with high ICU admission rates, which they set at the top 40% of hospitals, corresponding to an ICU admission rate for patients with pneumonia of greater than 32%. The definition of a hospital with high ICU admission rates might plausibly vary based on any number of reasons, and thus the true marginal population could be either much bigger or much smaller. Thus it is not clear exactly how many lives might be saved by extending ICU admission to more discretionary patients.

In addition to the caveats about **generalizability**, several other limitations are worth noting. First, admission to the ICU may just be a proxy for individual or institutional commitment to full life support. Because this factor would be associated with both the instrument and with mortality, it would make ICU admission appear more beneficial than it really is.¹⁰ Second, because the analysis was limited to fee-for-service Medicare beneficiaries, it is uncertain whether the results extend to other types of patients. Third, the finding that ICU admission was not associated with increased costs may understate true cost savings that might be achieved through avoiding ICU admissions. Most ICU costs are attributable to a fixed overhead rather than individual patient care, and are therefore not dependent on individual patient admissions.¹¹ Thus, avoiding ICU admission might not be expected to reduce per-patient costs. Instead, cost savings would be achieved over the long-term as ICUs decrease in size and the fixed costs de-

crease, saving money for all hospitalizations, not just those for patients admitted to the ICU.

Even with these limitations, this study provides important empirical evidence that ICU admission can benefit low-risk patients. The exact mechanism of this benefit is unknown, but there are several plausible candidate explanations. It is possible that low nurse-to-patient ratios and dedicated inter-professional care teams may prevent clinical deterioration or mitigate the effects of adverse events.^{12,13} Intensivist physicians might be functioning as de facto hospitalists, improving outcomes through greater clinical experience.¹⁴ Intensive monitoring in ICUs may lead to more timely and accurate decision making by physicians, nurses, and other ICU personnel.¹⁵ Regardless of mechanism, this study makes clear that the value of intensive care extends beyond mere life support for the acutely failing organ and instead includes the entirety the organizational and human resources that make up the ICU.

However, this study does not provide carte blanche approval to further increase the size of our ICUs and admit even more patients to intensive care. Although it is tempting to use these results as a rationale for more liberal ICU admission strategies, to do so would be untenable in an era of constrained health care resources. The United States already has more ICU beds per capita than nearly every other nation, and arguably

spends far too much of health care resources on ICU care and hospital care. Rather than increase use of the ICU, further research is warranted into discovering the reasons ICU care seemed to help patients with borderline criteria for ICU admission, and how to extend this benefit to patients outside the ICU, either through enhanced inter-professional care, improved monitoring, or treatment protocols to guide clinical decision making. The desired outcome would be to develop strategies to make hospital wards function more like ICUs, without turning hospital wards into ICUs.

Yet the findings reported by Valley et al argue against active efforts to reduce ICU admissions through triage guidelines or bed supply reductions, at least for older patients with pneumonia. In the current health care system, more judicious use of the ICU may well lead to higher mortality in some patient populations. Indeed, the greatest lesson from this study may be that low-value health care is difficult to find. Reducing health care spending by preventing ICU readmissions will require addressing the difficult questions about rationing ICU care and the degree to which the nation can afford to make intensive care available to anyone at any time. While this conversation is underway, the task at hand is to study why the intensive care saves lives, and then use this information to make hospital care as safe and effective for all patients, regardless of where in the hospital they receive care.

ARTICLE INFORMATION

Author Affiliations: Division of Pulmonary, Allergy, and Critical Care Medicine, University of Pittsburgh School of Medicine, Pittsburgh, Pennsylvania (Barbash); Clinical Research, Investigation, and Systems Modeling of Acute Illness Center, Department of Critical Care Medicine, University of Pittsburgh School of Medicine, Pittsburgh, Pennsylvania (Barbash, Kahn); Department of Health Policy and Management, University of Pittsburgh Graduate School of Public Health, Pittsburgh, Pennsylvania (Kahn).

Corresponding Author: Jeremy M. Kahn, MD, MS, Departments of Critical Care Medicine and Health Policy and Management, University of Pittsburgh, Scaife Hall Room 602-B, 3550 Terrace St, Pittsburgh, PA 15221 (kahnjm@upmc.edu).

Conflict of Interest Disclosures: Both authors have completed and submitted the ICMJE Form for Disclosure of Potential Conflicts of Interest and none were reported.

REFERENCES

1. Keehan SP, Cuckler GA, Sisko AM, et al. National Health Expenditure Projections, 2014-24: Spending Growth Faster Than Recent Trends. *Health Aff (Millwood)*. 2015;34(8):1407-1417.
2. Zimmerman JE, Kramer AA. A model for identifying patients who may not need intensive care unit admission. *J Crit Care*. 2010;25(2):205-213.
3. Barrett ML, Smith MW, Elixhauser A, Honigman LS, Pines JM. *Utilization of Intensive Care Services, 2011*. Rockville, MD: Agency for Healthcare Research and Quality; 2014.
4. Chen LM, Render M, Sales A, Kennedy EH, Wiitala W, Hofer TP. Intensive care unit admitting patterns in the Veterans Affairs health care system. *Arch Intern Med*. 2012;172(16):1220-1226.
5. Gooch RA, Kahn JM. ICU bed supply, utilization, and health care spending: an example of demand elasticity. *JAMA*. 2014;311(6):567-568.
6. Sprung CL, Danis M, Iapichino G, et al. Triage of intensive care patients: identifying agreement and controversy. *Intensive Care Med*. 2013;39(11):1916-1924.
7. Kahn JM, Rubenfeld GD. The myth of the workforce crisis: why the United States does not need more intensivist physicians. *Am J Respir Crit Care Med*. 2015;191(2):128-134.
8. Valley TS, Sjoding MW, Ryan AM, Iwashyna TJ, Cooke CR. Association of intensive care unit admission with mortality among older patients with pneumonia. *JAMA*. doi:10.1001/jama.2015.11068.
9. Stukel TA, Fisher ES, Wennberg DE, Alter DA, Gottlieb DJ, Vermeulen MJ. Analysis of observational studies in the presence of treatment selection bias: effects of invasive cardiac management on AMI survival using propensity score and instrumental variable methods. *JAMA*. 2007;297(3):278-285.
10. Barnato AE, Chang CC, Farrell MH, Lave JR, Roberts MS, Angus DC. Is survival better at hospitals with higher "end-of-life" treatment intensity? *Med Care*. 2010;48(2):125-132.
11. Kahn JM, Rubenfeld GD, Rohrbach J, Fuchs BD. Cost savings attributable to reductions in intensive care unit length of stay for mechanically ventilated patients. *Med Care*. 2008;46(12):1226-1233.
12. Aiken LH, Clarke SP, Sloane DM, Sochalski J, Silber JH. Hospital nurse staffing and patient mortality, nurse burnout, and job dissatisfaction. *JAMA*. 2002;288(16):1987-1993.
13. Kim MM, Barnato AE, Angus DC, Fleisher LA, Kahn JM. The effect of multidisciplinary care teams on intensive care unit mortality [published correction appears in *Arch Intern Med*. 2010;170(10):867]. *Arch Intern Med*. 2010;170(4):369-376.
14. Meltzer D, Manning WG, Morrison J, et al. Effects of physician experience on costs and outcomes on an academic general medicine service: results of a trial of hospitalists. *Ann Intern Med*. 2002;137(11):866-874.
15. Lilly CM, McLaughlin JM, Zhao H, Baker SP, Cody S, Irwin RS; UMass Memorial Critical Care Operations Group. A multicenter study of ICU telemedicine reengineering of adult critical care. *Chest*. 2014;145(3):500-507.

Original Investigation | CARING FOR THE CRITICALLY ILL PATIENT

Association of Intensive Care Unit Admission With Mortality Among Older Patients With Pneumonia

Thomas S. Valley, MD; Michael W. Sjoding, MD; Andrew M. Ryan, PhD; Theodore J. Iwashyna, MD, PhD; Colin R. Cooke, MD, MSc, MS

IMPORTANCE Among patients whose need for intensive care is uncertain, the relationship of intensive care unit (ICU) admission with mortality and costs is unknown.

OBJECTIVE To estimate the relationship between ICU admission and outcomes for elderly patients with pneumonia.

DESIGN, SETTING, AND PATIENTS Retrospective cohort study of Medicare beneficiaries (aged ≥ 64 years) admitted to 2988 acute care hospitals in the United States with pneumonia from 2010 to 2012.

EXPOSURES ICU admission vs general ward admission.

MAIN OUTCOMES AND MEASURES Primary outcome was 30-day all-cause mortality. Secondary outcomes included Medicare spending and hospital costs. Patient and hospital characteristics were adjusted to account for differences between patients with and without ICU admission. To account for unmeasured confounding, an instrumental variable was used—the differential distance to a hospital with high ICU admission (defined as any hospital in the upper 2 quintiles of ICU use).

RESULTS Among 1 112 394 Medicare beneficiaries with pneumonia, 328 404 (30%) were admitted to the ICU. In unadjusted analyses, patients admitted to the ICU had significantly higher 30-day mortality, Medicare spending, and hospital costs than patients admitted to a general hospital ward. Patients ($n = 553\ 597$) living closer than the median differential distance (<3.3 miles) to a hospital with high ICU admission were significantly more likely to be admitted to the ICU than patients living farther away ($n = 558\ 797$) (36% for patients living closer vs 23% for patients living farther, $P < .001$). In adjusted analyses, for the 13% of patients whose ICU admission decision appeared to be discretionary (dependent only on distance), ICU admission was associated with a significantly lower adjusted 30-day mortality (14.8% for ICU admission vs 20.5% for general ward admission, $P = .02$; absolute decrease, -5.7% [95% CI, -10.6% , -0.9%]), yet there were no significant differences in Medicare spending or hospital costs for the hospitalization.

CONCLUSIONS AND RELEVANCE Among Medicare beneficiaries hospitalized with pneumonia, ICU admission of patients for whom the decision appeared to be discretionary was associated with improved survival and no significant difference in costs. A randomized trial may be warranted to assess whether more liberal ICU admission policies improve mortality for patients with pneumonia.

JAMA. 2015;314(12):1272-1279. doi:10.1001/jama.2015.11068

← Editorial page 1240

+ Supplemental content at jama.com

Author Affiliations: Author affiliations are listed at the end of this article.

Corresponding Author: Thomas S. Valley, MD, Division of Pulmonary and Critical Care Medicine, University of Michigan, 1500 E Medical Center Dr, 3916 Taubman Center, Ann Arbor, MI 48109-5360 (valleyt@umich.edu).

Section Editor: Derek C. Angus, MD, MPH, Associate Editor, JAMA (angusdc@upmc.edu).

The United States has seen considerable growth in intensive care unit (ICU) use over the last 3 decades.¹ This growth may be an appropriate response to the aging population, the greater burden of comorbid illness, and the improvements in care for an increasingly complex array of patients in the outpatient setting.² Alternatively, increasing ICU use may reflect “supply side” factors, such as expansion in critical care capacity and relatively generous reimbursement.^{3,4} This uncertainty underlies the concern that ICUs may be an important and expensive source of low-value care.

The value of ICU care, however, depends on the effectiveness of ICUs. Intensive care allows for greater attention to the patient, timelier delivery of treatments, and multidisciplinary expertise in the care of patients at risk for clinical deterioration. On the other hand, for some patients, the ICU may provide no additional benefit to care provided in the general ward while also increasing the risk for nosocomial infection and the likelihood that patients receive invasive, potentially harmful procedures.

Observational studies examining the relationship between ICU admission frequency and patient outcomes often suggest that greater ICU use does not achieve better outcomes.⁵⁻⁸ However, these results are likely subject to confounding by indication because sicker patients are more likely to be admitted to the ICU. With pneumonia as a leading reason for hospitalization,⁹ it is important to understand the implications of delivering intensive care to patients with pneumonia.

We sought to determine the association between ICU admission and outcomes, 30-day mortality and costs, among elderly Americans hospitalized for pneumonia. We hypothesized that ICU admission would not be associated with a survival benefit but would be associated with greater costs.

Methods

Data Source

The institutional review board for the University of Michigan approved the study and provided a waiver of consent (HUM00053488). A retrospective cohort study of all acute care hospitalizations from 2010 to 2012 was performed among fee-for-service Medicare beneficiaries 65 years and older. The Medicare Provider Analysis and Review file was linked to mortality data in the Medicare Beneficiary Summary File. Hospital characteristics were obtained from the 2010 to 2012 American Hospital Association’s Annual Surveys and the 2010 and 2011 Healthcare Cost Reporting Information Systems. Population and geographic information was obtained by linking the patient’s zip code of residence to 2010 US Census data.

Study Cohort

All patients with an *International Classification of Diseases, Ninth Revision, Clinical Modification (ICD-9-CM)* (1) primary diagnosis code for pneumonia or (2) primary diagnosis code for respiratory failure or sepsis and secondary diagnosis code of pneumonia were identified (eTable 1 in the Supple-

ment). This method of identifying pneumonia through administrative claims data is commonly used.¹⁰⁻¹² The analysis was limited to the first hospitalization for those with multiple eligible hospitalizations in the same year (eFigure 1 in the Supplement).

Treatment Variable and Covariate Definitions

The treatment variable was ICU admission, defined as the presence of an ICU or coronary care unit revenue center code in the administrative billing record.¹³ To account for differences between patients admitted to the ICU and those admitted to the wards, the analysis adjusted for demographics, comorbid illness, severity of illness, type of pneumonia, and year of admission. Income was defined by the patient’s zip code of residence using 2010 US Census data. Preexisting comorbid illness was measured according to Elixhauser et al,¹⁴ and severity of illness was captured by using secondary *ICD-9-CM* diagnosis and procedural codes for acute organ dysfunction,¹⁵ mechanical ventilation, respiratory failure, sepsis, shock, cardiac or respiratory arrest, and cardiopulmonary resuscitation.

The analysis adjusted for several additional hospital characteristics including hospital ownership (for profit, non-profit, or government), medical school affiliation, teaching hospital status (resident-to-hospital bed ratio), hospital size by number of beds, ICU size by proportion of total hospital beds, annual hospital pneumonia case volume, nursing ratio (nursing full-time equivalent per 1000 patient-days), proportion of Medicaid patients admitted, geographic region, and technological index¹⁶ (weighted sum of hospital capabilities).

Outcome Measures

The primary outcome was 30-day all-cause mortality measured from the time of hospital admission. Secondary outcomes included Medicare reimbursements to the hospital and hospital costs, calculated as the patient’s hospital charges multiplied by the hospital-specific annual cost-to-charge ratio.

Instrumental Variable

In a properly executed instrumental variable analysis, the instrument approximates random assignment of patients to a treatment group analogous to a randomized clinical trial. In this study, the commonly used “differential distance”^{17,18} instrument was selected. Differential distance was calculated as the difference between (1) the distance from a patient’s residence to the nearest hospital with high ICU admission and (2) the distance from a patient’s residence to the nearest hospital of any type. In other words, the differential distance is the extra distance, if any, beyond the closest hospital a patient would have to travel to arrive at a hospital with high ICU admission. The distribution of ICU admission rates was examined across all hospitals, and hospitals with high ICU admission were empirically defined as those with an ICU admission rate for pneumonia in the top 2 quintiles of the included hospitals, which corresponded to an ICU admission rate for pneumonia of higher than 32%. Distances were calculated using the linear arc distance function, which measures the number of miles between the centroids of 2 zip codes.

An instrumental variable was confirmed to be necessary for the analysis as the Durbin-Wu-Hausman tests of endogeneity were significant for all instrumental variable models (eAppendix 1 in the Supplement), indicating that standard multivariable regression resulted in biased estimates when compared with the instrumental variable model.¹⁹ The instrument satisfied 3 conditions necessary to establish validity (eAppendix 1 in the Supplement). First, differential distance was highly correlated with ICU admission (partial $F_{1,2986} = 245$, $P < .001$); instruments with F statistics higher than 10 are considered strong²⁰ (eTable 2 in the Supplement). Because most ill patients with pneumonia will seek care at the nearest hospital, patients who live close to a hospital with high ICU admission are more likely to be transported to that hospital, which increases their likelihood of being admitted to the ICU. Indeed, when stratified by the median differential distance (3.3 miles [interquartile range, 0-18.9]), ICU admission was substantially more likely among patients living near a hospital with high ICU admission than those living farther away (36% for patients living closer vs 23% for patients living farther) (eTable 3 in the Supplement). Second, differential distance was not associated with the outcomes, 30-day mortality, Medicare spending, or hospital costs, except through the instrument's effect on ICU admission (eTables 4-6 in the Supplement). Third, there should not be any mutual confounders between the instrument and the outcome. This condition was evaluated by (1) the distribution of patient-level covariates across differential distance (eTable 3 in the Supplement) and (2) the distribution of hospital-level characteristics across quintiles of ICU use (eTable 7 in the Supplement). If observed confounders are comparable across levels of differential distance, it provides greater confidence that unobserved confounders are similar as well.²¹ For instruments defined by geography, differences in urbanity and associated variables (eg, race and socioeconomic status) are commonly observed.^{18,22} The recommended approach to address such imbalances in these and other variables is to perform analyses stratified by these variables and/or adjust for them in the instrumental variable model.^{18,21}

Interpreting the Instrumental Variable Results

In contrast to standard multivariable regression in which the coefficient for ICU admission represents the adjusted treatment effect for the average patient, the coefficient in the instrumental variable analysis represents the adjusted treatment effect for the so-called marginal patient. Statistically, marginal patients are those that are admitted to the ICU solely due to their proximity to a hospital with high ICU admission.²³ The instrumental variable analysis does not rely on defining the specific clinical characteristics of these patients—instead it relies on the fact that patients reside randomly around hospitals and some patients are treated differently in different hospitals. In this context, these marginal patients (referred to as borderline patients in this article) may be interpreted as those whose need for ICU admission is borderline or discretionary—that is, patients who might receive care on a general ward at one hospital and in the ICU at another because it is uncertain whether ICU admission would benefit the patient²³ (eFigure 2 in the Supplement).

Statistical Analysis

χ^2 and t tests were used to evaluate associations between ICU admission and patient characteristics. Unadjusted analyses without covariates were performed using logistic regression for 30-day mortality and linear regression for Medicare spending and hospital costs. To account for average differences between patients, the association between ICU admission and 30-day mortality, payments by Medicare, and hospital costs were evaluated by logistic and linear regression models adjusted for patient and hospital characteristics. All regression models estimated robust standard errors with clustering at the hospital level.

In the instrumental variable analyses, 2-stage least squares regressions^{24,25} were performed on all patients after adjusting for patient and hospital characteristics described above, and standard errors adjusted for clustering of patients in hospitals. The adjusted outcomes from the instrumental variable model represent the mean predicted difference in the probability of death at 30 days, Medicare payments, or hospital costs. Adjusted absolute rates of outcomes were estimated using predictive margins.

The method of Newhouse and McClellan²¹ was used to estimate the fraction of patients hospitalized with pneumonia who were admitted to the ICU because they presented to a hospital with high ICU admission. In this approach, the percentage of patients for which the instrumental variable analysis applies can be determined by subtracting the average rate of ICU admission in the 2 patient populations stratified by median differential distance.

Subgroup and Sensitivity Analyses

To test the robustness of the findings, several subgroup and sensitivity analyses were performed. First, to address the potential for unmeasured confounding due to correlates of race and urbanity, which demonstrated imbalance by median differential distance, instrumental variable analyses were stratified by race or the National Center for Health Statistics Urban-Rural Classification Scheme.²⁶ Second, instrumental variable analyses were stratified by the proportion of total hospital beds that were ICU beds, an indirect measure of a hospital's likelihood of ICU capacity constraint that may be associated with increased mortality.²⁷ Third, to address observed differences in severity of illness by differential distance and to rule out the possibility that severely ill patients could be driving the association, the instrumental variable analysis was stratified by organ failure score and also repeated after excluding patients with *ICD-9-CM* codes for the following: mechanical ventilation, cardiopulmonary resuscitation, shock, or cardiac or respiratory arrest. Fourth, the instrumental variable analyses were repeated to assess the association of Medicare payments and hospital costs stratified by in-hospital mortality. Fifth, to assess the robustness of the results to the choice of modeling method, the average treatment effect of ICU admission on 30-day mortality was determined using inverse probability weighting (eAppendix 2 in the Supplement).

Data management and analysis was performed using SAS (SAS Institute), version 9.3, and Stata (StataCorp), version 13.1.

All tests were 2-sided with a *P* value of less than .05 considered significant.

Results

From 2010 to 2012, 1 327 370 acute care hospitalizations of Medicare beneficiaries with pneumonia were identified. Admissions to hospitals without ICU capabilities (3%), transfers from other acute care hospitals (3.6%), patients with missing zip codes (1.6%), or hospitalizations in US territories (0.01%) were excluded. After applying exclusion criteria, the final sample included 1 112 394 patients admitted to 2988 hospitals (eFigure 1 in the Supplement). Among these patients, 328 404 patients (29.5%) were admitted to the ICU, with patient characteristics listed in **Table 1** and eTable 8 in the Supplement. In the sample, 1193 hospitals (40%) were defined as hospitals with high ICU use. Hospital characteristics by ICU use and patient outcomes by ICU admission are listed in **Table 2** and **Table 3**.

In unadjusted analyses, patients admitted to the ICU compared with patients admitted to a general ward had greater 30-day mortality (35.9% for ICU admission vs 11.7% for general ward admission; absolute difference, 24.2% [95% CI, 23.8%-24.6%]), Medicare spending (\$19 279 for ICU admission vs \$7308 for general ward admission; absolute difference, \$11 971 [95% CI, \$11 634-\$12 307]), and hospital costs (\$23 475 for ICU admission vs \$7411 for general ward admission; absolute difference, \$16 064 [95% CI, \$15 658-\$16 469]) (**Table 4**).

Differences between patients admitted to the ICU and patients admitted to a general ward persisted in adjusted multivariable regression models. Though attenuated, average patients admitted to the ICU had significantly higher 30-day mortality compared with patients admitted to a general ward (21.5% for patients in the ICU vs 17.8% for patients in the general ward; absolute difference, 3.7% [95% CI, 3.3-4.0]) (**Table 4**). Risk-adjusted payments by Medicare (\$12 711 for patients in the ICU vs \$10 052 for patients in the general ward; absolute difference, \$2659 [95% CI, \$2513-\$2805]) remained greater with ICU admission as did hospital costs (\$17 160 for patients in the ICU vs \$10 048 for patients in the general ward; absolute difference, \$7112 [95% CI, \$6874-\$7349]).

The median differential distance to a hospital with high ICU admission was 3.3 miles. Of the patients for whom the differential distance was less than 3.3 miles, one-third (201 144 of 553 597 patients; 36.3%) were admitted to the ICU compared with one-fourth (127 260 of 558 797 patients; 22.8%) of those patients with pneumonia whose differential distance was more than 3.3 miles (eTable 3 and eFigure 2 in the Supplement). Therefore, following the method of Newhouse et al,²¹ ICU admission appeared to depend only on distance for approximately 13% of patients.

In the instrumental variable analysis, which estimates the effect in this subset of borderline patients and which also controlled for patient and hospital characteristics, ICU admission was associated with significantly lower 30-day mortality

Table 1. Patient Characteristics by Admission to the ICU vs General Ward

Characteristics	Patients, No. (%)	
	ICU	General Ward
Patients, No. ^a	328 404	783 990
Age, mean (SD), y	78 (8)	80 (8)
65-74	120 106 (36.6)	223 187 (28.5)
75-84	120 814 (36.8)	276 773 (35.3)
≥85	87 484 (26.6)	284 030 (36.2)
Women	169 078 (51.5)	437 085 (55.8)
Race/ethnicity		
White	273 507 (83.3)	688 644 (87.8)
Black	35 696 (10.9)	60 951 (7.8)
Other	19 201 (5.9)	34 395 (4.4)
Urbanity ^a		
Large central metropolitan	81 986 (25.0)	145 992 (18.7)
Large suburban metropolitan	77 100 (23.5)	181 996 (23.3)
Medium metropolitan	67 596 (20.6)	172 286 (22.0)
Small metropolitan	34 888 (10.7)	100 057 (12.8)
Micro metropolitan	37 660 (11.5)	107 401 (13.7)
Noncore	28 398 (8.7)	74 604 (9.5)
Median household income by zip code, \$		
<40 000	91 285 (27.8)	203 080 (25.9)
40 000-100 000	218 521 (66.5)	535 203 (68.3)
>100 000	18 598 (5.7)	45 707 (5.8)
Elixhauser comorbidities count, mean (SD) ^b	2.6 (1.3)	2.9 (1.3)
Admission source		
Outpatient	250 420 (76.3)	619 027 (79.0)
Emergency department	76 391 (23.3)	162 503 (20.7)
Hospital diagnoses ^a		
Pneumonia as primary diagnosis	111 315 (33.9)	643 237 (82.1)
Respiratory failure	221 308 (67.4)	126 661 (16.2)
Sepsis	143 093 (43.6)	102 998 (13.1)
Shock	90 392 (27.5)	9325 (1.2)
Cardiac or respiratory arrest	9421 (2.9)	1901 (0.2)
Type of pneumonia		
Unspecified	267 864 (81.6)	695 069 (88.7)
Viral	2904 (0.9)	8348 (1.1)
Bacterial	57 636 (17.6)	80 573 (10.3)
Procedures performed during hospitalization		
Mechanical ventilation	159 346 (48.5)	22 525 (2.9)
Cardiopulmonary resuscitation	9229 (2.8)	1843 (0.2)
Angus organ failure score ^c		
0	98 547 (30.0)	607 759 (77.5)
1	107 979 (32.9)	154 269 (19.7)
≥2	121 878 (37.1)	21 962 (2.8)
Year of admission		
2010	108 136 (29.4)	260 229 (70.6)
2011	112 625 (29.4)	270 888 (70.6)
2012	107 643 (29.9)	252 873 (70.1)

Abbreviation: ICU, intensive care unit.

^a There were 11 703 patients (1%) excluded from regression models due to missing differential distance (n = 5166), admission source (n = 4053), urban/rural (n = 2430), and pneumonia volume (n = 107).

^b All 29 Elixhauser comorbidities are listed in eTable 8 in the Supplement.

^c The Angus organ failure score identifies severity of illness by patient organ failures derived from the administrative record with a maximum score of 6, and higher scores indicating more organ failures.

Table 2. Hospital Characteristics by ICU Utilization

Characteristics	Hospitals, No. (%)	
	High ICU Admission ^a	Low ICU Admission
Hospitals, No.	1193	1795
Hospital ownership		
For profit	361 (30.3)	318 (17.7)
Nonprofit	661 (55.4)	1209 (67.4)
Government	171 (14.3)	268 (14.9)
Medical school affiliation	453 (38.0)	545 (30.4)
Teaching status		
No residents	891 (74.7)	1448 (80.7)
Minor teaching program, <0.25 residents/bed	202 (16.9)	257 (14.3)
Major teaching program, ≥0.25 residents/bed	100 (8.4)	90 (5.0)
Hospital beds		
<100	200 (16.8)	568 (31.6)
100-199	373 (31.3)	527 (29.4)
≥200	620 (52.0)	700 (39.0)
ICU beds, % ^b		
<5	166 (13.9)	239 (13.3)
5-10	461 (38.6)	882 (49.1)
>10	566 (47.5)	674 (37.5)
Hospital pneumonia annual case volume, mean (SD)	359 (287)	446 (348)
Nursing FTE per 1000 patient-days, mean (SD)	4.0 (1.5)	3.7 (1.5)
Technology index, mean (SD) ^c	21.9 (14.5)	20.9 (12.4)
Medicaid patients, %		
<7	270 (22.6)	734 (40.9)
7-11	406 (34.0)	668 (37.2)
>11	517 (43.3)	393 (21.9)
Census regions		
Northeast	148 (12.4)	346 (19.3)
Midwest	438 (36.7)	596 (33.2)
South	319 (26.7)	569 (31.7)
West	288 (24.1)	284 (15.8)

Abbreviations: FTE, full-time equivalent; ICU, intensive care unit.

^a High ICU use hospitals were defined as hospitals with an ICU admission rate for pneumonia in the top 40% of all hospitals over the 3-year period with a minimum ICU rate of admission for pneumonia of 32%.

^b Percentage of hospital beds that are ICU beds.

^c The technology index is the weighted sum of the following hospital capabilities: obstetrics, medical/surgical ICU, cardiac ICU, emergency department, trauma center, open heart surgery, radiation therapy, computed tomography, diagnostic radiology, magnetic resonance imaging, positron-emission tomography, single-photon emission computed tomography, ultrasonography, and transplantation service.¹⁶

when compared with general ward admission (14.8% for ICU admission vs 20.5% for general ward admission, $P = .02$) with an absolute reduction in 30-day mortality of 5.7% (95% CI, -10.6% to -0.9%) (Table 4 and eTable 9 in the Supplement). ICU admission was not associated with significant differences in payments by Medicare (\$9918 for ICU admission vs \$11 238 for general ward admission; absolute decrease, \$1320 [95% CI, -\$3421 to \$781], $P = .22$) or hospital costs (\$14 162 for ICU admission vs \$11 320 for general ward admission; abso-

lute increase, \$2842 [95% CI, -\$168 to \$5851], $P = .06$) (Table 4 and eTables 10-11 in the Supplement).

Sensitivity analyses demonstrated consistent results in the estimated benefit of ICU admission across urban and rural categories, strata of race, organ failures, ICU beds as a percentage of total hospital beds, after excluding severely ill patients, or when estimating the association of ICU admission using inverse probability weighting. None of these analyses yielded results that were substantially different from the pooled estimate (Figure). When stratified by in-hospital mortality, ICU admission was not associated with significant differences in Medicare spending or hospital costs (eTable 12 in the Supplement).

Discussion

Among hospitalized patients with pneumonia, ICU admission of patients for whom the decision appeared to be discretionary was associated with a 5.7% absolute survival advantage at 30 days compared with patients admitted to general wards. There were no significant differences in Medicare spending or hospital costs associated with ICU admission. Contrary to the prespecified hypothesis, these findings suggest that ICU admission for borderline patients (those for whom ICU admission depends on the hospital to which they present) is associated with reduced mortality without a considerable increase in costs.

When interpreting the results of this study, it is important to understand the population to which it applies. Whereas traditional regression models can be applied only to statistically average patients, the instrumental variable findings apply only to patients with pneumonia whose ICU admission decision varied depending on distance from a hospital with high ICU admission. This population of patients does not immediately translate into specific clinical criteria; however, it is likely that these are patients who would be admitted to the ICU in one hospital but not another. Such patients represent those with a borderline or uncertain need for the ICU. Instrumental variable analyses do not definitively identify the exact size of this population; however, our results suggest that the population of patients who might benefit from ICU admission is not trivial, particularly given the substantial number of Medicare patients with pneumonia each year. Our results should not, however, be extrapolated to patients whose ICU triage decision is straightforward—those who clearly benefit from ICU admission (eg, mechanically ventilated) and those for whom ICU admission is obviously not indicated (eg, low-risk admissions).²³

There are several reasons why ICU admission may be beneficial for borderline patients with pneumonia. First, the ICU brings patients greater attention from nurses allowing for more timely recognition of decompensation.^{28,29} Late admission to an ICU for patients with pneumonia was associated with worse outcomes compared with patients with a similar disease severity admitted early to an ICU, at least in a 2-site study.³⁰ Second, pneumonia is the most common cause of sepsis, a syndrome in which earlier, more aggressive care (more readily

delivered in ICUs than the general ward) has been associated with reduced mortality.³¹ Third, many studies,³²⁻³⁴ but not all,³⁵ suggest that ICU admission for pneumonia has been associated with increased rates of guideline-based treatment, which has been linked with improved mortality and reduced costs. Fourth, ICU admission increases the likelihood that a patient with pneumonia is managed by pulmonary or critical care specialists, clinicians whose case volume or expertise in pneumonia care may yield better outcomes.^{32,36} Further research is needed to elucidate these and other potential mechanisms underlying the ICU's beneficial association with mortality for patients with pneumonia. This research could include randomized trials to provide a degree of causal evidence not possible even from instrumental variable analyses and other observational approaches.

The study results differ from several that have examined the association between ICU admission and patient outcomes, primarily because they sought to answer different questions. Previous studies assessed the outcomes of average patients admitted to the ICU with traditional risk adjustment and have shown increased overall mortality and costs.^{35,37} Yet, such studies fail to fully address the confounding by indication for ICU admission.³⁸ For example, many individuals are denied admission to the ICU for reasons that cannot be measured by administrative data or because they do not require life-sustaining therapies, potentially gaining less additional benefit from ICU-level care that cannot fully be accounted for using severity of illness measures. This study addresses the potential for unmeasured confounding with instrumental variable analyses.

This study should be interpreted in the context of several limitations. First, administrative data were used, which may under-identify or improperly identify patients with pneumonia.¹³ However, patients with pneumonia were identified using a well-established definition from epidemiologic

research, which may better identify patients with pneumonia than the definition employed by Medicare due to variations in hospital coding.¹⁰⁻¹² Second, it cannot be proven that the instrument fully addresses unmeasured confounding.^{23,24} However, subgroup and sensitivity analyses performed to address this concern corroborated the primary results. Third,

Table 3. Patient Outcomes of Care by Admission to ICU vs General Ward

Outcomes	Patients, No. (%)	
	ICU	General
Total patients	328 404	783 990
Length of stay, median (IQR), d	7 (4-12)	4 (3-6)
Quartiles (\$ range)		
Total Medicare payment per patient		
1 (0-4981)	22 124 (6.7)	256 169 (32.7)
2 (4982-7639)	36 511 (11.1)	241 472 (30.8)
3 (7640-11 162)	88 292 (26.9)	189 783 (24.2)
4 (11 163-882 637)	181 477 (55.3)	96 566 (12.3)
Hospital costs per patient ^a		
1 (153-4614)	16 003 (4.9)	260 844 (33.4)
2 (4615-7389)	34 589 (10.6)	242 305 (31.0)
3 (7390-13 154)	79 773 (24.4)	197 112 (25.3)
4 (13 155-1 375 266)	196 387 (60.1)	80 504 (10.3)
Discharge destination		
Home	94 961 (29.1)	476 492 (61.2)
Rehabilitation or nursing facility	114 466 (35.1)	225 484 (28.9)
Dead	79 382 (24.3)	35 709 (4.6)
Other	39 595 (11.5)	46 305 (5.3)
30-d Readmission	61 414 (18.7)	132 548 (16.9)
30-d Mortality	118 001 (35.9)	92 059 (11.7)

Abbreviations: ICU, intensive care unit; IQR, interquartile range.

^a There were 4877 patients (0.4%) excluded from regression models due to missing hospital cost-to-charge ratios.

Table 4. Association of ICU Admission on 30-Day Mortality, Medicare Spending, and Hospital Costs

Model	ICU Patients	General Ward Patients	Absolute Difference (95% CI)	P Value
30-d Mortality, %				
Unadjusted regression	35.9	11.7	24.2 (23.8 to 24.6)	<.001
Adjusted regression ^a	21.5	17.8	3.7 (3.3 to 4.0)	<.001
Instrumental variable ^{a,b}	14.8	20.5	-5.7 (-10.6 to -0.9)	.02
Mean Medicare payments per patient, \$				
Unadjusted regression	19 279	7308	11 971 (11 634 to 12 307)	<.001
Adjusted regression ^a	12 711	10 052	2659 (2513 to 2805)	<.001
Instrumental variable ^{a,b}	9918	11 238	-1320 (-3421 to 781)	.22
Mean hospital costs per patient, \$				
Unadjusted regression	23 475	7411	16 064 (15 658 to 16 469)	<.001
Adjusted regression ^a	17 160	10 048	7112 (6874 to 7349)	<.001
Instrumental variable ^{a,b}	14 162	11 320	2842 (-168 to 5851)	.06

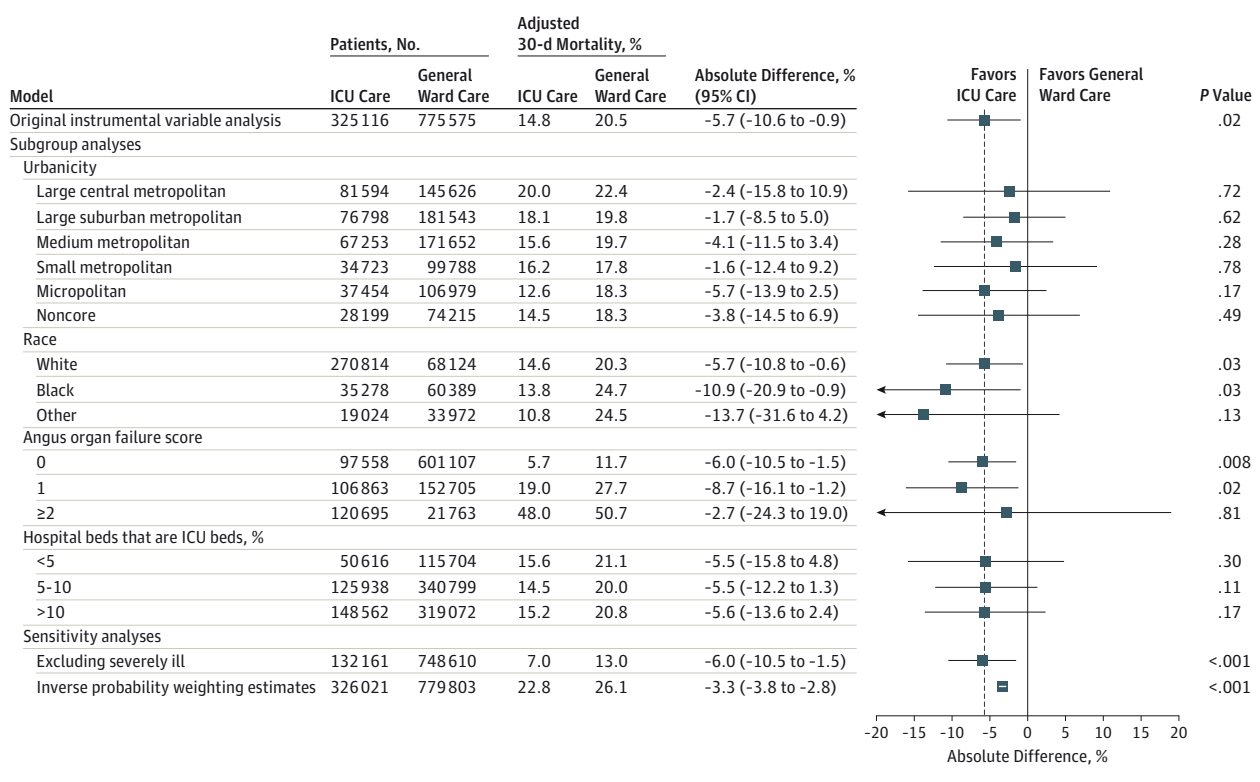
Abbreviation: ICU, intensive care unit.

^a Model adjusted for all variables in Table 1 and Table 2 in addition to all 29 individual Elixhauser comorbidities. Angus organ failure score, which identifies severity of illness by patient organ failures derived from the administrative record with a maximum score of 6, was defined to include all organ failures numbered 0 to 5 or higher. Higher scores indicate more organ failures.

Hospital region included the 9 US census defined regions. All standard errors for models were adjusted for clustering of patients within hospitals.

^b Two-stage least squares regression of all patients using differential distance to the nearest hospital with high ICU admission as the instrumental variable, adjusted for all variables in Table 1 and Table 2, and for clustering of patients within hospitals.

Figure. Instrumental Variable Subgroup and Sensitivity Analyses for 30-Day Mortality Among Elderly Patients With Pneumonia Admitted to the ICU vs General Ward



ICU indicates intensive care unit; ICD-9-CM, *International Classification of Diseases, Ninth Revision, Clinical Modification*. With exception of the inverse probability weighting estimate, all models used an instrumental variable to adjust for all variables in Table 1 and Table 2 in addition to all 29 individual Elixhauser comorbidities and clustering of patients within hospitals. The regression models excluded 11 703 patients (1%) due to missing differential distance (n = 5166), admission source (n = 4053), urban/rural (n = 2430), pneumonia volume (n = 107). The Angus organ failure score identifies severity of illness by patient organ failures derived from the administrative record with a

maximum score of 6. Higher scores indicate more organ failures. Details of the inverse probability weighting estimate can be found in eAppendix 2 in the Supplement. The severely ill subgroup excluded individuals with shock (ICD-9-CM: 458, 785.5-785.59, 958.4, 998.0), cardiac or respiratory arrest (ICD-9-CM: 427.5, 799.1), cardiopulmonary resuscitation (ICD-9-CM: 99.60, 99.63), or invasive or noninvasive mechanical ventilation (ICD-9-CM: 96.7, 96.70, 96.71, 96.72, 93.90). Error bars represent 95% CIs for absolute mortality differences (ICU vs general ward) for all models.

because the analysis includes only Medicare beneficiaries, it may not generalize to a younger population with pneumonia. Fourth, data was not available to identify either the timing of ICU admission within a hospitalization or the reason for ICU admission, preventing an exploration of the chain of events leading up to ICU admission or the mechanism through which the ICU may benefit borderline patients. Similarly, although there are many reasons for the variation in ICU use between hospitals, this study was unable to examine clinician-specific effects on ICU triage. Finally, although true economic costs were not examined and we could not examine physician, facility, or out-patient payments, hospital costs and Medicare payments represent the real-world transaction of money between hospitals and Medicare for patient care.³⁹

These findings may have implications for health system leaders and policy makers seeking to improve the quality and efficiency of ICU care. In order to contain US health care costs, it has been suggested that reducing critical care bed supply would result in more efficient admission decisions and cost savings with minimal mortality decrements, particularly in cer-

tain possibly “oversupplied” regions of the country.^{3,40} This assertion presumes that ICU admission for more discretionary patients provides minimal benefit but substantially increases costs. The findings of this study conflict with such assertions and suggest that greater rates of ICU admissions for patients with pneumonia may not only improve survival, but might do so without significantly increasing hospital costs. Indeed, if replicated by others, these results could motivate a trial of increased access to ICU (or ICU-like) care for patients with pneumonia who might otherwise be cared for on the ward.

Conclusions

Among Medicare beneficiaries hospitalized with pneumonia, ICU admission of patients for whom the decision appeared to be discretionary was associated with improved survival and no significant difference in costs. A randomized trial may be warranted to assess whether more liberal ICU admission policies improve mortality for patients with pneumonia.

ARTICLE INFORMATION

Author Affiliations: Division of Pulmonary and Critical Care Medicine, Department of Internal Medicine, University of Michigan, Ann Arbor (Valley, Sjoding, Iwashyna, Cooke); Michigan Center for Integrative Research in Critical Care, University of Michigan, Ann Arbor (Valley, Sjoding, Iwashyna, Cooke); Center for Health Outcomes and Policy, University of Michigan, Ann Arbor (Ryan, Cooke); Veterans Affairs Center for Clinical Management Research, Ann Arbor, Michigan (Iwashyna); Australian and New Zealand Intensive Care Research Centre, Department of Epidemiology and Preventive Medicine, Monash University, Melbourne, Australia (Iwashyna); Institute for Healthcare Innovation and Policy, University of Michigan, Ann Arbor (Cooke).

Author Contributions: Dr Valley had full access to all of the data in the study and takes responsibility for the integrity of the data and the accuracy of the data analysis.

Study concept and design: Valley, Ryan, Cooke.

Acquisition, analysis, or interpretation of data: Valley, Sjoding, Ryan, Iwashyna, Cooke.

Drafting of the manuscript: Valley, Cooke.

Critical revision of the manuscript for important intellectual content: Valley, Sjoding, Ryan, Iwashyna, Cooke.

Statistical analysis: Valley, Sjoding, Ryan, Iwashyna.

Obtained funding: Cooke.

Administrative, technical, or material support: Cooke.

Study supervision: Cooke.

Conflict of Interest Disclosures: All authors have completed and submitted the ICMJE Form for Disclosure of Potential Conflicts of Interest and none were reported.

Funding/Support: This work was supported by grant T32HL007749 from the National Institutes of Health (Drs Valley and Sjoding), grant 11-109 from the Department of Veterans Affairs Health Services Research and Development Service (Dr Iwashyna), and grant K08HS020672 from Agency for Healthcare Research and Quality (Dr Cooke).

Role of the Funder/Sponsor: The funding organizations had no role in the design and conduct of the study; in the collection, analysis, and interpretation of the data; in the preparation, review, or approval of the manuscript; or in the decision to submit the manuscript for publication.

Disclaimer: This article does not necessarily represent the view of the US government or the Department of Veterans Affairs.

REFERENCES

- Halpern NA, Pastores SM. Critical care medicine in the United States 2000-2005. *Crit Care Med*. 2010;38(1):65-71.
- Wunsch H. Is there a Starling curve for intensive care? *Chest*. 2012;141(6):1393-1399.
- Gooch RA, Kahn JM. ICU bed supply, utilization, and health care spending. *JAMA*. 2014;311(6):567-568.
- Escher M, Perneger TV, Chevrolet JC. National questionnaire survey on what influences doctors' decisions about admission to intensive care. *BMJ*. 2004;329(7463):425.
- Admon AJ, Seymour CW, Gershengorn HB, Wunsch H, Cooke CR. Hospital-level variation in ICU admission and critical care procedures for patients hospitalized for pulmonary embolism. *Chest*. 2014;146(6):1452-1461.
- Gershengorn HB, Iwashyna TJ, Cooke CR, Scales DC, Kahn JM, Wunsch H. Variation in use of intensive care for adults with diabetic ketoacidosis. *Crit Care Med*. 2012;40(7):2009-2015.
- Safavi KC, Dharmarajan K, Kim N, et al. Variation exists in rates of admission to intensive care units for heart failure patients across hospitals in the United States. *Circulation*. 2013;127(8):923-929.
- Sun HK, Nicolau DP, Kuti JL. Resource utilization of adults admitted to a large urban hospital with community-acquired pneumonia caused by *Streptococcus pneumoniae*. *Chest*. 2006;130(3):807-814.
- Torio CM, Ph D, Andrews RM. National inpatient hospital costs. <https://www.hcup-us.ahrq.gov/reports/statbriefs/sb160.jsp>. Accessed August 25, 2015.
- Lindenauer PK, Lagu T, Shieh M-S, Pekow PS, Rothberg MB. Association of diagnostic coding with trends in hospitalizations and mortality of patients with pneumonia, 2003-2009. *JAMA*. 2012;307(13):1405-1413.
- Rothberg MB, Pekow PS, Priya A, Lindenauer PK. Variation in diagnostic coding of patients with pneumonia and its association with hospital risk-standardized mortality rates. *Ann Intern Med*. 2014;160(6):380-388.
- Sjoding MW, Iwashyna TJ, Dimick JB, Cooke CR. Gaming hospital-level pneumonia 30-day mortality and readmission measures by legitimate changes to diagnostic coding. *Crit Care Med*. 2015;43(5):989-995.
- Quan H, Parsons GA, Ghali WA. Validity of procedure codes in *International Classification of Diseases, 9th revision*, clinical modification administrative data. *Med Care*. 2004;42(8):801-809.
- Elixhauser A, Steiner C, Harris DR, Coffey RM. Comorbidity measures for use with administrative data. *Med Care*. 1998;36(1):8-27.
- Angus DC, Linde-Zwirble WT, Lidicker J, Clermont G, Carcillo J, Pinsky MR. Epidemiology of severe sepsis in the United States. *Crit Care Med*. 2001;29(7):1303-1310.
- Landon BE, Normand S-LT, Lessler A, et al. Quality of care for the treatment of acute medical conditions in US hospitals. *Arch Intern Med*. 2006;166(22):2511-2517.
- McClellan M, McNeil BJ, Newhouse JP. Does more intensive treatment of acute myocardial infarction in the elderly reduce mortality? *JAMA*. 1994;272(11):859-866.
- Garabedian LF, Chu P, Toh S, Zaslavsky AM, Soumerai SB. Potential bias of instrumental variable analyses for observational comparative effectiveness research. *Ann Intern Med*. 2014;161(2):131-138.
- Baiocchi M, Cheng J, Small DS. Instrumental variable methods for causal inference. *Stat Med*. 2014;33(13):2297-2340.
- Rassen JA, Brookhart MA, Glynn RJ, Mittleman MA, Schneeweiss S. Instrumental variables II. *J Clin Epidemiol*. 2009;62(12):1233-1241.
- Newhouse JP, McClellan M. Econometrics in outcomes research. *Annu Rev Public Health*. 1998;19:17-34.
- Kahn JM, Ten Have TR, Iwashyna TJ. The relationship between hospital volume and mortality in mechanical ventilation. *Health Serv Res*. 2009;44(3):862-879.
- Harris KM, Remler DK. Who is the marginal patient? *Health Serv Res*. 1998;33(5 Pt 1):1337-1360.
- Schneeweiss S, Seeger JD, Landon J, Walker AM. Aprotinin during coronary-artery bypass grafting and risk of death. *N Engl J Med*. 2008;358(8):771-783.
- Pirracchio R, Sprung C, Payen D, Chevret S. Benefits of ICU admission in critically ill patients. *BMC Med Res Methodol*. 2011;11(1):132.
- Ingram DD, Franco SJ. 2013 NCHS urban-rural classification scheme for counties. *Vital Health Stat*. 2014;166(1):1-73.
- Gabler NB, Ratcliffe SJ, Wagner J, et al. Mortality among patients admitted to strained intensive care units. *Am J Respir Crit Care Med*. 2013;188(7):800-806.
- Kelly DM, Kutney-Lee A, McHugh MD, Sloane DM, Aiken LH. Impact of critical care nursing on 30-day mortality of mechanically ventilated older adults. *Crit Care Med*. 2014;42(5):1089-1095.
- Sales A, Sharp N, Li Y-F, et al. The association between nursing factors and patient mortality in the Veterans Health Administration. *Med Care*. 2008;46(9):938-945.
- Restrepo MI, Mortensen EM, Rello J, Brody J, Anzueto A. Late admission to the ICU in patients with community-acquired pneumonia is associated with higher mortality. *Chest*. 2010;137(3):552-557.
- Lee SJ, Ramar K, Park JG, Gajic O, Li G, Kashyap R. Increased fluid administration in the first 3 hours of sepsis resuscitation is associated with reduced mortality. *Chest*. 2014;146(4):908-915.
- Lin HC, Xirasagar S, Chen CH, Hwang YT. Physician's case volume of intensive care unit pneumonia admissions and in-hospital mortality. *Am J Respir Crit Care Med*. 2008;177(9):989-994.
- Merchant S, Mullins CD, Shih Y-CT. Factors associated with hospitalization costs for patients with community-acquired pneumonia. *Clin Ther*. 2003;25(2):593-610.
- Oster G, Berger A, Edelsberg J, Weber DJ. Initial treatment failure in non-ICU community-acquired pneumonia. *J Med Econ*. 2013;16(6):809-819.
- Sjoding MW, Prescott HC, Wunsch H, Iwashyna TJ, Cooke CR. Hospitals with the highest intensive care utilization provide lower-quality pneumonia care to the elderly. *Crit Care Med*. 2015;43(6):1178-1186.
- Kahn JM. What's new in ICU volume-outcome relationships? *Intensive Care Med*. 2013;39(9):1635-1637.
- Fisher ES, Wennberg DE, Stukel TA, Gottlieb DJ, Lucas FL, Pinder EL. The implications of regional variations in Medicare spending. *Ann Intern Med*. 2003;138(4):288-298.
- Sjoding MW, Luo K, Miller MA, Iwashyna TJ. When do confounding by indication and inadequate risk adjustment bias critical care studies? *Crit Care*. 2015;19(1):195.
- Kahn JM. Understanding economic outcomes in critical care. *Curr Opin Crit Care*. 2006;12(5):399-404.
- Wallace DJ, Angus DC, Seymour CW, Barnato AE, Kahn JM. Critical care bed growth in the United States. *Am J Respir Crit Care Med*. 2015;191(4):410-416.