



Departments of Medicine and Anesthesia, Cardiovascular Research Institute, University of California, San Francisco, San Francisco, CA 94143-0624, USA

Correspondence to: M A Matthay  
Michael.matthay@ucsf.edu

Cite this as: *BMJ* 2016;353:i1585  
doi: 10.1136/bmj.i1585

# Sepsis: pathophysiology and clinical management

Jeffrey E Gotts, Michael A Matthay

## ABSTRACT

Sepsis, severe sepsis, and septic shock represent increasingly severe systemic inflammatory responses to infection. Sepsis is common in the aging population, and it disproportionately affects patients with cancer and underlying immunosuppression. In its most severe form, sepsis causes multiple organ dysfunction that can produce a state of **chronic** critical illness characterized by severe immune dysfunction and catabolism. Much has been learnt about the pathogenesis of sepsis at the molecular, cell, and intact organ level. Despite **uncertainties** in **hemodynamic management** and several treatments that have failed in clinical trials, investigational therapies increasingly target sepsis induced organ and immune dysfunction. Outcomes in sepsis have greatly improved overall, probably because of an enhanced focus on early diagnosis and fluid resuscitation, the rapid delivery of effective antibiotics, and other improvements in supportive care for critically ill patients. These improvements include lung protective ventilation, more **judicious** use of **blood** products, and strategies to **reduce nosocomial** infections.

## Introduction

Sepsis is a common, deadly, and expensive disease worldwide. Although sepsis has long been recognized, it was not clinically defined until the late 20th century, mainly because the lack of effective antimicrobials and supportive care prevented patients with sepsis from surviving long enough to be studied or to develop sequelae of organ dysfunction. As care and outcomes improved, the need for more precise terminology became evident both for clinicians and for researchers designing clinical trials.<sup>1</sup> In the early 1990s, a consensus statement was developed by the American College of Chest Physicians and the Society of Critical Care Medicine (SCCM) that defined systemic inflammatory response syndrome (SIRS), **sepsis**, **severe sepsis**, and **septic shock** in terms of both clinical and laboratory abnormalities (fig 1),<sup>2</sup> emphasizing a **continuum** of acute inflammation and organ dysfunction. Revised modestly in 2001,<sup>4</sup> these definitions have formed the basis of the past quarter century of research into sepsis and catalyzed the evolution of its clinical recognition and management, and the design of clinical trials. However, the **sensitivity** and **specificity** of **SIRS** criteria have been **questioned**,<sup>5,6</sup> as has the **contention** that SIRS, sepsis, severe sepsis, and septic shock **occur** along a **continuum** rather than as **discrete** clinical entities.<sup>7</sup> In February 2016, the European Society of Intensive Care Medicine and the SCCM published **new** consensus definitions of sepsis and related clinical criteria (fig 1; **Sepsis-3**).<sup>3</sup> The most important changes were:

- The terms **SIRS** and **severe sepsis** were **eliminated**
- Sepsis is now defined as life threatening organ

## HOW PATIENTS WERE INVOLVED IN THE CREATION OF THIS ARTICLE

A 20 year old survivor of severe pneumococcal sepsis and acute respiratory distress syndrome who required a lung transplant, as well as his mother, kindly accepted an invitation to review the manuscript as patient reviewers for *The BMJ*. They were asked to indicate which sections or information were of greatest importance and relevance to them and which sections were the least useful. Alternatively, or in addition, they could write general comments about what they thought was missing or underemphasized. As a result of their input, we clarified several areas of the article and put more emphasis on the role of vaccines in preventing illness and on improvements in supportive critical care.

dysfunction caused by a **dysregulated** host response to infection

- Organ **dysfunction** is newly defined in terms of a change in baseline **SOFA** (sequential organ failure assessment) score
- Septic **shock** is defined as the **subset** of sepsis in which underlying **circulatory** and **cellular** or metabolic abnormalities are profound enough to **increase mortality** substantially.

Novel mechanistic insights about sepsis have not yet translated into specific drug treatments. However, mortality has declined even as the severity and incidence of sepsis have risen. In this review, which is aimed at specialists in critical care and related areas, we critically review the past 35 years of published studies on the epidemiology, risk factors, microbiology, pathogenesis, and treatment of sepsis.

Category	Definition
PREVIOUS DEFINITIONS	
SIRS (systemic inflammatory response syndrome)	Two of the following: <ul style="list-style-type: none"> <li>• Temperature &gt;38°C or &lt;36°C</li> <li>• Heart rate &gt; 90 beats/min</li> <li>• Respiratory rate &gt;20 breaths/min or arterial carbon dioxide pressure &lt;32 mm Hg</li> <li>• White blood cell count &gt;12×10<sup>9</sup>/L or &lt;4×10<sup>9</sup>/L</li> </ul>
Sepsis	SIRS with infection (presumed or proven)
Severe sepsis	Sepsis with evidence of acute organ dysfunction (hypotension, lactic acidosis, reduced urine output, reduced PaO <sub>2</sub> /FIO <sub>2</sub> ratio, raised creatinine or bilirubin, thrombocytopenia, raised international normalized ratio)
Septic shock	Sepsis with persistent hypotension after fluid resuscitation
REVISED DEFINITIONS	
Sepsis	Life threatening organ dysfunction* caused by a dysregulated host response to infection
Septic shock	Sepsis and vasopressor therapy needed to increase mean arterial pressure to ≥65 mm Hg and lactate to >2 mmol/L despite adequate fluid resuscitation

Fig 1 | Previous<sup>2</sup> and recently revised<sup>3</sup> definitions of sepsis and related syndromes. \*As assessed by an acute change of ≥2 points in the sequential organ failure assessment score (components: partial pressure of oxygen in arterial blood/fractional inspired oxygen (PaO<sub>2</sub>/FIO<sub>2</sub>) ratio, Glasgow coma scale, mean arterial pressure, vasopressor use, serum creatinine or urine output, bilirubin, and platelet count). We used the previous definitions in this review because they are central to the understanding of the past quarter century of research into the epidemiology, pathogenesis, and treatment of sepsis, including all ongoing clinical trials

### Sources and selection criteria

We identified references for this review through searches of publications listed by PubMed from 1980 to 23 February 2016. We used the search terms “sepsis”, “septic”, “SIRS”, “infection”, “epidemiology”, “pathophysiology”, “microbiology”, “resuscitation”, “history”, “treatment”, “therapy”, “cancer”, “malignancy”, “age”, “ethnicity”, “race”, “immunosuppression”, “genetic”, “endothelial”, “epithelial”, “coagulopathy”, “cytokine”, “guidelines”, and “resolution”. References were also identified from relevant review articles. We looked at in vitro, animal, and human studies, including meta-analyses. Only articles published in English were reviewed. We screened more than 5000 articles of evidence classes I-IV and included classes I-III. We excluded articles published in non-peer reviewed journals, case reports, and small uncontrolled series. The final reference list was based on relevance to the topics covered in the review.

### Epidemiology

Over the past 40 years the incidence of severe sepsis has substantially increased, partly because of the increasing age of the population. The latest estimates in the United States, Europe, and the United Kingdom range between 0.4/1000 and 1/1000 of the population.<sup>8-12</sup> Remarkably, in-hospital mortality for patients with sepsis during this period has decreased from 28% to 18%.<sup>9</sup> A recent study that used a database of prospectively collected data from more than 90% of all intensive care unit (ICU) admissions in Australia and New Zealand between 2000 and 2012 confirmed these trends in both incidence and mortality.<sup>13</sup> Using objective definitions of acute organ dysfunction, severe sepsis in patients admitted to the ICU was estimated to increase from 7.2% to 11.1% during the study period. At the same time, hospital mortality in severe sepsis declined from 35% to 18%, an improvement that

persisted across different severities of illness, geographic regions, and hospital types and sizes. Cumulatively, the highest quality epidemiologic studies indicate that severe sepsis is becoming both more common and less deadly.

### Host differences in the incidence and outcome of sepsis Demographics

Women have a lower incidence of severe sepsis, yet mortality results are mixed.<sup>8-16</sup> The causes of this sex difference remain unexplained but may involve the effect of sex hormones on innate and adaptive immunity and on the cardiovascular response to cytokine signaling.<sup>17</sup> Race seems to be another important risk factor for sepsis. The incidence of sepsis in the US is higher in non-whites (relative risk 1.9), especially African-Americans.<sup>9</sup> Similar results were reported in a subset of US states,<sup>18</sup> and in a separate detailed analysis from New Jersey.<sup>19</sup> Possible explanations for these differences include disparities in access to timely healthcare, immunizations, poverty, and comorbidities including HIV, diabetes, chronic kidney disease, and substance use disorders.<sup>18-20</sup> However, the increased incidence of infection and organ dysfunction in patients of African descent seems to persist after controlling for many of these factors, suggesting that genetic factors may also be involved.<sup>20-22</sup>

Older patients are far more likely to develop sepsis. A study of discharge data from 500 US hospitals reported that patients 65 years and older comprised 12% of the population but nearly 65% of sepsis cases (relative risk 13.1).<sup>23</sup> Older patients were twice as likely to have comorbid conditions, but a multivariate analysis that adjusted for these conditions in addition to race, sex, source of infection, and severity of illness found that patients with sepsis who were aged 65 or more were 2.3 times more likely to die. Furthermore, patients who survived were less likely to be discharged home. A more recent study

published in 2014 focused on longer term mortality in patients 65 years or more treated for severe sepsis in the US Veterans Affairs healthcare system in the mid-2000s.<sup>24</sup> Of the 40% of patients who survived for at least 90 days after the initial episode, an additional 31% had died by one year and 43% by two years, with the highest mortality associated with comorbid cirrhosis or metastatic cancer. Thus, advancing age is a strong risk factor for the incidence of sepsis and mortality from sepsis, and this is explained in part by the presence of comorbid conditions. Accordingly, the aging of the population probably explains much of the rising incidence of sepsis in industrialized societies.

### Immunosuppression and cancer

Conditions that suppress innate and adaptive immunity are risk factors for sepsis. A multicenter study of sepsis in French ICUs estimated that immunosuppression was associated with an increased incidence of severe sepsis (odds ratio 2.8).<sup>25</sup> Chronic conditions that suppress the immune system—including HIV/AIDS, cirrhosis, asplenia, and autoimmune disease—are heavily represented in large epidemiologic studies of patients with sepsis.<sup>8,27</sup> An observational study published in 2014 of patients admitted to 11 French ICUs between 1997 and 2011 with severe sepsis or septic shock found that 31% were immunocompromised from AIDS, solid organ transplantation, neutropenia, solid or hematologic cancer without neutropenia, inflammatory disorder, and primary immunodeficiency.<sup>28</sup> Only AIDS, neutropenia, and cancer were independent risk factors for 28 day mortality compared with immunocompetent patients.

Patients with cancer are often immunosuppressed, from both the cancer and its treatment. An analysis of ICD-9 (international classification of diseases, 9th revision) codes from six US states found that patients with cancer had a relative risk for severe sepsis of nearly 4 (16.4 cases/1000 cancer population), along with 52% higher hospital mortality (38% v 25%), and a three times longer hospital stay compared with patients without cancer.<sup>29</sup> Patients with lung and hematologic cancers fared the worst. An analysis of 563 patients with cancer admitted with sepsis to a single Brazilian ICU between 2003 and 2007 reported 67% mortality at six months in patients with severe sepsis.<sup>30</sup> The best predictors of mortality included low performance status (odds ratio 3.6), recurrence or progression of cancer (2.4), infectious source other than urine (3.3), and respiratory (2.3) or renal (2.1) impairment. Similarly, a retrospective analysis of patients with cancer admitted with septic shock to 41 French ICUs between 1997 and 2008 identified mechanical ventilation (5.5), renal replacement therapy (1.7), and fungal infection (2.0) as independent risk factors for mortality.<sup>31</sup> This study also reported a steep decline in ICU mortality in patients with cancer and septic shock from 70% in 1997 to 53% in 2008, and made the important observation that outcomes were better in high volume centers.

### Genetic variants

A landmark study of more than 1000 people who had been adopted in the 1920s to the 1940s in Denmark

reported a remarkable increase in the risk of death by infection before the age of 50 if a biological parent died of an infectious cause (relative risk 5.8 (95% confidence interval 2.4 to 13.7) v 0.7 (0.1 to 5.4) for an adoptive parent).<sup>32</sup> Although generated in an era before the widespread use of antibiotics, these data provide strong evidence that the tendency to succumb to overwhelming infection is in part heritable. A limited number of patients have congenital immunodeficiencies related to defects in innate and adaptive immune processes, including pattern recognition receptors, complement, cytokines, and effector cells.<sup>33</sup> Despite an extensive search for more common and subtle genetic variants that predispose to sepsis, only a few candidates have been found. Genome-wide association studies in patients with sepsis have been difficult given challenges in the definition of sepsis and the consequent heterogeneity of these patients.<sup>34-36</sup>

Polymorphisms in Toll-like receptor 4 (TLR4) and TLR1 have been associated with increased susceptibility to Gram negative septic shock,<sup>37,38</sup> candidemia,<sup>39,40</sup> and invasive aspergillosis.<sup>41</sup> Interestingly, the Asp299Gly TLR4 polymorphism may confer protection against cerebral malaria. This could explain its increased frequency in people from sub-Saharan Africa,<sup>22</sup> and it might be related to ethnic differences in the incidence and severity of sepsis. NOD2 (nucleotide binding oligomerization domain containing protein 2) and the Asp299Gly variants were additive in increasing the risk of bacteremia and hospital mortality in a study of nearly 800 Belgian ICU patients.<sup>42</sup> A genome-wide association study of 520 patients with septic shock of European ancestry from 27 ICUs from North America and Australia identified only one single nucleotide polymorphism that was associated with increased 28 day mortality and organ dysfunction. This was the C allele of SVEP1 (11% allele frequency in European populations), which encodes a cell adhesion molecule with multiple domains capable of interacting with complement, growth factors, integrins, and cytokines.<sup>43</sup> Finally, in a recent genome-wide association study involving four cohorts of 2500 patients admitted to 143 European ICUs with sepsis, severe sepsis, and septic shock from pneumonia or intra-abdominal infection, a common (20%) variant of the FER gene (Fps/FES related tyrosine kinase, a cytosolic protein thought to be involved in leukocyte recruitment) was associated with increased survival, although only in patients with pneumonia.<sup>44</sup>

### Modifiable risk factors

Alcohol consumption has been shown in adjusted epidemiologic analyses to increase the risk of sepsis and related organ failure and mortality.<sup>45,46</sup> Although tobacco is now a well established risk factor for acute respiratory distress syndrome (ARDS),<sup>47,48</sup> evidence linking smoking to sepsis has been less robust. In a study of 30 000 outpatients observed for a five year period during which 975 cases of sepsis were detected, tobacco use was significantly associated with incident sepsis (hazard ratio 1.9).<sup>49</sup> Cigarette smoking has been associated with a several-fold increase in the risk of invasive pneumococcal disease,<sup>50</sup> and it has been shown to increase the risk of septic shock (odds ratio 2.1) and 30 day mortality (5.0) in pneumo-

Organism	Western Europe	Eastern Europe	Central/South America	North America	Oceania	Africa	Asia
<i>Staphylococcus aureus</i> /MRSA	20/9	22/10	19/11	27/18	28/9	30/20	16/10
<i>Staphylococcus epidermidis</i>	11	12	9	12	8	15	9
<i>Streptococcus pneumoniae</i>	5	5	3	4	3	6	2
VSE	9	10	2	5	4	0	4
VRE	4	5	2	5	5	0	2
<i>Escherichia coli</i>	17	15	14	14	13	11	17
<i>Enterobacter</i> spp	7	8	9	8	3	7	5
<i>Klebsiella</i> spp	10	21	16	9	12	19	21
<i>Pseudomonas</i> spp	17	29	26	13	15	15	29
<i>Acinetobacter</i> spp	6	17	14	4	4	15	19
ESBL producing GNR	2	2	3	0	0	2	3
Anaerobes	5	3	1	8	3	2	3
<i>Candida</i> spp	19	19	13	18	13	11	16
<i>Aspergillus</i> spp	2	0	0	3	2	0	1
Parasites	1	1	1	1	1	0	1

Fig 2 | Common microbiological isolates from the Extended Prevalence of Infection in Intensive Care (EPIC II; % of isolates).<sup>58</sup> Abbreviations: MRSA=methicillin resistant *Staphylococcus aureus*; VRE=vancomycin resistant enterococcus; VSE=vancomycin sensitive enterococcus; ESBL=extended spectrum  $\beta$ -lactamase. Darker boxes indicate prevalence significantly different from that seen in western Europe

coccal pneumonia.<sup>51-52</sup> Smoking also seems to predispose patients to postoperative infections.<sup>53-54</sup> A meta-analysis in 2013 also found that vitamin D deficiency increases the risk of sepsis (relative risk 1.46),<sup>55</sup> although whether supplementation mitigates this risk remains unclear.<sup>56</sup> Finally, vaccination has been shown to reduce the incidence of sepsis caused by specific pathogens, including *Haemophilus influenzae*.<sup>57</sup>

## Causes

### Non-infectious

The term SIRS captures those patients who develop a clinical picture of sepsis without an identifiable infection (fig 1).<sup>2</sup> Many of these patients subsequently develop evidence of infection, but several sterile inflammatory conditions can also progress to shock and multiorgan failure. These include pancreatitis, tissue ischemia, trauma and surgical tissue injury, burns, thromboembolism, vasculitis, drug reactions (including neuroleptic malignant syndrome), and autoimmune and neoplastic processes such as lymphoma and hemophagocytic lymphohistiocytosis.

### Infectious

The Extended Prevalence of Infection in Intensive Care (EPIC II) study gathered extensive demographic, physiological, bacteriological, therapeutic, and outcome data from more than 14 000 adult patients in 1265 ICUs from 75 countries on a single day in May 2007,<sup>58</sup> and it provides the best recent evidence on the infectious causes of sepsis. Of the 7000 patients classified as infected, the site of infection was most commonly the lungs (64%),

followed by the abdomen (20%), bloodstream (15%), and renal or genitourinary tract (14%). Of the 70% of infected patients with positive microbiology, 47% of isolates were Gram positive (*Staphylococcus aureus* alone accounted for 20%), 62% Gram negative (20% *Pseudomonas* spp and 16% *Escherichia coli*), and 19% fungal. Prevalence data are notably limited by the ability to grow and identify organisms using standard microbiologic techniques. For example, *Streptococcus pneumoniae* is thought to be the most common cause of bacterial pneumonia worldwide, yet it is not often identified in clinical specimens.<sup>59</sup> Interestingly, major regional differences in the prevalence of certain drug resistant organisms were described (fig 2), including methicillin resistant *S aureus* (MRSA) and strains of *Klebsiella*, *Pseudomonas*, and *Acinetobacter*.

Several groups have studied the EPIC II data to generate important additional insights into the microbiology of sepsis. Of the 14 000 patients, 99 had candida bloodstream infections, and these patients had much higher ICU mortality (43% v 25-29%) and length of hospital stay than patients with bacteremia.<sup>60</sup> MRSA infections have been independently associated with a hospital mortality nearly 50% higher than methicillin sensitive *S aureus* ones.<sup>61</sup> However, a separate analysis reported that after adjusting for covariates, patients admitted to ICUs in countries with a high prevalence of MRSA and other drug resistant pathogens did not fare worse than those admitted to ICUs in countries with less resistant pathogens.<sup>62</sup> Of the 20% of patients with sepsis and an abdominal infectious source, 64% had undergone emergency surgery, and 67% had positive microbiology, most often Gram negative bacteria



(48%).<sup>63</sup> ICU mortality was highest for abdominal sepsis (29%), and independent mortality predictors included hematologic cancer, cirrhosis, mechanical ventilation, and renal replacement therapy. Finally, a study of the 410 patients in EPIC II who had cirrhosis found a higher prevalence of infection (of which a greater proportion were abdominal), a higher frequency of MRSA infections, and a much higher hospital mortality rate (42% v 24% overall; 71% v 49% for septic shock).<sup>64</sup>

A point prevalence study of pediatric sepsis (SPROUT), similar to EPIC II, which focused on 128 sites in 26 countries, was published in 2015.<sup>65</sup> Of the 569 children with severe sepsis (8.2% prevalence in the pediatric intensive care unit population), the most common primary site of infection was the lungs (40%), followed by the bloodstream (19%), abdomen (8%), central nervous system (4%), and genitourinary system (4%). The most severe cases of sepsis had positive microbiology, including 28% Gram negative bacteria, 27% Gram positive bacteria, 13% fungi (12% candida), and 21% viruses. Nearly 75% required mechanical ventilation, and 45% were receiving corticosteroids. Hospital mortality was 25%, higher than previous estimates,<sup>66</sup> and thus more in line with recent studies in adults.<sup>13</sup>

### Pathogenesis

Much is now known about how sepsis causes organ injury at a molecular, cellular, and organ level.

### Organ and tissue level

As sepsis progresses from a localized infection to mild systemic inflammation and on to septic shock, the cardiovascular system undergoes major perturbations that are well known to intensive care practitioners. With the widespread use of pulmonary arterial catheters in the 1980s,<sup>67</sup> it became clear that after intravascular volume is restored, most patients with sepsis have a normal or raised cardiac output with low systemic vascular resistance. The preservation or enhancement in cardiac output occurs despite acute biventricular dysfunction that can last longer than a week.<sup>68,69</sup> Increased lactate in these patients predicts mortality.<sup>70</sup> This has traditionally been thought to reflect tissue hypoxia as a result of hypoperfusion,<sup>71</sup> a theory that stimulated much of the therapeutic focus during the past three decades on increasing systemic oxygen delivery in the setting of high-normal cardiac output.<sup>72,73</sup> Of note, alternative theories of sepsis induced hyperlactemia, such as aerobic glycolysis driven by enhanced adrenergic tone, have also been advanced.<sup>74,75</sup>

The endothelium can be thought of as an organ that covers an area of nearly 1000 m<sup>2</sup> and has important roles in regulating vasomotor tone, the movement of cells and nutrients into and out of tissues, the coagulation system, and the balance of inflammatory and anti-inflammatory signaling.<sup>76</sup> In sepsis, profound alterations to the endothelium occur, including increased leukocyte adhesion, a shift to a procoagulant state, vasodilation, and loss of barrier function, which all lead to widespread tissue edema.<sup>77</sup>

Microcirculatory alterations include an impaired response to local stimulation, as well as obstruction of

microvessel lumens by microthrombi and plugs of white and red blood cells.<sup>78,79</sup> Widespread tissue factor expression, fibrin deposition, and impaired anticoagulant mechanisms (including activated protein C) can produce disseminated intravascular coagulation (DIC), a syndrome associated with increased organ dysfunction, bleeding (owing to consumption of platelets and clotting factors), and mortality.<sup>80</sup>

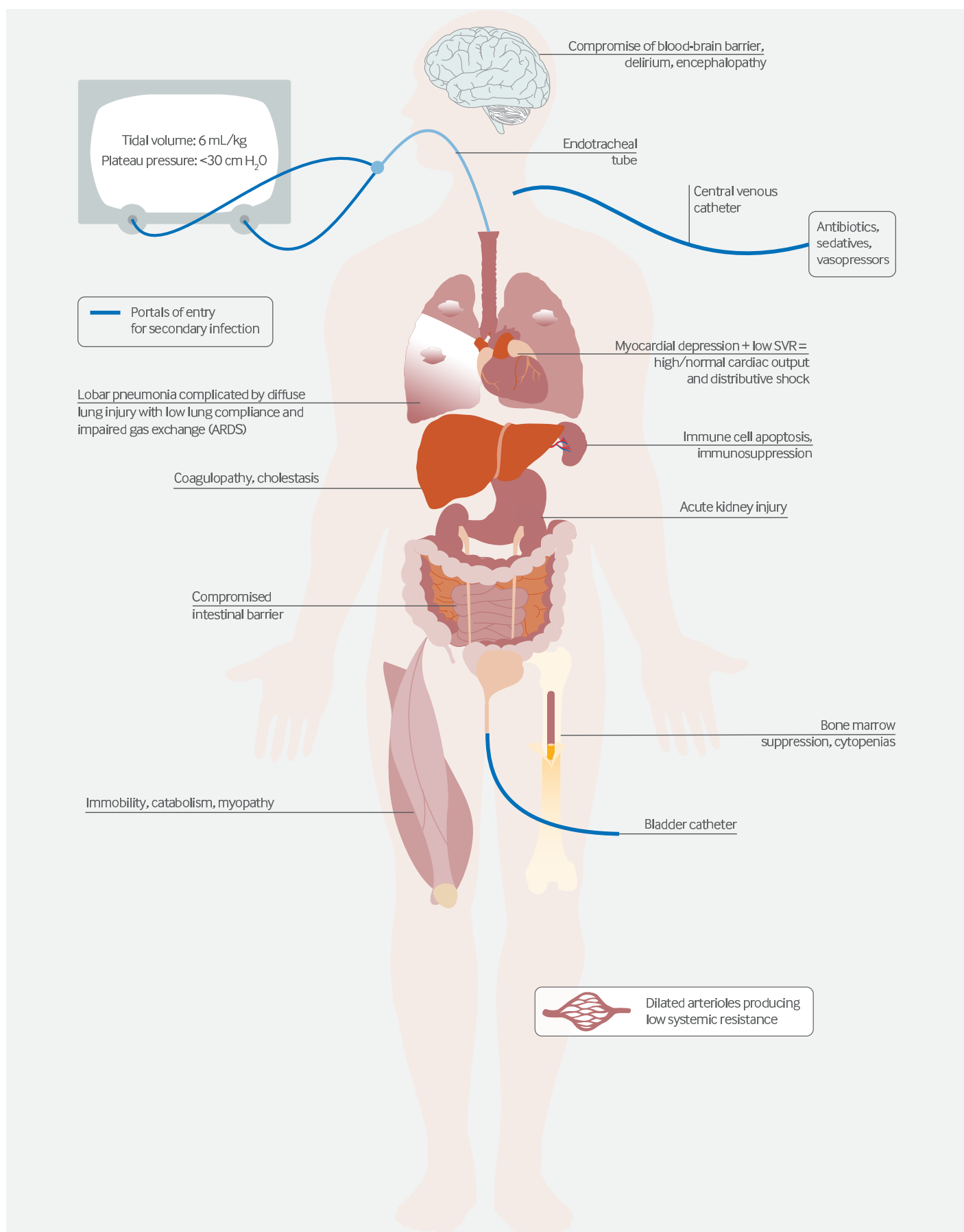
The endothelial changes in severe sepsis are associated with altered barrier function in other organs (fig 3). More permeable lung capillaries result in the accumulation of protein-rich edema fluid in the interstitial spaces of the lung, and in the presence of sepsis induced alveolar epithelial barrier dysfunction, the interstitial edema fluid floods into the alveoli. These changes result in perfusion-ventilation mismatch, arterial hypoxemia, and reduced lung compliance: ARDS.<sup>81</sup>

Combined breakdown of both the endothelial and epithelial barriers extends beyond the lung and is a key mechanism in widespread lethal organ dysfunction.<sup>82</sup> The gut epithelium becomes more permeable in the setting of hypercytokinemia.<sup>83</sup> This increased permeability sets in motion a vicious cycle of bacterial translocation, gut injury by luminal contents including activated pancreatic enzymes (autodigestion),<sup>84</sup> and worsening systemic inflammation that can perpetuate multiple organ dysfunction.<sup>85</sup> Indeed, in a prospective observational study of 47 critically ill patients in Canada, intestinal permeability independently predicted subsequent multiple organ dysfunction.<sup>86</sup> In the liver, sepsis impairs hepatocyte clearance of bilirubin (causing cholestasis) and many other crucial hepatic functions, including the transport and processing of enteric pathogen lipids,<sup>87</sup> further stimulating systemic inflammation.

Acute kidney injury (AKI) is common in severe sepsis and substantially increases the risk of death.<sup>88</sup> Although in the past septic AKI has been attributed to reduced renal perfusion and widespread tubular necrosis, little evidence supports the notion that either of these mechanisms are common or severe enough in sepsis to explain the profound degree of renal impairment.<sup>89,90</sup> Rather, septic AKI seems to involve more complex and subtle mechanisms of cytokine and immune mediated microvascular and tubular dysfunction.<sup>91,92</sup>

The nervous system is not simply an injured bystander in severe sepsis but an active participant in its early development, playing mostly an anti-inflammatory role. Carotid body chemoreceptors, vagal afferents, and brain areas with a constitutively permeable blood barrier respond to local and systemic cytokines, signaling to brainstem nuclei, which in turn send vagal, cholinergic efferents that inhibit inflammatory cytokine production by innate immune cells in the spleen, gut, and elsewhere.<sup>93</sup> Indeed, vagal nerve stimulation has been shown to attenuate cytokine signaling and endothelial injury in animal models of sepsis as well as shock from ischemia-reperfusion, burns, and pancreatitis.<sup>94-97</sup>

Encephalopathy is an early and common clinical finding in severe sepsis that can range from mildly impaired concentration to deep coma.<sup>98</sup> Delirium, as assessed by the confusion assessment method (CAM)-ICU method,



**Fig 3 | Organ failure in a critically ill patient with septic shock from pneumococcal pneumonia. ARDS=acute respiratory distress syndrome**

is very common in ventilated patients,<sup>99</sup> and it is independently associated with mortality and long lasting neurocognitive deficits.<sup>99,100</sup> Infection can cause encephalopathy as a direct result of central nervous system infection, but more often it sets in motion a series of sterile events that perturb neurologic function. Systemic endothelial dysfunction compromises the blood-brain barrier, allowing inflammatory cytokines and cells to enter the brain, causing perivascular edema, oxidative stress, leukoencephalopathy, and widespread neurotransmitter alterations.<sup>101,102</sup> Coincident hepatic and renal dysfunction exacerbate toxin influx into the CNS. In addition, coagulopathy and impaired autoregulation of cerebral blood flow can together produce areas of ischemia and hemorrhage.<sup>103</sup> In a series of 23 patients with septic shock, ischemia and hemorrhage were detected at autopsy in 23 and six patients, respectively.<sup>104</sup>

Finally, the early proinflammatory state in severe sepsis often develops into a later and prolonged state of immune system dysfunction. Spleens harvested from ICU patients who had active sepsis when they died are largely depleted of CD4<sup>+</sup> and CD8<sup>+</sup> T cells, and the remaining splenocytes show marked reductions in stimulated cytokine production.<sup>105</sup> The loss of CD4<sup>+</sup> T cells seems to be mainly the result of apoptosis,<sup>106</sup> and it severely impedes the ability of these patients to mount an appropriate immune response to superimposed infections.<sup>107</sup> Indeed, multiple viruses (including cytomegalovirus, Epstein-Barr virus, herpes simplex virus, and human herpesvirus 6) are often reactivated during the course of the illness, and cytomegalovirus viremia is predictive of fungal infection and 90 day mortality.<sup>108</sup> Similarly, lymphopenia four days after the diagnosis of sepsis is associated with secondary bacterial infection and predicts mortality at 28 days and one year.<sup>109</sup> Thus, it is not surprising that in prolonged sepsis there is a microbiologic trend towards subsequent infection with less virulent organisms.<sup>110</sup>

Septic organ dysfunction often perpetuates critical illness in a self reinforcing manner through several well defined pathways:

- ARDS often requires mechanical ventilation, which itself can further injure the lungs and enhance systemic inflammation<sup>111</sup>
- Sedatives needed to compel compliance with positive pressure ventilation can worsen septic associated encephalopathy and delirium,<sup>112</sup> leading to reduced mobility, worsened catabolism, and severe neuromuscular weakness
- Intestinal barrier dysfunction causes ongoing systemic translocation of pathogenic organisms and impaired nutritional status
- Immune system dysfunction leaves the host—who is commonly being treated with broad spectrum antibiotics and has portals for nosocomial infections (endotracheal tube, intravascular, bladder catheters)—highly susceptible to new infections with resistant bacteria and opportunistic organisms.

The combined effect of these self reinforcing processes (fig 3) explains much of the morbidity of severe sepsis (including the tendency to develop what has been termed

“chronic critical illness”<sup>113</sup>). It has led to the increased emphasis on meticulous, evidenced based supportive critical care, which has probably helped improve outcomes in sepsis.

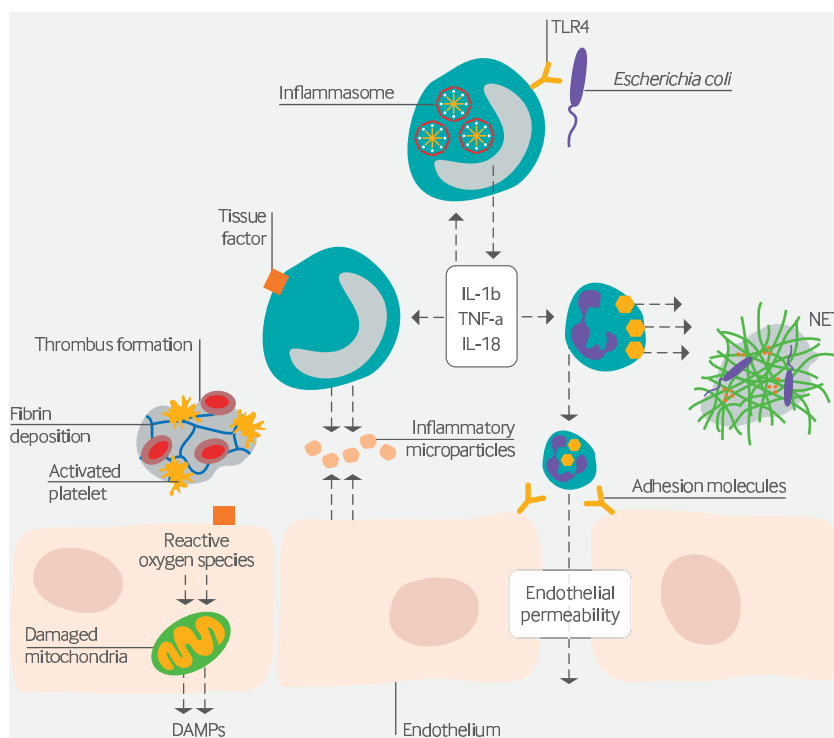
### Cellular and molecular level

The molecular cascades unleashed by severe infection are complex, temporally dynamic, and at least partially dependent on the particular virulence factors of the invading pathogen.<sup>114</sup> A thorough description of infectious agents and inflammatory and cytokine signaling is beyond the scope of this review, and the reader is referred to more thorough reviews as indicated.

Here we summarize some key pathways and themes. One study synthesized and infused recombinant tumor necrosis factor  $\alpha$  (TNF- $\alpha$ , a polypeptide originally named cachectin) into rats. Within three hours the animals developed tachypnea, lactic acidosis, and lethal shock, and they were found to have areas of ischemia and hemorrhage of the lungs, gut, kidneys, pancreas, and adrenal glands.<sup>115</sup> These effects closely resembled the known sequelae of high dose endotoxin administration,<sup>116</sup> thus showing that a single inflammatory macrophage derived cytokine can produce a clinical picture of septic shock. The same research group reported that infusing TNF- $\alpha$  blocking antibody fragments two hours before intravenous injection of *E coli* in anesthetized baboons prevented shock and organ failure.<sup>117</sup> Importantly, this therapeutic effect was lost if the antibody was infused any later than two hours before the bacteria, probably because of the rapid peak and decline of TNF- $\alpha$  signaling. This finding demonstrated the rapidly shifting cytokine milieu in serious infection, and it partly explains the failure of anti-TNF- $\alpha$  agents in the treatment of a heterogeneous population of patients with sepsis in the ICU.<sup>118</sup>

### Inflammatory signaling

The innate immune system, composed mainly of macrophages, monocytes, granulocytes, natural killer cells, and dendritic cells, has evolved to detect pathogen associated molecular patterns (PAMPs; including components of bacterial, fungal, and viral pathogens such as endotoxin and  $\beta$ -glucan) and damage associated molecular patterns (DAMPs; endogenous molecules released from damaged host cells, including ATP, mitochondrial DNA, and high mobility group box 1 or HMGB1). DAMPs and PAMPs activate innate immune and some epithelial cells through pattern recognition receptors on the cell surface (toll-like receptors and C-type lectin receptors) or in the cytosol (NOD-like receptors, RIG-I-like receptors), initiating transcription of type I interferons and proinflammatory cytokines such as TNF- $\alpha$ , interleukin (IL)-1, and IL-6.<sup>119,120</sup> Some of these pattern recognition receptors (mostly NOD-like receptors) can assemble into molecular complexes termed inflammasomes, which are important in the maturation and secretion of the very potent cytokines IL-1 $\beta$  and IL-18, and can trigger highly inflammatory programmed cell death by caspase mediated rapid rupture of the plasma membrane, termed pyroptosis.<sup>121</sup> Proinflammatory cytokines in turn:



**Fig 4 | The self reinforcing pathophysiologic processes involved in sepsis.** Endothelial injury results in activation of monocytes and granulocytes, endothelial barrier breakdown, immunothrombosis, and disseminated intravascular coagulation. DAMPs= damage associated molecular patterns; IL= interleukin; TLR4= Toll-like receptor 4; TNF- $\alpha$ =tumor necrosis factor  $\alpha$

- Increase the numbers, lifespan, and activation state of innate immune cells
- Increase adhesion molecule and chemokine expression by endothelial cells
- Induce many hepatic acute phase proteins such as complement and fibrinogen
- Cause neutrophils to release extracellular traps (NETs), web-like pro-coagulant collections of DNA and antimicrobial proteins and enzymes that form a scaffold for platelet activation<sup>122</sup>
- Cause the release (by activated platelets, endothelial cells, and leukocytes) of microparticles—vesicles that bud from the plasma membrane and contain inflammatory, pro-oxidant, and pro-coagulant lipids and proteins including tissue factor, angiopoietin-2, and von Willebrand factor multimers<sup>123</sup>
- Upregulate tissue factor expression by blood monocytes. In combination with the release of NETs and microparticles mentioned above, intravascular tissue factor expression results in “immunothrombosis,”<sup>124</sup> whereby microbes are trapped within thrombi that in turn attract and further activate leukocytes.

#### Early damage pathways

The inflammatory cytokine response is a highly evolutionarily conserved system that achieves rapid control of minor and localized infections. However, when the response exceeds a certain threshold systemic injury occurs:

- Reactive oxygen species (ROS) such as the hydroxyl radical and nitric oxide can damage cellular proteins, lipids, and DNA, and impair mitochondrial function

- Complement activation (especially C5a) further increases generation of ROS, granulocyte enzyme release, endothelial permeability, and tissue factor expression and may cause the death of adrenal medullary cells<sup>125</sup>
- Widespread immunothrombosis can result in DIC, with resultant impaired microvascular function and organ injury, along with further activation of inflammatory pathways

Thus at the molecular (fig 4) and tissue levels, sepsis is characterized by self reinforcing pathophysiologic processes.

#### Metabolic dysfunction

Even in the most severe, lethal septic shock and multiorgan failure, autopsy series show relatively little cell death outside of lymph tissues.<sup>91</sup> Mitochondrial proteins and DNA are damaged by high levels of ROS, and patients with sepsis have damaged and dysfunctional mitochondria.<sup>91,126</sup> Potentially exacerbated by the toxic effects of antibiotics on mitochondria, ATP levels drop, and to prevent a lethal drop in ATP cells may enter a state similar to hibernation.<sup>127</sup> A generalized reduction in energy expenditure at the cellular level is consistent with retained tissue oxygen tension in sepsis,<sup>74</sup> and this reduction probably exacerbates organ dysfunction as many viable cells reduce their performance of specialized functions. This leads to or exacerbates acute kidney injury, myocardial depression, hepatic dysfunction, encephalopathy, acute lung injury with increased lung endothelial and epithelial permeability to protein, and decreased barrier and transport functions of the gastrointestinal tract.<sup>82</sup>

Catabolism is another increasingly recognized characteristic of severe sepsis. A prospective study of 63 critically ill patients in England documented rapid and substantial loss of muscle mass, especially in patients with multiorgan failure.<sup>128</sup> Pain, corticosteroids, immobility, and inflammatory cytokines all contribute to the rapid breakdown of muscle tissue, liberating amino acids for gluconeogenesis to fuel the glucose dependent proliferation of innate immune cells.<sup>129</sup> Of note, the insulin insensitivity and hyperglycemia characteristic of sepsis and critical illness are proportional to the severity of the insult and may have evolved to ensure that glucose levels in the interstitial space (about 30% lower than in the blood) are adequate to support the massive immune response.<sup>129</sup>

#### Resolution pathways

Compensatory anti-inflammatory cytokine pathways are activated even in the first hours of severe sepsis. IL-10, produced by a variety of leukocytes, suppresses the production of IL-6 and interferon- $\gamma$ , and stimulates the production of soluble TNF receptor and IL-1 receptor antagonist, helping to neutralize potent TNF- $\alpha$  and IL-1 signaling.<sup>120</sup> At the subcellular level, autophagy provides a way to eliminate DAMPs and PAMPs by packaging pathogens and damaged organelles and proteins in vesicles targeted for lysosomal degradation, reducing inflammasome activation.<sup>130</sup>



It has increasingly been recognized that resolution of inflammation after severe infection is not simply a passive process of the fading of inflammatory pathways, but instead involves a coordinated set of cell processes and newly recognized molecular signals. Once the pathogenic organisms have been eliminated from the host, damaged cells and infiltrating leukocytes must be cleared from the tissue. If the signaling milieu is favorable, these cells undergo apoptosis and are engulfed (mostly by macrophages), a process termed efferocytosis, triggering the release of the anti-inflammatory cytokines IL-10 and transforming growth factor  $\beta$ .<sup>131</sup> Recently discovered families of bioactive lipids termed lipoxins, resolvins, protectins, and maresins (also released during efferocytosis) have been shown to reduce ROS, endothelial permeability, and leukocyte recruitment, and further enhance macrophage efferocytosis.<sup>132</sup> Regulatory T cells (Tregs) and myeloid derived suppressor cells may also play important roles in the clearance of cytotoxic cells and production of anti-inflammatory cytokines.<sup>131</sup>

### Treatment

The consistent improvements in survival after sepsis might suggest that a variety of proven, effective treatments had been implemented. However, there are still no approved specific molecular therapies for sepsis. Furthermore, controversy continues to surround nearly every variable in the management of sepsis, with consensus around only a few key points. Broadly speaking, attempts to normalize or enhance various aspects of the physiology of patients with sepsis (gas exchange, glucose control, oxygen delivery) have been either ineffective or harmful, emphasizing the value of large randomized trials to test what initially appear to be intuitively pleasing concepts in critically ill patients.

### Early and effective antimicrobial treatment

In light of current practice, it is remarkable that as recently as the 1980s patients presenting to the emergency department with suspected bacterial meningitis had a median three hour delay in antibiotic administration, with 90% of the delay occurring after the initial encounter with the physician.<sup>133</sup> This delay was commonly caused by waiting for the lumbar puncture results, even when grossly cloudy cerebrospinal fluid was obtained; in community hospitals the delay was often lengthened by the practice of deferring to the admitting internist to order antibiotics after the patient arrived on the hospital ward.

A retrospective review of 2700 Canadian patients admitted with septic shock between 1989 and 2004 found that only 50% received effective antibiotics within six hours of the onset of hypotension.<sup>134</sup> Each hour of delay in antibiotic administration after the onset of shock was associated with a nearly 12% reduction in survival (odds ratio 1.12 per hour delay, 1.103 to 1.136). A more recent retrospective analysis in 2014 of 18000 patients admitted to 165 ICUs with septic shock or severe sepsis also found that adjusted hospital mortality steadily increased as the delay in antibiotic administration increased (one hour: 25.9%, 24.5% to 27.2%; >6 hours: 33.1%, 30.9% to 35.3%).<sup>135</sup>

A meta-analysis in 2015 of 11 studies failed to show increased mortality in patients receiving antibiotics more than one hour (odds ratio 1.46, 0.89 to 2.40) or three hours (1.16, 0.92 to 1.46) after the recognition of severe sepsis or septic shock.<sup>136</sup> However, this study has been criticized for excluding many eligible trials, thereby increasing the chances of signal dilution and bias.<sup>137</sup> The most recent guidelines from the Surviving Sepsis Campaign (SSC) recommend administration of effective intravenous antibiotics within an hour of recognizing severe sepsis or septic shock.<sup>138</sup> Although the precise temporal benefits of antibiotics may be controversial (and unknowable given that a randomized trial would be unethical), there is consensus that effective antibiotics should be given as soon as possible. To meet this goal, hospitals have implemented a variety of screening procedures and protocols to help identify patients with severe sepsis early, rapidly obtain microbiologic samples, and administer broad spectrum antibiotics.

### Resuscitation

Although early prospective randomized trials suggested that boosting oxygen delivery improved outcomes, there were methodological problems.<sup>139</sup> One prospective study of nine patients with sepsis and nine without in whom care was being withdrawn suggested that the oxygen delivery threshold for anaerobic metabolism was similar in patients with and without sepsis (3.8 (standard deviation 1.5) v 4.5 (1.3) mL/min/kg;  $P>0.28$ ) and that it was much lower than suspected.<sup>75</sup> In the mid-1990s, two important trials in heterogeneous populations of critically ill patients targeted either a high mixed venous oxygen saturation or a supranormal cardiac output, finding that so called goal oriented therapy either did not affect survival or significantly reduced it (fig 5).<sup>72 140</sup>

As enthusiasm waned for increasing oxygen delivery to patients with sepsis, an influential single center study was published in 2001 (fig 5) that randomized a more homogeneous group of 263 patients with SIRS and hypotension (or lactate of at least 4 mmol/L) within one to two hours of admission to the emergency department to one of two protocols for six hours.<sup>73</sup> Standard therapy targeted central venous pressure of 8-12 mm Hg, mean arterial pressure of 65-90 mm Hg, and urine output of 0.5 mL/kg/h using crystalloid or colloid infusions and vasopressors. "Early goal directed therapy" (EGDT) targeted the same three parameters as well as a central venous oxygen saturation of 70% using red blood cell transfusions and inotropes as needed. The EGDT group had a 16% absolute improvement in in-hospital mortality (47% v 31%; relative risk 0.58, 0.38 to 0.87). On the basis of this trial, the EGDT protocol was widely adopted (including a grade 1C recommendation from the SSC<sup>138</sup>) and many centers began using specialized catheters to monitor central venous oxygen saturation continuously.

Although outcomes improved with so called sepsis bundles,<sup>150</sup> controversy persisted over whether the resource intensive EGDT protocol was itself effective or instead helped create the systems to recognize sepsis earlier and improve other aspects of care, such as the speed of antibiotic administration. In the past two years, three

Date/ Study (ref)	Intervention	Population,* setting	Primary outcome	Result	Comments
1994 <sup>172</sup>	<b>Hemodynamic management</b> Dobutamine (2–200 µg/kg/min) to achieve cardiac index 4.5 L/min/m <sup>2</sup> , DO <sub>2</sub> 600 mL/min/m <sup>2</sup> , VO <sub>2</sub> >170 mL/min/m <sup>2</sup>	• 100 mixed sepsis, ARDS • 2 ICUs	In-hospital mortality	<b>Harm</b> 34% v 54%; P=0.04	Same trend for harm in ARDS and septic shock subgroups
1995 <sup>140</sup>	<b>Hemodynamic management</b> Three groups: 1. Control: normal cardiac index (2.5–3.5 L/min/m <sup>2</sup> ) 2. Supranormal cardiac index (>4.5) 3. Normal SvO <sub>2</sub> (>70%)	• 762 mixed sepsis, ARDS, hemorrhage • 56 ICUs	ICU mortality	<b>No differences</b> <b>Group 2 v 1:</b> RR 1.01 (0.71–1.43) <b>Group 3 v 1:</b> RR 1.16 (0.82 to 1.64)	Similar results regardless of subgroup including sepsis, septic shock Many intensivists abandoned strategy of targeting supranormal DO <sub>2</sub>
2001 EGDT (Rivers trial) <sup>73</sup>	<b>Early goal directed therapy</b> EGDT algorithm <sup>†</sup> for 6 hours initiated in the ED compared with standard therapy	• 263 severe sepsis • 1 ED	In-hospital mortality	<b>Benefit</b> RR 0.58 (0.38 to 0.87)	Required continuous monitoring of ScvO <sub>2</sub> Highly influential study, protocols adopted into guidelines
2011 FEAST <sup>141</sup>	<b>Fluid resuscitation</b> Three groups: 1. No bolus fluids 2. Bolus 5% albumin 3. Bolus 0.9% saline	• 3141 children with severe febrile illness <sup>‡</sup> • Hospitals in Uganda, Kenya, Tanzania	48 hour mortality	<b>Harm</b> <b>Group 2 v 1:</b> RR 1.45 (1.10 to 1.92); <b>Group 3 v 1:</b> RR 1.44 (1.09 to 1.90)	Similar results at 4 weeks Recruiting hospitals lacked intensive care facilities No subgroup showed benefit from fluid resuscitation
2012 6S Trial <sup>142</sup>	<b>Type of fluid for resuscitation</b> 6% hydroxyethyl starch v Ringer's acetate (control)	• 804 severe sepsis • 26 Scandinavian ICUs	Death or dialysis dependence at 90 days	<b>Harm</b> <b>Death:</b> RR 1.17 (1.01 to 1.36) <b>Dialysis:</b> RR 1.35 (1.01 to 1.80)	
2014 ProCESS <sup>143</sup>	<b>Management of early septic shock</b> Three groups: 1. Usual care 2. EGDT 3. Protocol based standard therapy <sup>§</sup>	• 1341 septic shock • 31 North American EDs	60 day mortality	<b>No differences</b> <b>Group 2 v 3:</b> RR 1.15 (0.88–1.51); <b>Group 3 v 1:</b> RR 1.04 (0.82–1.31)	Severity of illness similar to original EGDT trial
2014 ARISE <sup>144</sup>	<b>Management of early septic shock</b> Usual care v EGDT	• 1600 septic shock • 51 EDs Australia/New Zealand	90 day mortality	<b>No differences</b> AD -0.3% (-4.1% to 3.6%)	
2014 ALBIOS <sup>145</sup>	<b>Type of fluid for resuscitation</b> 20% albumin and crystalloid v crystalloid (control)	• 1818 severe sepsis • 100 Italian ICUs	28 day mortality	<b>No differences</b> RR 1.00 (0.87 to 1.14)	
2014 SEPSISPAM <sup>146</sup>	<b>Blood pressure target (mm Hg)</b> MAP 80–85 v 65–70 (control)	• 776 septic shock • 29 French ICUs	28 day mortality	<b>No differences</b> HR 1.07 (0.84 to 1.38)	Higher MAP group with more atrial fibrillation, less dialysis (in those with chronic hypertension)
2014 TRISS <sup>147</sup>	<b>Hemoglobin target</b> Transfusion threshold of 70 v 90 g/L	• 1005 septic shock • 32 Scandinavian ICUs	90 day mortality	<b>No differences</b> 70 v 90 g/L: RR 0.94 (0.78 to 1.09)	No difference in ischemic events
2015 ProMiSe <sup>148</sup>	<b>Management of early septic shock</b> EGDT v Usual care	• 1260 septic shock • 56 English EDs	90 day mortality	<b>No differences</b> RR 1.01 (0.85 to 1.20)	EGDT increased costs
2015 SPLIT <sup>149</sup>	<b>Type of fluid for resuscitation</b> Buffered crystalloid v saline	• Patients requiring crystalloid • 4 New Zealand ICUs	AKI within 90 days	<b>No differences</b> RR 1.04 (0.80 to 1.36)	Patients low risk for outcome, modest fluid administration

\*The least sick population included (for example, "severe sepsis" implies both severe sepsis and septic shock.)

†See text for protocol description.

‡Fluids and vasopressors were used to achieve heart rate and blood pressure goals, central line optional, hemoglobin target 75 g/L.

§Complicated by prostration/coma, respiratory distress, or both, and impaired perfusion (based on physical examination findings).

Abbreviations: AD=absolute risk difference; AKI=acute kidney injury; ARDS=acute respiratory distress syndrome; DO<sub>2</sub>=oxygen delivery; ED=emergency department; EGDT=early goal directed therapy; HR=hazard ratio; ICU=intensive care unit; MAP=mean arterial pressure; RR=relative risk (numbers in parenthesis are 95% confidence intervals); ScvO<sub>2</sub>=central venous oxygen saturation; SvO<sub>2</sub>=mixed venous oxygen saturation; VO<sub>2</sub>=oxygen consumption.

**Fig 5 | Selected randomized fluid and vasopressor resuscitation trials in sepsis and critical illness<sup>72–149</sup>**

large multicenter randomized controlled trials (RCTs) from the US (ProCESS<sup>143</sup>), the UK (ProMiSe<sup>148</sup>), and Australia and Asia (ARISE<sup>144</sup>) have been published (>4200 patients in total) that each compared the EGDT protocol with usual care (fig 5). These three studies all found that **EGDT did not significantly affect survival**, indicating that other improvements in sepsis and critical care explain the improved outcomes.

Uncertainties still exist regarding the optimal type of fluid, the optimal volume, and the best way to monitor the response to therapy.

#### Fluid type

**Level 1** evidence suggests that **starches** should be **avoided**,<sup>142</sup> and that **albumin** is **not clearly** beneficial relative to crystalloid (fig 5).<sup>145–151</sup> A prospective open label pilot study of 1533 ICU patients during a control

period followed by a six month period of restricted use of high chloride fluids (normal saline, 4% albumin) suggested that **high chloride fluids may cause acute kidney injury** (odds ratio for AKI during restricted period 0.52, 0.37 to 0.75).<sup>152</sup> Although a **recent double blind RCT** of 2278 ICU patients in New Zealand reported **no reduction in AKI** with **buffered crystalloid** compared with **saline** (fig 5), the population was **low** to moderate **risk** for this outcome and exposure to the study fluid was **modest** (mean about 2 L).<sup>149</sup>

#### Resuscitation volume

It is widely considered standard of care to administer several **liters of fluid** in severe sepsis and septic shock (as was the case in all patients in the three recent large trials). **No high quality RCT evidence exists to support this practice**, and a single randomized study of **critically ill children**

in **resource poor** settings lacking advanced therapies for pulmonary edema **questioned** its **safety**.<sup>141</sup> Nonetheless, it remains **expert** opinion that the decrease in septic shock mortality over the past several decades reflects in part the **benefits of early fluid** resuscitation.

#### *Resuscitation adequacy*

Over the past several decades many ICU physicians have moved away from the assessment of static cardiac filling pressures and towards dynamic indices of physiology. These include ultrasound assessments of central venous volume and left ventricular function,<sup>153</sup> although it is worth reiterating that the **evidence basis for trying to augment cardiac output in patients with sepsis is weak**. Furthermore, **excessive fluid** administration in the setting of a more **permeable endothelium** can **exacerbate** organ dysfunction, including the development of acute respiratory failure from ARDS.<sup>154</sup> In addition, **multiple** investigators have shown that **positive fluid balance in these patients** is an independent risk factor for death.<sup>155 156</sup>

**Lactate clearance** was popularized by a 2010 study in 300 patients with sepsis that showed non-inferiority to EGDT,<sup>157</sup> and although **not used** in the **recent three** large negative **trials of EGDT**, many practitioners continue to measure serial lactate values to inform resuscitation targets. The **optimal** systemic **blood pressure** is also unknown, with a recent study reporting that targeting a **mean** arterial pressure of 80-85 mm Hg compared with 60-65 mm Hg **modestly improved renal function**, although rates of **atrial fibrillation** were **increased** and **no difference in survival** was seen (fig 5).<sup>146</sup>

#### *Timing and choice of vasopressors*

It is unclear when vasopressors should be started during the resuscitation of septic shock. Most practitioners give at least 2-3 L crystalloid or colloid to adults before starting a vasopressor. Although some advocate giving more fluid in an attempt to avoid the use of vasopressors, it is worth noting that **vasopressors also constrict the large venous capacitance vessels** and thus **augment cardiac preload** in addition to afterload.<sup>158 159</sup> Although limited by its retrospective design and reliance on complex statistical methods, a recent evaluation of the interaction between fluid and vasopressor administration in nearly 3000 patients with septic shock found that mortality was lowest when vasopressors were started one to six hours after onset and when at least 1 L of fluid was given during the first hour.<sup>160</sup>

A 2011 systematic review of 23 randomized trials of patients with shock found **no convincing evidence for the superiority of one vasopressor over another**.<sup>161</sup> However, an influential meta-analysis from 2012 reported a **higher mortality** associated with **dopamine** than with norepinephrine (**noradrenaline**).<sup>162</sup> Accordingly, the most recent SSC guidelines **recommend norepinephrine** as **first line** agent, epinephrine (**adrenaline**) or **low dose vasopressin** as **second line** agents, and the **avoidance of dopamine** and **phenylephrine** as **empiric** vasopressor therapy.<sup>138</sup>

#### *Transfusion threshold*

ProCESS, ProMISe, and ARISE suggested that a strategy of increasing oxygen delivery with red blood cell transfu-

sions as part of **EGDT** did **not improve survival**. The recent **TRISS** study that randomized nearly 1000 patients with septic shock in **32 Scandinavian ICUs** to a transfusion threshold of **70 or 90 g/L hemoglobin** found **no difference** in 90 day **mortality** or the rate of ischemic events (fig 5).<sup>147</sup>

#### *Other supportive care*

Improvements in general critical care have played a major role in improving outcomes in sepsis.

#### *Lung protective ventilation*

In 2000, low tidal volume ventilation in patients with ARDS was shown to have a marked survival benefit,<sup>163</sup> with an **absolute reduction** in hospital **mortality** of **8.9%**. A subsequent analysis showed that this benefit extended to patients with sepsis who had ARDS.<sup>164</sup> The adoption of low tidal volume, lung protective ventilation in patients with sepsis and ARDS has been a **major factor** in the **improvement in outcomes** over the past 15 years.

#### *Restrictive fluid therapy once initial resuscitation is accomplished*

In a trial of 1000 patients with ARDS randomized to a conservative or liberal fluid management strategy (once out of shock), the **conservatively** managed patients had a **better oxygenation** index and higher number of **ventilator-free days** (14.6 (0.5) v 12.1 (0.5);  $P < 0.001$ ).<sup>154</sup> Notably, there were trends towards improved survival (25.5% v 28.4%,  $P = 0.3$ ) and less dialysis within 60 days in the conservatively managed patients (10% v 14%;  $P = 0.06$ ).

#### *Use of sedatives*

With the recognition that the **excessive** use of **sedatives** is **probably harmful**,<sup>165-167</sup> many hospitals have now implemented protocols to reduce unnecessary sedation. **Awake** patients are more capable of rehabilitation, and the early mobilization of critically ill patients improves delirium and **functional outcomes** as well as reducing the duration of mechanical ventilation.<sup>168</sup>

#### *Catheters and tubes*

Rates of **ventilator associated pneumonia** have decreased, partly because of the **engineering** of endotracheal **tubes** to **decrease biofilm** formation and **microaspiration**,<sup>169</sup> as well as improved oral hygiene.<sup>170</sup> Improvements in intravascular catheter **design**, placement technique, **maintenance**, and timely **removal** have reduced nosocomial infections,<sup>171 172</sup> as have criteria for the **removal** of unnecessary **urinary** catheters.<sup>173</sup>

#### *Nutrition and glucose management*

Despite these advances, several questions remain regarding the optimal supportive care of patients with sepsis. The proper timing and intensity of **nutritional support** remains **unclear**. There is some weak older evidence for reduced infectious complications with enteral feeding,<sup>174</sup> but recent randomized trials report **no benefit with more aggressive enteral or parenteral nutritional** supplementation.<sup>175 176</sup> These results have led the SSC to recommend **enteral** feedings **as tolerated**.<sup>138</sup> Patients with sepsis are often hyperglycemic, yet the **optimal glucose** target is

**unknown.** Notably, targeting a glucose of 80-110 mg/dL (1mg/dL=0.06mmol/L), compared with <180 mg/dL, in a mixed population of 6104 critically ill patients has been shown to increase 90 day mortality (odds ratio 1.14, 1.02 to 1.28),<sup>177</sup> and the **SSC now recommends insulin therapy to maintain glucose <180 mg/dL.**<sup>138</sup>

#### *Additional uncertainties*

Other uncertainties include the optimal sedative regimen and the timing and dose of renal replacement therapy,<sup>178-180</sup> with current guidelines recommending either continuous or intermittent dialysis to help manage fluid balance in patients with septic shock.<sup>138</sup>

#### **Molecular targeted sepsis therapies**

The seminal preclinical TNF- $\alpha$  experiments from the 1980s (see above) generated enthusiasm for the hypothesis that blocking proinflammatory cytokine cascades in sepsis would reduce mortality. However, a subsequent clinical trial in patients with septic shock showed that treatment with **anti-TNF antibodies increased mortality.**<sup>118</sup> Similarly, **corticosteroids** were reported as early as 1976 to reduce mortality in septic shock dramatically,<sup>181</sup> yet after dozens of subsequent trials, there is **still no consensus about efficacy.**<sup>182</sup> This pattern of promising preclinical and early clinical results followed by disappointing large phase III and IV trials has been repeated dozens of times in the past four decades for drugs targeting a variety of cytokine pathways, bacterial virulence factors, and the coagulation cascade (fig 6).<sup>198</sup>

#### **Reasons for failure and possible remedies**

Much has been written about the reasons that most targeted molecular therapies have been unsuccessful in patients,<sup>198-199</sup> and a few key points are worth emphasizing here. Beyond the standard challenges of optimizing pharmacokinetics and length of treatment, sepsis research has been confronted by other serious difficulties.

#### *Patient heterogeneity*

Some researchers have argued that the definition of sepsis using broad clinical criteria results in so much heterogeneity that therapies effective for a “generic” patient with sepsis may be impossible to find.<sup>200</sup> Others have argued that severe sepsis and septic shock may represent distinct disease phenotypes that occur independently rather than on a continuum.<sup>7</sup> But even when clinical criteria are narrowed, challenges remain. Recruiting patients into clinical trials is arduous and time intensive. Although **TNF was shown in preclinical models to rise and fall quickly at the beginning of sepsis,** the clinical trial with etanercept (that demonstrated **harm**) enrolled patients at **varying times after the onset** of sepsis. Even when patients are recruited within a narrow window after admission their presentation may have been delayed, so the true onset of infection is often unknowable. Temporal heterogeneity is a formidable obstacle in trials of anti-inflammatory agents in sepsis because patients tend to **progress** from a state of **inflammatory** cytokines into a state of **immunosuppression**: agents that might be helpful early in a patient’s course could be harmful later.

Heterogeneity also derives from biological variability related to the patient’s:

- Age
- Sex
- Comorbidities including liver and kidney disease and underlying cancer
- Diet and substance misuse, including exposure to cigarette smoke
- Genetics
- Site of infection (especially intravascular v extravascular)<sup>201</sup>
- The pathogen that is causing the sepsis.

Imagine a trial of a novel therapeutic approach to treating confirmed Gram negative septic shock for patients admitted within six hours, a seemingly narrow slice of sepsis. It is likely that large baseline differences in innumerable biological processes would obscure a modest or even strong therapeutic signal for survival if the following patients were compared in the study:

- A 19 year old female athlete who became ill two hours earlier with meningococcal sepsis
- An 80 year old man with dementia and longstanding urinary retention, *E coli* bacteremia, and aspiration pneumonia complicated by ARDS
- A 60 year old man with diverticulitis and an associated abscess but no bacteremia.

Strategies to reduce heterogeneity include limiting enrollment on the basis of the above list of criteria or using biomarkers to help enrich for the targeted underlying pathophysiology. These approaches could be **aided by more thorough analyses of failed phase III trials** (although **data** are often still **held by the drug companies**)<sup>202</sup> to identify subgroups of patients who appeared to derive benefit. Although these kinds of strategies have been used (for example, IL-6 levels to stratify patients in an anti-TNF trial,<sup>184</sup> fig 6) and are probably necessary, they increase the costs of research and reduce the generalizability of the results.

#### *Multiple pathways to injury*

In a remarkable study in which **low dose intravenous endotoxin was given to volunteers** (a seemingly **modest stimulus**), **thousands of genes** in leukocytes were found to undergo **large temporally dynamic changes**,<sup>203</sup> and more recent work has shown similar **complexity** in the changes of **small molecule metabolites.**<sup>204</sup> As outlined in detail above, the molecular cascades and organ dysfunction that often accompany sepsis are **parallel** and often **self reinforcing**. Thus, even when patient heterogeneity is reduced and pathophysiology is conserved, it may be **naïve to expect that blocking one among hundreds of pathways will be sufficient** to produce a measurable clinical **improvement**. Furthermore, **gains** from blocking **one pathway** may be more than **offset** by unintended consequences. For example, **reducing neutrophil recruitment** and activation may **attenuate** injury from **inflammation** at the **expense of reduced bacterial killing** and wider dissemination of infection.

Possible solutions include identifying and **targeting** the **key proximal regulatory pathways** that orchestrate subsequent responses, or alternatively (given the obvi-



## STATE OF THE ART REVIEW

Agent/Study (ref)	Rationale/intervention	Population*	Primary outcome	Result	Comments
ANTI-CYTOKINES					
<b>Etanercept</b> <sup>118</sup>	Escalating doses of a fusion protein of Fc and extracellular domain of TNF receptor that neutralizes the potent inflammatory cytokine TNF	141 septic shock	28 day mortality	<b>Harm</b> Significant dose response† for mortality (P=0.02)	No measurement of TNF-α in the enrolled patients Drug now licensed for a variety of autoimmune diseases
<b>Afelimomab</b> <sup>194</sup>	Monoclonal antibody fragments against TNF-α Stratified by IL-6 level at enrollment	2634 severe sepsis stratified by IL-6	28 day mortality	<b>Mild improvement in patients with raised IL-6</b> OR 0.74 (0.56 to 0.99)	Subsequent 2013 meta-analysis of 15 trials <sup>183</sup> suggested possible modest benefit with antibody (rather than fusion protein) strategies, estimated definitive trial would require 10 000 patients
<b>Anakinra</b> <sup>186</sup>	Recombinant IL-1ra, a monocyte/macrophage protein that specifically inhibits the potent inflammatory cytokine IL-1	696 severe sepsis	28 day mortality	<b>No improvement</b> 36.4% placebo v 33.1% anakinra (P=0.36)	Initiated after a phase III study of 893 less sick patients showed a trend towards improved mortality <sup>185</sup>
ANTI-VIRULENCE FACTORS					
<b>HA-1A CHESS</b> <sup>187</sup>	Monoclonal antibody against the lipid A portion of LPS	2199 septic shock	14 day mortality	<b>No improvement</b> RR 1.08 (0.97 to 1.21)	Same results when the analysis was confined to the 621 patients with Gram negative bacteremia
<b>E5</b> <sup>188</sup>	Monoclonal antibody against a broad range of Gram negative endotoxins	1090 severe sepsis	14 day mortality	<b>No improvement</b> 29.7% E5 v 31.1% placebo (P=0.67)	Enrollment limited to documented or probable Gram negative infection (e.g. feculent peritonitis)
<b>Eritoran ACCESS</b> <sup>189</sup>	Lipid A-like molecule that blocks LPS binding to TLR4	1961 severe sepsis	28 day mortality	<b>No improvement</b> HR 1.05 (0.88 to 1.26)	
AGENTS TARGETING COAGULOPATHY					
<b>Activated protein C (drotrecogin alfa) PROWESS</b> <sup>190</sup>	Promotes fibrinolysis and inhibits thrombosis (may improve microcirculatory disruptions)	1690 severe sepsis	28 day mortality	<b>Benefit</b> ARR 6.1% (1.9% to 10.4%) RR 0.8 (0.69 to 0.94)	Only drug successfully licensed for sepsis Partially adopted into clinical practice but remained controversial: serious bleeding events, ethical concerns about incorporation into guidelines for sepsis bundles <sup>191</sup>
<b>Activated protein C PROWESS-SHOCK</b> <sup>192</sup>	Subgroup analysis from PROWESS suggested greater benefit among sickest patients In part undertaken to answer ongoing questions about benefits and risks	1697 septic shock	28 day mortality	<b>No improvement</b> RR 1.09 (0.92 to 1.28)	Drug withdrawn from the market after publication
<b>Antithrombin III KyberSept</b> <sup>194</sup>	Levels decline rapidly in early sepsis	2314 severe sepsis	28 day mortality	<b>No improvement</b> RR 1.01 (0.91 to 1.11)	Increased bleeding in patients also receiving heparin RR 1.77 (1.43-2.18) A subsequent meta-analysis suggested no benefit and increased bleeding (regardless of concurrent anticoagulation) <sup>193</sup>
<b>Heparin HETRASE</b> <sup>195</sup>	500 units/hour for 7 days	319 sepsis	Length of stay, organ dysfunction	<b>No improvement</b> For hospital mortality: OR 0.85 (0.42 to 1.93)	
IMMUNE STIMULATION					
<b>G-CSF (filgrastim)</b> <sup>196</sup>	Enhances neutrophil production and function	701 severe sepsis and bacterial pneumonia	28 day mortality	<b>No improvement</b> 25.5% placebo v 29.0% G-CSF (P=0.383)	
<b>GM-CSF (sargramostim)</b> <sup>197</sup>	Promotes survival, proliferation, and bacterial phagocytosis by neutrophils and monocytes/macrophages	38 severe sepsis and immunosuppression	Immunologic	Improved mHLA-DR expression and stimulated cytokine production	Reduced expression of mHLA-DR was both a study entry criterion (low levels associated with immune cell dysfunction) and outcome measure Phase III study ongoing (fig 7)

\*The least sick population included (for example "severe sepsis" implies both severe sepsis and septic shock).

†As assessed by the Cochran-Mantel-Haenszel test.

Abbreviations: LPS=lipopolysaccharide; TLR4=toll-like receptor 4; IL-6=interleukin-6; IL-1ra=interleukin-1 receptor antagonist; ARR=absolute risk reduction; GM-CSF=granulocyte-macrophage colony

Fig 6 | Selected randomized pharmacologic trials in sepsis<sup>118-197</sup>

ous practical challenges of delivering therapeutics early enough to accomplish this) intervening in multiple downstream pathways simultaneously. Thus, trials involving combinations of therapies may be needed. Also, point of care testing that would allow **better phenotyping of the patient's clinical and biological profile** could select patients more optimally for trials of new therapeutics, an approach that was recently evaluated in patients with ARDS.<sup>205</sup>

#### *Limitations of preclinical models*

The most commonly used **murine models** of sepsis include endotoxin administration, cecal ligation and puncture, and exogenously administered pathogenic bacteria. Almost without exception **inbred, young healthy animals** are studied, and typically no advanced monitoring is used and **minimal or no supportive care** is **given** (antibiotics, respiratory support including supplemental oxygen, fluid and vasopressor resuscitation, renal replacement therapy). Beyond these obvious differences from the composition and care of patients with sepsis, important species differences probably explain many of the discrepancies between preclinical successes and clinical trial failures in drug development. For example, **mice are notoriously resistant to endotoxin** (a sterile and thus artificial insult), requiring **orders of magnitude higher** doses than are **needed in humans** to cause illness.

An influential study published in 2013 compared the response of transcriptional networks of circulating mouse and human leukocytes to burns, endotoxin, and trauma.<sup>206</sup> After finding **little correlation between human and murine responses**, the authors argued provocatively that translational research should shift away from mouse models. However, several important limitations of this study were highlighted in a recent review that makes a **strong case for enhancing the relevance of murine models** (rather than abandoning them) by including the use of **outbred strains** of **different ages** and shifting **away from endotoxin** models towards **bacterial infections** of the lungs, urinary tract, and abdomen.<sup>207</sup> Other appealing approaches include the use of **larger animal** models (such as **sheep**) with the inclusion of at least some forms of **supportive care**, recognizing that **most patients no longer die of the acute inflammatory response but of subsequent organ failure**.<sup>208</sup>

#### **Emerging treatments**

Several large phase **III** and **IV** clinical trials are currently under way (fig 7). In light of the substantial improvements in sepsis outcomes with advances in supportive critical care, the current trials seek to further optimize fluid, hemodynamic, and sedative management. After many failures of strategies seeking to decrease the inflammatory cascades in early sepsis, the focus of immunomodulatory research has shifted to attempts to **boost immunity during the later phase of immunoparalysis**.

Recognizing that multiple organ failure is responsible for much of the clinical burden of sepsis, early stage research has **increasingly focused on strategies to enhance endothelial and epithelial barrier function**,<sup>211</sup>

**bioenergetics**,<sup>127</sup> and **active inflammation resolution** pathways.<sup>212</sup> One promising approach is the use of **cell based therapies** such as allogeneic **mesenchymal stem** or stromal cells, which have potent **immunomodulatory, antimicrobial, bioenergetic, and barrier enhancing effects**.<sup>213</sup> These cells are currently **being tested** in phase II trials for ARDS<sup>214</sup> and in a Canadian phase I trial in sepsis (NCT02421484).

As the science evolves, we are likely to develop novel therapeutic strategies that optimize the host's response to infection. Simultaneously we must redouble efforts worldwide at more effectively deploying proven infection prevention measures, including access to safe drinking water and sanitation, public health system surveillance and outreach, vector control, and vaccination.<sup>215</sup>

#### **Guidelines and the new sepsis definitions**

The SSC was formed in **2002** as a collaboration of the Society of Critical Care Medicine and the European Society of Intensive Care Medicine. The SSC published its first guidelines in 2004.<sup>216</sup> These guidelines made graded recommendations regarding diagnostics, antibiotics, fluid and vasopressor resuscitation, mechanical ventilation, sedation, and the use of drotrecogin alfa (activated protein C; fig 6). Critics noted that the **SSC derived 90% of its initial funding from Eli Lilly** (maker of drotrecogin alfa), and that **established therapies** such as **antibiotics** and **fluids** received **lower ratings** (owing to lack of RCT evidence) than did **drotrecogin alfa**.<sup>191</sup> In 2005, the SSC began publishing highly influential quality indicators (sepsis bundles) based on their guidelines, which included many components of the EGDT approach,<sup>73</sup> including measurement of central venous oxygen saturation in septic shock. The **SSC has since divested itself of industry support** and has periodically updated its guidelines, most **recently in 2013**.<sup>138</sup> After the publication of ProCESS, ARISE, and ProMISE, the SSC released a **brief update** to its guidelines in April of **2015** ([http://www.survivingsepsis.org/SiteCollectionDocuments/SSC\\_Bundle.pdf](http://www.survivingsepsis.org/SiteCollectionDocuments/SSC_Bundle.pdf)), which puts **less emphasis than EGDT** does on achieving specific hemodynamic goals.

In February **2016**, a **new consensus definition** and clinical criteria for sepsis were issued by the Society of Critical Care Medicine and the European Society of Intensive Care Medicine.<sup>3</sup> Building on previous iterations of consensus definitions, the **new Sepsis-3 definitions eliminate** the **SIRS** category and put more **emphasis on scoring organ dysfunction**. Additionally, a new clinical sepsis screening tool was proposed to identify patients with sepsis outside of the ICU. Developed using logistic regression on established datasets and termed **quick SOFA**, this score still **awaits prospective validation** in diverse clinical settings.<sup>217</sup> The screen is **positive if two** out of the following are true—respiratory rate **>22**, Glasgow coma score **<15**, **systolic blood pressure <100 mm Hg**.<sup>3</sup>

Notably, the syndromes of sepsis and septic shock as newly defined in Sepsis-3 remain broad categorizations that do not separate patients on the basis of pathophysiologic mechanisms. Whether this revised set of diagnostic criteria will improve clinical trial design or the clinical care of patients remains to be determined.

## STATE OF THE ART REVIEW

Registry/Trial/ Completion date	Sites	Agent/intervention	Phase	To enroll*	Primary outcome	Rationale
IMMUNE STIMULATION						
NCT-02361528 GRID 2018	France	GM-CSF (sargramostim)	III	488 severe sepsis with reduced mHLA-DR	ICU acquired infection	Improve immunoparalysis
NCT-01649921 2016	Netherlands	IFN-γ	III	20 septic shock	Stimulated cytokine production	Improve immunoparalysis
COAGULOPATHY						
NCT-01598831 2018	International	Thrombomodulin (ART-123)	III	800 severe sepsis + coagulopathy (INR >1.40)	28 day mortality	Sepsis associated downregulation of endothelial thrombomodulin related to coagulation activation; also with immunomodulatory functions <sup>109</sup>
GLUCOCORTICOIDS						
NCT-01448109 ADRENAL 2016	Australia and New Zealand	Hydrocortisone (200 mg daily for 7 days)	IV	3800 septic shock	90 day mortality	Large trial of low dose steroids hopes to resolve a longstanding area of controversy
SUPPORTIVE: RESUSCITATION						
NCT-02508649 SEPSIS-ACT 2018	Belgium, Denmark, France	Selepressin (vasopressin type 1a receptor agonist)	II/III	1800 septic shock	Vasopressor and ventilator-free days	Similar to vasopressin but with favorable profile on endothelial permeability
NCT-02454348 NOVEL 2018	US	Vasopressin and norepinephrine v norepinephrine alone	IV	418 septic shock	90 day mortality	Previous data support use of vasopressin as add-on therapy
ISRCTN-20769191 VANISH 2015	UK	2x2: Vasopressin v norepinephrine as initial vasopressor and IV hydrocortisone v placebo	IV	412 septic shock	Renal failure-free days through 28 days	Vasopressin may be more effective if used earlier and may prevent kidney injury
ISRCTN-12776039 LeoPARDS 2016	UK	Levosimendan v placebo for 24 hours	IV	516 septic shock	Organ dysfunction (mean SOFA score)	Sensitizes myocardium to calcium without increasing oxygen demand, anti-inflammatory Earlier data showed improved microcirculatory flow, hepatic and renal function
NCT-01797978 2017	South Korea	Methylene blue	III	354 septic shock	28 day mortality	Improves blood pressure in vasopressor refractory shock Enrollment dependent on need for high dose vasopressors (norepinephrine >0.2 µg/kg/min)
NCT-02079402 CLASSIC 2015	Scandinavia	Conservative v liberal fluid resuscitation when shock persists after 30 mL/kg crystalloid	IV	150 septic shock	Resuscitation volume	Targets patients after the initial 6 hours of resuscitation Conservative group with trigger guided fluid boluses rather than hemodynamic guided
NCT-02369900 2019	US	Esmolol titrated to heart rate 80-94 beats/min	II	104 septic shock	Need for vasopressor support at 6 hours	Recent single center trial reported improved survival <sup>210</sup> Patients must require norepinephrine at least 0.1 µg/kg/min
SUPPORTIVE: OTHER						
NCT-01455116 CASS 2016	Denmark	Mild induced hypothermia (32-34°C)	II/III	560 severe sepsis, intubated	30 day mortality	Reduce organ metabolism, microcirculatory thrombosis, bacterial growth
NCT-02317549 SSAIL 2017	US and Canada	Enteral tranexemic acid	II	260 septic shock	Days free of MV, vasopressors, and RRT	Preserves gut integrity by inhibiting digestive enzymes and "autodigestion"
NCT-01046669 EUPHRATES 2017	US and Canada	Extracorporeal treatment of blood with polystyrene composite covalently bonded to polymyxin B	III	650 septic shock with endo-toxemia	28 day mortality	Adsorption of endotoxins
NCT-02389036 SuDDICU 2019	International	Selective decontamination of the digestive tract with antibiotics	III	24,000 mechanically ventilated	Hospital mortality	Some prior evidence for efficacy but concerns about promotion of antibiotic resistance have limited use Trial not limited to patients with sepsis
NCT-01739933 MENDSII 2018	US	Dexmedetomidine v propofol	III	530 severe sepsis	Days free of delirium or coma	Earlier trials suggested propofol or dexmedetomidine were superior to benzodiazepines
NCT-02378545 2015	UK	Oxygen (non-rebreather at 15 L/min v target oxygen saturation of 94%)	IV	300 sepsis	90 day mortality	Rationale exists for both harm and benefit from hyperoxia

\*The least sick population included (for example, "severe sepsis" implies both severe sepsis and septic shock).

Abbreviations: GM-CSF=granulocyte-macrophage colony stimulating factor; ICU=intensive care unit; IFN-γ=interferon γ; INR=international normalized ratio; IV=intravenous; mHLA-DR=monocytic human leukocyte antigen-DR; MV=mechanical ventilation; NIH=National Institutes of Health; RRT=renal replacement therapy; SOFA=sequential organ failure assessment.

**Fig 7 | Selected ongoing randomized trials in sepsis from the NIH clinical trials registry and international standard randomized controlled trials number (ISRCTN) database<sup>209 210</sup>**

## QUESTIONS FOR FUTURE RESEARCH

- What is the optimal fluid and vasopressor resuscitation strategy in the early phase of septic shock?
- Will lung protective ventilation in patients with sepsis reduce the development of acute respiratory distress syndrome?
- Will new treatments reduce the incidence of acute kidney injury in patients with sepsis?
- Can rapid, inexpensive, and specific microbiologic tests for defining causative pathogens be developed using genetic and other approaches?
- Will we develop new effective and safe antibiotics in an era of increasingly common drug resistant pathogens?
- How does the microbiome change in sepsis and how might this be leveraged therapeutically?
- What are the long term physical, cognitive, and psychosocial changes in patients who survive sepsis, and can we develop effective rehabilitative techniques?
- Can we improve the ability of preclinical models of sepsis to predict therapeutic efficacy?
- Can we develop a range of point-of-care biomarkers to group patients with sepsis into pathophysiologic categories? This would improve our understanding of the biology and may enhance clinical trial design
- How will the recently released definitions and clinical criteria for sepsis<sup>3</sup> shape its clinical detection, treatment, and research?

## Conclusions

The study of the impact, pathogenesis, and treatment of sepsis has generated important new insights at every level of analysis. Sepsis remains a common, expensive, and deadly problem throughout the world. It is a complicated and dynamic condition that resists one size fits all approaches. However, despite the failure of many therapeutics in clinical trials, sepsis outcomes have improved substantially with major improvements in supportive care, including rapid recognition of sepsis and delivery of effective antibiotics, resuscitation with fluid therapy in early septic shock, lung protective ventilation, more judicious use of fluid therapy once shock has resolved, better guidelines for blood product transfusion, and enhanced methods to reduce secondary nosocomial infections. Novel therapeutic pathways targeting organ dysfunction hold renewed promise for both septic and sterile inflammation, but thoughtful preclinical approaches will be essential going forward. In addition, to reduce heterogeneity and enhance the prospects of therapeutic efficacy for new treatment strategies, the use of clinical and biological criteria to select and phenotype patients with sepsis for clinical trials will need to be improved.

**Contributors:** JEG performed the literature search, wrote the draft article, and revised the manuscript. MAM edited early and revised versions of the manuscript, contributed as author to sections of the manuscript, and is guarantor.

**Competing interests:** We have read and understood BMJ policy on declaration of interests and declare the following interests: none.

**Provenance and peer review:** Commissioned; externally peer reviewed.

- 1 Bone RC, Sprung CL, Sibbald WJ. Definitions for sepsis and organ failure. *Crit Care Med* 1992;20:724-6. doi:10.1097/00003246-199206000-00002 pmid:1597021.
- 2 American College of Chest Physicians/Society of Critical Care Medicine Consensus Conference: definitions for sepsis and organ failure and guidelines for the use of innovative therapies in sepsis. *Crit Care Med* 1992;20:864-74. doi:10.1097/00003246-199206000-00025 pmid:1597042.
- 3 Singer M, Deutschman CS, Seymour CW, et al. The third international consensus definitions for sepsis and septic shock (sepsis-3). *JAMA* 2016;315:801-10. doi:10.1001/jama.2016.0287. pmid:26903338.
- 4 Levy MM, Fink MP, Marshall JC, et al. SCCM/ESICM/ACCP/ATS/SIS. 2001 SCCM/ESICM/ACCP/ATS/SIS International Sepsis Definitions Conference. *Crit Care Med* 2003;31:1250-6. doi:10.1097/01.CCM.0000050454.01978.3B. pmid:12682500.

- 5 Churpek MM, Zdravcevic FJ, Winslow C, Howell MD, Edelson DP. Incidence and prognostic value of the systemic inflammatory response syndrome and organ dysfunctions in ward patients. *Am J Respir Crit Care Med* 2015;192:958-64. doi:10.1164/rccm.201502-0275OC. pmid:26158402.
- 6 Vincent J-L, Opal SM, Marshall JC, Tracey KJ. Sepsis definitions: time for change. *Lancet* 2013;381:774-5. doi:10.1016/S0140-6736(12)61815-7. pmid:23472921.
- 7 Ulloa L, Tracey KJ. The "cytokine profile": a code for sepsis. *Trends Mol Med* 2005;11:56-63. doi:10.1016/j.molmed.2004.12.007. pmid:15694867.
- 8 Angus DC, Linde-Zwirble WT, Lidicker J, Clermont G, Carcillo J, Pinsky MR. Epidemiology of severe sepsis in the United States: analysis of incidence, outcome, and associated costs of care. *Crit Care Med* 2001;29:1303-10. doi:10.1097/00003246-200107000-00002 pmid:11445675.
- 9 Martin GS, Mannino DM, Eaton S, Moss M. The epidemiology of sepsis in the United States from 1979 through 2000. *N Engl J Med* 2003;348:1546-54. doi:10.1056/NEJMoa022139. pmid:12700374.
- 10 Brun-Buisson C, Meshaka P, Pinton P, Vallet B. EPISEPSIS Study Group. EPISEPSIS: a reappraisal of the epidemiology and outcome of severe sepsis in French intensive care units. *Intensive Care Med* 2004;30:580-8. doi:10.1007/s00134-003-2136-x. pmid:14997295.
- 11 van Gestel A, Bakker J, Verlaar CP, van Hout BA. Prevalence and incidence of severe sepsis in Dutch intensive care units. *Crit Care* 2004;8:R153-62. doi:10.1186/cc2858. pmid:15312213.
- 12 Harrison DA, Welch CA, Eddleston JM. The epidemiology of severe sepsis in England, Wales and Northern Ireland, 1996 to 2004: secondary analysis of a high quality clinical database, the ICNARC Case Mix Programme Database. *Crit Care* 2006;10:R42. doi:10.1186/cc4854. pmid:16542492.
- 13 Kaukonen K-M, Bailey M, Suzuki S, Pilcher D, Bellomo R. Mortality related to severe sepsis and septic shock among critically ill patients in Australia and New Zealand, 2000-2012. *JAMA* 2014;311:1308-16. doi:10.1001/jama.2014.2637. pmid:24638143.
- 14 Sakr Y, Elia C, Mascia L, et al. The influence of gender on the epidemiology of and outcome from severe sepsis. *Crit Care* 2013;17:R50. doi:10.1186/cc12570. pmid:23506971.
- 15 Wichmann MW, Inthorn D, Andress H-J, Schildberg FW. Incidence and mortality of severe sepsis in surgical intensive care patients: the influence of patient gender on disease process and outcome. *Intensive Care Med* 2000;26:167-72. doi:10.1007/s001340050041. pmid:10784304.
- 16 Adrie C, Azoulay E, Francois A, et al. OutcomeRea Study Group. Influence of gender on the outcome of severe sepsis: a reappraisal. *Chest* 2007;132:1786-93. doi:10.1378/chest.07-0420. pmid:17890473.
- 17 Angele MK, Pratschke S, Hubbard WJ, Chaudry IH. Gender differences in sepsis: cardiovascular and immunological aspects. *Virulence* 2014;5:12-9. doi:10.4161/viru.26982. pmid:24193307.
- 18 Barnato AE, Alexander SL, Linde-Zwirble WT, Angus DC. Racial variation in the incidence, care, and outcomes of severe sepsis: analysis of population, patient, and hospital characteristics. *Am J Respir Crit Care Med* 2008;177:279-84. doi:10.1164/rccm.200703-480OC. pmid:17975201.
- 19 Dombrovskiy VY, Martin AA, Sunderram J, Paz HL. Occurrence and outcomes of sepsis: influence of race. *Crit Care Med* 2007;35:763-8. doi:10.1097/01.CCM.0000256726.80998.BF. pmid:17255870.
- 20 Mayr FB, Yende S, Linde-Zwirble WT, et al. Infection rate and acute organ dysfunction risk as explanations for racial differences in severe sepsis. *JAMA* 2010;303:2495-503. doi:10.1001/jama.2010.851. pmid:20571016.
- 21 Ferwerda B, Alonso S, Banahan K, et al. Functional and genetic evidence that the Mal/TIRAP allele variant 180L has been selected by providing protection against septic shock. *Proc Natl Acad Sci U S A* 2009;106:10272-7. doi:10.1073/pnas.0811273106. pmid:19509334.
- 22 Ferwerda B, McCall MBB, Alonso S, et al. TLR4 polymorphisms, infectious diseases, and evolutionary pressure during migration of modern humans. *Proc Natl Acad Sci U S A* 2007;104:16645-50. doi:10.1073/pnas.0704828104. pmid:17925445.
- 23 Martin GSM, Mannino DM, Moss M. The effect of age on the development and outcome of adult sepsis. *Crit Care Med* 2006;34:15-21. doi:10.1097/01.CCM.0000194535.82812.BA. pmid:16374151.
- 24 Lemay ACB, Anzueto A, Restrepo MIM, Mortensen EM. Predictors of long-term mortality after severe sepsis in the elderly. *Am J Med Sci* 2014;347:282-8. doi:10.1097/MAJ.0b013e318295a147. pmid:23689053.
- 25 Brun-Buisson C, Doyon F, Carlet J, et al. French ICU Group for Severe Sepsis. Incidence, risk factors, and outcome of severe sepsis and septic shock in adults. A multicenter prospective study in intensive care units. *JAMA* 1995;274:968-74. doi:10.1001/jama.1995.03530120060042. pmid:7674528.
- 26 Annane D, Aegerter P, Jars-Guincestre MC, Guidet B. CUB-Réa Network. Current epidemiology of septic shock: the CUB-Réa Network. *Am J Respir Crit Care Med* 2003;168:165-72. doi:10.1164/rccm.2201087. pmid:12851245.
- 27 Beale R, Reinhart K, Brunkhorst FM, et al. PROGRESS Advisory Board. Promoting Global Research Excellence in Severe Sepsis (PROGRESS): lessons from an international sepsis registry. *Infection* 2009;37:222-32. doi:10.1007/s15010-008-8203-z. pmid:19404580.



- 28 Tolsma V, Schwebel C, Azoulay E, et al. Sepsis severe or septic shock: outcome according to immune status and immunodeficiency profile. *Chest* 2014;146:1205-13. doi:10.1378/chest.13-2618. PMID:25033349.
- 29 Williams MD, Braun LA, Cooper LM, et al. Hospitalized cancer patients with severe sepsis: analysis of incidence, mortality, and associated costs of care. *Crit Care* 2004;8:R291-8. doi:10.1186/cc2893. PMID:15469571.
- 30 Rosolem MM, Rabello LSCF, Lisboa T, et al. Critically ill patients with cancer and sepsis: clinical course and prognostic factors. *J Crit Care* 2012;27:301-7. doi:10.1016/j.jcrc.2011.06.014. PMID:21855281.
- 31 Zuber B, Tran T-C, Aegerter P, et al. CUB-Réa Network. Impact of case volume on survival of septic shock in patients with malignancies. *Crit Care Med* 2012;40:55-62. doi:10.1097/CCM.0b013e31822d74ba. PMID:21926606.
- 32 Sørensen TIA, Nielsen GG, Andersen PK, Teasdale TW. Genetic and environmental influences on premature death in adult adoptees. *N Engl J Med* 1988;318:727-32. doi:10.1056/NEJM198803243181202. PMID:3347221.
- 33 Netea MG, van der Meer JWM. Immunodeficiency and genetic defects of pattern-recognition receptors. *N Engl J Med* 2011;364:60-70. doi:10.1056/NEJMra1001976. PMID:21208109.
- 34 Meyer NJM. Finding a needle in the haystack: leveraging bioinformatics to identify a functional genetic risk factor for sepsis death. *Crit Care Med* 2015;43:242-3. doi:10.1097/CCM.0000000000000664. PMID:25514715.
- 35 Tang BM, Huang SJ, McLean AS. Genome-wide transcription profiling of human sepsis: a systematic review. *Crit Care* 2010;14:R237. doi:10.1186/cc9392. PMID:21190579.
- 36 Clark MF, Baudouin SV. A systematic review of the quality of genetic association studies in human sepsis. *Intensive Care Med* 2006;32:1706-12. doi:10.1007/s00134-006-0327-y. PMID:16957907.
- 37 Agnese DM, Calvano JE, Hahm SJ, et al. Human toll-like receptor 4 mutations but not CD14 polymorphisms are associated with an increased risk of gram-negative infections. *J Infect Dis* 2002;186:1522-5. doi:10.1086/344893. PMID:12404174.
- 38 Lorenz E, Mira JP, Frees KL, Schwartz DA. Relevance of mutations in the TLR4 receptor in patients with gram-negative septic shock. *Arch Intern Med* 2002;162:1028-32. doi:10.1001/archinte.162.9.1028. PMID:11996613.
- 39 Van der Graaf CA, Netea MG, Morré SA, et al. Toll-like receptor 4 Asp299Gly/Thr399Ile polymorphisms are a risk factor for Candida bloodstream infection. *Eur Cytokine Netw* 2006;17:29-34. PMID:16613760.
- 40 Plantinga TS, Johnson MD, Scott WK, et al. Toll-like receptor 1 polymorphisms increase susceptibility to candidemia. *J Infect Dis* 2012;205:934-43. doi:10.1093/infdis/jir867. PMID:22301633.
- 41 Bochud P-Y, Chien JW, Marr KA, et al. Toll-like receptor 4 polymorphisms and aspergillosis in stem-cell transplantation. *N Engl J Med* 2008;359:1766-77. doi:10.1056/NEJMoa0802629. PMID:18946062.
- 42 Henckaerts L, Nielsen KR, Steffensen R, et al. Polymorphisms in innate immunity genes predispose to bacteremia and death in the medical intensive care unit. *Crit Care Med* 2009;37:192-201. e1-3. doi:10.1097/CCM.0b013e31819263d8. PMID:19050632.
- 43 Nakada TA, Russell JAM, Boyd JHM, Thair SA, Walley KR. Identification of a nonsynonymous polymorphism in the SVEP1 gene associated with altered clinical outcomes in septic shock. *Crit Care Med* 2015;43:101-8. doi:10.1097/CCM.0000000000000604. PMID:25188548.
- 44 Rautanen A, Mills TC, Gordon AC, et al. ESICM/ECCRN GenOSept Investigators. Genome-wide association study of survival from sepsis due to pneumonia: an observational cohort study. *Lancet Respir Med* 2015;3:53-60. doi:10.1016/S2213-2600(14)70290-5. PMID:25533491.
- 45 O'Brien JMM Jr, Lu B, Ali NA, et al. Alcohol dependence is independently associated with sepsis, septic shock, and hospital mortality among adult intensive care unit patients. *Crit Care Med* 2007;35:345-50. doi:10.1097/01.CCM.0000254340.91644.B2. PMID:17205003.
- 46 Henriksen DP, Pottgærd A, Laursen CB, et al. Risk factors for hospitalization due to community-acquired sepsis—a population-based case-control study. *PLoS One* 2015;10:e0124838. doi:10.1371/journal.pone.0124838. PMID:25898024.
- 47 Calfee CSM, Matthay MA, Kangelaris KNM, et al. Cigarette smoke exposure and the acute respiratory distress syndrome. *Crit Care Med* 2015;43:1790-7. doi:10.1097/CCM.0000000000001089. PMID:26010690.
- 48 Calfee CS, Matthay MA, Eisner MD, et al. Active and passive cigarette smoking and acute lung injury after severe blunt trauma. *Am J Respir Crit Care Med* 2011;183:1660-5. doi:10.1164/rccm.201011-1802OC. PMID:21471091.
- 49 Wang HE, Shapiro NI, Griffin R, Safford MM, Judd S, Howard G. Chronic medical conditions and risk of sepsis. *PLoS One* 2012;7:e48307. doi:10.1371/journal.pone.0048307. PMID:23118977.
- 50 Arcavi L, Benowitz NL. Cigarette smoking and infection. *Arch Intern Med* 2004;164:2206-16. doi:10.1001/archinte.164.20.2206. PMID:15534156.
- 51 Garcia-Vidal C, Ardanuy C, Tubau F, et al. Pneumococcal pneumonia presenting with septic shock: host- and pathogen-related factors and outcomes. *Thorax* 2010;65:77-81. doi:10.1136/thx.2009.123612. PMID:19996337.
- 52 Bello S, Menéndez R, Torres A, et al. Tobacco smoking increases the risk for death from pneumococcal pneumonia. *Chest* 2014;146:1029-37. doi:10.1378/chest.13-2853. PMID:24811098.
- 53 Turan A, Mascha EJ, Roberman D, et al. Smoking and perioperative outcomes. *Anesthesiology* 2011;114:837-46. doi:10.1097/ALN.0b013e318210f560. PMID:21372682.
- 54 Blair LJ, Huntington CR, Cox TC, et al. Risk factors for postoperative sepsis in laparoscopic gastric bypass. *Surg Endosc* 2015; published online 1 July. doi:10.1007/s00464-015-4349-9.
- 55 de Haan K, Groeneveld AB, de Geus HR, Egal M, Struijs A. Vitamin D deficiency as a risk factor for infection, sepsis and mortality in the critically ill: systematic review and meta-analysis. *Crit Care* 2014;18:660. doi:10.1186/s13054-014-0660-4. PMID:25475621.
- 56 Bjelakovic G, Gluud LL, Nikolova D, et al. Vitamin D supplementation for prevention of mortality in adults. *Cochrane Database Syst Rev* 2014;1:CD007470. doi:10.1002/14651858.CD007470.pub3. PMID:24414552.
- 57 Georges S, Lepoutre A, Dabernat H, Levy-Bruhl D. Impact of Haemophilus influenzae type b vaccination on the incidence of invasive Haemophilus influenzae disease in France, 15 years after its introduction. *Epidemiol Infect* 2013;141:1787-96. doi:10.1017/S0950268813000083. PMID:23425638.
- 58 Vincent J-L, Rello J, Marshall J, et al. EPIC II Group of Investigators. International study of the prevalence and outcomes of infection in intensive care units. *JAMA* 2009;302:2323-9. doi:10.1001/jama.2009.1754. PMID:19952319.
- 59 Obaro SK, Monteil MA, Henderson DC. The pneumococcal problem. *BMJ* 1996;312:1521-5. doi:10.1136/bmj.312.7045.1521. PMID:8646147.
- 60 Kett DH, Azoulay E, Echeverria PM, Vincent JL. Extended Prevalence of Infection in ICU Study (EPIC II) Group of Investigators. Candida bloodstream infections in intensive care units: analysis of the extended prevalence of infection in intensive care unit study. *Crit Care Med* 2011;39:665-70. doi:10.1097/CCM.0b013e318206c1ca. PMID:21169817.
- 61 Hanberger H, Walther S, Leone M, et al. EPIC II Group of Investigators. Increased mortality associated with methicillin-resistant Staphylococcus aureus (MRSA) infection in the intensive care unit: results from the EPIC II study. *Int J Antimicrob Agents* 2011;38:331-5. doi:10.1016/j.ijantimicag.2011.05.013. PMID:21798720.
- 62 Hanberger H, Antonelli M, Holmbom M, et al. EPIC II Group of Investigators. Infections, antibiotic treatment and mortality in patients admitted to ICUs in countries considered to have high levels of antibiotic resistance compared to those with low levels. *BMC Infect Dis* 2014;14:513. doi:10.1186/1471-2334-14-513. PMID:25245620.
- 63 De Waele J, Lipman J, Sakr Y, et al. EPIC II Investigators. Abdominal infections in the intensive care unit: characteristics, treatment and determinants of outcome. *BMC Infect Dis* 2014;14:420. doi:10.1186/1471-2334-14-420. PMID:25074742.
- 64 Gustot T, Felleiter P, Pickkers P, et al. EPIC II Group of Investigators. Impact of infection on the prognosis of critically ill cirrhotic patients: results from a large worldwide study. *Liver Int* 2014;34:1496-503. doi:10.1111/liv.12520. PMID:24606193.
- 65 Weiss SL, Fitzgerald JC, Pappachan J, et al. Sepsis Prevalence, Outcomes, and Therapies (SPROUT) Study Investigators and Pediatric Acute Lung Injury and Sepsis Investigators (PALISI) Network. Global epidemiology of pediatric severe sepsis: the sepsis prevalence, outcomes, and therapies study. *Am J Respir Crit Care Med* 2015;191:1147-57. doi:10.1164/rccm.201412-2323OC. PMID:25734408.
- 66 Hartman ME, Linde-Zwirble WT, Angus DC, Watson RS. Trends in the epidemiology of pediatric severe sepsis. *Pediatr Crit Care Med* 2013;14:686-93. doi:10.1097/PCC.0b013e3182917fad. PMID:23897242.
- 67 Rabuel C, Mebazaa A. Septic shock: a heart story since the 1960s. *Intensive Care Med* 2006;32:799-807. doi:10.1007/s00134-006-0142-5. PMID:16570145.
- 68 Kimchi A, Ellrodt AG, Berman DS, Riedinger MS, Swan HJ, Murata GH. Right ventricular performance in septic shock: a combined radionuclide and hemodynamic study. *J Am Coll Cardiol* 1984;4:945-51. doi:10.1016/S0735-1097(84)80055-8. PMID:6491086.
- 69 Parker MM, Shelhamer JH, Bacharach SL, et al. Profound but reversible myocardial depression in patients with septic shock. *Ann Intern Med* 1984;100:483-90. doi:10.7326/0003-4819-100-4-483. PMID:6703540.
- 70 Shapiro NI, Howell MD, Talmor D, et al. Serum lactate as a predictor of mortality in emergency department patients with infection. *Ann Emerg Med* 2005;45:524-8. doi:10.1016/j.annemergmed.2004.12.006. PMID:15855951.
- 71 Kraut JA, Madias NE. Lactic acidosis. *N Engl J Med* 2014;371:2309-19. doi:10.1056/NEJMra1309483. PMID:25494270.
- 72 Hayes MA, Timmins AC, Yau EH, Palazzo M, Hinds CJ, Watson D. Elevation of systemic oxygen delivery in the treatment of critically ill patients. *N Engl J Med* 1994;330:1717-22. doi:10.1056/NEJM199406163302404. PMID:7993413.
- 73 Rivers E, Nguyen B, Havstad S, et al. Early Goal-Directed Therapy Collaborative Group. Early goal-directed therapy in the treatment of severe sepsis and septic shock. *N Engl J Med* 2001;345:1368-77. doi:10.1056/NEJMoa010307. PMID:11794169.
- 74 García-Alvarez M, Marik P, Bellomo R. Sepsis-associated hyperlactatemia. *Crit Care* 2014;18:503. doi:10.1186/s13054-014-0503-3. PMID:25394679.

- 75 Ronco JJ, Fenwick JC, Tweeddale MG, et al. Identification of the critical oxygen delivery for anaerobic metabolism in critically ill septic and nonseptic humans. *JAMA* 1993;270:1724-30. doi:10.1001/jama.1993.03510140084034. PMID:8411504.
- 76 Wolinsky H. A proposal linking clearance of circulating lipoproteins to tissue metabolic activity as a basis for understanding atherogenesis. *Circ Res* 1980;47:301-11. doi:10.1161/01.RES.47.3.301. PMID:6996862.
- 77 Aird WC. The role of the endothelium in severe sepsis and multiple organ dysfunction syndrome. *Blood* 2003;101:3765-77. doi:10.1182/blood-2002-06-1887. PMID:12543869.
- 78 Koh IHJ, Menchaca-Diaz JL, Koh TH, et al. Microcirculatory evaluation in sepsis: a difficult task. *Shock* 2010;34(Suppl 1):27-33. doi:10.1097/SHK.0b013e3181e7e80c. PMID:20523273.
- 79 De Backer D, Ortiz JA, Salgado D. Coupling microcirculation to systemic hemodynamics. *Curr Opin Crit Care* 2010;16:250-4. doi:10.1097/MCC.0b013e3181e7e80c. PMID:20179590.
- 80 Levi M. Pathogenesis and treatment of disseminated intravascular coagulation in the septic patient. *J Crit Care* 2001;16:167-77. doi:10.1053/j.jccr.2001.30666. PMID:11815902.
- 81 Matthay MA, Ware LB, Zimmerman GA. The acute respiratory distress syndrome. *J Clin Invest* 2012;122:2731-40. doi:10.1172/JCI60331. PMID:22850883.
- 82 Deutschman CS, Tracey KJ. Sepsis: current dogma and new perspectives. *Immunity* 2014;40:463-75. doi:10.1016/j.immuni.2014.04.001. PMID:24745331.
- 83 Fink MP. Intestinal epithelial hyperpermeability: update on the pathogenesis of gut mucosal barrier dysfunction in critical illness. *Curr Opin Crit Care* 2003;9:143-51. doi:10.1097/00075198-200304000-00011. PMID:12657978.
- 84 Schmid-Schönbein GW, Chang M. The autodigestion hypothesis for shock and multi-organ failure. *Ann Biomed* 2014;42:405-14. doi:10.1007/s10439-013-0891-6. PMID:23989761.
- 85 Hassoun HT, Kone BC, Mercer DW, Moody FG, Weisbrodt NW, Moore FA. Post-injury multiple organ failure: the role of the gut. *Shock* 2001;15:1-10. doi:10.1097/00024382-200115010-00001. PMID:11198350.
- 86 Doig CJ, Sutherland LR, Sandham JD, Fick GH, Verhoef M, Meddings JB. Increased intestinal permeability is associated with the development of multiple organ dysfunction syndrome in critically ill ICU patients. *Am J Respir Crit Care Med* 1998;158:444-51. doi:10.1164/ajrccm.158.2.9710092. PMID:9700119.
- 87 Walley KR, Francis GA, Opal SM, et al. The central role of proprotein convertase subtilisin/kexin type 9 in septic pathogen lipid transport and clearance. *Am J Respir Crit Care Med* 2015;192:1275-86. doi:10.1164/rccm.201505-0876CI. PMID:26252194.
- 88 Alobaidi R, Basu RK, Goldstein SL, Bagshaw SM. Sepsis-associated acute kidney injury. *Semin Nephrol* 2015;35:2-11. doi:10.1016/j.semnephrol.2015.01.002. PMID:25795495.
- 89 Wan L, Bagshaw SM, Langenberg C, Saotome T, May C, Bellomo R. Pathophysiology of septic acute kidney injury: what do we really know? *Crit Care Med* 2008;36(Suppl):S198-203. doi:10.1097/CCM.0b013e318168ccd5. PMID:18382194.
- 90 Ishikawa K, May CN, Gobe G, Langenberg C, Bellomo R. Pathophysiology of septic acute kidney injury: a different view of tubular injury. *Contrib Nephrol* 2010;165:18-27. doi:10.1159/000313740. PMID:20427951.
- 91 Takasu O, Gaut JP, Watanabe E, et al. Mechanisms of cardiac and renal dysfunction in patients dying of sepsis. *Am J Respir Crit Care Med* 2013;187:509-17. doi:10.1164/rccm.201211-1983OC. PMID:23348975.
- 92 Prowle JR, Bellomo R. Sepsis-associated acute kidney injury: macrohemodynamic and microhemodynamic alterations in the renal circulation. *Semin Nephrol* 2015;35:64-74. doi:10.1016/j.semnephrol.2015.01.007. PMID:25795500.
- 93 Tracey KJ. Reflex control of immunity. *Nat Rev Immunol* 2009;9:418-28. doi:10.1038/nri2566. PMID:19461672.
- 94 Borovikova LV, Ivanova S, Zhang M, et al. Vagus nerve stimulation attenuates the systemic inflammatory response to endotoxin. *Nature* 2000;405:458-62. doi:10.1038/35013070. PMID:10839541.
- 95 Ortiz-Pomales YT, Krzyzaniak M, Coimbra R, Baird A, Eliceiri BP. Vagus nerve stimulation blocks vascular permeability following burn in both local and distal sites. *Burns* 2013;39:68-75. doi:10.1016/j.burns.2012.04.004. PMID:22694873.
- 96 Van Westerloo DJ, Giebelen IA, Florquin S, et al. The vagus nerve and nicotinic receptors modulate experimental pancreatitis severity in mice. *Gastroenterology* 2006;130:1822-30. doi:10.1053/j.gastro.2006.02.022. PMID:16697744.
- 97 Bernik TR, Friedman SG, Ochanian M, et al. Cholinergic antiinflammatory pathway inhibition of tumor necrosis factor during ischemia reperfusion. *J Vasc Surg* 2002;36:1231-6. doi:10.1067/mva.2002.129643. PMID:12469056.
- 98 Ziaja M. Septic encephalopathy. *Curr Neurol Neurosci Rep* 2013;13:383. doi:10.1007/s11910-013-0383-y. PMID:23954971.
- 99 Ely EW, Shintani A, Truman B, et al. Delirium as a predictor of mortality in mechanically ventilated patients in the intensive care unit. *JAMA* 2004;291:1753-62. doi:10.1001/jama.291.14.1753. PMID:15082703.
- 100 Pandharipande PP, Girard TD, Jackson JC, et al. BRAIN-ICU Study Investigators. Long-term cognitive impairment after critical illness. *N Engl J Med* 2013;369:1306-16. doi:10.1056/NEJMoa1301372. PMID:24088092.
- 101 Iacobone E, Bailly-Salín J, Polito A, Friedman D, Stevens RD, Sharshar T. Sepsis-associated encephalopathy and its differential diagnosis. *Crit Care Med* 2009;37(Suppl):S331-6. doi:10.1097/CCM.0b013e3181b6ed58. PMID:20046118.
- 102 Sharshar T, Carlier R, Bernard F, et al. Brain lesions in septic shock: a magnetic resonance imaging study. *Intensive Care Med* 2007;33:798-806. doi:10.1007/s00134-007-0598-y. PMID:17377766.
- 103 Schramm P, Klein KU, Falkenberg L, et al. Impaired cerebrovascular autoregulation in patients with severe sepsis and sepsis-associated delirium. *Crit Care* 2012;16:R181. doi:10.1186/cc11665. PMID:23036135.
- 104 Sharshar T, Annane D, de la Grandmaison GL, Brouland JP, Hopkinson NS, Françoise G. The neuropathology of septic shock. *Brain Pathol* 2004;14:21-33. doi:10.1111/j.1750-3639.2004.tb00494.x. PMID:14997934.
- 105 Boomer IS, To K, Chang KC, et al. Immunosuppression in patients who die of sepsis and multiple organ failure. *JAMA* 2011;306:2594-605. doi:10.1001/jama.2011.1829. PMID:22187279.
- 106 Hotchkiss RS, Tinsley KW, Swanson PE, et al. Sepsis-induced apoptosis causes progressive profound depletion of B and CD4+ T lymphocytes in humans. *J Immunol* 2001;166:6952-63. doi:10.4049/jimmunol.166.11.6952. PMID:11359857.
- 107 Cabrera-Perez J, Condotta SA, Badovinac VP, Griffith TS. Impact of sepsis on CD4 T cell immunity. *J Leukoc Biol* 2014;96:767-77. doi:10.1189/jlb.5MR0114-067R. PMID:24791959.
- 108 Walton AH, Muenzer JT, Rasche D, et al. Reactivation of multiple viruses in patients with sepsis. *PLoS One* 2014;9:e98819. doi:10.1371/journal.pone.0098819. PMID:24919177.
- 109 Drewry AM, Samra N, Skrupky LP, Fuller BM, Compton SM, Hotchkiss RS. Persistent lymphopenia after diagnosis of sepsis predicts mortality. *Shock* 2014;42:383-91. doi:10.1097/SHK.0000000000000234. PMID:25051284.
- 110 Otto GP, Sossdorf M, Claus RA, et al. The late phase of sepsis is characterized by an increased microbiological burden and death rate. *Crit Care* 2011;15:R183. doi:10.1186/cc10332. PMID:21798063.
- 111 Slutsky AS, Ranieri VM. Ventilator-induced lung injury. *N Engl J Med* 2013;369:2126-36. doi:10.1056/NEJMra1208707. PMID:24283226.
- 112 Reade MC, Finfer S. Sedation and delirium in the intensive care unit. *N Engl J Med* 2014;370:444-54. doi:10.1056/NEJMra1208705. PMID:24476433.
- 113 Nelson JE, Cox CE, Hope AA, Carson SS. Chronic critical illness. *Am J Respir Crit Care Med* 2010;182:446-54. doi:10.1164/rccm.201002-0210CI. PMID:20448093.
- 114 Moine P, Abraham E. Immunomodulation and sepsis: impact of the pathogen. *Shock* 2004;22:297-308. doi:10.1097/01.shk.0000140663.80530.73. PMID:15377883.
- 115 Tracey KJ, Beutler B, Lowry SF, et al. Shock and tissue injury induced by recombinant human cachectin. *Science* 1986;234:470-4. doi:10.1126/science.3764421. PMID:3764421.
- 116 Dunn DL. Role of endotoxin and host cytokines in septic shock. *Chest* 1991;100(Suppl):164S-8S. doi:10.1378/chest.100.3\_Supplement.164S. PMID:1884642.
- 117 Tracey KJ, Fong Y, Hesse DG, et al. Anti-cachectin/TNF monoclonal antibodies prevent septic shock during lethal bacteraemia. *Nature* 1987;330:662-4. doi:10.1038/330662a0. PMID:3317066.
- 118 Fisher CJ Jr, Agosti JM, Opal SM, et al. The Soluble TNF Receptor Sepsis Study Group. Treatment of septic shock with the tumor necrosis factor receptor:Fc fusion protein. *N Engl J Med* 1996;334:1697-702. doi:10.1056/NEJM199606273342603. PMID:8637514.
- 119 Takeuchi O, Akira S. Pattern recognition receptors and inflammation. *Cell* 2010;140:805-20. doi:10.1016/j.cell.2010.01.022. PMID:20303872.
- 120 Schulte W, Bernhagen J, Bucala R. Cytokines in sepsis: potent immunoregulators and potential therapeutic targets--an updated view. *Mediators Inflamm* 2013;2013:165974. doi:10.1155/2013/165974. PMID:23853427.
- 121 Schroder K, Tschopp J. The inflammasomes. *Cell* 2010;140:821-32. doi:10.1016/j.cell.2010.01.040. PMID:20303873.
- 122 Martinod K, Wagner DD. Thrombosis: tangled up in NETs. *Blood* 2014;123:2768-76. doi:10.1182/blood-2013-10-463646. PMID:24366358.
- 123 Mezzani F, Delabranche X, Asfar P, Toti F. Bench-to-bedside review: circulating microparticles--a new player in sepsis? *Crit Care* 2010;14:236. doi:10.1186/cc9231. PMID:21067540.
- 124 Engelmann B, Massberg S. Thrombosis as an intravascular effector of innate immunity. *Nat Rev Immunol* 2013;13:34-45. doi:10.1038/nri3345. PMID:23222502.
- 125 Ward PA, Gao H. Sepsis, complement and the dysregulated inflammatory response. *J Cell Mol Med* 2009;13:4154-60. doi:10.1111/j.1582-4934.2009.00893.x. PMID:19725914.
- 126 Brealey D, Brand M, Hargreaves I, et al. Association between mitochondrial dysfunction and severity and outcome of septic shock. *Lancet* 2002;360:219-23. doi:10.1016/S0140-6736(02)09459-X. PMID:12133657.
- 127 Singer M. The role of mitochondrial dysfunction in sepsis-induced multi-organ failure. *Virulence* 2014;5:66-72. doi:10.4161/viru.26907. PMID:24185508.
- 128 Puthucherry ZA, Rawal J, McPhail M, et al. Acute skeletal muscle wasting in critical illness. *JAMA* 2013;310:1591-600. doi:10.1001/jama.2013.278481. PMID:24108501.

- 129 Hartl WH, Jauch K-W. Metabolic self-destruction in critically ill patients: origins, mechanisms and therapeutic principles. *Nutrition* 2014;30:261-7. doi:10.1016/j.nut.2013.07.019. pmid:24369911.
- 130 Deretic V, Saitoh T, Akira S. Autophagy in infection, inflammation and immunity. *Nat Rev Immunol* 2013;13:722-37. doi:10.1038/nri3532. pmid:24064518.
- 131 Fullerton JN, O'Brien AJ, Gilroy DW. Pathways mediating resolution of inflammation: when enough is too much. *J Pathol* 2013;231:8-20. doi:10.1002/path.4232. pmid:23794437.
- 132 Levy BD, Serhan CN. Resolution of acute inflammation in the lung. *Annu Rev Physiol* 2014;76:467-92. doi:10.1146/annurev-physiol-021113-170408. pmid:24313723.
- 133 Talan DA, Guterman JJ, Overturf GD, Singer C, Hoffman JR, Lambert B. Analysis of emergency department management of suspected bacterial meningitis. *Ann Emerg Med* 1989;18:856-62. doi:10.1016/S0196-0644(89)80213-6. pmid:2757283.
- 134 Kumar A, Roberts D, Wood KE, et al. Duration of hypotension before initiation of effective antimicrobial therapy is the critical determinant of survival in human septic shock. *Crit Care Med* 2006;34:1589-96. doi:10.1097/01.CCM.0000021796.1.75225.E9. pmid:16625125.
- 135 Ferrer R, Martin-Loeches I, Phillips G, et al. Empiric antibiotic treatment reduces mortality in severe sepsis and septic shock from the first hour: results from a guideline-based performance improvement program. *Crit Care Med* 2014;42:1749-55. doi:10.1097/CCM.0000000000000330. pmid:24717459.
- 136 Sterling SA, Miller WR, Pryor J, Puskarich MA, Jones AE. The impact of timing of antibiotics on outcomes in severe sepsis and septic shock: a systematic review and meta-analysis. *Crit Care Med* 2015;43:1907-15. doi:10.1097/CCM.0000000000001142. pmid:26121073.
- 137 Sivapalan P, Staehr Jensen J-U. Timing of therapy in sepsis: are early antibiotics important for prognosis? *Crit Care Med* 2015;43:2030-1. doi:10.1097/CCM.0000000000001179. pmid:26274712.
- 138 Dellinger RP, Levy MM, Rhodes A, et al. Surviving Sepsis Campaign Guidelines Committee including the Pediatric Subgroup. Surviving sepsis campaign: international guidelines for management of severe sepsis and septic shock: 2012. *Crit Care Med* 2013;41:580-637. doi:10.1097/CCM.0b013e31827e83af. pmid:23353941.
- 139 Ronco JJ, Fenwick JC, Tweeddale MG. Does increasing oxygen delivery improve outcome in the critically ill? No. *Crit Care Clin* 1996;12:645-59. doi:10.1016/S0749-0704(05)70268-2. pmid:8839596.
- 140 Gattinoni L, Brazzi L, Pelosi P, et al. A trial of goal-oriented hemodynamic therapy in critically ill patients. SvO2 Collaborative Group. *N Engl J Med* 1995;333:1025-32. doi:10.1056/NEJM199510193331601. pmid:7675044.
- 141 Maitland K, Kiguli S, Opoka RO, et al. FEAST Trial Group. Mortality after fluid bolus in African children with severe infection. *N Engl J Med* 2011;364:2483-95. doi:10.1056/NEJMoa1101549. pmid:21615299.
- 142 Perner A, Haase N, Guttormsen AB, et al. 6S Trial Group Scandinavian Critical Care Trials Group. Hydroxyethyl starch 130/0.42 versus Ringer's acetate in severe sepsis. *N Engl J Med* 2012;367:124-34. doi:10.1056/NEJMoa1204242. pmid:22738085.
- 143 Yealy DM, Kellum JA, Huang DT, et al. ProCESS Investigators. A randomized trial of protocol-based care for early septic shock. *N Engl J Med* 2014;370:1683-93. doi:10.1056/NEJMoa1401602. pmid:24635773.
- 144 Peake SL, Delaney A, Bailey M, et al. ARISE Investigators ANZICS Clinical Trials Group. Goal-directed resuscitation for patients with early septic shock. *N Engl J Med* 2014;371:1496-506. doi:10.1056/NEJMoa1404380. pmid:25272316.
- 145 Caironi P, Tognoni G, Masson S, et al. ALBIOS Study Investigators. Albumin replacement in patients with severe sepsis or septic shock. *N Engl J Med* 2014;370:1412-21. doi:10.1056/NEJMoa1305727. pmid:24635772.
- 146 Asfar P, Meziani F, Hamel J-F, et al. SEPSISPAM Investigators. High versus low blood-pressure target in patients with septic shock. *N Engl J Med* 2014;370:1583-93. doi:10.1056/NEJMoa1312173. pmid:24635770.
- 147 Holst LB, Haase N, Wetterslev J, et al. TRISS Trial Group Scandinavian Critical Care Trials Group. Lower versus higher hemoglobin threshold for transfusion in septic shock. *N Engl J Med* 2014;371:1381-91. doi:10.1056/NEJMoa1406617. pmid:25270275.
- 148 Mouncey PR, Osborn TM, Power GS, et al. ProMiSe Trial Investigators. Trial of early, goal-directed resuscitation for septic shock. *N Engl J Med* 2015;372:1301-11. doi:10.1056/NEJMoa1500896. pmid:25776532.
- 149 Young P, Bailey M, Beasley R, et al. SPLIT Investigators ANZICS CTG. Effect of a buffered crystalloid solution vs saline on acute kidney injury among patients in the intensive care unit: the SPLIT randomized clinical trial. *JAMA* 2015;314:1701-10. doi:10.1001/jama.2015.12334. pmid:26444692.
- 150 Levy MM, Dellinger RP, Townsend SR, et al. Surviving Sepsis Campaign. The Surviving Sepsis Campaign: results of an international guideline-based performance improvement program targeting severe sepsis. *Crit Care Med* 2010;38:367-74. doi:10.1097/CCM.0b013e3181cb0c0c. pmid:20035219.
- 151 Patel A, Laffan MA, Waheed U, Brett SJ. Randomised trials of human albumin for adults with sepsis: systematic review and meta-analysis with trial sequential analysis of all-cause mortality. *BMJ* 2014;349:g4561. doi:10.1136/bmj.g4561. pmid:25099709.
- 152 Yunos NM, Bellomo R, Hegarty C, Story D, Ho L, Bailey M. Association between a chloride-liberal vs chloride-restrictive intravenous fluid administration strategy and kidney injury in critically ill adults. *JAMA* 2012;308:1566-72. doi:10.1001/jama.2012.13356. pmid:23073953.
- 153 Greenfield N, Balk RA. Evaluating the adequacy of fluid resuscitation in patients with septic shock: controversies and future directions. *Hosp Pract (1995)* 2012;40:147-57. doi:10.3810/hp.2012.04.980. pmid:22615089.
- 154 Wiedemann HP, Wheeler AP, Bernard GR, et al. National Heart, Lung, and Blood Institute Acute Respiratory Distress Syndrome (ARDS) Clinical Trials Network. Comparison of two fluid-management strategies in acute lung injury. *N Engl J Med* 2006;354:2564-75. doi:10.1056/NEJMoa062200. pmid:16714767.
- 155 Vincent J-L, Sakr Y, Sprung CL, et al. Sepsis Occurrence in Acutely Ill Patients Investigators. Sepsis in European intensive care units: results of the SOAP study. *Crit Care Med* 2006;34:344-53. doi:10.1097/01.CCM.0000194725.48928.3A. pmid:16424713.
- 156 de Oliveira FSV, Freitas FGR, Ferreira EM, et al. Positive fluid balance as a prognostic factor for mortality and acute kidney injury in severe sepsis and septic shock. *J Crit Care* 2015;30:97-101. doi:10.1016/j.jccr.2014.09.002. pmid:25269788.
- 157 Jones AE, Shapiro NI, Trzeciak S, Arnold RC, Claremont HA, Kline JA. Emergency Medicine Shock Research Network (EMShockNet) Investigators. Lactate clearance vs central venous oxygen saturation as goals of early sepsis therapy: a randomized clinical trial. *JAMA* 2010;303:739-46. doi:10.1001/jama.2010.158. pmid:20179283.
- 158 Funk DJ, Jacobsen E, Kumar A. Role of the venous return in critical illness and shock: part II-shock and mechanical ventilation. *Crit Care Med* 2013;41:573-9. doi:10.1097/CCM.0b013e31827bfc25. pmid:23263572.
- 159 Persichini R, Silva S, Teboul J-L, et al. Effects of norepinephrine on mean systemic pressure and venous return in human septic shock. *Crit Care Med* 2012;40:3146-53. doi:10.1097/CCM.0b013e318260c6c3. pmid:22926333.
- 160 Waechter J, Kumar A, Lapinsky SE, et al. Cooperative Antimicrobial Therapy of Septic Shock Database Research Group. Interaction between fluids and vasoactive agents on mortality in septic shock: a multicenter, observational study. *Crit Care Med* 2014;42:2158-68. doi:10.1097/CCM.0000000000000520. pmid:25072761.
- 161 Havel C, Arrich J, Losert H, Gamper G, Müllner M, Herkner H. Vasopressors for hypotensive shock. *Cochrane Database Syst Rev* 2011;5:CD003709. doi:10.1002/14651858.CD003709.pub3. pmid:221563137.
- 162 De Backer D, Aldecoa C, Nijimi H, Vincent JL. Dopamine versus norepinephrine in the treatment of septic shock: a meta-analysis. *Crit Care Med* 2012;40:725-30. doi:10.1097/CCM.0b013e31823778ee. pmid:22036860.
- 163 The Acute Respiratory Distress Syndrome Network. Ventilation with lower tidal volumes as compared with traditional tidal volumes for acute lung injury and the acute respiratory distress syndrome. *N Engl J Med* 2000;342:1301-8. doi:10.1056/NEJM200005043421801. pmid:10793162.
- 164 Eisner MD, Thompson T, Hudson LD, et al. Acute Respiratory Distress Syndrome Network. Efficacy of low tidal volume ventilation in patients with different clinical risk factors for acute lung injury and the acute respiratory distress syndrome. *Am J Respir Crit Care Med* 2001;164:231-6. doi:10.1164/ajrccm.164.2.2011093. pmid:11463593.
- 165 Kollef MH, Levy NT, Ahrens TS, Schaiff R, Prentice D, Sherman G. The use of continuous vs sedation is associated with prolongation of mechanical ventilation. *Chest* 1998;114:541-8. doi:10.1378/chest.114.2.541. pmid:9726743.
- 166 Shehabi Y, Bellomo R, Reade MC, et al. Sedation Practice in Intensive Care Evaluation (SPICE) Study Investigators ANZICS Clinical Trials Group. Early intensive care sedation predicts long-term mortality in ventilated critically ill patients. *Am J Respir Crit Care Med* 2012;186:724-31. doi:10.1164/rccm.201203-0522OC. pmid:22859526.
- 167 Kress JP, Pohlman AS, O'Connor MF, Hall JB. Daily interruption of sedative infusions in critically ill patients undergoing mechanical ventilation. *N Engl J Med* 2000;342:1471-7. doi:10.1056/NEJM200005183422002. pmid:10816184.
- 168 Schweickert WD, Pohlman MC, Pohlman AS, et al. Early physical and occupational therapy in mechanically ventilated, critically ill patients: a randomised controlled trial. *Lancet* 2009;373:1874-82. doi:10.1016/S0140-6736(09)60658-9. pmid:19446324.
- 169 Fernandez JF, Levine SM, Restrepo MI. Technologic advances in endotracheal tubes for prevention of ventilator-associated pneumonia. *Chest* 2012;142:231-8. doi:10.1378/chest.11-2420. pmid:22796845.
- 170 Shi Z, Xie H, Wang P, et al. Oral hygiene care for critically ill patients to prevent ventilator-associated pneumonia. *Cochrane Database Syst Rev* 2013;8:CD008367. doi:10.1002/14651858.CD008367.pub2. pmid:23939759.
- 171 Veenstra DL, Saint S, Saha S, Lumley T, Sullivan SD. Efficacy of antiseptic-impregnated central venous catheters in preventing catheter-related bloodstream infection: a meta-analysis. *JAMA* 1999;281:261-7. doi:10.1001/jama.281.3.261. pmid:9918482.
- 172 Pronovost P, Needham D, Berenholtz S, et al. An intervention to decrease catheter-related bloodstream infections in the ICU. *N Engl J Med* 2006;355:2725-32. doi:10.1056/NEJMoa061115. pmid:17192537.
- 173 Galiczewski JM. Interventions for the prevention of catheter associated urinary tract infections in intensive care units: an integrative review. *Intensive Crit Care Nurs* 2016;32:1-11. doi:10.1016/j.iccn.2015.08.007. pmid:26604039.



- 174 Koretz RL, Avenell A, Lipman TO, Braunschweig CL, Milne AC. Does enteral nutrition affect clinical outcome? A systematic review of the randomized trials. *Am J Gastroenterol* 2007;102:412-29. quiz 468. doi:10.1111/j.1572-0241.2006.01024.x. pmid:17311654.
- 175 Rice TW, Wheeler AP, Thompson BT, et al. National Heart, Lung, and Blood Institute Acute Respiratory Distress Syndrome (ARDS) Clinical Trials Network. Initial trophic vs full enteral feeding in patients with acute lung injury: the EDEN randomized trial. *JAMA* 2012;307:795-803. doi:10.1001/jama.2012.137. pmid:22307571.
- 176 Casaer MP, Mesotten D, Hermans G, et al. Early versus late parenteral nutrition in critically ill adults. *N Engl J Med* 2011;365:506-17. doi:10.1056/NEJMoa1102662. pmid:21714640.
- 177 Finfer S, Chittock DR, Su SY, et al. NICE-SUGAR Study Investigators. Intensive versus conventional glucose control in critically ill patients. *N Engl J Med* 2009;360:1283-97. doi:10.1056/NEJMoa0810625. pmid:19318384.
- 178 Fraser GL, Devlin JW, Worby CP, et al. Benzodiazepine versus nonbenzodiazepine-based sedation for mechanically ventilated, critically ill adults: a systematic review and meta-analysis of randomized trials. *Crit Care Med* 2013;41(Suppl 1):S30-8. doi:10.1097/CCM.0b013e3182a16898. pmid:23989093.
- 179 Payen D, Mateo J, Cavaillon JM, Fraisse F, Floriot C, Vicaut E. Hemofiltration and Sepsis Group of the Collège National de Réanimation et de Médecine d'Urgence des Hôpitaux extra-Universitaires. Impact of continuous venovenous hemofiltration on organ failure during the early phase of severe sepsis: a randomized controlled trial. *Crit Care Med* 2009;37:803-10. doi:10.1097/CCM.0b013e3181962316. pmid:19237881.
- 180 Borthwick EMJ, Hill CJ, Rabindranath KS, Maxwell AP, McAuley DF, Blackwood B. High-volume haemofiltration for sepsis. *Cochrane Database Syst Rev* 2013;1:CD008075. doi:10.1002/14651858.CD008075.pub2. pmid:23440825.
- 181 Schumer W. Steroids in the treatment of clinical septic shock. *Ann Surg* 1976;184:333-41. doi:10.1097/0000658-197609000-00011 pmid:786190.
- 182 Patel GP, Balk RA. Systemic steroids in severe sepsis and septic shock. *Am J Respir Crit Care Med* 2012;185:133-9. doi:10.1164/rccm.201011-1897Cl. pmid:21680949.
- 183 Qiu P, Cui X, Sun J, Welsh J, Natanson C, Eichacker PQ. Antitumor necrosis factor therapy is associated with improved survival in clinical sepsis trials: a meta-analysis. *Crit Care Med* 2013;41:2419-29. doi:10.1097/CCM.0b013e3182982add. pmid:23887234.
- 184 Panacek EA, Marshall JC, Albertson TE, et al. Monoclonal Anti-TNF: a Randomized Controlled Sepsis Study Investigators. Efficacy and safety of the monoclonal anti-tumor necrosis factor antibody F(ab')<sub>2</sub> fragment afelimomab in patients with severe sepsis and elevated interleukin-6 levels. *Crit Care Med* 2004;32:2173-82. doi:10.1097/01.CCM.0000145229.59014.6C pmid:15640628.
- 185 Fisher CJ Jr, Dhainaut JF, Opal SM, et al. Recombinant human interleukin 1 receptor antagonist in the treatment of patients with sepsis syndrome. Results from a randomized, double-blind, placebo-controlled trial. Phase III rhIL-1ra Sepsis Syndrome Study Group. *JAMA* 1994;271:1836-43. doi:10.1001/jama.1994.03510470040032 pmid:8196140.
- 186 Opal SM, Fisher CJ Jr, Dhainaut JF, et al. Confirmatory interleukin-1 receptor antagonist trial in severe sepsis: a phase III, randomized, double-blind, placebo-controlled, multicenter trial. The Interleukin-1 Receptor Antagonist Sepsis Investigator Group. *Crit Care Med* 1997;25:1115-24. doi:10.1097/00003246-199707000-00010 pmid:9233735.
- 187 McCloskey RV, Straube RC, Sanders C, Smith SM, Smith CR. CHESSTrial Study Group. Treatment of septic shock with human monoclonal antibody HA-1A. A randomized, double-blind, placebo-controlled trial. *Ann Intern Med* 1994;121:1-5. doi:10.7326/0003-4819-121-1-199407010-00001 pmid:8198341.
- 188 Angus DC, Birmingham MC, Balk RA, et al. E5 murine monoclonal antiendotoxin antibody in gram-negative sepsis: a randomized controlled trial. E5 Study Investigators. *JAMA* 2000;283:1723-30. doi:10.1001/jama.283.13.1723 pmid:10755499.
- 189 Opal SM, Laterre P-F, Francois B, et al. ACCESS Study Group. Effect of eritoran, an antagonist of MD2-TLR4, on mortality in patients with severe sepsis: the ACCESS randomized trial. *JAMA* 2013;309:1154-62. doi:10.1001/jama.2013.2194. pmid:23512062.
- 190 Bernard GR, Vincent JL, Laterre PF, et al. Recombinant human protein C Worldwide Evaluation in Severe Sepsis (PROWESS) study group. Efficacy and safety of recombinant human activated protein C for severe sepsis. *N Engl J Med* 2001;344:699-709. doi:10.1056/NEJM200103083441001. pmid:11236773.
- 191 Eichacker PQ, Natanson C, Danner RL. Surviving sepsis—practice guidelines, marketing campaigns, and Eli Lilly. *N Engl J Med* 2006;355:1640-2. doi:10.1056/NEJMp068197. pmid:17050887.
- 192 Ranieri VM, Thompson BT, Barie PS, et al. PROWESS-SHOCK Study Group. Drotrecogin alfa (activated) in adults with septic shock. *N Engl J Med* 2012;366:2055-64. doi:10.1056/NEJMoa1202290. pmid:22616830.
- 193 Afshari A, Wetterslev J, Brok J, Møller A. Antithrombin III in critically ill patients: systematic review with meta-analysis and trial sequential analysis. *BMJ* 2007;335:1248-51. doi:10.1136/bmj.39398.682500.25. pmid:18037615.
- 194 Warren BL, Eid A, Singer P, et al. KyberSept Trial Study Group. Caring for the critically ill patient. High-dose antithrombin III in severe sepsis: a randomized controlled trial. *JAMA* 2001;286:1869-78. doi:10.1001/jama.286.15.1869 pmid:11597289.
- 195 Jaimes F, De La Rosa G, Morales C, et al. Unfractionated heparin for treatment of sepsis: A randomized clinical trial (The HETRASE Study). *Crit Care Med* 2009;37:1185-96. doi:10.1097/CCM.0b013e31819c06bc. pmid:19242322.
- 196 Root RK, Lodato RF, Patrick W, et al. Pneumonia Sepsis Study Group. Multicenter, double-blind, placebo-controlled study of the use of filgrastim in patients hospitalized with pneumonia and severe sepsis. *Crit Care Med* 2003;31:367-73. doi:10.1097/01.CCM.0000048629.32625.5D. pmid:12576938.
- 197 Meisel C, Scheffold JC, Pschowski R, et al. Granulocyte-macrophage colony-stimulating factor to reverse sepsis-associated immunosuppression: a double-blind, randomized, placebo-controlled multicenter trial. *Am J Respir Crit Care Med* 2009;180:640-8. doi:10.1164/rccm.200903-0363OC. pmid:19590022.
- 198 Fink MP, Warren HS. Strategies to improve drug development for sepsis. *Nat Rev Drug Discov* 2014;13:741-58. doi:10.1038/nrd4368. pmid:25190187.
- 199 Marshall JC. Why have clinical trials in sepsis failed? *Trends Mol Med* 2014;20:195-203. doi:10.1016/j.molmed.2014.01.007. pmid:24581450.
- 200 Vincent J-L, Martinez EO, Silva E. Evolving concepts in sepsis definitions. *Crit Care Nurs Clin North Am* 2011;23:29-39. doi:10.1016/j.ccell.2010.12.002. pmid:21316566.
- 201 Munford RS. Severe sepsis and septic shock: the role of gram-negative bacteremia. *Annu Rev Pathol* 2006;1:467-96. doi:10.1146/annurev.pathol.1.110304.100200. pmid:18039123.
- 202 Drazen JM. Transparency for clinical trials—the TEST Act. *N Engl J Med* 2012;367:863-4. doi:10.1056/NEJMe1209433. pmid:22873430.
- 203 Calvano SE, Xiao W, Richards DR, et al. Inflamm and Host Response to Injury Large Scale Collab. Res. Program. A network-based analysis of systemic inflammation in humans. *Nature* 2005;437:1032-7. doi:10.1038/nature03985. pmid:16136080.
- 204 Kamisoglu K, Sleight KE, Calvano SE, Coyle SM, Corbett SA, Androulakis IP. Temporal metabolic profiling of plasma during endotoxemia in humans. *Shock* 2013;40:519-26. doi:10.1097/SHK.0000000000000063. pmid:24089011.
- 205 Calfee CS, Delucchi K, Parsons PE, Thompson BT, Ware LB, Matthay MA. NHLBI ARDS Network. Subphenotypes in acute respiratory distress syndrome: latent class analysis of data from two randomised controlled trials. *Lancet Respir Med* 2014;2:611-20. doi:10.1016/S2213-2600(14)70097-9. pmid:24853585.
- 206 Seok J, Warren HS, Cuenca AG, et al. Inflammation and Host Response to Injury, Large Scale Collaborative Research Program. Genomic responses in mouse models poorly mimic human inflammatory diseases. *Proc Natl Acad Sci U S A* 2013;110:3507-12. doi:10.1073/pnas.1222878110. pmid:23401516.
- 207 Osuchowski MF, Remick DG, Lederer JA, et al. Abandon the mouse research ship? Not just yet! *Shock* 2014;41:463-75. doi:10.1097/SHK.0000000000000153. pmid:24569509.
- 208 Efron PA, Mohr AM, Moore FA, Moldawer LL. The future of murine sepsis and trauma research models. *J Leukoc Biol* 2015;98:945-52. doi:10.1189/jlb.5MR0315-127R. pmid:26034205.
- 209 Levi M, Van Der Poll T. Thrombomodulin in sepsis. *Minerva Anesthesiol* 2013;79:294-8. pmid:23241735.
- 210 Morelli A, Ertmer C, Westphal M, et al. Effect of heart rate control with esmolol on hemodynamic and clinical outcomes in patients with septic shock: a randomized clinical trial. *JAMA* 2013;310:1683-91. doi:10.1001/jama.2013.278477. pmid:24108526.
- 211 Mehta D, Ravindran K, Kuebler WM. Novel regulators of endothelial barrier function. *Am J Physiol Lung Cell Mol Physiol* 2014;307:L924-35. doi:10.1152/ajplung.00318.2014. pmid:25381026.
- 212 Serhan CN, Chiang N, Dalili J, Levy BD. Lipid mediators in the resolution of inflammation. *Cold Spring Harb Perspect Biol* 2014;7:a016311. doi:10.1101/cshperspect.a016311. pmid:25359497.
- 213 Lombardo E, van der Poll T, DelaRosa O, Dalemans W. Mesenchymal stem cells as a therapeutic tool to treat sepsis. *World J Stem Cells* 2015;7:368-79. doi:10.4252/wjcs.v7.i2.368. pmid:25815121.
- 214 Liu KD, Wilson JG, Zhuo H, et al. Design and implementation of the START (STem cells for ARDS Treatment) trial, a phase 1/2 trial of human mesenchymal stem/stromal cells for the treatment of moderate-severe acute respiratory distress syndrome. *Ann Intensive Care* 2014;4:22. doi:10.1186/s13613-014-0022-z. pmid:25593740.
- 215 Esposito S, Durando P, Bosis S, Ansaldi F, Tagliabue C, Icardi G. ESCMID Vaccine Study Group (EVASG). Vaccine-preventable diseases: from paediatric to adult targets. *Eur J Intern Med* 2014;25:203-12. doi:10.1016/j.ejim.2013.12.004. pmid:24389370.
- 216 Dellinger RP, Carlet JM, Masur H, et al. Surviving Sepsis Campaign Management Guidelines Committee. Surviving Sepsis Campaign guidelines for management of severe sepsis and septic shock. *Crit Care Med* 2004;32:858-73. doi:10.1097/01.CCM.0000117317.18092.E4 pmid:15090974.
- 217 Abraham E. New definitions for sepsis and septic shock: continuing evolution but with much still to be done. *JAMA* 2016;315:757-9. doi:10.1001/jama.2016.0290. pmid:26903333.