



Excluding infection through procalcitonin testing improves outcomes of congestive heart failure patients presenting with acute respiratory symptoms: Results from the randomized ProHOSP trial



Philipp Schuetz^a, Alexander Kutz^{a,*}, Eva Grolimund^a, Sebastian Haubitz^a, Désirée Demann^a, Alaadin Vögeli^a, Fabienne Hitz^a, Mirjam Christ-Crain^b, Robert Thomann^c, Claudine Falconnier^d, Claus Hoess^e, Christoph Henzen^f, Robert J. Marlowe^g, Werner Zimmerli^d, Beat Mueller^a, for the ProHOSP Study Group¹

^a University Department of Medicine, Kantonsspital Aarau, Switzerland

^b Department of Internal Medicine, Division of Endocrinology, Diabetes and Clinical Nutrition, University Hospital Basel, Switzerland

^c Department of Internal Medicine, Bürgerspital Solothurn, Switzerland

^d Basel University Medical Clinic Liestal, Switzerland

^e Department of Internal Medicine, Kantonsspital Münsterlingen, Switzerland

^f Department of Internal Medicine, Kantonsspital Lucerne, Switzerland

^g Spencer-Fontayne Corporation, Jersey City, NJ, USA

ARTICLE INFO

Article history:

Received 24 February 2014

Received in revised form 13 May 2014

Accepted 20 June 2014

Available online 27 June 2014

Keywords:

Acute heart failure
Differential diagnosis
Antibiotic therapy
Antibiotic stewardship

ABSTRACT

Background/objectives: We sought to determine whether exclusion of infection and antibiotic stewardship with the infection biomarker procalcitonin improves outcomes in congestive heart failure (CHF) patients presenting to emergency departments with respiratory symptoms and suspicion of respiratory infection.

Methods: We performed a secondary analysis of patients with a past medical history of CHF formerly included in a Swiss multicenter randomized-controlled trial. The trial compared antibiotic stewardship according to a **procalcitonin algorithm** or **state-of-the-art guidelines (controls)**. The primary endpoint was a 30-day adverse outcome (death, intensive care unit admission); the secondary endpoints included a 30-day antibiotic exposure. **Results:** In the 110/233 analyzed patients (47.2%) with **low initial procalcitonin (≤ 0.25 $\mu\text{g/L}$)**, suggesting the absence of systemic bacterial infection, those randomized to procalcitonin guidance ($n = 50$) had a **significantly lower adverse outcome rate** compared to **controls** ($n = 60$): **4% vs. 20%** (absolute difference -16.0% , 95% confidence interval (CI) -28.4% to -3.6% , $P = 0.01$), and significantly reduced antibiotic exposure [days] (mean 3.7 ± 4.0 vs. 6.5 ± 4.4 , difference -2.8 [95% CI, -4.4 to -1.2], $P < 0.01$). When initial procalcitonin was **≥ 0.25 $\mu\text{g/L}$** , procalcitonin-guided patients had significantly reduced antibiotic exposure due to **early stop of therapy without any difference in adverse outcomes** (25.8% vs. 24.6%, difference [95% CI] 1.2% [-14.5% to 16.9% , $P = 0.88$]).

Conclusions: CHF patients presenting to the emergency department with respiratory symptoms and suspicion for respiratory infection had decreased antibiotic exposure and improved outcomes when procalcitonin measurement was used to exclude bacterial infection and guide antibiotic treatment. These data provide further evidence for the potential **harmful effects of antibiotic / fluid treatment when used instead of diuretics and heart failure medication** in clinically symptomatic CHF patients without underlying infection.

© 2014 Elsevier Ireland. Ltd. All rights reserved.

1. Introduction

Respiratory symptoms such as cough, sputum production, dyspnea, tachypnea or pleuritic pain are among the most frequent complaints

Abbreviations: AHF, acute heart failure; BACH, Biomarkers in Acute Heart Failure trial; CHF, congestive heart failure; CI, confidence interval; ED, emergency room; ICU, intensive care unit; LRTI, lower respiratory infection; OR, odds ratio; PCT, procalcitonin; SD, standard deviation.

* Corresponding author at: University Department of Medicine, Kantonsspital Aarau, Tellstrasse, CH-5001 Aarau, Switzerland. Tel.: +41 62 838 6866; fax: +41 62 9525.

E-mail address: kutz.alexander@gmail.com (A. Kutz).

¹ Other members are listed in the Acknowledgments section.

in patients presenting to emergency departments (EDs) [1], but are non-specific to the underlying medical condition. In patients with such symptoms, particularly those with a history of congestive heart failure (CHF), **differentiating acute heart failure (AHF) from lower respiratory tract infection (LRTI) is challenging**, due to the **overlapping clinical picture and radiological findings** [2]. Yet, rapid, accurate differential diagnosis is of utmost importance, as delayed targeted therapy [3] or inadequate therapy [4] increase the risk for adverse patient outcome. **LRTI is found in only an appreciable minority of patients presenting to hospital with worsening CHF**. Importantly, however, such **infection significantly increases mortality risk** in these patients: in one very large ($n = 48,612$) population-based study [5], LRTI had a

15.3% prevalence in CHF patients and an odds ratio (OR) of 1.60 (95% confidence interval [CI], 1.38 to 1.85, $P < 0.001$) for in-hospital death.

A novel approach to identify probable systemic bacterial infection in need of antibiotic therapy is the measurement of circulating serum procalcitonin (PCT) levels [6,7]. This biomarker is up-regulated in response to microbial toxins and certain bacterial-specific proinflammatory mediators, e.g., interleukin-1b, tumor necrosis factor- α and interleukin-6 [8]. In contrast, PCT expression is attenuated by the cytokines typically released in viral infections, e.g., interferon- γ [9,10]. Therefore PCT measurements both flag the presence and track the status of systemic bacterial infection, helping the clinician determine the necessity and optimal duration of antibiotic therapy in patients with respiratory symptoms [8–12]. Several studies have documented the benefits of PCT testing in emergency department patients presenting with fever [13] and respiratory symptoms [7,14,15] among others with regard to faster infection diagnosis, more accurate risk stratification, and optimization of the treatment.

Interestingly, the large, multinational, multicenter Biomarkers in Acute Heart Failure (BACH) trial of 1641 patients presenting to the ED with dyspnea [4] found significantly higher adjusted 90-day all-cause mortality rates in patients with a primary diagnosis of AHF ($n = 568$) who were not given antibiotics despite PCT elevation ($>0.21 \mu\text{g/L}$) than in patients with PCT elevation who were given these drugs ($P = 0.046$). Conversely, patients with PCT within the healthy general population reference range ($<0.05 \mu\text{g/L}$, 97.5th percentile) [16], but who nonetheless were given antibiotics, had significantly higher adjusted 90-day all-cause mortality rates than did their untreated counterparts with low PCT ($P = 0.049$). Although BACH was an observational study, which does not allow inference of causality, these results nonetheless prompt speculation that inadequate therapy, including inappropriate use or inappropriate withholding of antibiotics, may affect mortality in heart failure patients.

We therefore performed a secondary analysis investigating the effects of using PCT to help guide antibiotic treatment decisions in patients with a past medical history of CHF and suspicion of respiratory infection. We studied patients who participated in a previously-concluded antibiotic stewardship trial in individuals presenting to the ED with acute respiratory symptoms – ProHOSP [17]. Like BACH, ProHOSP was a large ($n = 1359$), prospective, multicenter study. Unlike BACH, however, ProHOSP had a randomized, controlled, interventional design, which allows clearer connections to be drawn between PCT monitoring and the outcome of CHF patients with acute respiratory symptoms.

2. Methods

2.1. ProHOSP

Details of ProHOSP's design have been published elsewhere [18]. Briefly, we consecutively recruited adults (age ≥ 18 years) with presumed LRTI of <28 days' duration who presented to EDs at any of six Swiss secondary or tertiary care, academic or non-academic hospitals from October 2006 to March 2008. Patients had to have come from the community or a nursing home with one or more of cough, sputum production, dyspnea, tachypnea, or pleuritic pain, plus at least one finding during auscultation (rales, crepitation) or one sign of infection (core body temperature >38.0 °C, shivering, leukocyte count >10 or <4 cells $\times 10^9/\text{L}$). Patients were excluded for active intravenous drug abuse, severe immunosuppression other than corticosteroids, potentially imminently life-threatening medical comorbidity, or hospital-acquired pneumonia, defined as a new chest radiographic infiltrate occurring ≥ 48 h after hospital admission or after prior hospitalization within 14 days before enrollment. Ongoing chronic antibiotic treatment at presentation also was a ground for exclusion, but short-term antibiotic pretreatment did not affect eligibility.

Patients were stratified by study center and presumed type of LRTI, and randomized 1:1 to antibiotic administration according to either i) state-of-the-art evidence-based guidelines tailored to the patient's putative type of LRTI (control group) [19–22] or ii) a previously validated algorithm [23,24] recommending antibiotics only if PCT levels were elevated (PCT group) [18]. Specifically, the PCT algorithm discouraged initiation of antibiotics when PCT was $<0.25 \mu\text{g/L}$, strongly so when the level was $<0.1 \mu\text{g/L}$. Conversely, the algorithm encouraged this intervention when PCT was $\geq 0.25 \mu\text{g/L}$, strongly so when the level was $>0.5 \mu\text{g/L}$. During follow-up, all patients in the PCT group had repeated PCT testing, and the algorithm recommended an early stop of antibiotics when PCT dropped to $<0.25 \mu\text{g/L}$. For patients with initial PCT $>10 \mu\text{g/L}$, the algorithm recommended

halting antibiotics when PCT concentration had decreased to $\geq 80\%$, strongly so when the decrease was $\geq 90\%$. The algorithm could be overruled by the treating physician for predefined clinical reasons [18]. Throughout the course of care, the choice of antibiotic regimen for PCT or control patients was at their treating physician's discretion.

PCT was measured in all patients in both randomization arms, but results were communicated only to the treating physicians of patients in the PCT group, via website and together with an antibiotic treatment recommendation based on the algorithm. PCT determinations were scheduled to take place in samples drawn at presentation in the entire study cohort. In inpatients not started on antibiotics, follow-up PCT measurements were made in samples obtained 6–24 h post-admission, while in those on antibiotics, PCT was assessed in samples taken on hospitalization days 3, 5 and 7, so long as antibiotic therapy was ongoing. Outpatients were to have follow-up measurements only if no clinical improvement occurred, in which case PCT was to be determined in samples obtained 24–72 h post-ED presentation.

PCT results were routinely available around the clock within 1–2 h of blood sampling. Measurements were performed at each study center's accredited laboratory by staff blinded to any non-laboratory patient data; an automated rapid sensitive assay (Kryptor PCT; Thermo Fisher Scientific [formerly B·R·A·H·M·S AG], Hennigsdorf, Germany) with a $0.02 \mu\text{g/L}$ detection limit, $0.06 \mu\text{g/L}$ functional assay sensitivity, and <20 min incubation time was used.

Upon each patient's presentation, data regarding baseline characteristics, comorbidities, laboratory and vital parameters, radiological results, and current medication were assembled. Comorbidities were identified through patient report and medical chart review.

2.2. Analyzed patients and endpoints

This analysis included all patients enrolled in ProHOSP with a history of CHF (based on patient report and medical chart review, or both) and available initial PCT measurements. The primary endpoint was “adverse outcome”, a composite comprising ICU admission, all-cause mortality, or both, within 30 days after study inclusion. Secondary endpoints, all within the same time frame, were 1) total duration of antibiotic exposure (via any administration route); 2) antibiotic-related side effects including diarrhea, nausea, vomiting, and allergic reactions, as judged by the treating physician; and 3) aggregate hospital length-of-stay (ward, ICU or both). Outcomes were assessed during the hospital stay by study physicians not blinded to the patient's group, and through structured phone interviews at day 30 by medical students blinded to the randomization arm.

An independent committee monitored safety and adverse events during the trial. ProHOSP's protocol was approved by participating centers' ethics committees; patients provided written informed consent, including allowing the use of their data in anonymized secondary analyses such as this one. ProHOSP was registered in the “Current Controlled Trials Database” (identifier ISRCTN 95122877; <http://www.controlled-trials.com/ISRCTN95122877>).

2.3. Statistics

Our primary hypothesis was, based on results of the observational BACH trial [4], that in patients with a history of CHF presenting to the ED with acute respiratory symptoms, PCT-aided antibiotic stewardship would improve clinical outcomes, namely, reduce ICU admissions and mortality, by enhancing diagnostic assessment and decision-making regarding starting or continuing antibiotics. To explore relationships among PCT levels, antibiotic treatment or lack thereof, and outcomes, patients were prospectively divided into two groups: those with initial PCT $<0.25 \mu\text{g/L}$ (“low”, indicating minimal likelihood of systemic bacterial infection) versus $\geq 0.25 \mu\text{g/L}$ (“elevated”, indicating a high probability of systemic bacterial infection). This cut-off was based on ProHOSP's PCT threshold for recommended antibiotic therapy [23]. Within each of these two cut-off groups, we compared patients randomized to the PCT arm or the control arm of ProHOSP. To study differences in primary and secondary endpoints between randomization groups within the low or elevated PCT groups, we used chi-square tests for categorical variables and Student t-test for continuous variables. We calculated 95% CIs for the absolute differences between groups. We also calculated ORs and their 95% CIs through logistic regression analysis. Additionally, for illustration, we present Kaplan–Meier plots of times to adverse outcome.

Discrete variables are expressed as counts (percentages) or vice versa, continuous variables, as means and standard deviations (SDs). All reported CIs are two-sided; tests were carried out at the two-sided 5% significance level. Analyses were performed with STATA 9.2 (Stata Corp, College Station, Texas, USA).

3. Results

3.1. Analyzed patients

Of 1359 patients enrolled in ProHOSP, 233 (17.1%) were identified as having a history of CHF and were thus included in this analysis. The presumed respiratory diagnoses included pneumonia (68%), COPD exacerbation (14%), bronchitis (10%) and other respiratory infections (8%). Besides CHF, these patients had a high prevalence of other cardiovascular disease and risk factors, and were virtually all treated as inpatients (Table 1). Members of the PCT-guided group ($n = 116$) or the control

Table 1
Patient characteristics in the overall study sample and by ProHOSP randomization group.

Characteristics	All patients (n = 233)	PCT group (n = 116)	Control group (n = 117)	P
Demographic characteristics				
Age, median (IQR), years	81.0 (14.0)	80.5 (14.5)	81.0 (13.0)	0.70
Male, % (n)	61.8% (144)	65.5% (76)	58.1% (68)	0.25
Coexisting illnesses, % (n)^a				
Coronary heart disease	41.6% (97)	42.2% (49)	41.0% (48)	0.85
Cerebrovascular disease	10.3% (24)	11.2% (13)	9.4% (11)	0.65
Peripheral artery disease	12.0% (28)	8.6% (10)	15.4% (18)	0.11
Chronic renal failure	32.6% (76)	33.6% (39)	31.6% (37)	0.75
Diabetes mellitus	22.7% (53)	24.1% (28)	21.4% (25)	0.64
Chronic obstructive pulmonary disease	50.2% (117)	43.1% (50)	57.3% (67)	0.03
Cardiovascular risk factors				
Current or former tobacco user, % (n)	20.5% (46)	23.3% (27)	16.2% (19)	0.16
Pack years, median (IQR)	40.0 (25.0)	40.0 (30.0)	40.0 (25.0)	0.53
Body mass index > 25 kg/m ² , % (n)	67.8% (158)	63.8% (74)	71.8% (84)	0.19
Clinical history, % (n)				
Antibiotic pretreatment on presentation	24.8% (57)	21.7% (25)	27.8% (32)	0.29
Cough	84.5% (197)	84.5% (98)	84.6% (99)	0.84
Dyspnea	84.1% (196)	81.9% (95)	86.3% (101)	0.40
New York Heart Association class				
I	7.3% (17)	6.9% (8)	7.7% (9)	0.82
II	19.3% (45)	22.4% (26)	16.2% (19)	0.23
III	37.3% (87)	32.8% (38)	41.9% (49)	0.15
IV	20.2% (47)	19.8% (23)	20.5% (24)	0.90
Fever or chills	48.1% (112)	49.1% (57)	47.0% (55)	0.75
Clinical findings				
Confusion, % (n)	6.0% (14)	7.8% (9)	4.3% (5)	0.31
Respiratory rate, median (IQR), breaths/min	20 (11)	22 (10)	20 (10)	0.89
Systolic blood pressure, median (IQR), mm Hg	130 (33)	130 (32)	130 (34)	0.77
Diastolic blood pressure, median (IQR), mm Hg	74 (21)	74 (24)	74 (16)	0.81
Heart rate, median (IQR), beats/min	92 (27)	91 (29)	93 (30)	0.34
Rales during auscultation, % (n)	77.3% (180)	78.4% (91)	76.1% (89)	0.95
Body temperature, median (IQR), °C	37.8 (1.7)	37.8 (1.8)	37.8 (1.5)	0.56
Initial laboratory findings, median (IQR) unless indicated otherwise				
PCT, µg/L	0.27 (0.92)	0.30 (1.14)	0.24 (0.52)	0.25
PCT ≥ 0.25 µg/L, % (n)	52.8% (123)	56.9% (66)	48.7% (57)	0.21
Pro-atrial natriuretic peptide, pmol/L	331.0 (301.0)	355.0 (315.5)	317.0 (229.0)	0.25
White blood cell count, cells × 10 ⁹ /L	11.1 (7.2)	11.4 (7.5)	11.1 (6.9)	0.27
C-reactive protein, mg/L	104.3 (150.0)	109.0 (156.0)	99.3 (143.5)	0.54
Treatment site, % (n)				
Inpatient	97.9% (228)	98.3% (114)	97.4% (114)	0.66

PCT, procalcitonin; and IQR, interquartile range.

^a All comorbidity data were based on patient report and medical chart review. Due to inclusion criteria for the present analysis, all patients had a history of CHF.

group (n = 117) in ProHOSP were well-balanced ($P \geq 0.11$) regarding all tested demographic, anamnestic, clinical, and laboratory variables, site-of-care, or prevalence of LRTI or AHF as the final diagnosis, except that the control group had a significantly higher prevalence of chronic obstructive pulmonary disease (Table 1). The groups also were similar regarding the proportions presenting at each study site (data not shown). Blood culture, sputum culture and urine antigen testing showed evidence of typical respiratory pathogens (mainly *Streptococcus pneumoniae*) in 28 patients (12.0%).

Median PCT levels (µg/L) in the low PCT group were 0.14, 0.13, 0.10 and 0.10 without any difference between randomization arms ($P > 0.05$ for all comparisons). In the high PCT group, median PCT levels were 0.99, 0.63, 0.31 and 0.19; again without any difference between randomization groups ($P > 0.05$ for all comparisons).

3.2. Outcomes: All analyzed patients

Of the 233 analyzed patients, 45 (19.3%) in total reached the primary endpoint of adverse outcome within 30 days of ED presentation, including all-cause mortality in 22 (9.4%) (occurring in the hospital in 20 [8.6%]) and ICU admission in 27 (11.6%). Four of these patients (1.7%) reached both outcomes.

Overall, mortality or ICU admission combined was non-significantly lower in the PCT group than in controls: 16.4% (19/116) versus 22.2% (26/117), $P = 0.26$, -5.8% absolute difference (95% CI -16.0% to

4.4%). On average, antibiotic exposure (by any administration route) was significantly shorter in PCT-guided patients versus controls: 6.2 versus 8.4 days, absolute difference -2.1 days (95% CI -3.5 to -0.8 days, $P < 0.01$). Antibiotic side effect incidence was 18.1% in the PCT group compared to 34.2% among the controls ($P < 0.01$) (absolute difference -16.1% [-27.3% to -4.9%]). Mean total hospital length-of-stay in survivors was similar, 13.4 [± 0.8] days versus 12.5 [± 0.8] days (absolute difference of 0.9 days, 95% CI -1.3 to 3.1 days, $P = 0.25$).

3.3. Patients with initial PCT < 0.25 µg/L

The 110 patients (47.2%) with low initial PCT, indicating a probable absence of systemic bacterial infection, were well balanced between the PCT group and the control group (Table 2). As seen in Table 3 and Fig. 1, the PCT-guided group had a significantly lower adverse outcome rate and significantly shorter antibiotic exposure than did controls. The PCT-guided group also had lower 30-day all-cause mortality and antibiotic side effect incidence and duration, but these differences did not reach significance. The groups had similar hospital length-of-stay. Additionally, result of a time to event analysis was similar where the time to the first adverse outcome was significantly longer in the PCT-guided group (Fig. 2).

This significant finding was also confirmed in logistic regression analysis where PCT testing had an odds ratio (OR) of 0.17 (95% CI 0.04, 0.79, $P = 0.02$) for adverse outcome. This was also true when adjusting

Table 2

Patient characteristics by ProHOSP randomization group in patients with low PCT values (<0.25 µg/L) (n = 110).

Characteristics	PCT group (n = 50)	Control group (n = 60)	P
Demographic characteristics			
Age, median (IQR), years	79.0 (20.0)	77.5 (14.0)	0.78
Male, % (n)	66.0% (33)	50.0% (30)	0.09
Coexisting illnesses, % (n)^a			
Coronary heart disease	44.0% (22)	43.3% (26)	0.94
Cerebrovascular disease	12.0% (6)	5.0% (3)	0.18
Peripheral artery disease	6.0% (3)	21.7% (13)	0.20
Chronic renal failure	16.0% (8)	25.0% (15)	0.25
Diabetes mellitus	30.0% (15)	20.0% (12)	0.23
Chronic obstructive pulmonary disease	44.0% (22)	60.0% (36)	0.09
Cardiovascular risk factors			
Current or former tobacco user, % (n)	18.0% (9)	18.3% (11)	0.97
Pack years, median (IQR)	40.0 (40.0)	40.0 (20.0)	0.83
Body mass index > 25 kg/m ² , % (n)	74.0% (37)	70.0% (42)	0.64
Clinical history, % (n)			
Antibiotic pretreatment on presentation	20.0% (10)	25.0% (15)	0.53
Cough	88.0% (44)	91.7% (55)	0.51
Dyspnea	80.0% (40)	88.3% (53)	0.32
New York Heart Association class			
I	6% (3)	6.7% (4)	0.89
II	20% (10)	20.0% (12)	1.00
III	40% (20)	38.3% (23)	0.86
IV	14.0% (7)	23.3% (14)	0.22
Fever or chills	40.0% (20)	36.7% (22)	0.73
Clinical findings			
Confusion, % (n)	4.0% (2)	3.6% (2)	0.86
Respiratory rate, median (IQR), breaths/min	20 (9)	20 (12)	0.87
Systolic blood pressure, median (IQR), mm Hg	130 (28)	135 (33)	0.31
Diastolic blood pressure, median (IQR), mm Hg	75 (19)	78 (16)	0.46
Heart rate, median (IQR), beats/min	83 (24)	90 (30)	0.20
Rales during auscultation, % (n)	68.0% (34)	70.0% (42)	0.55
Body temperature, median (IQR), °C	37.5 (1.8)	37.4 (1.6)	0.51
Initial laboratory findings, median (IQR) unless indicated otherwise			
PCT, µg/L	0.13 (0.09)	0.14 (0.09)	0.75
Pro-atrial natriuretic peptide, pmol/L	372.0 (398.0)	298.0 (226.0)	0.13
White blood cell count, cells × 10 ⁹ /L	10.5 (4.6)	10.1 (5.8)	0.24
C-reactive protein, mg/L	72.2 (94.0)	83.0 (88.0)	0.87
Treatment site, % (n)			
Inpatient	98% (49)	100% (60)	0.27

PCT, procalcitonin; and IQR, interquartile range.

^a All comorbidity data were based on patient report and medical chart review. Due to inclusion criteria for the present analysis, all patients had a history of CHF.

the analysis for type of infection (i.e., COPD) (OR 0.19 [95% CI 0.04, 0.91, P = 0.037]).

In addition, we also investigated the effects of PCT testing in different subgroups representing different probabilities for bacterial infections. As demonstrated in Fig. 3, in patients with normal WBC (≤10 G/L),

normal body temperature (<38 °C) and no history of fever the effect of PCT testing on outcome was more favorable compared to patients with higher WBC, higher temperature and fever. Only in patients with low PCT, however, were these effects significant.

3.4. Patients with initial PCT ≥0.25 µg/L

Among patients with elevated initial PCT, indicating probable systemic infection, the group randomized to PCT guidance or the control group was well-balanced, except that larger proportions of the controls were overweight/obese and had New York Heart Association class III dyspnea (Table 4). The PCT-guided group had significantly shorter antibiotic courses and overall lower antibiotic side effect incidence as compared to control patients. There was no difference in clinical outcomes of patients between the randomization groups (Table 5, Fig. 1).

4. Discussion

Discriminating acute LRTI from AHF in patients with past medical history of CHF presenting to the ED with respiratory symptoms and suspicion of infection is difficult because of overlapping and non-specific physical exam and chest radiological abnormalities. Incorrect differentiation may have dramatic consequences because patients with LRTIs are potentially volume-depleted and thus require fluids along with antibiotic therapy, whereas AHF patients have fluid overload and require diuretics, among other medications.

The present analysis may help address this diagnostic difficulty in emergency care through its main finding, that in patients with CHF and low initial PCT values (<0.25 µg/L), antibiotic stewardship aided by measuring that blood biomarker was associated with significantly less frequent adverse outcome, defined as death or ICU admission. Specifically, PCT guidance was associated with a reduction in adverse outcome incidence from 20% to 4% in PCT-guided patients relative to controls. These groups were similar in all tested characteristics, but differed significantly regarding antibiotic exposure – which was lower in the PCT-guided patients. These observations suggest that ruling out LRTI, and hence, avoiding misuse of antibiotic therapy, through PCT measurement may be associated with improved clinical outcomes of CHF patients presenting to the ED with respiratory symptoms. Interestingly, a subgroup analysis found the most effects of PCT testing in patients with low probability for bacterial infection, i.e. patients with low PCT levels, low WBC levels, low body temperature and no history of fever. In these patients a biomarker such as PCT may help to rule out bacterial pneumonia and thus improve the therapeutic management.

4.1. Context

These results accord with observations in BACH [4] that patients with past medical history of CHF presenting to the ED with

Table 3

Primary and secondary endpoints by initial PCT value and ProHOSP treatment group assignment: Patients with low initial PCT (<0.25 µg/L) (n = 110). Bold value indicate significance at p < 0.05.

Outcomes	PCT group (n = 50)	Control group (n = 60)	Absolute difference, PCT group vs. control group (95% CI)	P
Primary endpoint				
30-Day adverse outcome (all-cause mortality, ICU admission or both), % (n)	4.0% (2)	20.0% (12)	−16.0% (−28.4% to −3.6%)	0.01
Secondary endpoints				
30-Day all-cause mortality, % (n)	4.0% (2)	11.7% (7)	−7.7% (−18.1% to 2.7%)	0.14
30-Day antibiotic exposure (days), mean ± SD	3.7 ± 4.0	6.5 ± 4.4	−2.8 (−4.4 to −1.2) days	<0.01
30-Day reported antibiotic-related side effects ^a				
Incidence of reported side effects, % (n)	14.0% (7)	28.3% (17)	−14.3% (−29.9% to 1.2%)	0.07
Duration of reported side effects (days), mean ± SD	3.0 ± 1.4	4.0 ± 3.2	−1.0 (−6.0 to 4.0) days	0.68
Hospital length-of-stay (hospital survivors only) (days), mean ± SD	(n = 48) 12.7 ± 8.3	(n = 53) 10.9 ± 7.1	1.9 (−1.2 to 4.9) days	0.23

CI, confidence interval; ICU, intensive care unit; and SD, standard deviation. Numbers may not add exactly due to rounding.

^a As assessed by the attending physicians.

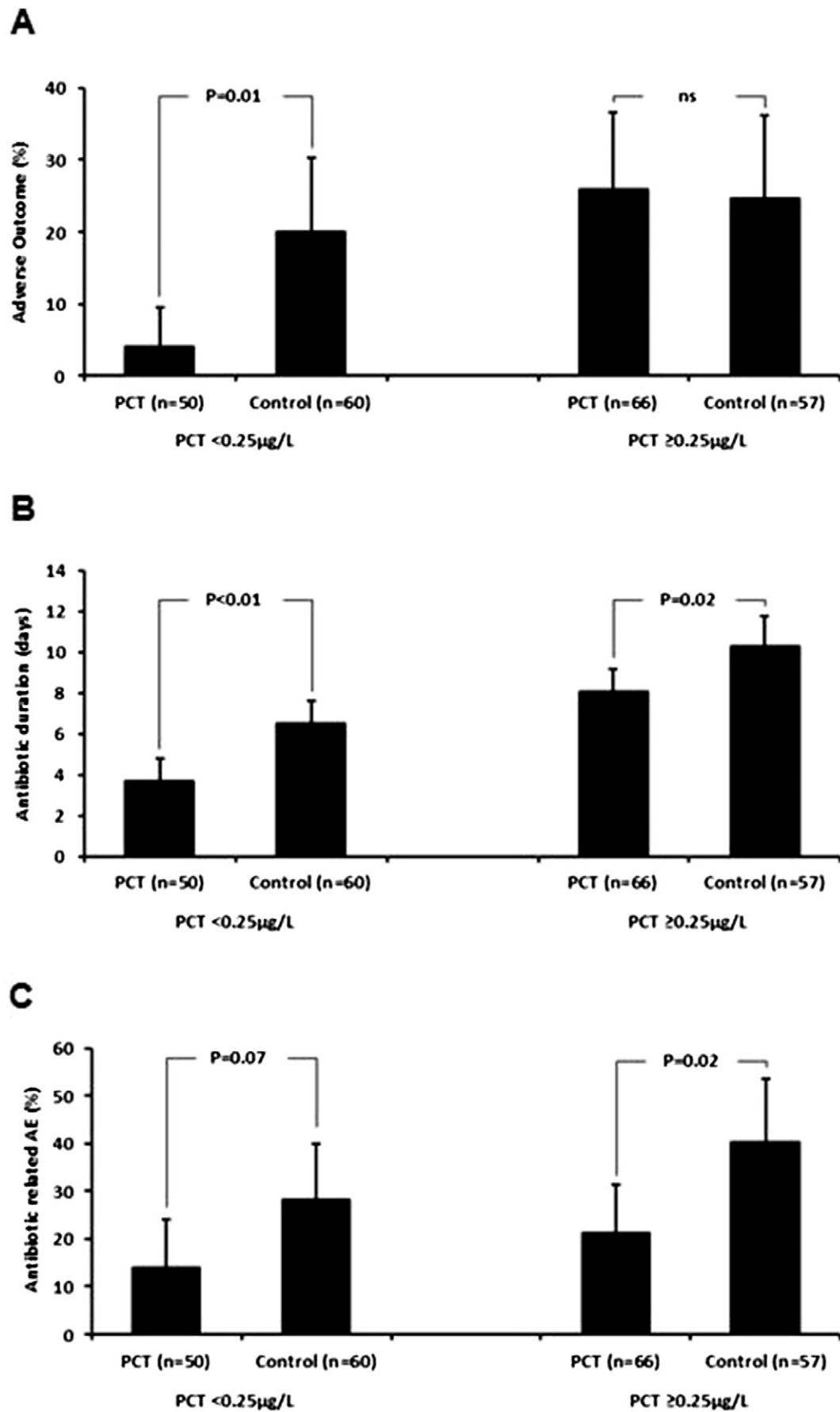


Fig. 1. Endpoints by randomization group in patients with low (<0.25 µg/L) or high (≥0.25 µg/L) initial PCT levels. Panel A, primary endpoints. Panels B and C, selected secondary endpoints. PCT, procalcitonin.

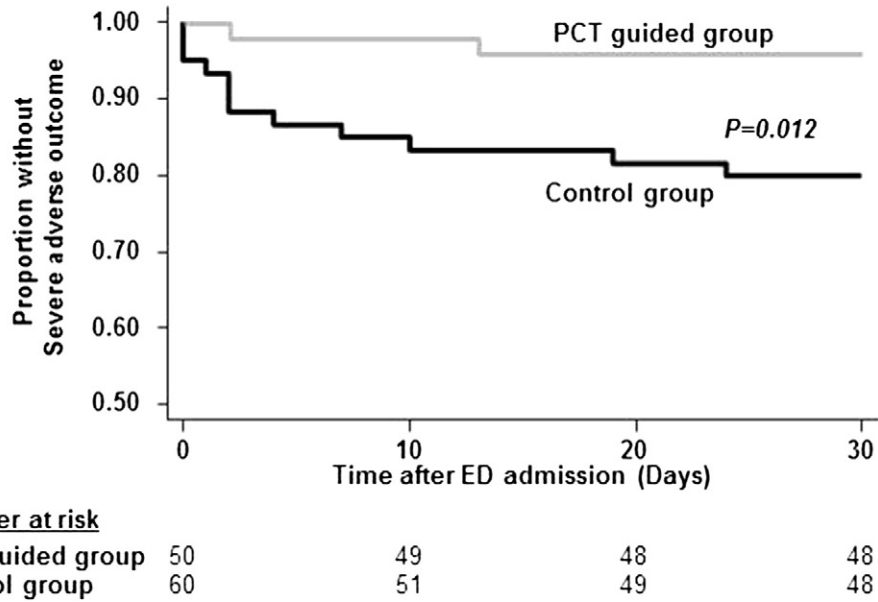


Fig. 2. Time to the first adverse outcome by randomization group in patients with low initial PCT levels (<0.25 µg/L). Adverse outcome included all-cause mortality or ICU admission. Difference between groups, P = 0.012, log rank test. ED, emergency department; ICU, intensive care unit; and PCT, procalcitonin.

respiratory symptoms and PCT values within the healthy population reference range (<0.05 µg/L) had better outcomes if they did not receive antibiotics. Yet, as acknowledged by the BACH investigators, due to their study’s lack of randomization, causal inferences could not be drawn. For example, the observed difference in death rates may have been attributable to sicker patients more often receiving antibiotics. Our data from a subgroup of patients from randomized, controlled, interventional trial therefore strengthen support for the hypothesis that the initial PCT concentration effectively identifies CHF patients whose respiratory symptoms are unlikely to be due to systemic bacterial infection, and in whom antibiotic therapy may therefore be counterproductive. Whether these results are also true in CHF patients with

dyspnea due to acute heart failure needs verification in a prospective trial.

Our results are also in line with previous ED studies including patients with fever, where PCT was found to have several advantages, such as faster diagnosis, more accurate risk stratification, and optimization of the treatment, with consequent benefit to the patient and considerably reduced costs [13,25]. Our results also correspond to the main randomized ProHOSP trial [17] where PCT testing resulted in a safe and marked reduction in antibiotic use of 34.8% (95% CI, –40.3% to –28.7%) in patients with different severities of respiratory infections without negatively impacting on clinical outcomes (non-inferiority) and with significantly reducing antibiotic-associated side effects.

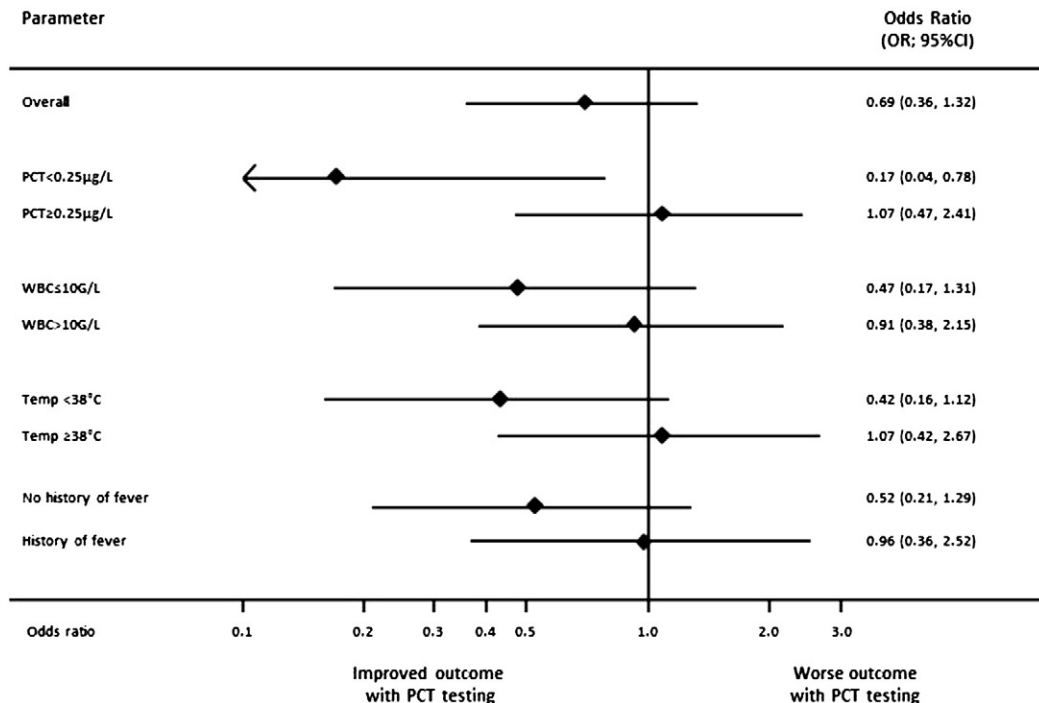


Fig. 3. Sensitivity analysis about the effect of PCT testing within different subgroups. PCT, procalcitonin; WBC, white blood cells count; and Temp, temperature.

Table 4
Patient characteristics by ProHOSP randomization group in patients with elevated PCT values (≥ 0.25 $\mu\text{g/L}$) ($n = 123$). Bold value indicate significance at $p < 0.05$.

Characteristics	PCT group ($n = 66$)	Control group ($n = 57$)	P
Demographic characteristics			
Age, median (IQR), years	82.5 (11.0)	82.0 (11.0)	0.69
Male, % (n)	65.2% (43)	66.7% (38)	0.86
Coexisting illnesses, % (n)^a			
Coronary heart disease	40.9% (27)	38.6% (22)	0.79
Cerebrovascular disease	10.6% (7)	14.0% (8)	0.56
Peripheral artery disease	10.6% (7)	8.8% (5)	0.73
Chronic renal failure	47.0% (31)	38.6% (22)	0.35
Diabetes mellitus	19.7% (13)	22.8% (13)	0.67
Chronic obstructive pulmonary disease	42.4% (28)	54.4% (31)	0.19
Cardiovascular risk factors			
Current or former tobacco user, % (n)	27.3% (18)	14.0% (8)	0.07
Pack years, median (IQR)	40.0 (30.0)	55.0 (37.5)	0.22
Body mass index > 25 kg/m^2 , % (n)	56.1% (37)	73.7% (42)	0.04
Clinical history, % (n)			
Antibiotic pretreatment on presentation	22.7% (15)	29.8% (17)	0.33
Cough	81.1% (54)	77.2% (44)	0.66
Dyspnea	83.3% (55)	84.2% (48)	0.83
New York Heart Association class			
I	7.6% (5)	8.8% (5)	0.81
II	24.2% (16)	12.3% (7)	0.09
III	27.3% (18)	45.6% (26)	0.03
IV	24.2% (16)	17.5% (10)	0.36
Fever or chills	56.1% (37)	57.9% (33)	0.84
Clinical findings			
Confusion, % (n)	10.6% (7)	5.3% (3)	0.36
Respiratory rate, median (IQR), breaths/min	22 (13)	20 (7)	0.65
Systolic blood pressure, median (IQR), mm Hg	131 (30)	128 (35)	0.40
Diastolic blood pressure, median (IQR), mm Hg	73 (25)	70 (19)	0.64
Heart rate, median (IQR), beats/min	94.5 (38)	95 (27)	0.75
Rales during auscultation, % (n)	86.4% (57)	82.5% (47)	0.76
Body temperature, median (IQR), °C	38.1 (1.7)	38.1 (1.5)	0.90
Initial laboratory findings, median (IQR) unless indicated otherwise			
PCT, $\mu\text{g/L}$	0.99 (2.20)	0.81 (2.99)	0.65
Pro-atrial natriuretic peptide, pmol/L	339.0 (288.0)	336.0 (318.0)	0.95
White blood cell count, cells $\times 10^9/\text{L}$	12.8 (8.0)	13.1 (8.3)	1.00
C-reactive protein, mg/L	152.0 (170.0)	154.0 (150.0)	0.94
Treatment site, % (n)			
Inpatient	98.5% (65)	94.7% (54)	0.24

PCT, procalcitonin; and IQR, interquartile range.

^a All comorbidity data were based on patient report and medical chart review. Due to inclusion criteria for the present analysis, all patients had a history of CHF.

Our results in “low initial PCT” patients are also in line with findings in a recent meta-analysis [26]. This meta-analysis incorporated individual data from 4211 patients with respiratory infections from fourteen previous randomized, controlled trials comparing antibiotic administration based on a PCT algorithm versus usual care. Among outcomes examined was “treatment failure”, a composite defined differently according to the setting (primary care, ED, ICU), but always including short-term death,

and frequently, respiratory tract infection worsening, complications or recurrence. Interestingly, PCT guidance was associated with a significantly lower risk for treatment failure (OR 0.82, 95% CI 0.71–0.97, $P = 0.02$). In group analysis, this effect was robust for patients presenting to the ED (OR 0.76, 95% CI 0.61–0.95, $P = 0.014$). It remains somewhat unclear why PCT monitoring resulted in improvement in this outcome. Possible explanations include (a) PCT may provide additional useful information which can influence decision-making in areas such as safe and early discharge; (b) in controls, treatment failures may relate to prolonged and unjustified antibiotic exposure; and (c) in line with the current report, PCT may improve individualized treatment decisions regarding initial medication in polymorbid patients with different possible etiologies for their respiratory symptoms.

Patients with initial high PCT were found to have lower antibiotic exposure – mainly due to **earlier stop of antibiotic therapy** (when PCT levels **dropped below 0.25 $\mu\text{g/L}$ or by at least 80% of the maximum level**) without affecting the outcome of patients. However, this analysis was underpowered to find differences in patient outcomes associated with antibiotic exposure such as side effects or emergence of multi resistant bacteria. Nevertheless, previous trials focusing on these issues found benefits of early stop of therapy in patients with high PCT [27–29].

4.2. Limitations

Nonetheless, several **limitations** should be considered when interpreting our results. Firstly, this was a **secondary** analysis of a trial designed and **powered to answer a different question**, i.e., whether in a broader patient population, PCT-aided antibiotic stewardship could reduce antibiotic exposure and side effects without compromising patient outcomes. Clinical information about CHF and its treatment therefore was not systematically collected during ProHOSP and may not always have been complete, a situation that only partly could be mitigated by retrospective chart review. It is thus possible that CHF in patients was under-diagnosed or over-diagnosed. Secondly, this analysis involved a relatively small part of the ProHOSP cohort ($n = 233/1359$), and our finding of improved outcomes with PCT guidance was seen in an even smaller group, patients with low initial PCT ($n = 110$). Thirdly, unlike in the BACH trial where patients with dyspnea were included, the ProHOSP population had a strong suspicion of LRTI and it remains unclear whether results are generalizable to patients with a lower pretest probability of such infection or of AHF. Forth, it is not possible to see whether in an individual patient with suspicion of respiratory infection antibiotics were necessary or not given the absence of a true infection gold standard (i.e., only 12% of our sample had positive proof of infection). The finding of this analysis that PCT testing resulted in lower antibiotic exposure and thereby improved patient outcomes provides, however, indirect proof that PCT improves infection diagnosis and management. Fifth, no measurement of natriuretic peptides was routinely performed in this study

Table 5
Primary and secondary endpoints by initial PCT value and ProHOSP treatment group assignment: Patients with elevated initial PCT (≥ 0.25 $\mu\text{g/L}$) ($n = 123$). Bold value indicate significance at $p < 0.05$.

	PCT group ($n = 66$)	Control group ($n = 57$)	Absolute difference, PCT group vs. control group (95% CI)	P
Primary endpoint				
30-Day adverse outcome (all-cause mortality, ICU admission or both), % (n)	25.8% (17)	24.6% (14)	1.2% (–14.5% to 16.9%)	0.88
Secondary endpoints				
30-Day all-cause mortality, % (n)	10.6% (7)	10.5% (6)	0.1% (–11.0% to 11.2%)	0.99
30-Day antibiotic exposure (days), mean \pm SD	8.1 \pm 4.6	10.3 \pm 5.6	–2.2 (–4.0 to –0.3)	0.02
30-Day reported antibiotic-related side effects^a				
Incidence of reported side effects, % (n)	21.2% (14)	40.4% (23)	–19.1% (–35.3% to –2.9%)	0.02
Duration of side effects (days), mean \pm SD	2.8 \pm 2.4	4.0 \pm 3.7	–1.2 (–3.7 to 1.4)	0.35
Hospital length-of-stay (survivors only) (days), mean \pm SD	($n = 59$) 13.9 \pm 7.6	($n = 51$) 14.2 \pm 9.2	–0.3 (–3.5 to 2.9)	0.84

CI, confidence interval; ICU, intensive care unit; and SD, standard deviation. Numbers may not add exactly due to rounding.

^a As assessed by the attending physicians.

which would help in the better characterization of our cohort. Finally, we did not blind physicians with regard to allocation to control or intervention group, and also outcome assessment was only partly blinded, which may have introduced some bias.

4.3. Future directions

Given these limitations, and the **different PCT cut-offs used in BACH [4] and in our analysis**, a large, randomized interventional trial is urgently needed to definitively validate in the CHF patient population with acute respiratory symptoms and possible bacterial LRTI the potential benefits of PCT testing, including allowing earlier adequate treatment of the underlying condition. **Maisel and colleagues have announced plans for such a trial (presentation by Alan Maisel, MD, International Symposium on Intensive Care and Emergency Medicine, Brussels, Belgium, March 21, 2013).**

Additionally, it appears that outcome advantages associated with PCT monitoring will be assessed in a broader spectrum of cardiovascular patients. Based on a four-trial meta-analysis showing such advantages from preventing post-stroke infections through antibiotic therapy [30], Ulm et al. plan to investigate in the STRAWINSKI study whether PCT-based early identification and treatment of mainly respiratory bacterial infections improve functional outcome after severe ischemic stroke [31]. If this latter hypothesis also proves to be correct, PCT may be a promising diagnostic biomarker in the field of cardiovascular diseases.

5. Conclusions

Patients with a medical history of CHF presenting to the emergency department with respiratory symptoms and suspicion for respiratory infection had decreased antibiotic exposure and improved outcomes when PCT measurement was used to exclude bacterial infection and guide antibiotic treatment. These data provide further evidence for the potential harmful effects of antibiotics when used indiscriminately in clinically symptomatic CHF patients without underlying infection. Whether timelier, more appropriate treatment of AHF explains that our results need verification in a well-powered randomized trial.

Conflict of interest

PS, MCC and BM received support from B-R-A-H-M-S/Thermo Fisher and bioMérieux to attend meetings, fulfill speaking engagements and for unrestricted research grants. PS is supported by the Swiss National Science Foundation (SNSF Professorship, PP00P3_150531/1).

Acknowledgment

We are grateful to all local physicians, nursing staff and patients participating in ProHOSP. We especially thank the staff of the emergency room, medical clinics and central laboratories of the University Hospital Basel, the “Kantonsspital” Liestal, Aarau, Luzern and Münsterlingen, and the “Bürgerspital” Solothurn for their very helpful assistance, patience and technical support. We thank the following for their participation in the ProHOSP Data Safety and Monitoring Board: A.P. Perruchoud, MD, S. Harbarth, MD, and A. Azzola, MD, and the ProHOSP Study Group members other than those among the authors of the present manuscript: Marcel Wolbers, PhD, Isabelle Widmer, MD, Stefanie Neidert, MD, Thomas Fricker, MD, Claudine Blum, MD, Ursula Schild, RN, Katharina Regez, RN, Rita Bossart, RN, Ronald Schoenenberger, MD, Heiner C. Bucher, MD, Aysha Chaudri, Jeannine Haeuptle, Roya Zarbosky, Rico Fiumefreddo, Melanie Wieland, RN, Charly Nusbaumer, MD, Andres Christ, MD, Roland Bingisser, MD, Kristian Schneider, RN, Christine Vincenzi, RN, Michael Kleinknecht, RN, Brigitte Walz, RN, Verena Briner, MD, Dieter Conen, MD, Andreas Huber, MD, Jody

Stahelin, MD, Chantal Bruehlhardt, RN, Ruth Luginbuehl, RN, Agnes Muehleemann, PhD, Ineke Lambinon, and Max Zueger, MD.

References

- [1] Nawar EW, Niska RW, Xu J. National Hospital Ambulatory Medical Care Survey. Emergency department summary. *Adv Data* 2005;2007:1–32.
- [2] Tsuyuki RT, McKelvie RS, Arnold JM, et al. Acute precipitants of congestive heart failure exacerbations. *Arch Intern Med* 2001;161:2337–42.
- [3] Wuerz RC, Meador SA. Effects of prehospital medications on mortality and length of stay in congestive heart failure. *Ann Emerg Med* 1992;21:669–74.
- [4] Maisel A, Neath SX, Landsberg J, et al. Use of procalcitonin for the diagnosis of pneumonia in patients presenting with a chief complaint of dyspnoea: results from the BACH (Biomarkers in Acute Heart Failure) trial. *Eur J Heart Fail* 2012;14:278–86.
- [5] Fonarow GC, Abraham WT, Albert NM, et al. Factors identified as precipitating hospital admissions for heart failure and clinical outcomes: findings from OPTIMIZE-HF. *Arch Intern Med* 2008;168:847–54.
- [6] Schuetz P, Haubitze S, Mueller B. Do sepsis biomarkers in the emergency room allow transition from bundled sepsis care to personalized patient care? *Curr Opin Crit Care* 2012;18:341–9.
- [7] Mitsuma SF, Mansour MK, Dekker JP, et al. Promising new assays and technologies for the diagnosis and management of infectious diseases. *Clin Infect Dis* 2013;56:996–1002.
- [8] Muller F, Christ-Crain M, Breggenzer T, et al. Procalcitonin levels predict bacteremia in patients with community-acquired pneumonia: a prospective cohort trial. *Chest* 2010;138:121–9.
- [9] Linscheid P, Seboek D, Schaer DJ, Zulewski H, Keller U, Muller B. Expression and secretion of procalcitonin and calcitonin gene-related peptide by adherent monocytes and by macrophage-activated adipocytes. *Crit Care Med* 2004;32:1715–21.
- [10] Linscheid P, Seboek D, Zulewski H, Keller U, Muller B. Autocrine/paracrine role of inflammation-mediated calcitonin gene-related peptide and adrenomedullin expression in human adipose tissue. *Endocrinology* 2005;146:2699–708.
- [11] Muller B, White JC, Nysten ES, Snider RH, Becker KL, Habener JF. Ubiquitous expression of the calcitonin-*i* gene in multiple tissues in response to sepsis. *J Clin Endocrinol Metab* 2001;86:396–404.
- [12] Becker KL, Nysten ES, White JC, Muller B, Snider Jr RH. Clinical review 167: procalcitonin and the calcitonin gene family of peptides in inflammation, infection, and sepsis: a journey from calcitonin back to its precursors. *J Clin Endocrinol Metab* 2004;89:1512–25.
- [13] Travaglino F, De Berardinis B, Magrini L, et al. Utility of procalcitonin (PCT) and mid regional pro-adrenomedullin (MR-proADM) in risk stratification of critically ill febrile patients in emergency department (ED). A comparison with APACHE II score. *BMC Infect Dis* 2012;12:184.
- [14] Schuetz P, Briel M, Mueller B. Clinical outcomes associated with procalcitonin algorithms to guide antibiotic therapy in respiratory tract infections. *JAMA* 2013;309:717–8.
- [15] Haubitze S, Mueller B, Schuetz P. Streamlining antibiotic therapy with procalcitonin protocols: consensus and controversies. *Expert Rev Respir Med* 2013;7:145–57.
- [16] Morgenthaler NG, Struck J, Fischer-Schulz C, Bergmann A. Sensitive immunoluminometric assay for the detection of procalcitonin. *Clin Chem* 2002;48:788–90.
- [17] Schuetz P, Christ-Crain M, Thomann R, et al. Effect of procalcitonin-based guidelines vs standard guidelines on antibiotic use in lower respiratory tract infections: the ProHOSP randomized controlled trial. *JAMA* 2009;302:1059–66.
- [18] Schuetz P, Christ-Crain M, Wolbers M, et al. Procalcitonin guided antibiotic therapy and hospitalization in patients with lower respiratory tract infections: a prospective, multicenter, randomized controlled trial. *BMC Health Serv Res* 2007;7:102.
- [19] Woodhead M, Blasi F, Ewig S, et al. Guidelines for the management of adult lower respiratory tract infections. *Eur Respir J* 2005;26:1138–80.
- [20] Niederman MS, Mandell LA, Anzueto A, et al. Guidelines for the management of adults with community-acquired pneumonia. Diagnosis, assessment of severity, antimicrobial therapy, and prevention. *Am J Respir Crit Care Med* 2001;163:1730–54.
- [21] Gonzales R, Sande MA. Uncomplicated acute bronchitis. *Ann Intern Med* 2000;133:981–91.
- [22] Calverley PM, Walker P. Chronic obstructive pulmonary disease. *Lancet* 2003;362:1053–61.
- [23] Schuetz P, Chiappa V, Briel M, Greenwald JL. Procalcitonin algorithms for antibiotic therapy decisions: a systematic review of randomized controlled trials and recommendations for clinical algorithms. *Arch Intern Med* 2011;171:1322–31.
- [24] Albrich WC, Dusemund F, Bucher B, et al. Effectiveness and safety of procalcitonin-guided antibiotic therapy in lower respiratory tract infections in “real life”: an international, multicenter poststudy survey (ProREAL). *Arch Intern Med* 2012;172:715–22.
- [25] Schuetz P, Amin DN, Greenwald JL. Role of procalcitonin in managing adult patients with respiratory tract infections. *Chest* 2012;141:1063–73.
- [26] Schuetz P, Muller B, Christ-Crain M, et al. Procalcitonin to initiate or discontinue antibiotics in acute respiratory tract infections. *Cochrane Database Syst Rev* 2012;9:CD007498.
- [27] Briel M, Schuetz P, Mueller B, et al. Procalcitonin-guided antibiotic use vs a standard approach for acute respiratory tract infections in primary care. *Arch Intern Med* 2008;168:2000–7 [discussion 7–8].
- [28] Bouadma L, Luyt CE, Tubach F, et al. Use of procalcitonin to reduce patients' exposure to antibiotics in intensive care units (PRORATA trial): a multicentre randomised controlled trial. *Lancet* 2010;375:463–74.

- [29] Christ-Crain M, Stolz D, Bingisser R, et al. Procalcitonin guidance of antibiotic therapy in community-acquired pneumonia: a randomized trial. *Am J Respir Crit Care Med* 2006;174:84–93.
- [30] van de Beek D, Wijdicks EF, Vermeij FH, et al. Preventive antibiotics for infections in acute stroke: a systematic review and meta-analysis. *Arch Neurol* 2009;66:1076–81.
- [31] Ulm L, Ohlraun S, Harms H, et al. STroke Adverse outcome is associated With Nosocomial Infections (STRAWINSKI): procalcitonin ultrasensitive-guided antibacterial therapy in severe ischaemic stroke patients – rationale and protocol for a randomized controlled trial. *Int J Stroke* 2012;8(7):598–603.